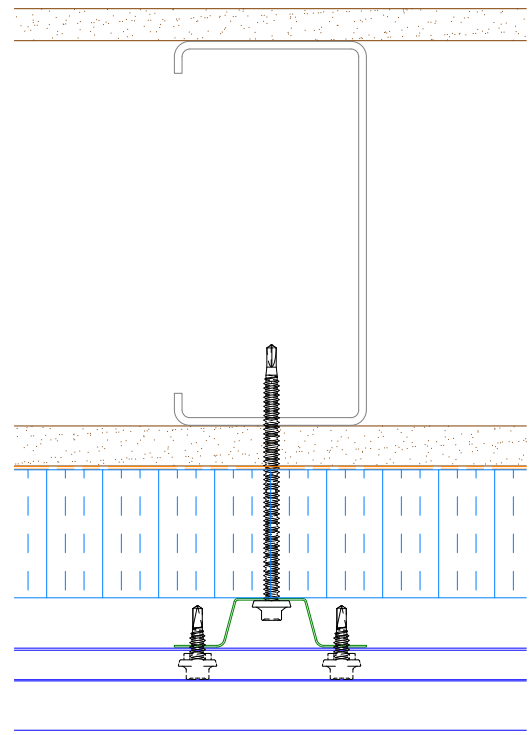
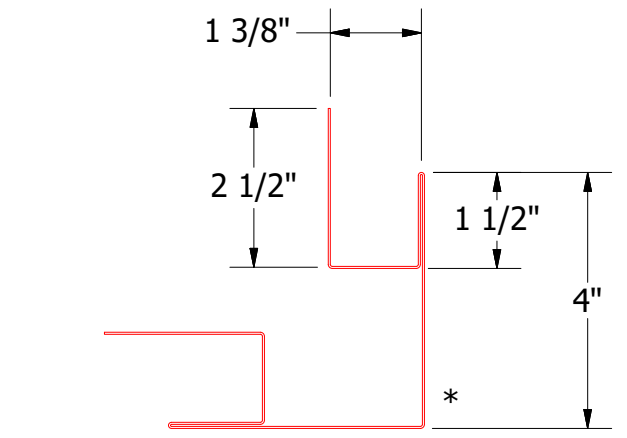
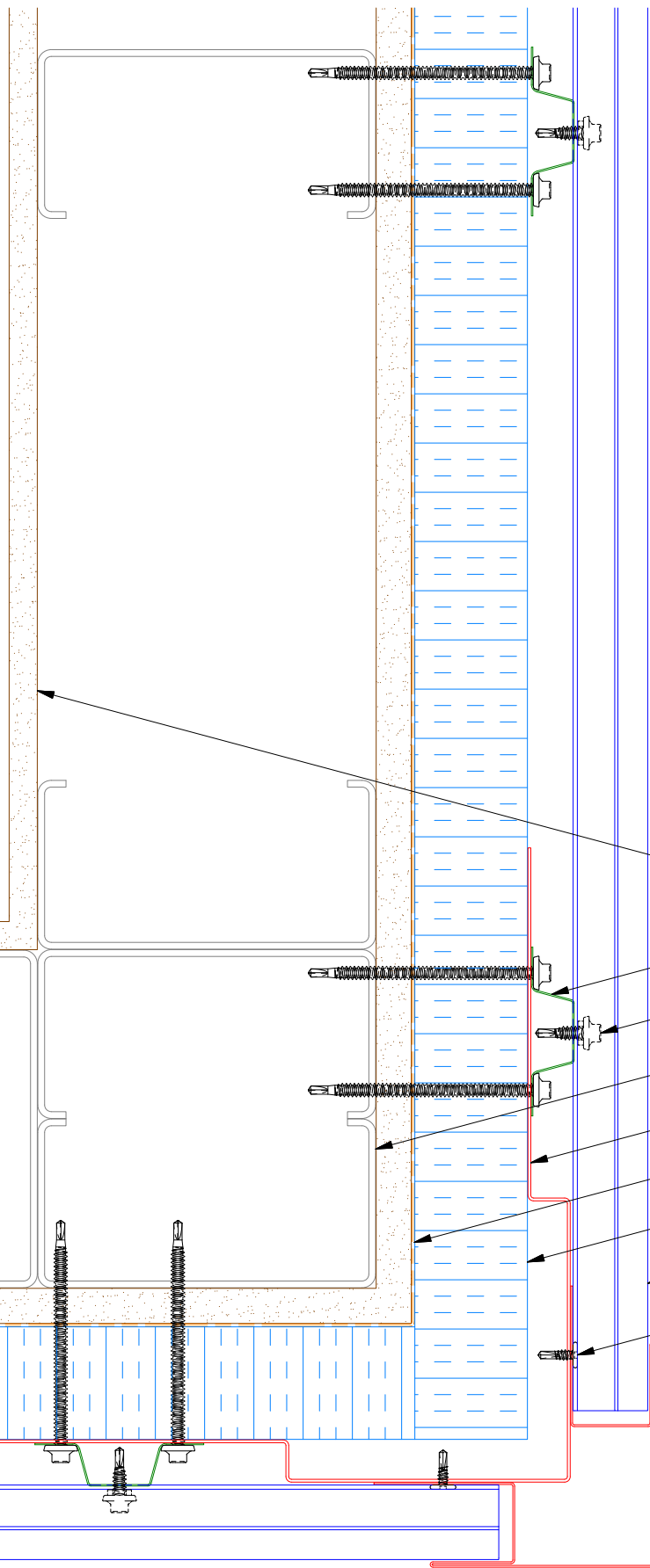
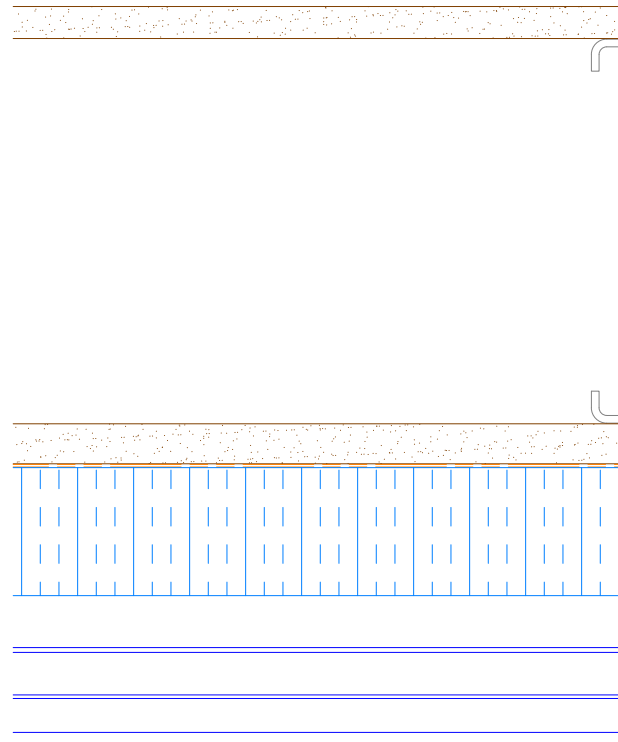


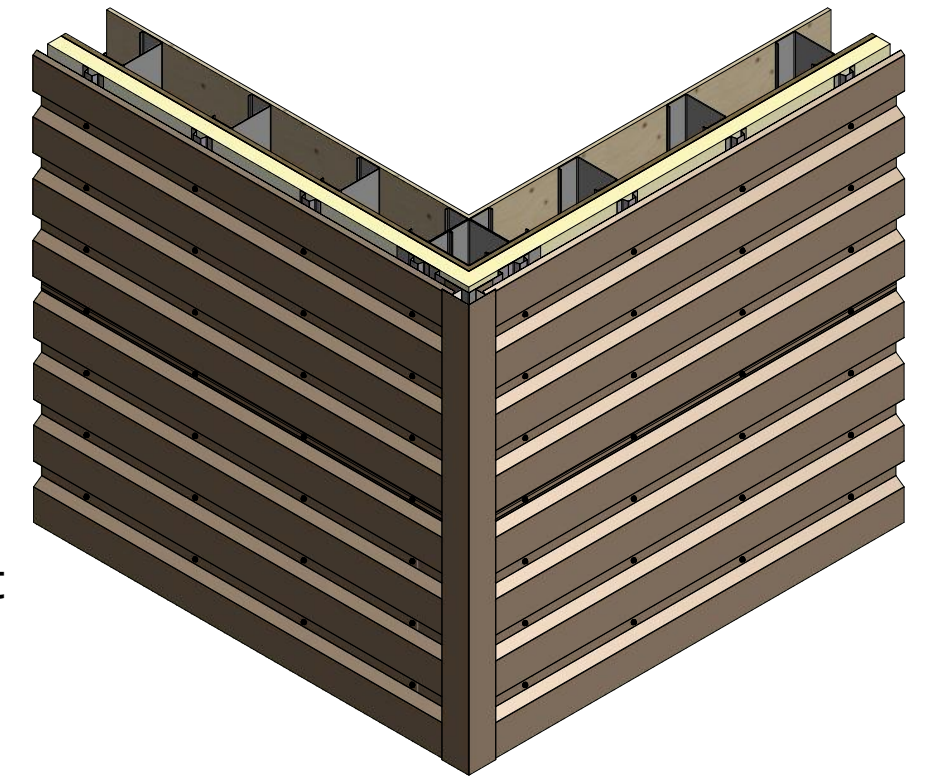
Horizontal Panel



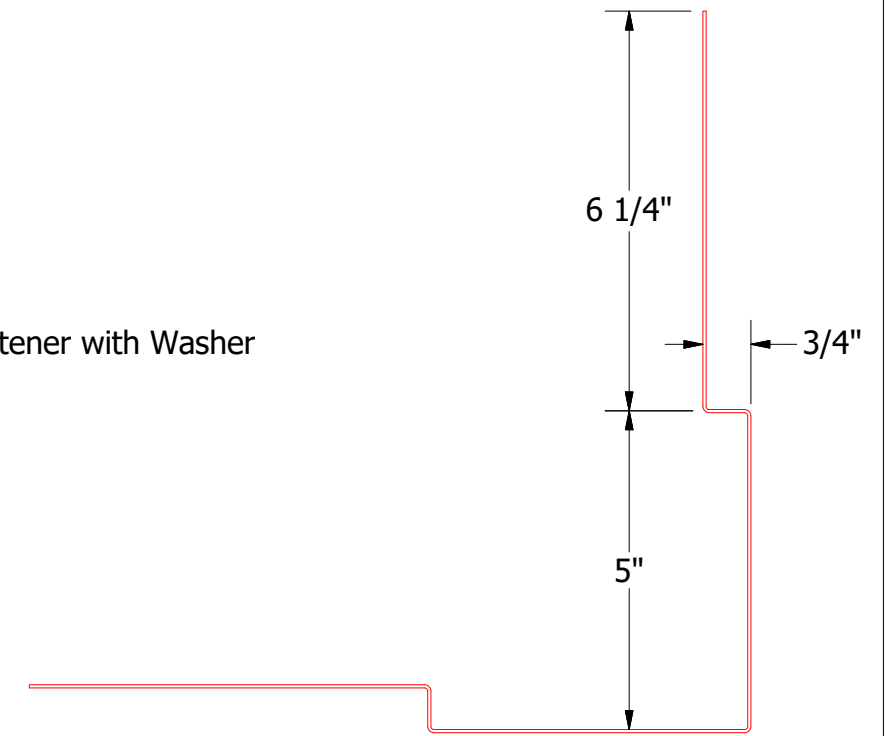
Alternate Subgirt Orientation



BPA602-Outside Corner Post



- Interior Finish
- Vertical Subgirt
- #14 x 7/8" Painted Hex Washer Head Fastener with Washer
- Metal Wall Stud
- Support Plate
- Water and Air Resistive Barrier
- Water Resistant Insulation
- PenumWall Panel
- #10 x 5/8" Wafer Head Fastener
- Outside Corner Post



Support Plate

NOTE: Optional 18 GA. Plate for Outside Corner Post is Available
Note: * denotes color side.

ATAS ATAS INTERNATIONAL, INC
 Allentown PA
 610-395-8445
 Mesa AZ
 480-558-7210

REV. NO.		DATE	DESCRIPTION OF REVISION	BY	APP	TITLE		
1	4/20/2021		Added color side note.	DMR		PenumWall Open Outside Corner Detail		
						DWG. NO.	DR	DATE
						APP	DMR	4/21/2017
						MATERIAL		DATE
						SH. SIZE	B	SCALE
								X:X