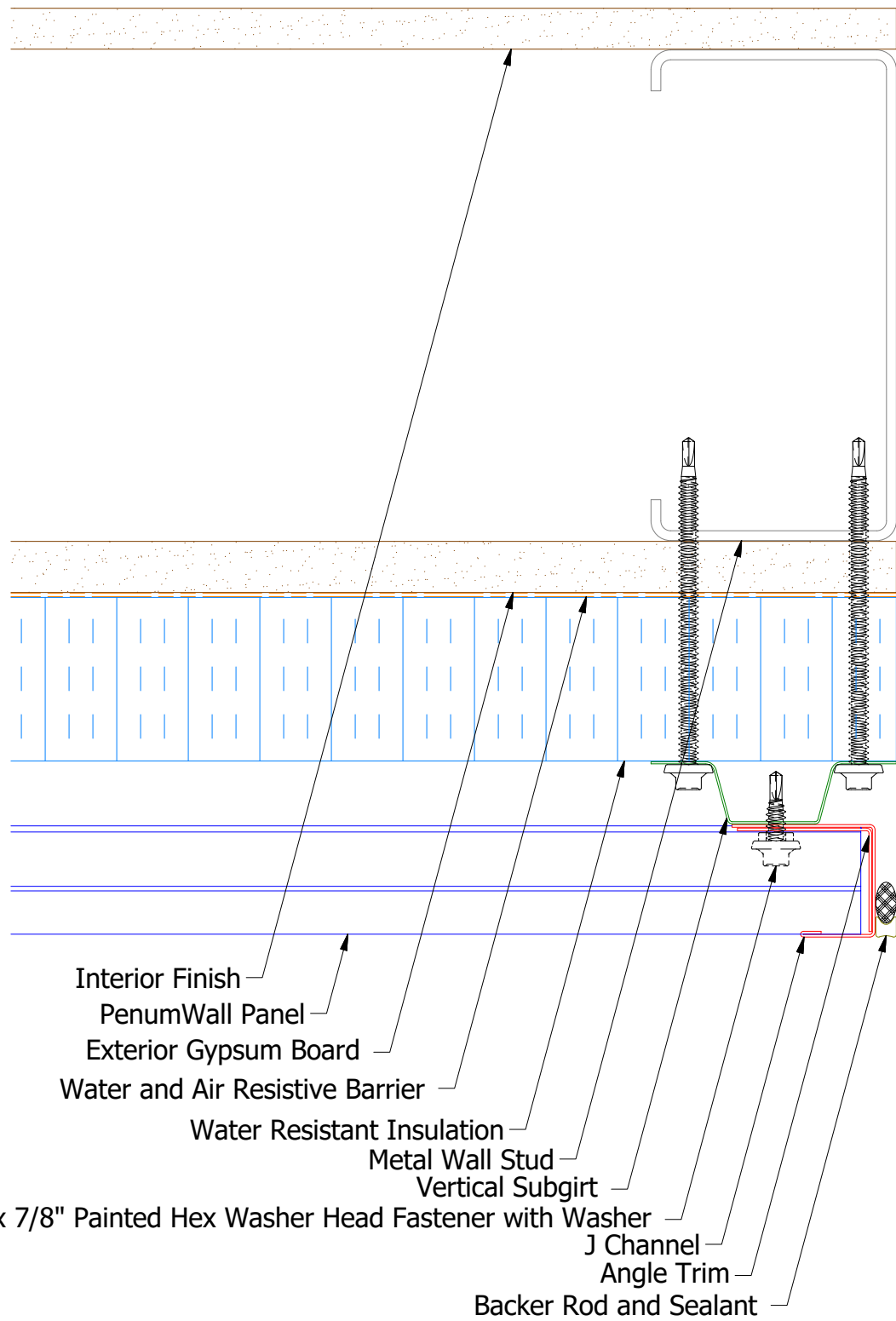
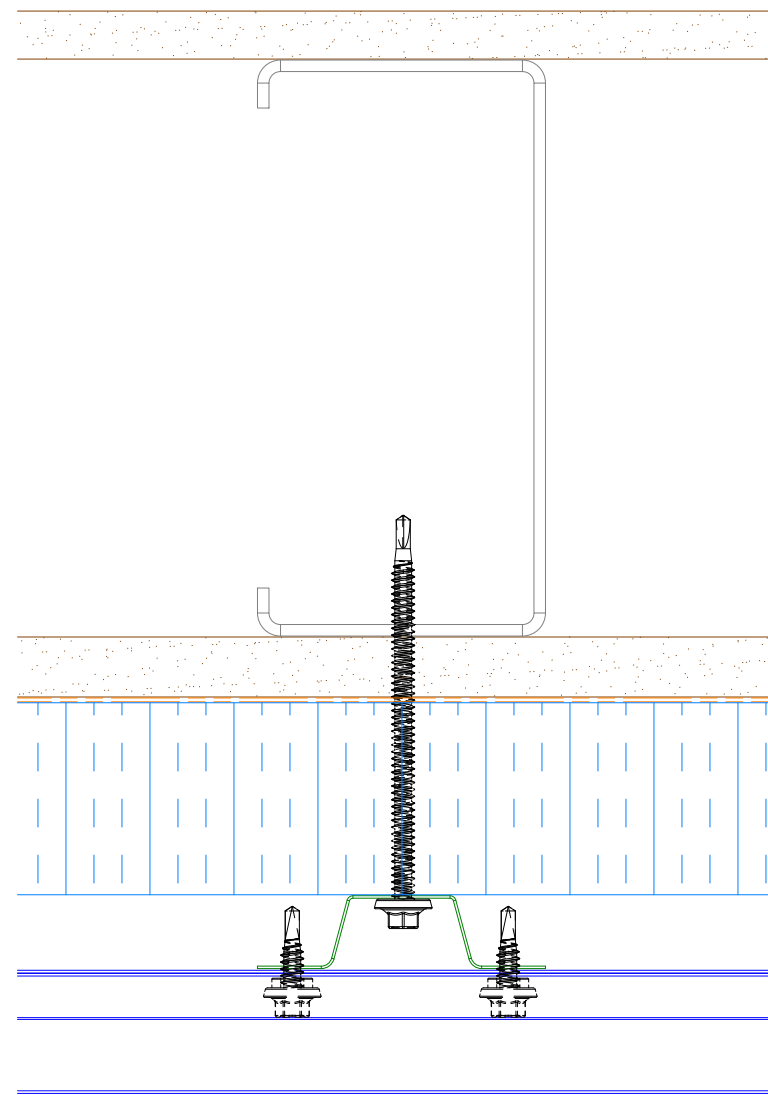


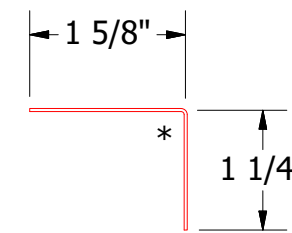
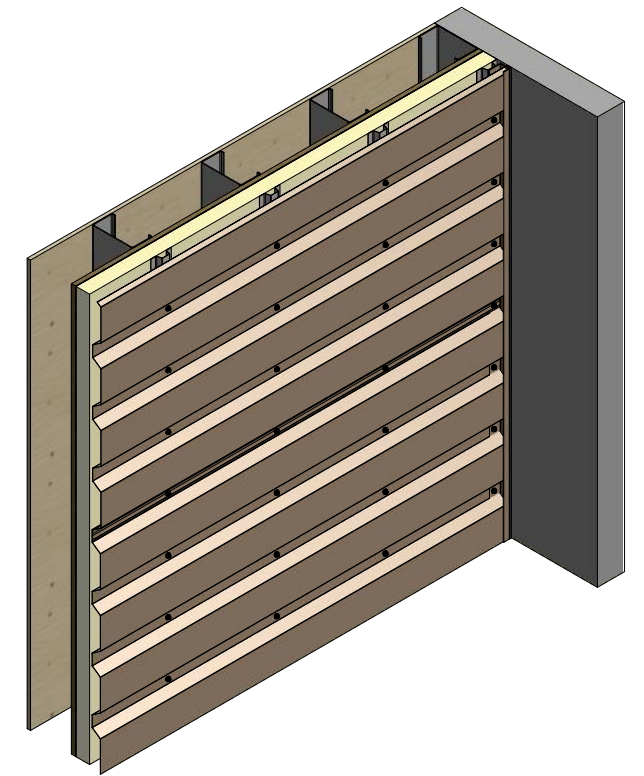
Horizontal Panel



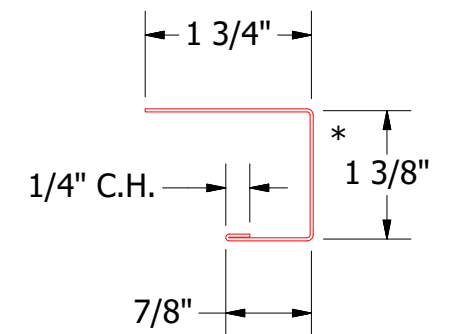
- Interior Finish
- PenumWall Panel
- Exterior Gypsum Board
- Water and Air Resistive Barrier
- Water Resistant Insulation
- Metal Wall Stud
- Vertical Subgirt
- #14 x 7/8" Painted Hex Washer Head Fastener with Washer
- J Channel
- Angle Trim
- Backer Rod and Sealant



Alternate Subgirt Orientation



BPA280-Angle Trim



BPA138-J Channel

Note: * denotes color side.

TITLE				PenumWall Open Endwall Detail			
DWG. NO.		DR		DATE		DATE	
1		DMR		4/18/2017		DATE	
REV. NO.		DATE		DESCRIPTION OF REVISION		BY	
1		4/16/2021		Added color side note.		DMR	
MATERIAL		SH. SIZE		SCALE		X:X	
		B					


ATAS INTERNATIONAL, INC
 Allentown PA
 610-395-8445
 Mesa AZ
 480-558-7210