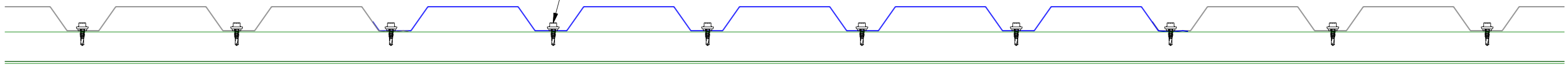


#14 x 7/8" Painted Hex Washer Head Fastener with Washer

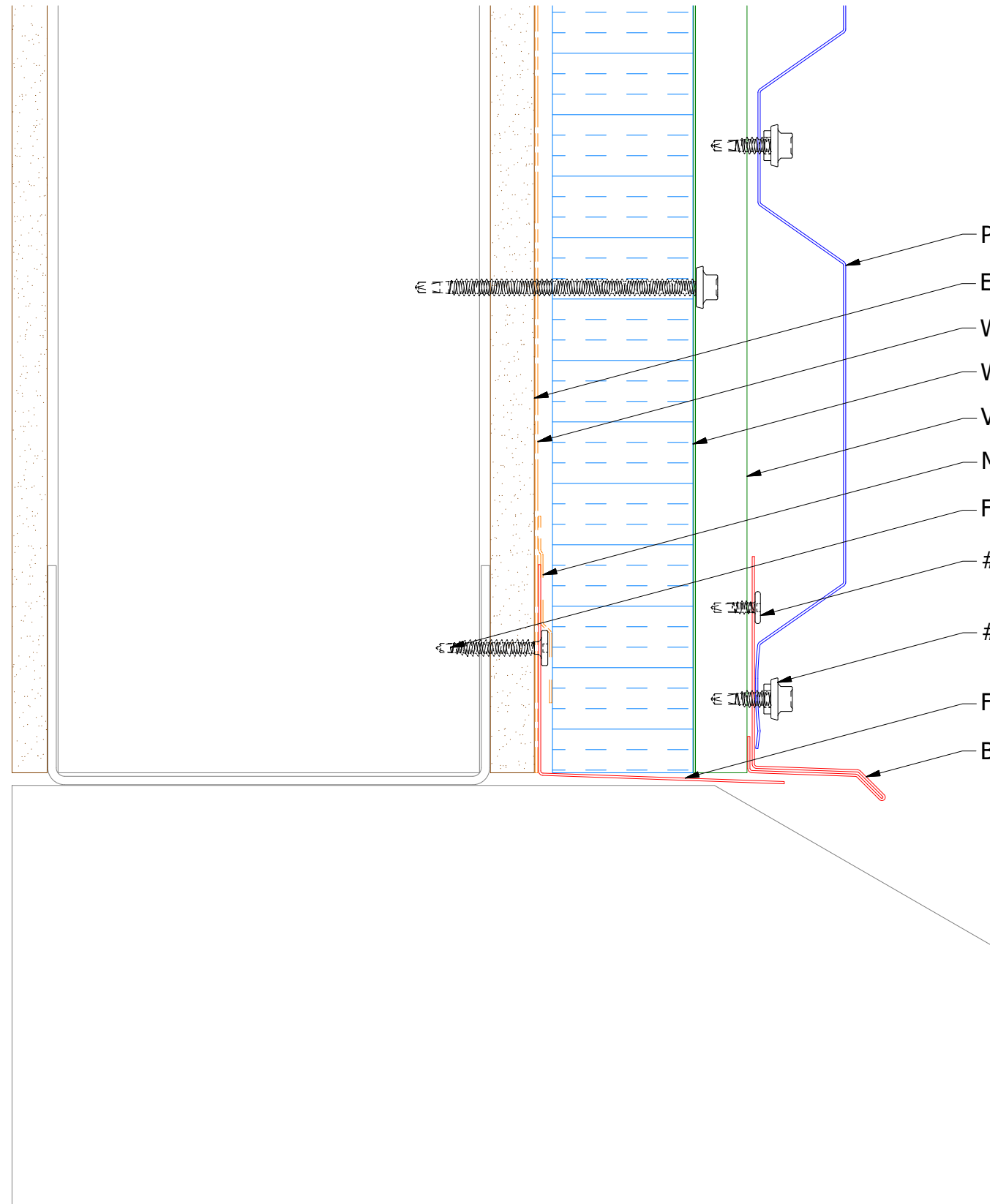


ATAS INTERNATIONAL, INC  
 Allentown PA  
 610-395-8445  
 Mesa AZ  
 480-558-7210

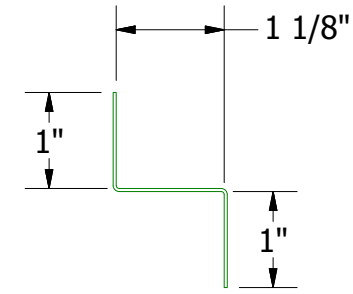
TITLE  
**PenumWall Open Panel Profile Detail**

REV. NO.	DATE	DESCRIPTION OF REVISION	BY	APP	DWG. NO.	DR	DATE
						DMR	4/24/2017
					MATERIAL	APP	DATE
					SH. SIZE	B	SCALE
							X:X

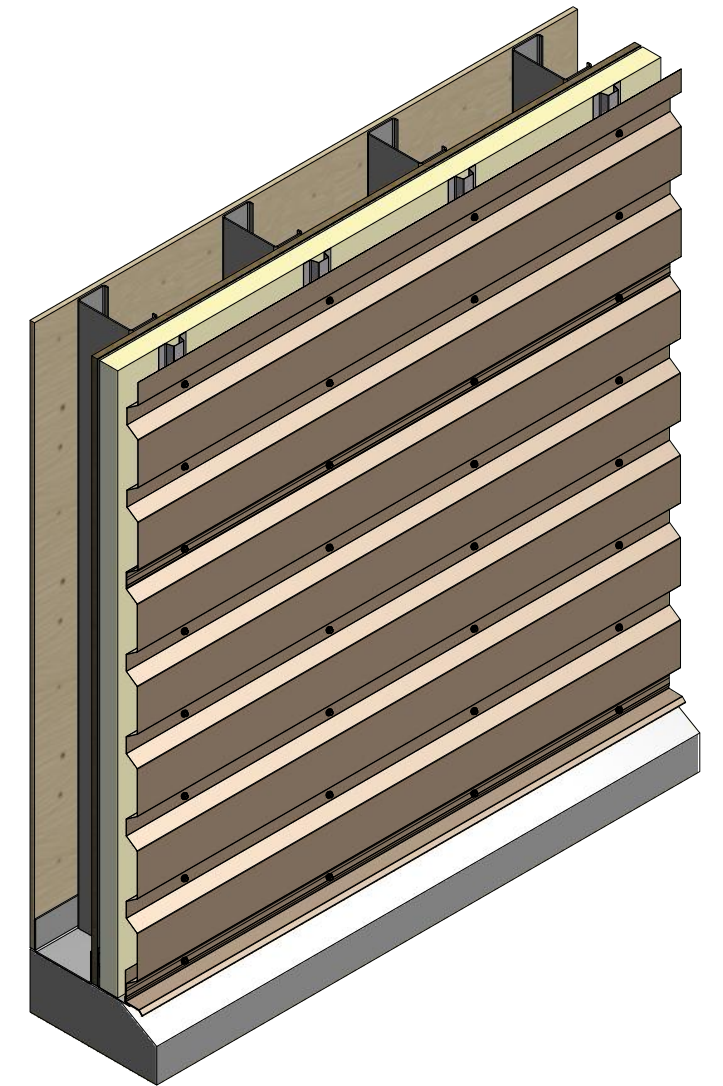
# Horizontal Panel



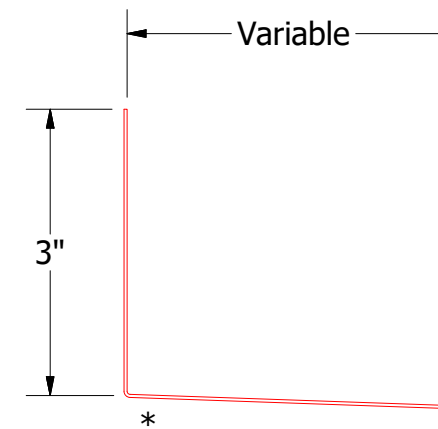
Note: \* denotes color side.



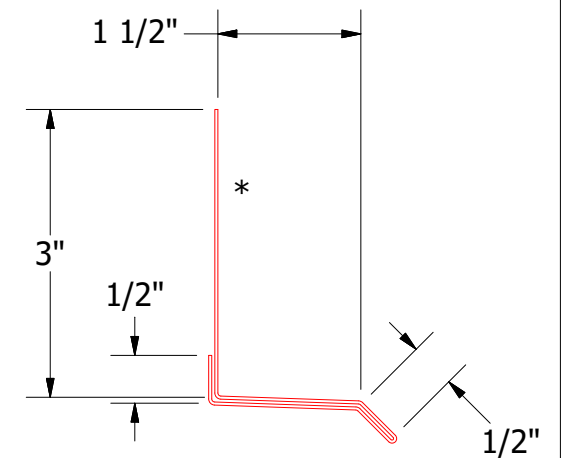
**BPA681 - Support Z**  
(if conditions apply)



- PenumWall Panel
- Exterior Gypsum Board
- Water and Air Resistive Barrier
- Water Resistant Insulation
- Vertical Subgirt
- Membrane Strip (by others)
- Flashing Fastener (by others)
- #10 x 5/8" Washer Head Fastener
- #14 x 7/8" Painted Hex Washer Head Fastener with Washer
- Flashing (by others)
- Base Trim



**Flashing**  
(Field Fabricated From Color Matched Flat Stock)

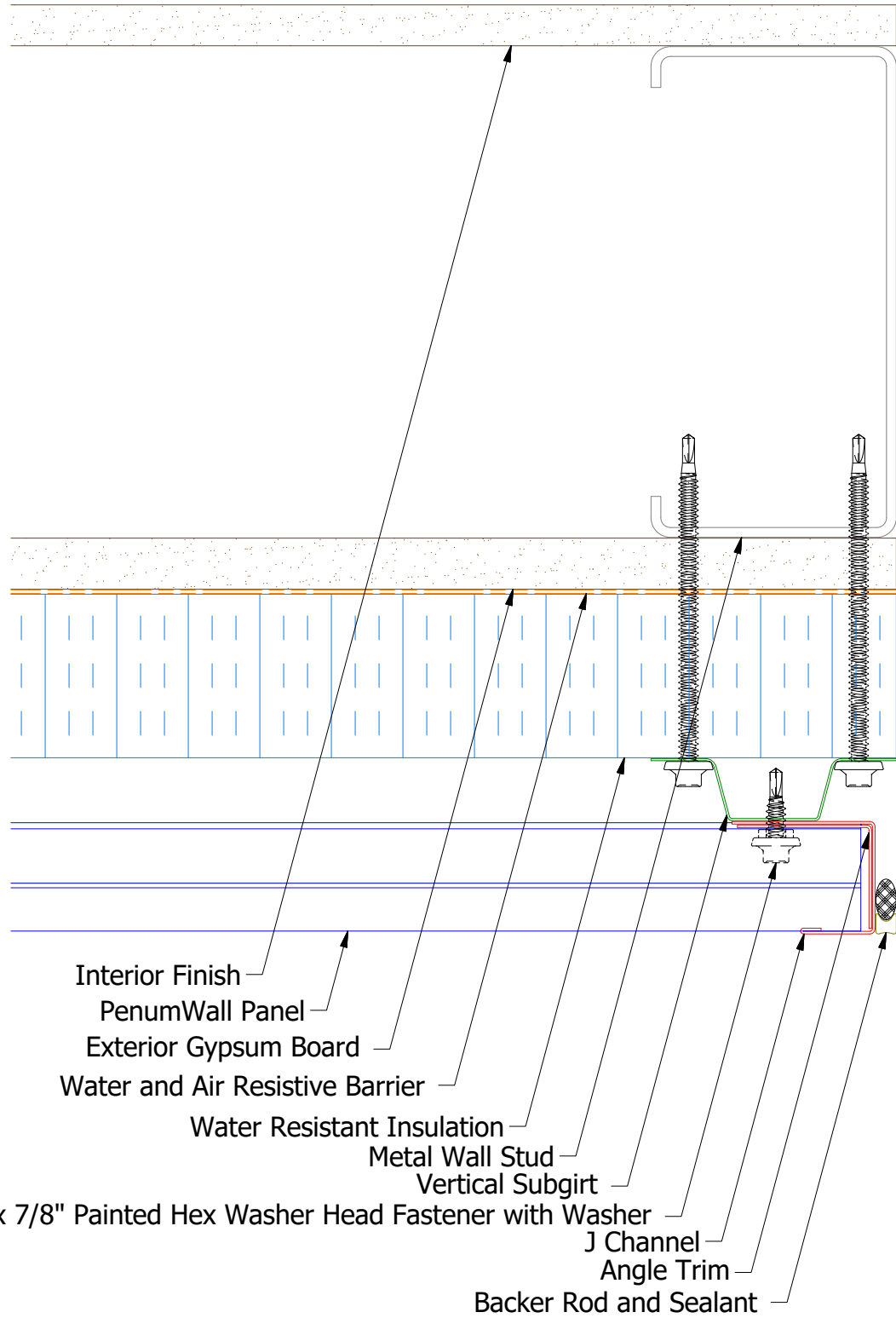


**BPA661-Base Trim**

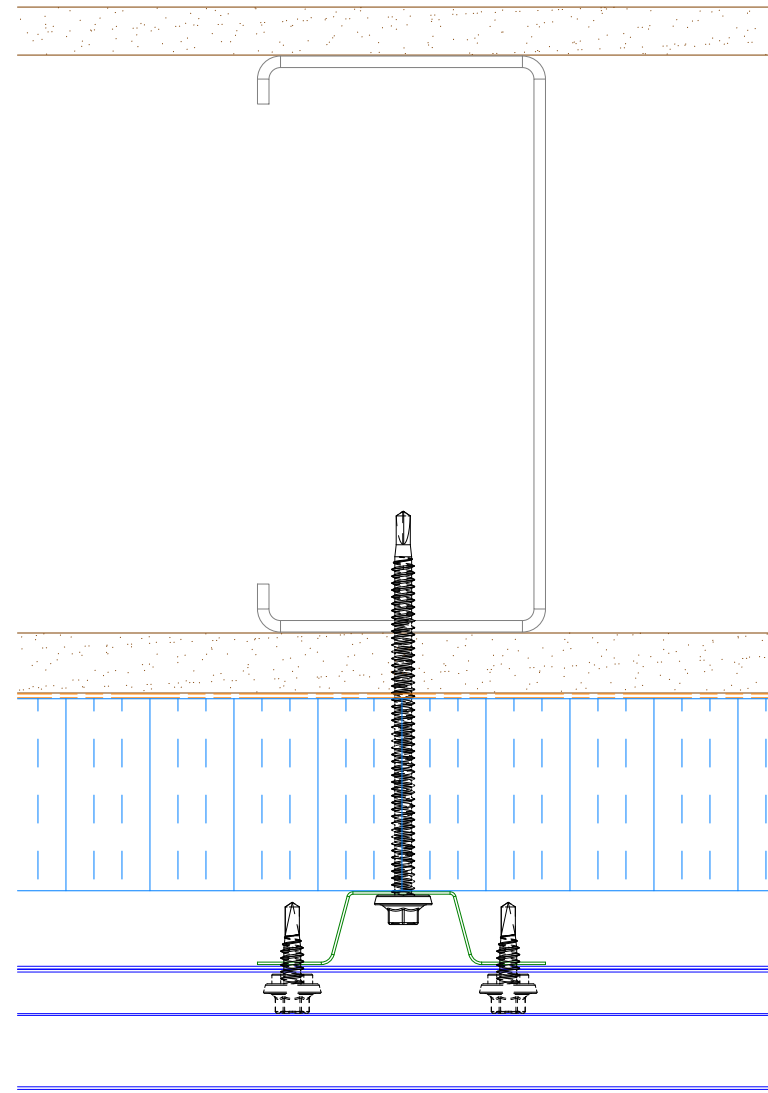
**ATAS** ATAS INTERNATIONAL, INC  
Allentown PA  
610-395-8445  
Mesa AZ  
480-558-7210

TITLE				PenumWall Open Base Detail	
DWG. NO.		DR	DMR	DATE	4/18/2017
REV. NO.	01	DATE	4/12/2021	DESCRIPTION OF REVISION	Added Support Z Trim and color side note.
BY	KRK	APP		SH. SIZE	B
APP		SCALE	X:X		

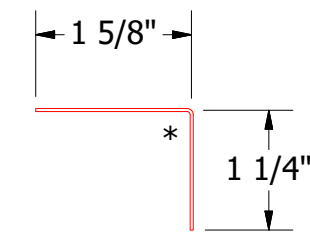
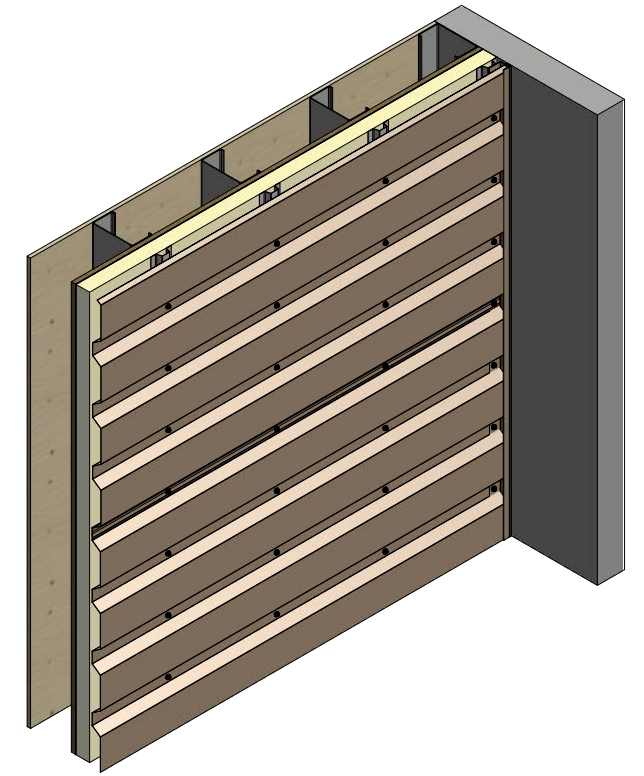
# Horizontal Panel



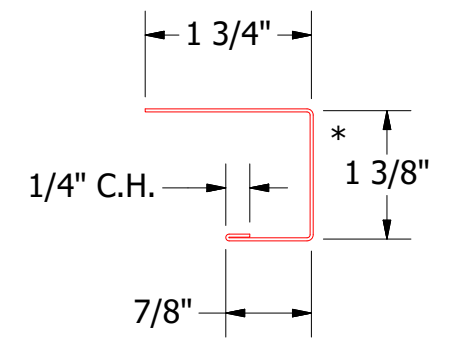
- Interior Finish
- PenumWall Panel
- Exterior Gypsum Board
- Water and Air Resistive Barrier
- Water Resistant Insulation
- Metal Wall Stud
- Vertical Subgirt
- #14 x 7/8" Painted Hex Washer Head Fastener with Washer
- J Channel
- Angle Trim
- Backer Rod and Sealant



## Alternate Subgirt Orientation



BPA280-Angle Trim



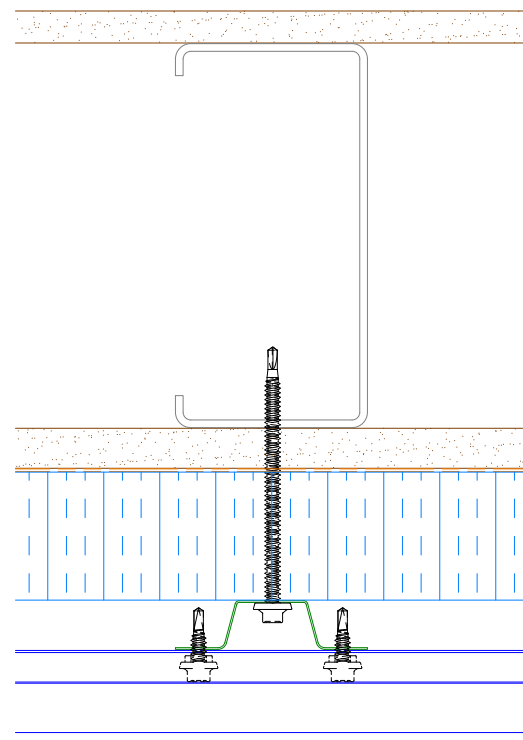
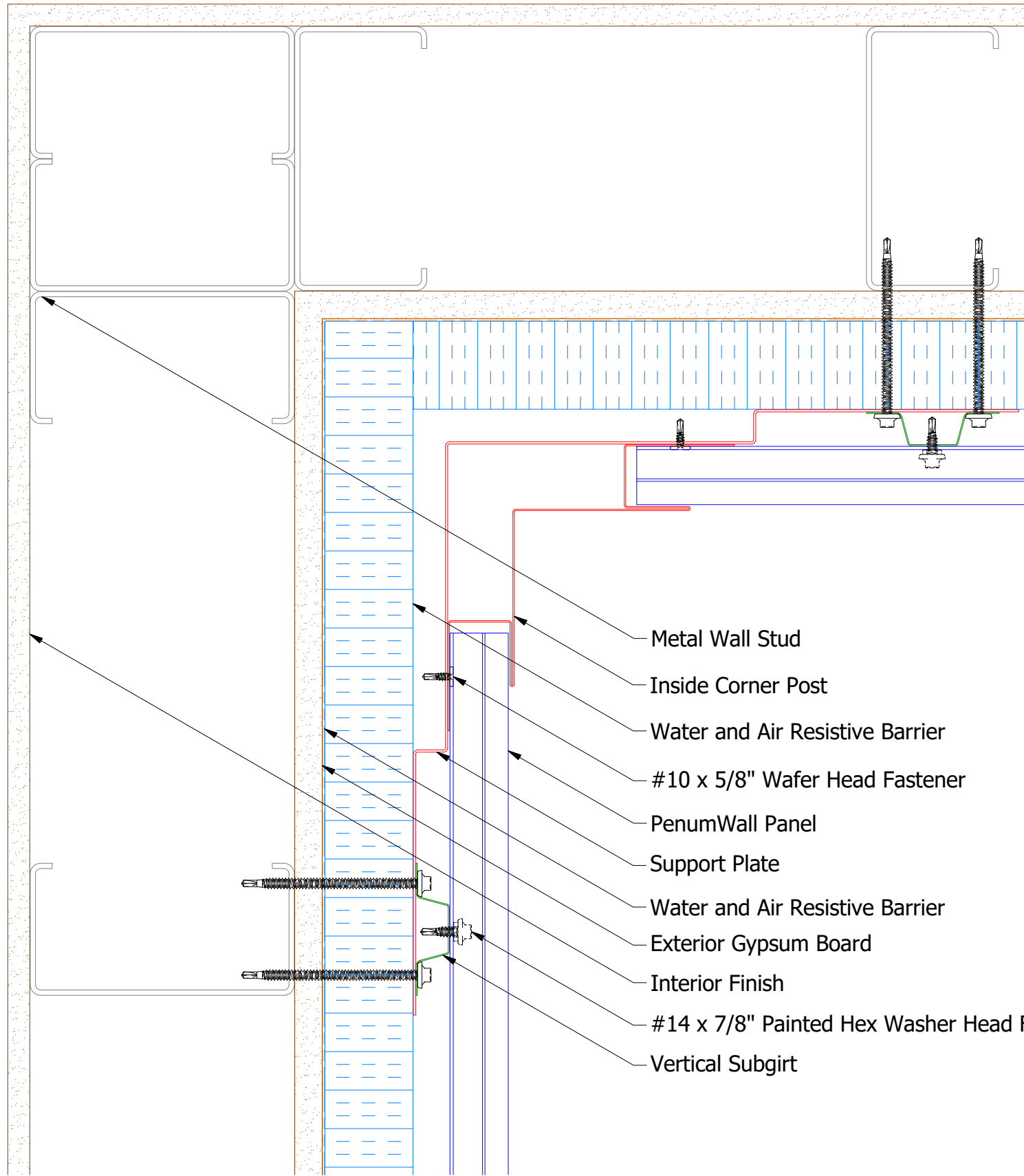
BPA138-J Channel

**Note:** \* denotes color side.

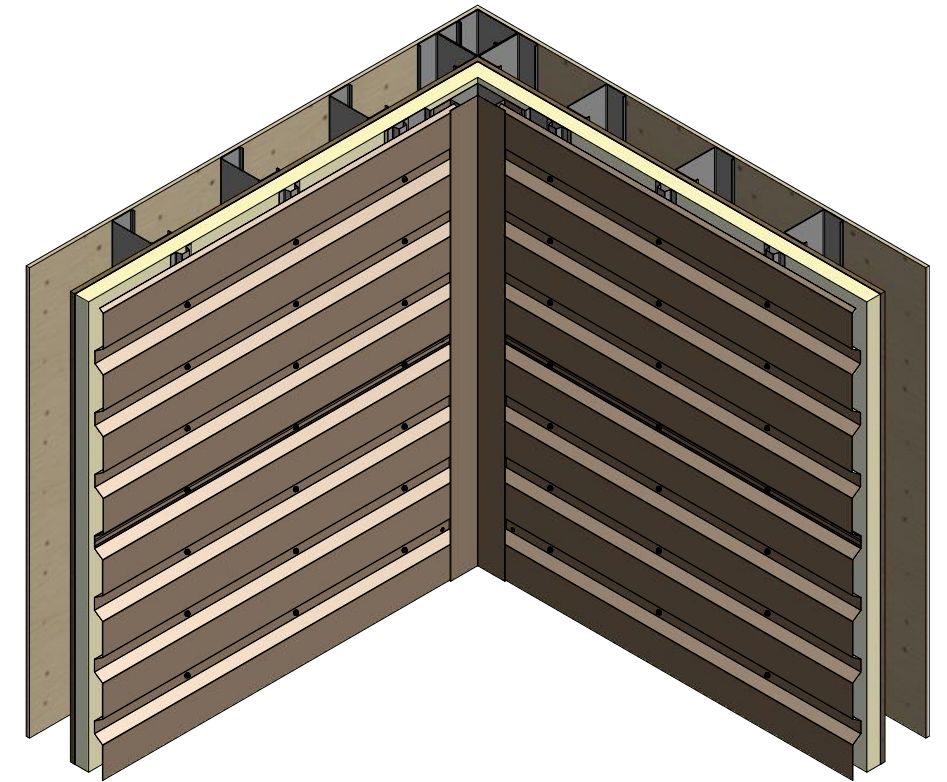
**ATAS** ATAS INTERNATIONAL, INC  
 Allentown PA  
 610-395-8445  
 Mesa AZ  
 480-558-7210

TITLE				PenumWall Open Endwall Detail			
DWG. NO.		DR		DATE		DATE	
1		DMR		4/18/2017		DATE	
REV. NO.		BY		SH. SIZE		SCALE	
4/16/2021		DMR		B		X:X	
DESCRIPTION OF REVISION		APP		SCALE		X:X	
Added color side note.		APP		SCALE		X:X	

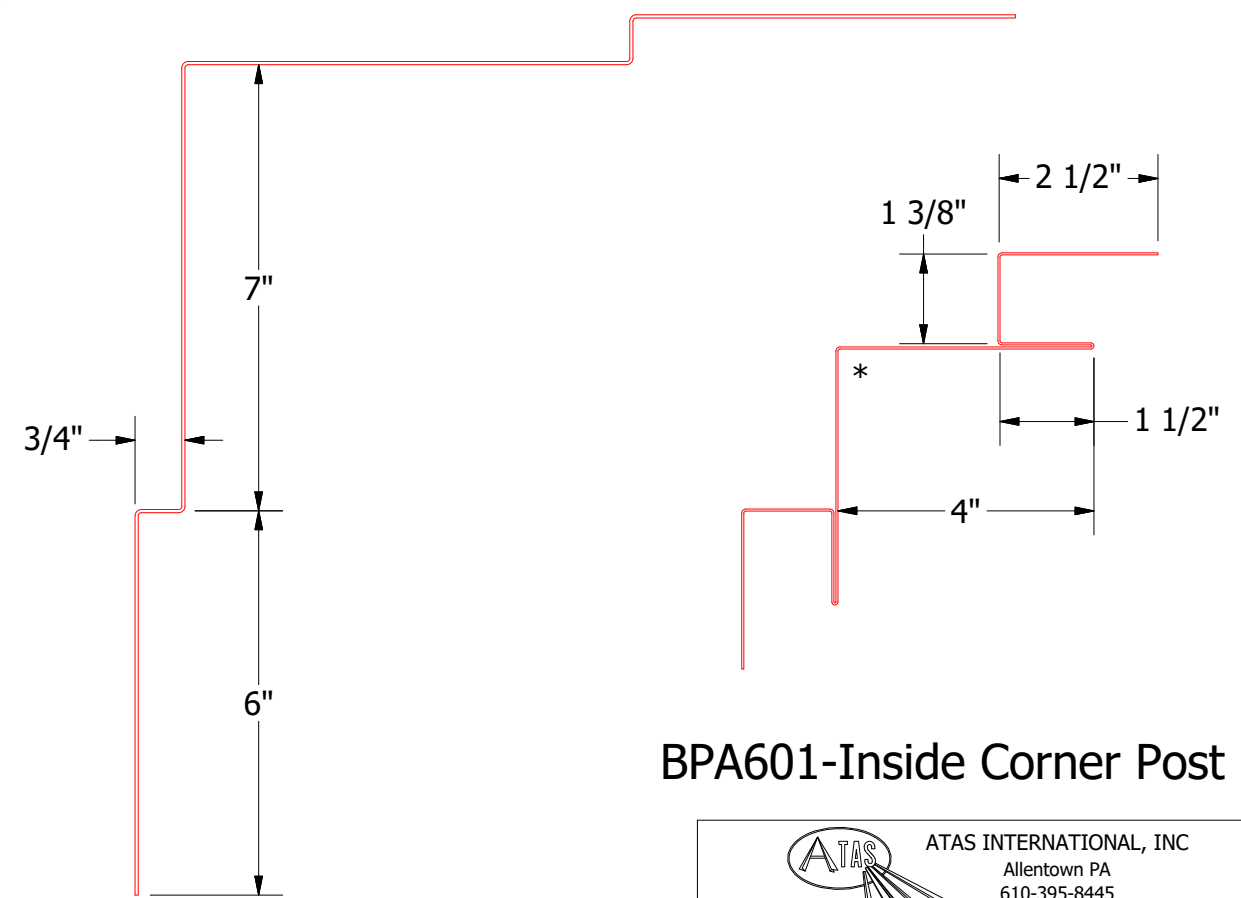
# Horizontal Panel



Alternate Subgirt Orientation



- Metal Wall Stud
- Inside Corner Post
- Water and Air Resistive Barrier
- #10 x 5/8" Wafer Head Fastener
- PenumWall Panel
- Support Plate
- Water and Air Resistive Barrier
- Exterior Gypsum Board
- Interior Finish
- #14 x 7/8" Painted Hex Washer Head Fastener with Washer
- Vertical Subgirt



Support Plate

BPA601-Inside Corner Post

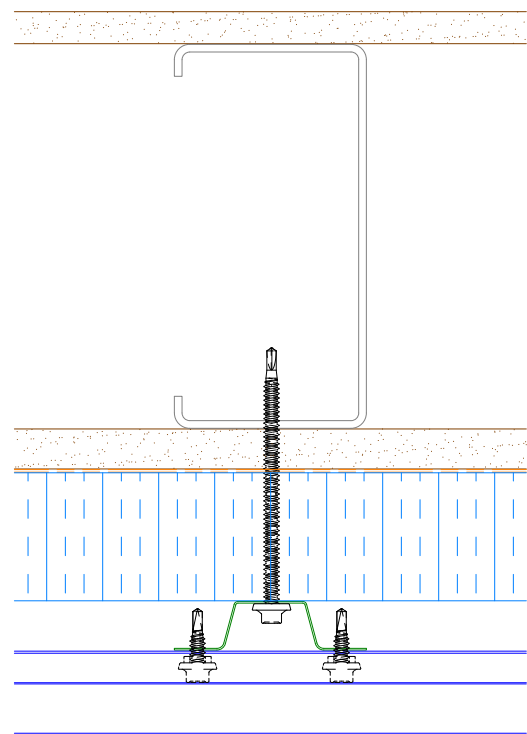
**NOTE:** Optional 18 GA. Plate for Outside Corner Post is Available  
**Note:** \* denotes color side.

**ATAS** ATAS INTERNATIONAL, INC  
 Allentown PA  
 610-395-8445  
 Mesa AZ  
 480-558-7210

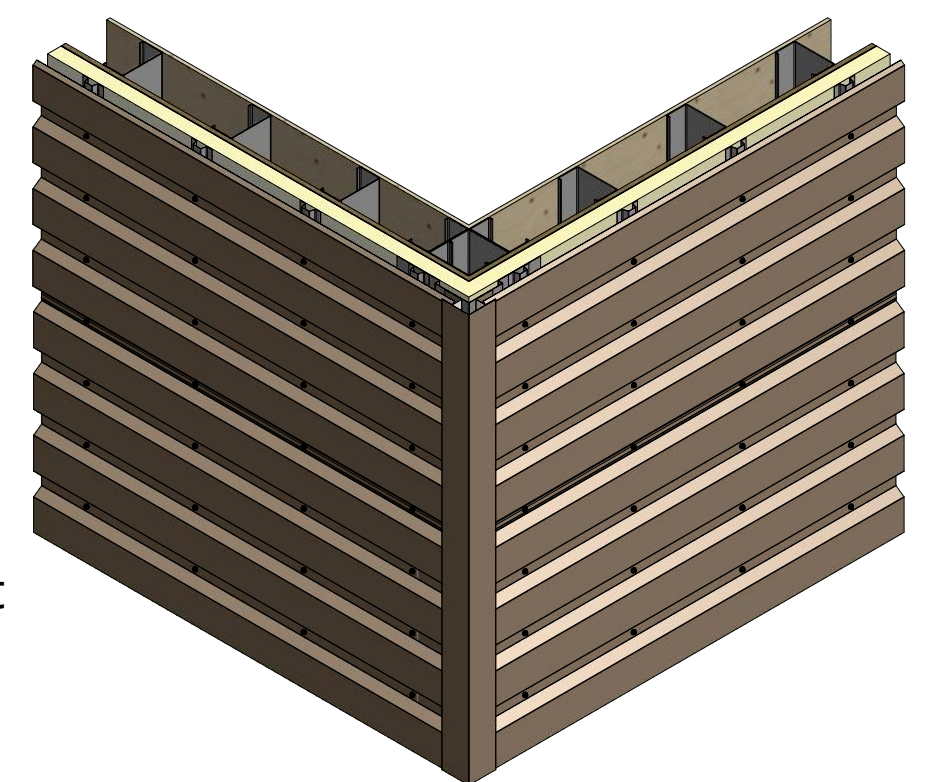
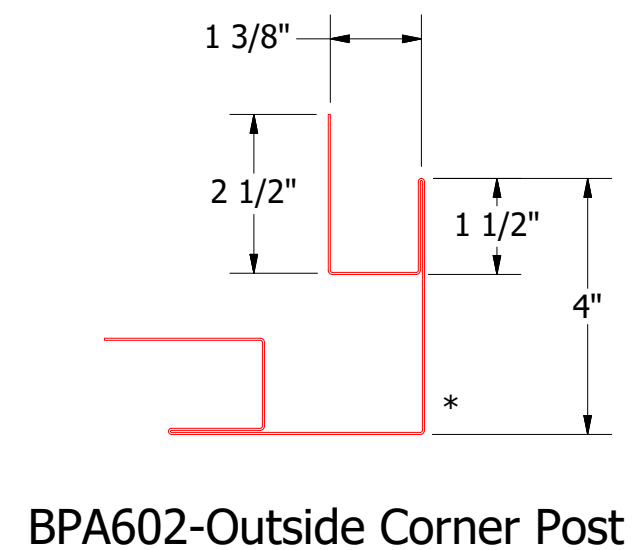
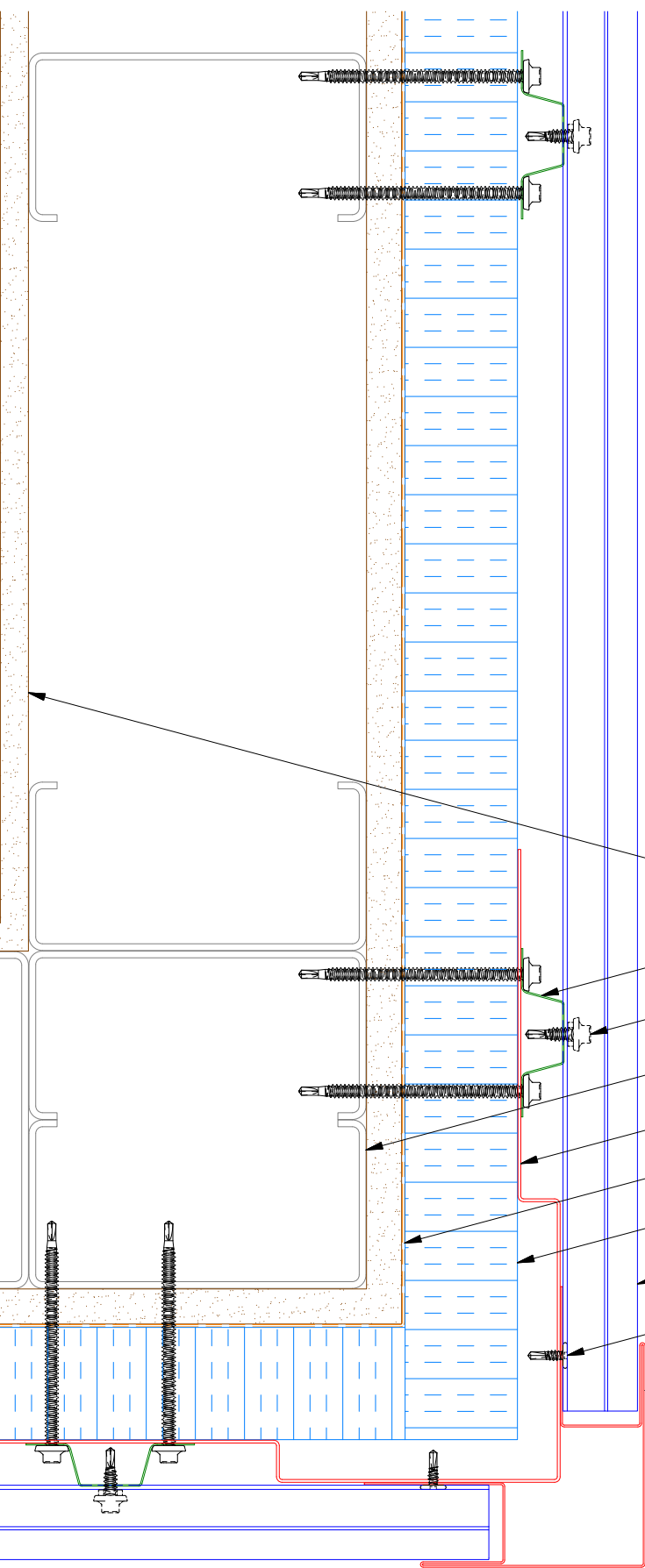
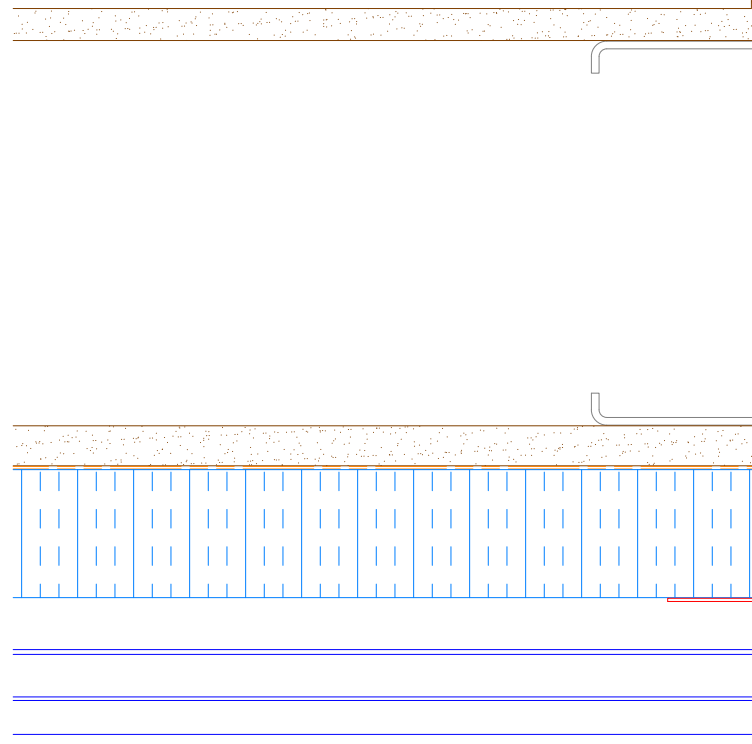
REV. NO.	DATE	DESCRIPTION OF REVISION	BY	APP	TITLE	DR	DMR	DATE	
1	4/16/2021	Added color side note.	DMR		PenumWall Open Inside Corner Detail			4/20/2017	
						MATERIAL			
						SH. SIZE	B	SCALE	X:X



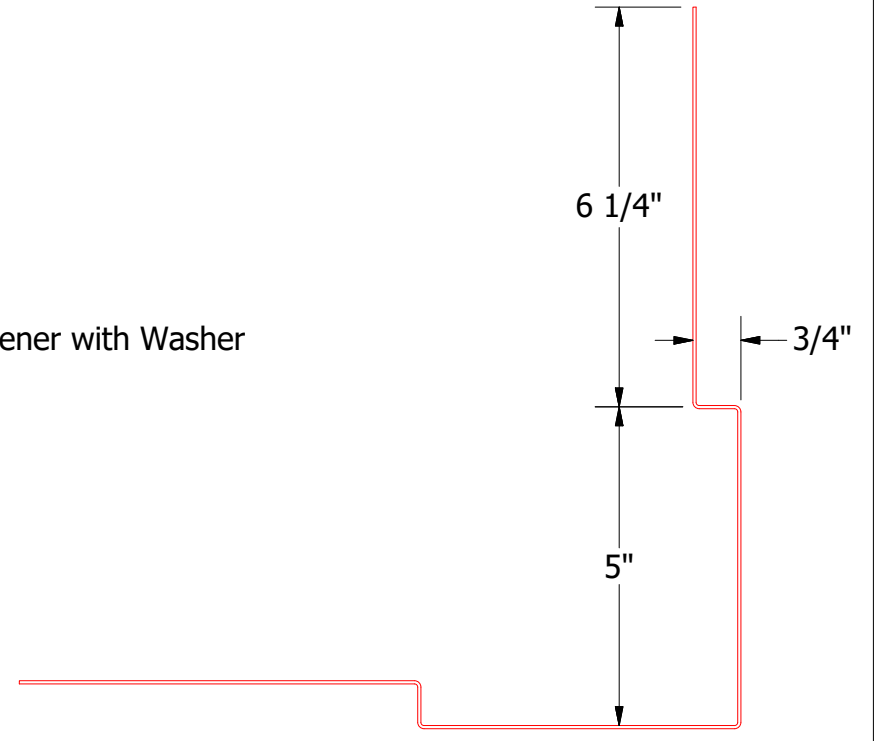
### Horizontal Panel



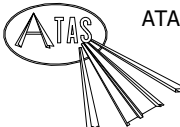
### Alternate Subgirt Orientation



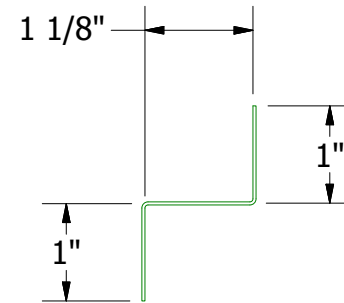
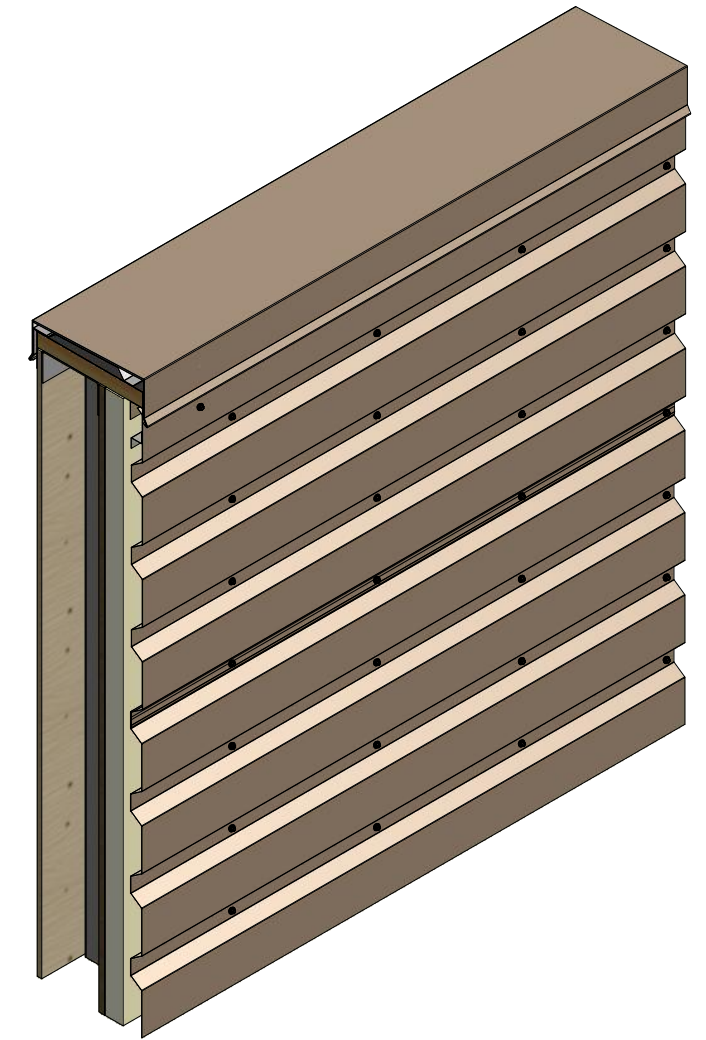
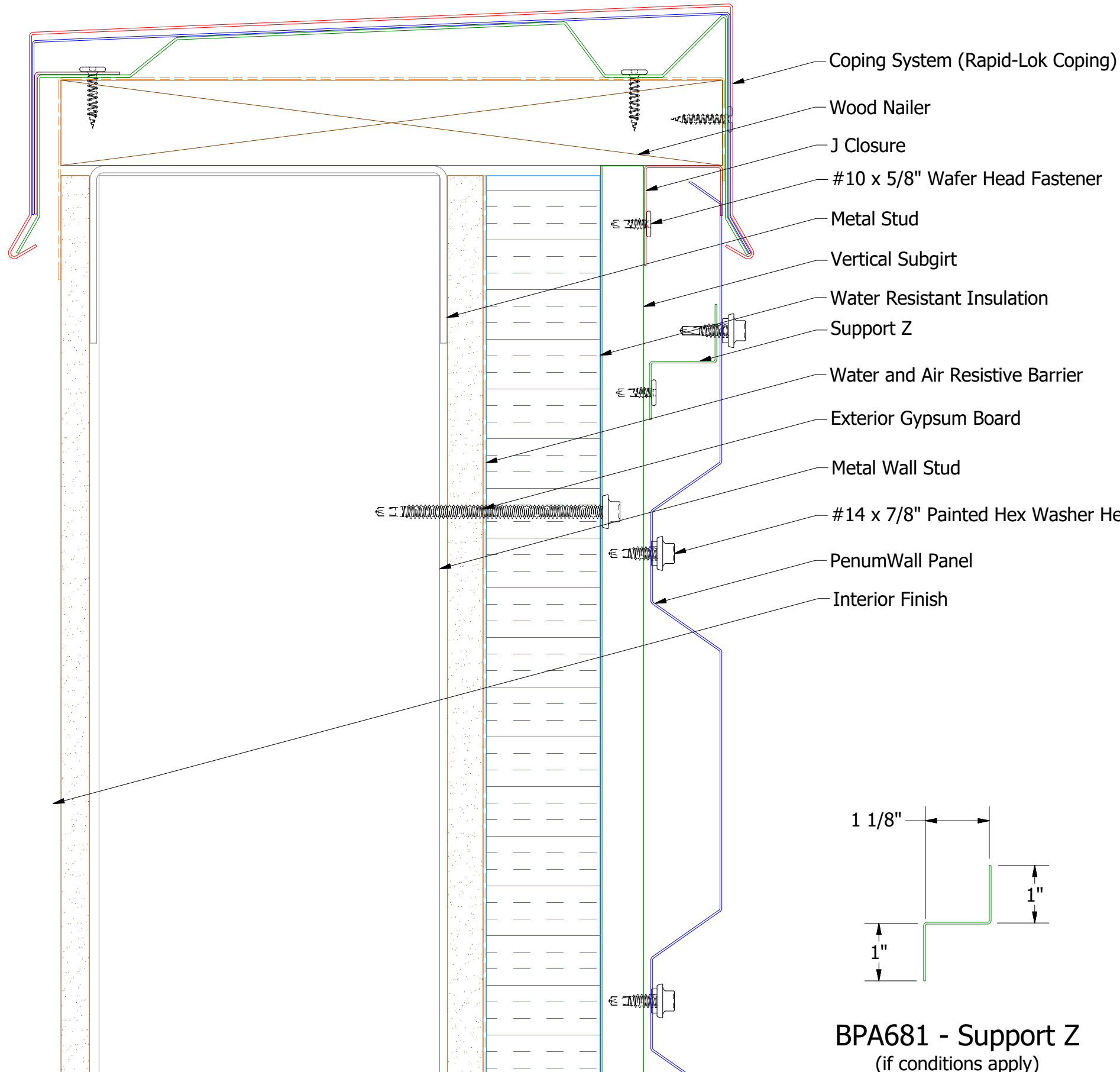
- Interior Finish
- Vertical Subgirt
- #14 x 7/8" Painted Hex Washer Head Fastener with Washer
- Metal Wall Stud
- Support Plate
- Water and Air Resistive Barrier
- Water Resistant Insulation
- PenumWall Panel
- #10 x 5/8" Wafer Head Fastener
- Outside Corner Post



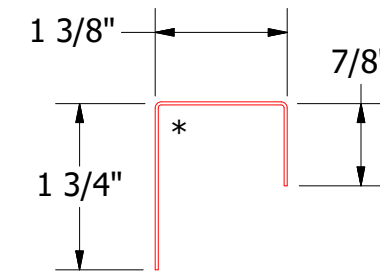
**NOTE:** Optional 18 GA. Plate for Outside Corner Post is Available  
**Note:** \* denotes color side.

					 <b>ATAS INTERNATIONAL, INC</b> Allentown PA 610-395-8445 Mesa AZ 480-558-7210	
					TITLE <b>PenumWall Open Outside Corner Detail</b>	
REV. NO.			DATE		DR	
1			4/20/2021		DMR	
DATE			DESCRIPTION OF REVISION		DATE	
					APP	
					MATERIAL	
					SH. SIZE	
					B	
					SCALE	
					X:X	

# Horizontal Panel

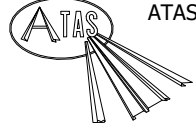


**BPA681 - Support Z**  
(if conditions apply)

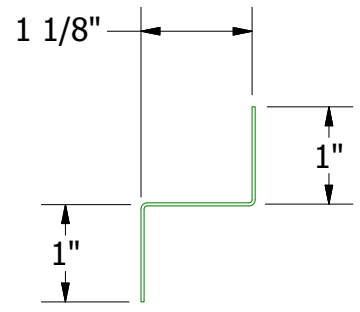


**BPA270-J Closure**

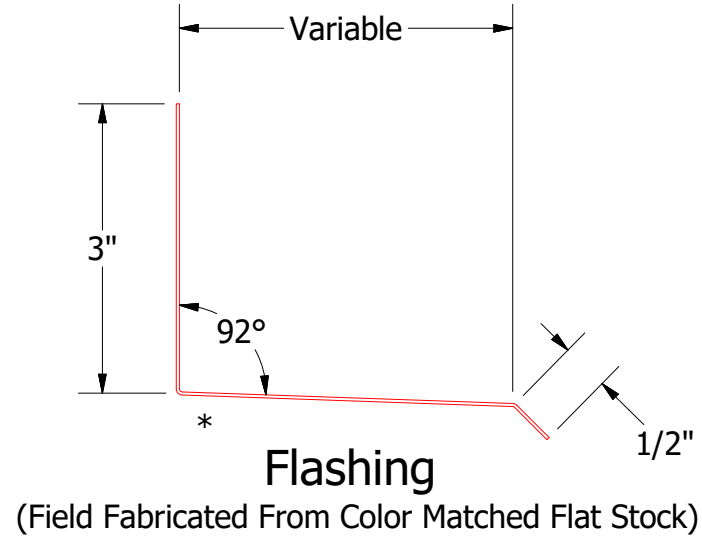
**Note:** \* denotes color side.

 <b>ATAS INTERNATIONAL, INC</b> Allentown PA 610-395-8445 Mesa AZ 480-558-7210		<b>TITLE</b> PenumWall Open Top of Wall Detail			
		DWG. NO. DR DMR APP DATE	DATE 4/24/2017		
1 REV. NO.	4/20/2021 DATE	Added Support Z Trim and color side note. DESCRIPTION OF REVISION	DMR BY	MATERIAL SH. SIZE B	SCALE X:X

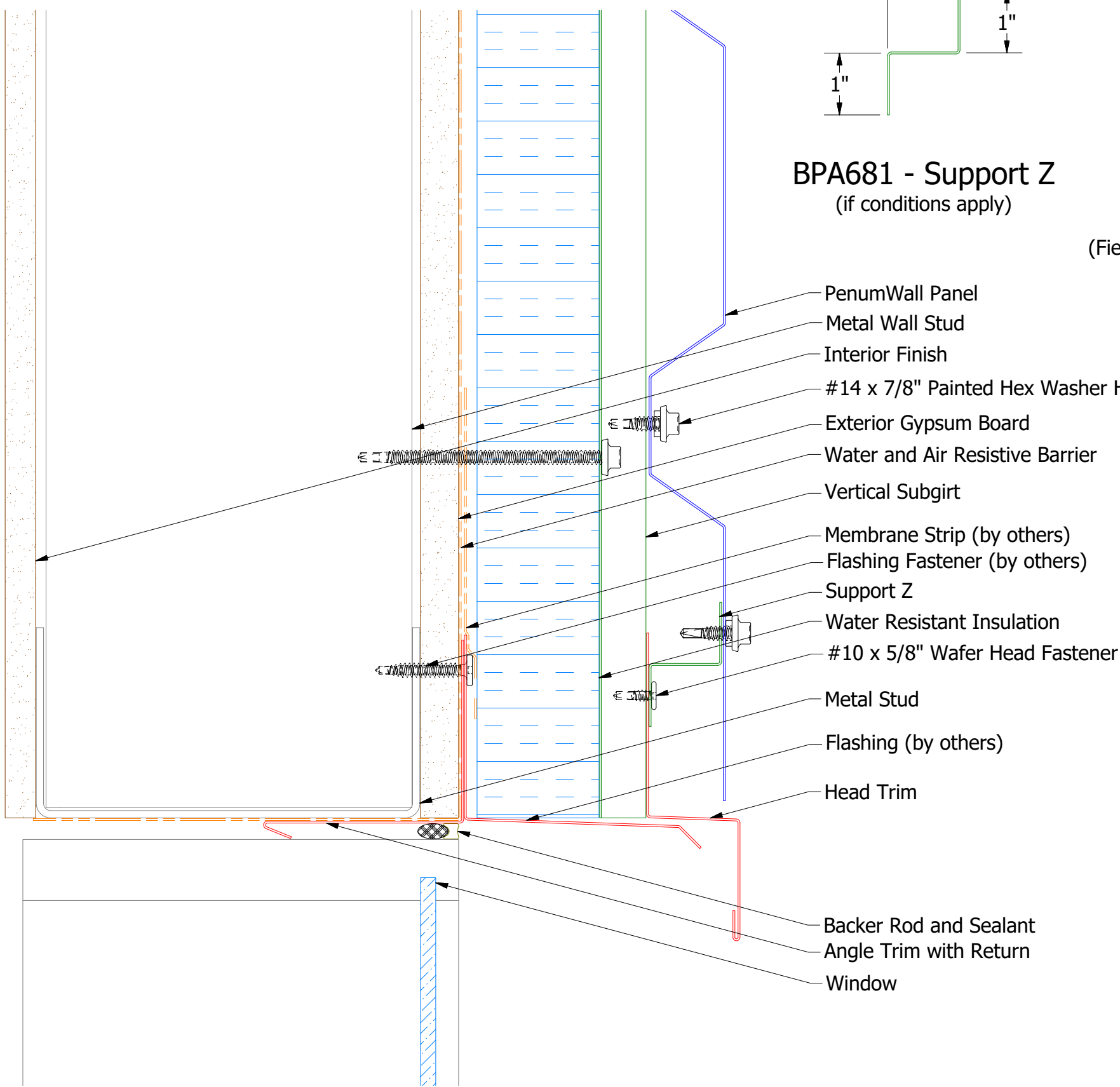
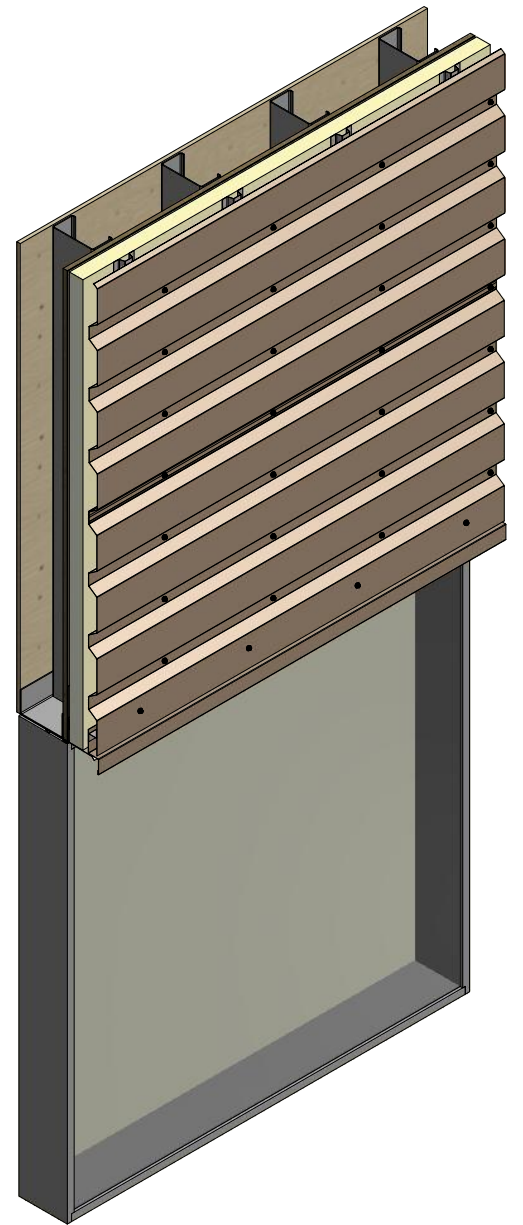

# Horizontal Panel



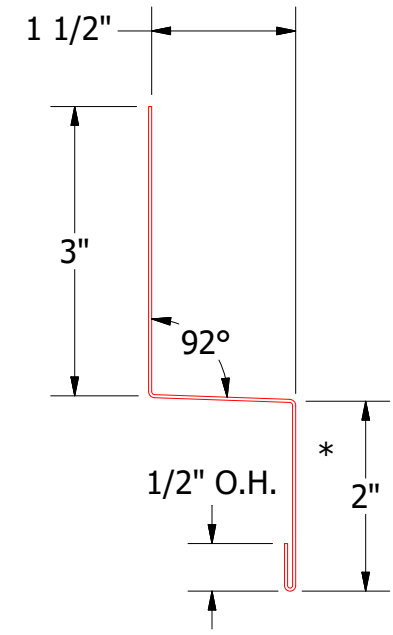
**BPA681 - Support Z**  
(if conditions apply)



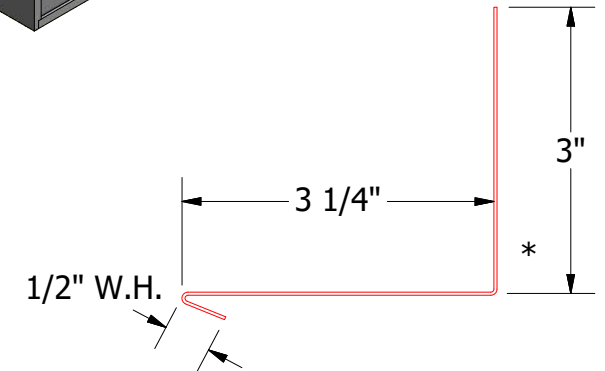
**Flashing**  
(Field Fabricated From Color Matched Flat Stock)



- PenumWall Panel
- Metal Wall Stud
- Interior Finish
- #14 x 7/8" Painted Hex Washer Head Fastener with Washer
- Exterior Gypsum Board
- Water and Air Resistive Barrier
- Vertical Subgirt
- Membrane Strip (by others)
- Flashing Fastener (by others)
- Support Z
- Water Resistant Insulation
- #10 x 5/8" Wafer Head Fastener
- Metal Stud
- Flashing (by others)
- Head Trim
- Backer Rod and Sealant
- Angle Trim with Return
- Window



**BPA550-Head Trim**



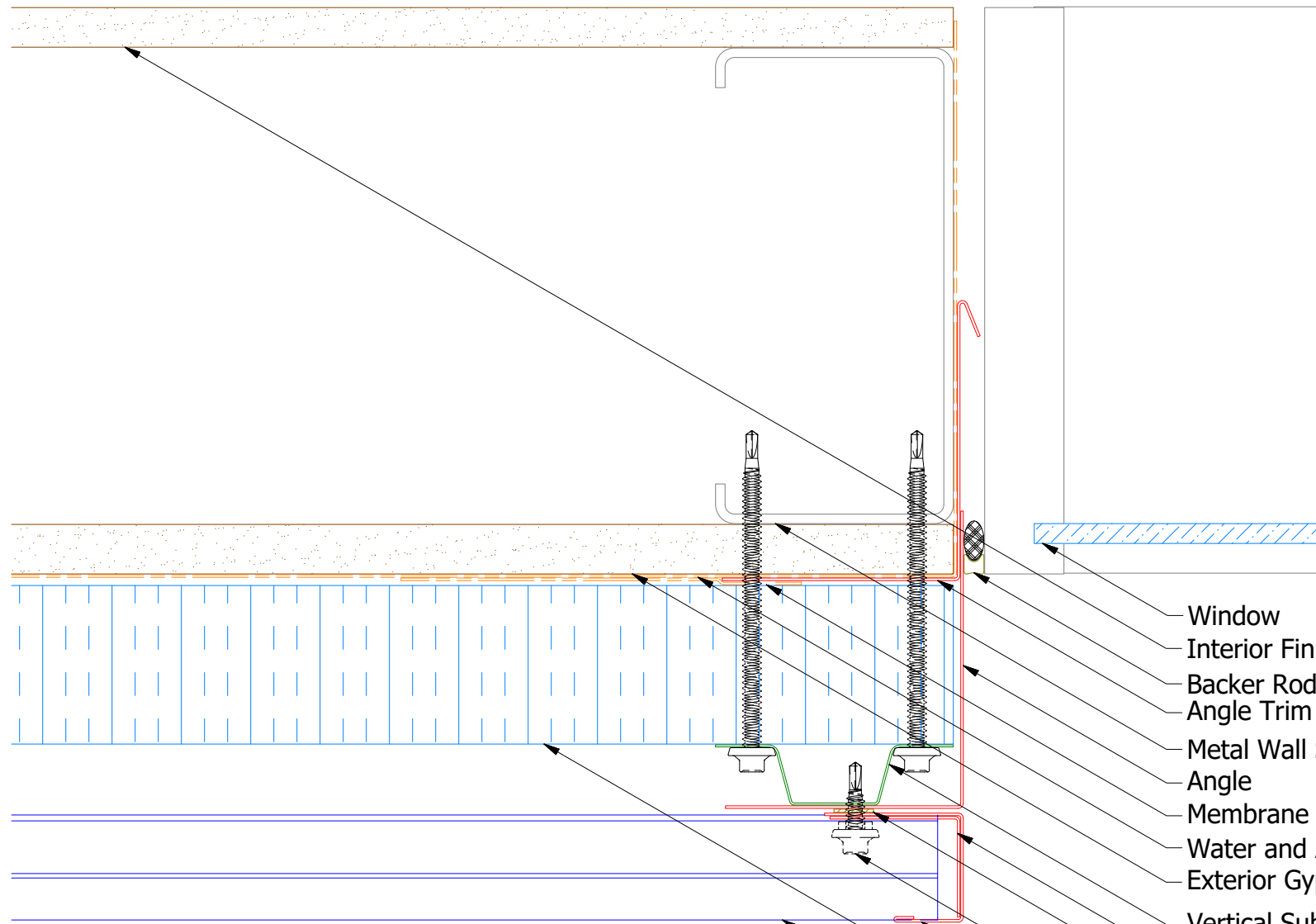
**BPA683-Angle Trim with Fastener**

**Note:** \* denotes color side.

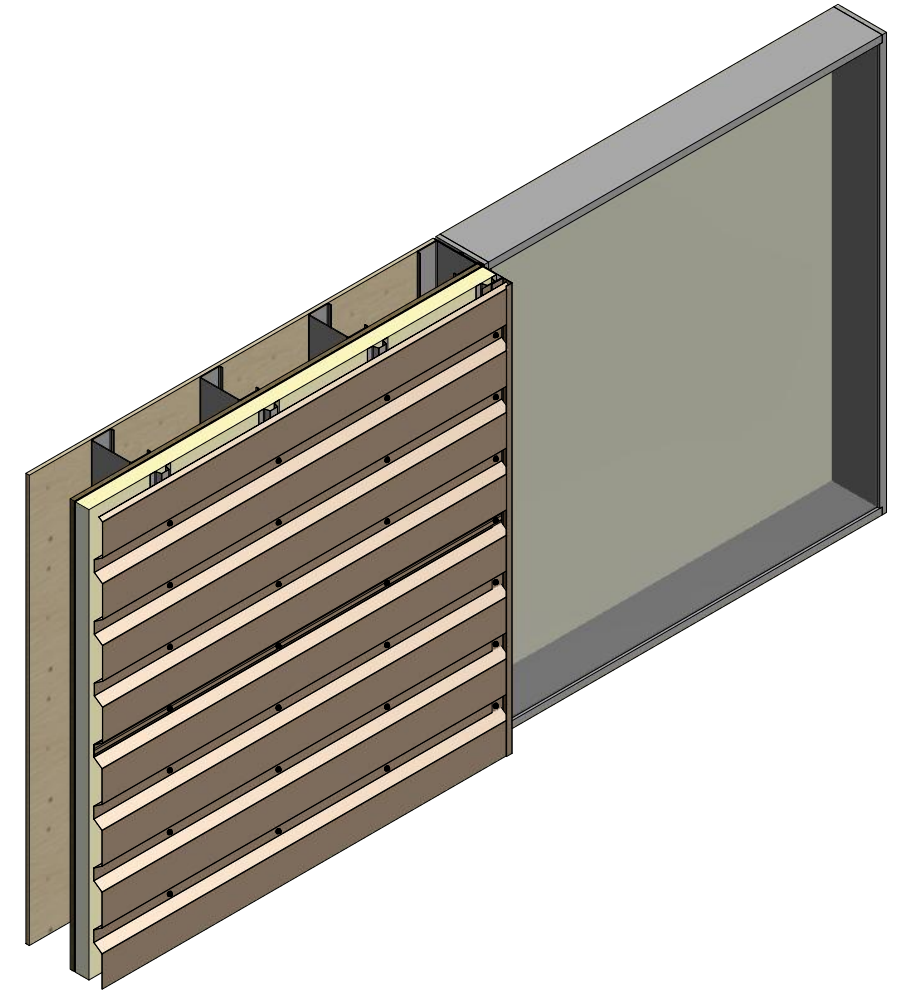
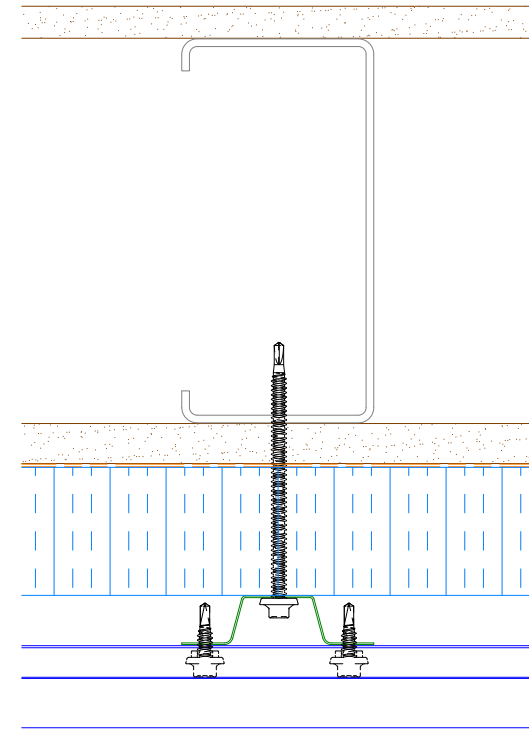
**ATAS** ATAS INTERNATIONAL, INC  
 Allentown PA  
 610-395-8445  
 Mesa AZ  
 480-558-7210

TITLE				PenumWall Open Head Detail			
DWG. NO.		DR		DATE		4/20/2017	
1		DMR		APP		DATE	
REV. NO.		DATE		DESCRIPTION OF REVISION		BY APP	
1		4/16/2021		Added Support Z Trim and color side note.		DMR	
SH. SIZE		SCALE		X:X		B	

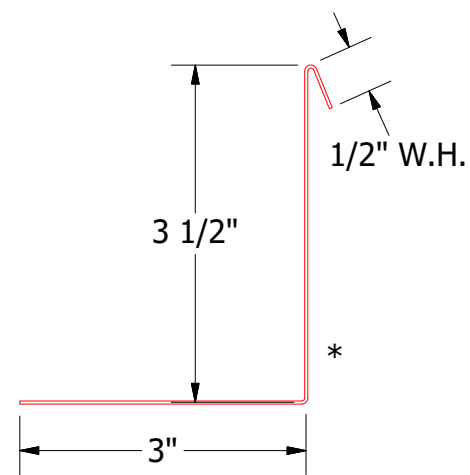
# Horizontal Panel



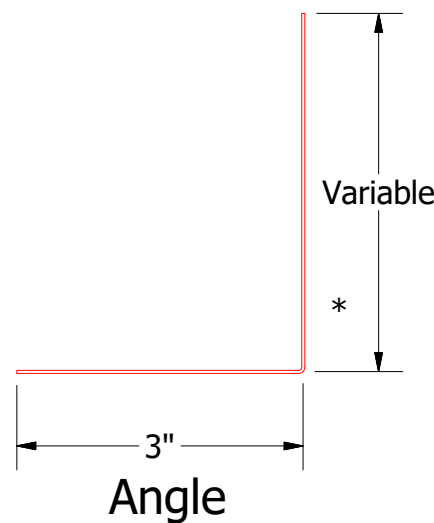
## Alternate Subgirt Orientation (NTS)



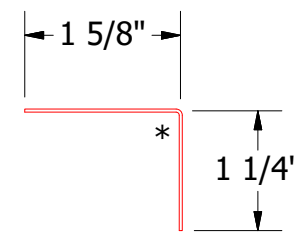
- Window
- Interior Finish
- Backer Rod and Sealant
- Angle Trim with Return
- Metal Wall Stud
- Angle
- Membrane Strip over Angle Trim with Return
- Water and Air Resistive Barrier
- Exterior Gypsum Board
- Vertical Subgirt
- Angle Trim
- Butyl Tape
- #14 x 7/8" Painted Hex Washer Head Fastener with Washer
- J Channel
- Water Resistant Insulation
- PenumWall Panel



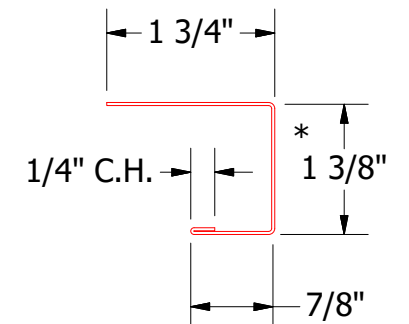
**BPA683-Angle Trim with Return**



**Angle**



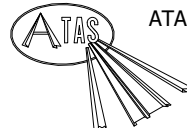
**BPA280-Angle Trim**



**BPA138-J Channel**

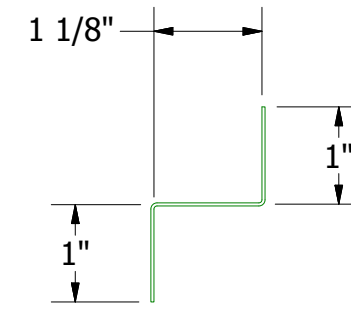
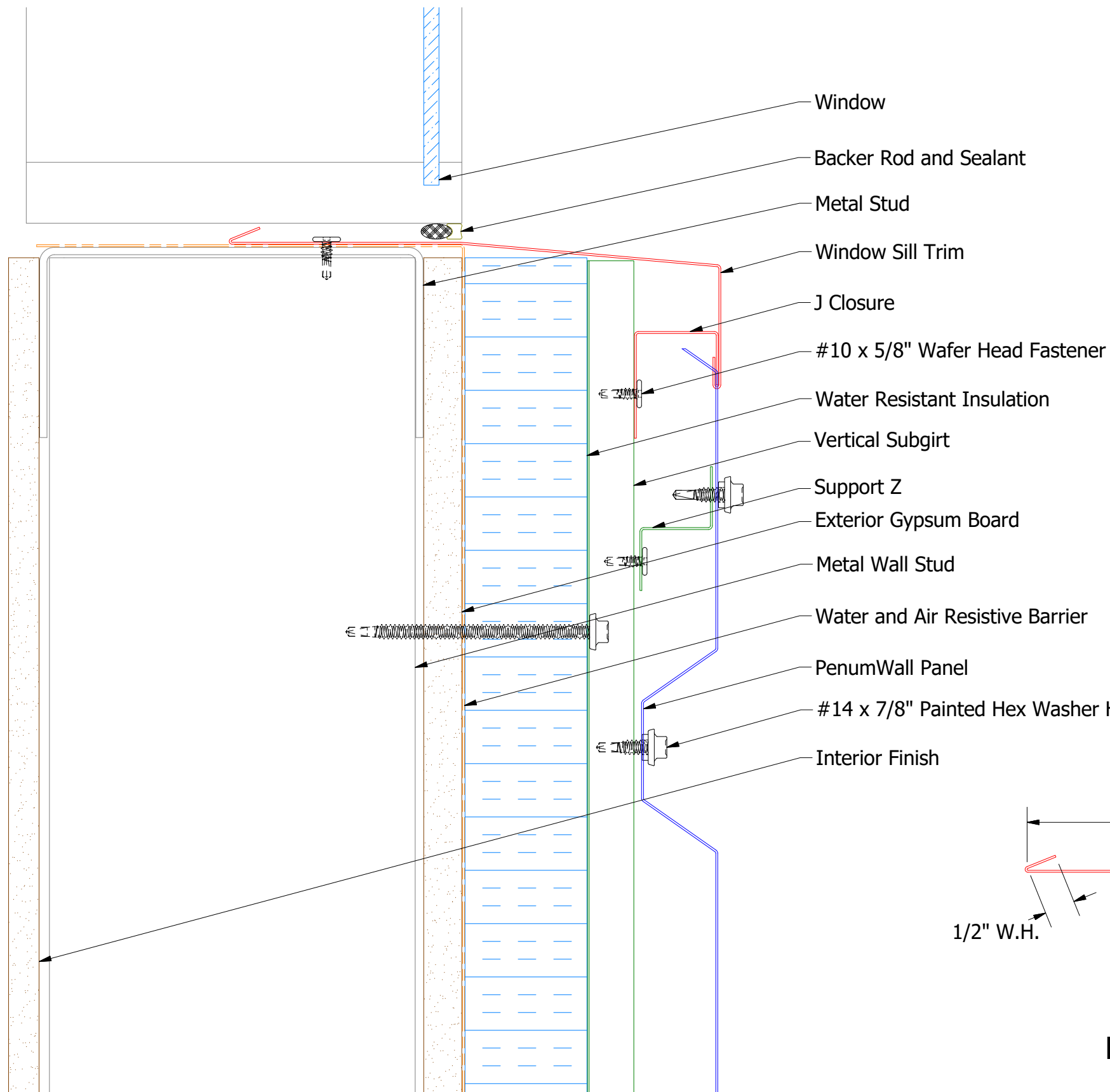
**Note:** \* denotes color side.

REV. NO.	DATE	DESCRIPTION OF REVISION	BY	APP
1	4/16/2021	Added color side note.	DMR	

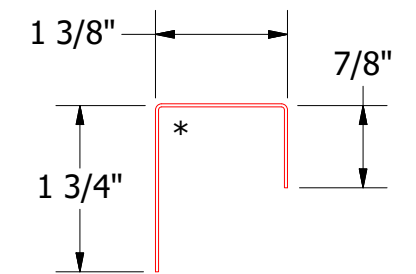
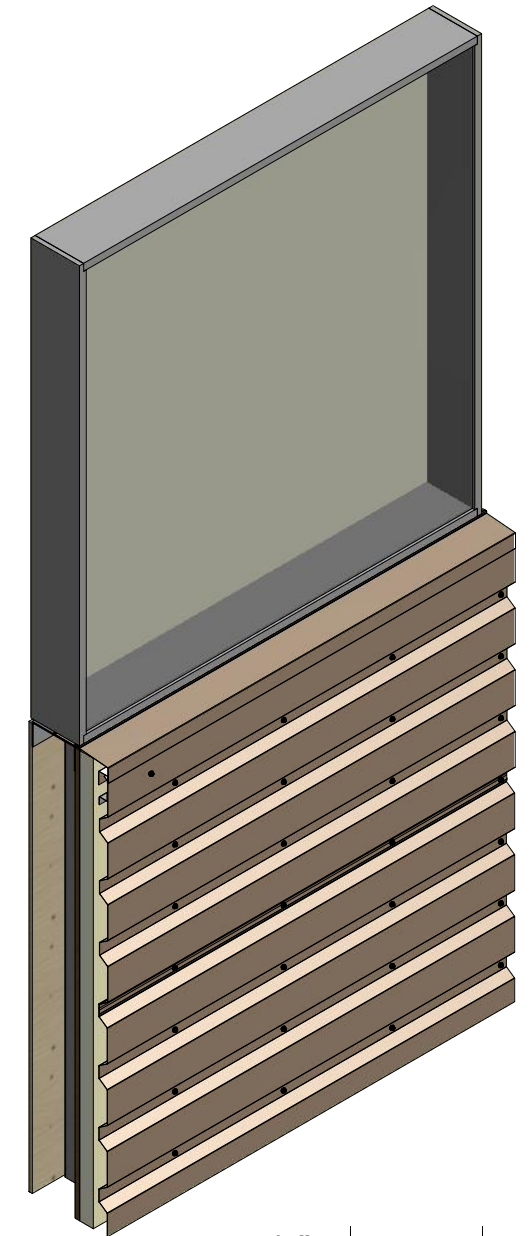
 <b>ATAS INTERNATIONAL, INC</b> Allentown PA 610-395-8445 Mesa AZ 480-558-7210		
TITLE <b>PenumWall Open Jamb Detail</b>		
DWG. NO.	DR	DATE
	DMR	4/20/2017
MATERIAL	APP	DATE
SH. SIZE	B	SCALE
		X:X



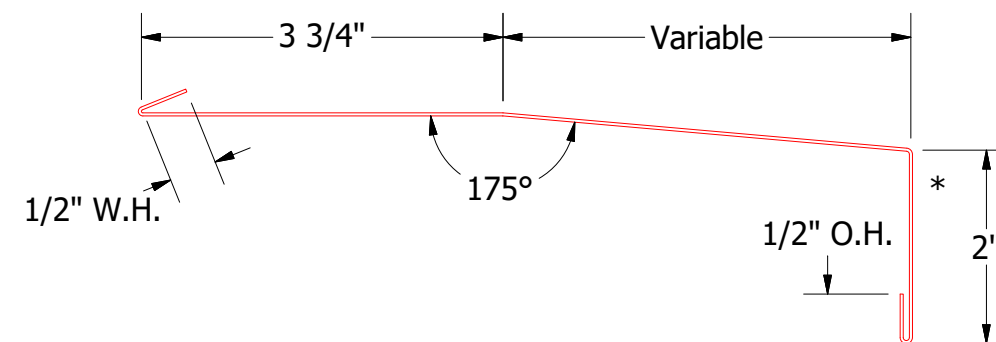
# Horizontal Panel



**BPA681 - Support Z**  
(if conditions apply)



**BPA270-J Closure**



**BPA670-Window Sill Trim**

**Note:** \* denotes color side.

ATAS INTERNATIONAL, INC Allentown PA 610-395-8445 Mesa AZ 480-558-7210		TITLE PenumWall Open Window Sill Detail		
		DWG. NO.	DR	DATE
1	4/20/2021	Added Support Z Trim and color side note.	DMR	4/24/2017
REV. NO.	DATE	DESCRIPTION OF REVISION	BY	APP
			SH. SIZE	SCALE
			B	X:X