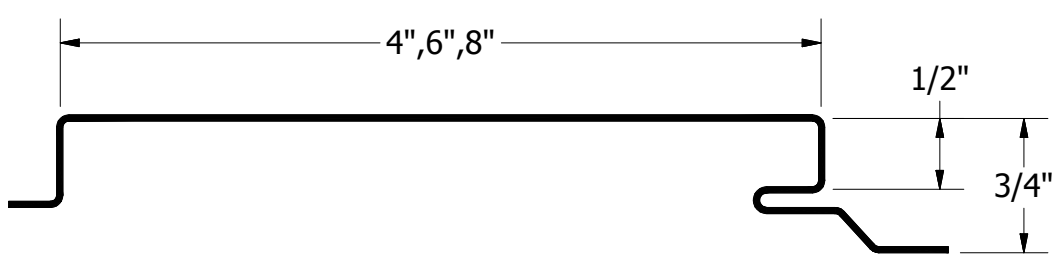
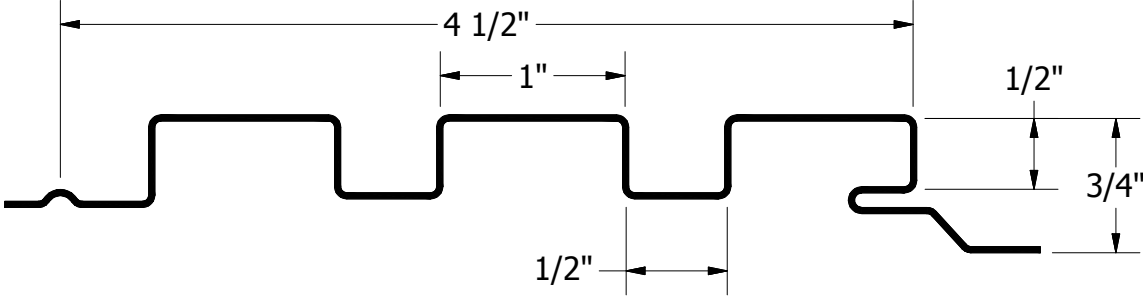


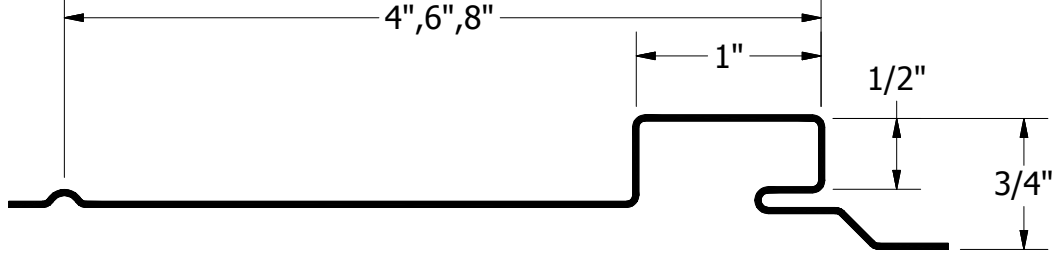
OPF



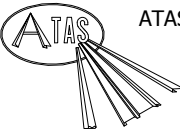
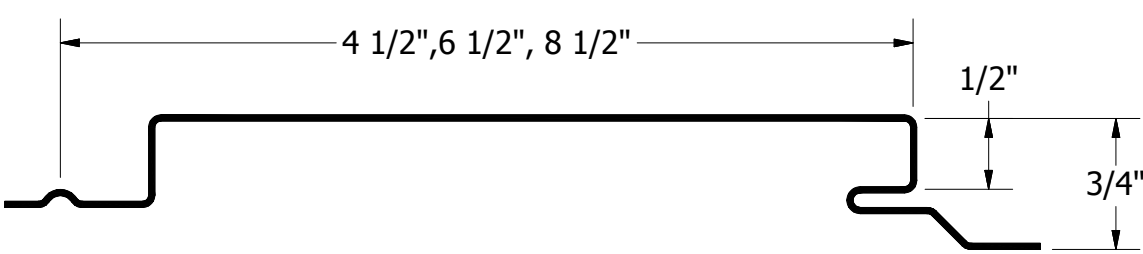
OPM



OPN



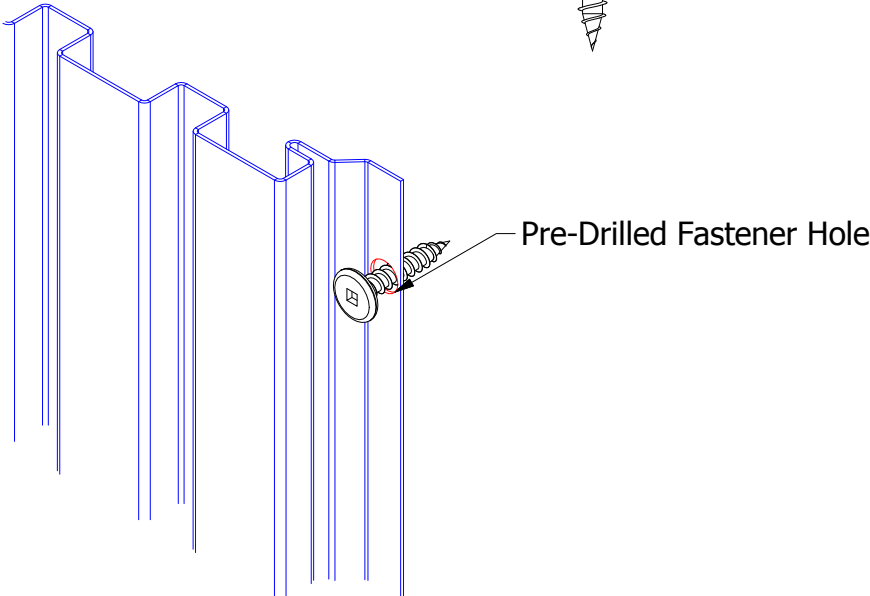
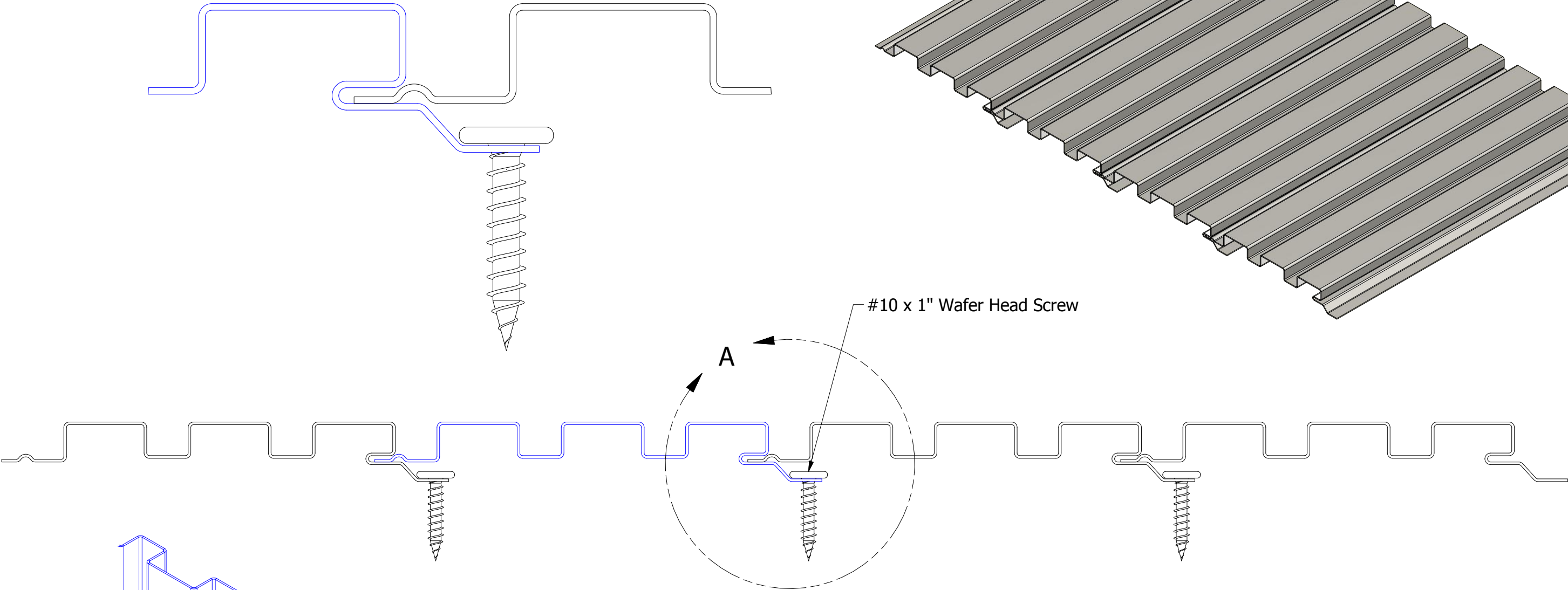
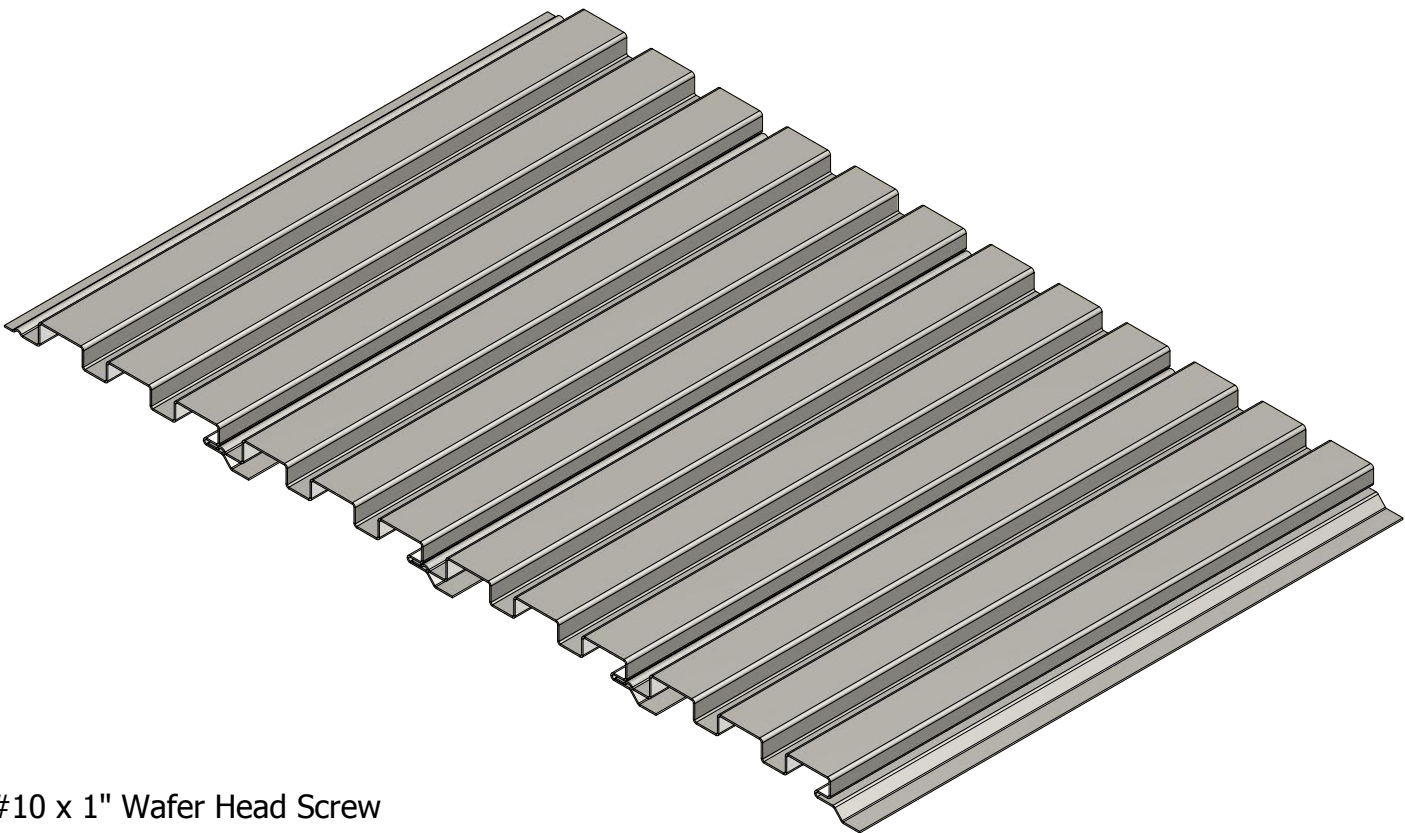
OPW




ATAS INTERNATIONAL, INC  
Allentown PA  
610-395-8445  
Mesa AZ  
480-558-7210

TITLE			Opaline Line Drawing Detail		
DWG. NO.			DR	KRK	DATE 4/16/2015
			APP	DAS	DATE 8/4/16
MATERIAL			SH. SIZE	B	SCALE X:X

REV. NO.	DATE	DESCRIPTION OF REVISION	BY	APP

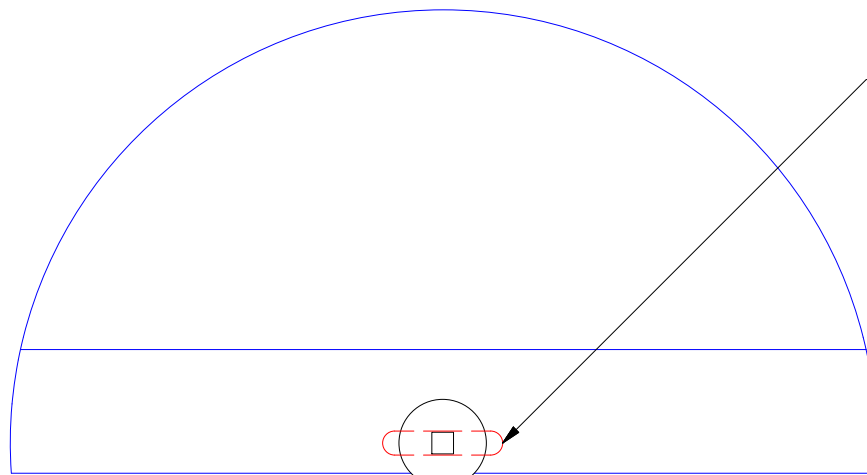
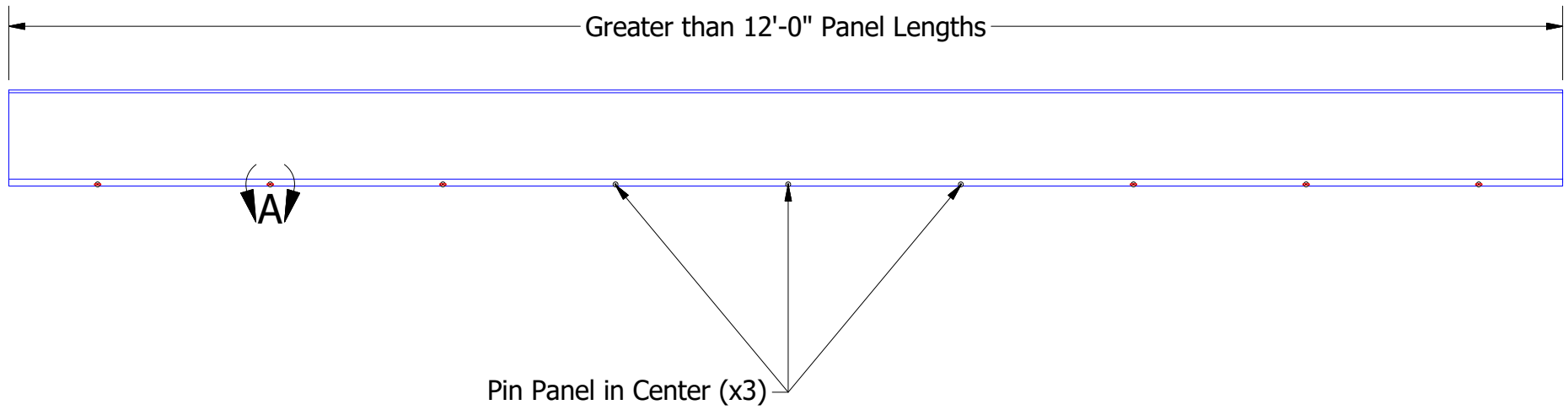


Pre-Drill Fastener Holes for Panels Greater than 20'-0" in Length

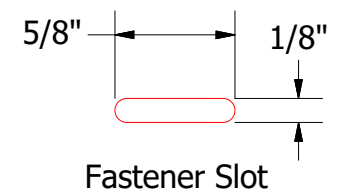


ATAS INTERNATIONAL, INC  
Allentown PA  
610-395-8445  
Mesa AZ  
480-558-7210

TITLE Opaline Panel Installation Detail			
DWG. NO.		DR DMR	DATE 10/18/2016
MATERIAL		APP	DATE
REV. NO.	DATE	DESCRIPTION OF REVISION	BY APP
SH. SIZE B		SCALE X:X	



Field Pre-Punch Fastener Slots to allow for Panel Expansion and Contraction.



DETAIL A

Secure Fastener in Center of the Slot

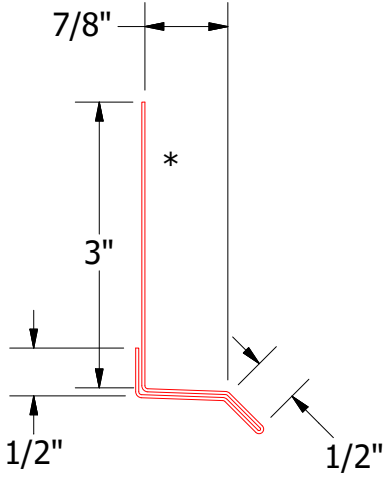
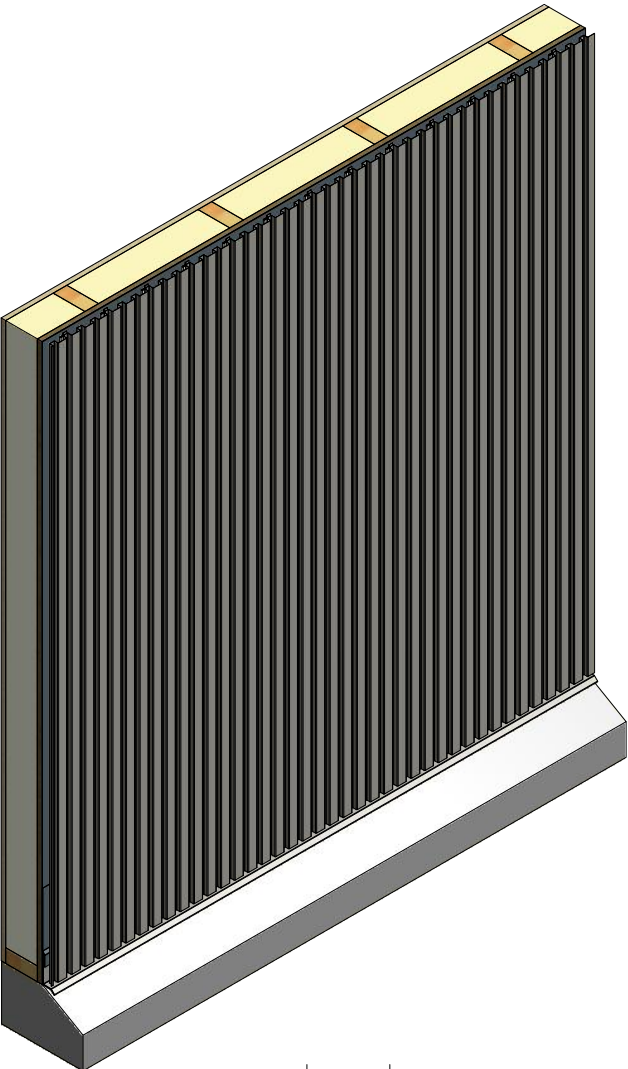
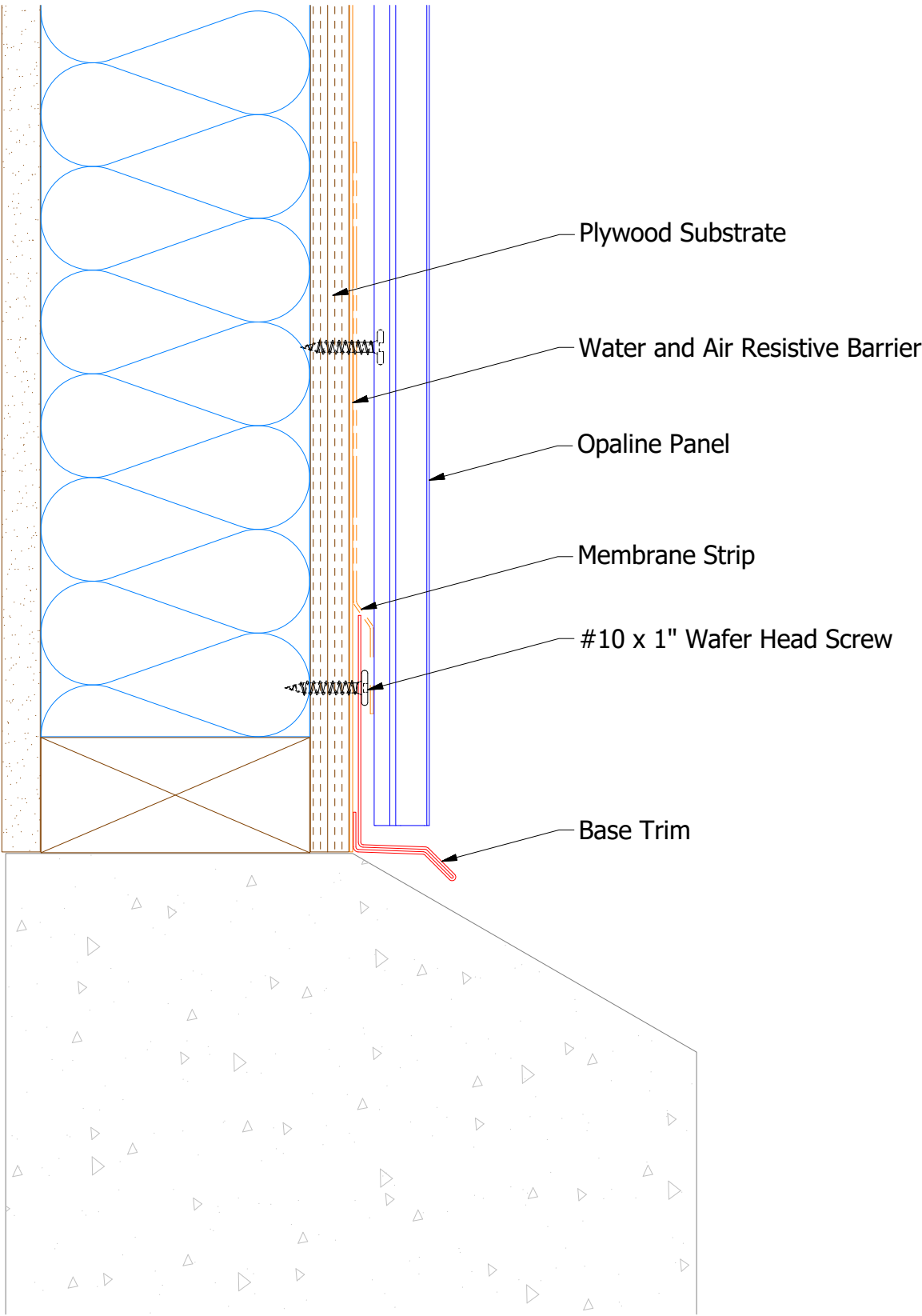


ATAS INTERNATIONAL, INC  
Allentown PA  
610-395-8445  
Mesa AZ  
480-558-7210

TITLE			Opaline Fastener Slots Detail	
DWG. NO.			DR	DATE
			DMR	5/13/2021
MATERIAL			APP	DATE
			SH. SIZE	SCALE
			A	X:X

REV. NO.	DATE	DESCRIPTION OF REVISION	BY	APP

Vertical Panel

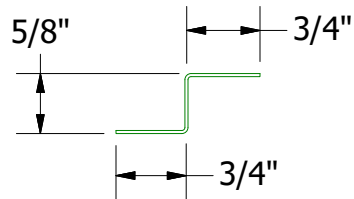
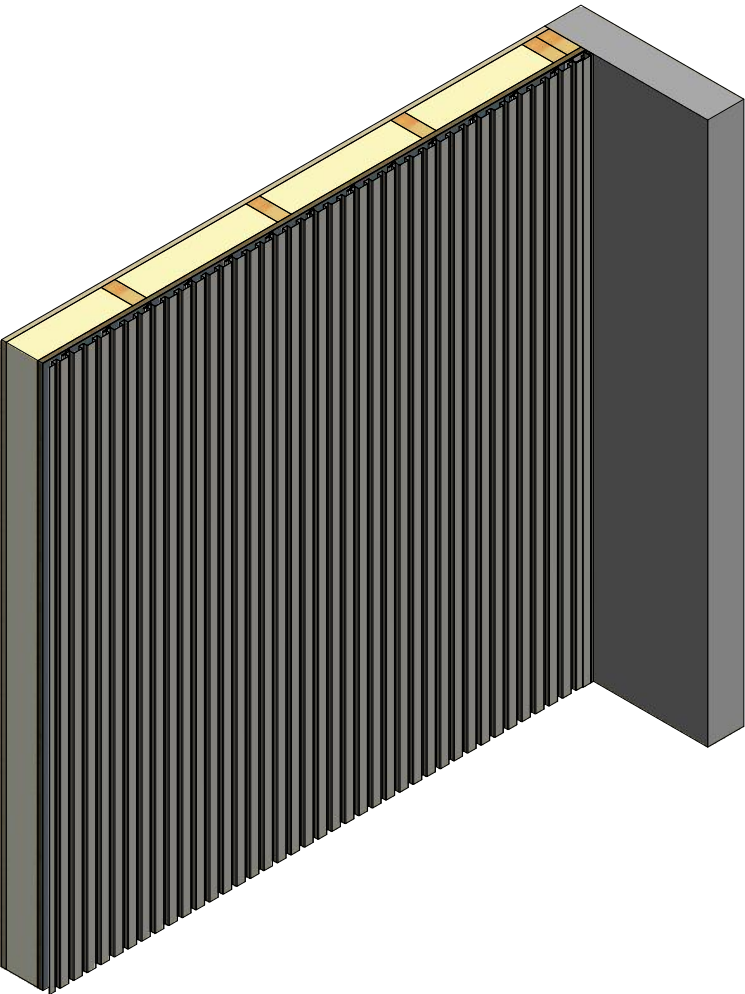
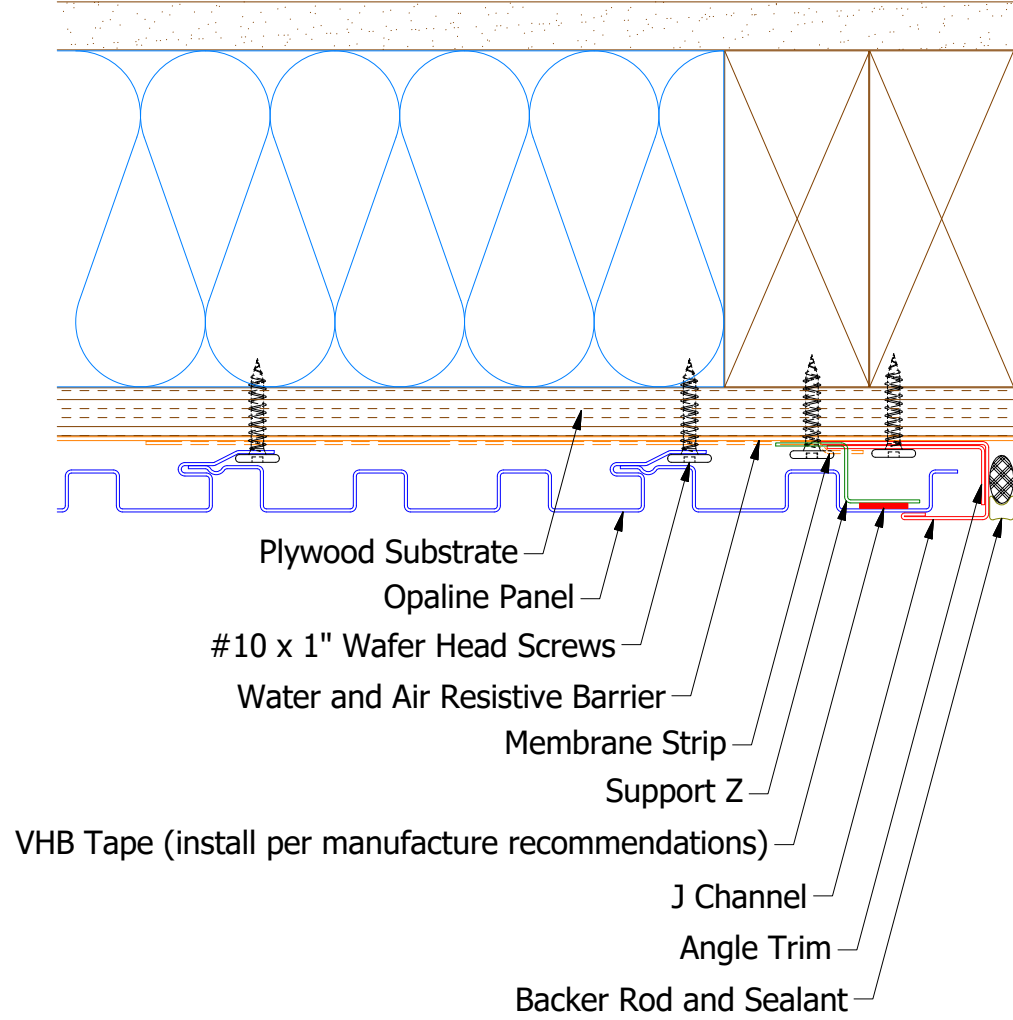


OPA661 - Base Trim

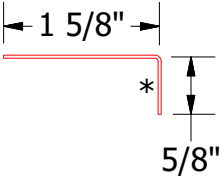
Note: \* denotes color side.

</									

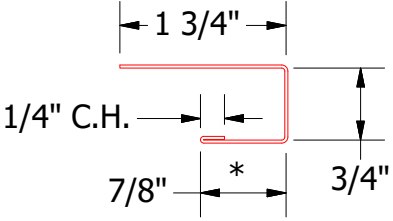
Vertical Panel



OPA681 - Support Z

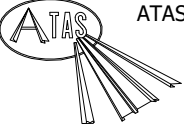


OPA680 - Angle Trim



OPA034 - J Channel

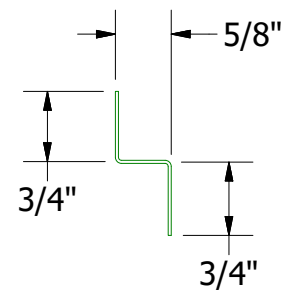
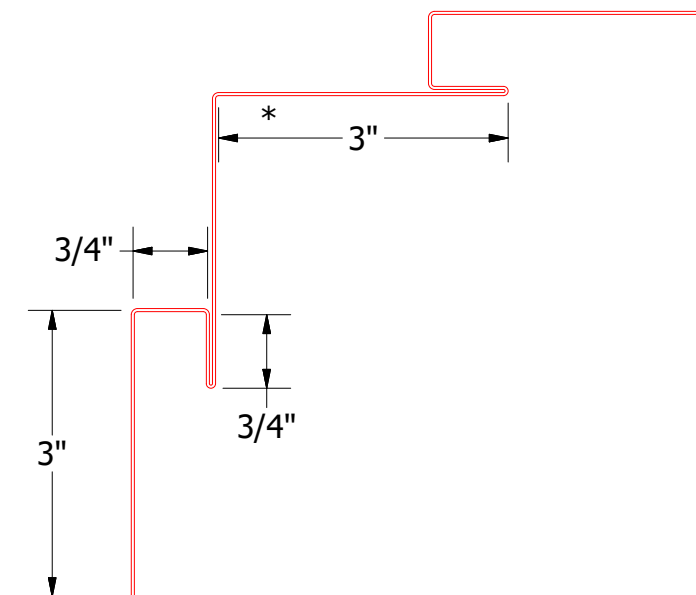
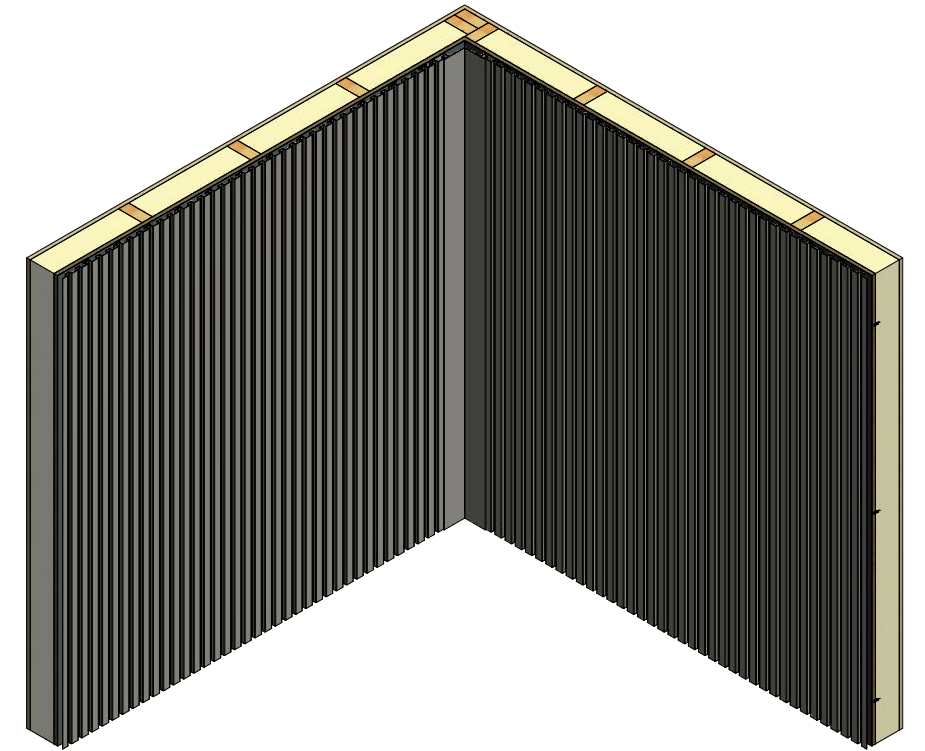
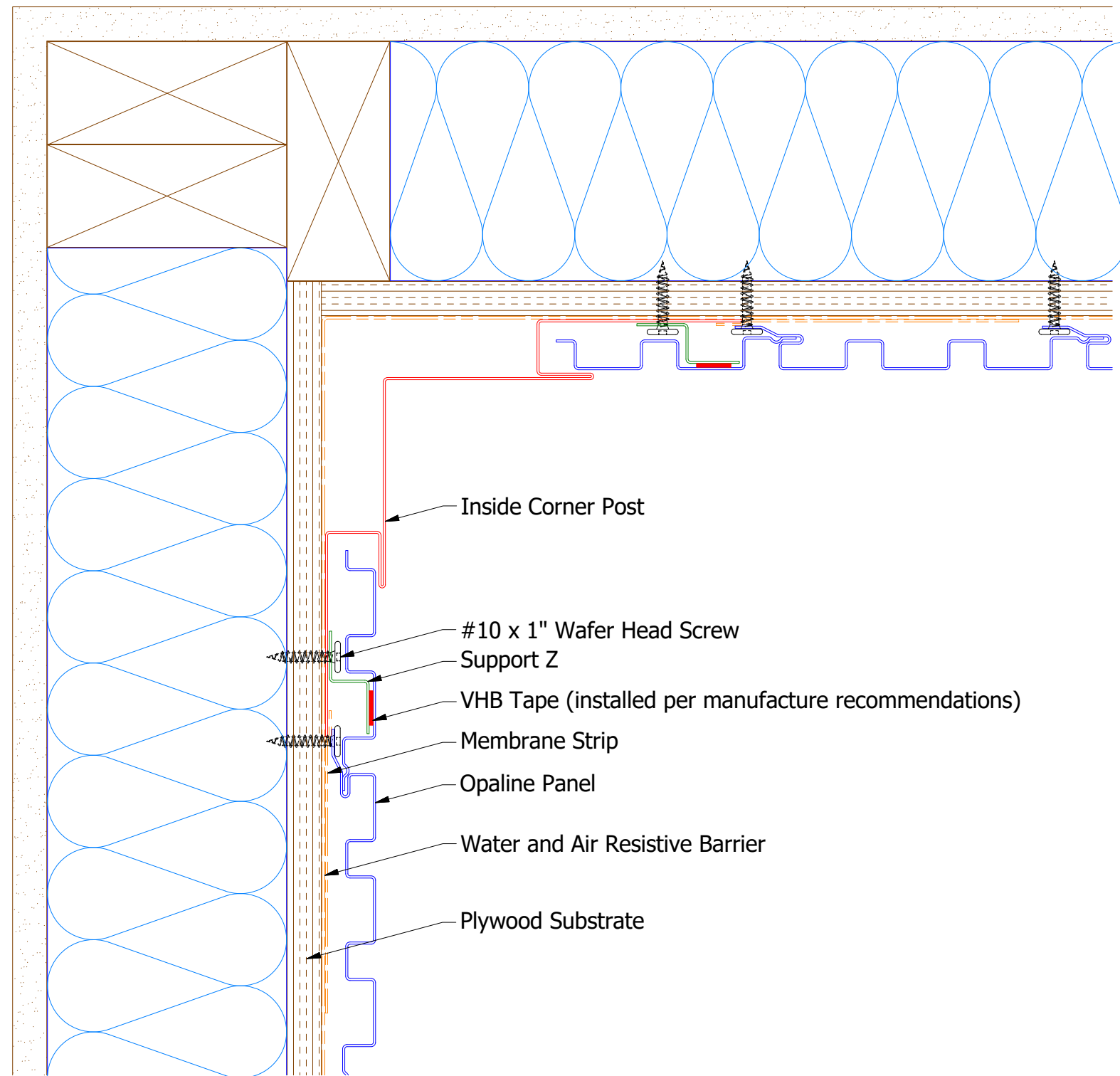
Note: \* denotes color side.  
Note: Stainless Steel Pop Rivets maybe needed along with VHB Tape for longer Panels.



ATAS INTERNATIONAL, INC  
Allentown PA  
610-395-8445  
Mesa AZ  
480-558-7210

TITLE				Opaline Endwall Detail			
DWG. NO.		DR		MBP		DATE	
01		8/27/2021		APP		DAS	
REV. NO.		DATE		BY		APP	
		DESCRIPTION OF REVISION				SH. SIZE	
						SCALE	
						X:X	

## Vertical Panel



OPA681 - Support Z

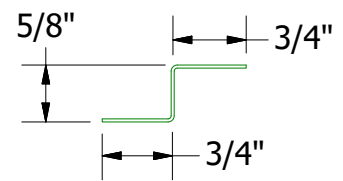
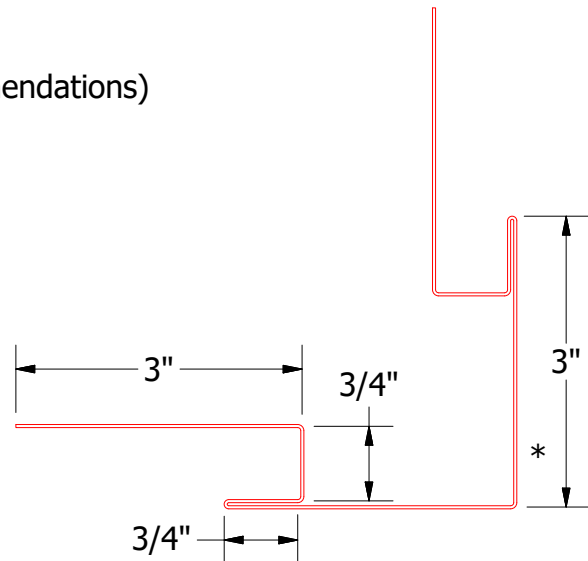
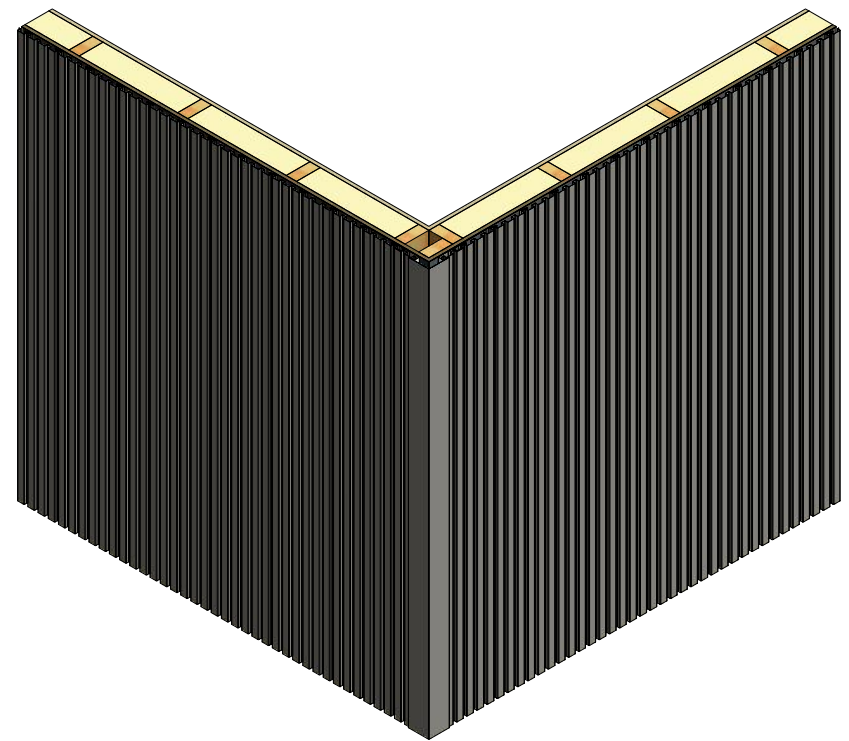
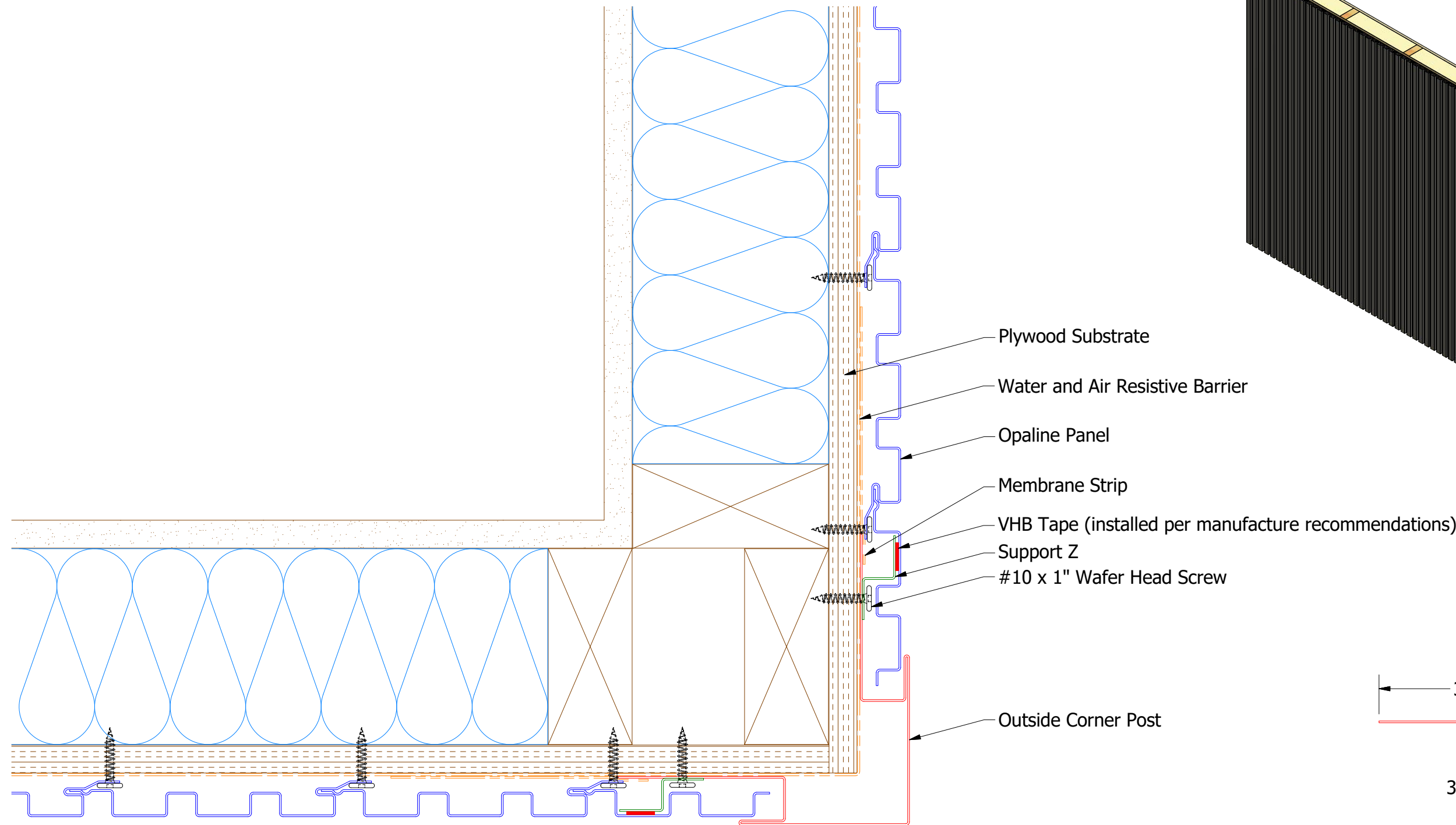
## OPA601 - Inside Corner Post

Note: \* denotes color side.

Note: stainless steel pop rivets maybe needed along with VHB tape for longer panels.

					TITLE Opaline Inside Corner Detail				
					DWG. NO.			DR MBP	DATE 7/6/2016
01	8/30/2021	Changed Pop Rivets to VHB Tape			KRK	MATERIAL			APP DAS DATE 7/28/16
REV. NO.	DATE	DESCRIPTION OF REVISION			BY	APP	SH. SIZE B SCALE X:X		

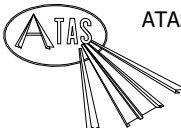
Vertical Panel



OPA602 - Outside Corner Post

OPA681 - Support Z

Note: \* denotes color side.  
Note: stainless steel pop rivets maybe needed along with VHB tape for longer panels.

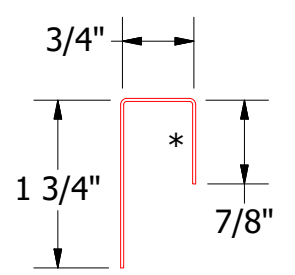
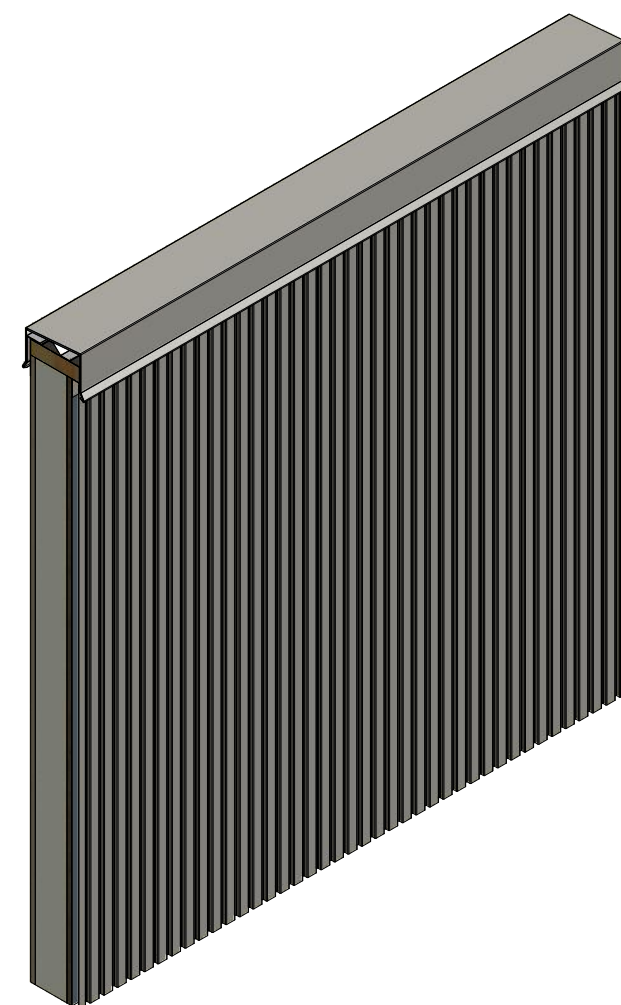
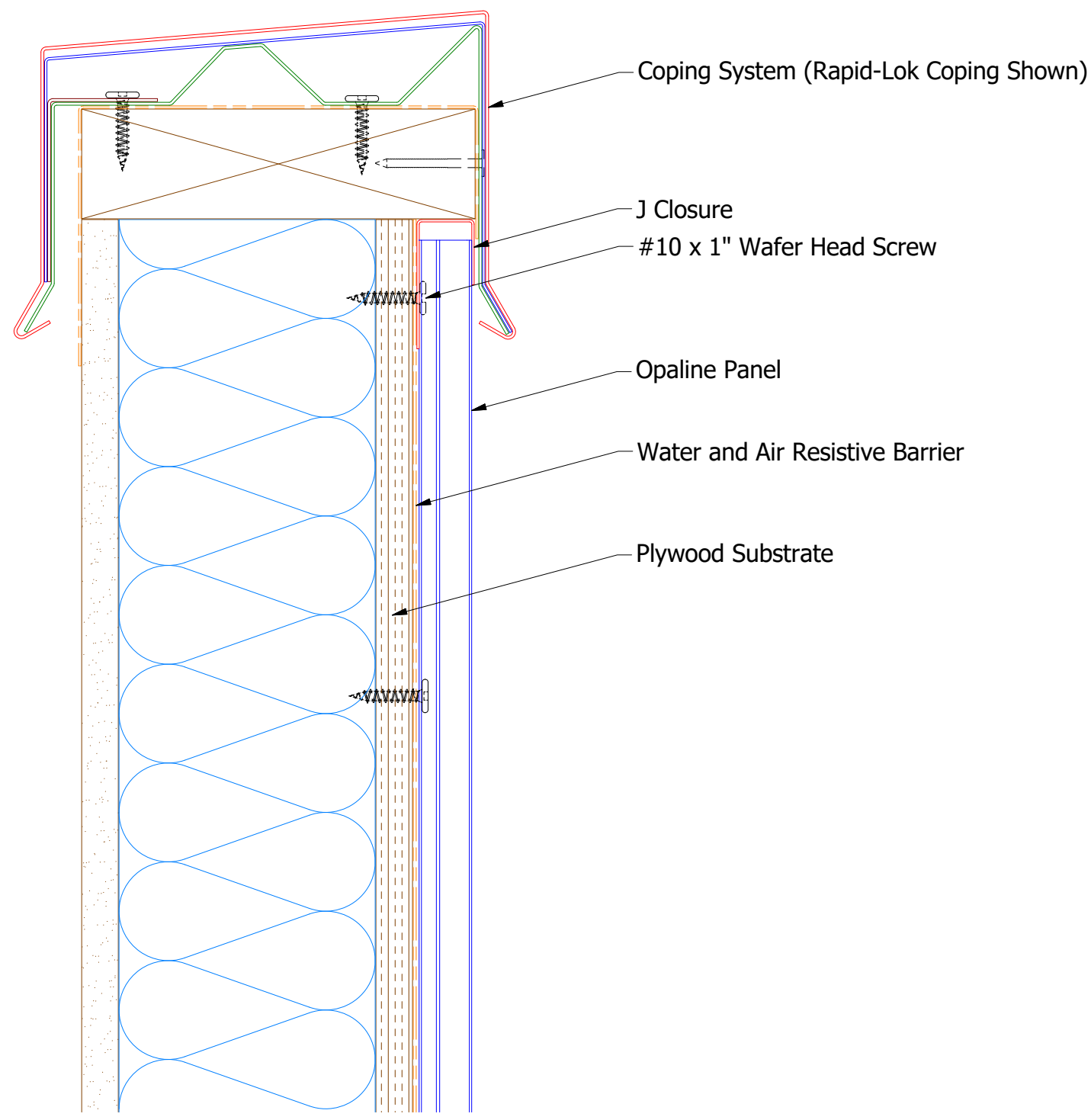


ATAS INTERNATIONAL, INC  
Allentown PA  
610-395-8445  
Mesa AZ  
480-558-7210

TITLE Opaline Outside Corner Detail			
DWG. NO.		DR MBP	DATE 7/6/2016
REV. NO.		APP DAS	DATE 7/28/16
DATE	DESCRIPTION OF REVISION	BY	SCALE X:X

01	8/31/2021	Changed Pop Rivets to VHB Tape	KRK	
REV. NO.	DATE	DESCRIPTION OF REVISION	BY	APP

Vertical Panel



OPA270 - J Closure

Note: \* denotes color side.

REV. NO.	DATE	DESCRIPTION OF REVISION	BY	APP	

TITLE			DWG. NO.		
Opaline Top of Wall Detail			DR MBP		
			APP DAS		
			SH. SIZE B		
			SCALE X:X		

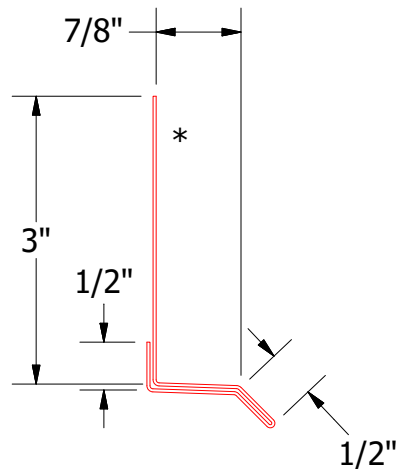
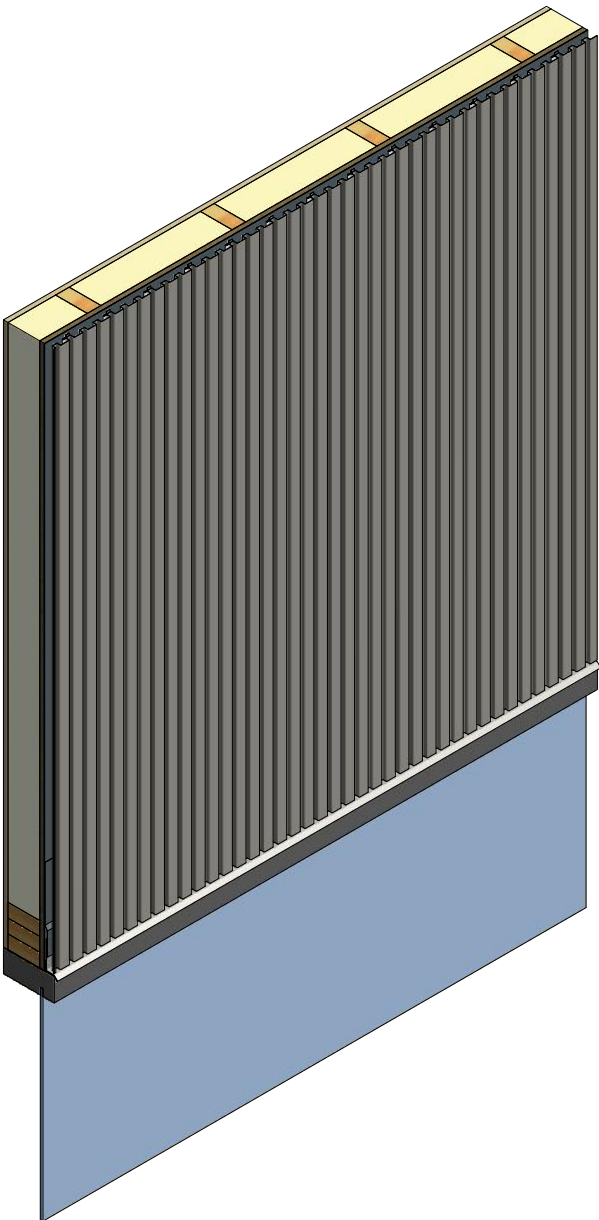
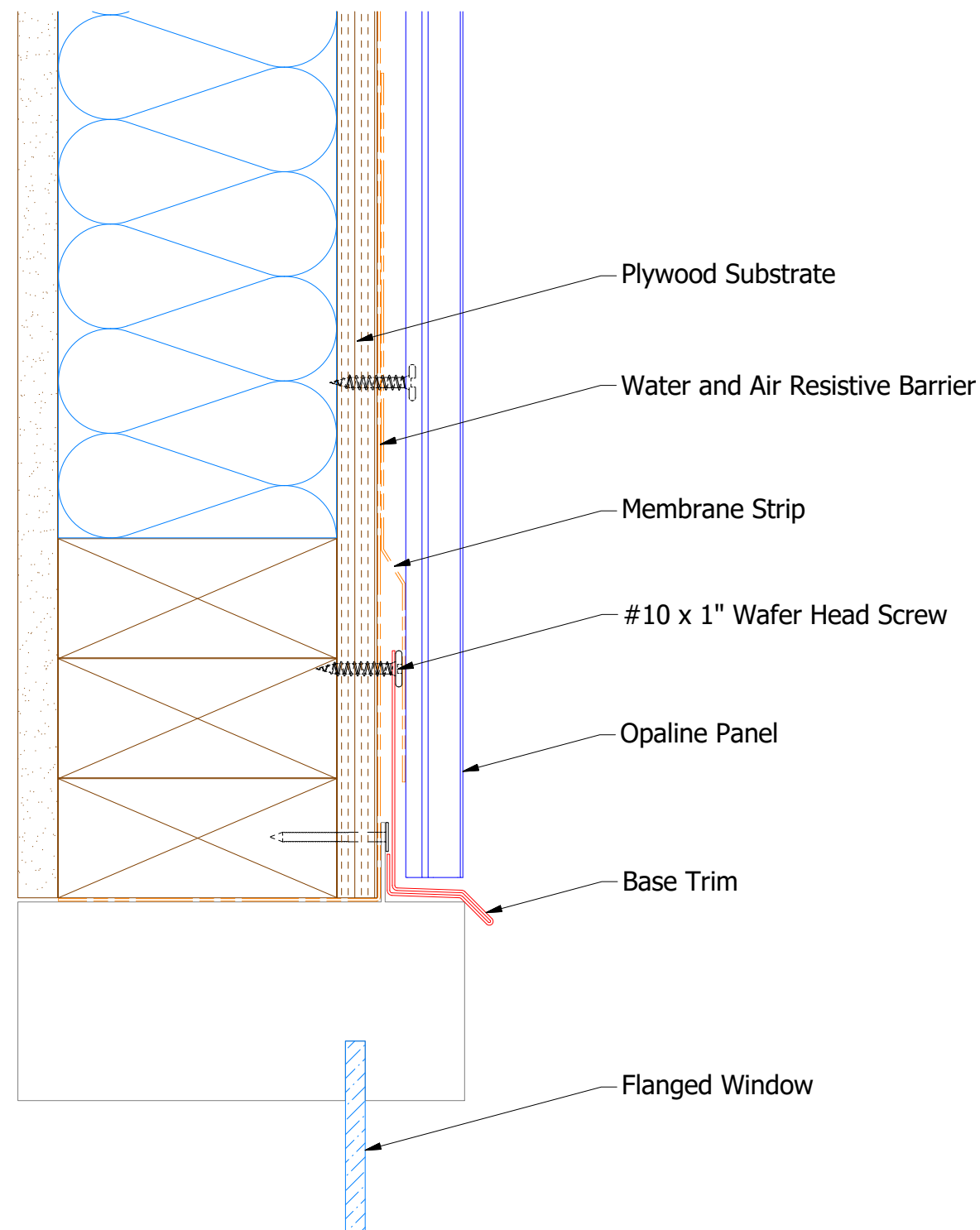
DATE			DATE		
			DATE		



ATAS INTERNATIONAL, INC  
Allentown PA  
610-395-8445  
Mesa AZ  
480-558-7210




Vertical Panel



OPA661 - Base Trim

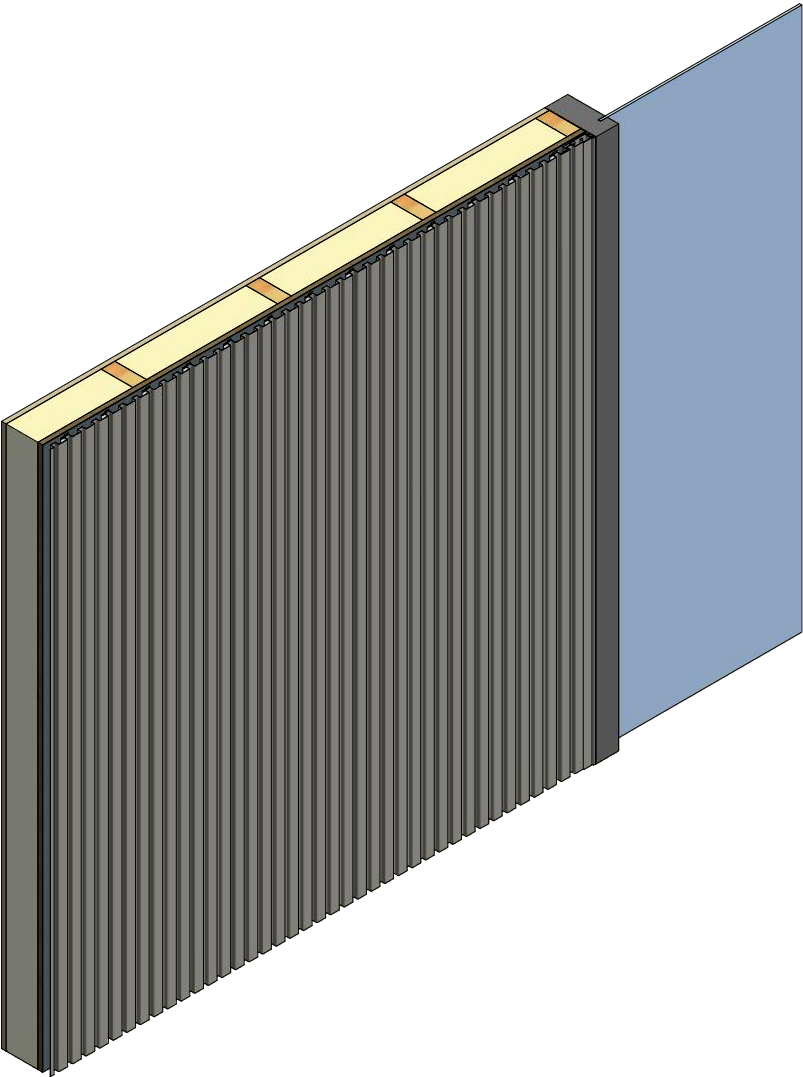
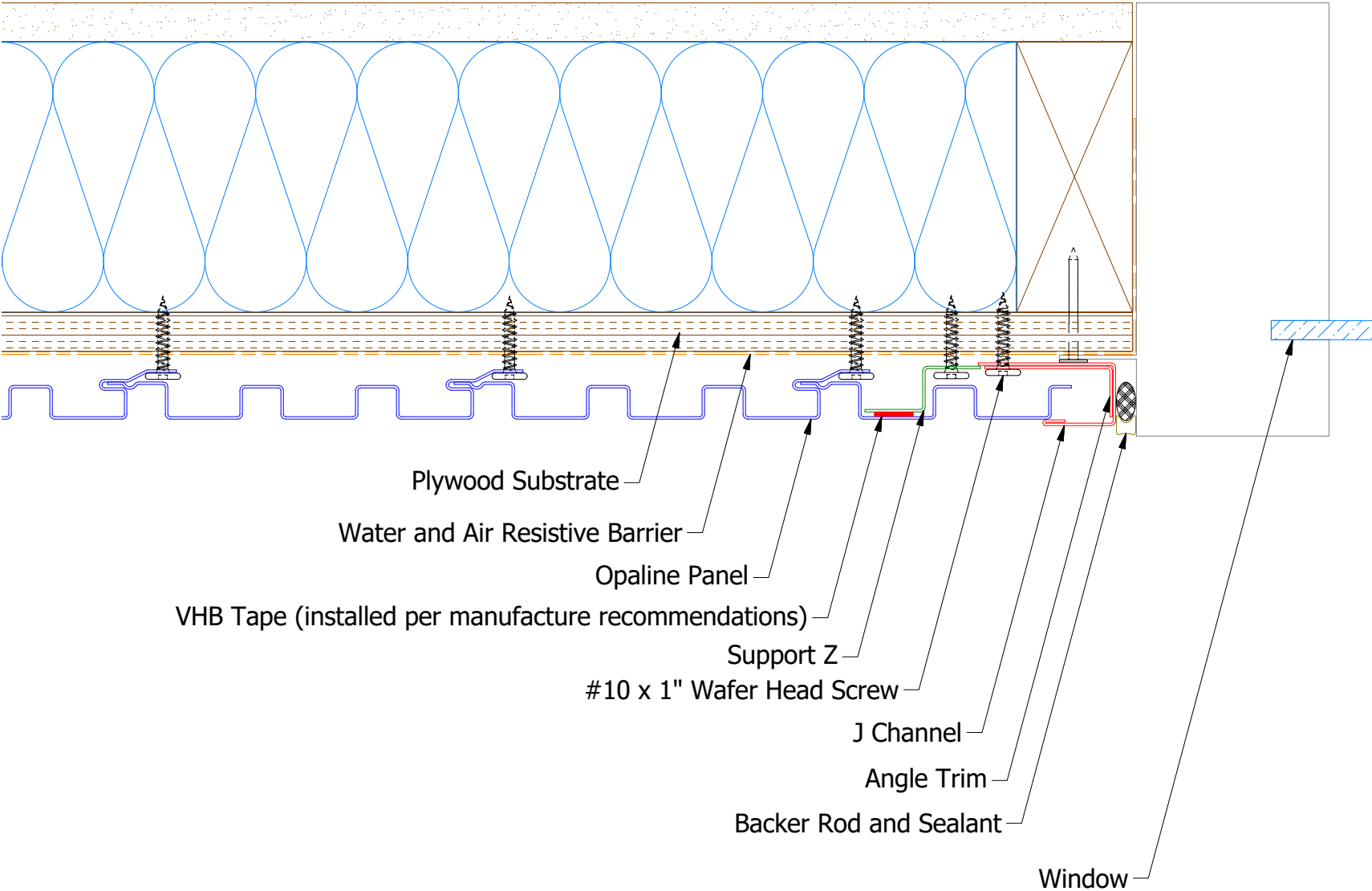
Note: \* denotes color side.



ATAS INTERNATIONAL, INC  
Allentown PA  
610-395-8445  
Mesa AZ  
480-558-7210

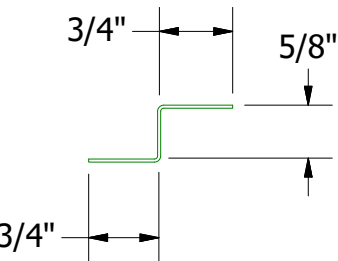
TITLE Opaline Head Window Flange Detail			
DWG. NO.		DR MBP	DATE 7/31/2018
MATERIAL		APP	DATE
REV. NO.	DATE	DESCRIPTION OF REVISION	BY APP
SH. SIZE B		SCALE X:X	

Vertical Panel

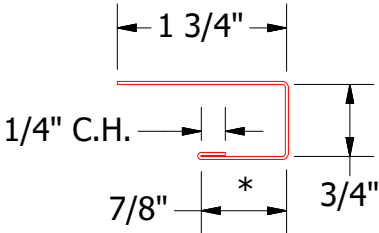
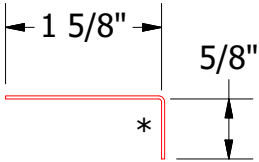


Note: \* denotes color side.  
Note: stainless steel pop rivets maybe needed along with VHB tape for longer panels.

OPA681 - Support Z




OPA680 - Angle Trim



OPA034 - J Channel

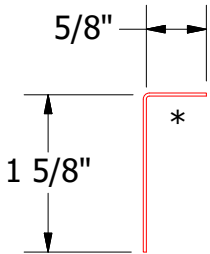
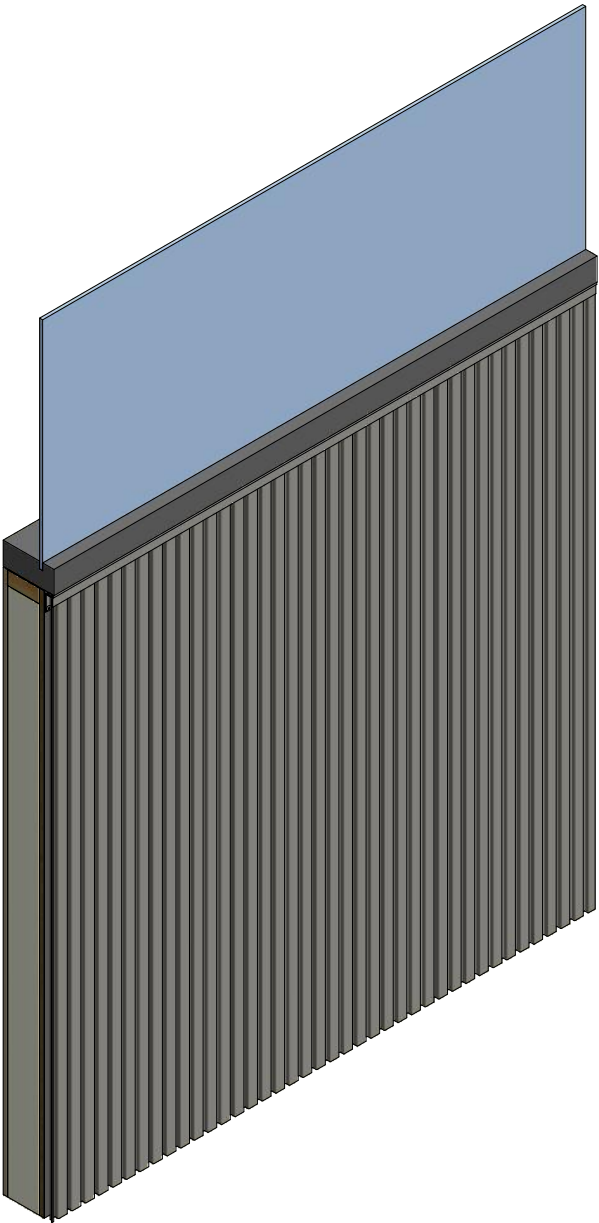
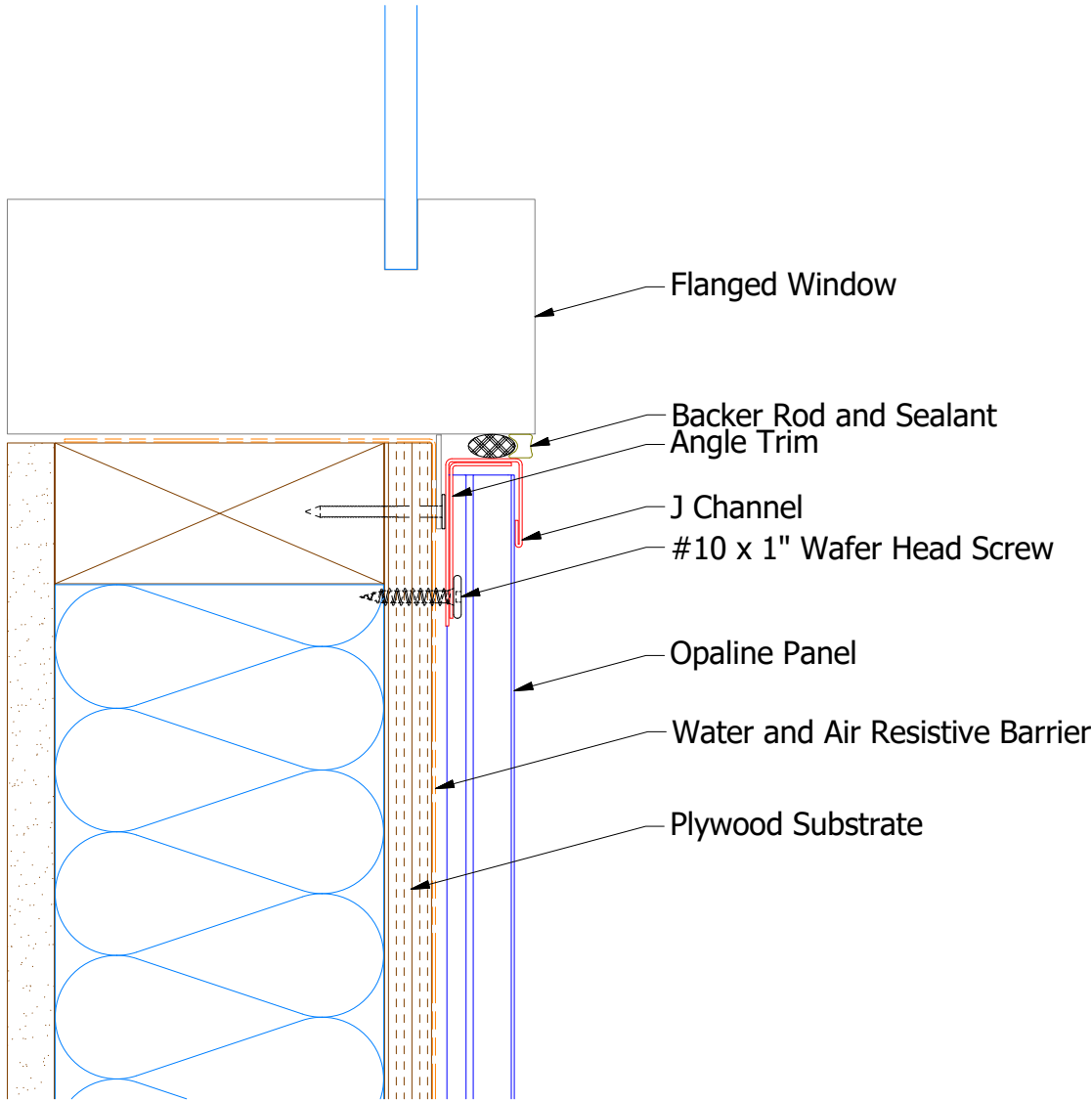
REV. NO.				DATE				DESCRIPTION OF REVISION				BY				APP			
DWG. NO.				DR				DATE				MBP				7/31/2018			
MATERIAL				APP				DATE				SH. SIZE				B			
SCALE				X:X															



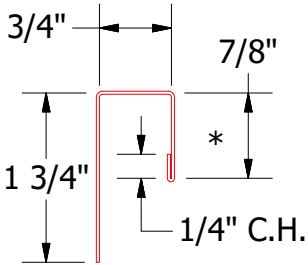
ATAS INTERNATIONAL, INC  
Allentown PA  
610-395-8445  
Mesa AZ  
480-558-7210

TITLE		Opaline Jamb Window Flange Detail	
DWG. NO.		DATE	
MATERIAL		SCALE	
SH. SIZE		X:X	

Vertical Panel



OPA680 - Angle Trim



OPA034 - J Channel

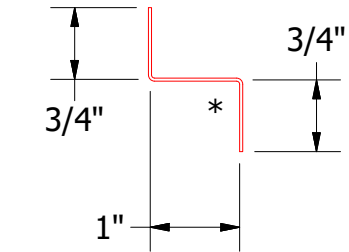
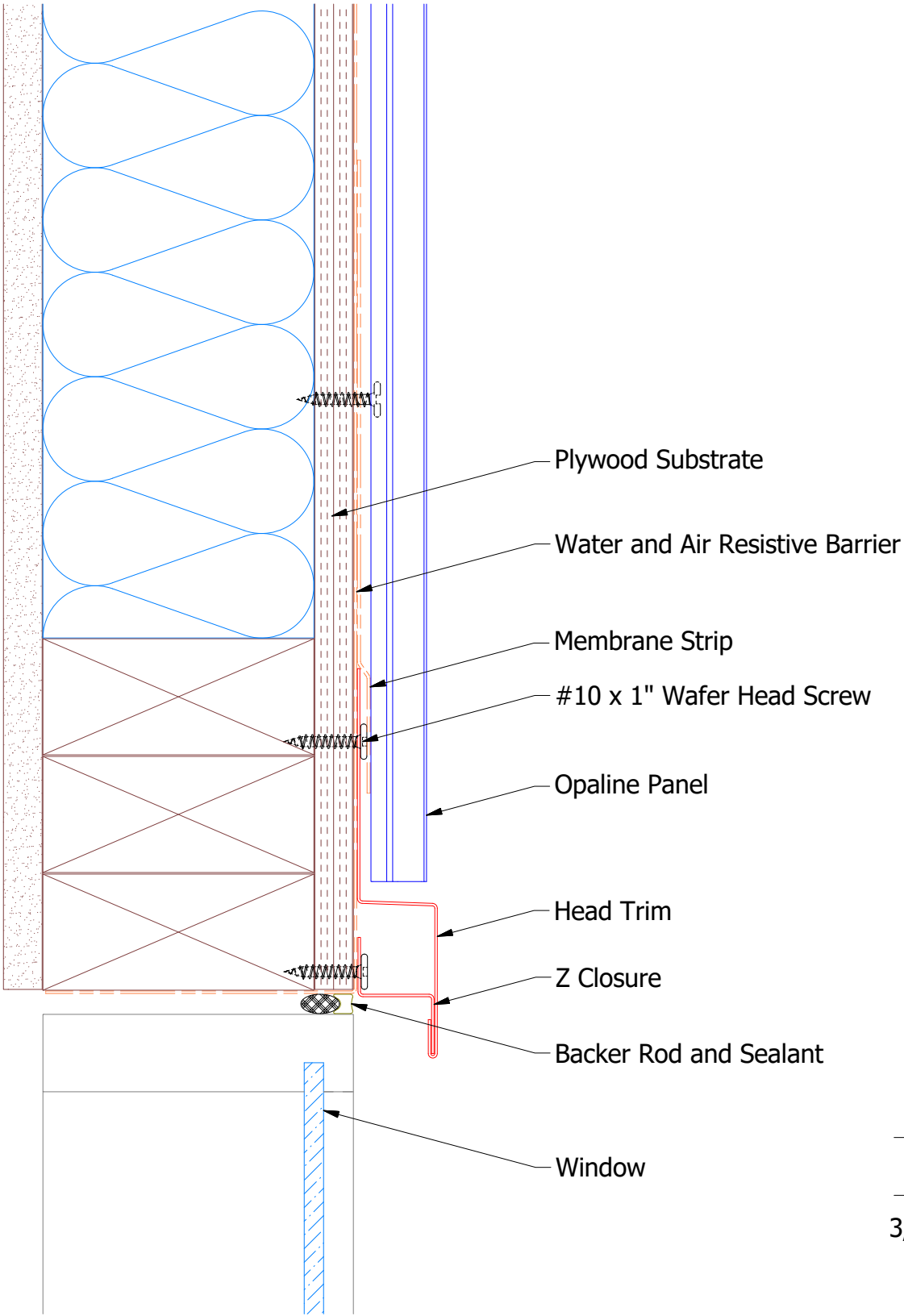
**Note:** \* denotes color side.

				TITLE Opaline Window Sill Flange Detail			
		DWG. NO.		DR MBP		DATE 7/31/2018	
				APP		DATE	
REV. NO.		DATE		DESCRIPTION OF REVISION		BY APP	
				MATERIAL		SH. SIZE B	
						SCALE X:X	

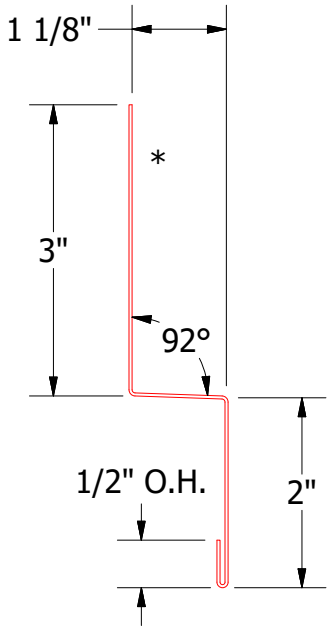


ATAS INTERNATIONAL, INC  
Allentown PA  
610-395-8445  
Mesa AZ  
480-558-7210

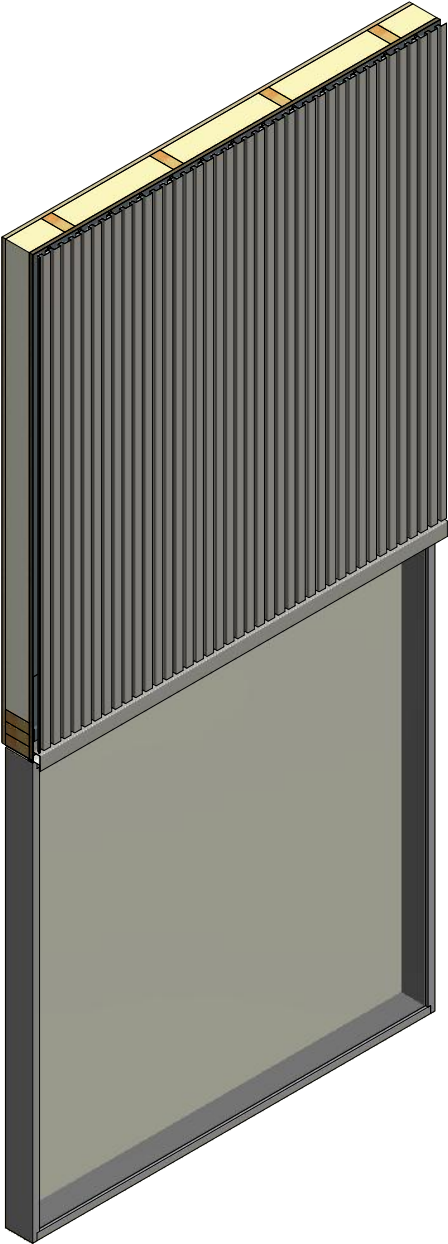
Vertical Panel



OPA681 - Z Closure



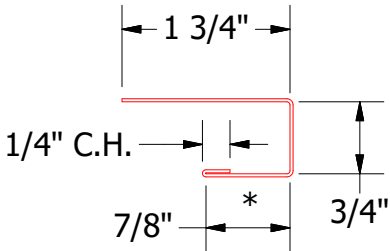
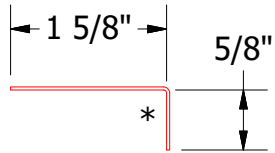
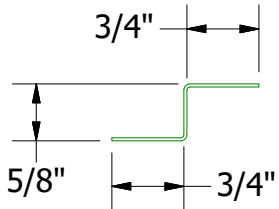
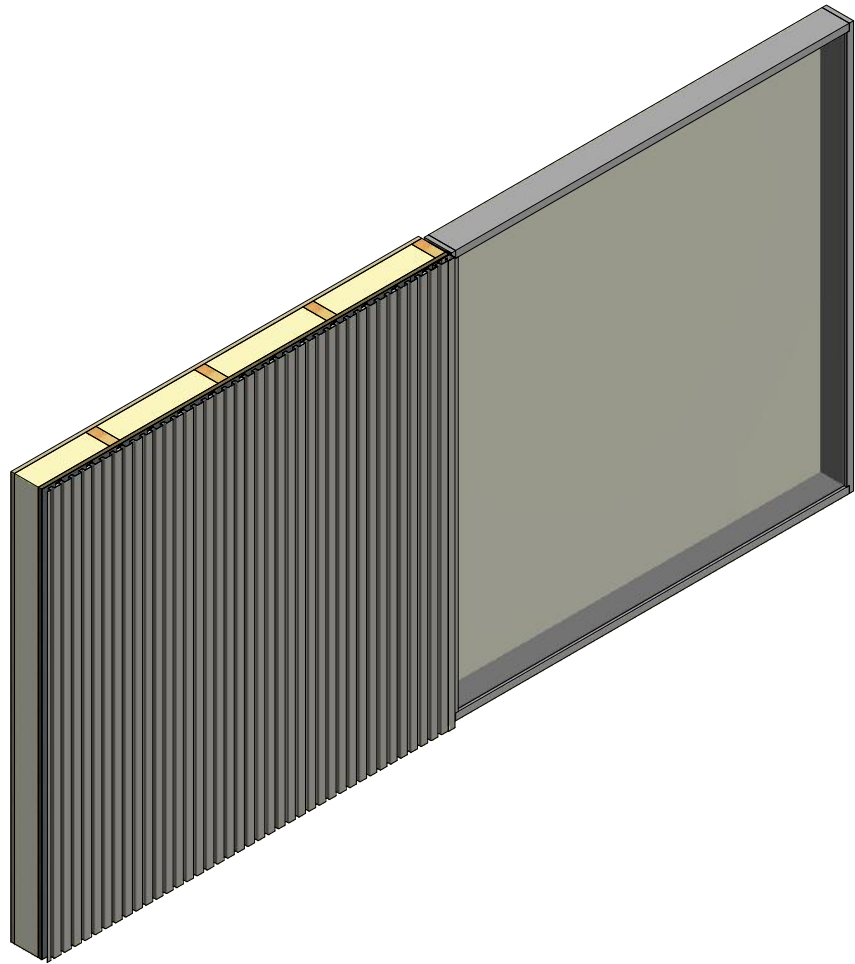
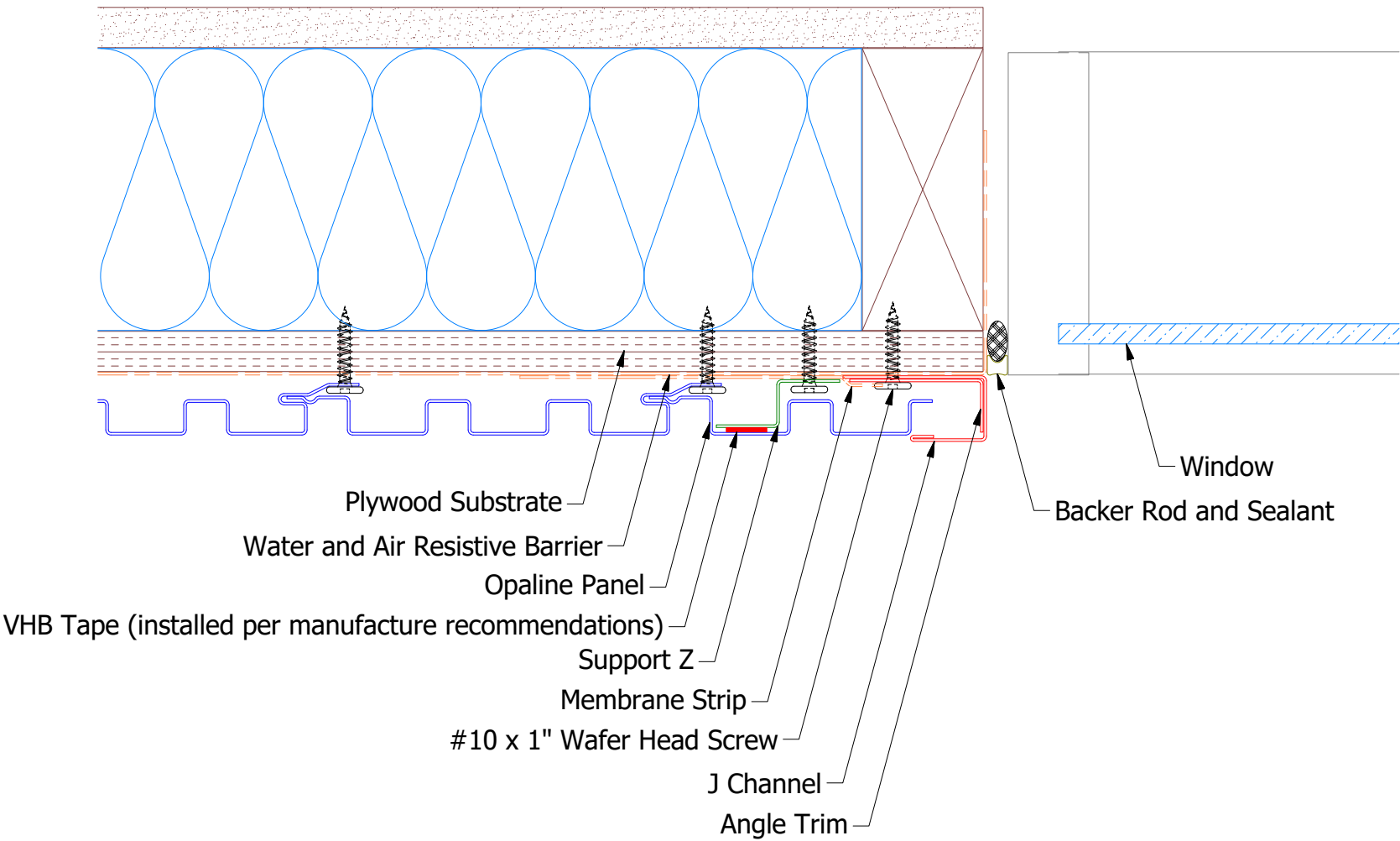
OPA550 - Head Trim



Note: \* denotes color side.

						Opaline Head Existing Window Detail		
						DWG. NO.	DR	DATE
							DMR	12/27/2018
							APP	DATE
						MATERIAL		
REV. NO.	DATE	DESCRIPTION OF REVISION		BY	APP		SH. SIZE	B
							SCALE	X:X

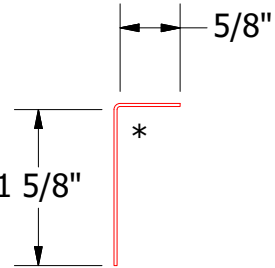
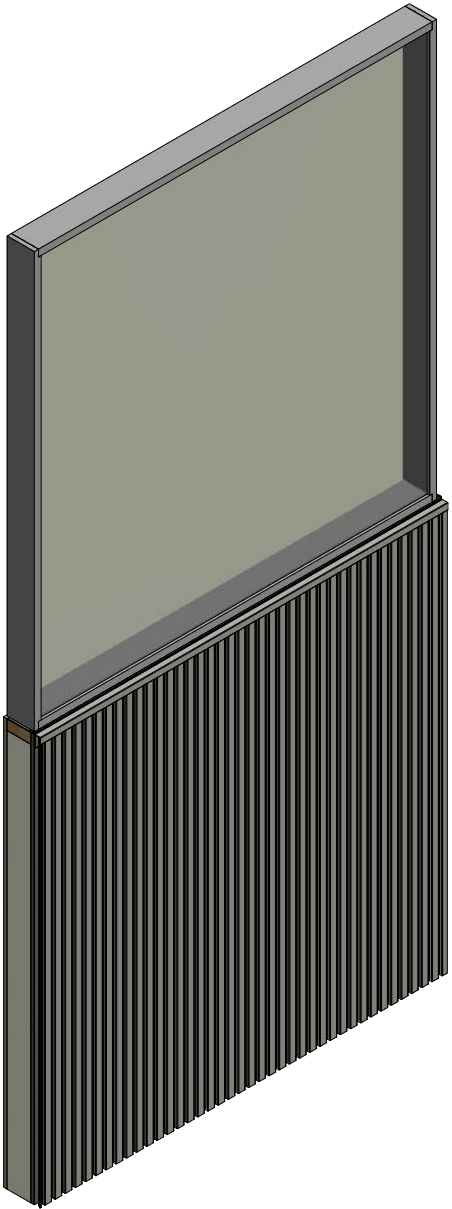
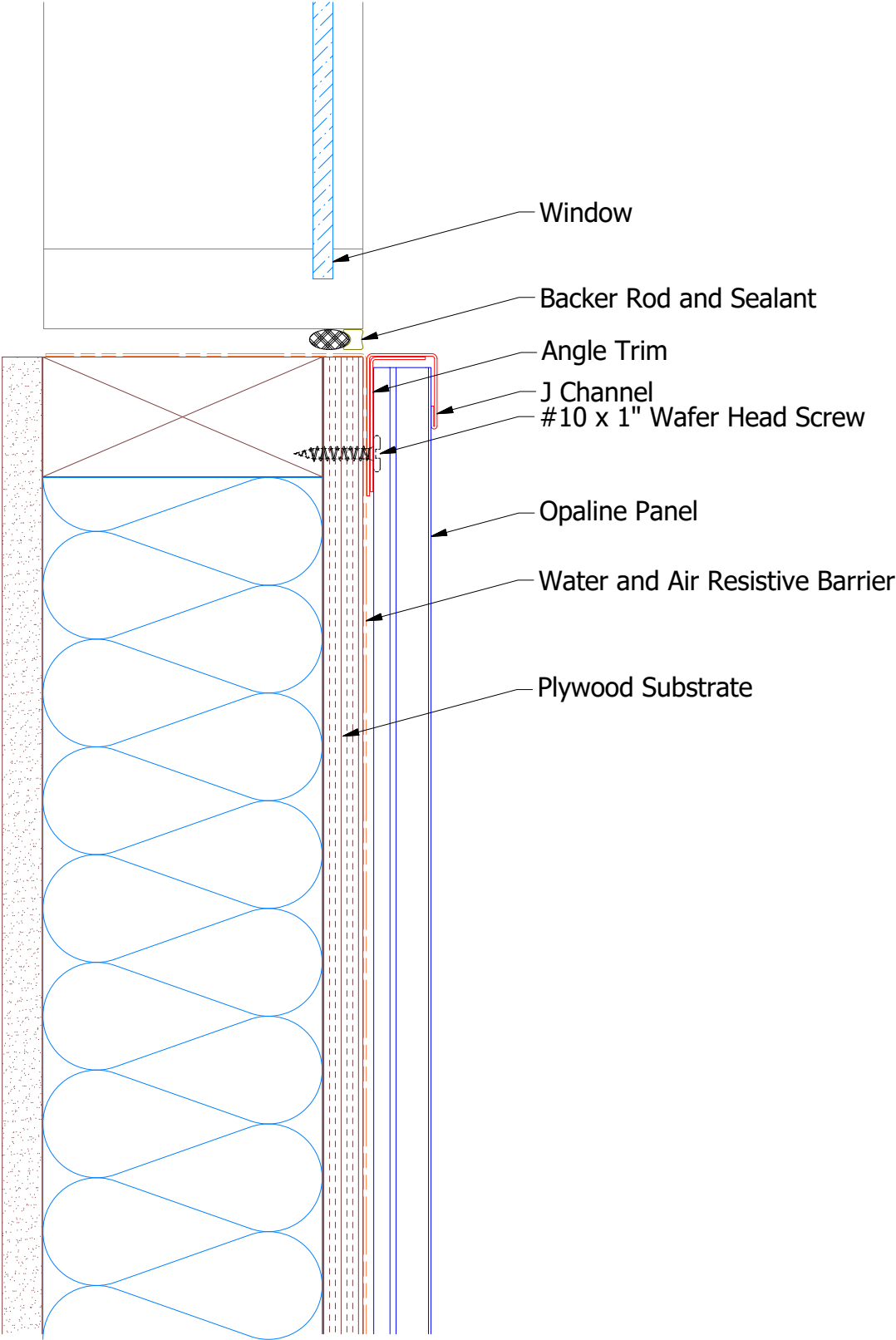
Vertical Panel



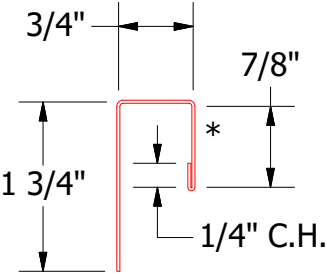
Note: \* denotes color side.  
Note: stainless steel pop rivets maybe needed along with VHB tape for longer panels.

								Opaline Existing Jamb Window Detail	
						DWG. NO.		DR	DATE
								DMR	12/31/2018
01	8/30/2021	Changed Pop Rivets to VHB Tape		KRK		MATERIAL		APP	DATE
REV. NO.	DATE	DESCRIPTION OF REVISION		BY	APP			SH. SIZE	SCALE
								B	X:X

Vertical Panel



OPA680 - Angle Trim



OPA034 - J Channel

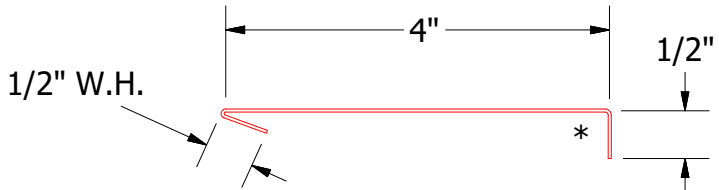
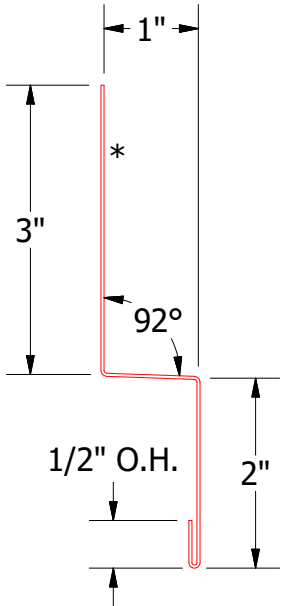
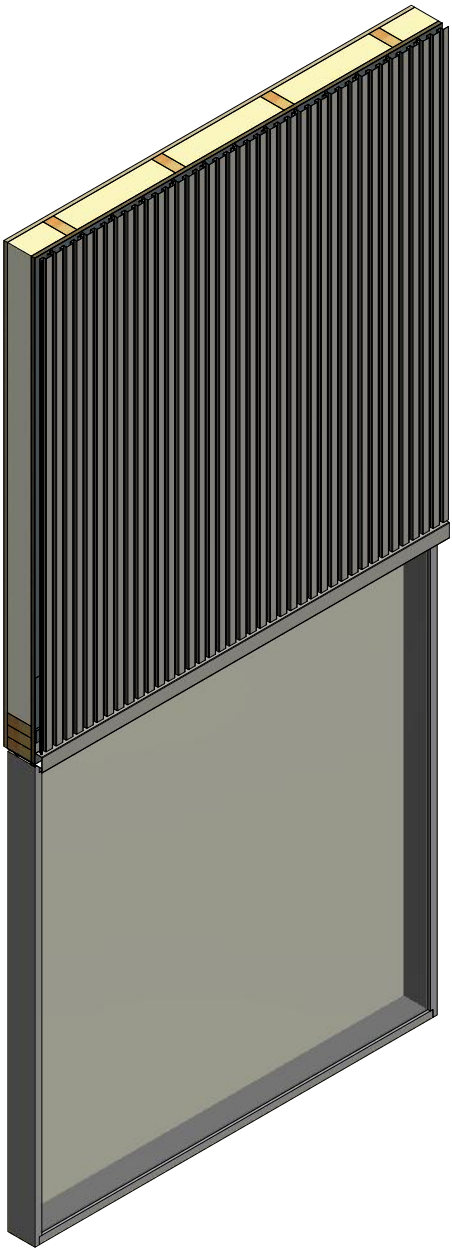
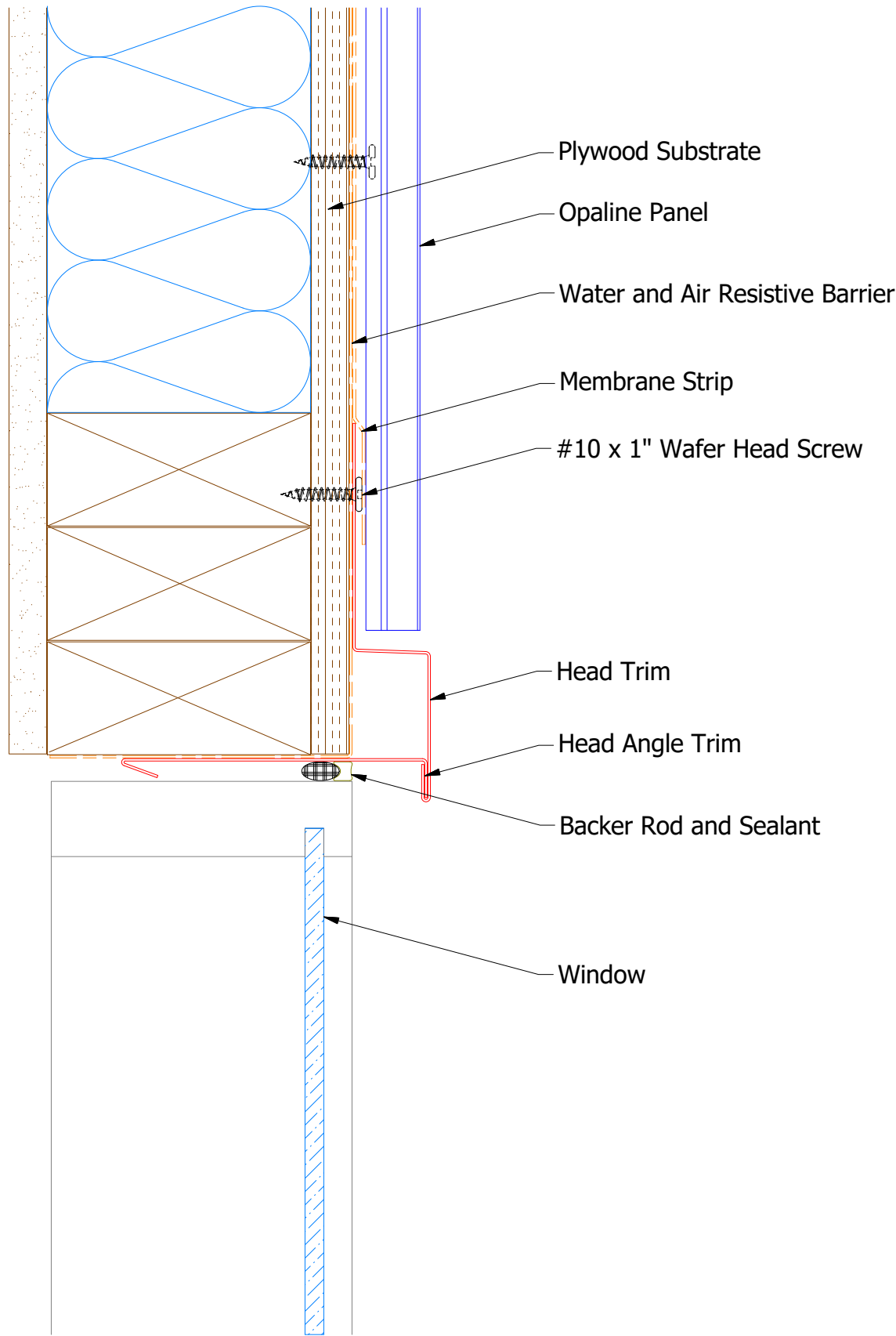
Note: \* denotes color side.

				TITLE Opaline Existing Window Sill Detail		
		DWG. NO.		DR	DMR	DATE 12/31/2018
				APP		DATE
REV. NO.	DATE	DESCRIPTION OF REVISION	BY	APP	MATERIAL	SH. SIZE B
					SCALE	X:X



ATAS INTERNATIONAL, INC  
Allentown PA  
610-395-8445  
Mesa AZ  
480-558-7210

Vertical Panel



Note: \* denotes color side.

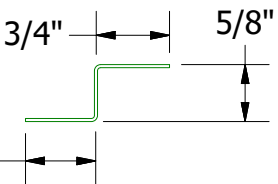
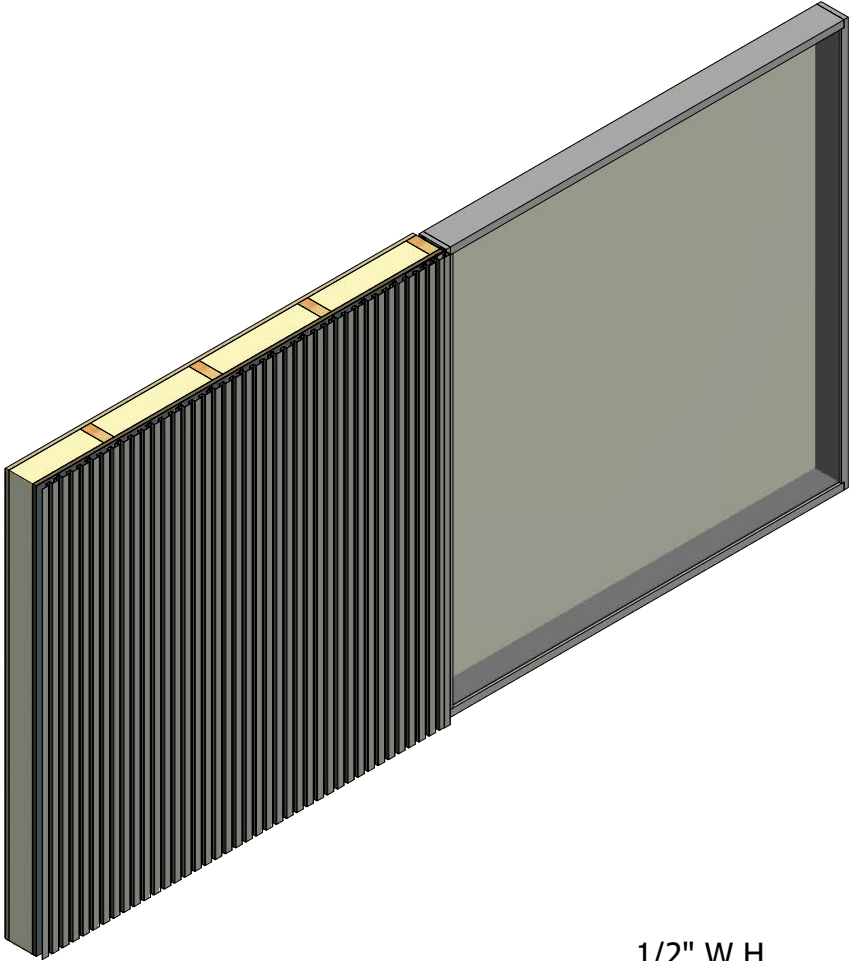
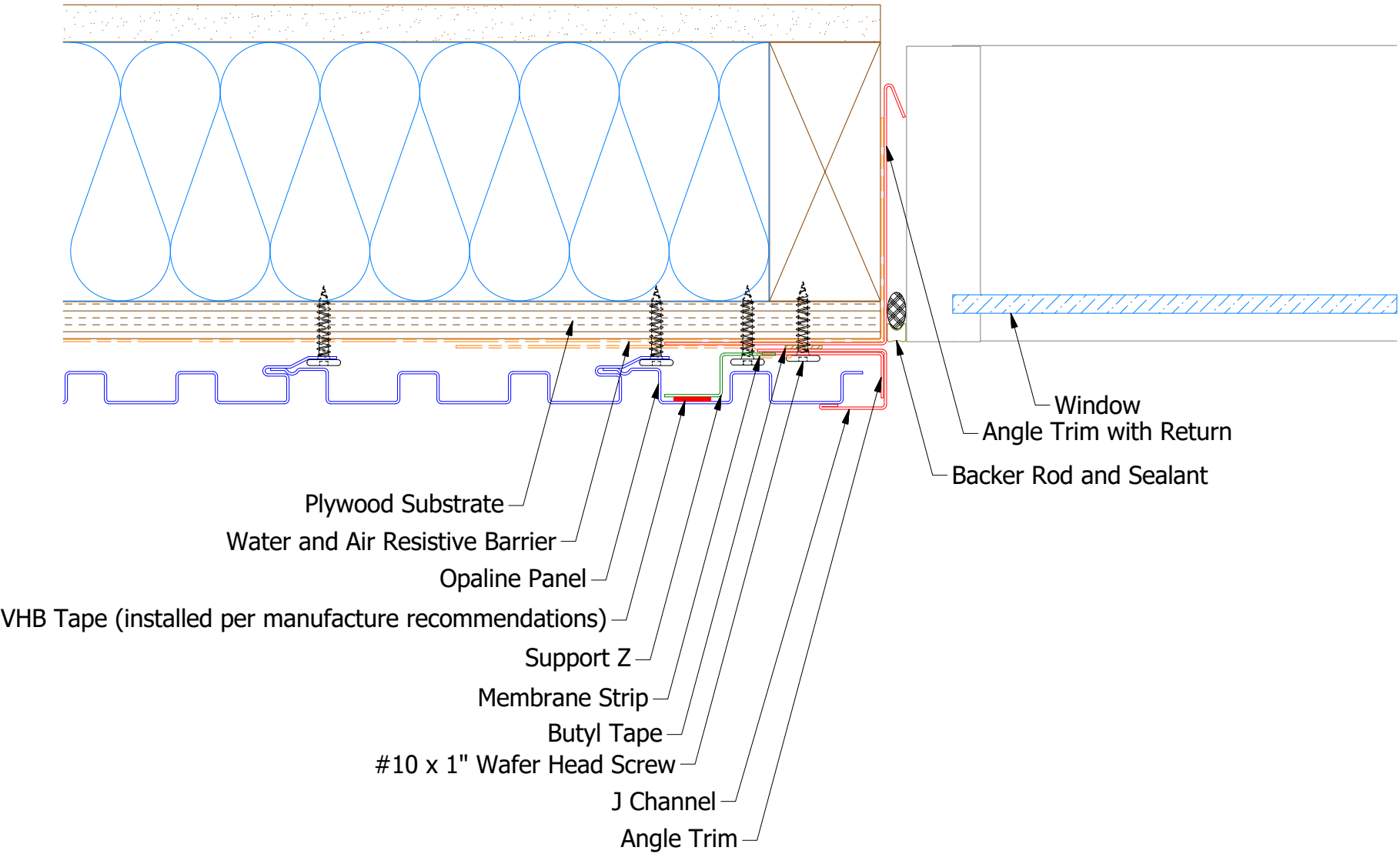
REV. NO.		DATE	DESCRIPTION OF REVISION	BY	APP
DWG. NO.		DR	MBP	DATE	7/6/2016
MATERIAL		APP	DAS	DATE	7/28/16
SH. SIZE		B	SCALE	X:X	



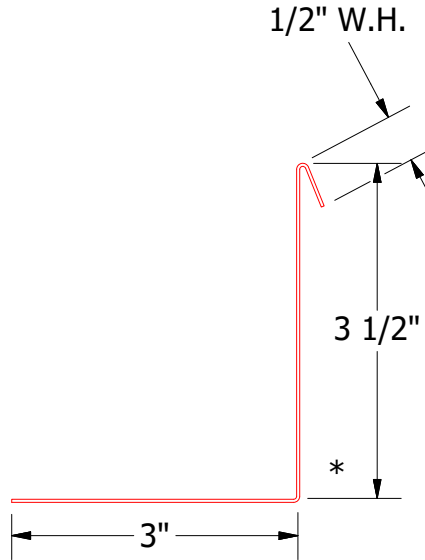
ATAS INTERNATIONAL, INC  
Allentown PA  
610-395-8445  
Mesa AZ  
480-558-7210

TITLE  
Opaline Head Detail

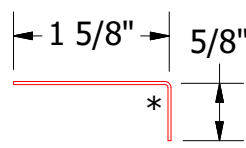
Vertical Panel



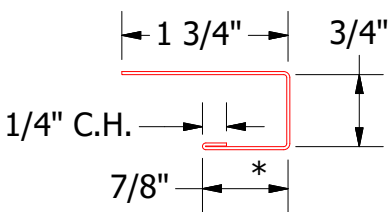
OPA681 - Support Z



OPA683 - Angle Trim With Return



OPA680 - Angle Trim



OPA034 - J Channel

Note: \* denotes color side.  
Note: stainless steel pop rivets maybe needed along with VHB tape for longer panels.

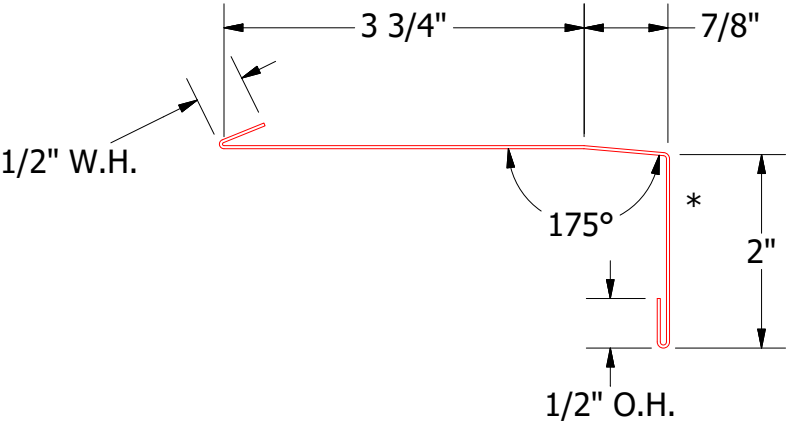
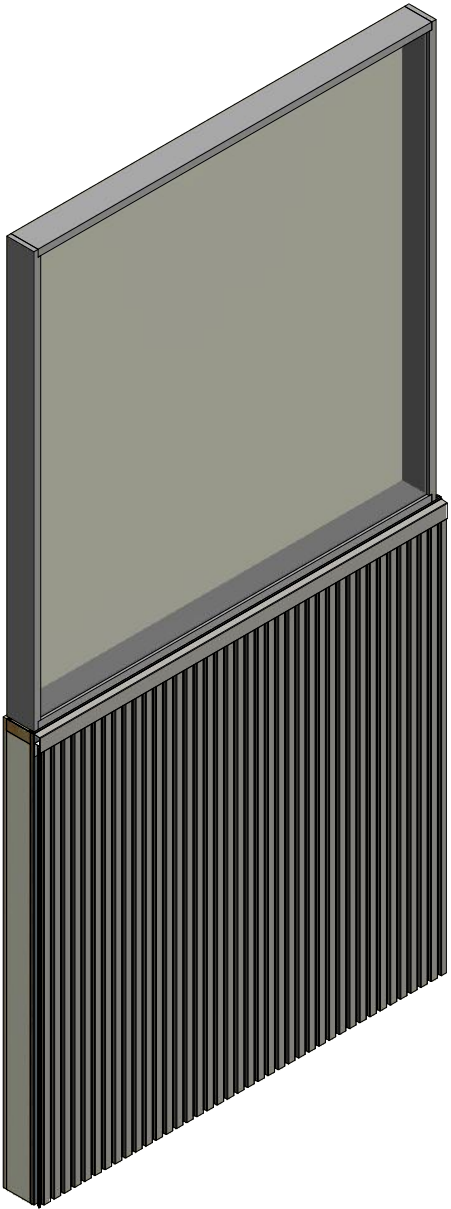
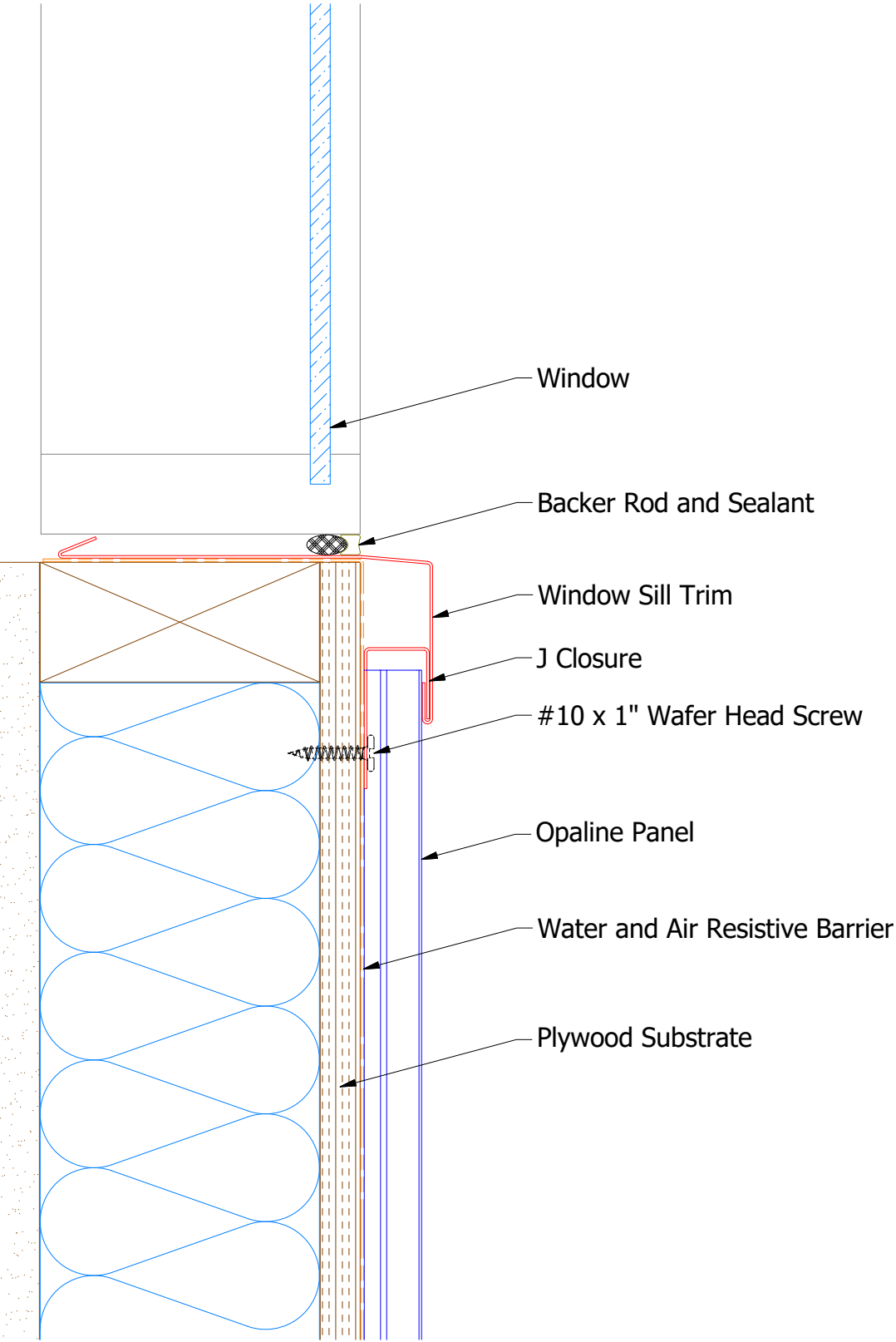
TITLE				Opaline Jamb Detail			
DWG. NO.		DR		DATE		MBP	
01		8/30/2021		7/6/2016		APP	
REV. NO.		DATE		DESCRIPTION OF REVISION		BY	
01		8/30/2021		Changed Pop Rivets to VHB Tape		KPK	
MATERIAL		SH. SIZE		SCALE		X:X	
		B					



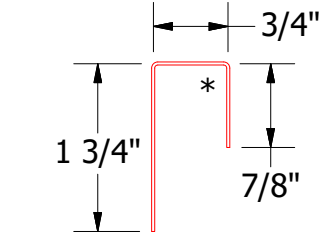
ATAS INTERNATIONAL, INC  
Allentown PA  
610-395-8445  
Mesa AZ  
480-558-7210



Vertical Panel



OPA670 - Window Sill Trim



OPA270 - J Closure

Note: \* denotes color side.

						TITLE		Opaline Window Sill Detail	
						DWG. NO.		DR MBP	DATE 7/7/2016
								APP DAS	DATE 7/28/16
REV. NO.		DATE		DESCRIPTION OF REVISION		BY		MATERIAL	SH. SIZE B
									SCALE X:X



ATAS INTERNATIONAL, INC  
Allentown PA  
610-395-8445  
Mesa AZ  
480-558-7210