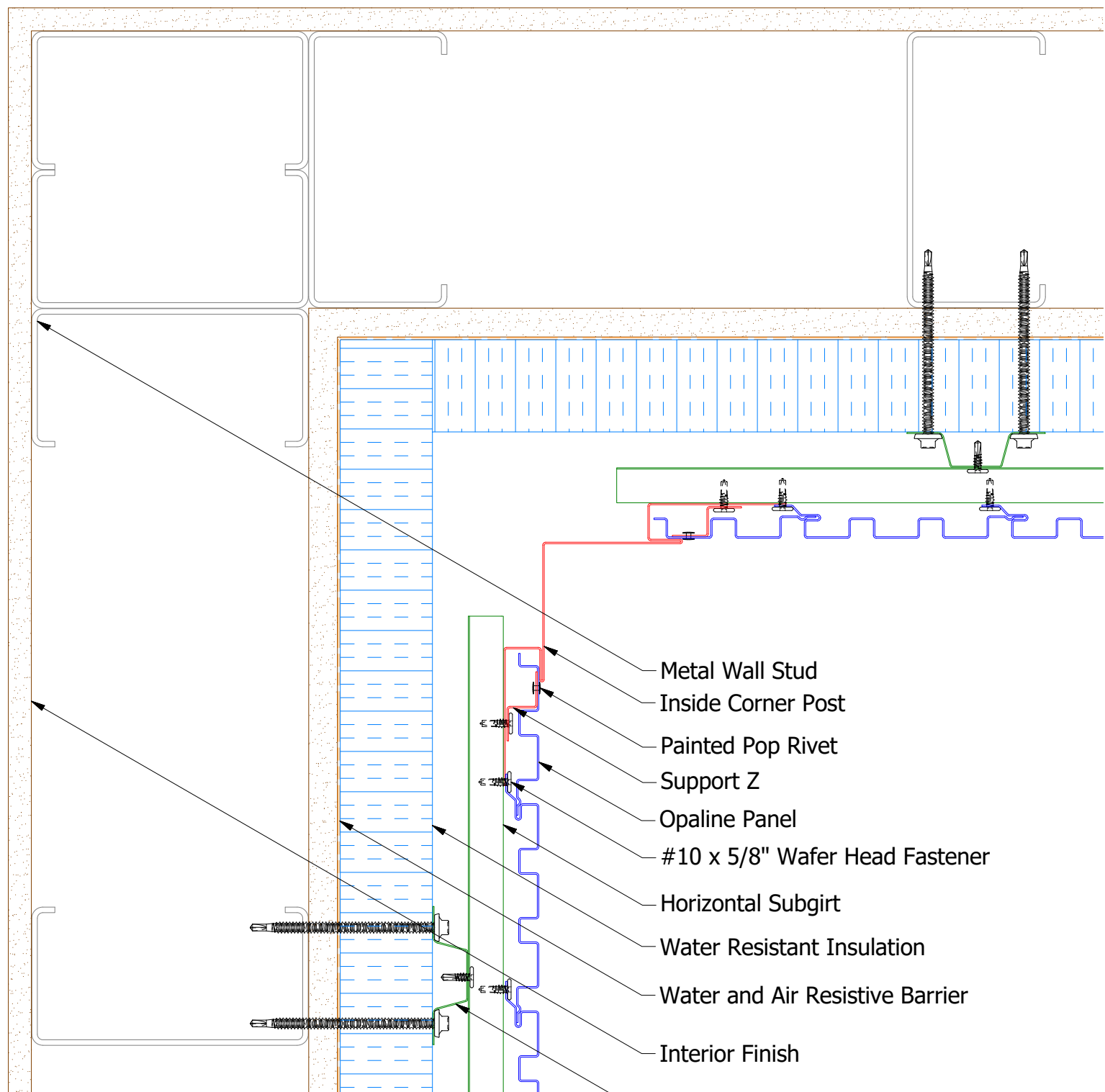
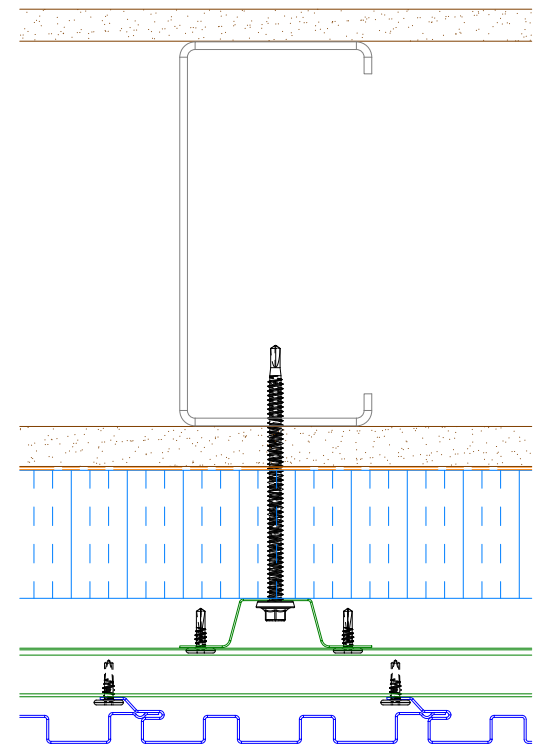


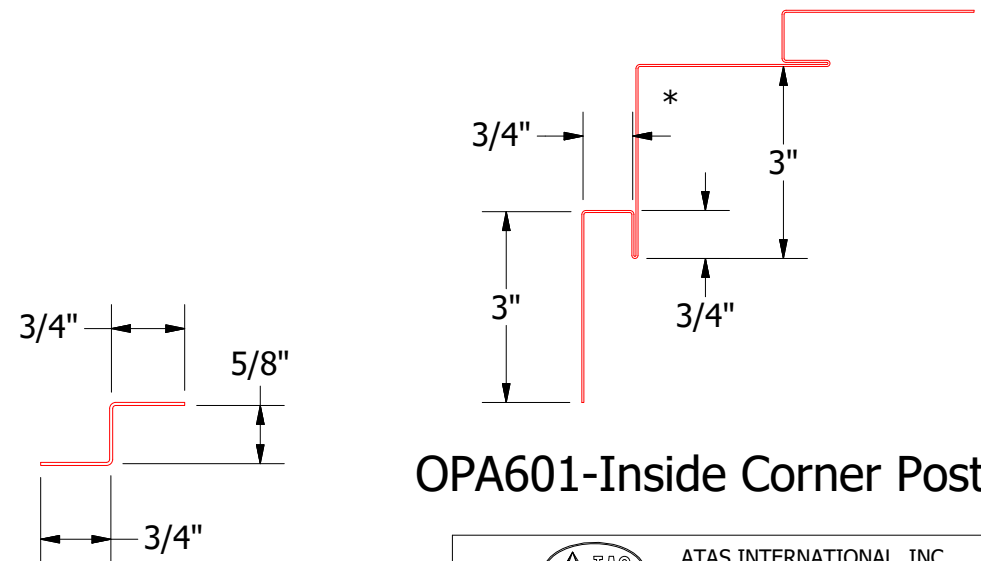
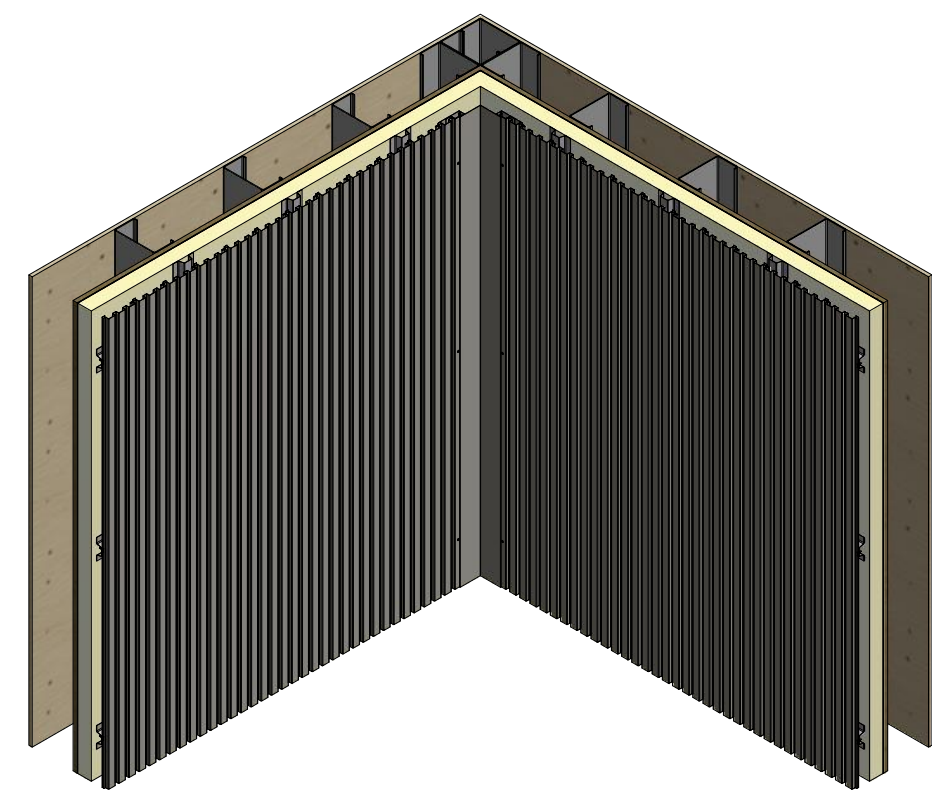
# Vertical Panel



- Metal Wall Stud
- Inside Corner Post
- Painted Pop Rivet
- Support Z
- Opaline Panel
- #10 x 5/8" Wafer Head Fastener
- Horizontal Subgirt
- Water Resistant Insulation
- Water and Air Resistive Barrier
- Interior Finish
- Vertical Subgirt



Alternate Subgirt Orientation



OPA681-Support Z

OPA601-Inside Corner Post

**ATAS** ATAS INTERNATIONAL, INC  
 Allentown PA  
 610-395-8445  
 Mesa AZ  
 480-558-7210

TITLE Opaline Panel Open Inside Corner Detail

REV. NO.	DATE	DESCRIPTION OF REVISION	BY	APP	DWG. NO.	DR	DMR	DATE	10/7/2016
						APP		DATE	
					MATERIAL	SH. SIZE	B	SCALE	X:X