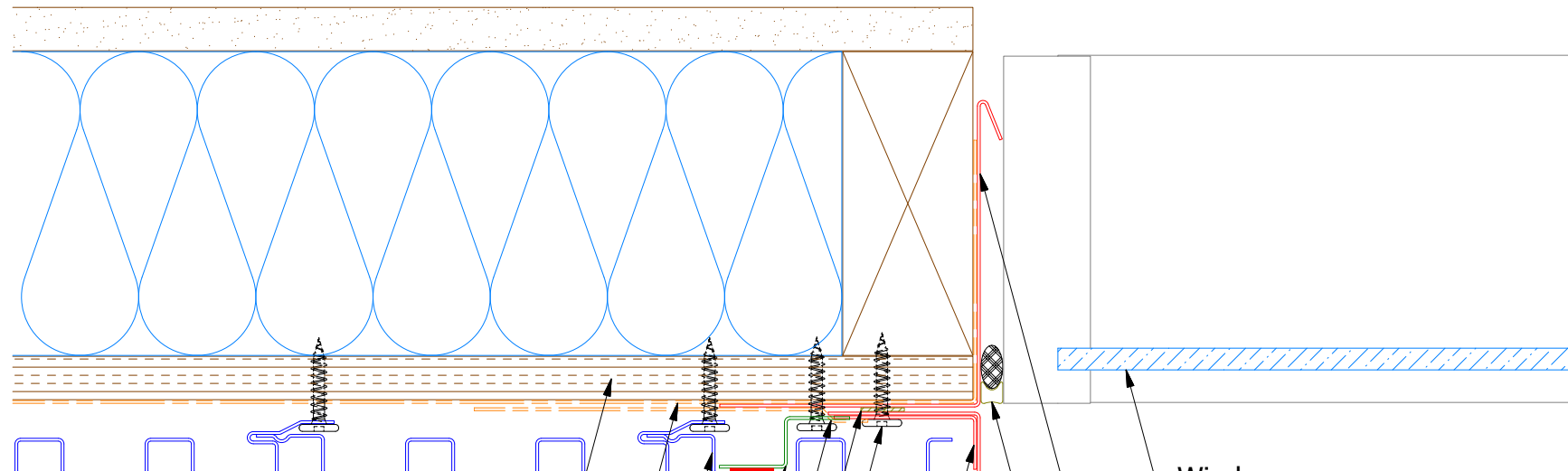
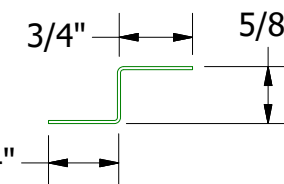
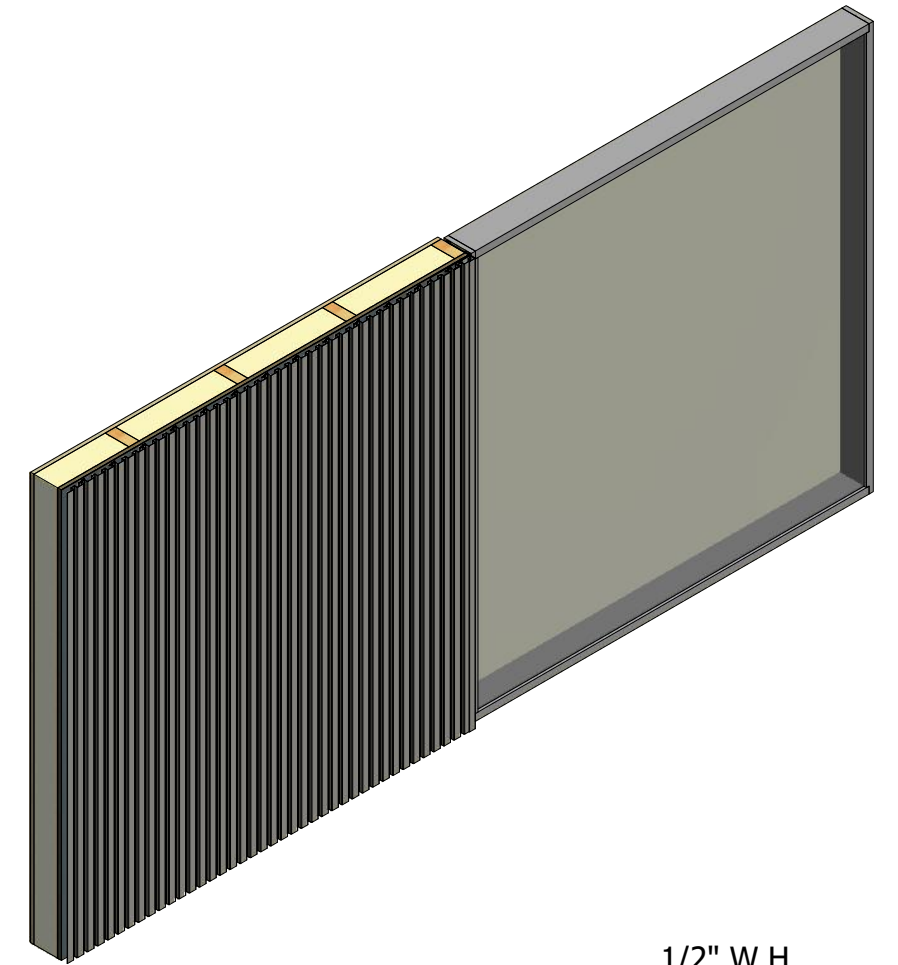


Vertical Panel

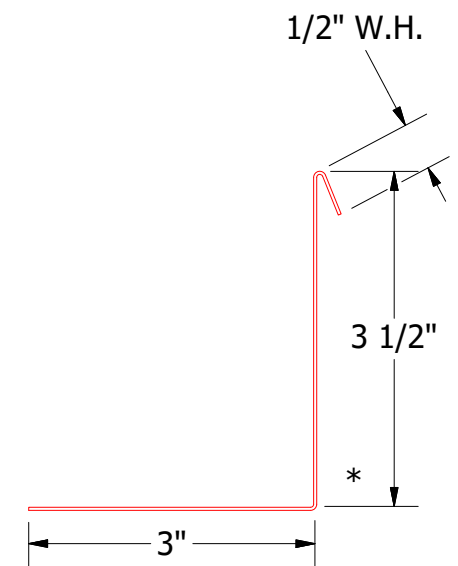


- Plywood Substrate
- Water and Air Resistive Barrier
- Opaline Panel
- VHB Tape (installed per manufacture recommendations)
- Support Z
- Membrane Strip
- Butyl Tape
- #10 x 1" Wafer Head Screw
- J Channel
- Angle Trim

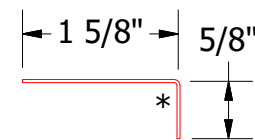
- Window
- Angle Trim with Return
- Backer Rod and Sealant



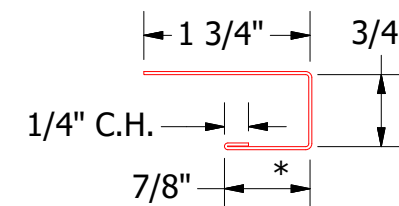
OPA681 - Support Z



OPA683 - Angle Trim With Return

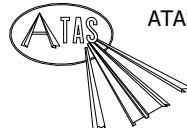


OPA680 - Angle Trim



OPA034 - J Channel

Note: * denotes color side.
 Note: stainless steel pop rivets maybe needed along with VHB tape for longer panels.

 ATAS INTERNATIONAL, INC Allentown PA 610-395-8445 Mesa AZ 480-558-7210		TITLE	
		Opaline Jamb Detail	
DWG. NO.	DR	DATE	DATE
01	MBP	8/30/2021	7/6/2016
REV. NO.	APP	DESCRIPTION OF REVISION	DATE
	DAS	Changed Pop Rivets to VHB Tape	7/28/16
	SH. SIZE	BY	SCALE
	B	KRK	X:X

REV. NO.	DATE	DESCRIPTION OF REVISION	BY	APP
01	8/30/2021	Changed Pop Rivets to VHB Tape	KRK	