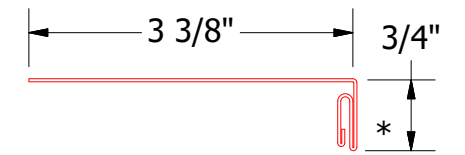
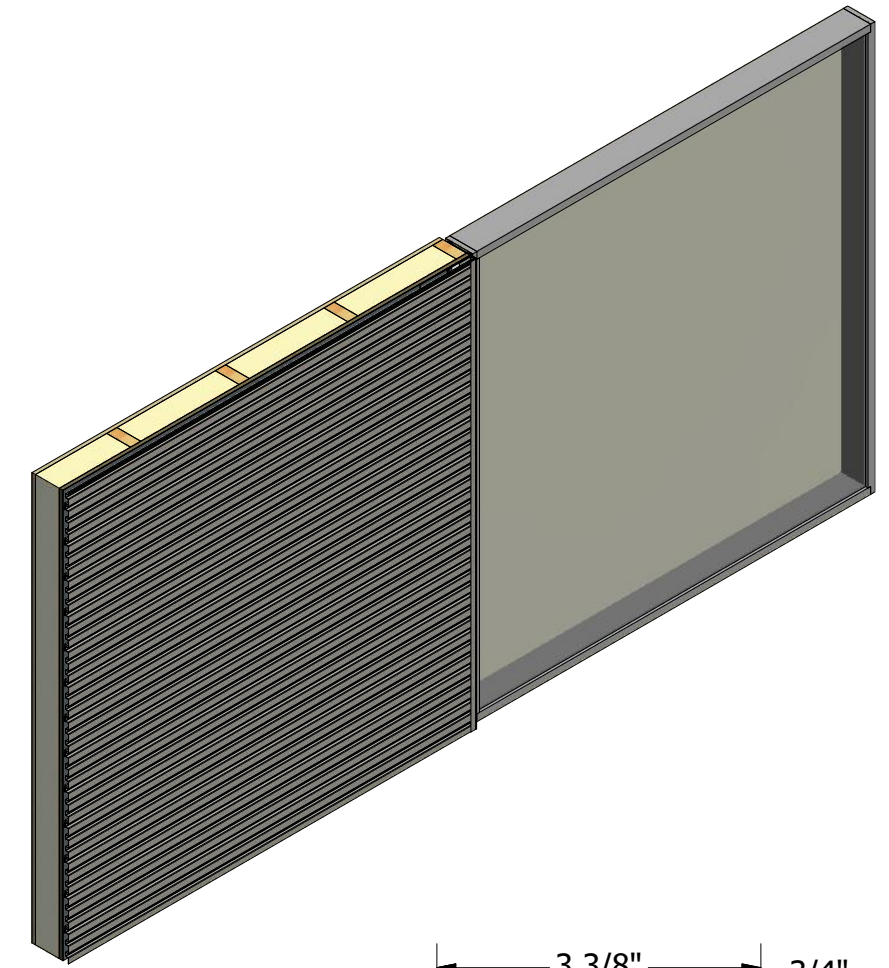
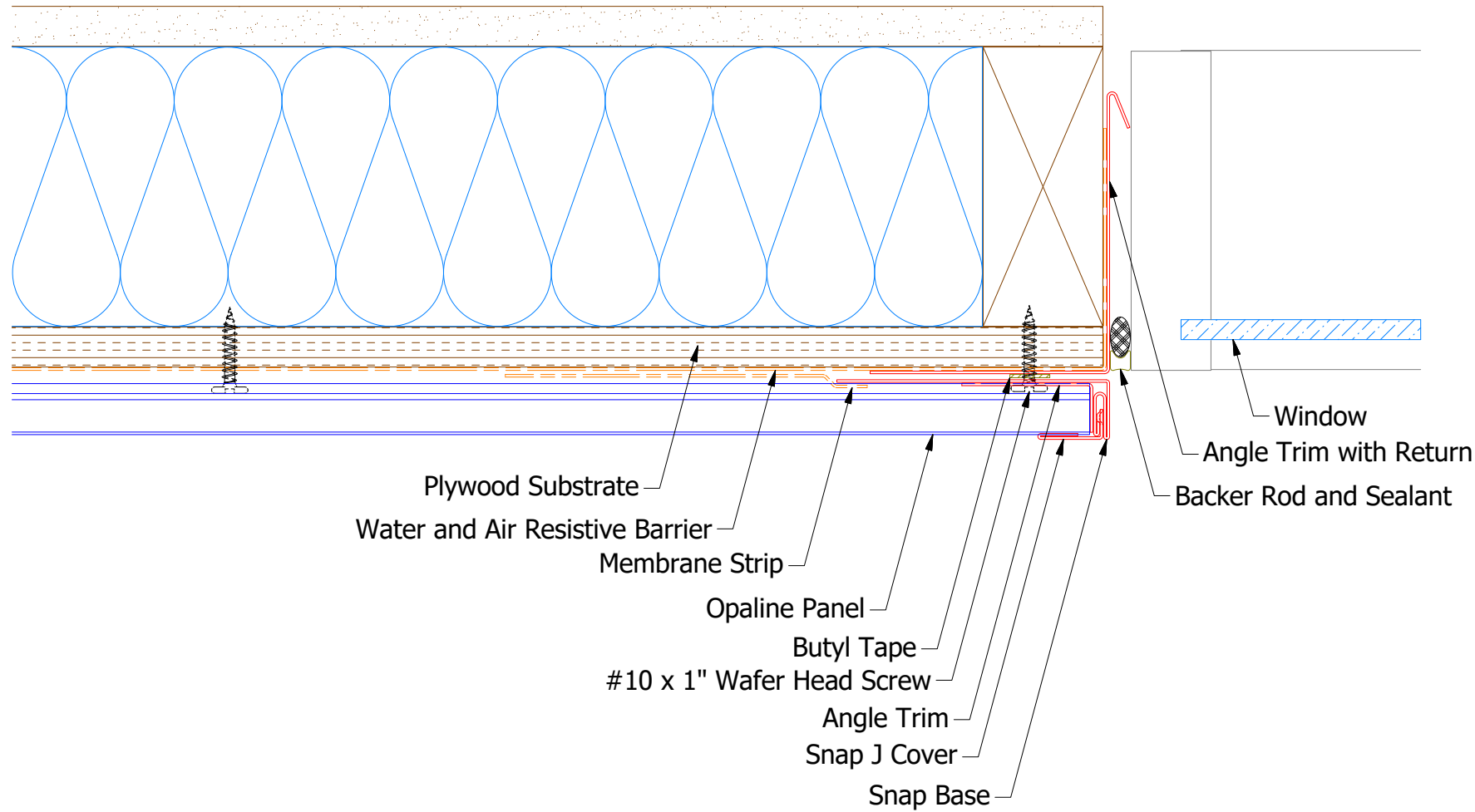
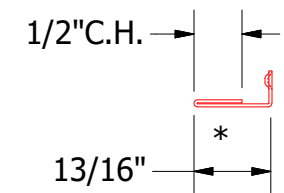


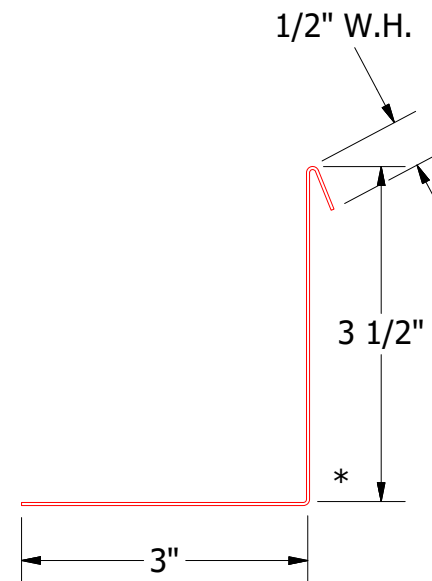
Horizontal Panel - Alternate



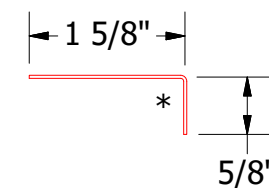
OPA039 - Snap J Base



UNS078 - Snap J Cover



OPA683 - Angle Trim With Return



OPA680 - Angle Trim

Note: * denotes color side.

		ATAS INTERNATIONAL, INC Allentown PA 610-395-8445 Mesa AZ 480-558-7210	
TITLE Opaline Jamb Alt Detail			
DWG. NO.	DR MBP	DATE 7/6/2016	APP DAS
REV. NO.	DATE	DESCRIPTION OF REVISION	BY APP
MATERIAL		SH. SIZE B	SCALE X:X