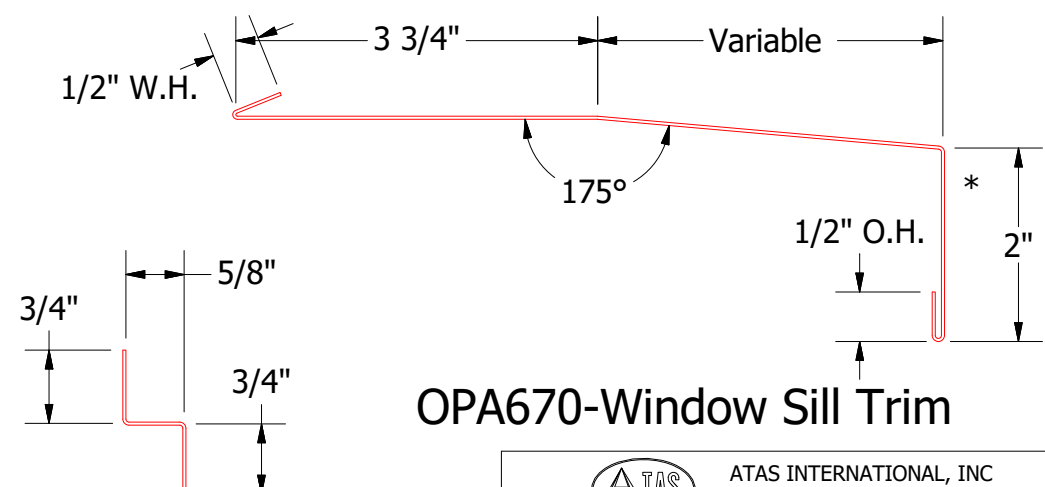
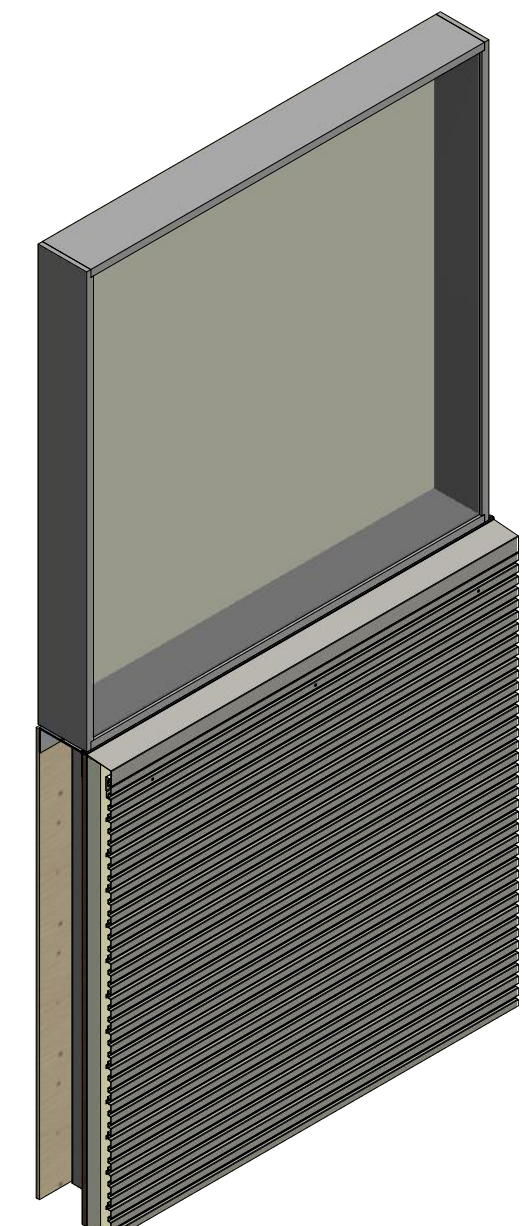
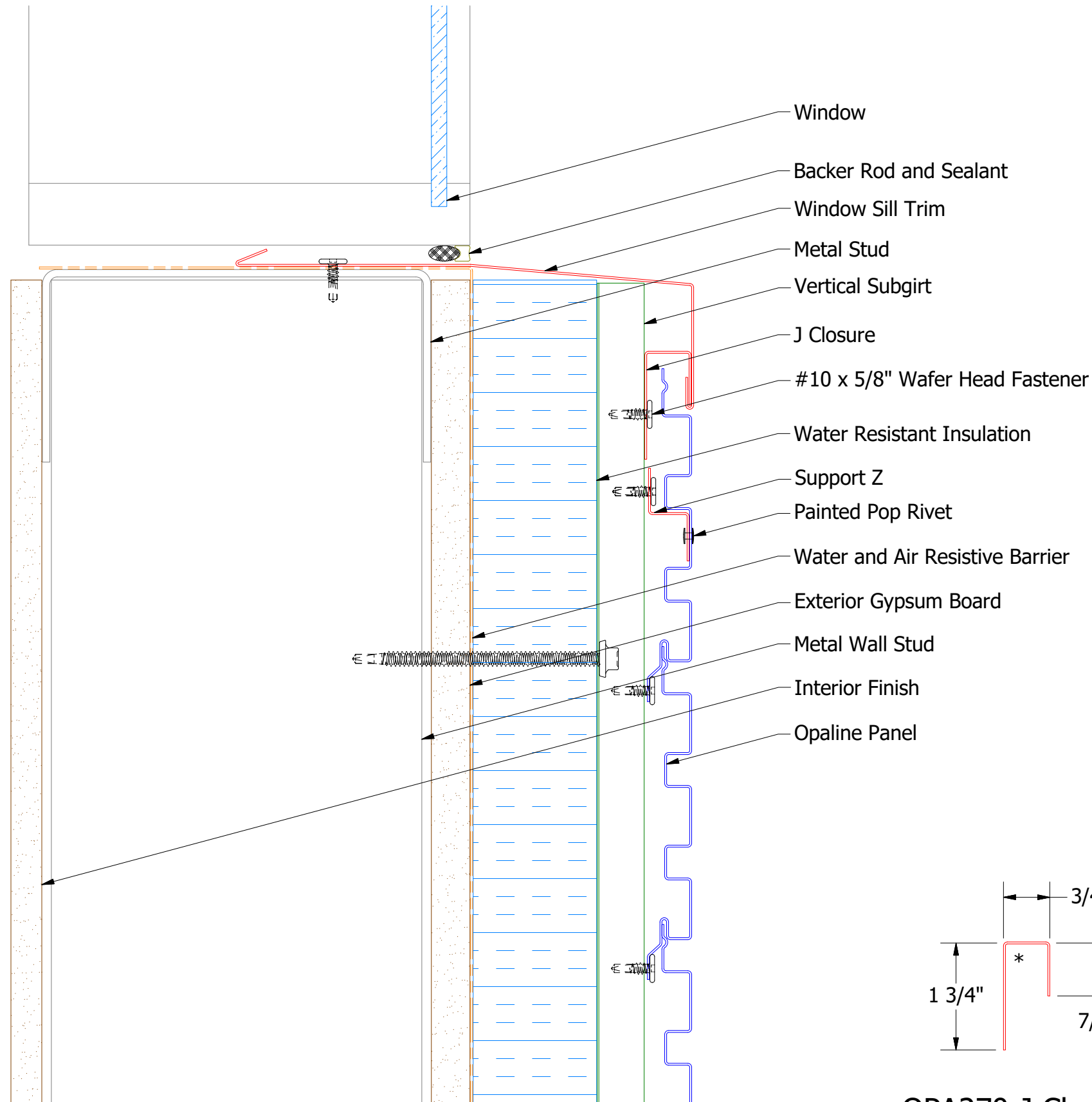
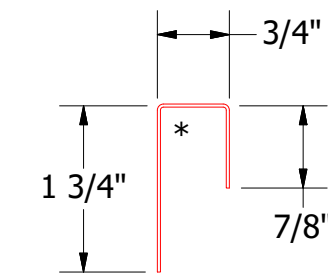


# Horizontal Panel



OPA670-Window Sill Trim



OPA270-J Closure

OPA681-Support Z

REV. NO.		DATE	DESCRIPTION OF REVISION	BY	APP	TITLE		Opaline Open Window Sill Detail	
DWG. NO.		DR	DMR	DATE	10/13/2016	MATERIAL		SH. SIZE B SCALE X:X	

**ATAS**  
 ATAS INTERNATIONAL, INC  
 Allentown PA  
 610-395-8445  
 Mesa AZ  
 480-558-7210