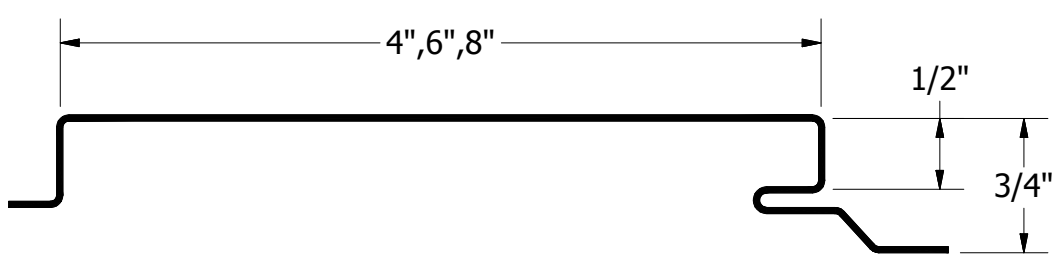
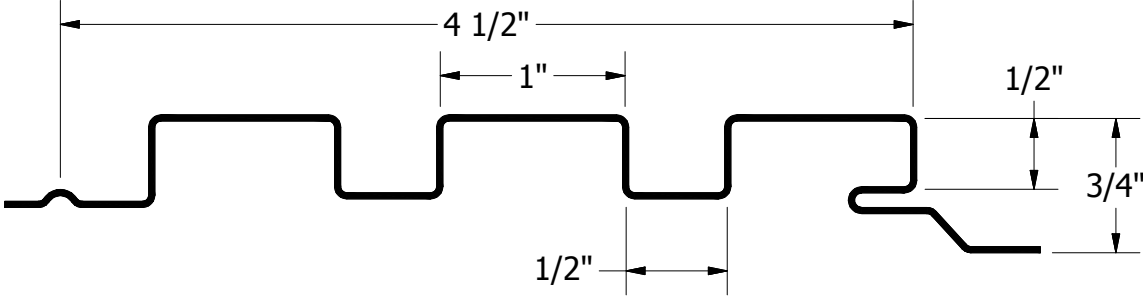


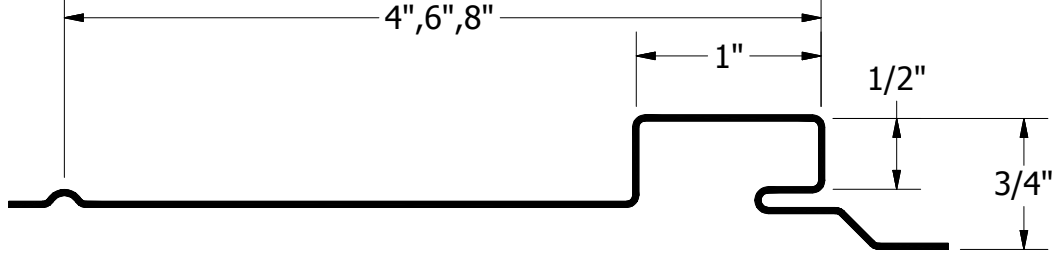
OPF



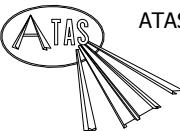
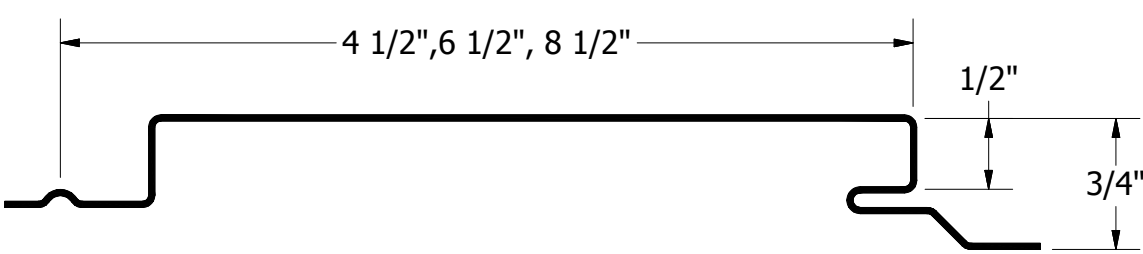
OPM



OPN



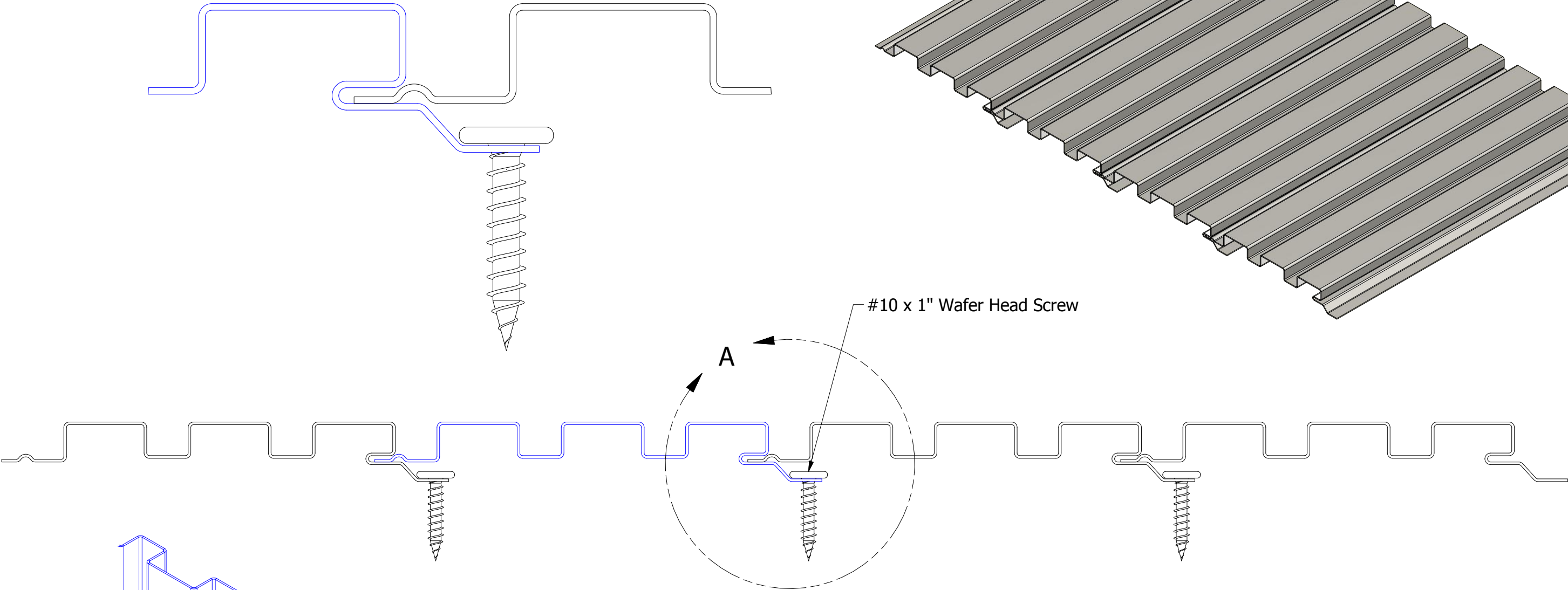
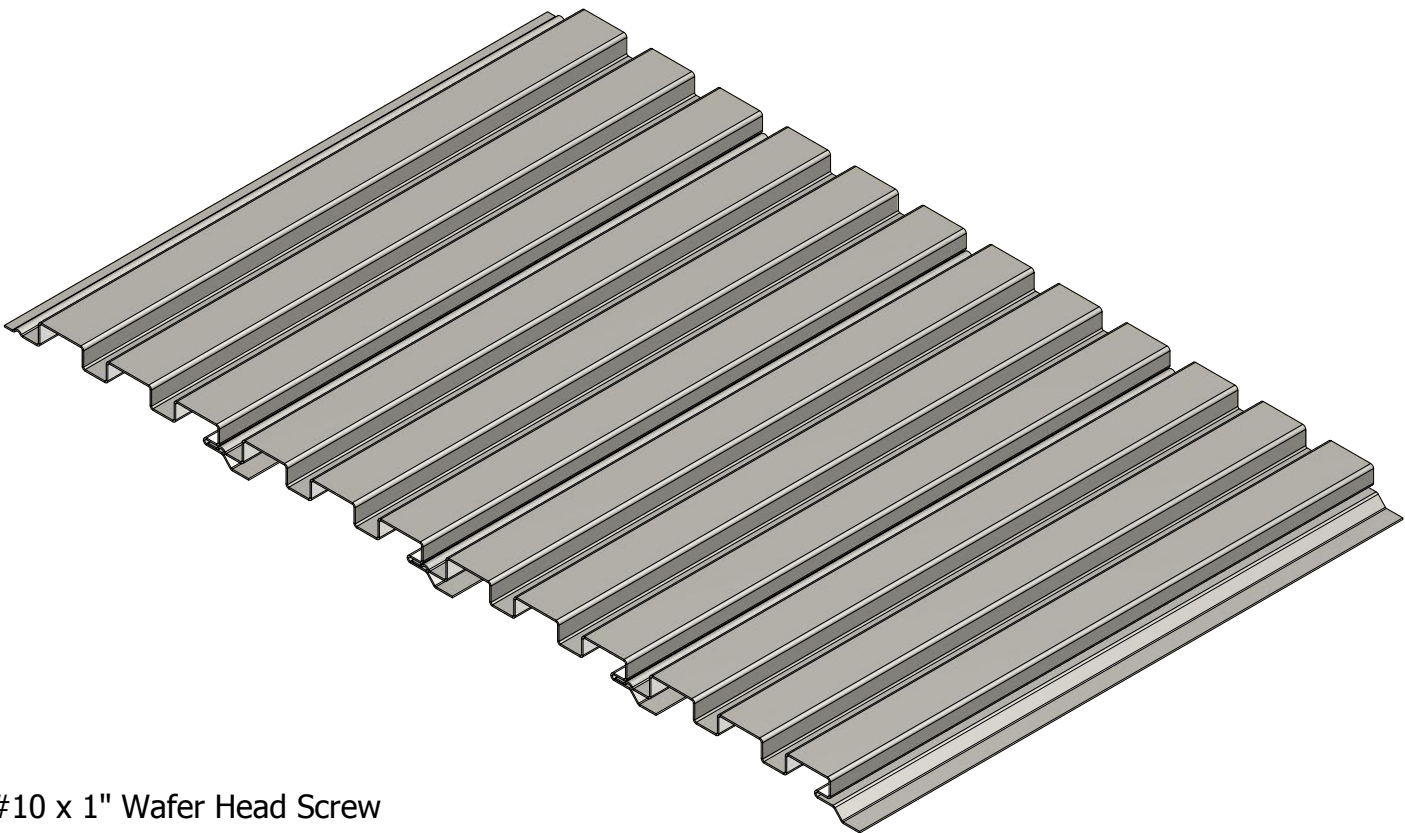
OPW



ATAS INTERNATIONAL, INC
Allentown PA
610-395-8445
Mesa AZ
480-558-7210

TITLE			Opaline Line Drawing Detail		
DWG. NO.			DR	KRK	DATE 4/16/2015
			APP	DAS	DATE 8/4/16
MATERIAL			SH. SIZE	B	SCALE X:X

REV. NO.	DATE	DESCRIPTION OF REVISION	BY	APP

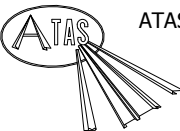


#10 x 1" Wafer Head Screw

A

Pre-Drilled Fastener Hole

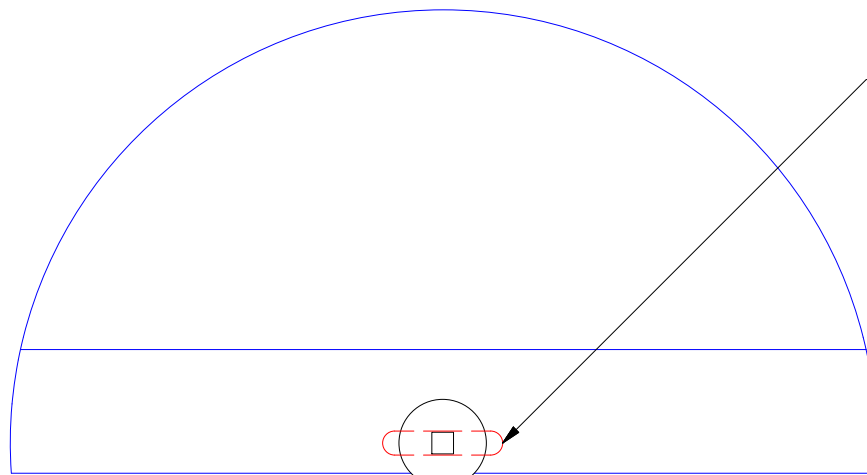
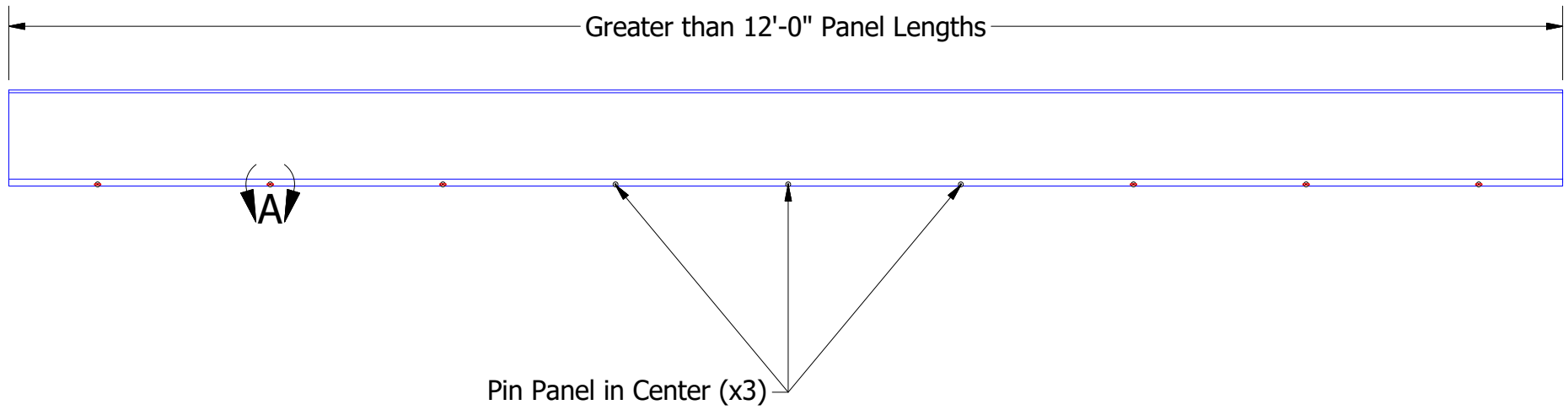
Pre-Drill Fastener Holes for Panels Greater than 20'-0" in Length



ATAS INTERNATIONAL, INC
Allentown PA
610-395-8445
Mesa AZ
480-558-7210

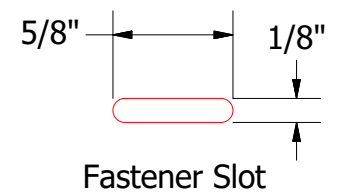
TITLE				Opaline Panel Installation Detail		
DWG. NO.		DR		DMR	DATE	
		APP			DATE	
MATERIAL		SH. SIZE		B	SCALE	
					X:X	

REV. NO.	DATE	DESCRIPTION OF REVISION	BY	APP



DETAIL A

Field Pre-Punch Fastener Slots to allow for Panel Expansion and Contraction.



Secure Fastener in Center of the Slot

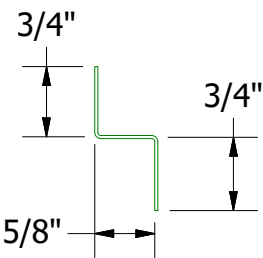
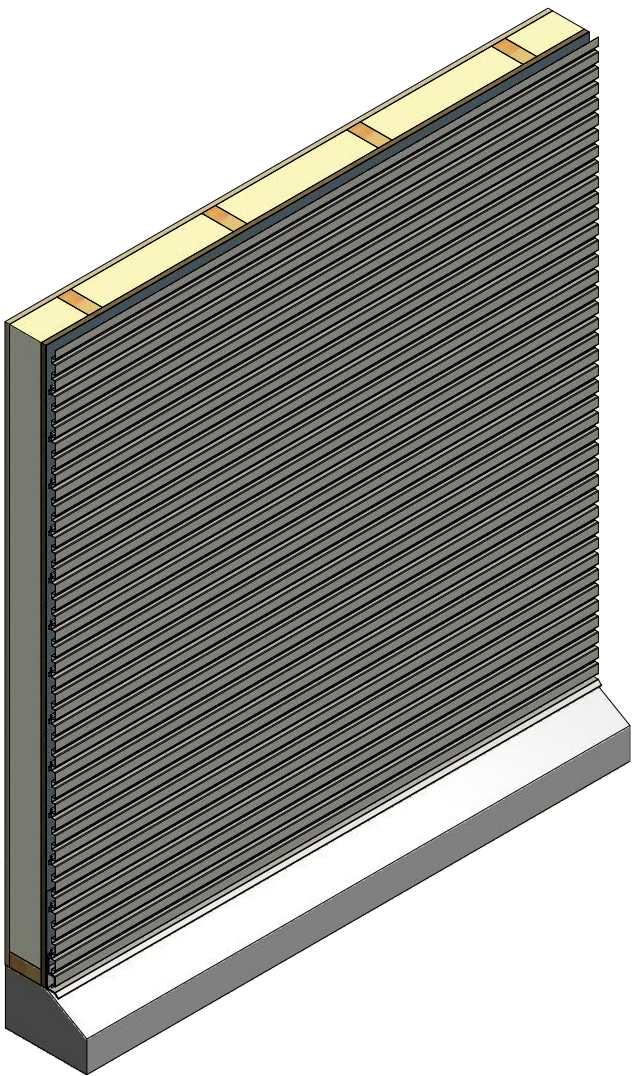
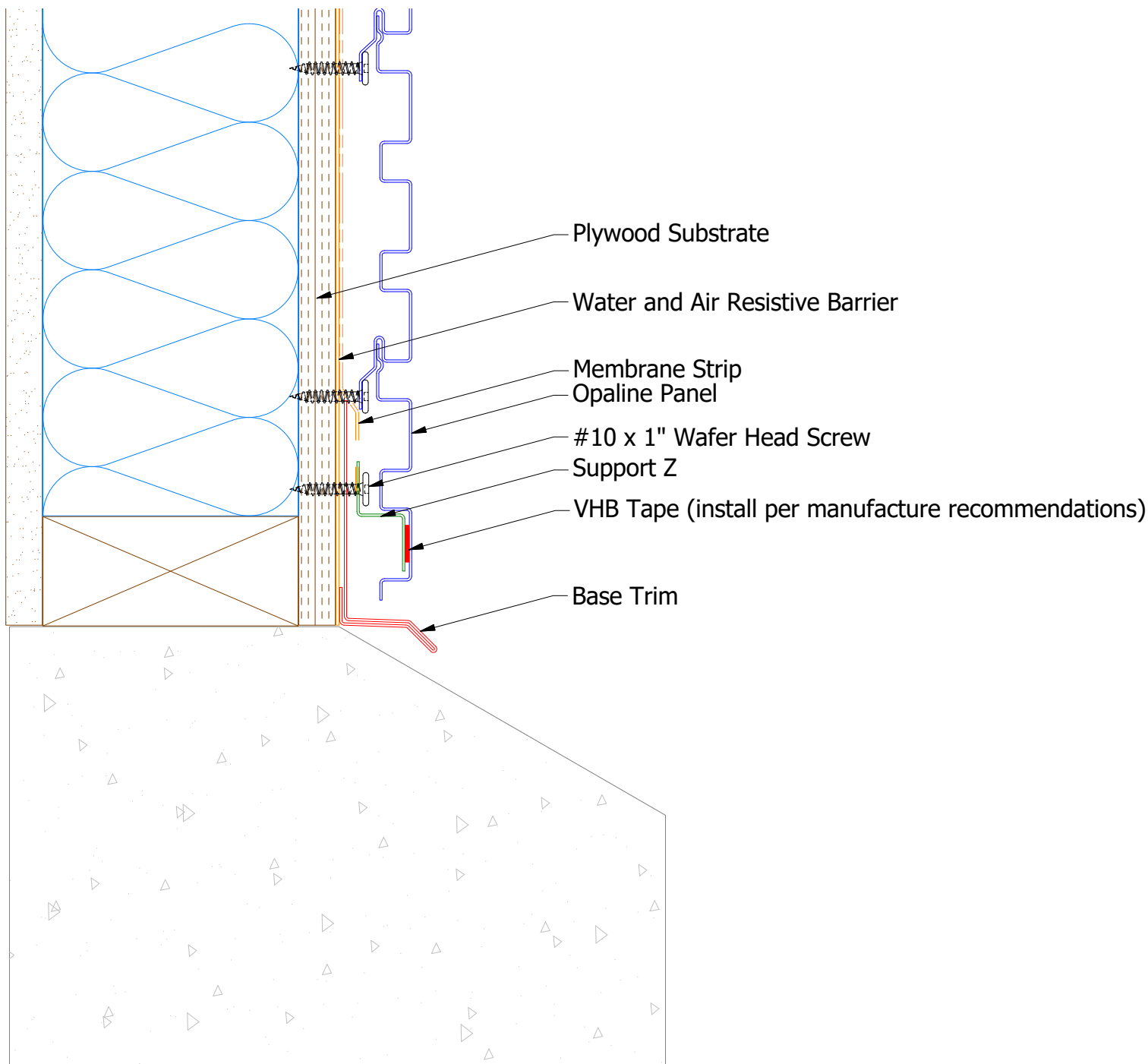


ATAS INTERNATIONAL, INC
Allentown PA
610-395-8445
Mesa AZ
480-558-7210

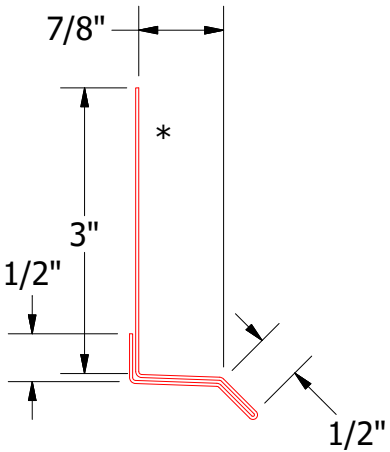
TITLE		Opaline Fastener Slots Detail	
DWG. NO.		DR	DATE
		DMR	5/13/2021
MATERIAL		APP	DATE
		SH. SIZE	SCALE
		A	X:X

REV. NO.	DATE	DESCRIPTION OF REVISION	BY	APP

Horizontal Panel



OPA681 - Support Z

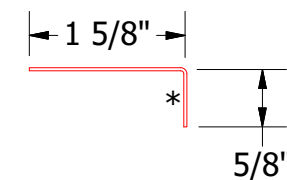
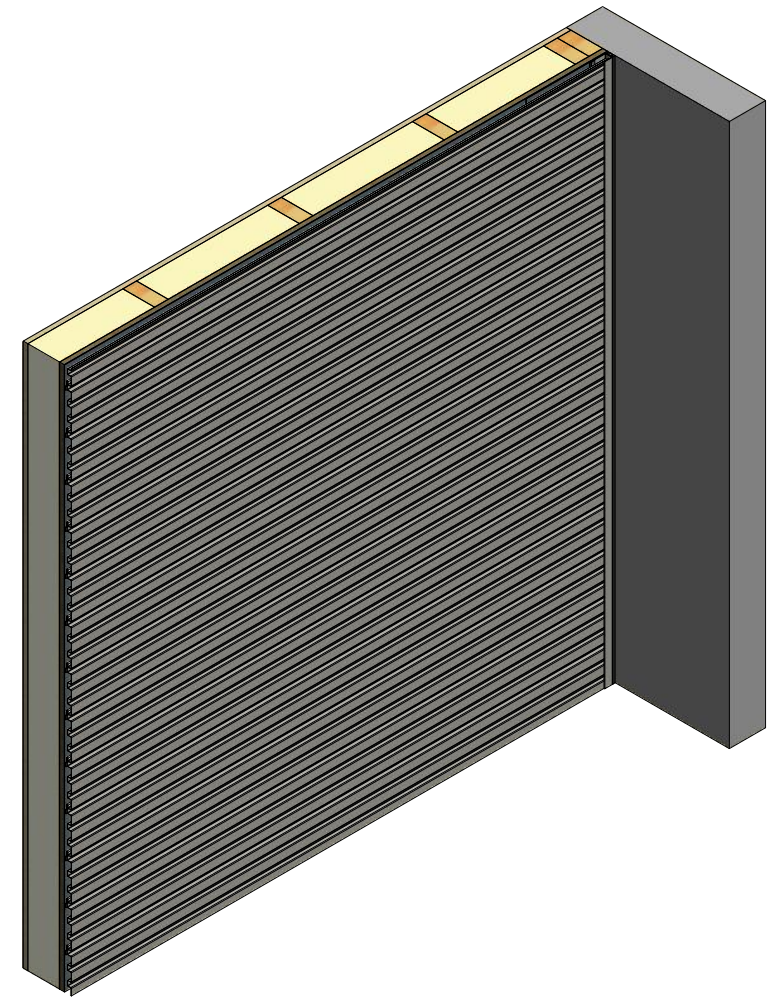
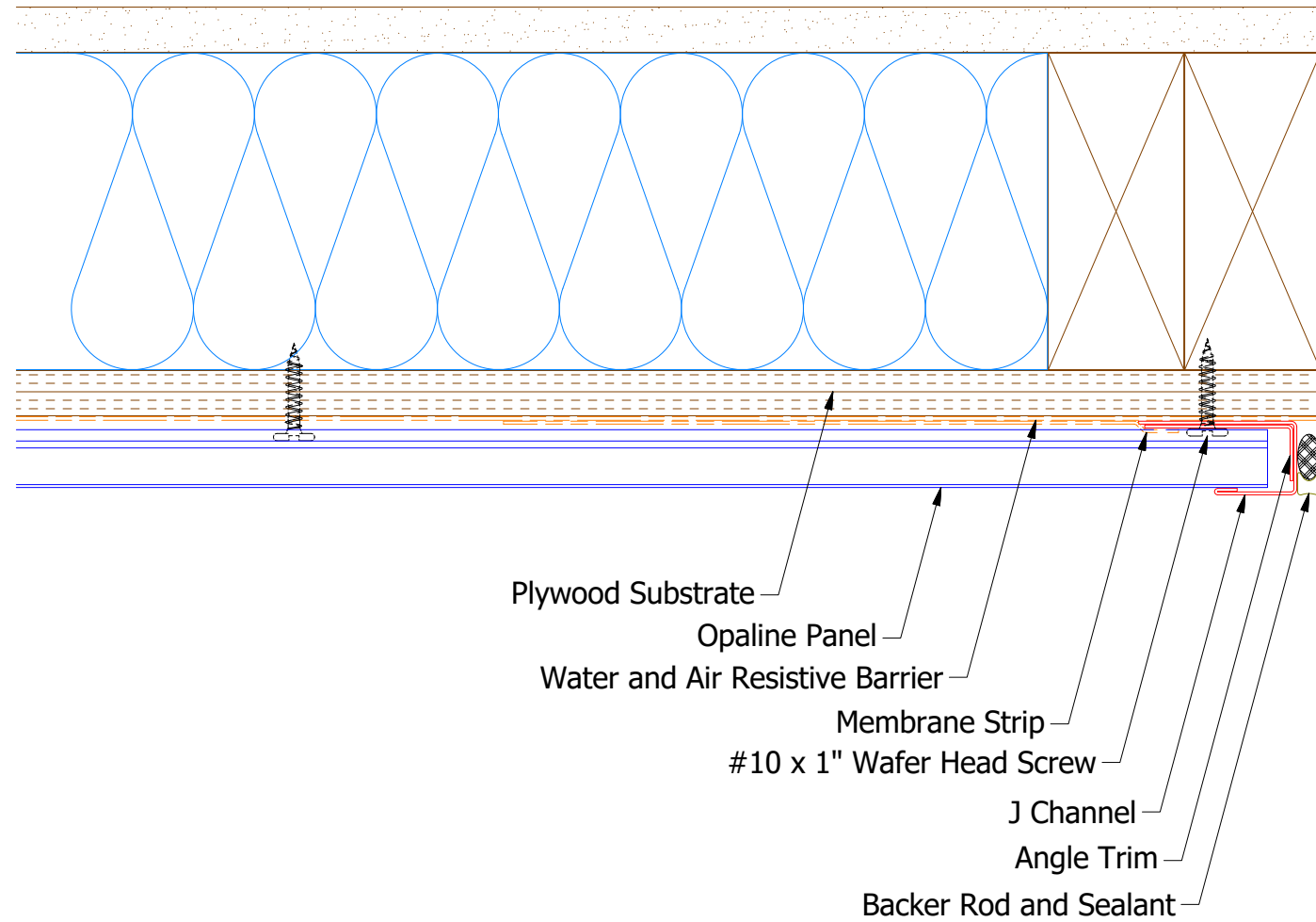


OPA661 - Base Trim

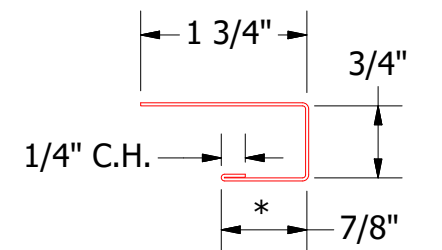
Note: * denotes color side.
Note: Stainless Steel Pop Rivets maybe needed along with VHB Tape for longer Panels.

				ATAS INTERNATIONAL, INC Allentown PA 610-395-8445 Mesa AZ 480-558-7210			
				TITLE Opaline Base Detail			
				DWG. NO.		DR MBP	DATE 7/5/2016
01				8/27/2021		APP DAS	DATE 7/28/16
REV. NO.				DATE		SH. SIZE B	SCALE X:X
				DESCRIPTION OF REVISION		BY	APP
				Changed Pop Rivets to VHB Tape		KRK	

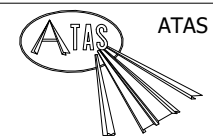
Horizontal Panel



OPA680 - Angle Trim



OPA034 - J Channel

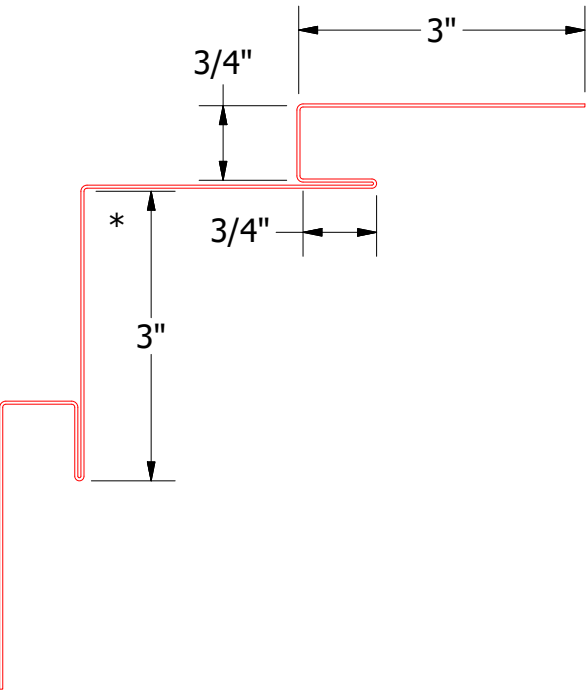
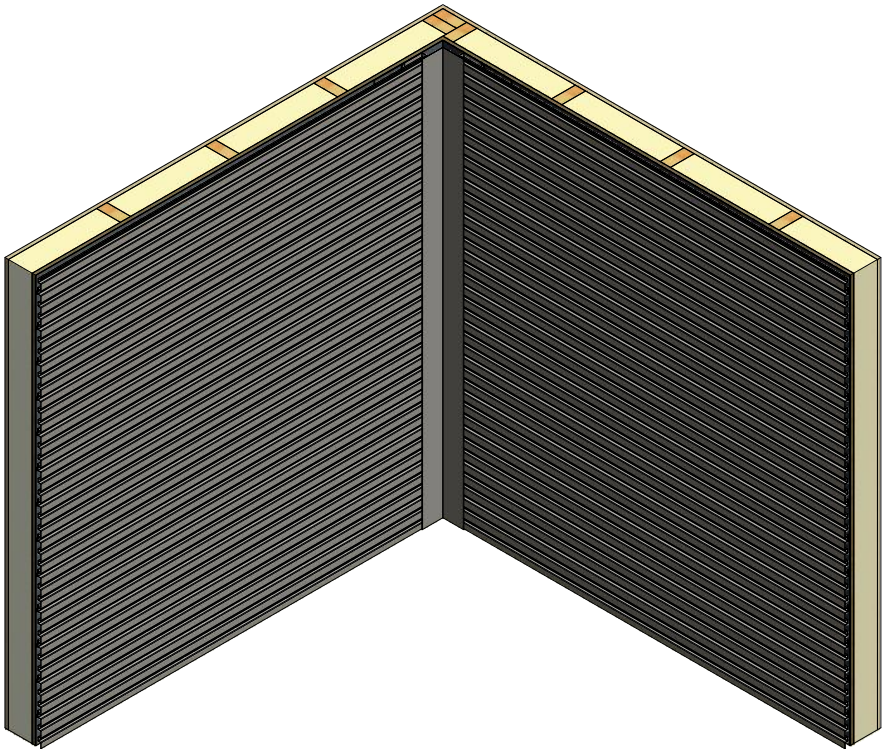
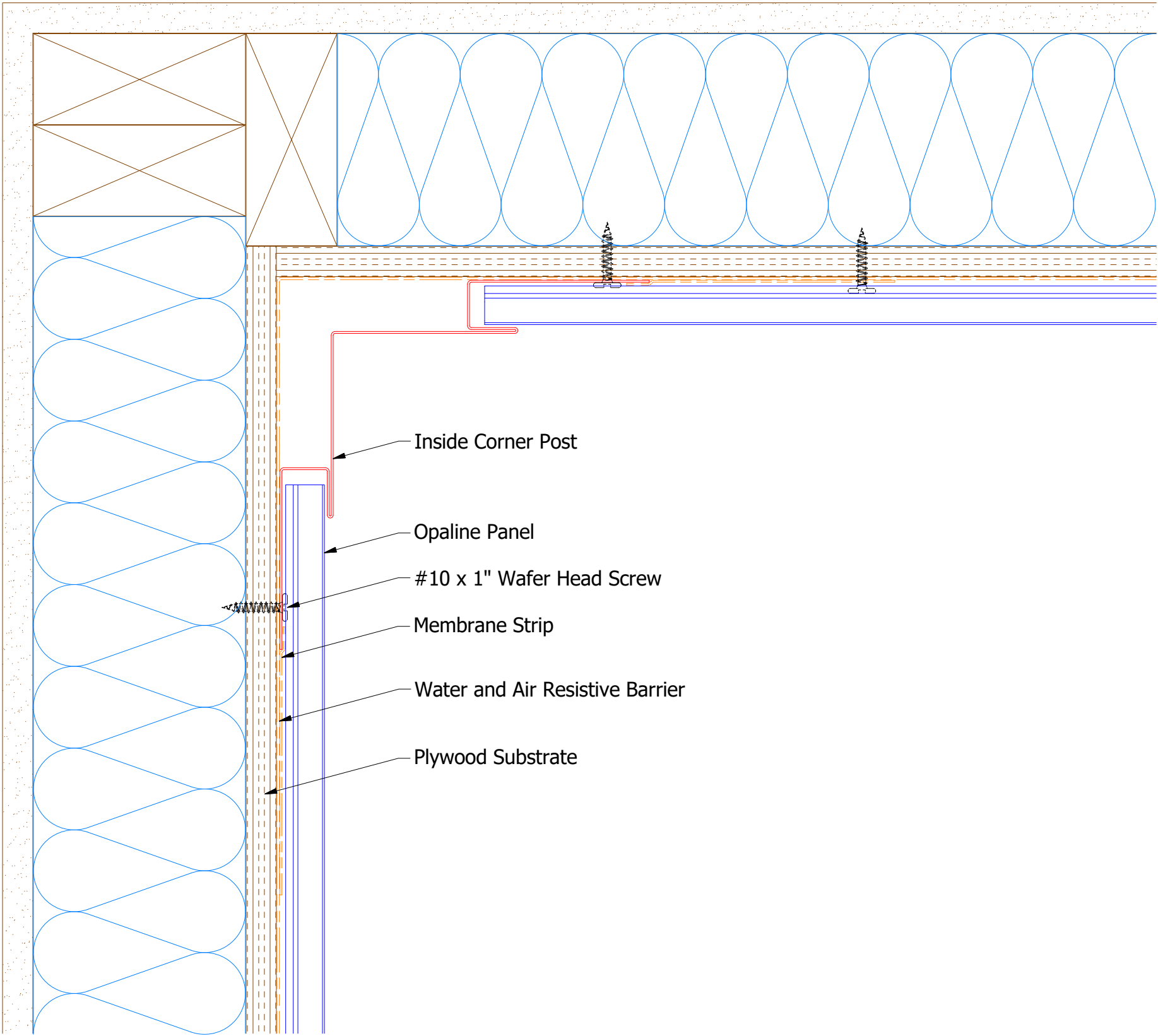


ATAS INTERNATIONAL, INC
Allentown PA
610-395-8445
Mesa AZ
480-558-7210

					TITLE			
					Opaline Endwall Detail			
					DWG. NO.			DR MBP DATE 7/6/2016
					MATERIAL			APP DAS DATE 7/28/16
REV. NO.	DATE	DESCRIPTION OF REVISION	BY	APP	SH. SIZE B			SCALE X:X

Note: * denotes color side.

Horizontal Panel

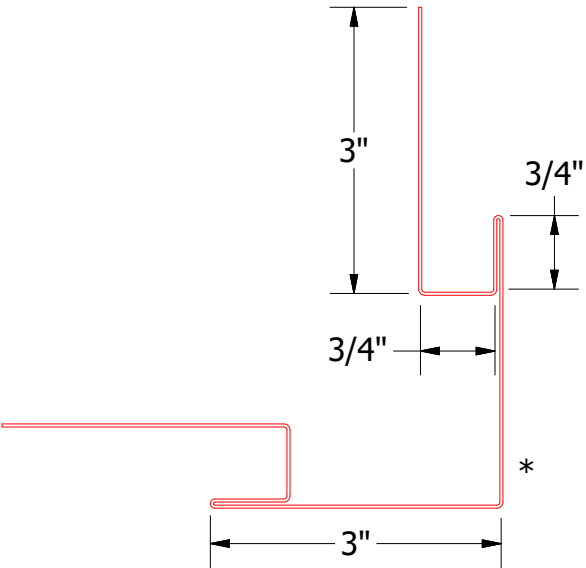
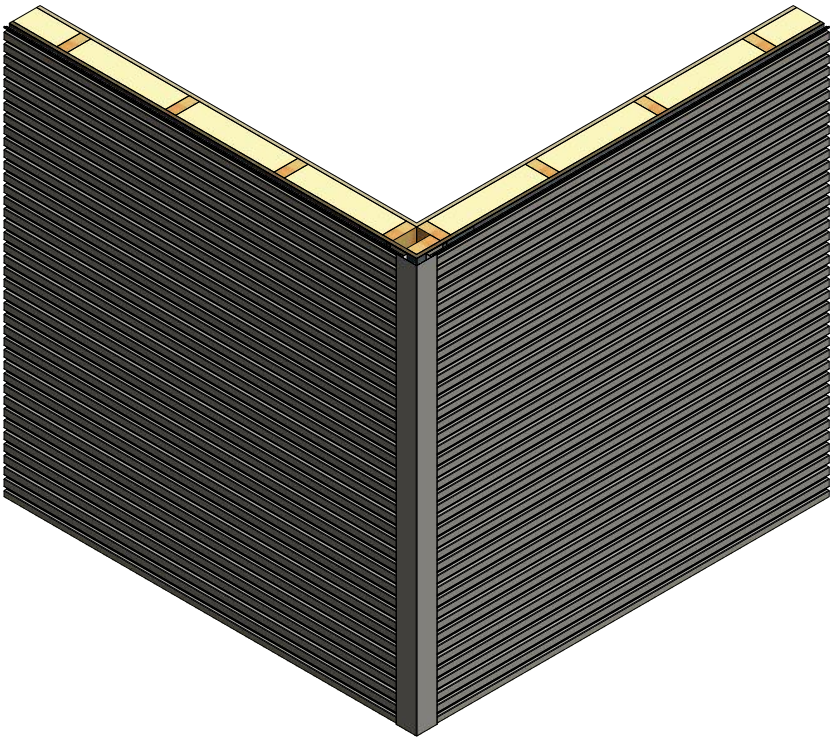
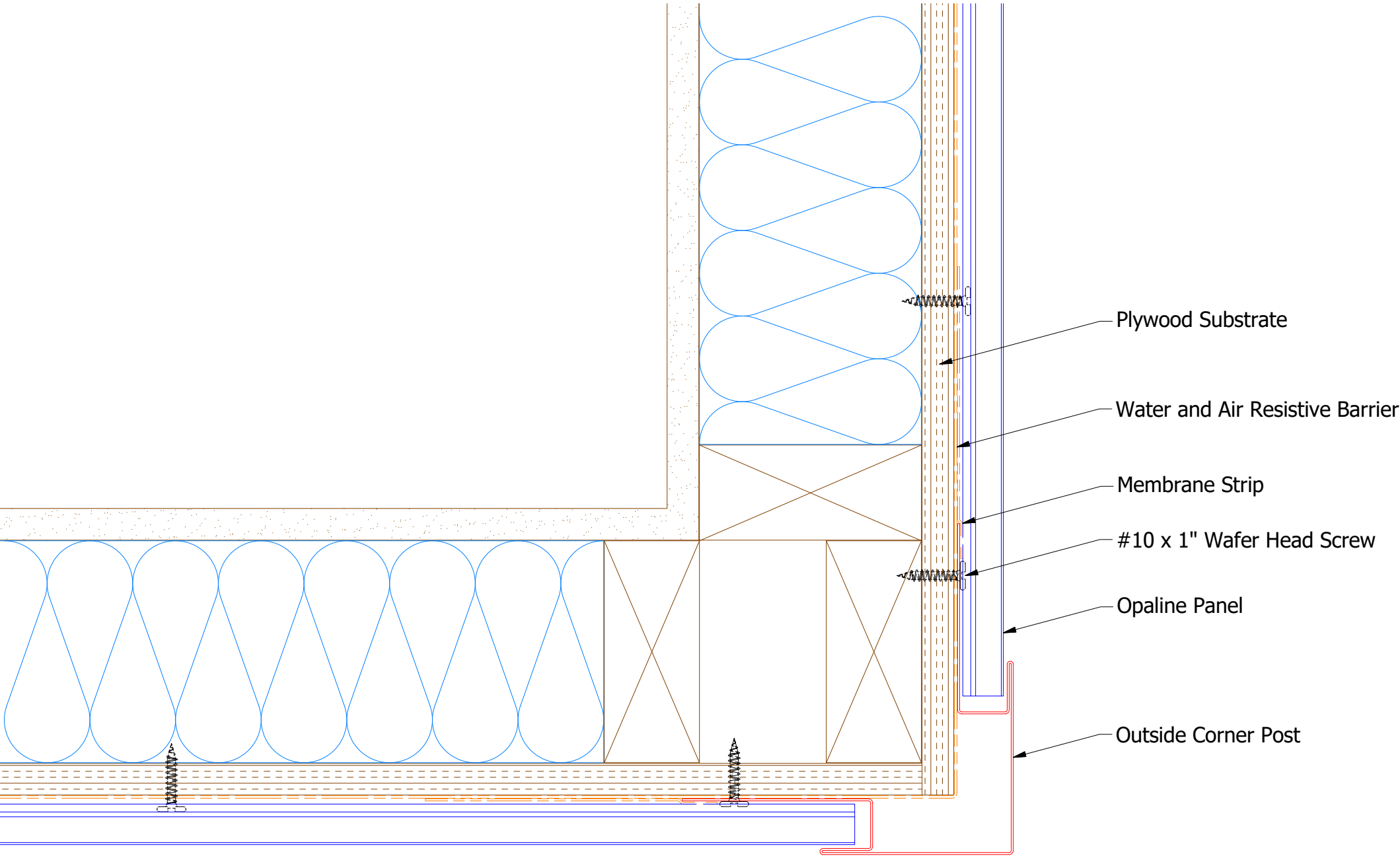


OPA601 - Inside Corner Post

Note: * denotes color side.

					<div><div><div>ATAS</div></div><div>ATAS INTERNATIONAL, INC Allentown PA 610-395-8445 Mesa AZ 480-558-7210</div></div>	
					TITLE Opaline Inside Corner Detail	
		DWG. NO.			DR MBP APP DAS	DATE 7/6/2016 7/28/16
		MATERIAL			SH. SIZE B	SCALE X:X
REV. NO.	DATE	DESCRIPTION OF REVISION	BY	APP		

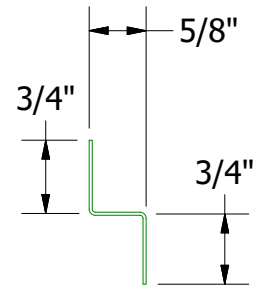
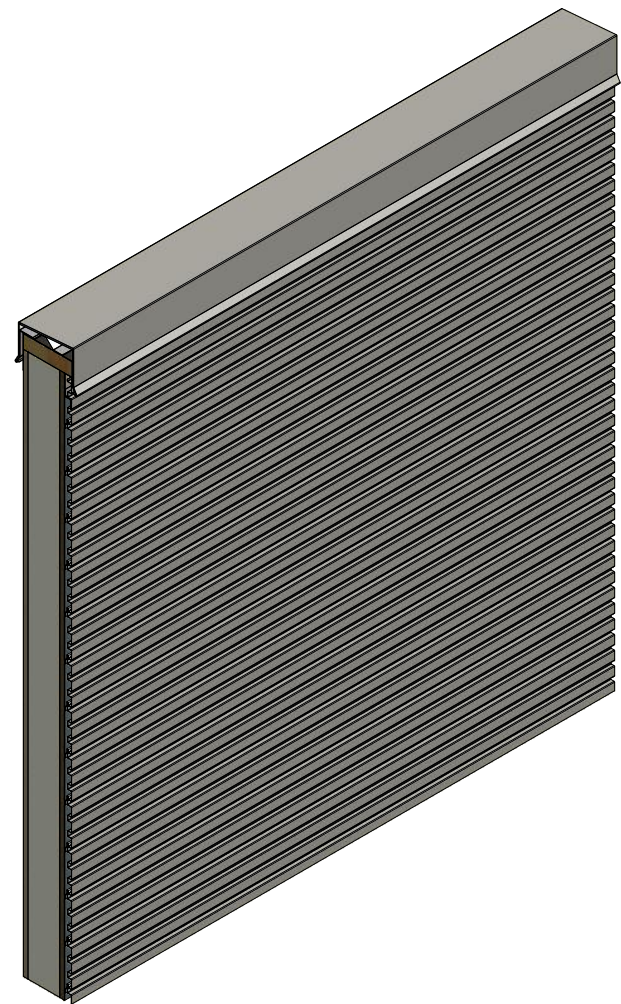
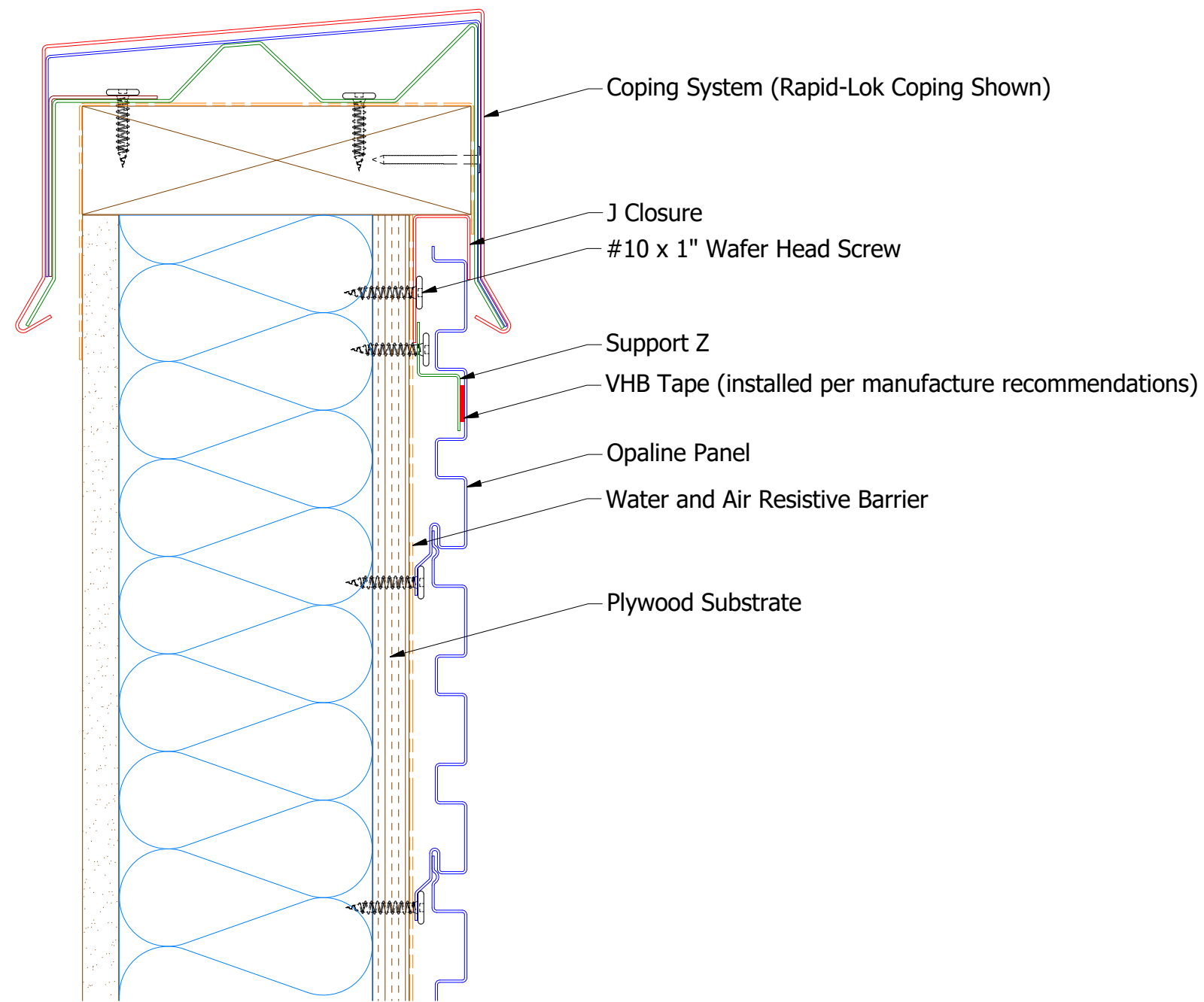
Horizontal Panel



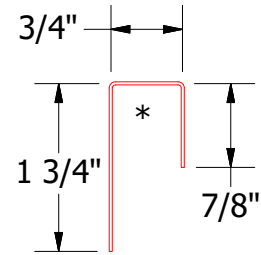
OPA602 - Outside Corner Post

Note: * denotes color side.

Horizontal Panel



OPA681 - Support Z



OPA270 - J Closure

Note: * denotes color side.

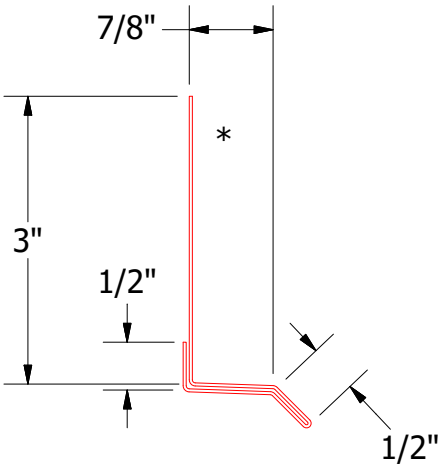
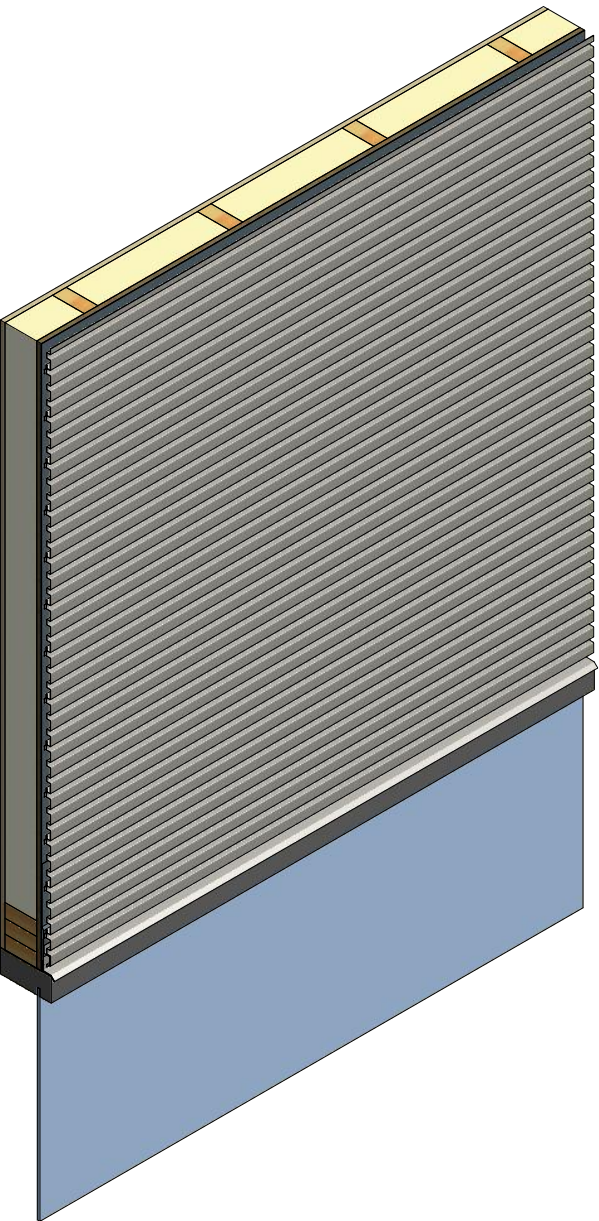
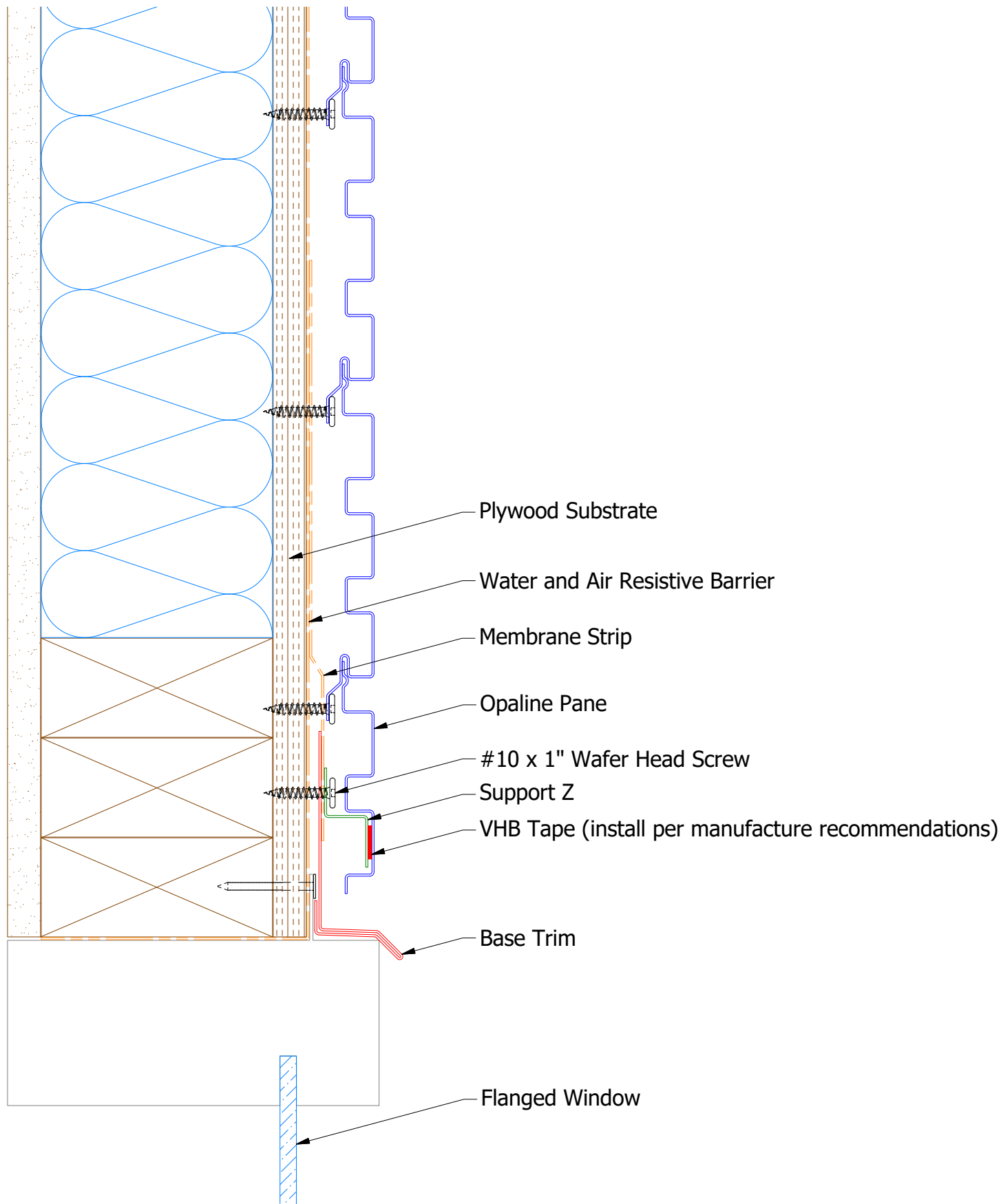
Note: stainless steel pop rivets maybe needed along with VHB tape for longer panels.

						TITLE Opaline Top of Wall Detail					
						DWG. NO.		DR	MBP	DATE	7/6/2016
01	8/31/2021	Changed Pop Rivets to VHB Tape			KRK	MATERIAL		APP	DAS	DATE	8/1/16
REV. NO.	DATE	DESCRIPTION OF REVISION			BY	APP	SH. SIZE		B	SCALE	X:X

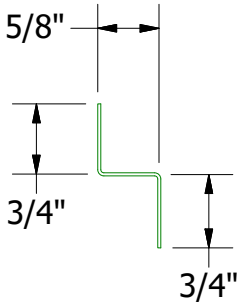


ATAS INTERNATIONAL, INC
Allentown PA
610-395-8445
Mesa AZ
480-558-7210

Horizontal Panel



OPA661 - Base Trim



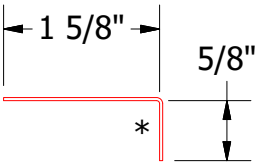
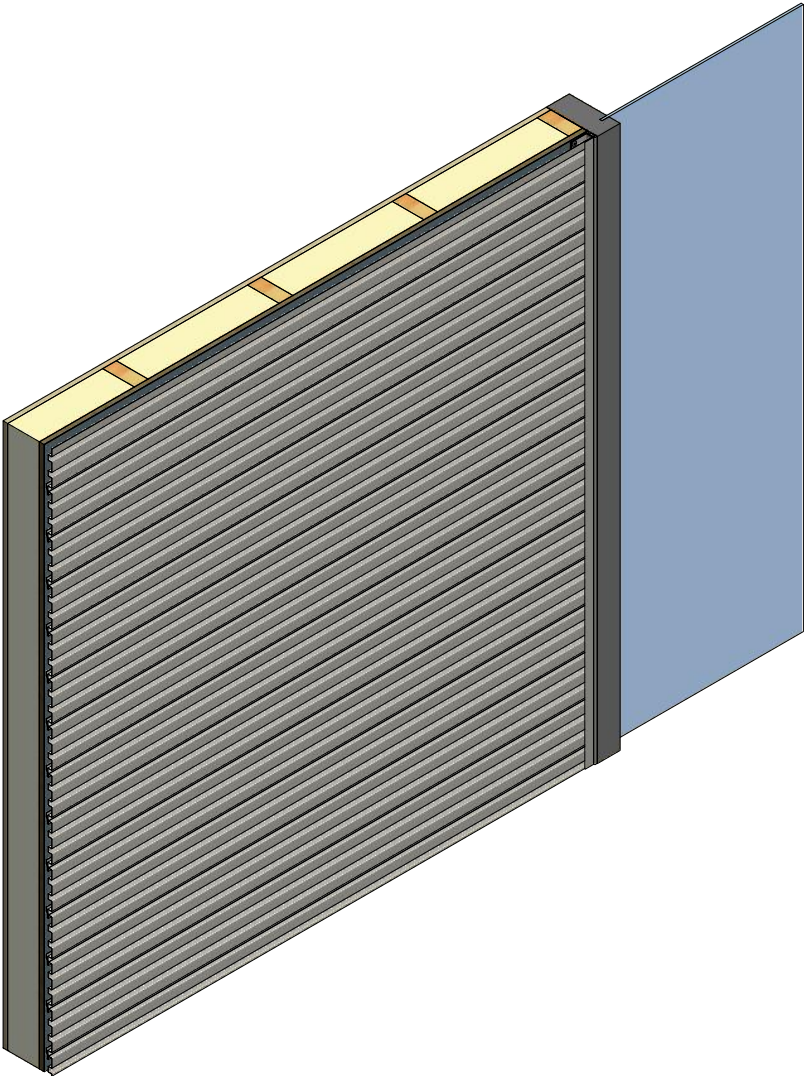
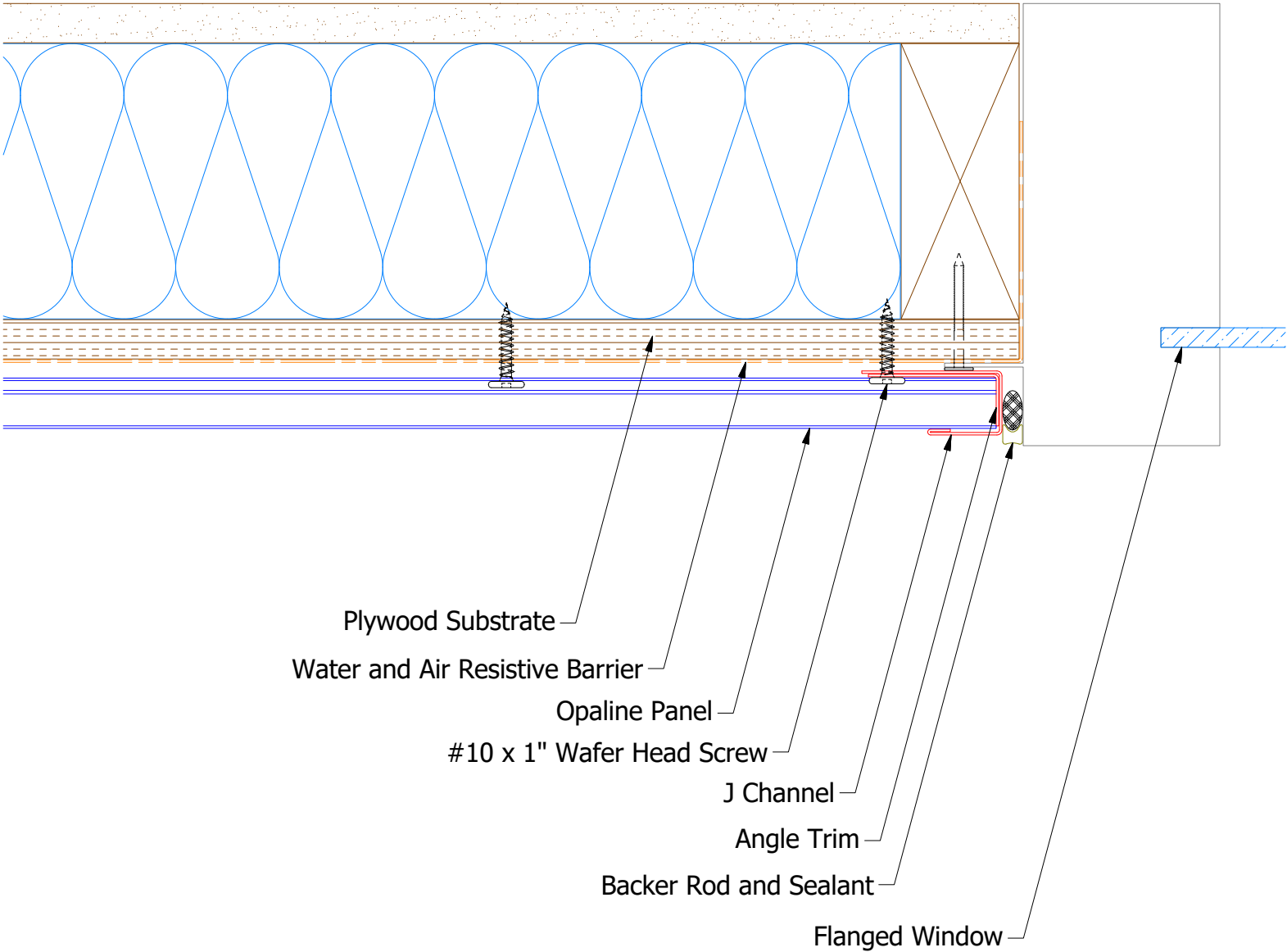
OPA681 - Support Z

		ATAS INTERNATIONAL, INC Allentown PA 610-395-8445 Mesa AZ 480-558-7210	
TITLE Opaline Head Window Flange Detail			
DWG. NO.		DR MBP	DATE 7/31/2018
MATERIAL		APP	DATE
		SH. SIZE B	SCALE X:X

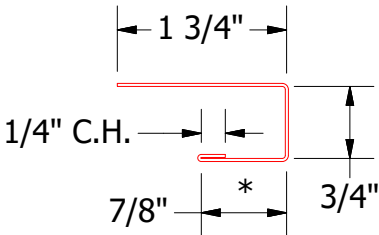
Note: * denotes color side.
Note: stainless steel pop rivets maybe needed along with VHB tape for longer panels.

01	8/30/2021	Changed Pop Rivet to VHB Tape	KRK	
REV. NO.	DATE	DESCRIPTION OF REVISION	BY	APP

Horizontal Panel



OPA680 - Angle Trim

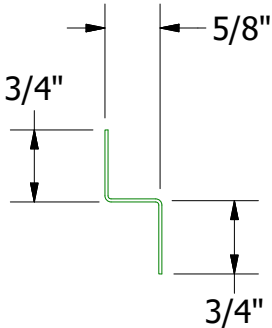
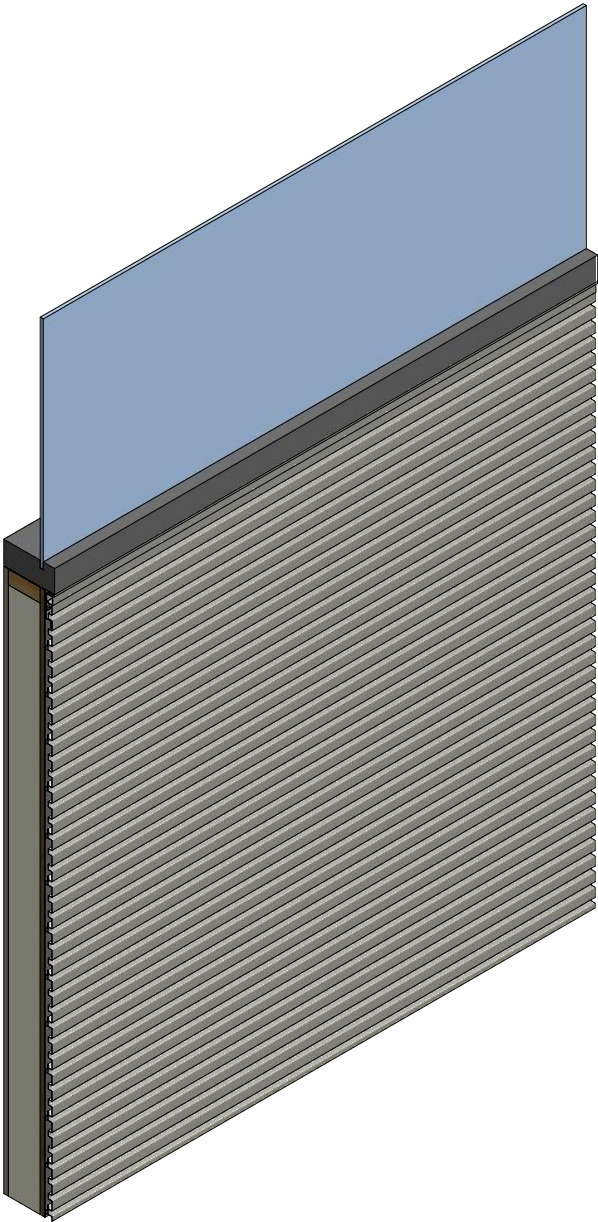
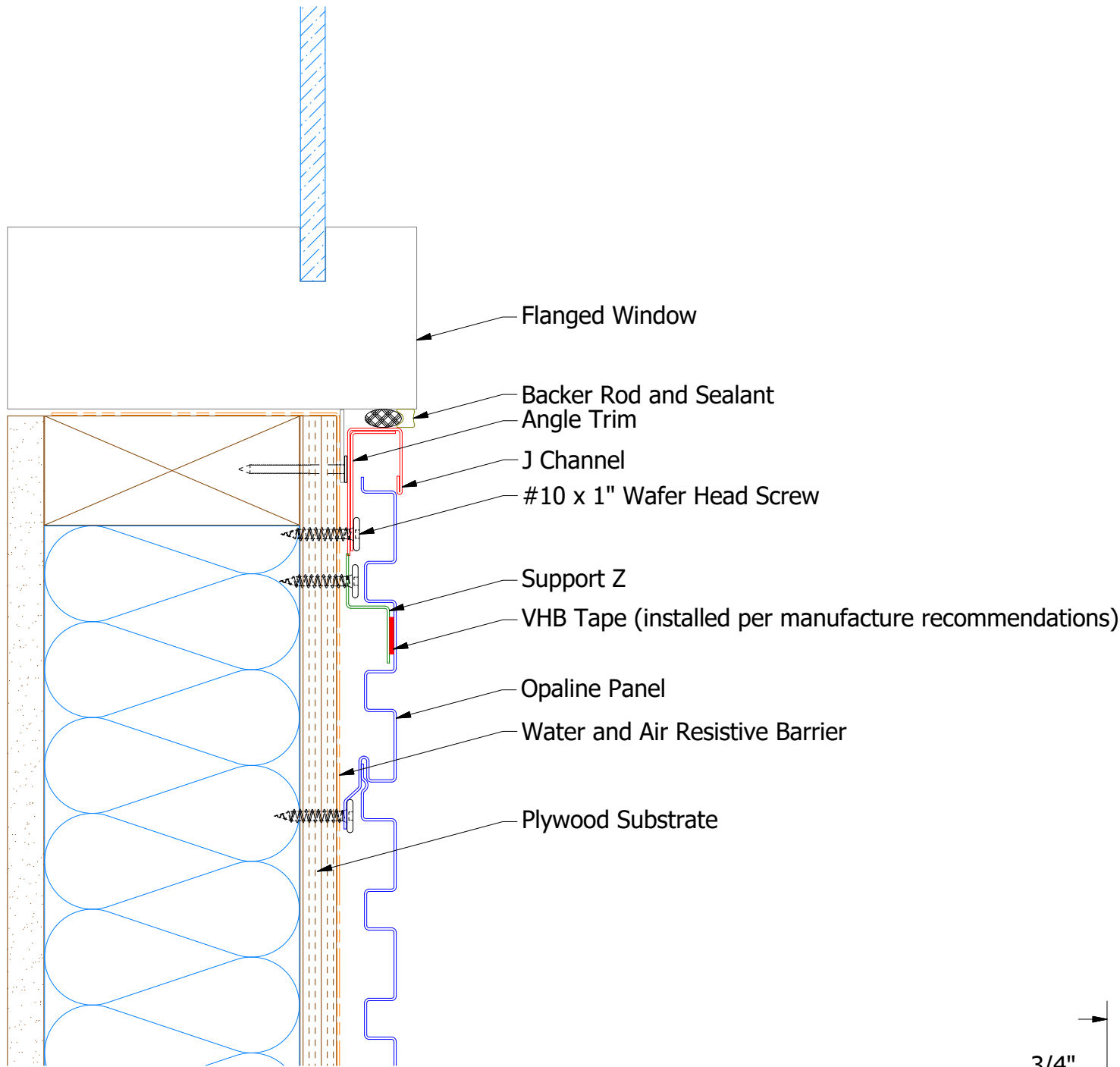


OPA034 - J Channel

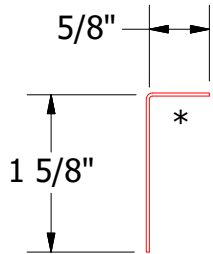
Note: * denotes color side.

								Opaline Jamb Window Flange Detail	

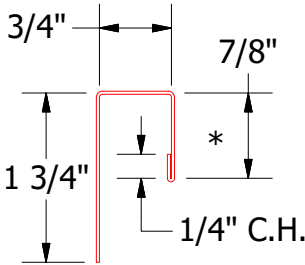
Horizontal Panel



OPA681 - Support Z



OPA680 - Angle Trim

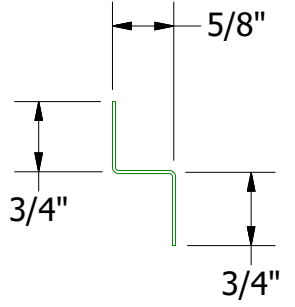
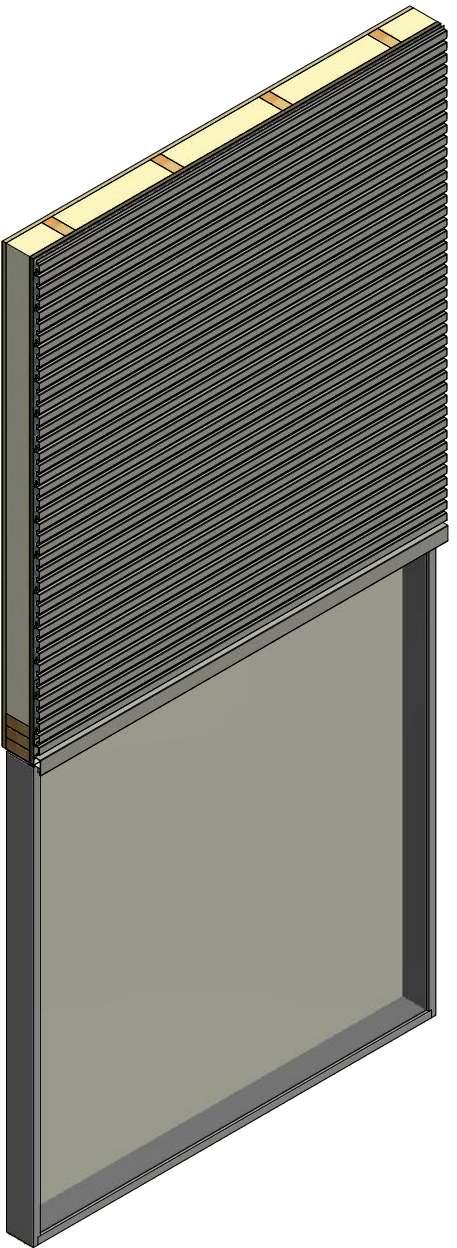
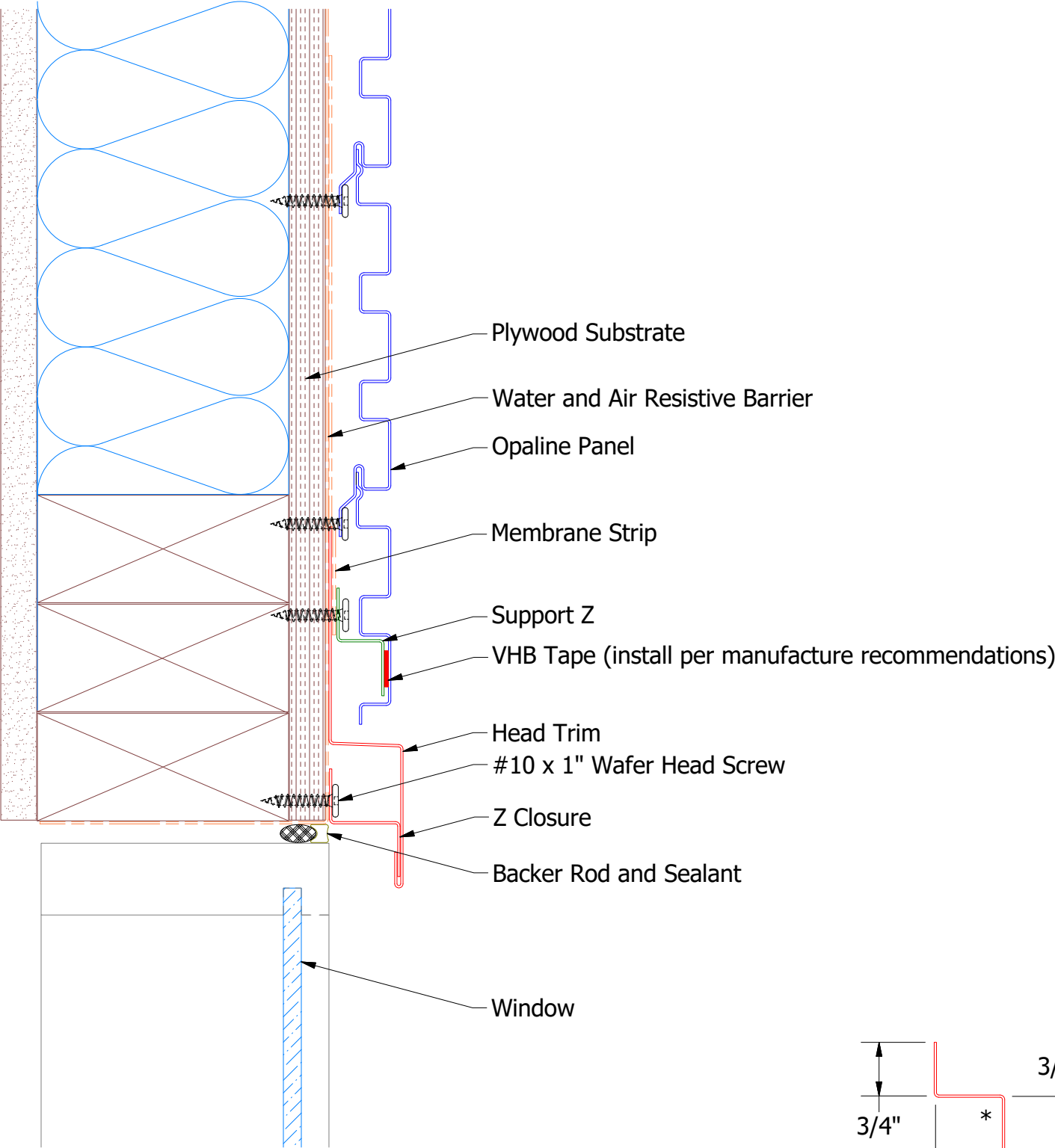


OPA034 - J Channel

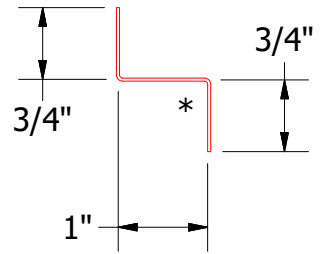
Note: * denotes color side.
Note: stainless steel pop rivets maybe needed along with VHB tape for longer panels.

				ATAS INTERNATIONAL, INC Allentown PA 610-395-8445 Mesa AZ 480-558-7210			
				TITLE Opaline Window Sill Flange Detail			
		DWG. NO.		DR MBP		DATE 7/31/2018	
01		8/31/2021		APP		DATE	
REV. NO.		DATE		DESCRIPTION OF REVISION		BY APP	
						SH. SIZE B	
						SCALE X:X	

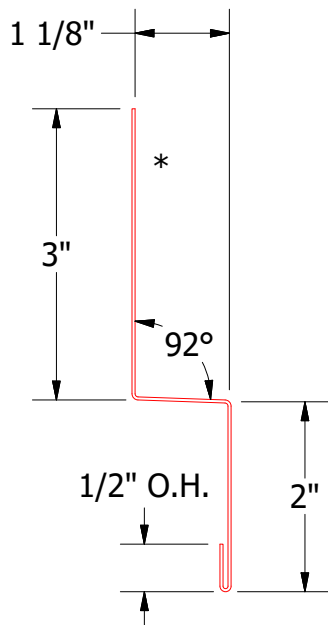
Horizontal Panel



Support Z



OPA681 - Z Closure

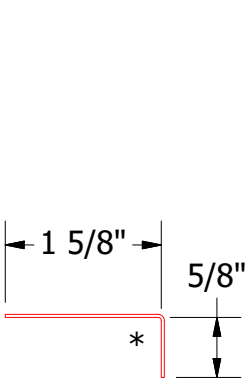
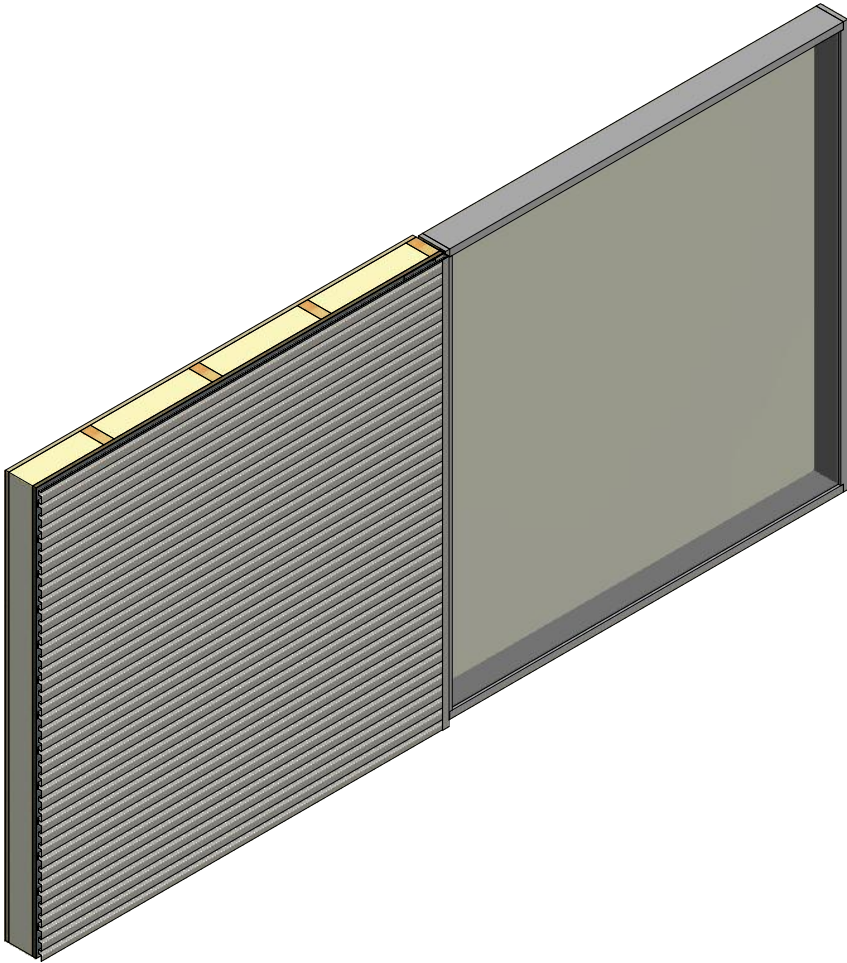
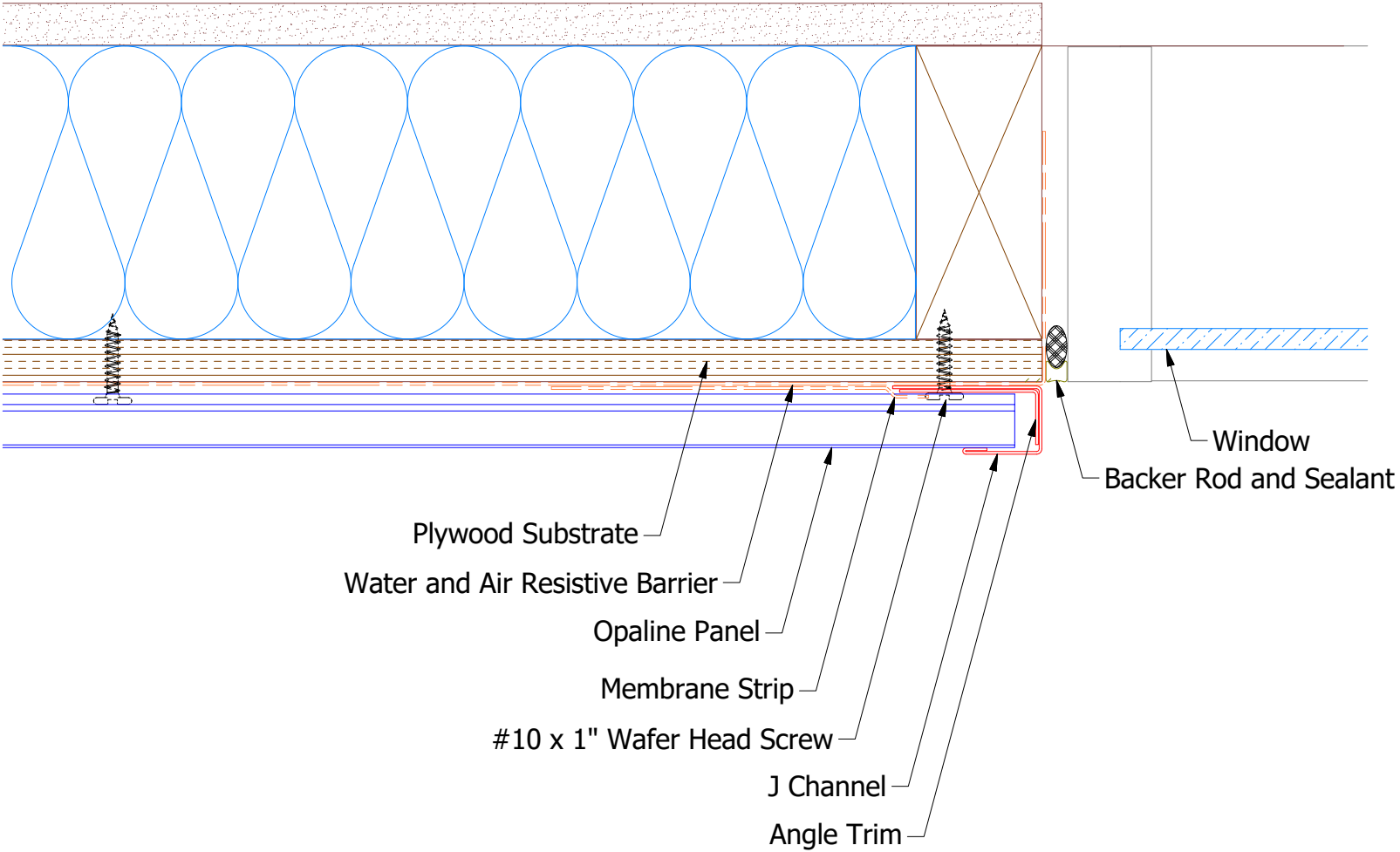


OPA550 - Head Trim

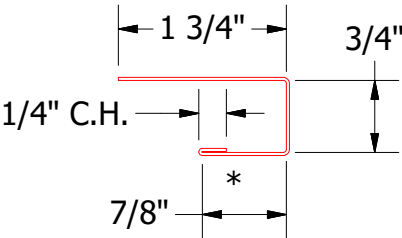
Note: * denotes color side.
Note: stainless steel pop rivets maybe needed along with VHB tape for longer panels.

01				8/30/2021				Changed Pop Rivet to VHB Tape				KRK			
REV. NO.				DATE				DESCRIPTION OF REVISION				BY APP			
DWG. NO.				DR				DATE				12/27/2018			
MATERIAL				APP				DATE				SCALE			
SH. SIZE				B				X:X							


Horizontal Panel



Angle Trim



J Channel

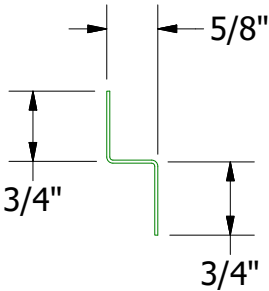
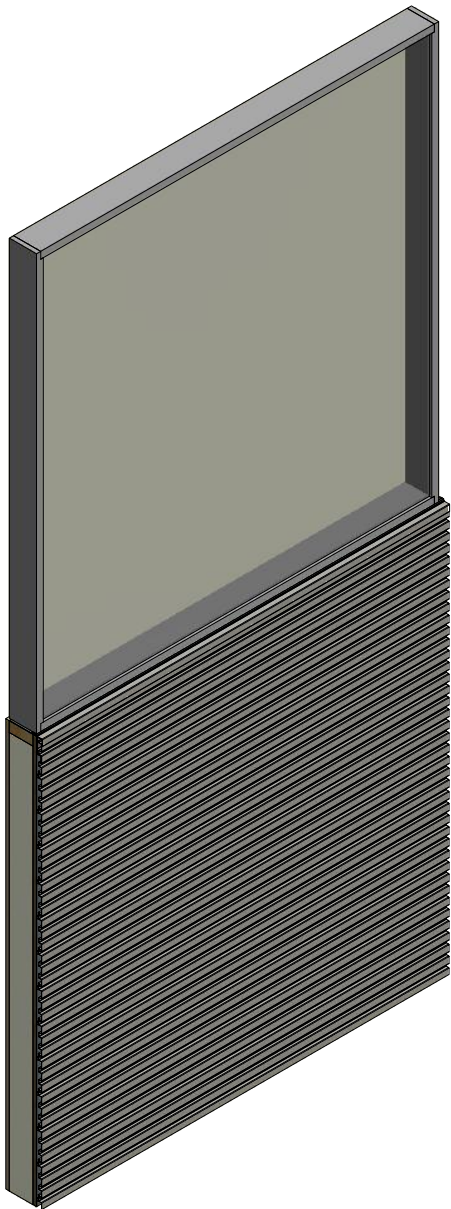
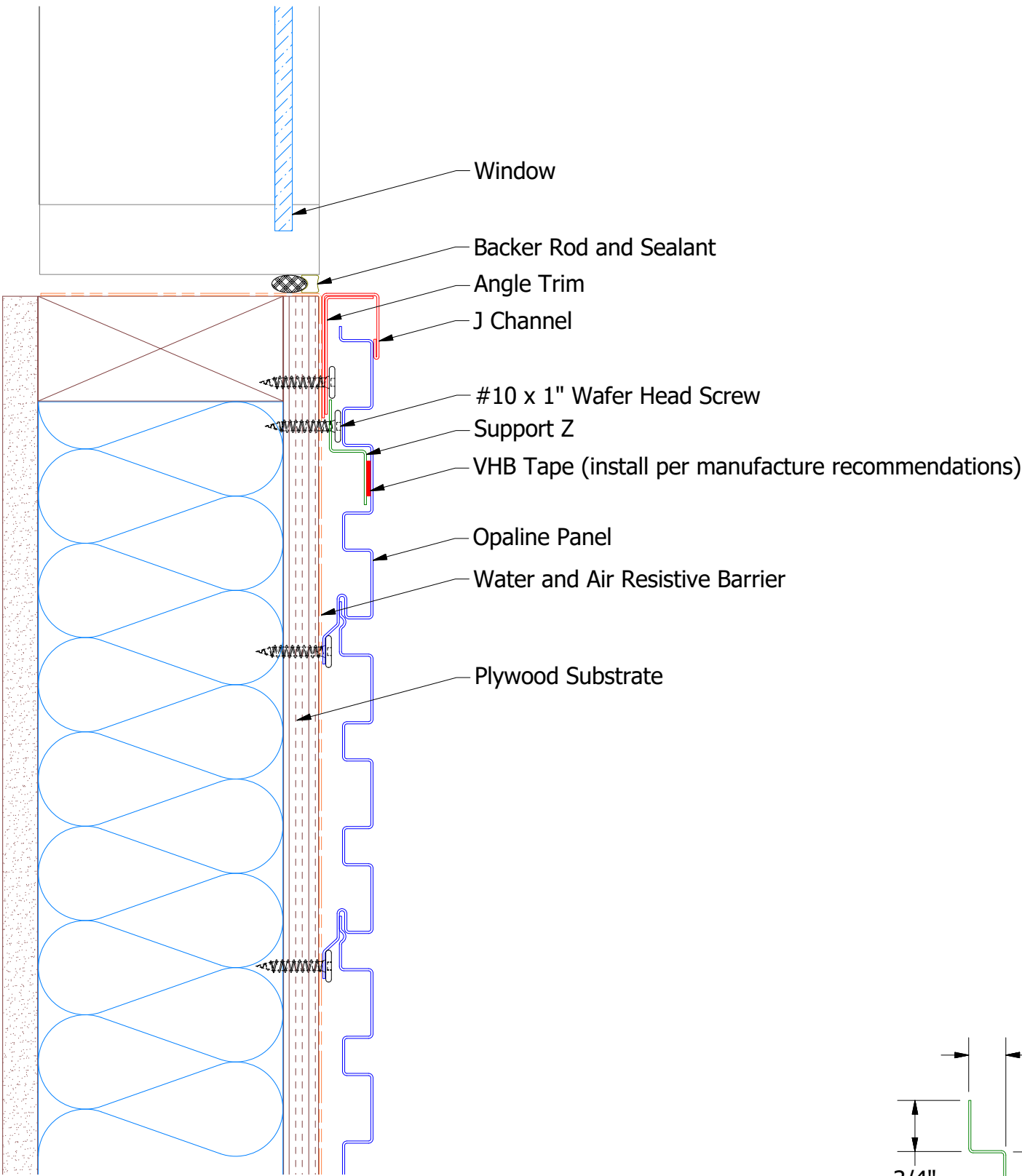


ATAS INTERNATIONAL, INC
Allentown PA
610-395-8445
Mesa AZ
480-558-7210

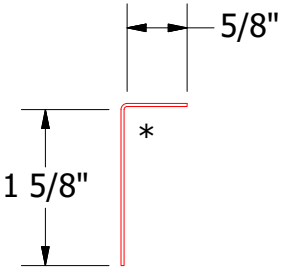
TITLE Opaline Existing Jamb Window Detail			
DWG. NO.		DR DMR	DATE 12/31/2018
MATERIAL		APP	DATE
REV. NO.	DATE	DESCRIPTION OF REVISION	BY APP
SH. SIZE B		SCALE X:X	

Note: * denotes color side.

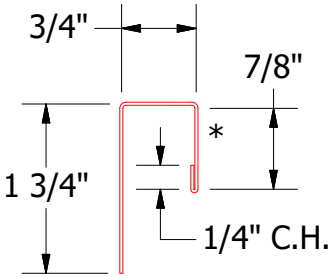
Horizontal Panel



OPA681 - Support Z



OPA680 - Angle Trim

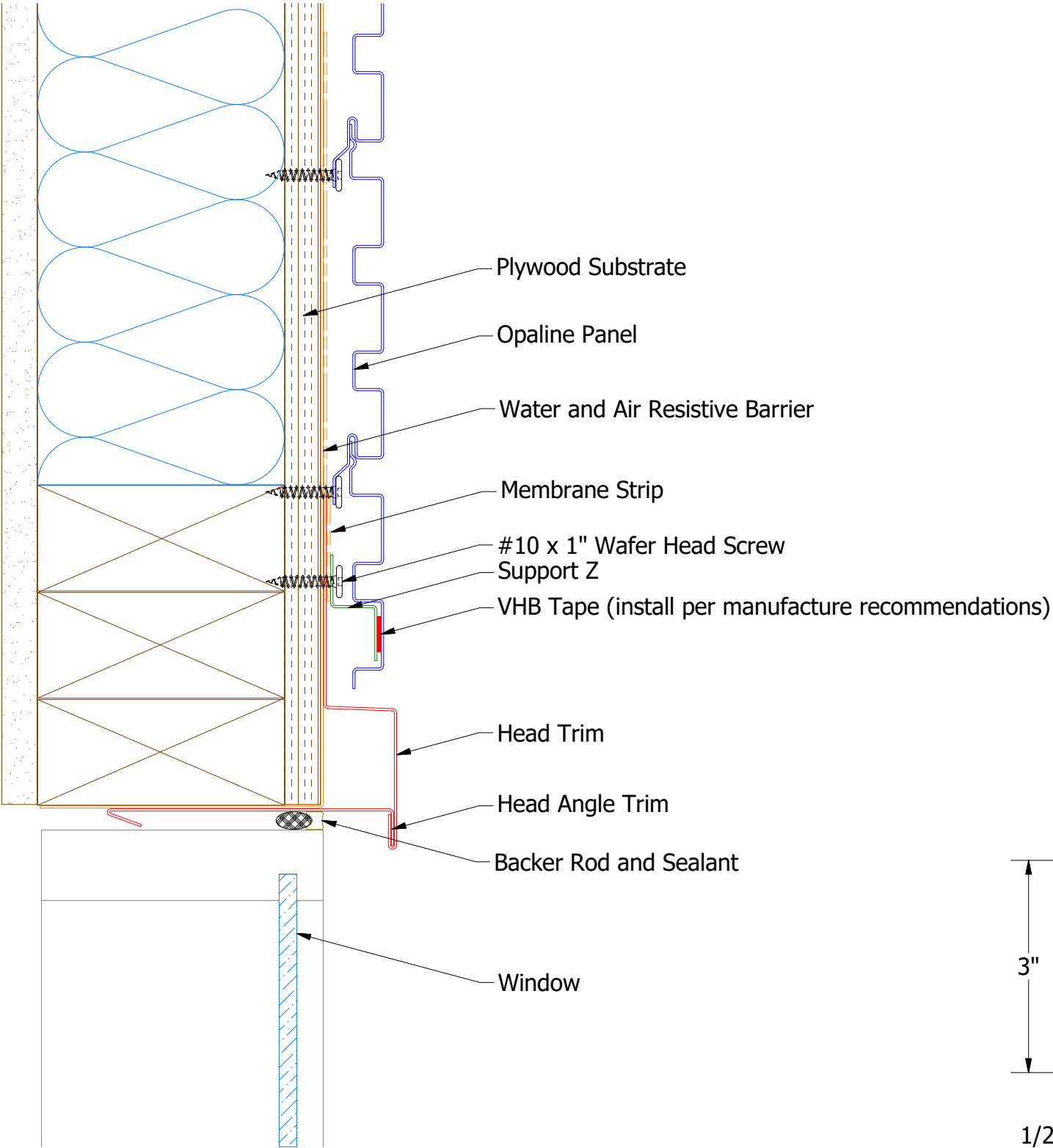


OPA034 - J Channel

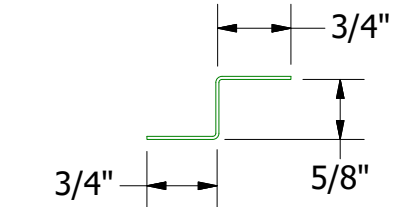
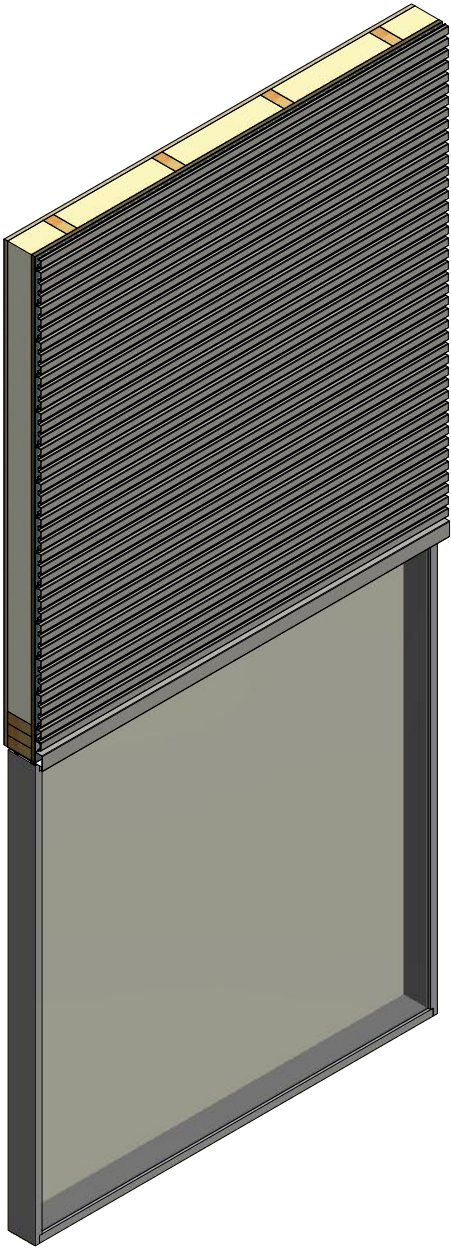
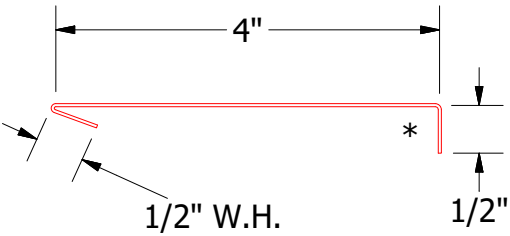
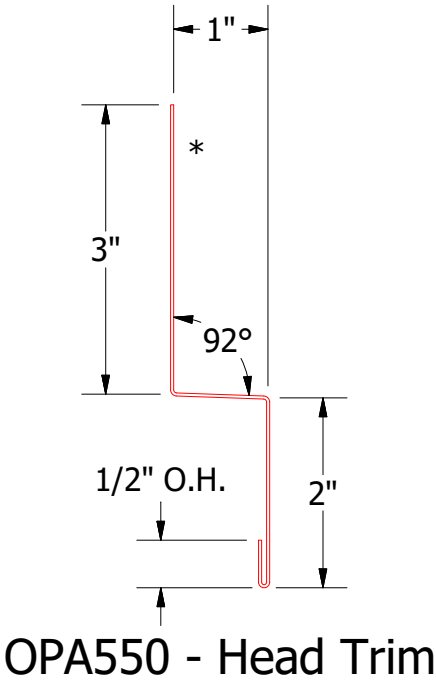
Note: * denotes color side.
Note: Stainless Steel Pop Rivets maybe needed along with VHB Tape for longer Panels.

						TITLE	
						Opaline Existing Window Sill Detail	

Horizontal Panel



Note: * denotes color side.
Note: stainless steel pop rivets maybe needed along with VHB tape for longer panels.

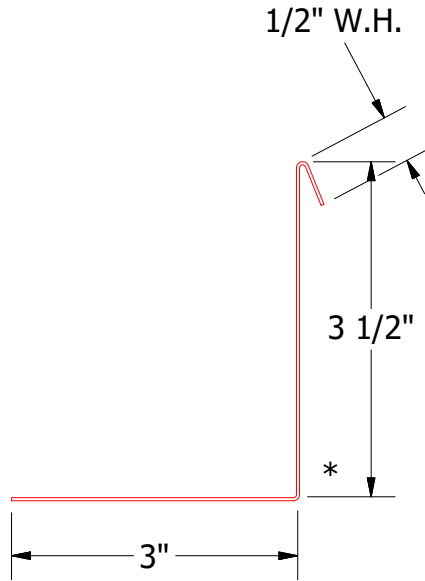
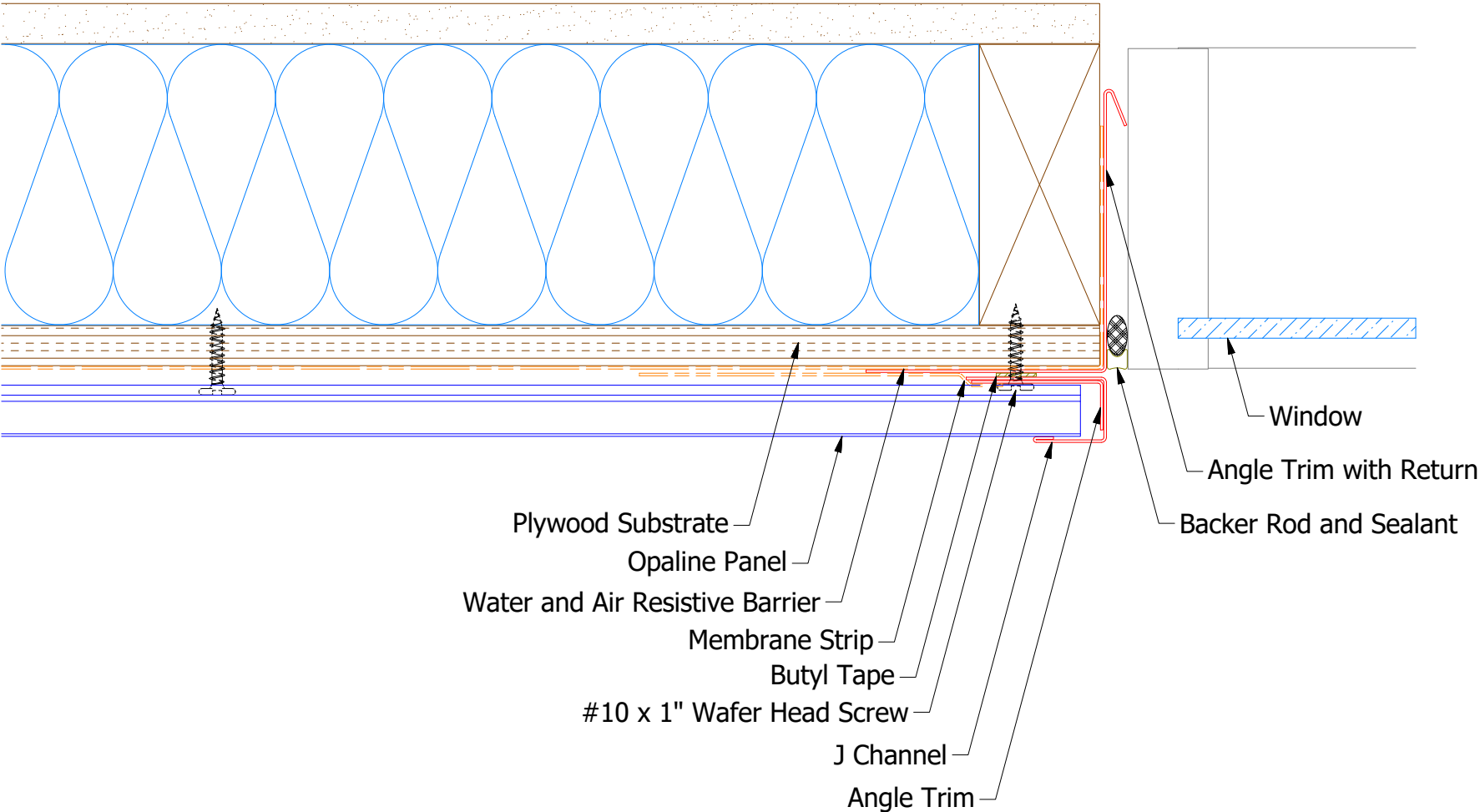
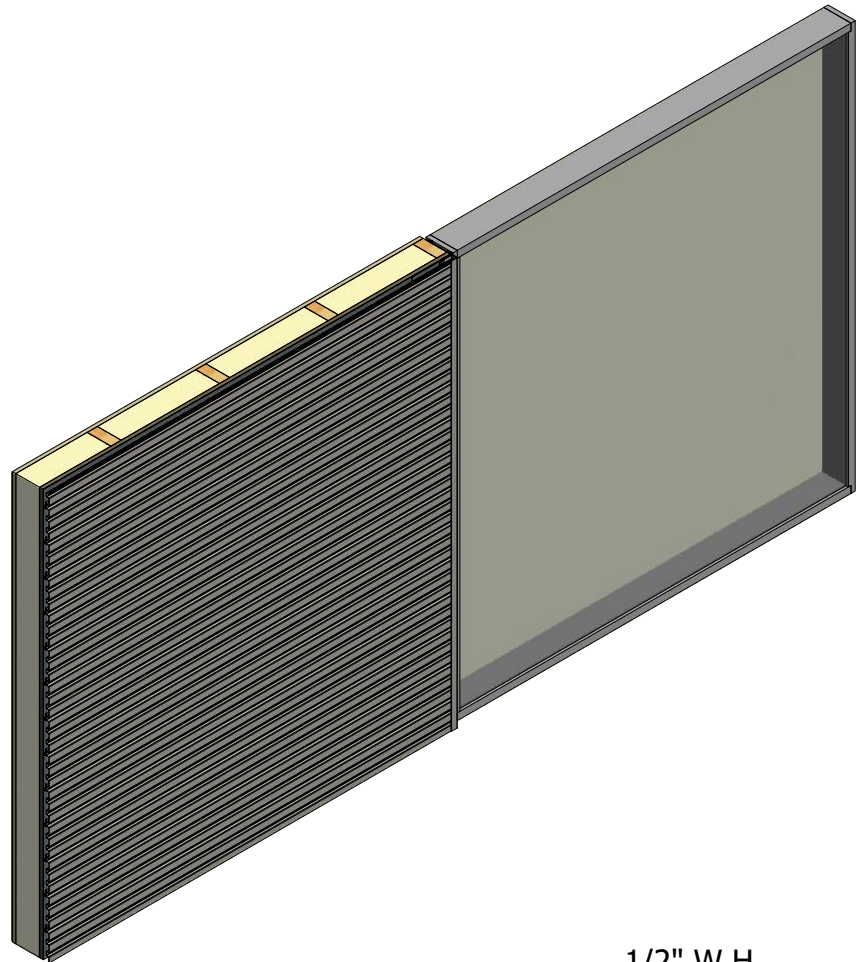


OPA690 - Head Angle Trim

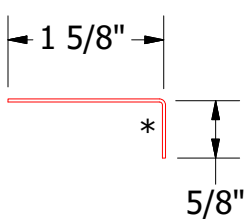
OPA681 - Support Z

TITLE				Opaline Head Detail			
DWG. NO.		DR		DATE		DATE	
01		8/27/2021		MBP		7/6/2016	
REV. NO.		DATE		DESCRIPTION OF REVISION		SCALE	
01		8/27/2021		Changed Pop Rivet to VHB Tape		X:X	
BY		APP		MATERIAL		SH. SIZE	
KRK						B	

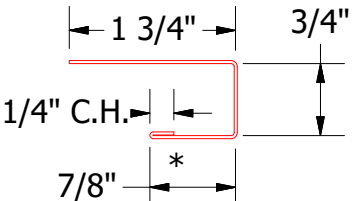
Horizontal Panel



OPA683 - Angle Trim With Return



OPA680 - Angle Trim



OPA034 - J Channel

Note: * denotes color side.

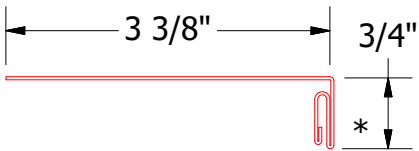
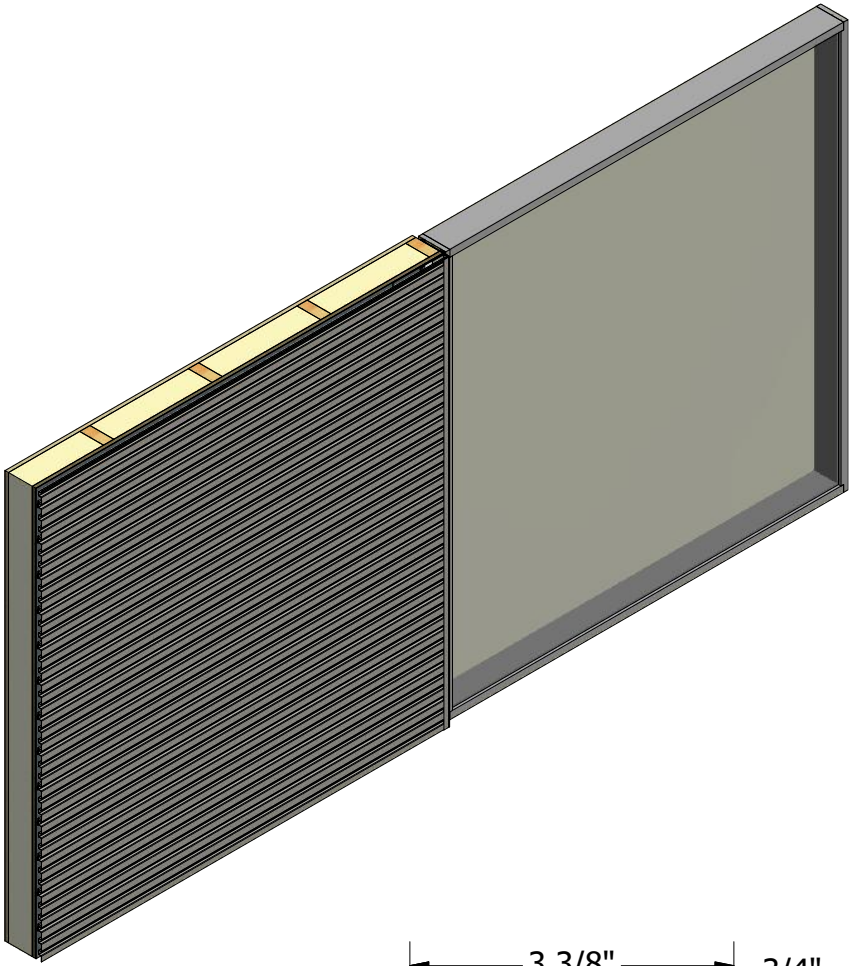
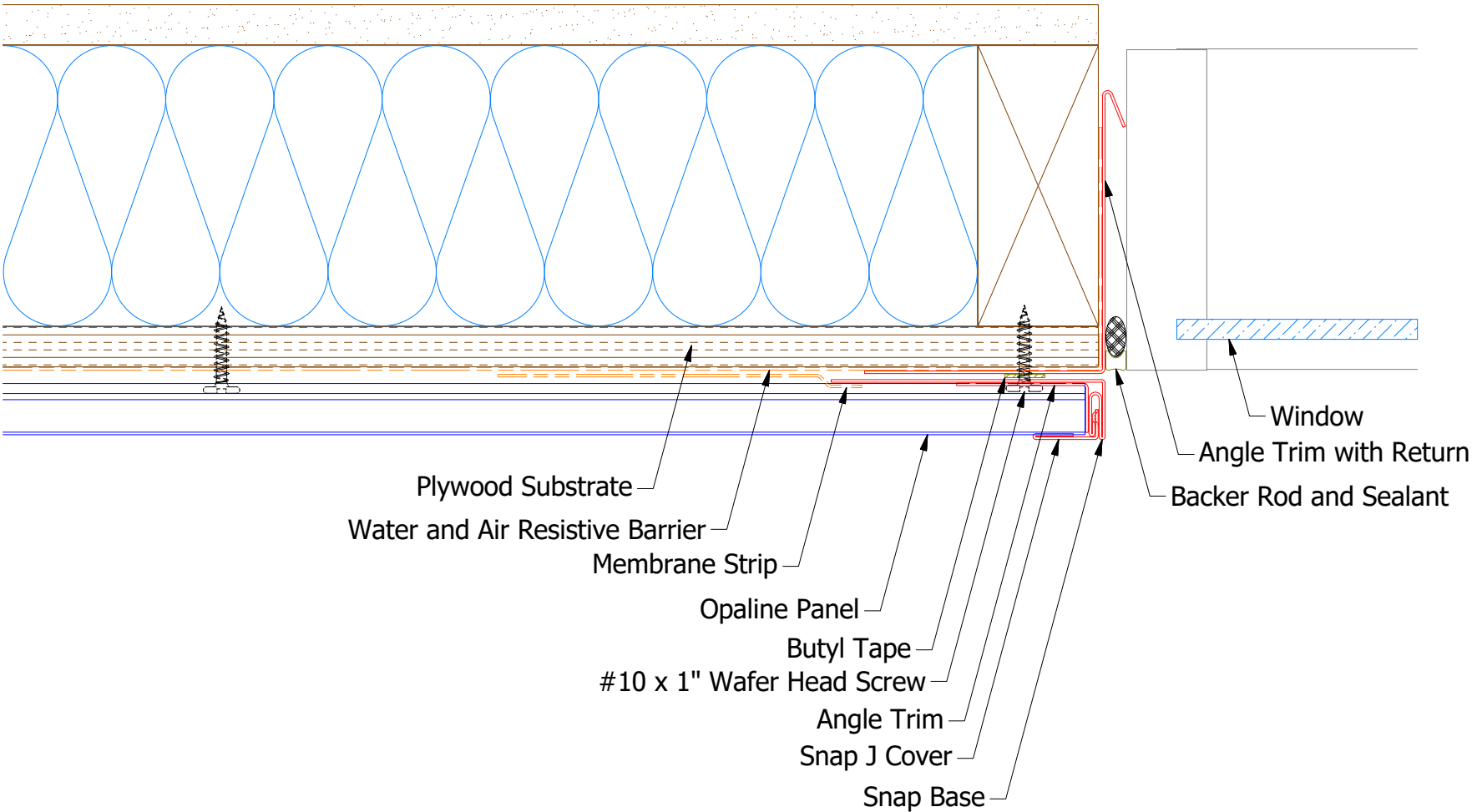
REV. NO.		DATE	DESCRIPTION OF REVISION	BY	APP	TITLE		DR	MBP	DATE
						DWG. NO.		APP	DAS	DATE
						MATERIAL		SH. SIZE	B	SCALE
										X:X



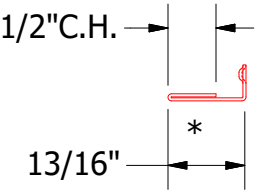
ATAS INTERNATIONAL, INC
Allentown PA
610-395-8445
Mesa AZ
480-558-7210

Opaline Jamb Detail

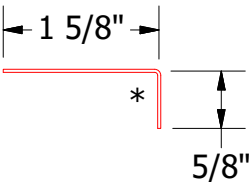
Horizontal Panel - Alternate



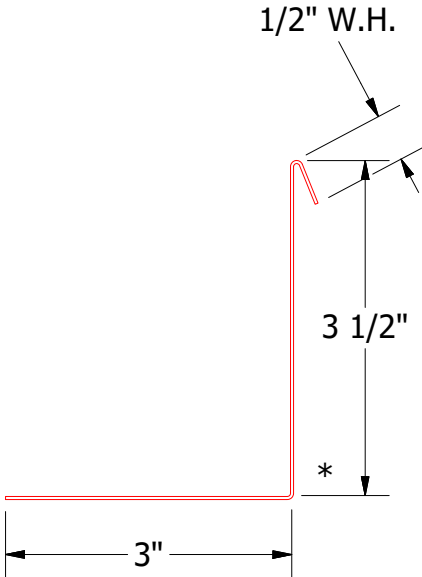
OPA039 - Snap J Base



UNS078 - Snap J Cover




OPA680 - Angle Trim



OPA683 - Angle Trim With Return

Note: * denotes color side.

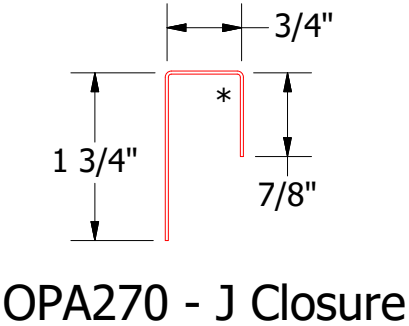
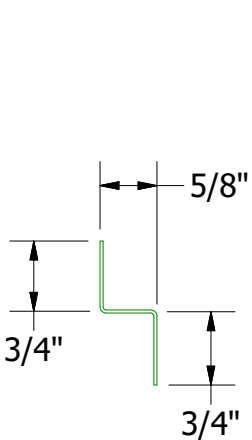
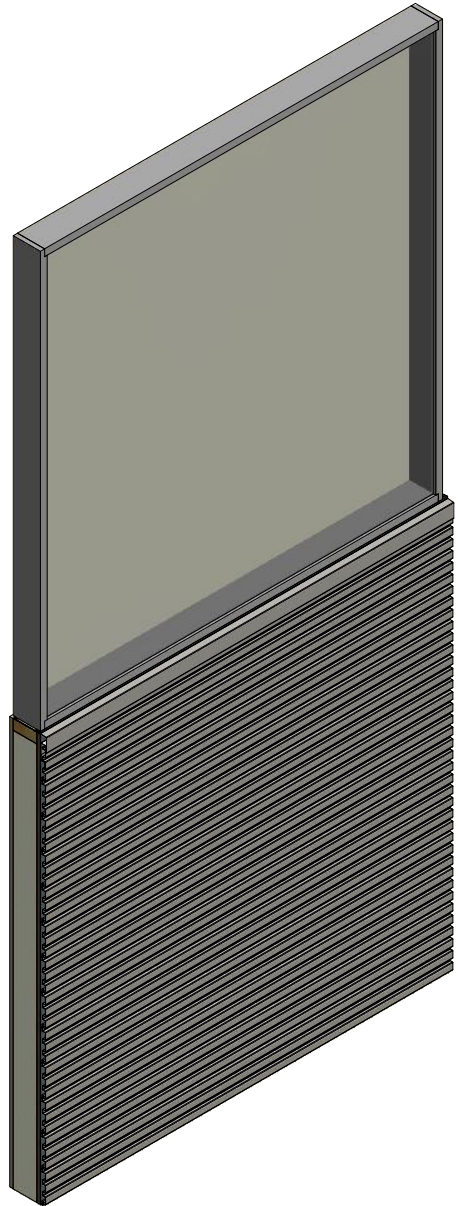
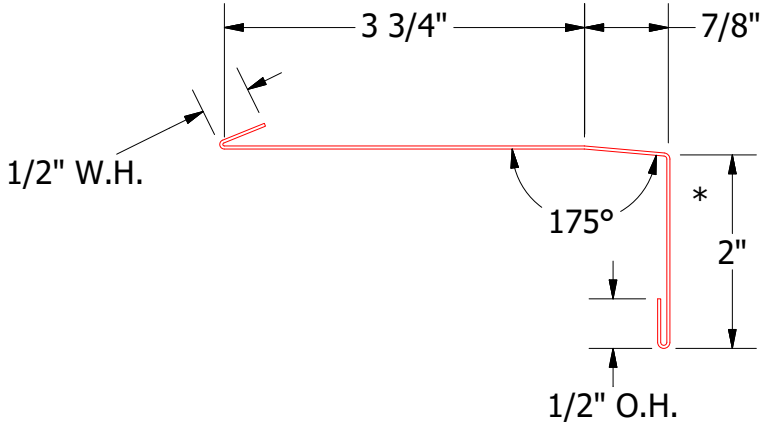
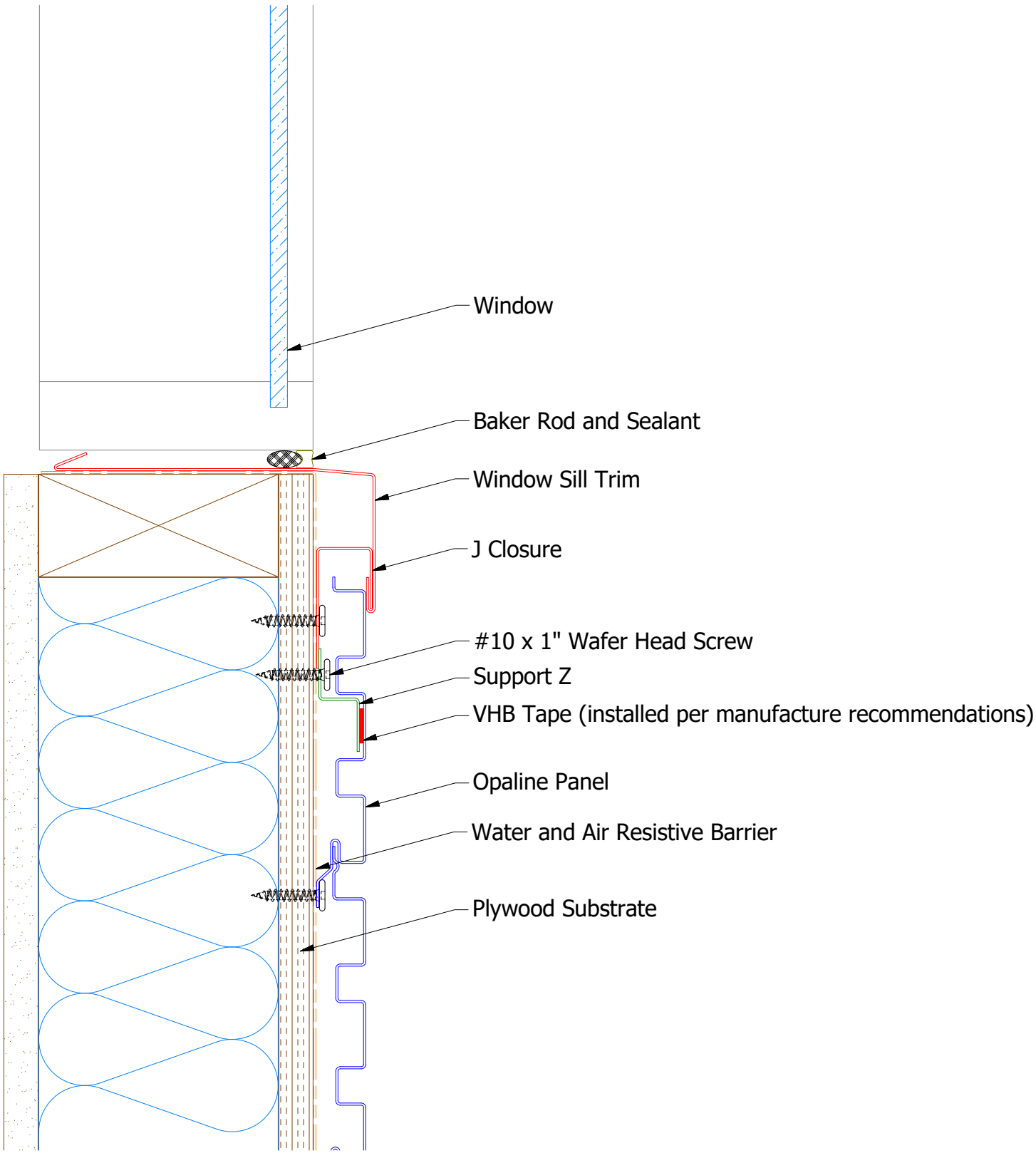


ATAS INTERNATIONAL, INC
Allentown PA
610-395-8445
Mesa AZ
480-558-7210

TITLE Opaline Jamb Alt Detail			
DWG. NO.	DR MBP	DATE	7/6/2016
APP DAS	DATE	7/28/16	
MATERIAL	SH. SIZE	B	SCALE X:X

REV. NO.	DATE	DESCRIPTION OF REVISION	BY	APP

Horizontal Panel



Note: * denotes color side.
Note: stainless steel pop rivets maybe needed along with VHB tape for longer panels.

				ATAS INTERNATIONAL, INC Allentown PA 610-395-8445 Mesa AZ 480-558-7210			
				TITLE Opaline Window Sill Detail			
				DWG. NO.		DR MBP	DATE 7/7/2016
						APP DAS	DATE 7/28/16
01	8/31/2021	Changed Pop Rivets to VHB Tape	KRK	MATERIAL		SH. SIZE B	SCALE X:X
REV. NO.	DATE	DESCRIPTION OF REVISION	BY	APP			