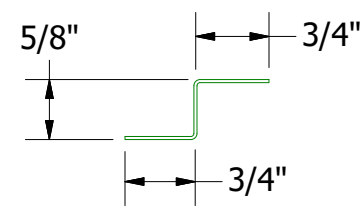
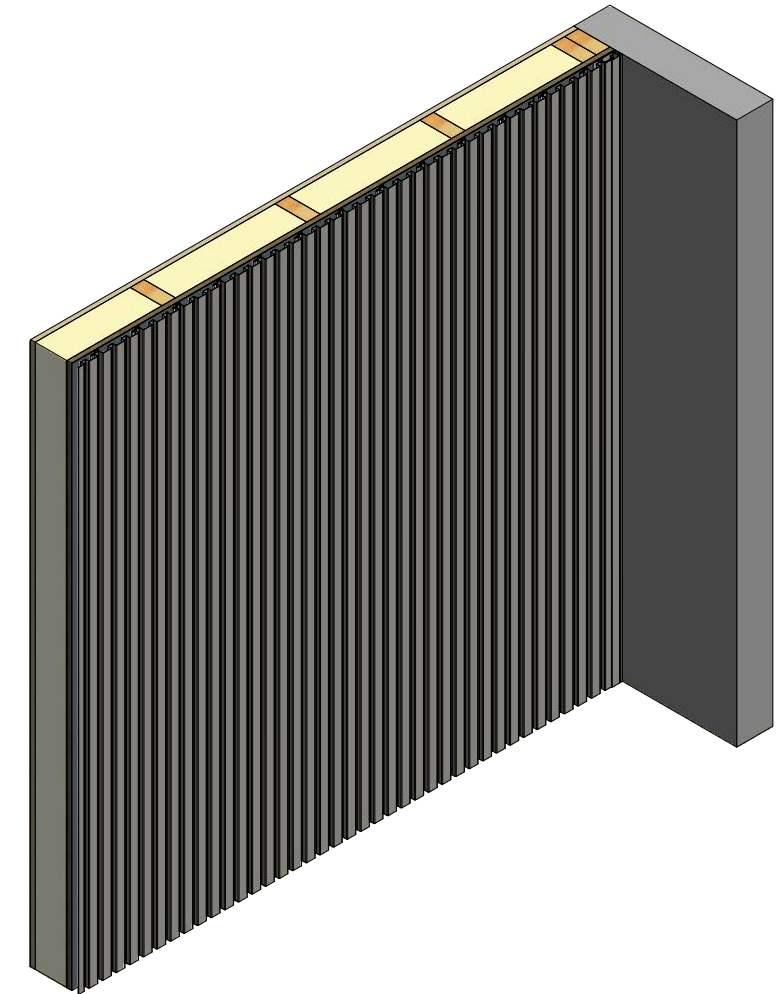
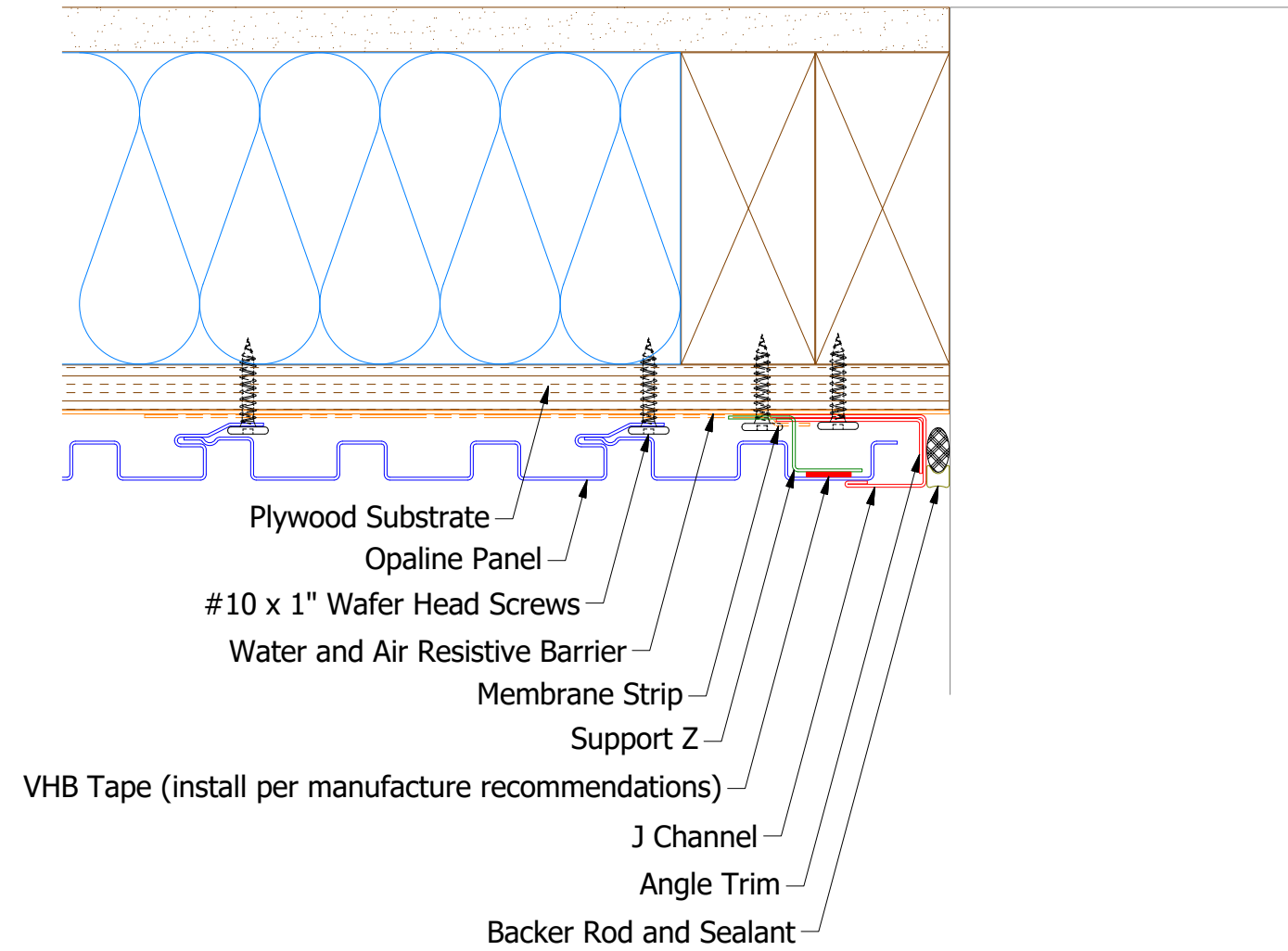
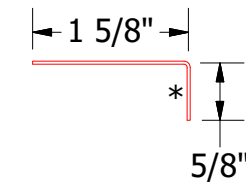


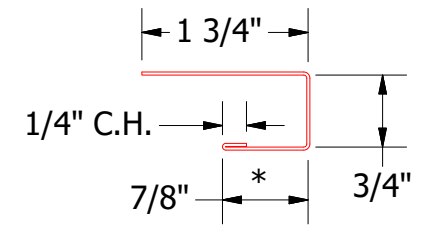
Vertical Panel



OPA681 - Support Z



OPA680 - Angle Trim



OPA034 - J Channel

Note: * denotes color side.
 Note: Stainless Steel Pop Rivets may be needed along with VHB Tape for longer Panels.

REV. NO.		DATE	DESCRIPTION OF REVISION	BY	APP	TITLE	
01	8/27/2021		Changed Pop Rivets to VHB Tape	KRK		Opaline Endwall Detail	
DWG. NO.						DR	DATE
MATERIAL						MBP	7/6/2016
						DAS	DATE
						SH. SIZE	SCALE
						B	X:X


ATAS INTERNATIONAL, INC
 Allentown PA
 610-395-8445
 Mesa AZ
 480-558-7210