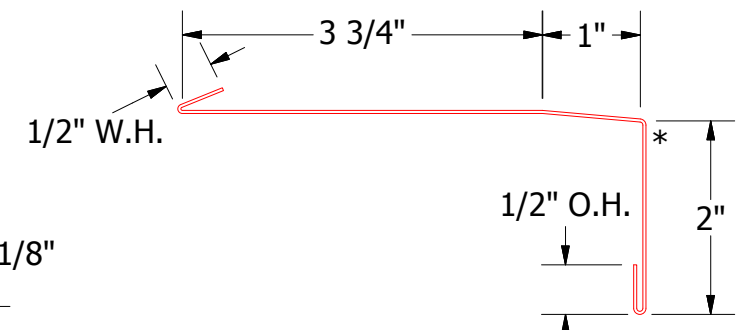
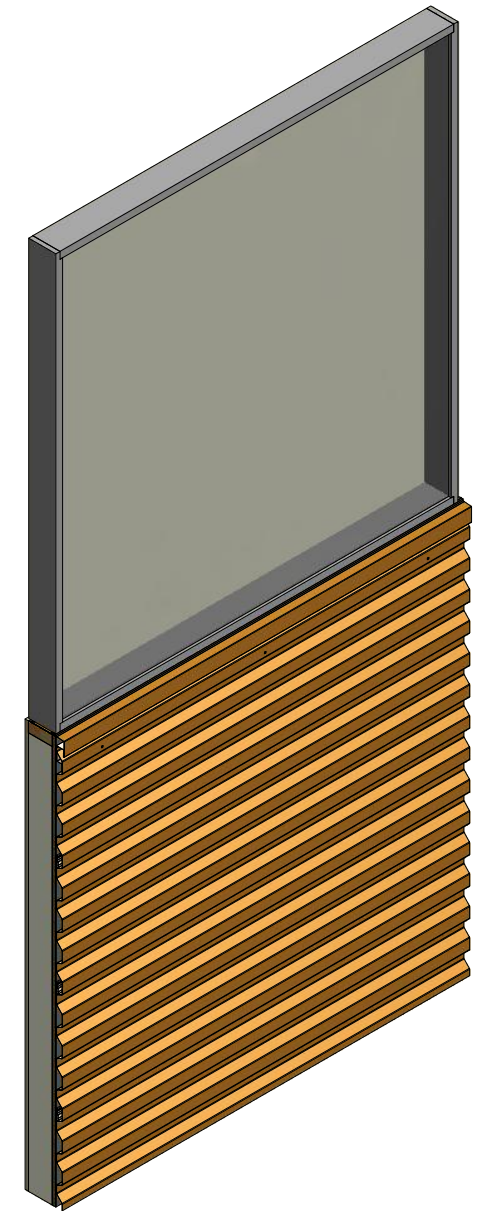
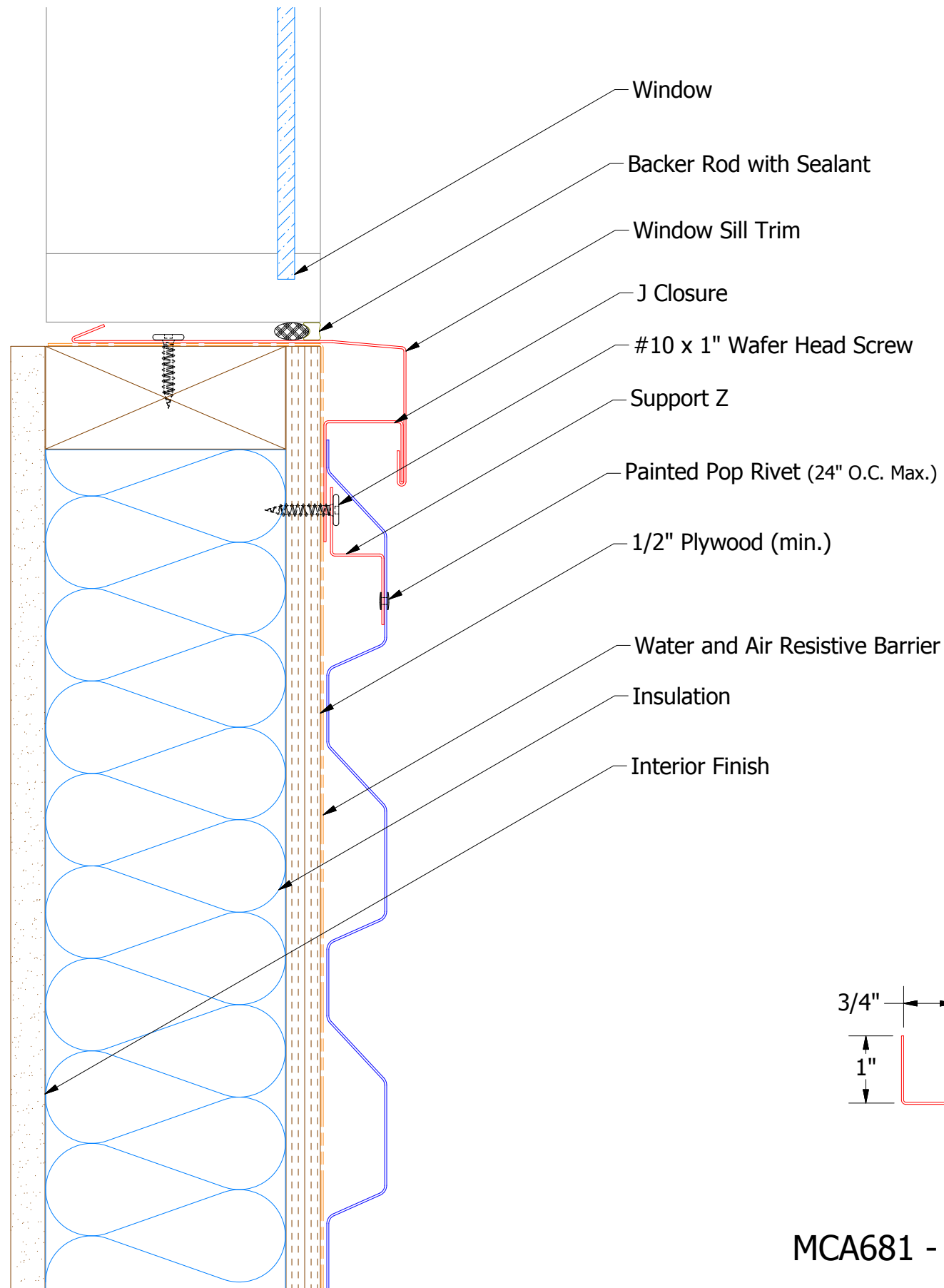
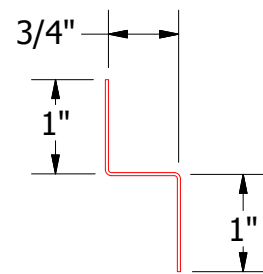


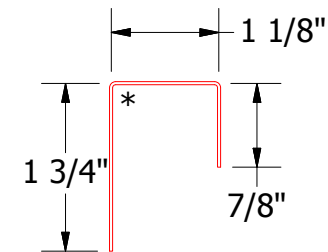
Horizontal Panel



MCA670 - Window Sill Trim



MCA681 - Support Z



MCA270 - J Closure

ATAS ATAS INTERNATIONAL, INC
 Allentown PA
 610-395-8445
 Mesa AZ
 480-558-7210

TITLE Rigid Wall Window Sill Detail

REV. NO.	DATE	DESCRIPTION OF REVISION	BY	APP	DWG. NO.	DR MBP	DATE 7/5/2016
						APP DAS	DATE 7/25/16
						SH. SIZE B	SCALE X:X