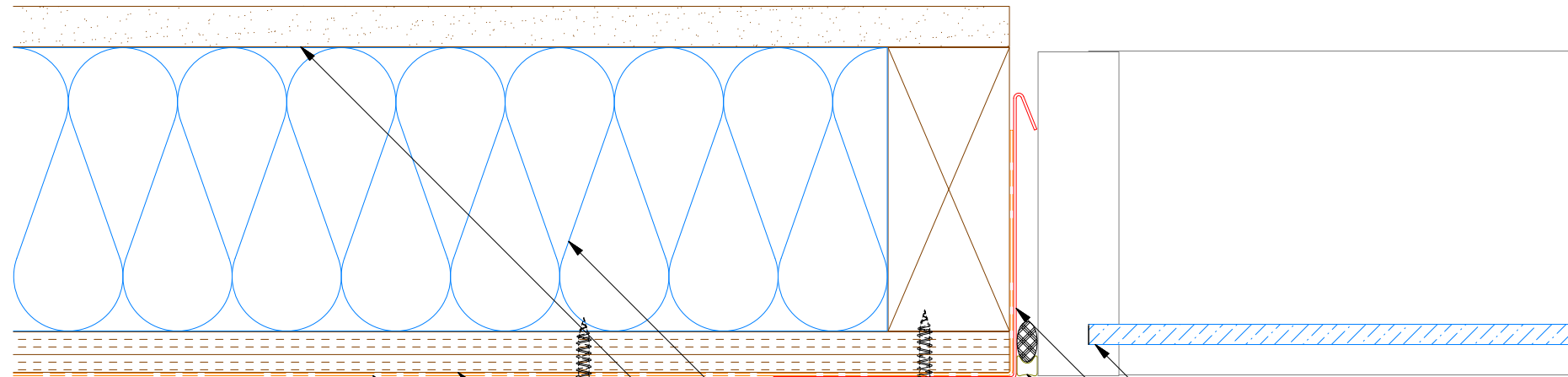
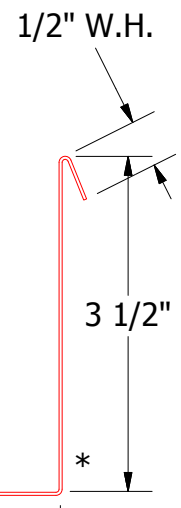
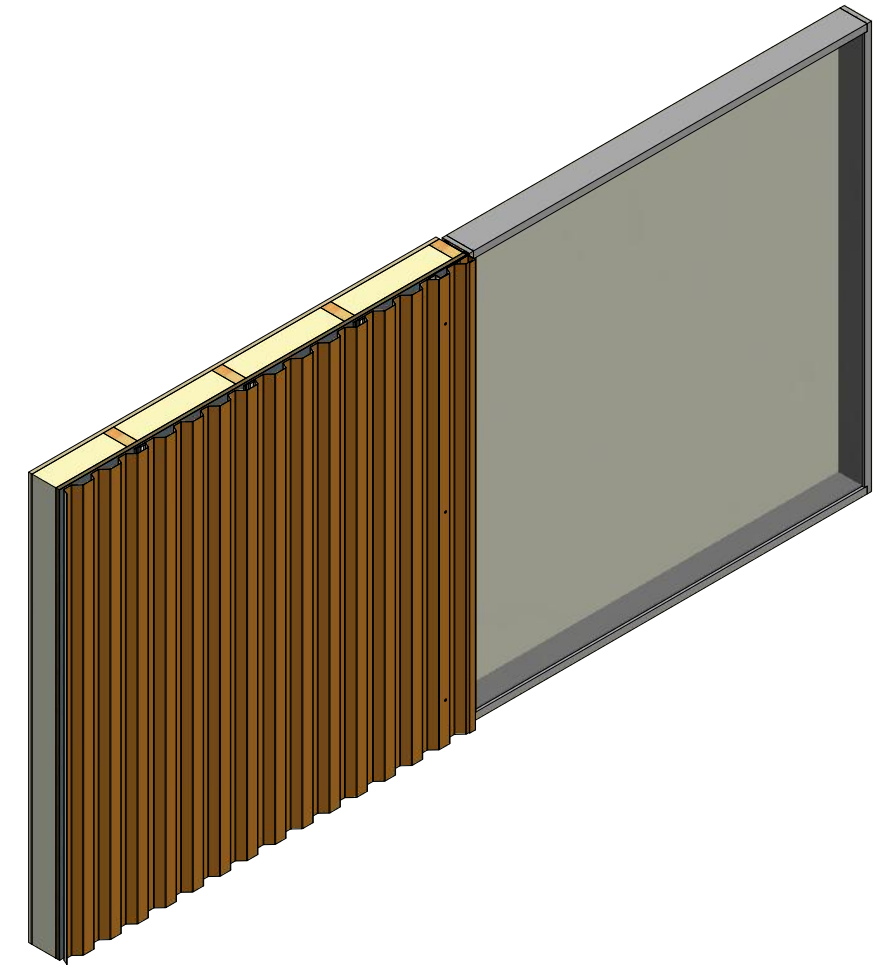


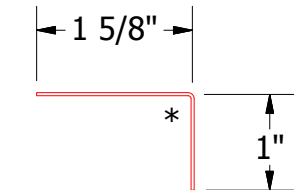
Vertical Panel



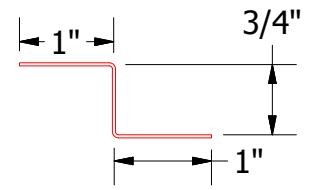
- Window
- Angle Trim With Return
- Backer Rod and Sealant
- Angle Trim
- #10 x 1" Wafer Head Screw
- J Channel
- Membrane Strip over J Channel and Angle Trim
- Rigid Wall Panel
- Insulation
- Interior Finish
- Painted Pop Rivet (24" O.C. Max.)
- Support Z
- 1/2" Plywood (min.)
- Water and Air Resistive Barrier



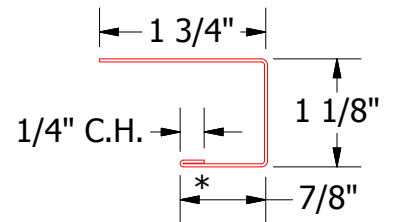
MCA683 - Angle Trim With Return



MCA680 - Angle Trim



MCA681 - Support Z



MCA118 - J Channel

ATAS ATAS INTERNATIONAL, INC
 Allentown PA
 610-395-8445
 Mesa AZ
 480-558-7210

| | | | | | | | |
|----------|------|-------------------------|----|------------------------|--|---------|--|
| TITLE | | | | Rigid Wall Jamb Detail | | | |
| DWG. NO. | | DR | | DATE | | DATE | |
| | | MBP | | 7/5/2016 | | 7/25/16 | |
| MATERIAL | | APP | | DAS | | SCALE | |
| | | SH. SIZE | | B | | X:X | |
| REV. NO. | DATE | DESCRIPTION OF REVISION | BY | APP | | | |