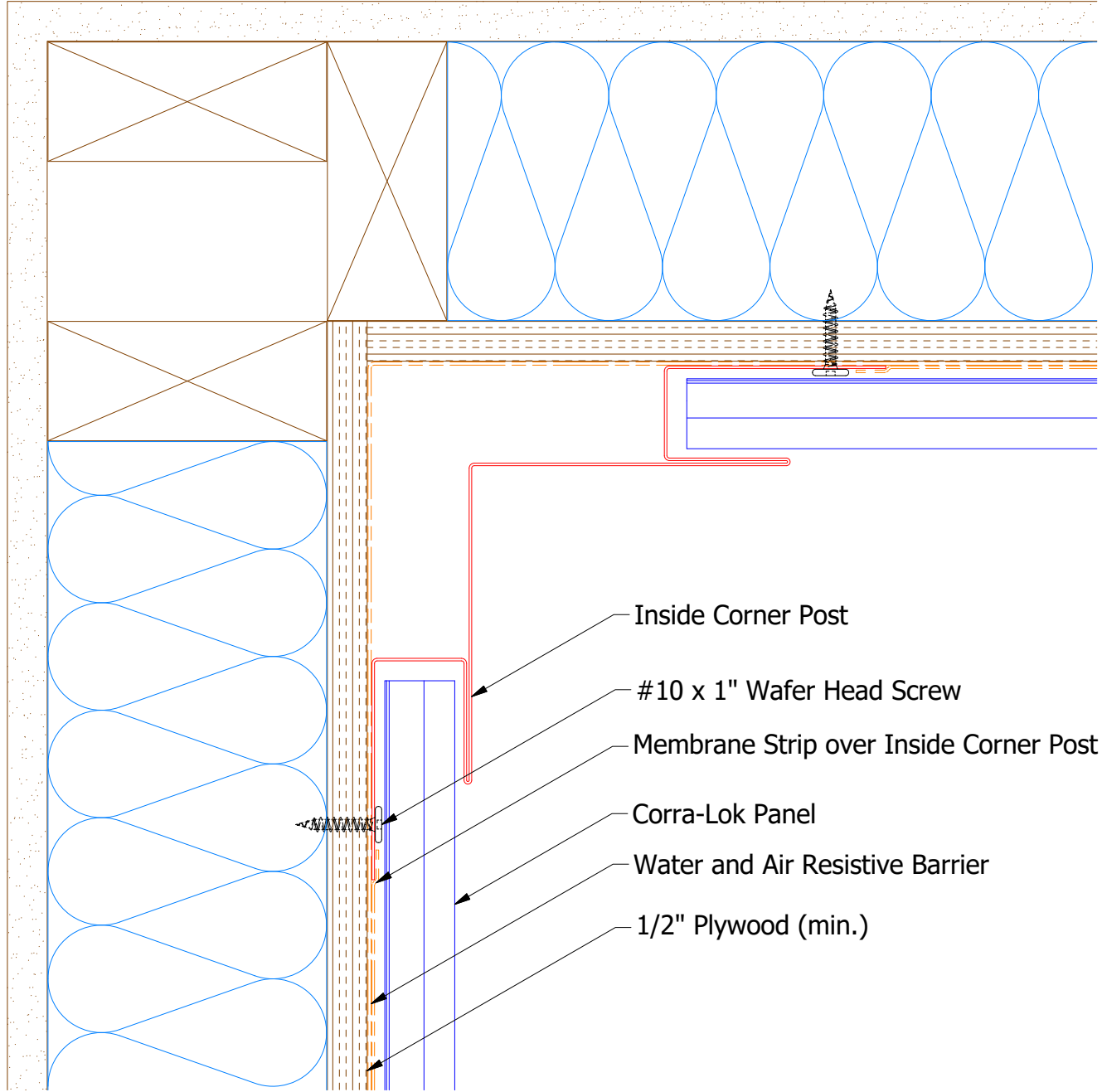
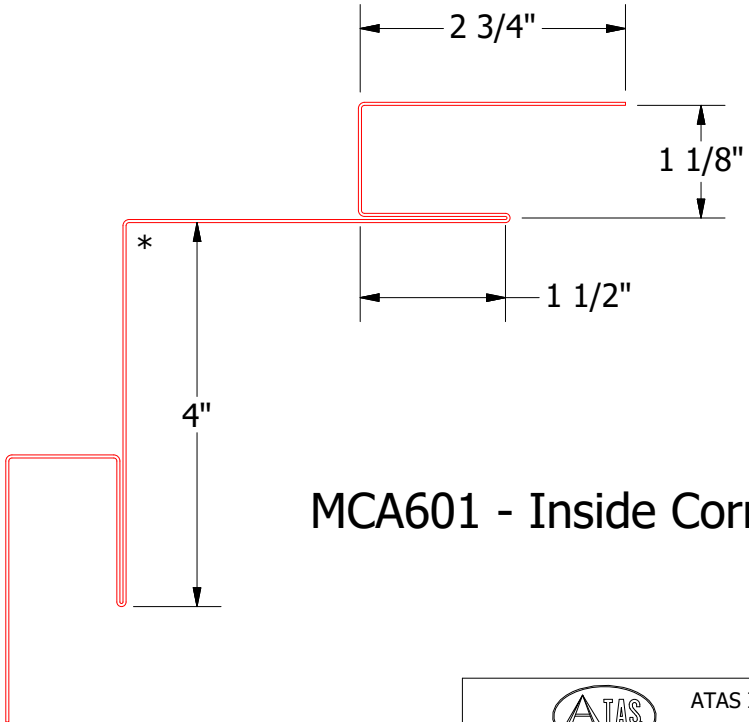
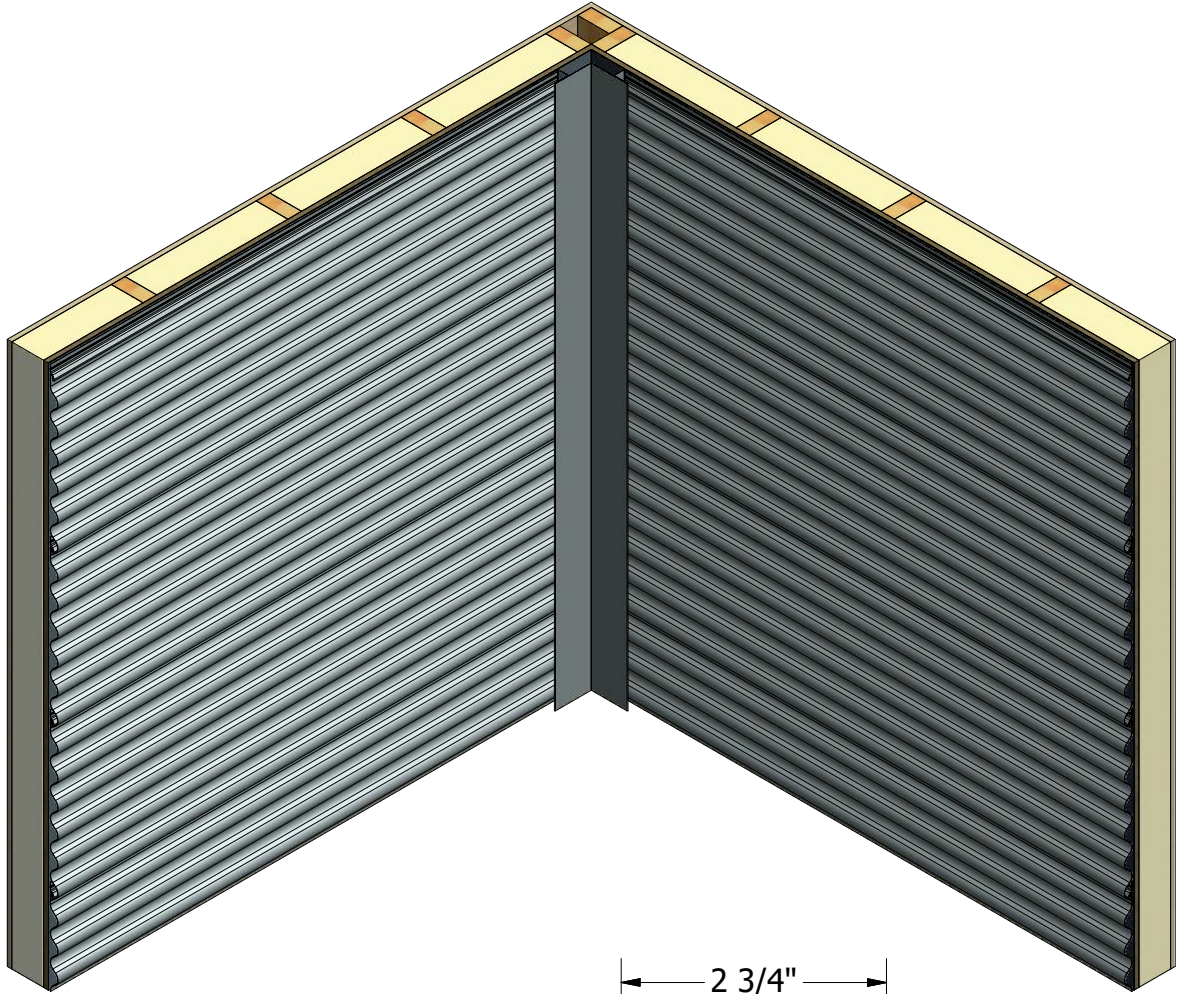


Horizontal Panel




- Inside Corner Post
- #10 x 1" Wafer Head Screw
- Membrane Strip over Inside Corner Post
- Corra-Lok Panel
- Water and Air Resistive Barrier
- 1/2" Plywood (min.)



MCA601 - Inside Corner Post

Note: * denotes color side.

 ATAS INTERNATIONAL, INC Allentown PA 610-395-8445 Mesa AZ 480-558-7210		TITLE Corra-Lok Inside Corner Detail	
		DWG. NO.	DR DMR APP DAS
REV. NO.	DATE	DESCRIPTION OF REVISION	BY APP SH. SIZE B SCALE X:X
