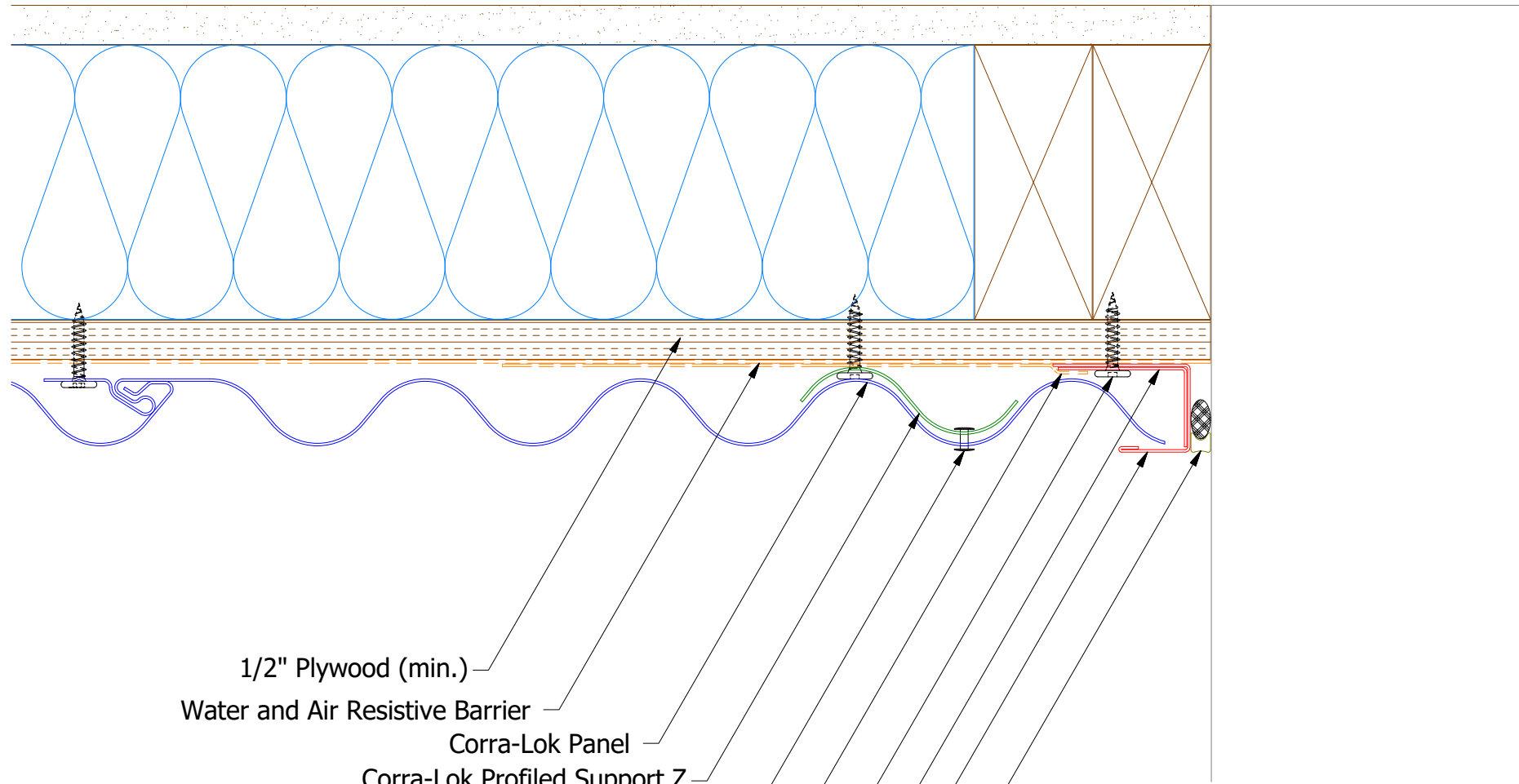
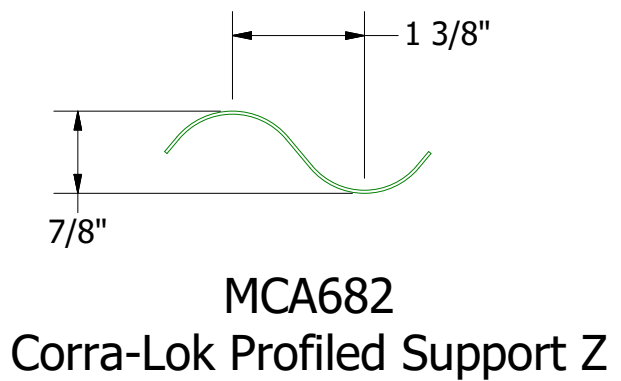


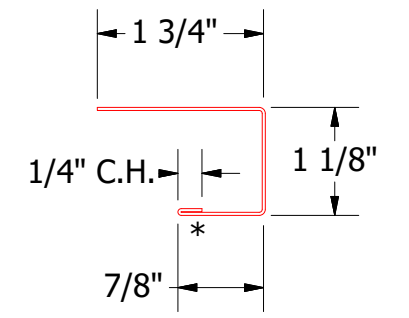
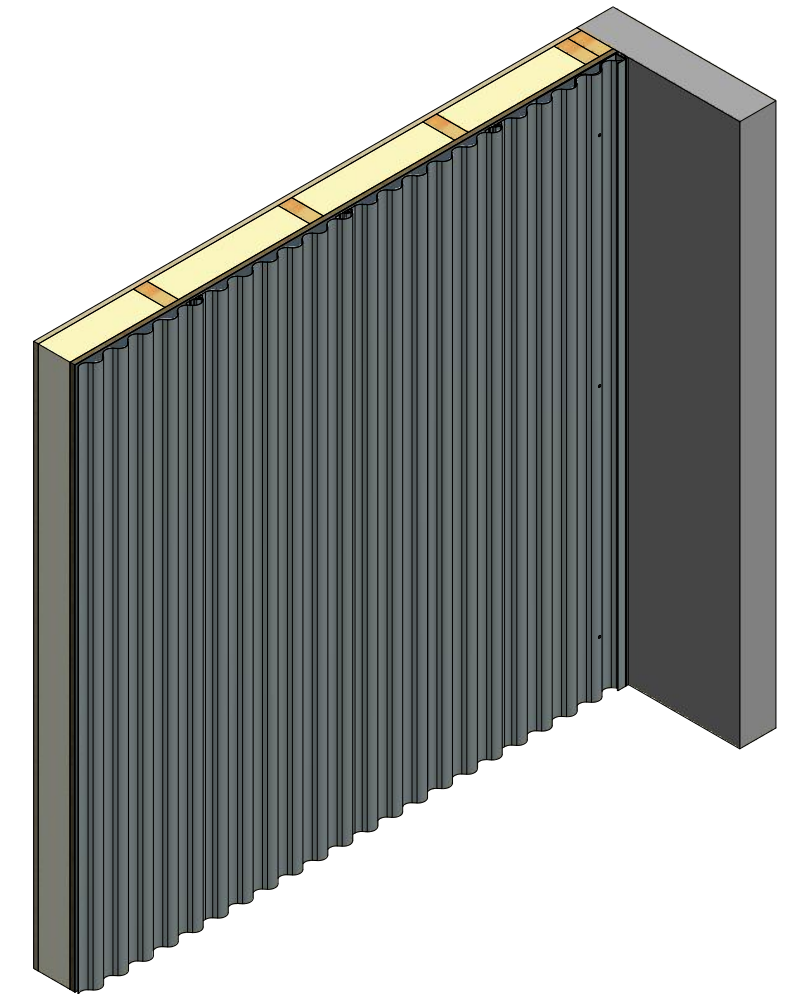
Vertical Panel



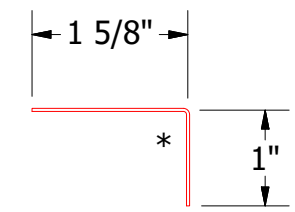
- 1/2" Plywood (min.)
- Water and Air Resistive Barrier
- Corra-Lok Panel
- Corra-Lok Profiled Support Z
- S.S. Painted Pop Rivet (24" O.C. MAX.)
- Membrane Strip over Angle Trim and J Channel
- #10 x 1" Wafer Head Screw
- Angle Trim
- J Channel
- Backer Rod and Sealant



MCA682
Corra-Lok Profiled Support Z



MCA118 - J Channel



MCA680 - Angle Trim

ATAS ATAS INTERNATIONAL, INC
 Allentown PA
 610-395-8445
 Mesa AZ
 480-558-7210

TITLE				Corra-Lok Endwall Detail			
01	2/17/2020	Replaced Support Z with Corra-Lok Profiled Support Z	KRK	DR	DMR	DATE	6/16/2016
REV. NO.	DATE	DESCRIPTION OF REVISION	BY	APP	DATE	DATE	7/21/16
					SH. SIZE	SCALE	X:X