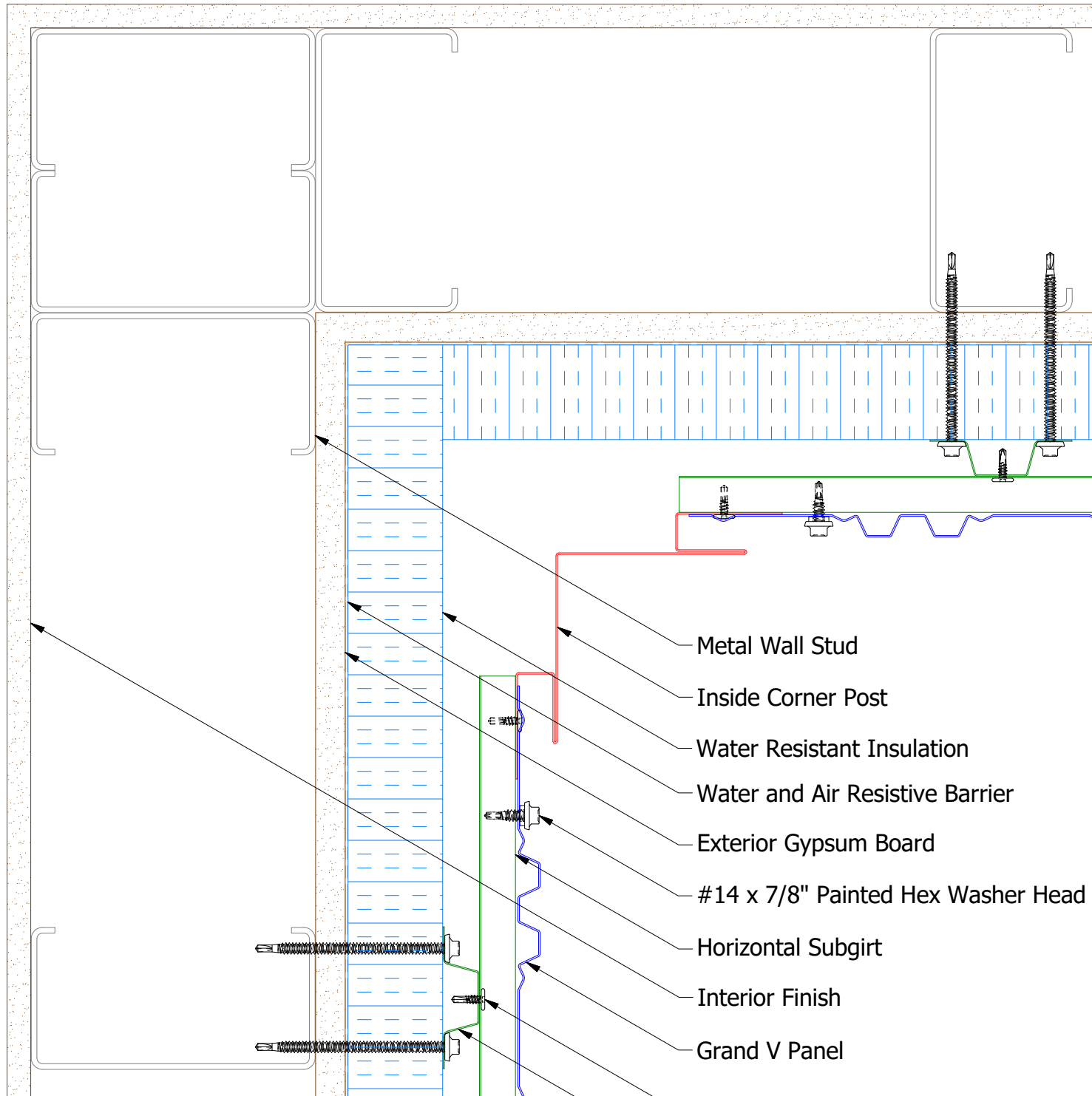
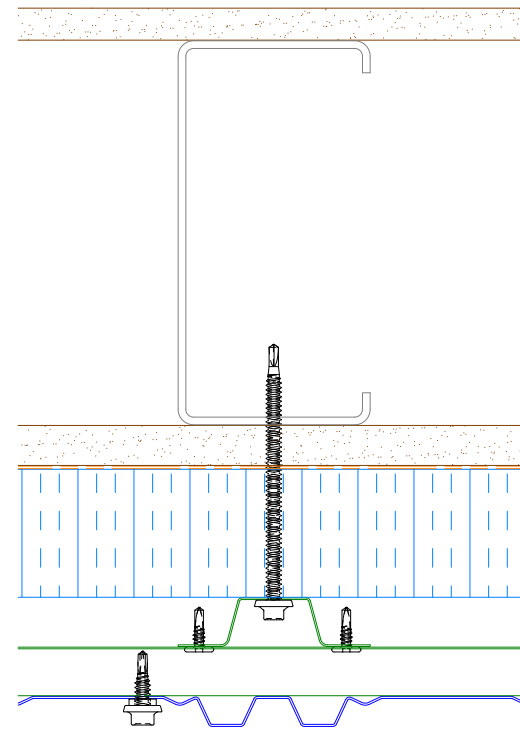


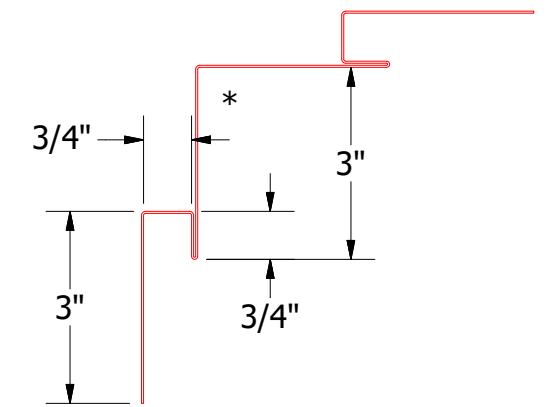
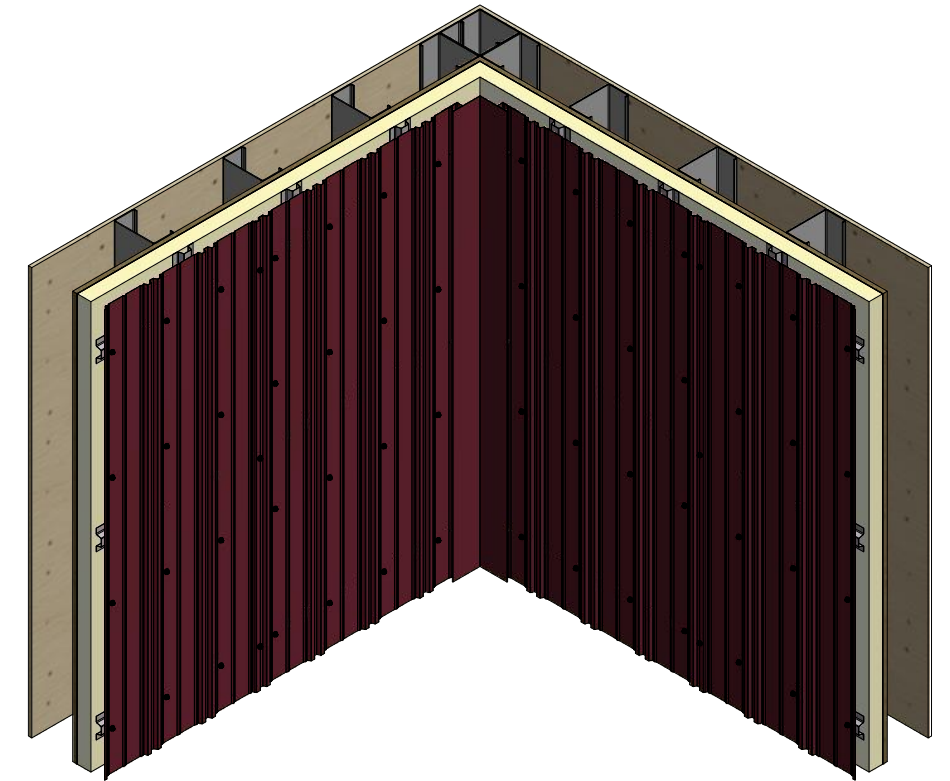
# Vertical Panel



- Metal Wall Stud
- Inside Corner Post
- Water Resistant Insulation
- Water and Air Resistive Barrier
- Exterior Gypsum Board
- #14 x 7/8" Painted Hex Washer Head Fastener with Washer
- Horizontal Subgirt
- Interior Finish
- Grand V Panel
- #10 x 5/8" Wafer Head Fastener
- Vertical Subgirt



Alternate Subgirt Orientation



BGA601-Inside Corner Post

**ATAS** ATAS INTERNATIONAL, INC  
 Allentown PA  
 610-395-8445  
 Mesa AZ  
 480-558-7210

TITLE  
**Grand V Panel Inside Corner Detail**

|          |      |                         |    |     |          |     |           |
|----------|------|-------------------------|----|-----|----------|-----|-----------|
| REV. NO. | DATE | DESCRIPTION OF REVISION | BY | APP | DWG. NO. | DR  | DATE      |
|          |      |                         |    |     |          | DMR | 9/23/2016 |
|          |      |                         |    |     | MATERIAL | APP | DATE      |
|          |      |                         |    |     | SH. SIZE | B   | SCALE X:X |