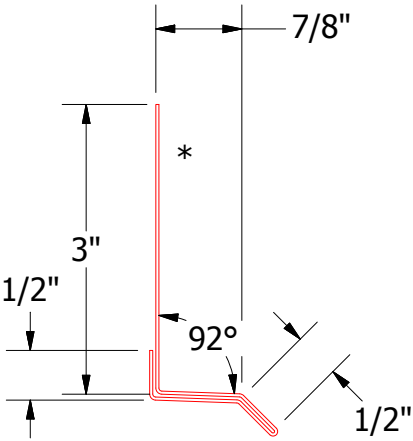
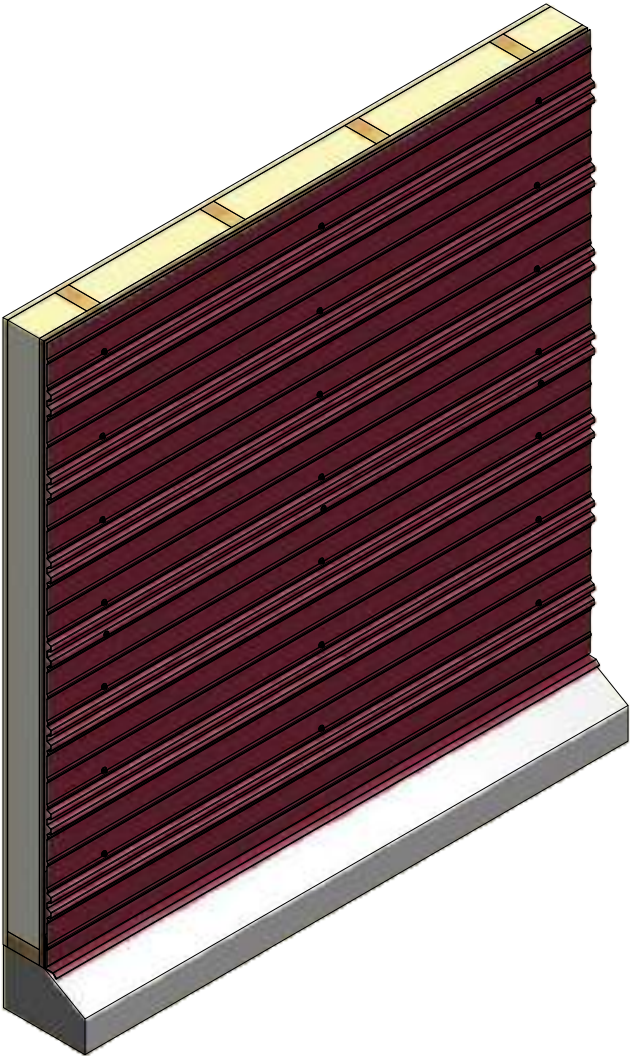
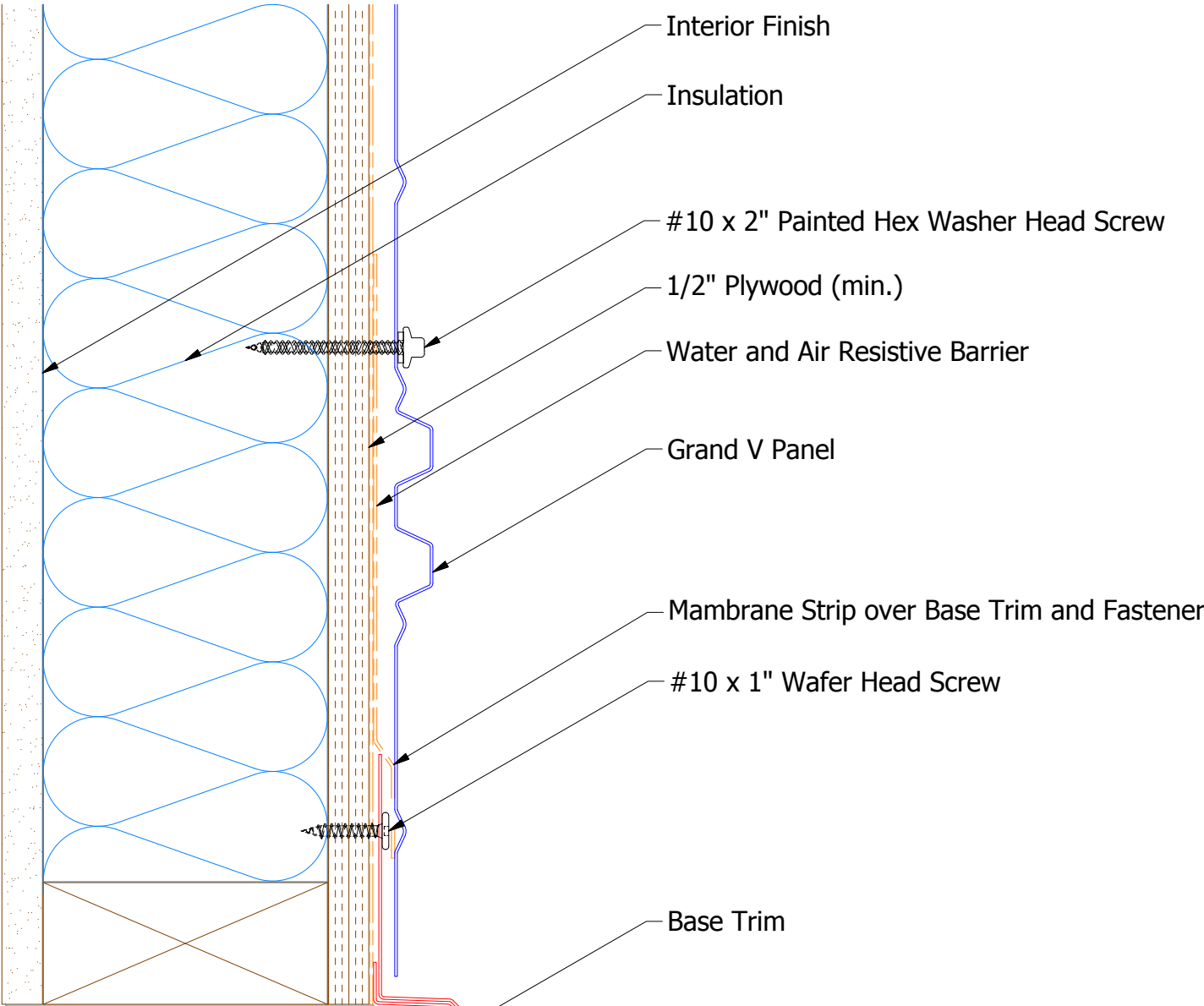


ATAS INTERNATIONAL, INC  
Allentown PA  
610-395-8445  
Mesa AZ  
480-558-7210

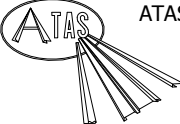
TITLE			
Grand V Panel Detail			
DWG. NO.		DR DMR	DATE 6/15/2016
		APP DAS	DATE 8/11/16
MATERIAL		SH. SIZE B	SCALE X:X

REV. NO.	DATE	DESCRIPTION OF REVISION	BY	APP

Horizontal Panel

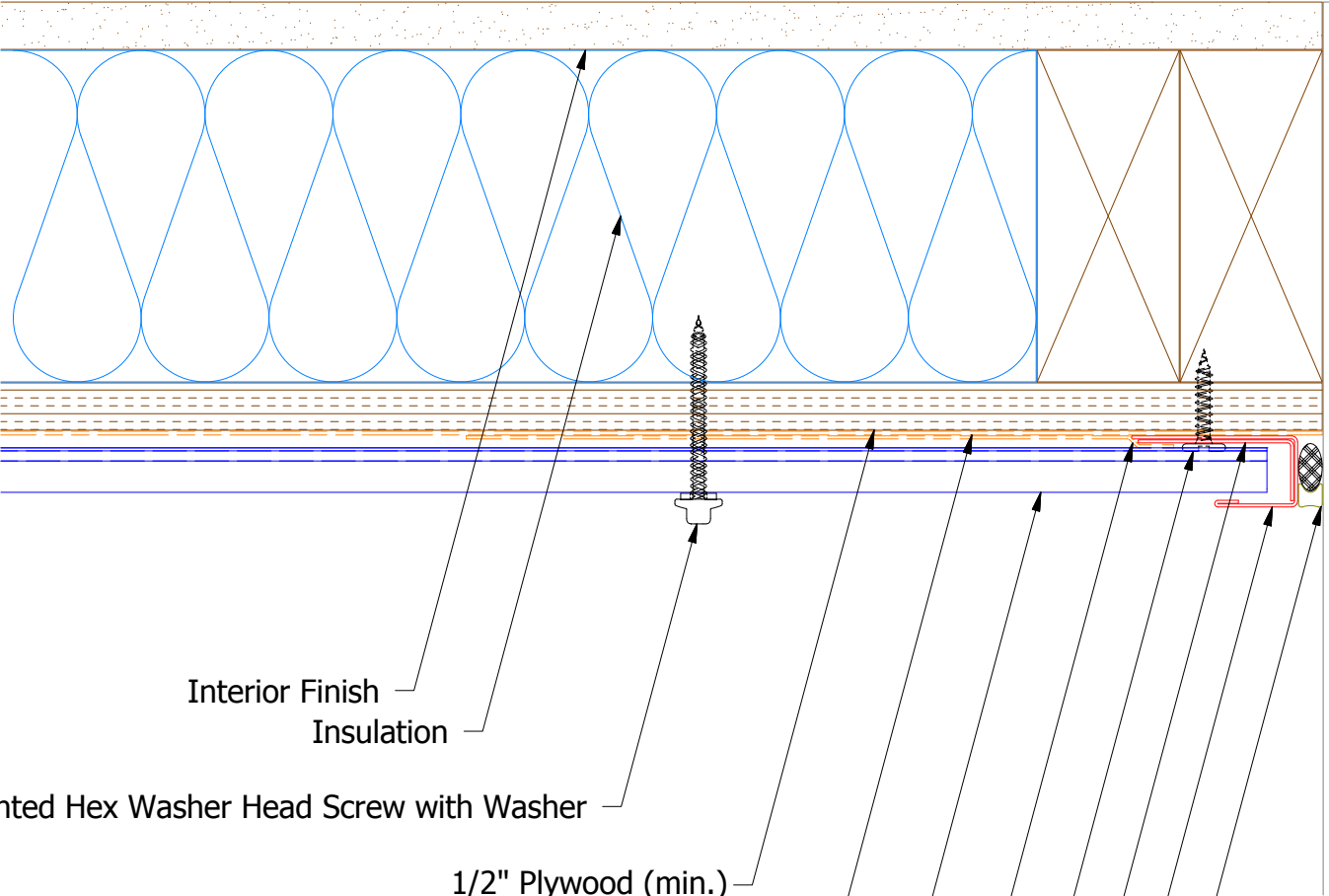
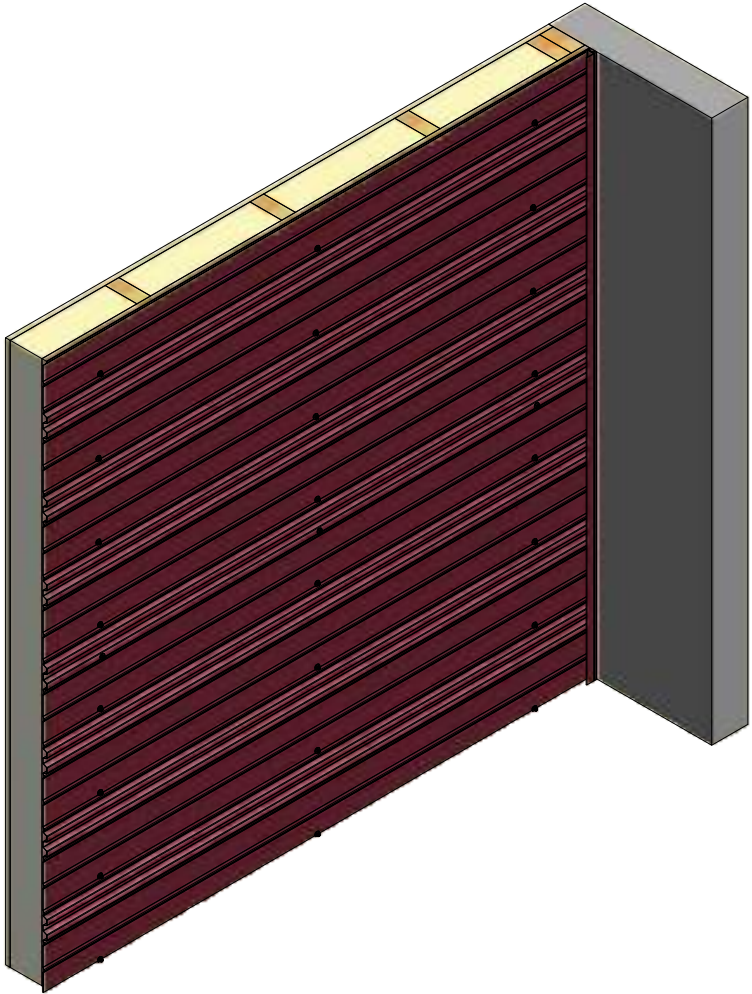


BGA661 - Base Trim

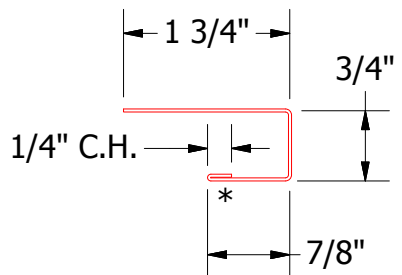
	ATAS INTERNATIONAL, INC	
	Allentown PA 610-395-8445 Mesa AZ 480-558-7210	
TITLE		Grand V Base Detail
DWG. NO.	DR DMR	DATE 6/10/2016
MATERIAL	APP DAS	DATE 8/8/16
SH. SIZE	B	SCALE X:X

REV. NO.	DATE	DESCRIPTION OF REVISION	BY	APP

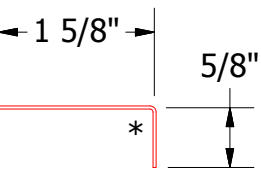
Horizontal Panel



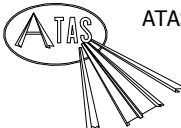
- Interior Finish
- Insulation
- #10 x 2" Painted Hex Washer Head Screw with Washer
- 1/2" Plywood (min.)
- Water and Air Resistive Barrier
- Grand V Panel
- Membrane Strip over Angle Trim and Fastener
- #10 x 1" Wafer Head Screw
- Angle Trim
- J Channel
- Backer Rod and Sealant



BGA034 - J Channel



BGA680 - Angle Trim

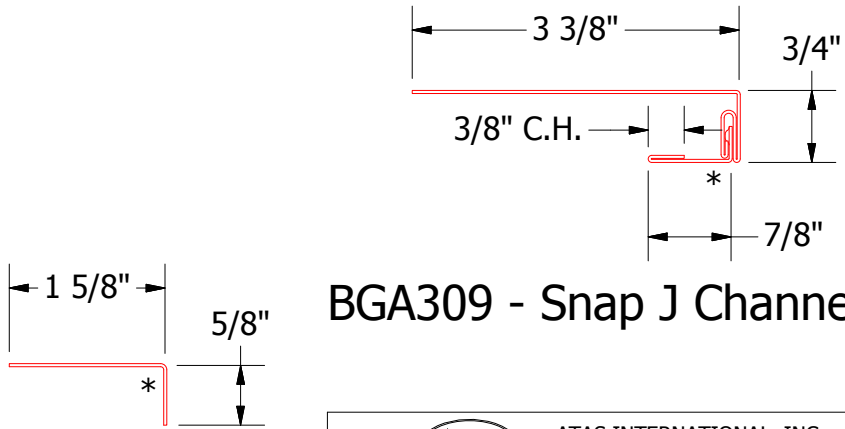
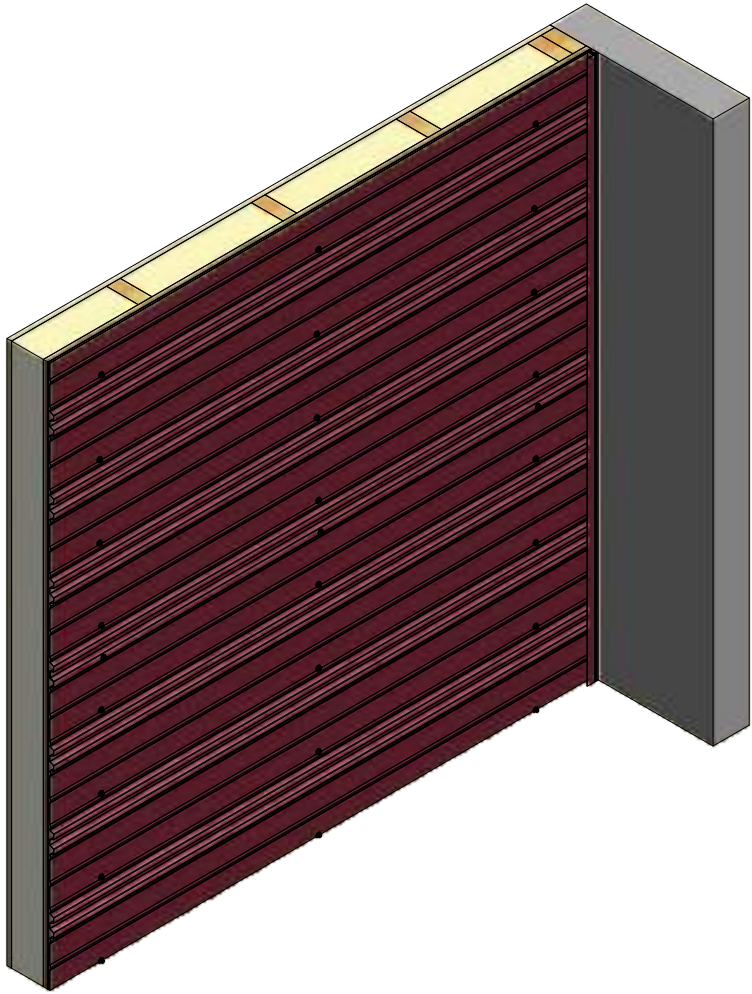
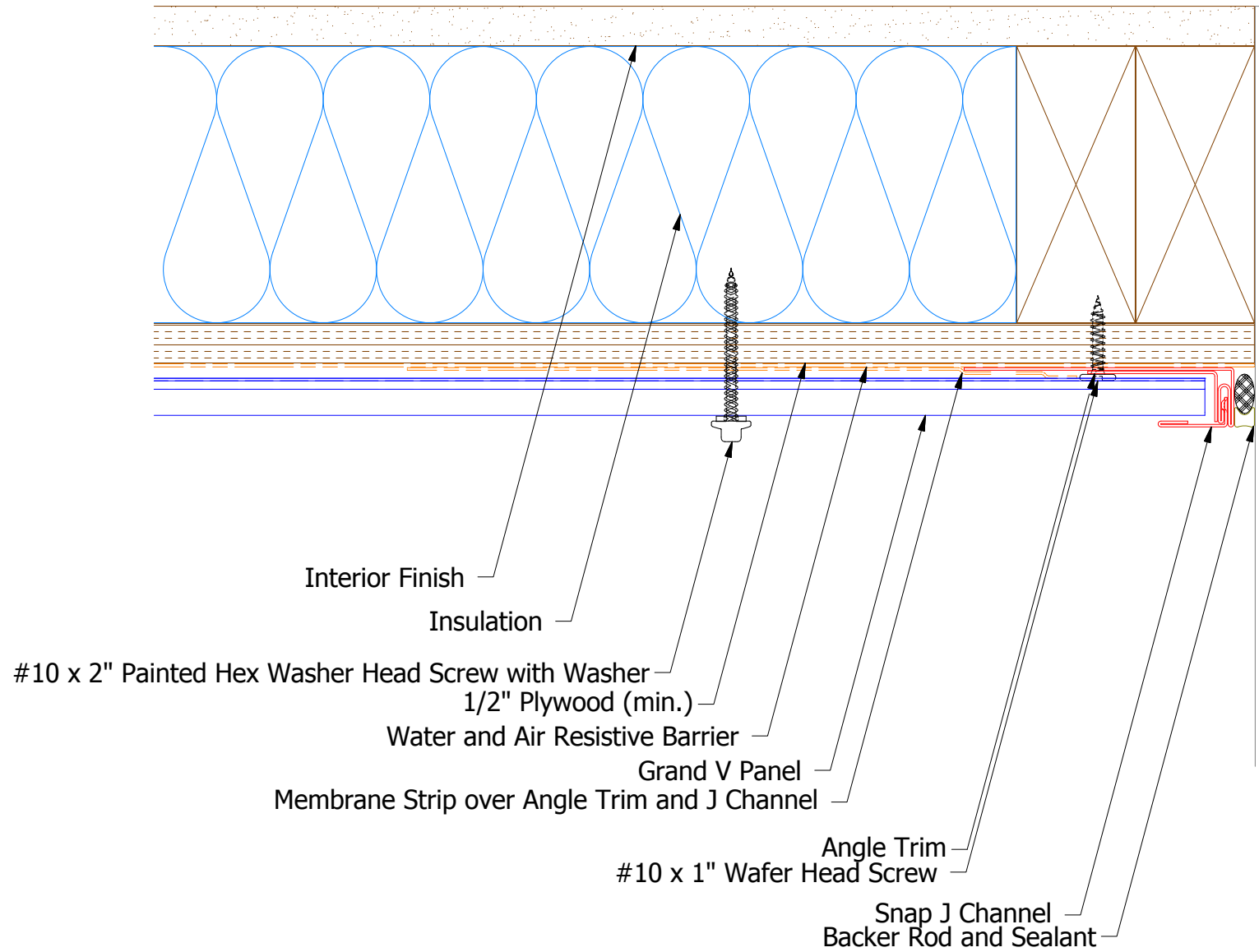


ATAS INTERNATIONAL, INC  
Allentown PA  
610-395-8445  
Mesa AZ  
480-558-7210

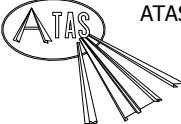
TITLE			
Grand V Endwall Detail			
DWG. NO.		DR	DATE
		DMR	6/13/2016
MATERIAL		APP	DATE
		SH. SIZE	B
		SCALE	X:X

REV. NO.	DATE	DESCRIPTION OF REVISION	BY	APP

Horizontal Panel - Alternate Detail



BGA680 - Angle Trim

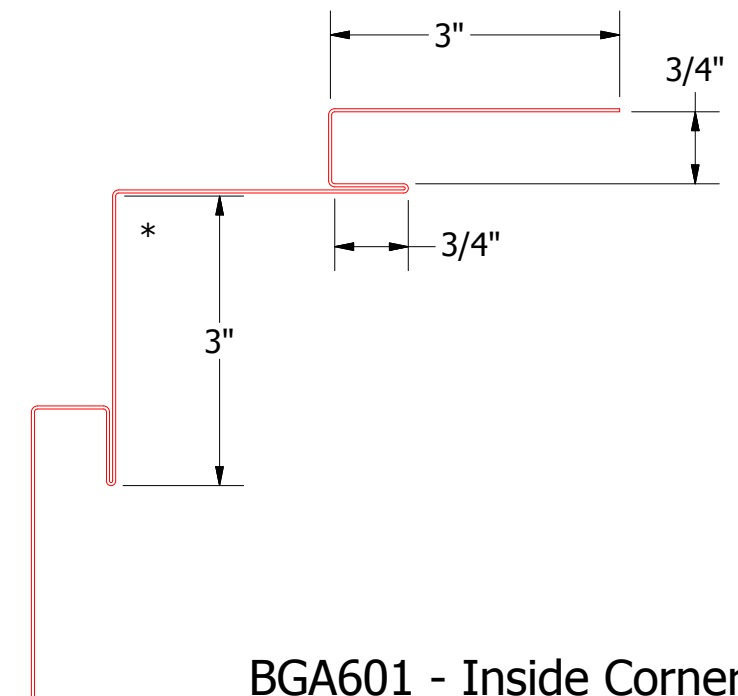
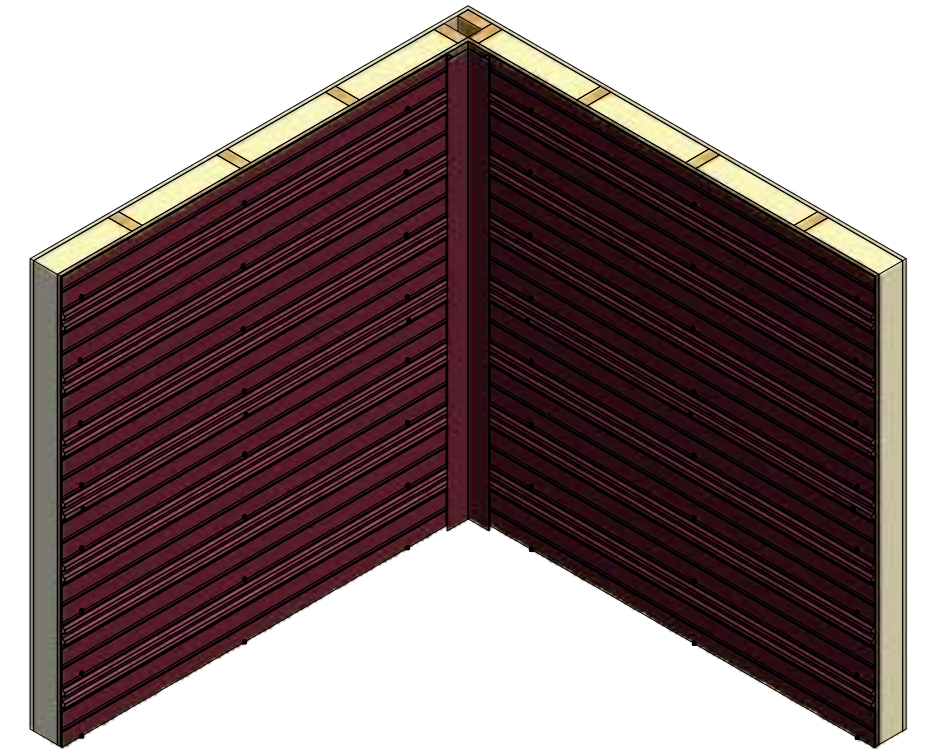
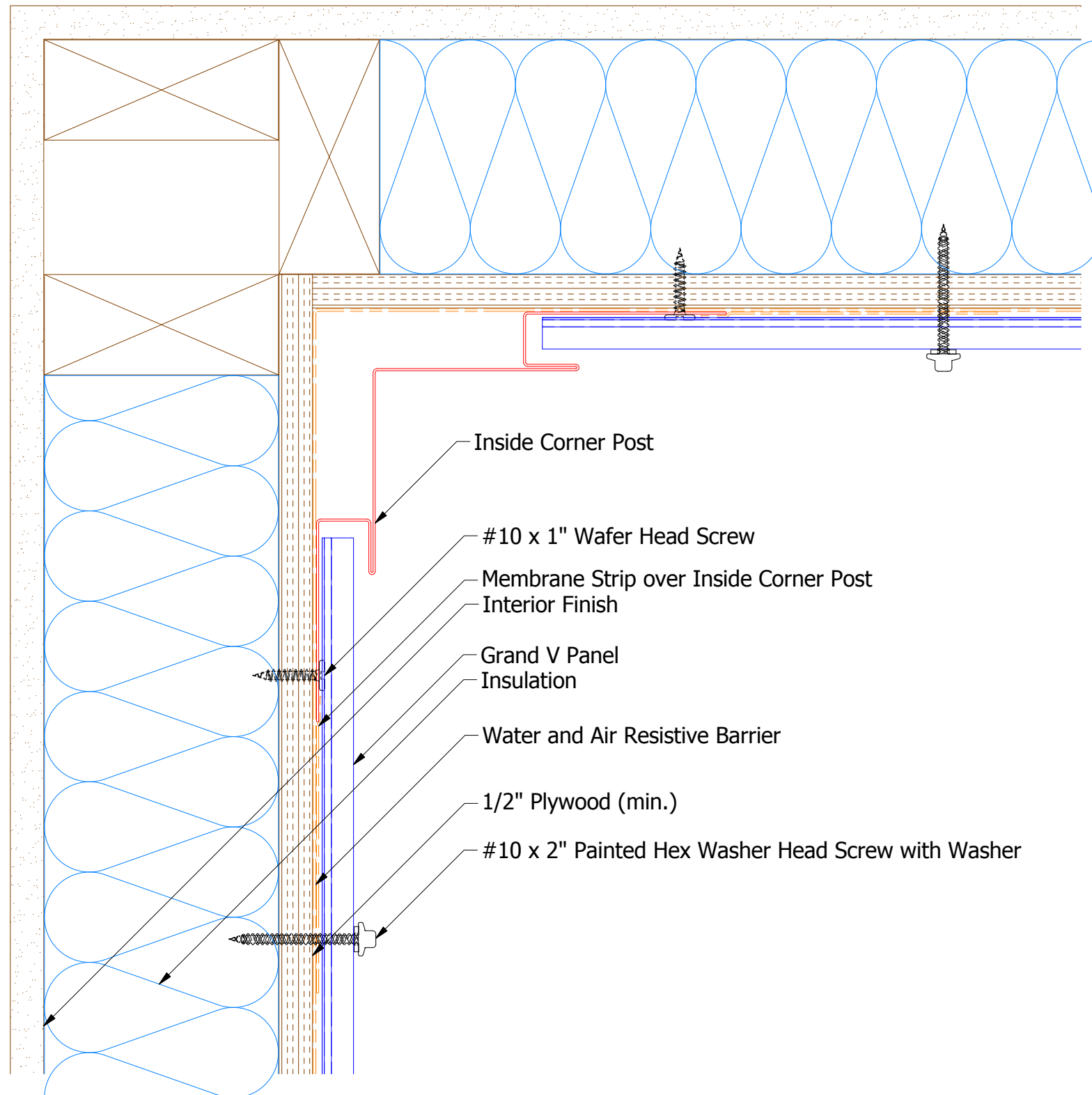


ATAS INTERNATIONAL, INC  
Allentown PA  
610-395-8445  
Mesa AZ  
480-558-7210

TITLE			
Grand V Endwall Detail			
DWG. NO.	DR	DATE	
	DMR	6/13/2016	
MATERIAL	APP	DATE	
	SH. SIZE	B	SCALE X:X

REV. NO.	DATE	DESCRIPTION OF REVISION	BY	APP

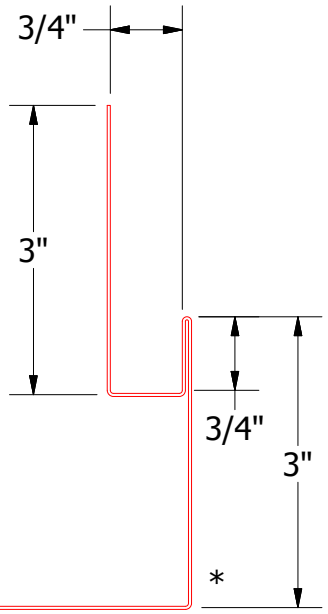
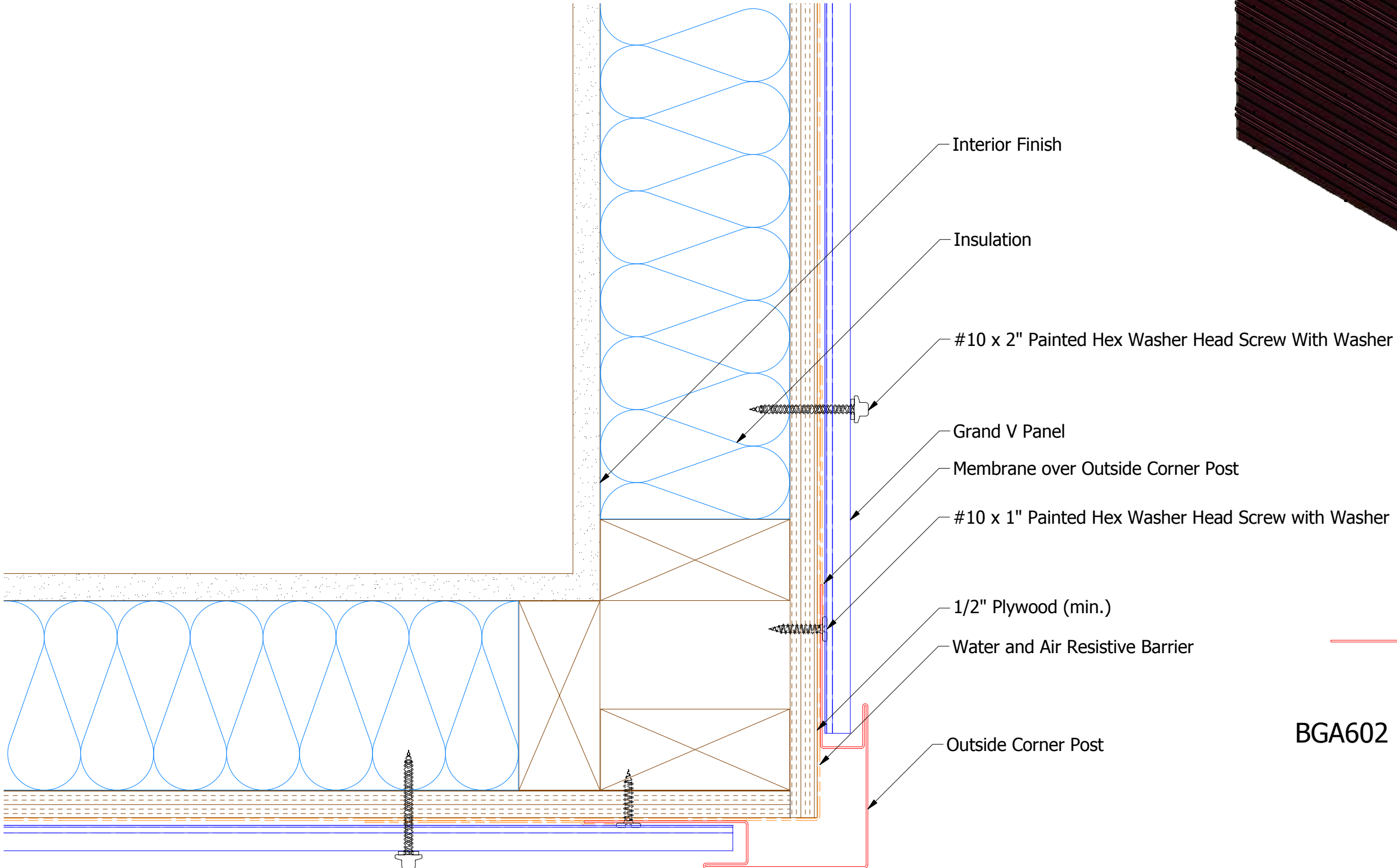
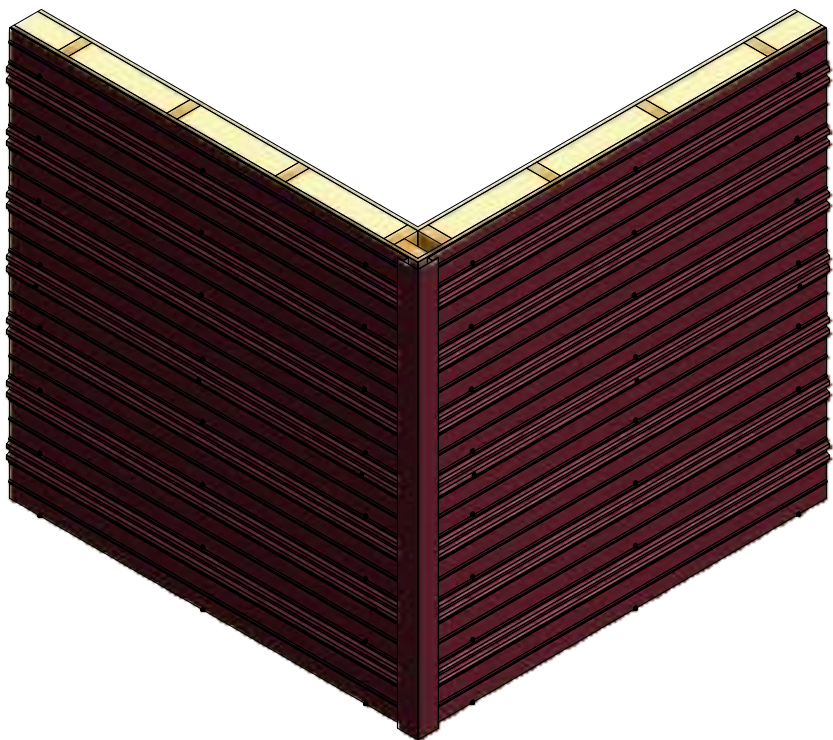
## Horizontal Panel



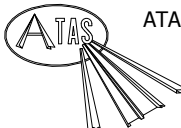
## BGA601 - Inside Corner Post

					TITLE <b>Grand V Inside Corner Detail</b>			
					DWG. NO.		DR DMR	DATE 6/14/2016
					MATERIAL		APP DAS	DATE 8/8/16
REV. NO.	DATE	DESCRIPTION OF REVISION	BY	APP			SH. SIZE <b>B</b>	SCALE <b>X:X</b>

Horizontal Panel



BGA602 - Outside Corner Post

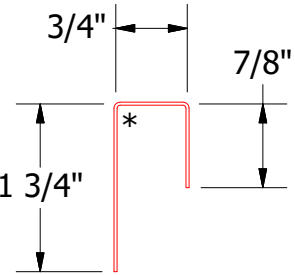
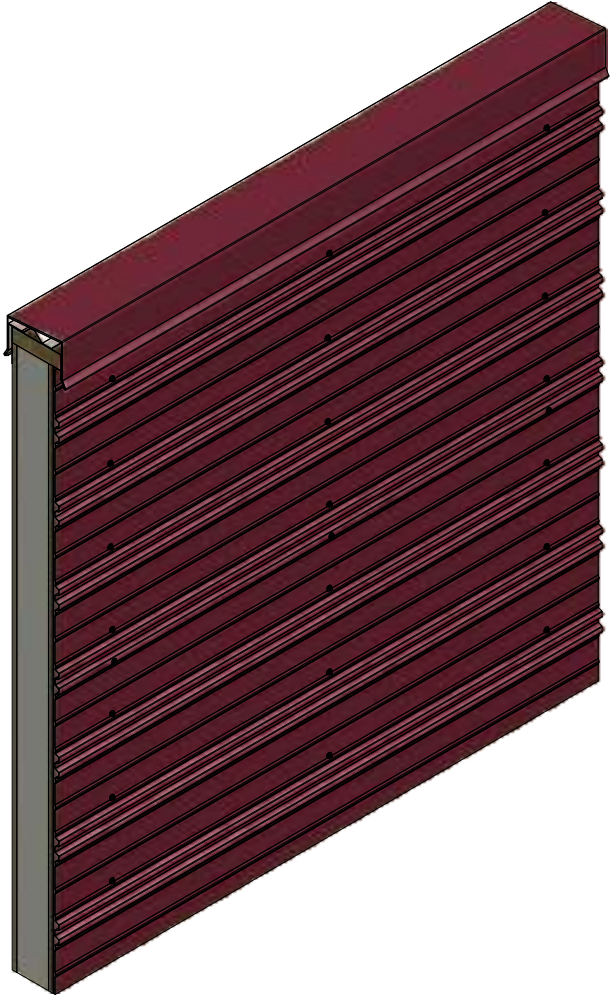
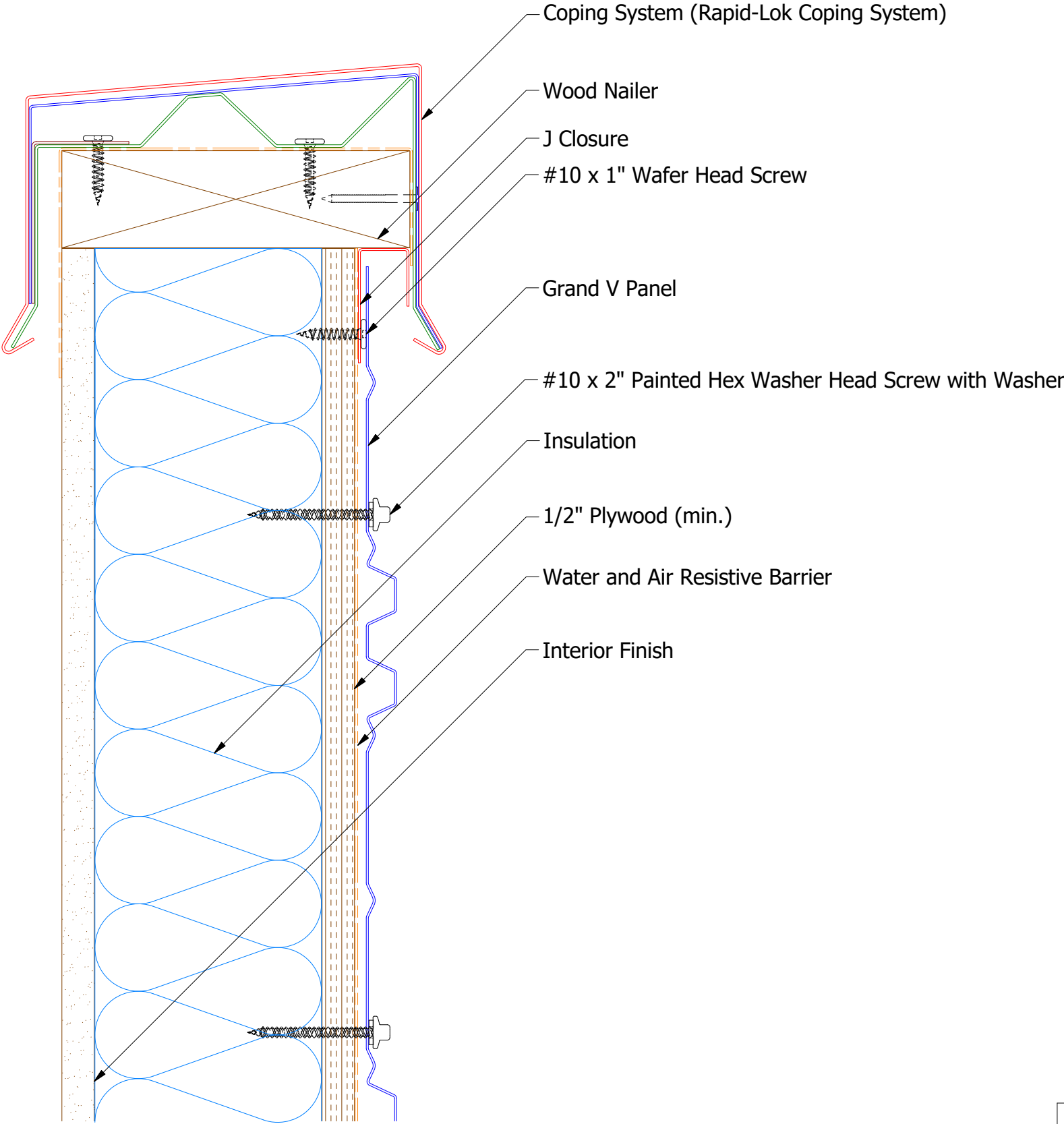


ATAS INTERNATIONAL, INC  
Allentown PA  
610-395-8445  
Mesa AZ  
480-558-7210

TITLE				Grand V Outside Corner Detail	
DWG. NO.		DR		DATE	
		DMR		6/14/2016	
APP		DAS		DATE	
				8/8/16	
MATERIAL		SH. SIZE		SCALE	
		B		X:X	

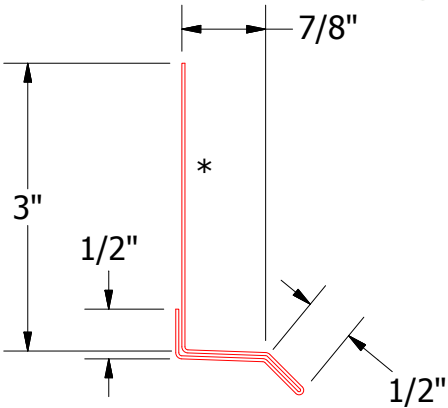
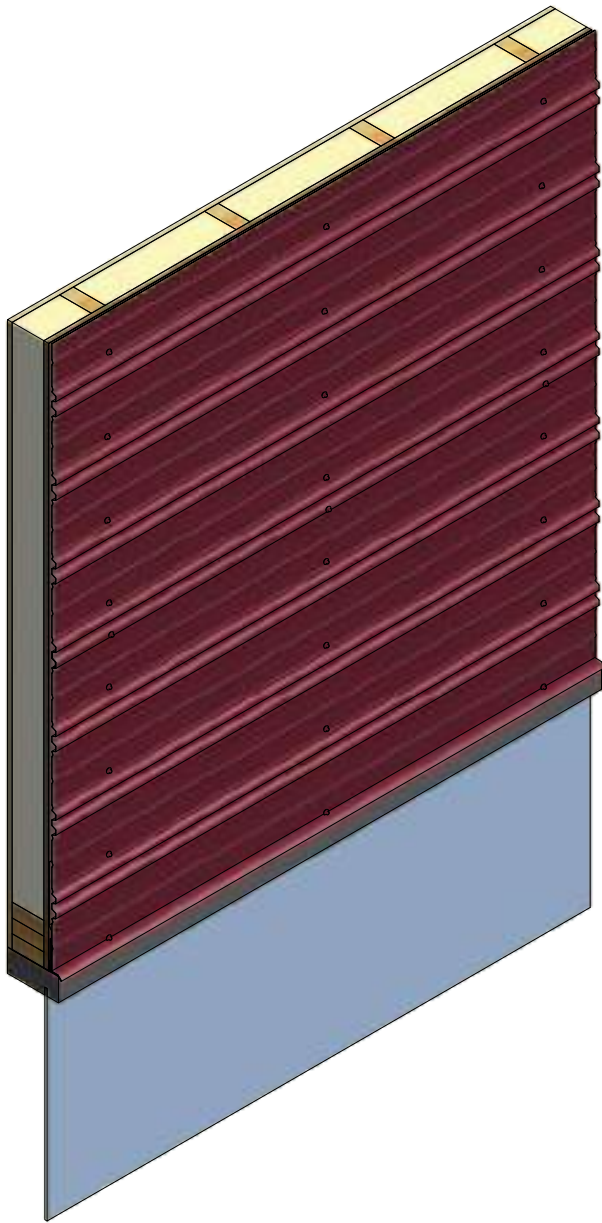
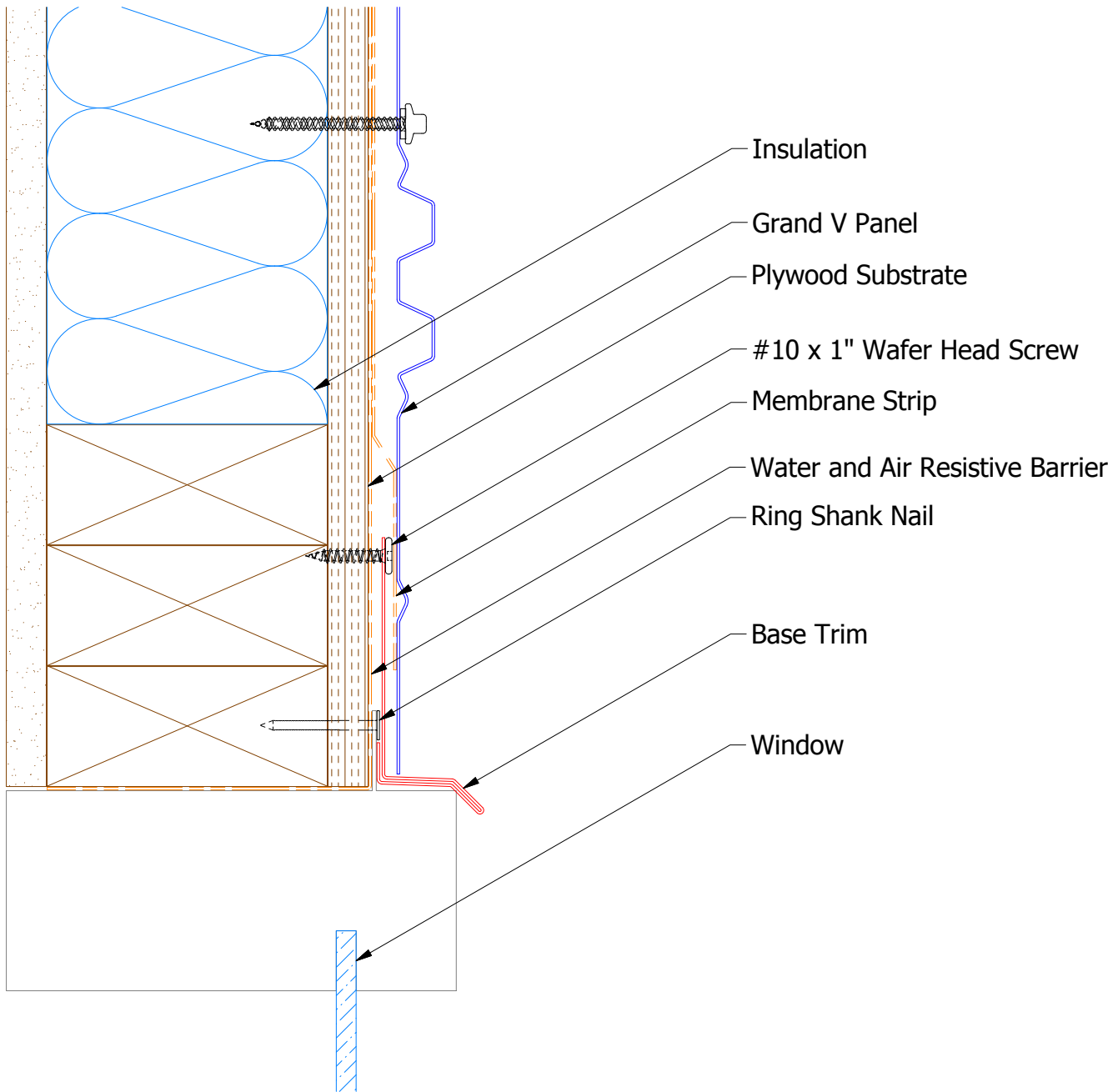
REV. NO.	DATE	DESCRIPTION OF REVISION	BY	APP

Horizontal Panel




BGA270 - J Closure

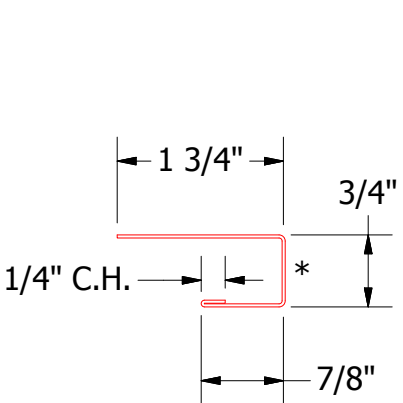
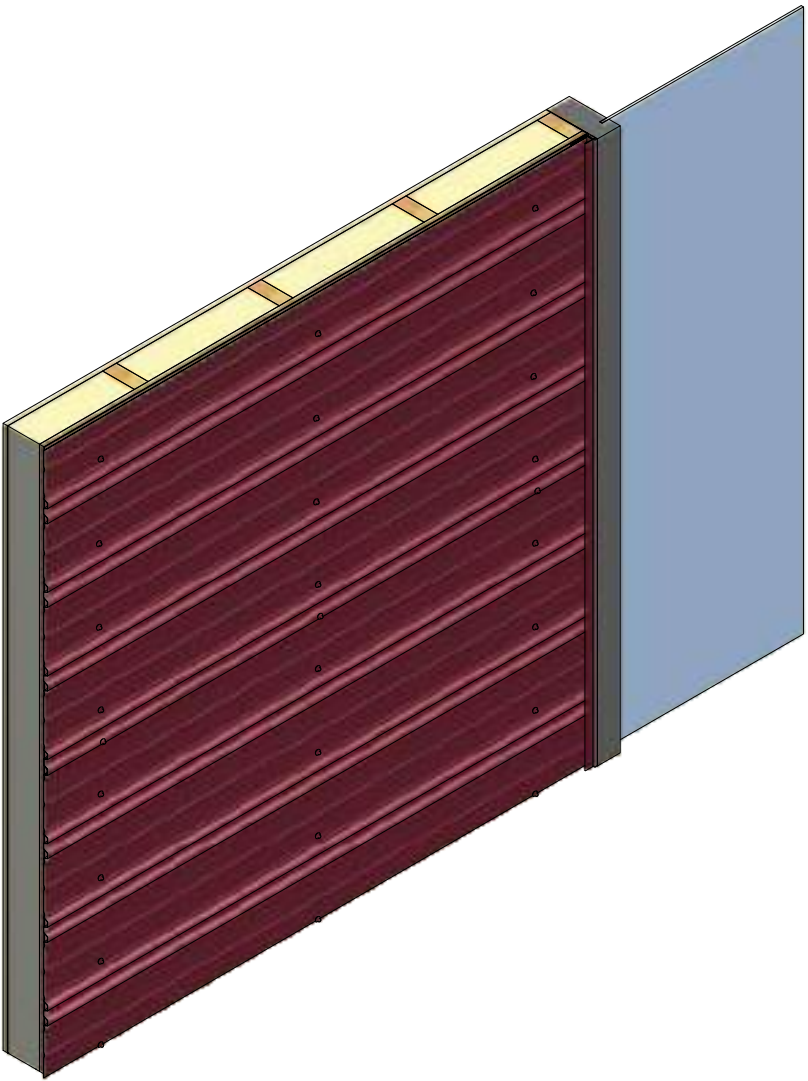
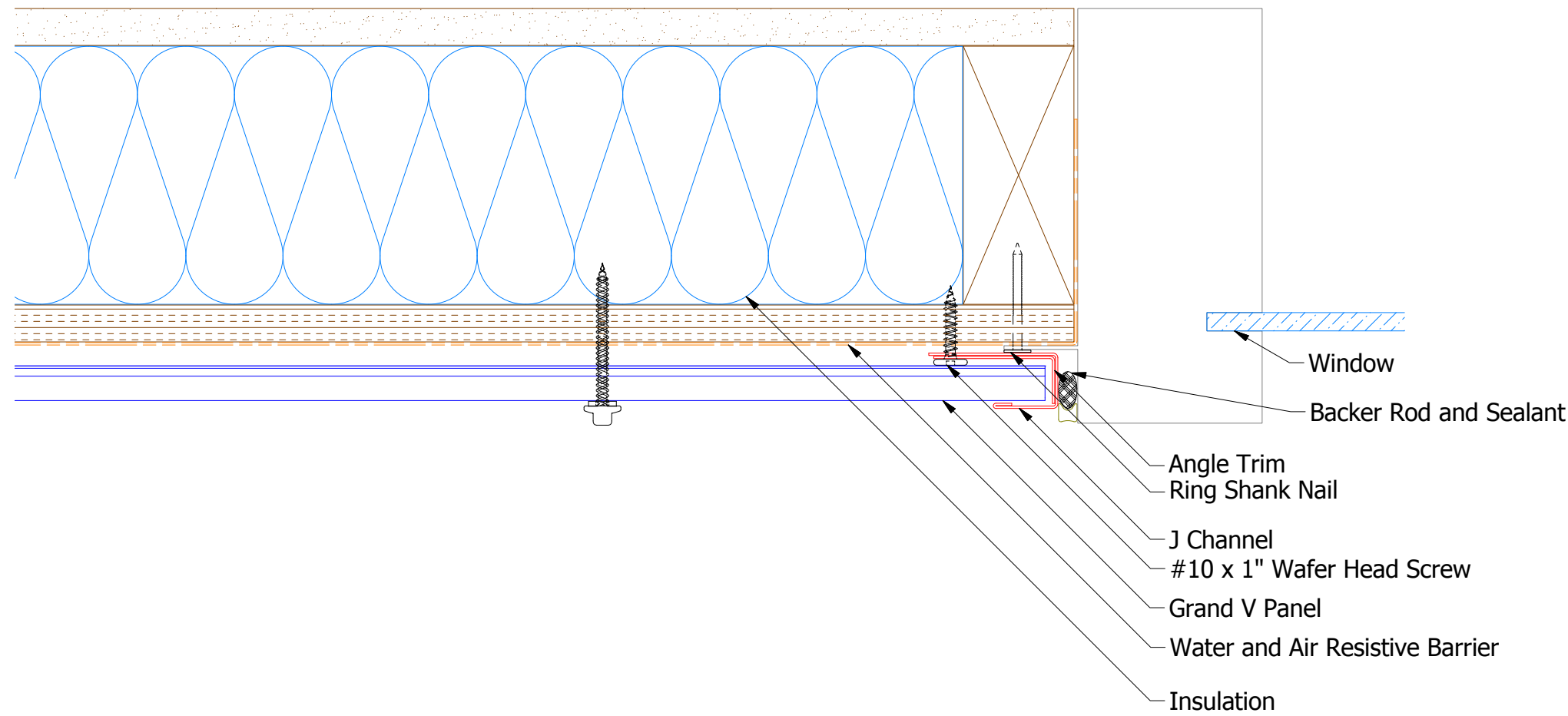

Horizontal Panel



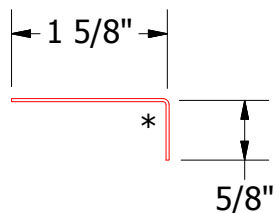
BGA661 - Base Trim

				ATAS INTERNATIONAL, INC Allentown PA 610-395-8445 Mesa AZ 480-558-7210			
TITLE				Grand V Head Window Flange Detail			
DWG. NO.		DR		DATE		7/30/2018	
		APP		DATE			
MATERIAL		SH. SIZE		SCALE		X:X	
REV. NO.		DATE		DESCRIPTION OF REVISION		BY APP	

Horizontal Panel



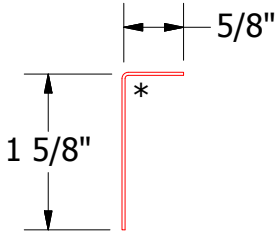
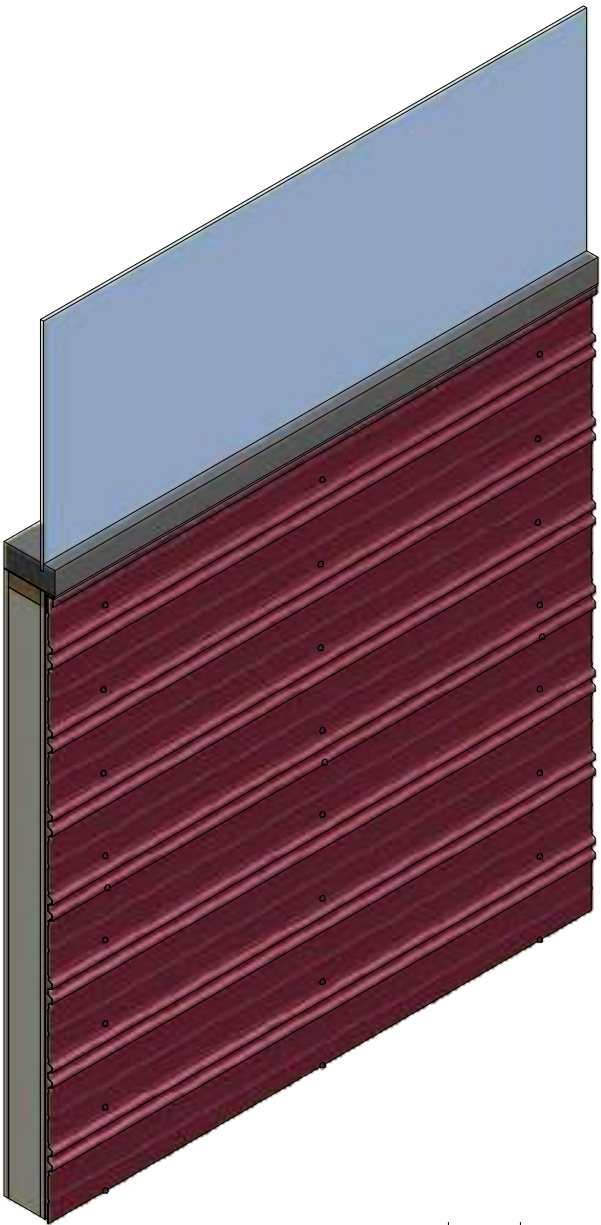
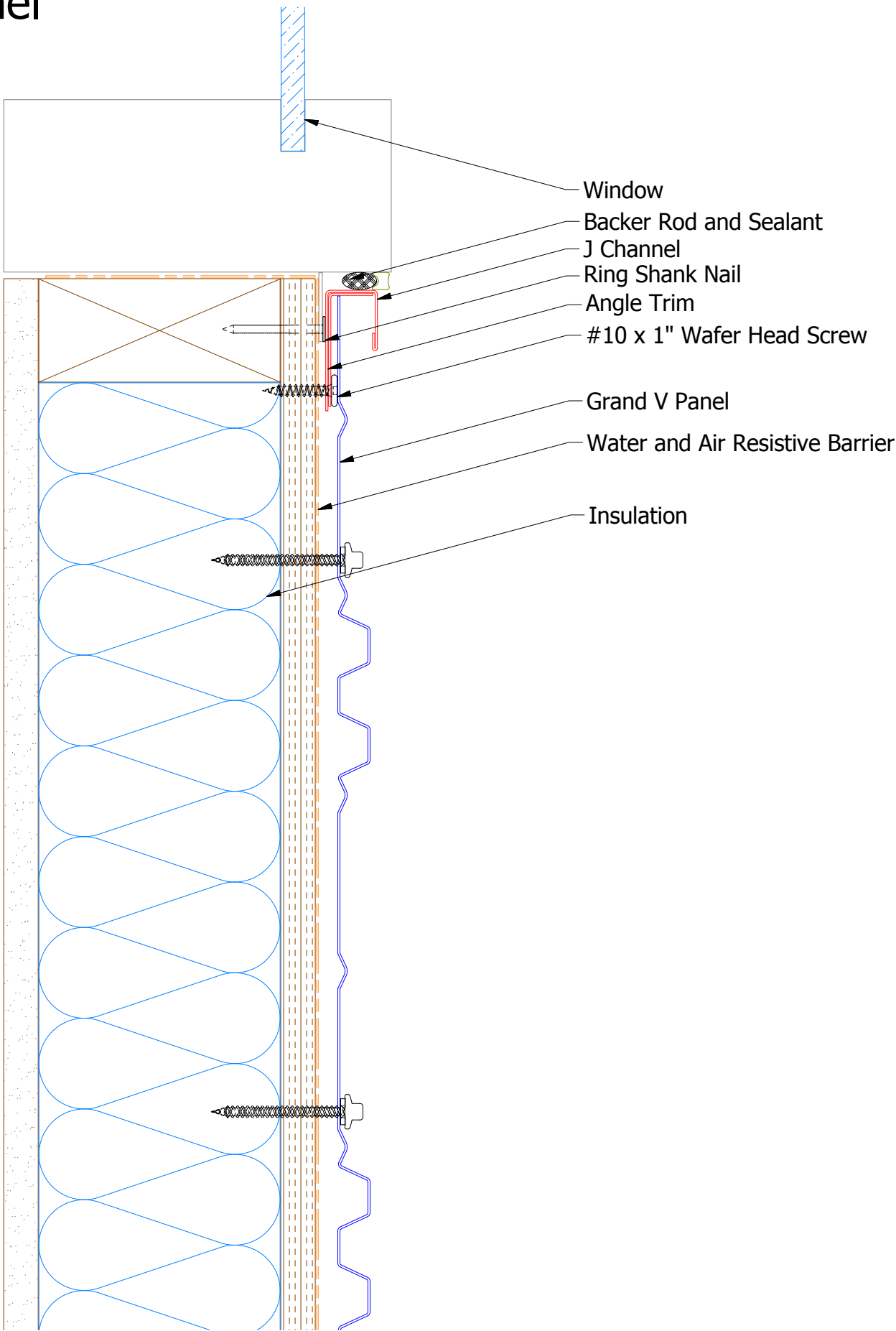
BGA034 - J Channel



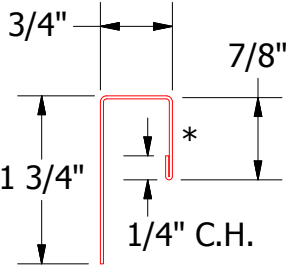
BGA680 - Angle Trim

								Grand V Jamb Window Flange Detail	
						DWG. NO.		DR MBP	DATE 7/30/2018
						MATERIAL		APP	DATE
REV. NO.	DATE	DESCRIPTION OF REVISION			BY	APP	SH. SIZE	B	SCALE X:X


Horizontal Panel



BGA680 - Angle Trim



BGA034 - J Channel

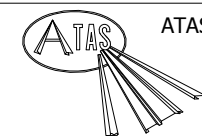
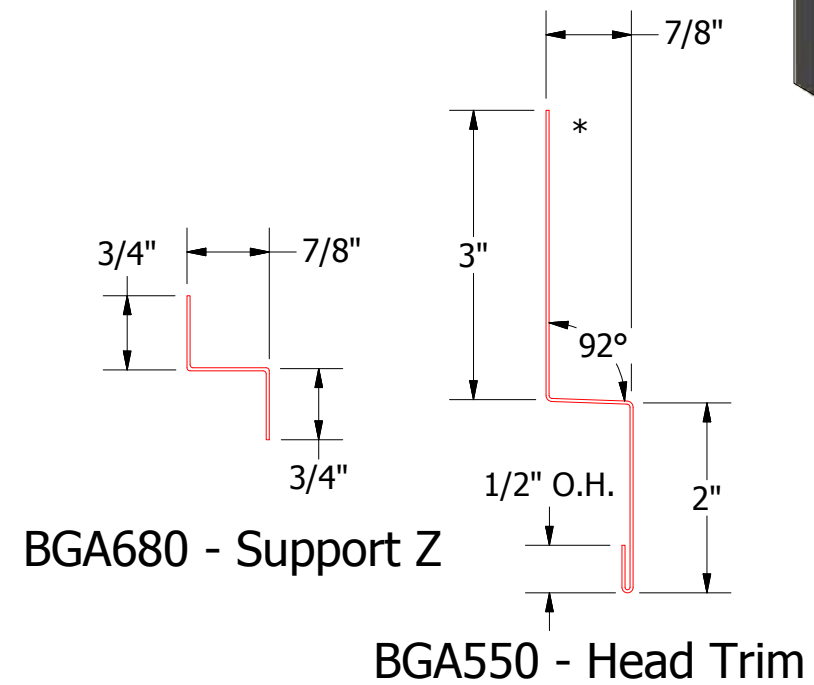
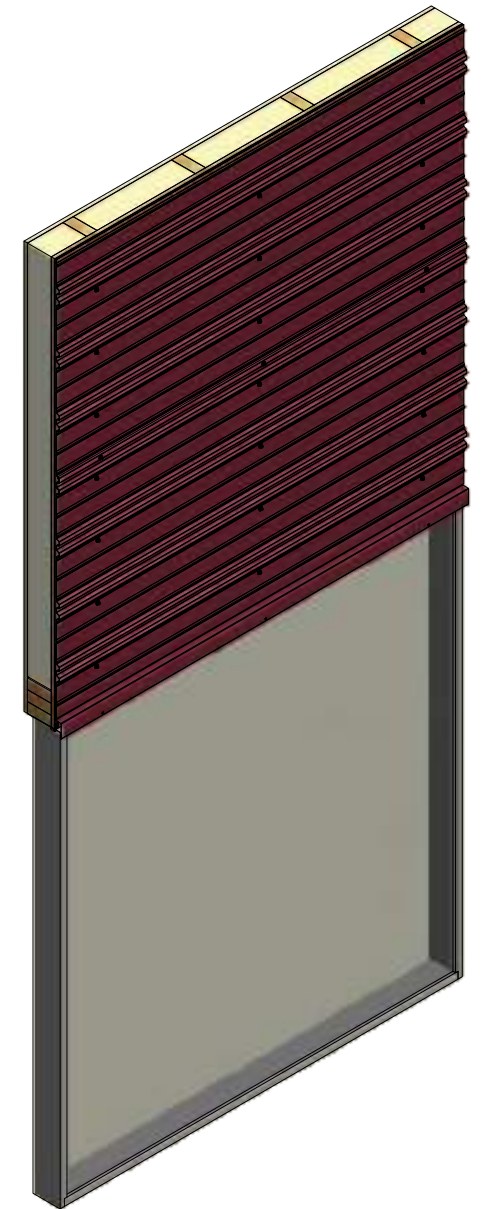
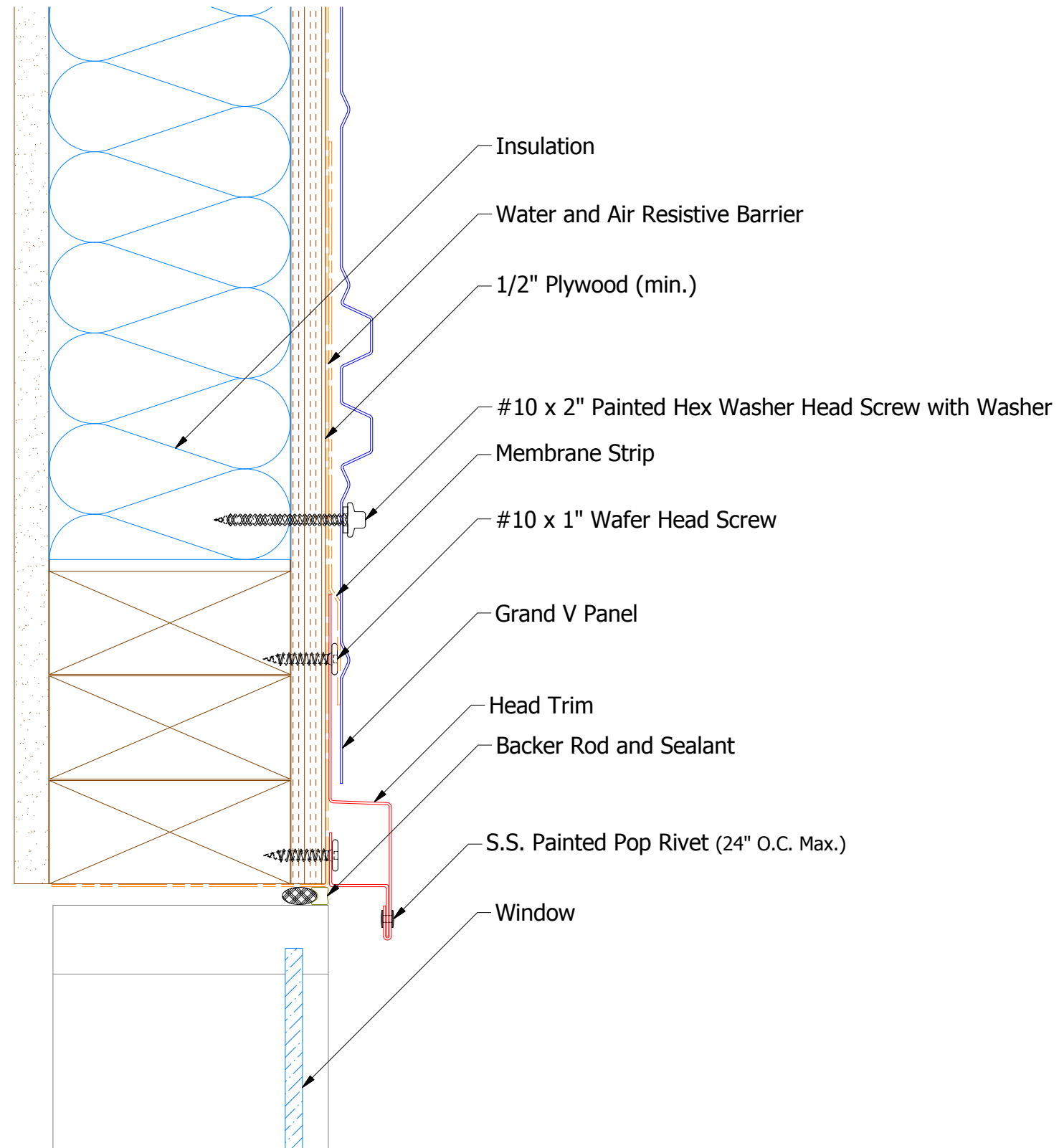


ATAS INTERNATIONAL, INC  
Allentown PA  
610-395-8445  
Mesa AZ  
480-558-7210

TITLE Grand V Window Sill Flange Detail			
DWG. NO.		DR MBP	DATE 7/30/2018
MATERIAL		APP	DATE
REV. NO.	DATE	DESCRIPTION OF REVISION	BY APP
SH. SIZE B		SCALE X:X	

REV. NO.	DATE	DESCRIPTION OF REVISION	BY	APP

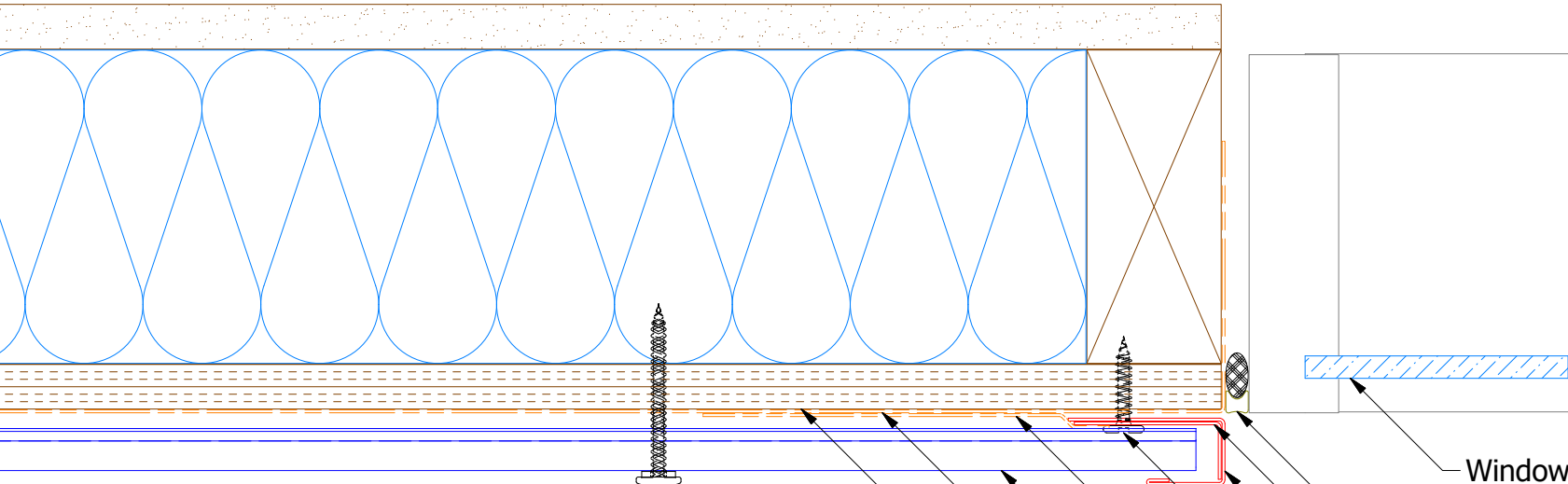
## Horizontal Panel



**ATAS INTERNATIONAL, INC**  
Allentown PA  
610-395-8445  
Mesa AZ  
480-558-7210

					Grand V Head Existing Window Detail			
					DWG. NO.		DR MBP	DATE 7/19/18
					MATERIAL		APP	DATE
REV. NO.	DATE	DESCRIPTION OF REVISION		BY	APP	SH. SIZE B		SCALE X:X

Horizontal Panel



Window

Backer Rod and Sealant  
Angle Trim  
J Channel

#10 x 2" Wafer Head Screw

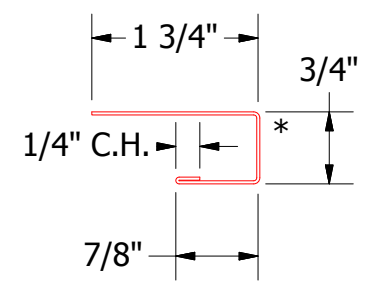
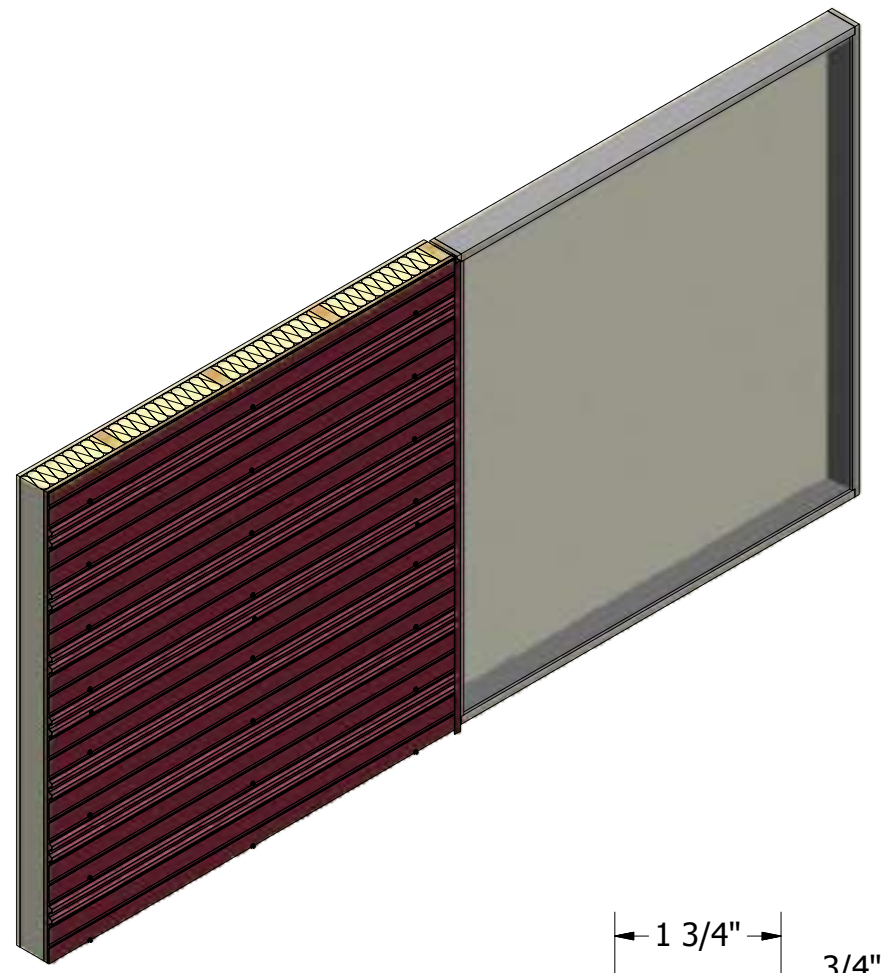
Membrane Strip

Grand V Panel

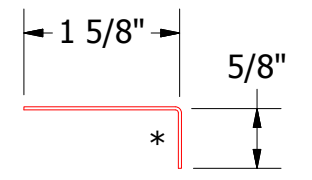
Water and Air Resistive Barrier

1/2" Plywood (min.)

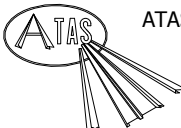
#10 x 2" Painted Hex Washer Head Screw with Washer



BGA034 - J Channel



BGA680 - Angle Trim

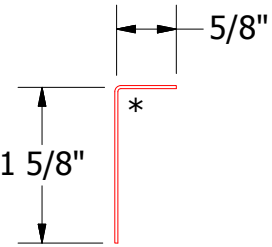
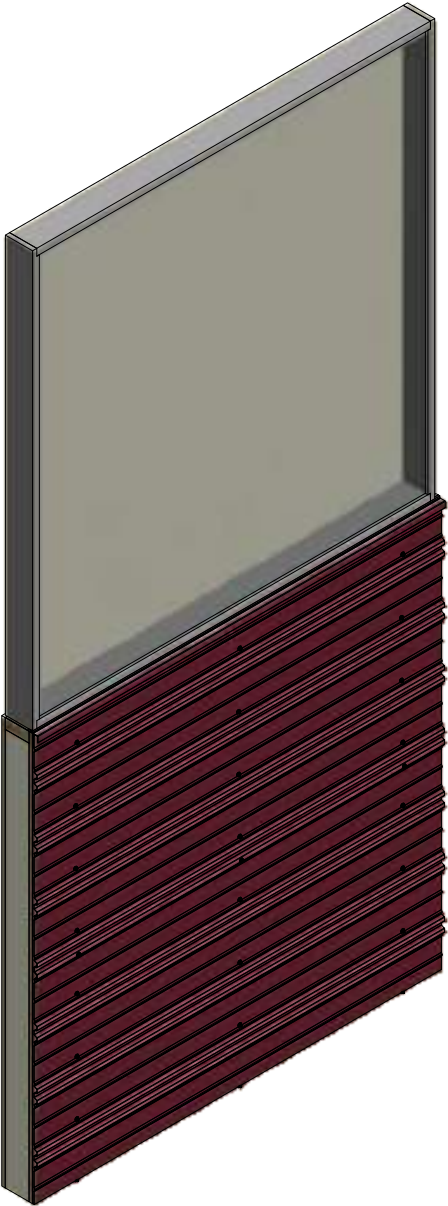
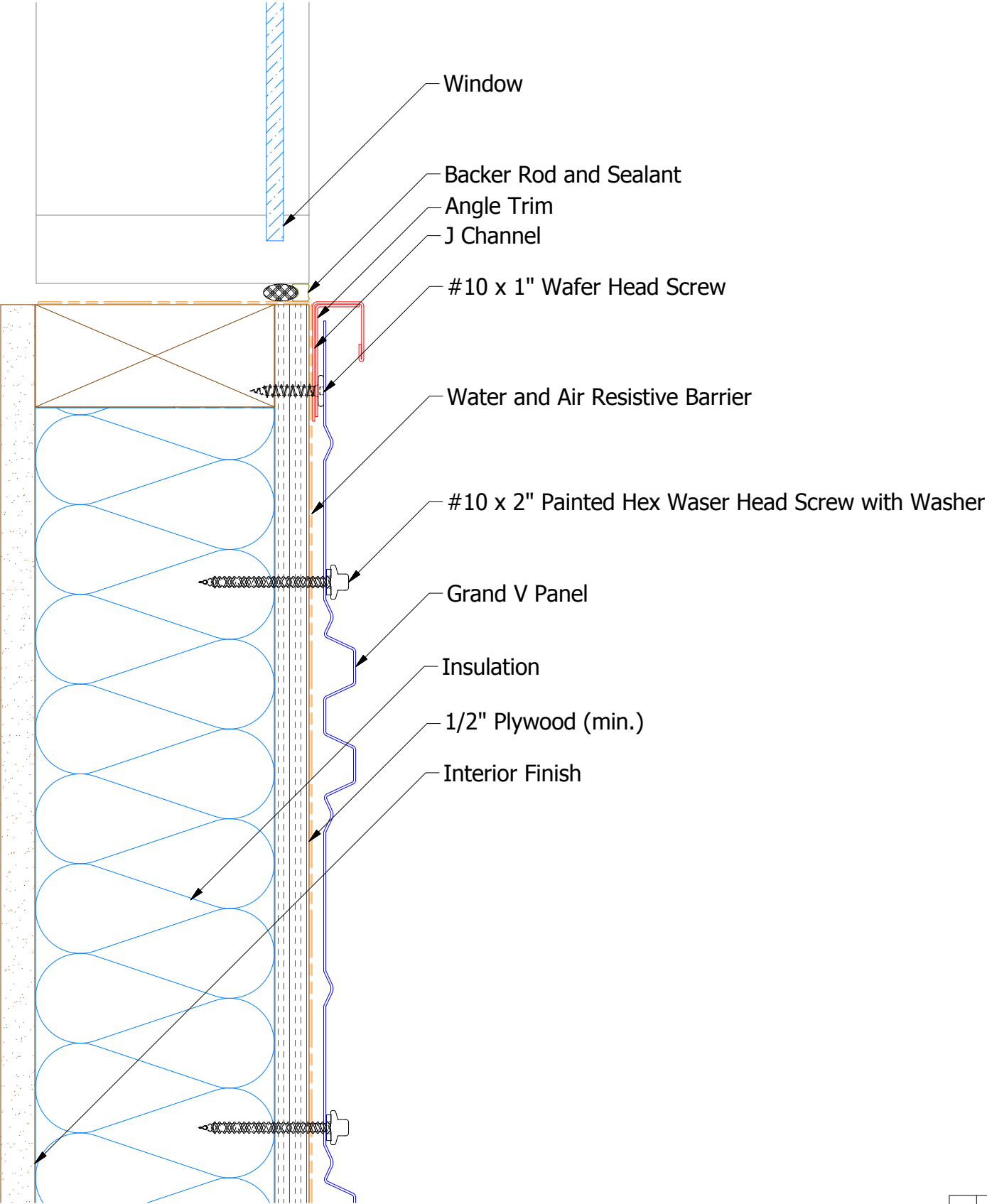


ATAS INTERNATIONAL, INC  
Allentown PA  
610-395-8445  
Mesa AZ  
480-558-7210

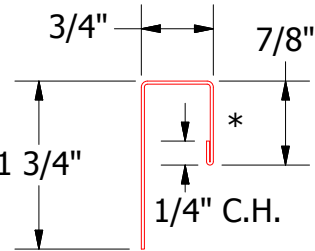
TITLE Grand V Jamb Existing Window Detail			
DWG. NO.		DR MBP	DATE 7/19/18
APP		DATE	
MATERIAL		SH. SIZE B	SCALE X:X

REV. NO.	DATE	DESCRIPTION OF REVISION	BY	APP


Horizontal Panel



BGA280 - Angle Trim



BGA034 - J Channel

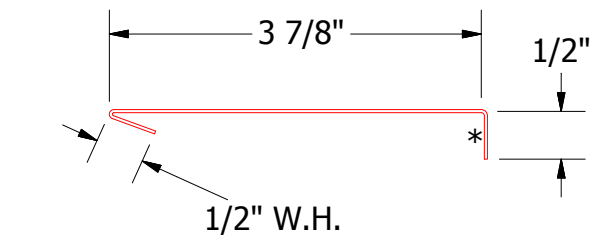
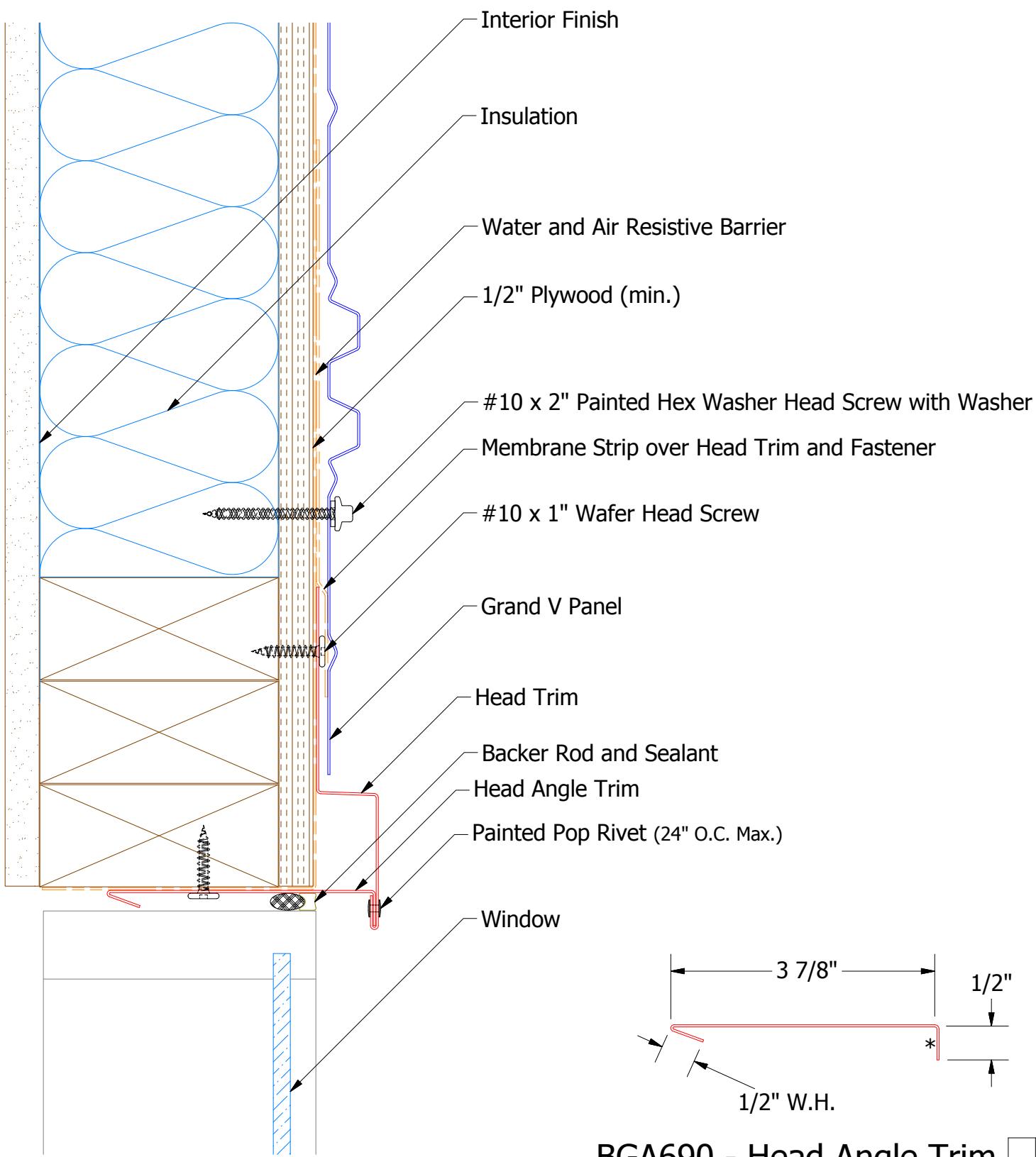


ATAS INTERNATIONAL, INC  
Allentown PA  
610-395-8445  
Mesa AZ  
480-558-7210

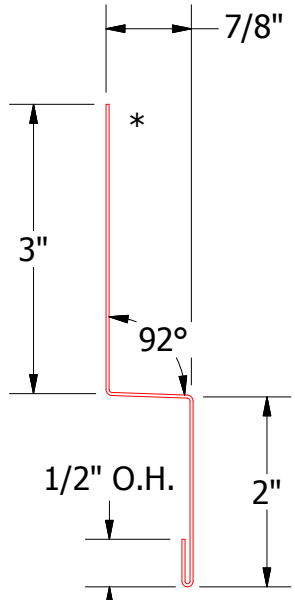
TITLE Grand V Window Sill Existing Window Detail			
DWG. NO.		DR MBP	DATE 7/19/18
APP		DATE	
MATERIAL		SH. SIZE B	SCALE X:X

REV. NO.	DATE	DESCRIPTION OF REVISION	BY	APP

Horizontal Panel

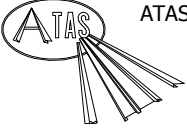


BGA690 - Head Angle Trim



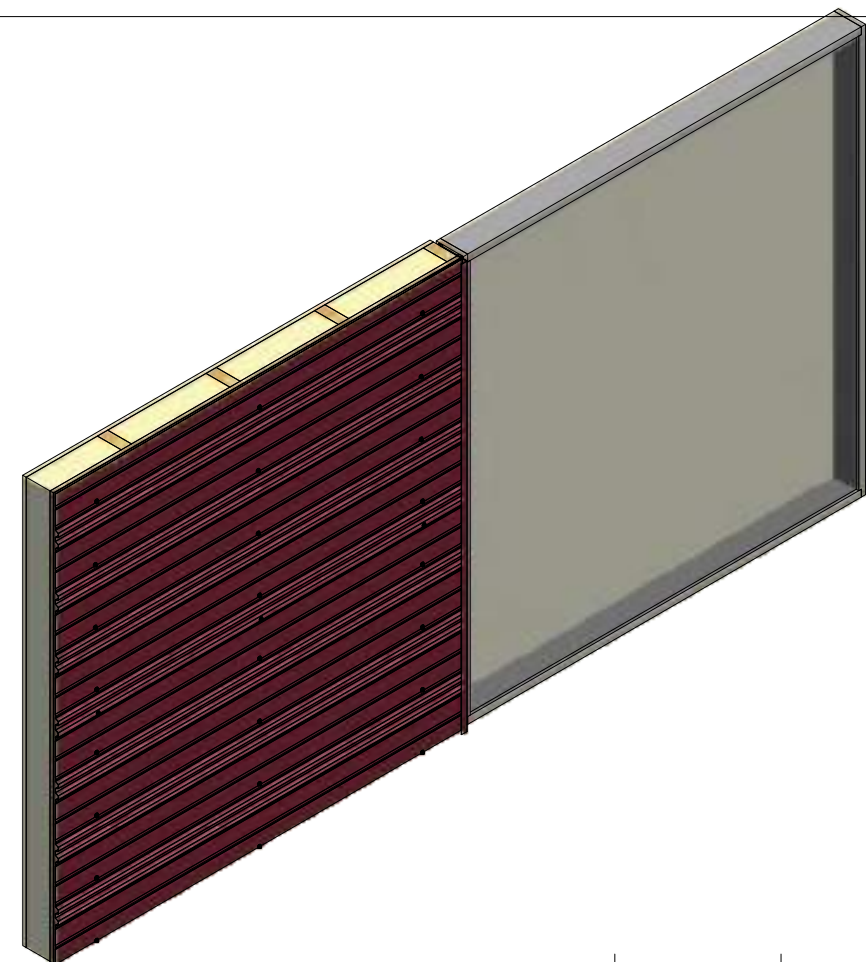
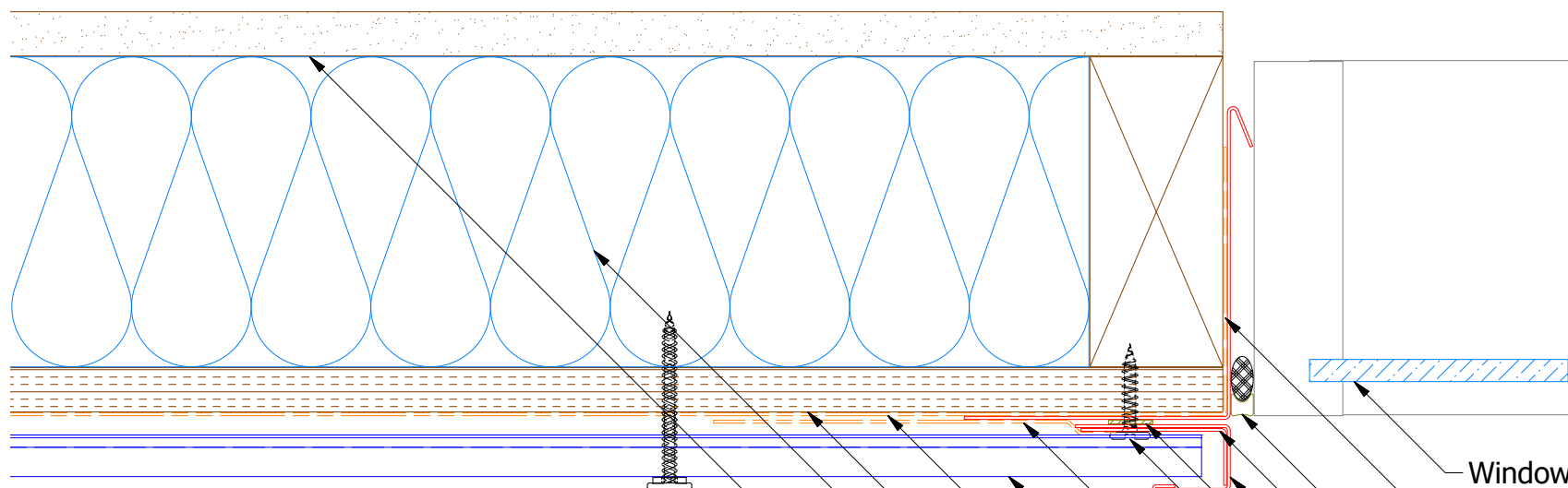
BGA550 - Head Trim



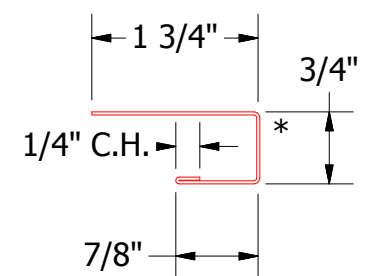
				ATAS INTERNATIONAL, INC Allentown PA 610-395-8445 Mesa AZ 480-558-7210			
TITLE				Grand V Head Detail			
DWG. NO.				DR	DMR	DATE	6/13/2016
				APP	DAS	DATE	8/8/16
MATERIAL				SH. SIZE	B	SCALE	X:X

REV. NO.	DATE	DESCRIPTION OF REVISION	BY	APP

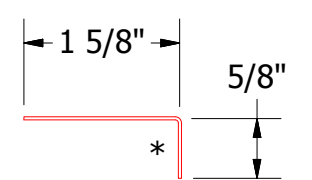
# Horizontal Panel



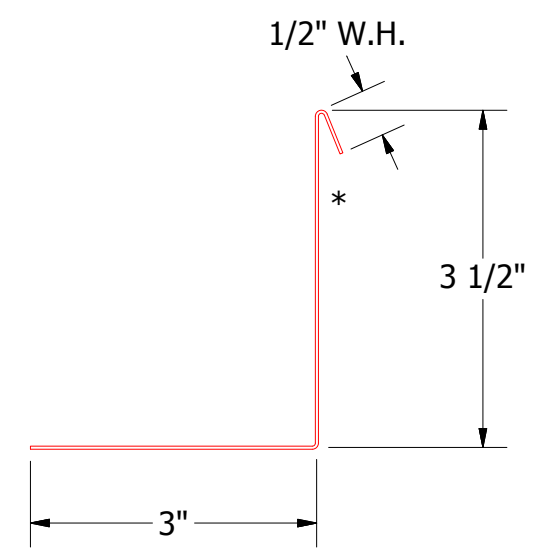
- Window
- Angle Trim with Return
- Backer Rod and Sealant
- Angle Trim
- J Channel
- Butyl Tape
- #10 x 2" Wafer Head Screw
- Membrane Strip over J Channel and Angle Trim
- Grand V Panel
- Water and Air Resistive Barrier
- 1/2" Plywood (min.)
- Insulation
- Interior Finish
- #10 x 2" Painted Hex Washer Head Screw with Washer



BGA034 - J Channel



BGA680 - Angle Trim



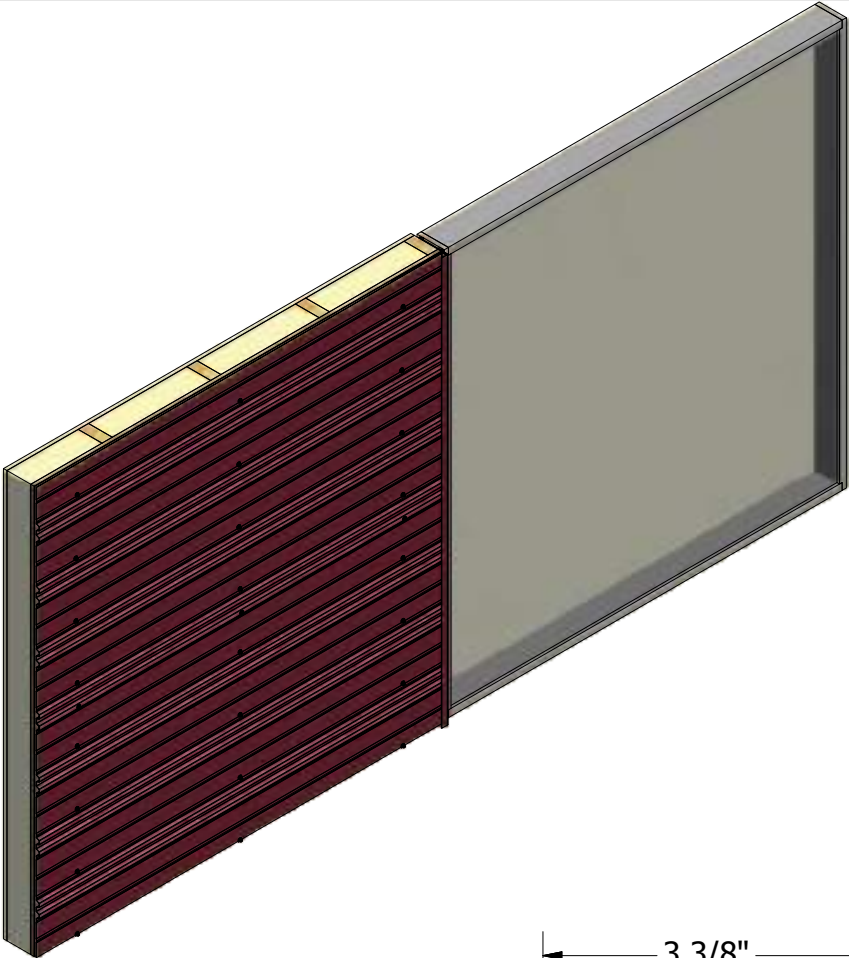
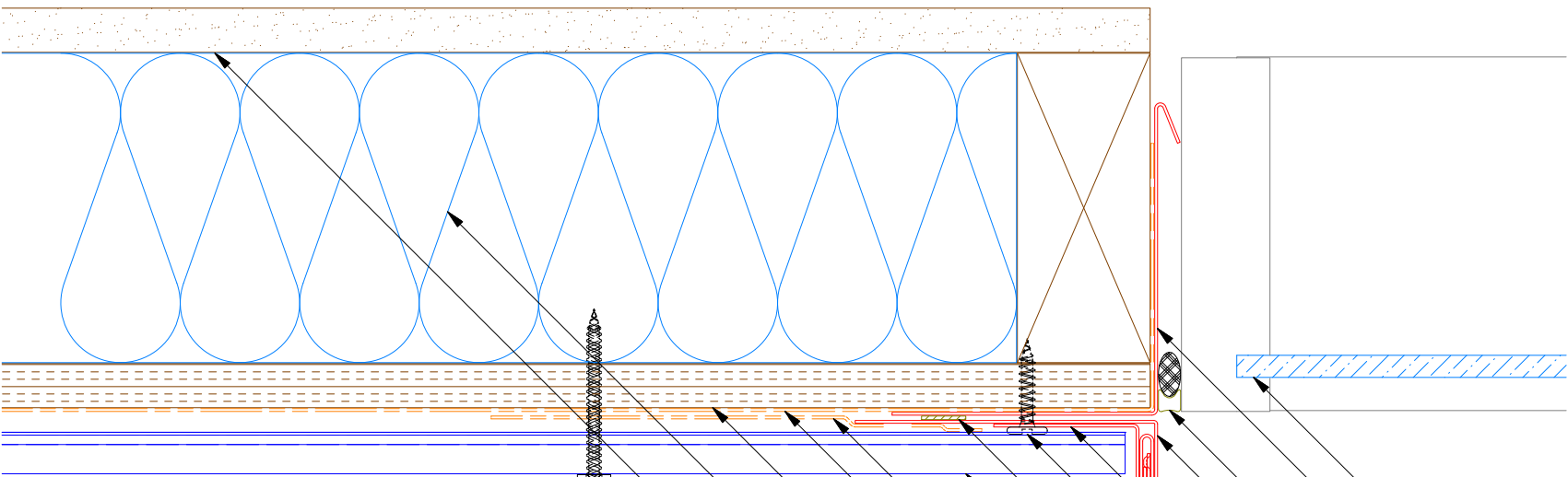
BGA683 - Angle Trim with Return



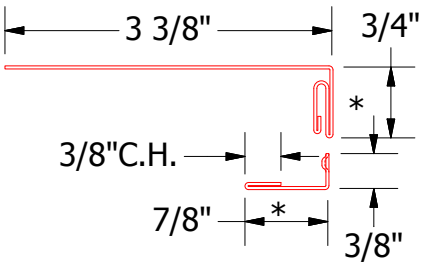
ATAS INTERNATIONAL, INC  
Allentown PA  
610-395-8445  
Mesa AZ  
480-558-7210

TITLE				
Grand V Jamb Detail				
DWG. NO.		DR		DATE
		DMR		6/14/2016
MATERIAL		APP		DATE
		DAS		8/8/16
REV. NO.	DATE	DESCRIPTION OF REVISION		BY APP
SH. SIZE		SCALE		X:X
B				

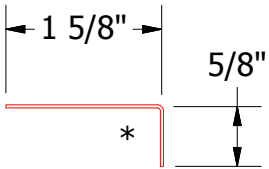
Horizontal Panel - Alternate Detail



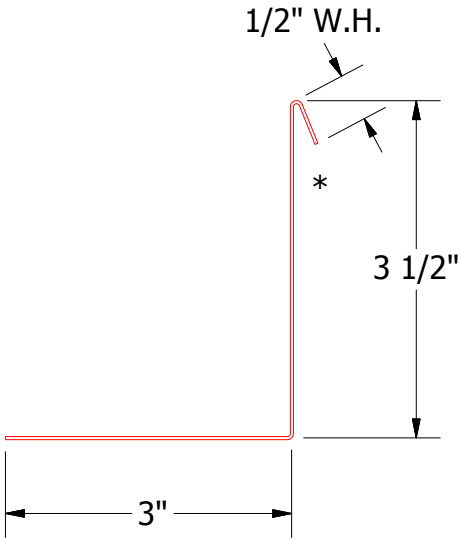
- Window
- Angle Trim with Return
- Backer Rod and Sealant
- Snap J Channel
- Angle Trim
- #10 x 1" Painted Hex Washer Head Screws with Washer
- Butyl Tape
- Grand V Panel
- Membrane Strip over Snap J Channel and Angle Trim
- Water and Air Resistive Barrier
- 1/2" Plywood (min.)
- Insulation
- Interior Finish
- #10 x 2" Painted Hex Washer Head Screw with Washer



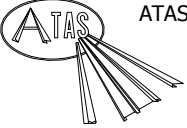
BGA039 - Snap J Channel



BGA680 - Angle Trim



BGA683 - Angle Trim with Return

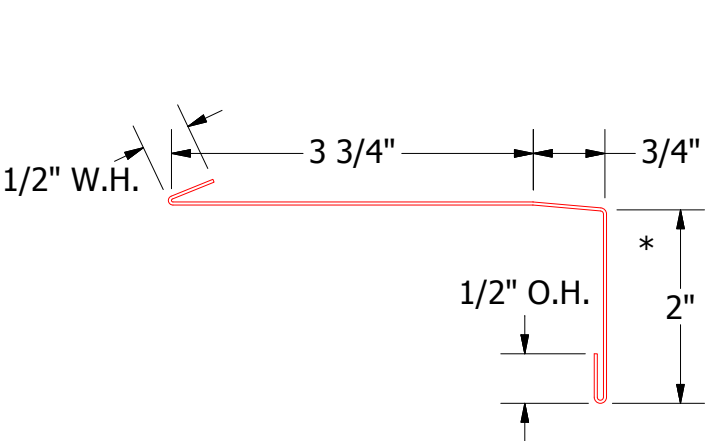
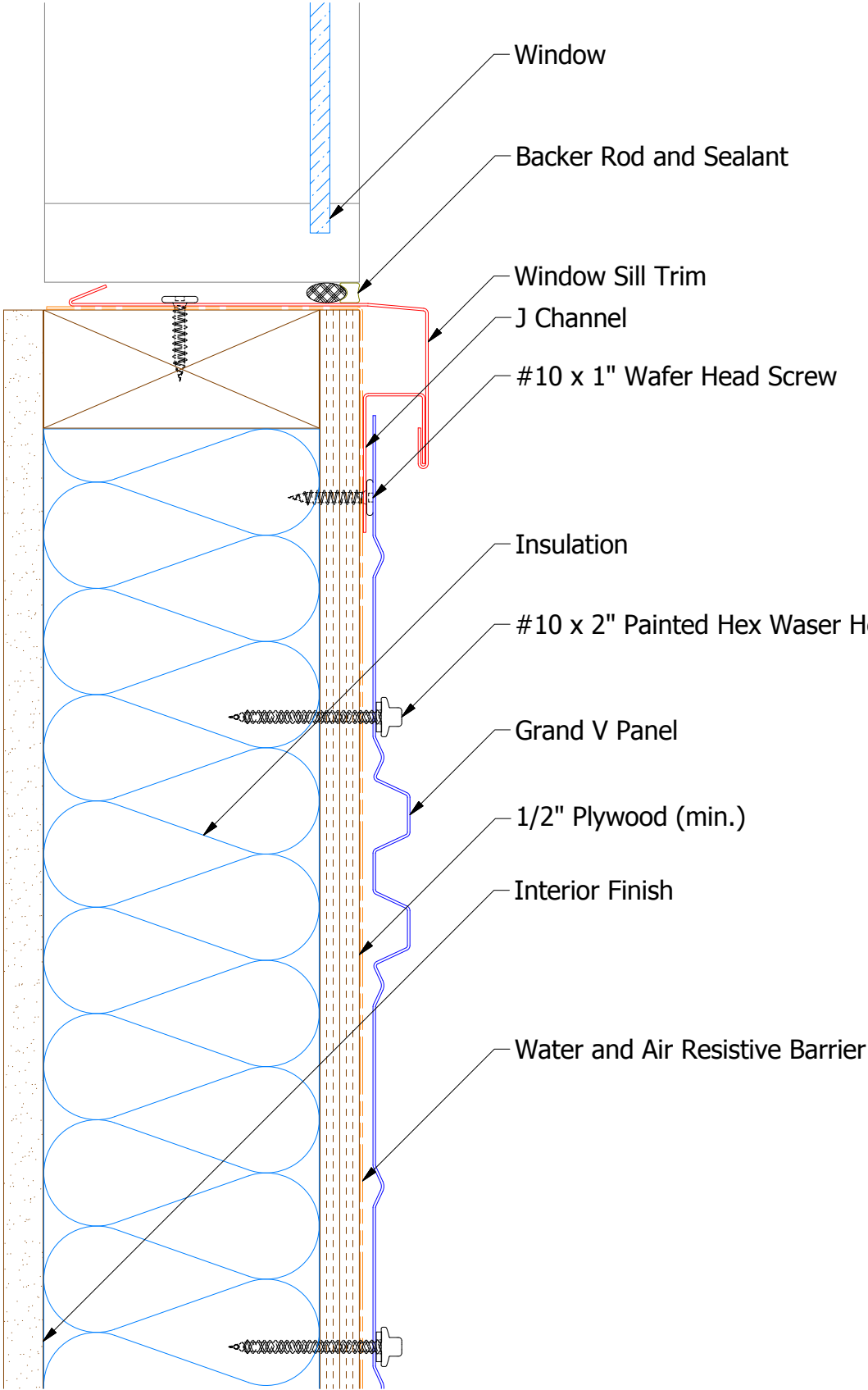


ATAS INTERNATIONAL, INC  
Allentown PA  
610-395-8445  
Mesa AZ  
480-558-7210

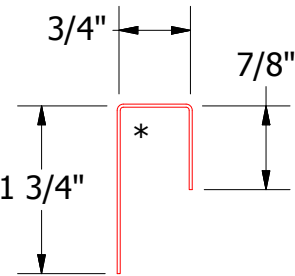
TITLE				Grand V Jamb Detail			
DWG. NO.		DR		DATE		6/14/2016	
APP		DAS		DATE		8/8/16	
MATERIAL		SH. SIZE		SCALE		X:X	

REV. NO.	DATE	DESCRIPTION OF REVISION	BY	APP

Horizontal Panel



BGA670 - Window Sill Trim



BGA270 - J Closure

				Grand V Window Sill Detail			
					DR	DATE	
					DMR	6/15/2016	
					APP	DATE	
					DAS	8/8/16	
REV. NO.	DATE	DESCRIPTION OF REVISION	BY	APP	SH. SIZE	SCALE	
					B	X:X	