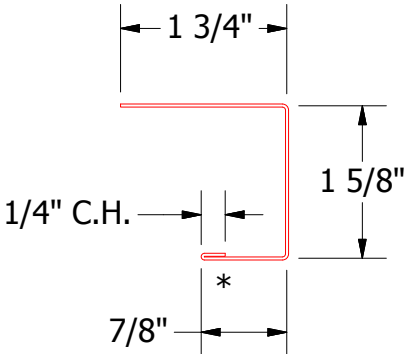
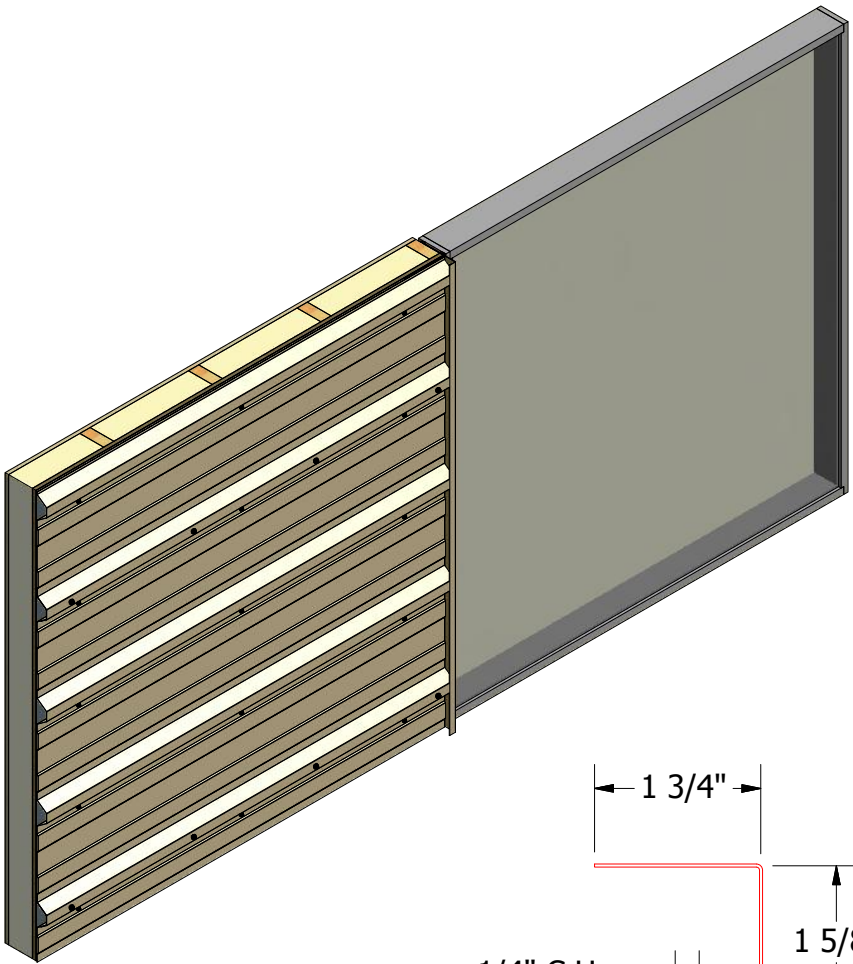
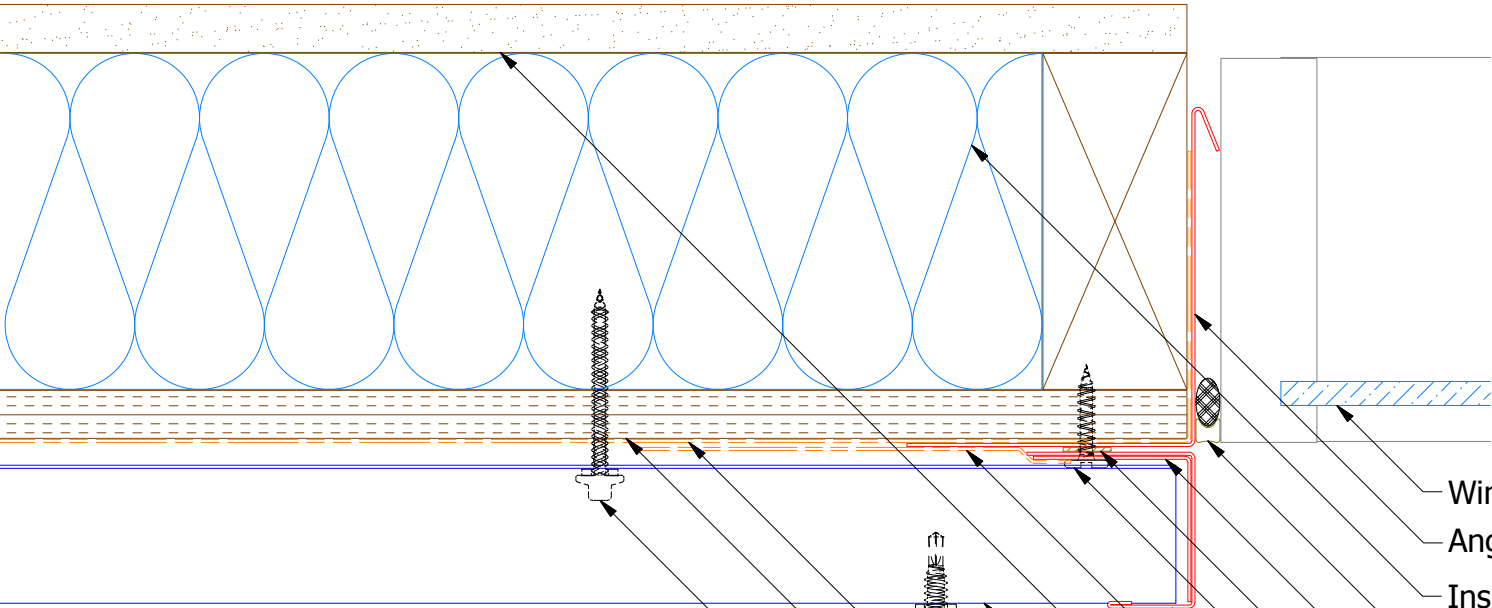
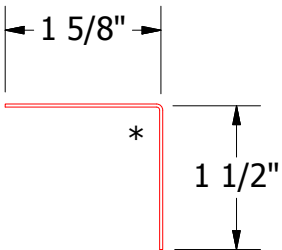


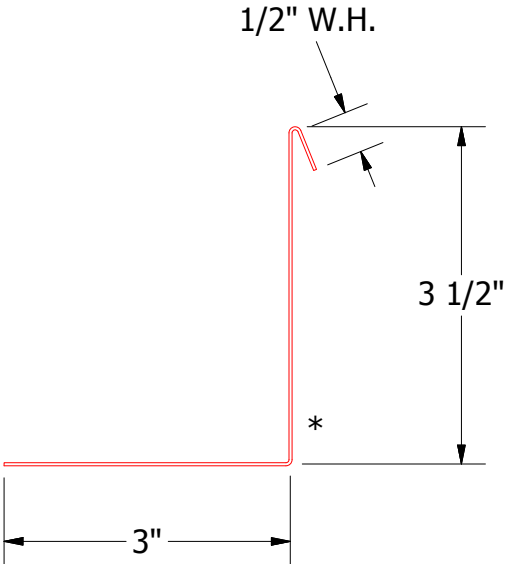
Horizontal Panel



BWA158 - J Channel



BWA680 - Angle Trim



BWA683 - Angle Trim with Return

- Window
- Angle Trim with Return
- Insulation
- Backer Rod and Sealant
- Angle Trim
- Butyl Tape
- #10 x 1" Wafer Head Screw
- J Channel
- Membrane Strip over J Channel and Angle Trim
- Interior Finish
- Grand R Panel
- #14 x 7/8" Painted Hex Washer Head Fastener with Washer (at Panel Lap)
- Water and Air Resistive Barrier
- 1/2" Plywood (min.)
- #10 x 2" Painted Hex Washer Head Screw with Washer

TITLE				Grand R Jamb Detail			
DWG. NO.				DR	KRK	DATE	2/4/2016
MATERIAL				APP	DAS	DATE	7/20/16
REV. NO.				SH. SIZE	B	SCALE	X:X



ATAS INTERNATIONAL, INC  
Allentown PA  
610-395-8445  
Mesa AZ  
480-558-7210