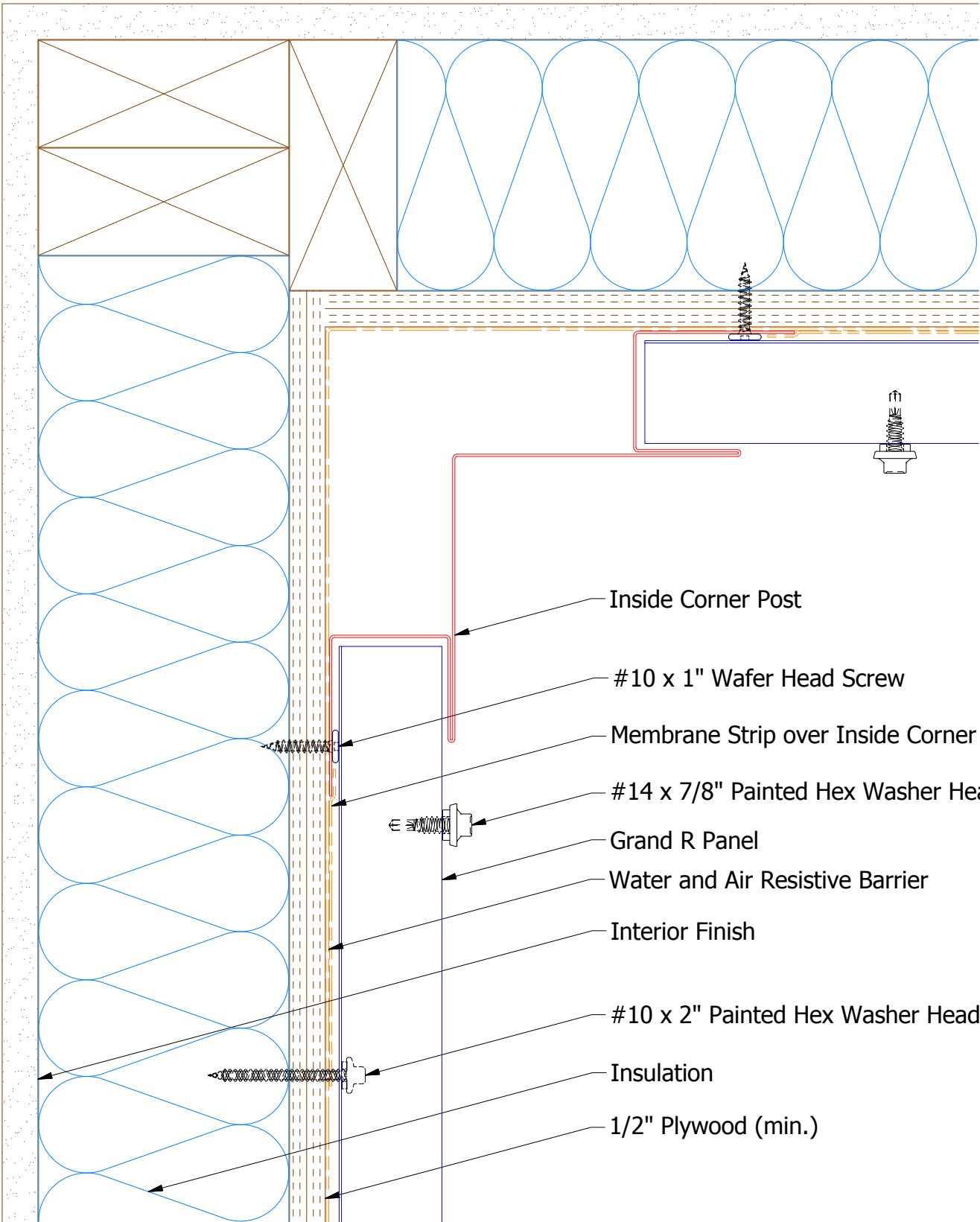
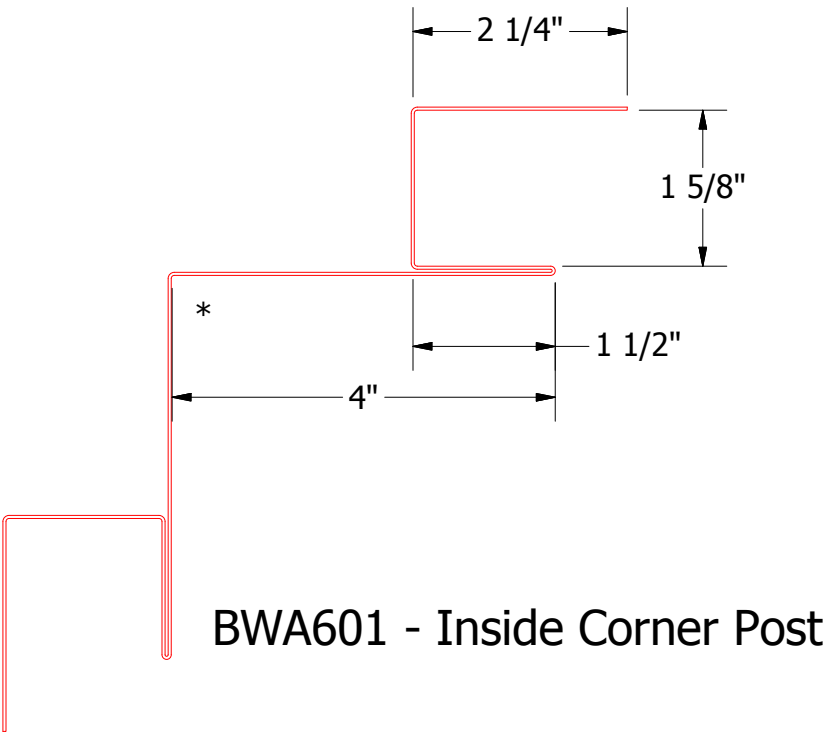
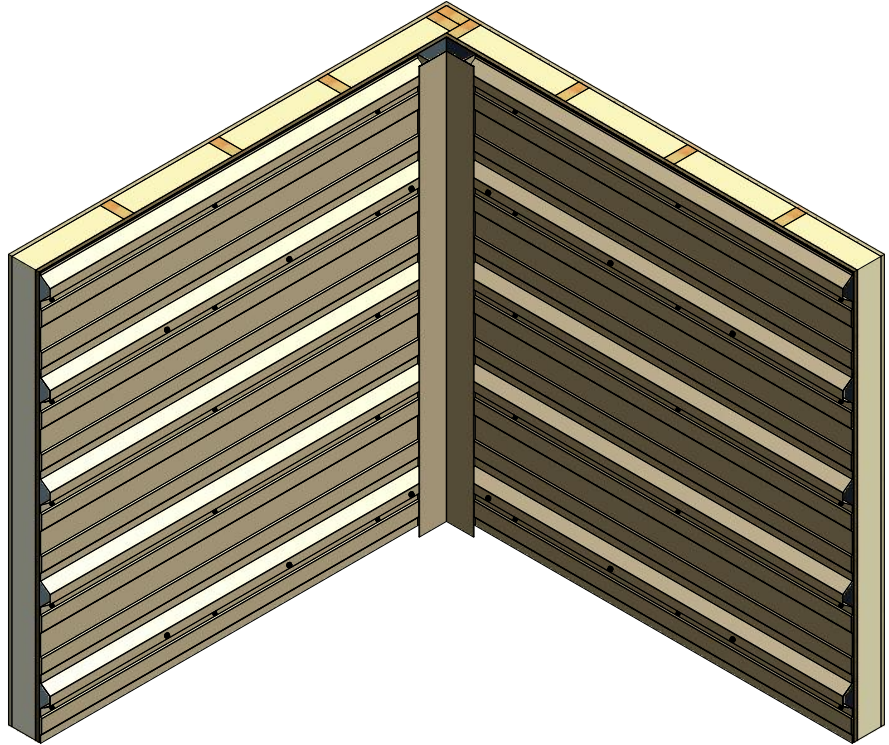


Horizontal Panel



- Inside Corner Post
- #10 x 1" Wafer Head Screw
- Membrane Strip over Inside Corner Post
- #14 x 7/8" Painted Hex Washer Head Fastener with Washer (at Panel Lap)
- Grand R Panel
- Water and Air Resistive Barrier
- Interior Finish
- #10 x 2" Painted Hex Washer Head Screw with Washer
- Insulation
- 1/2" Plywood (min.)



REV. NO.		DATE		DESCRIPTION OF REVISION		BY	APP
TITLE							
Grand R Inside Corner Detail							
DWG. NO.				DR	KRK	DATE	2/4/2016
MATERIAL				APP	DAS	DATE	7/20/16
				SH. SIZE	B	SCALE	X:X


ATAS INTERNATIONAL, INC
 Allentown PA
 610-395-8445
 Mesa AZ
 480-558-7210