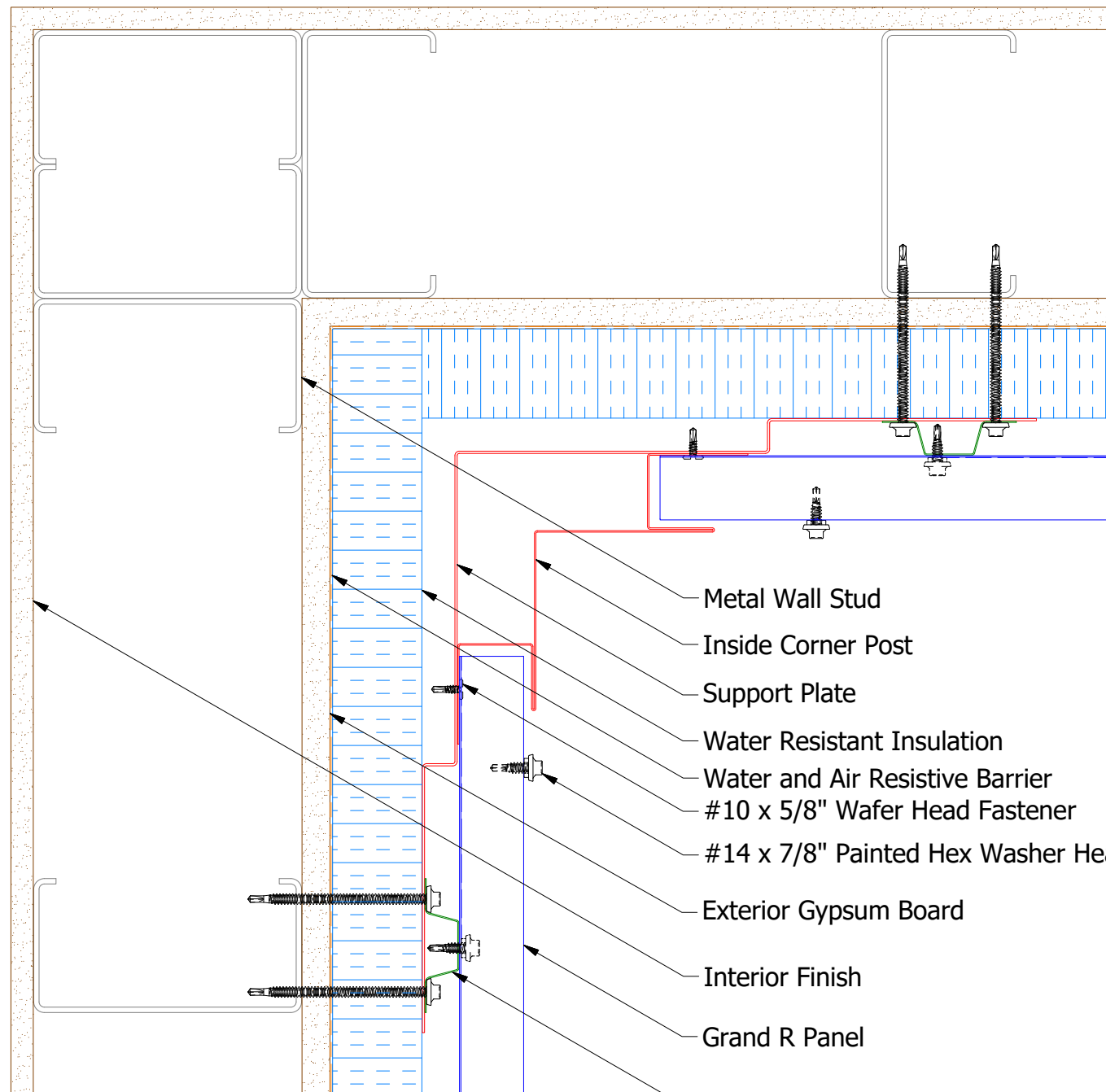
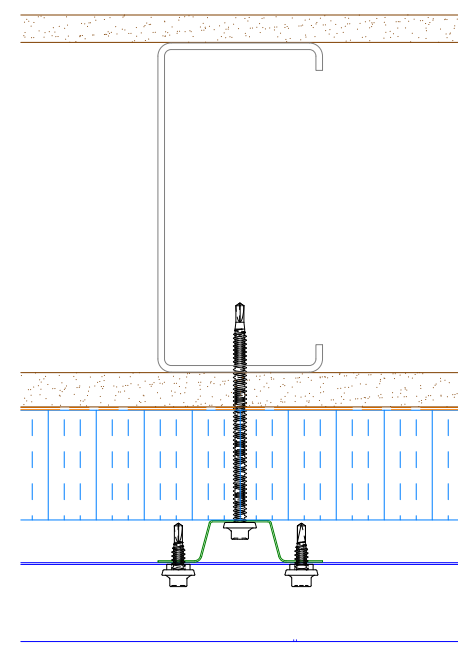


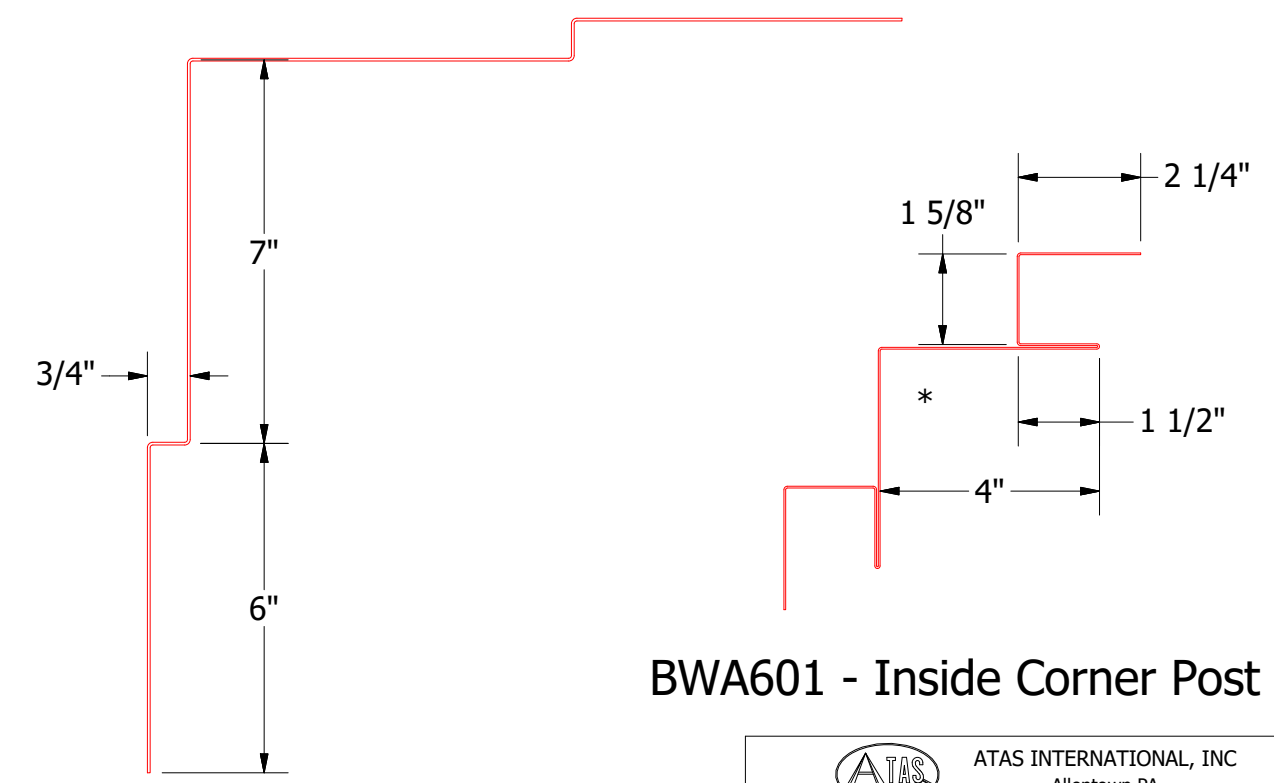
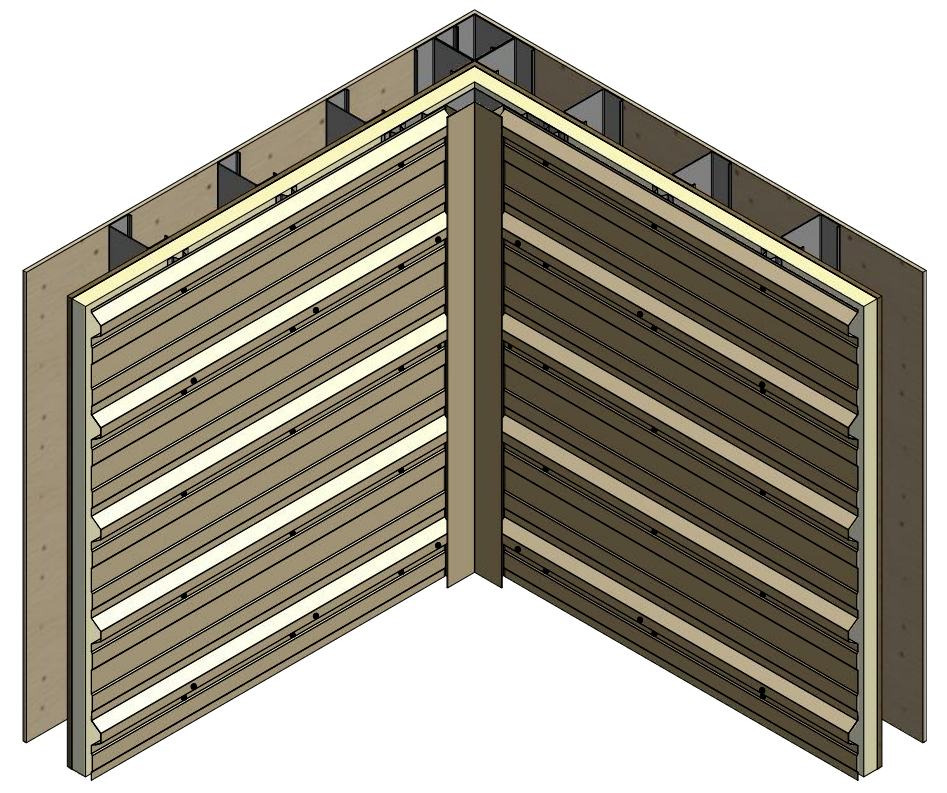
Horizontal Panel



- Metal Wall Stud
- Inside Corner Post
- Support Plate
- Water Resistant Insulation
- Water and Air Resistive Barrier
- #10 x 5/8" Wafer Head Fastener
- #14 x 7/8" Painted Hex Washer Head Fastener with Washer
- Exterior Gypsum Board
- Interior Finish
- Grand R Panel
- Vertical Subgirt



Alternative Subgirt Orientation



Support Plate

BWA601 - Inside Corner Post

NOTE: Optional 18 GA. Plate for Outside Corner Post is Available

ATAS INTERNATIONAL, INC
 Allentown PA
 610-395-8445
 Mesa AZ
 480-558-7210

TITLE					Grand R Panel Open Inside Corner Detail		
REV. NO.		DATE		DESCRIPTION OF REVISION		BY	APP
DWG. NO.		DR		DATE		8/12/2016	
MATERIAL		APP		DATE		DATE	
SH. SIZE		B		SCALE		X:X	