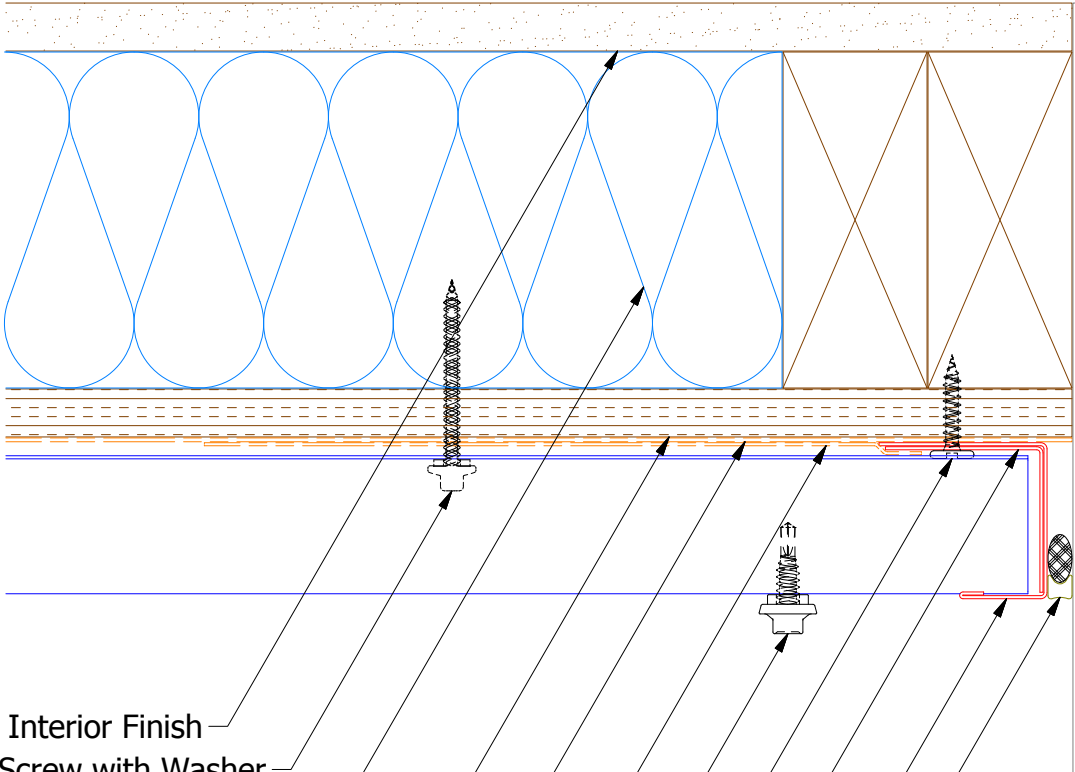
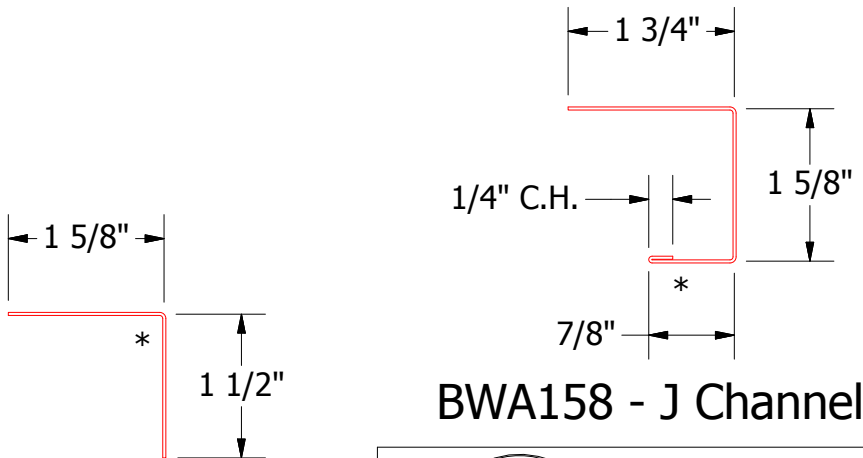
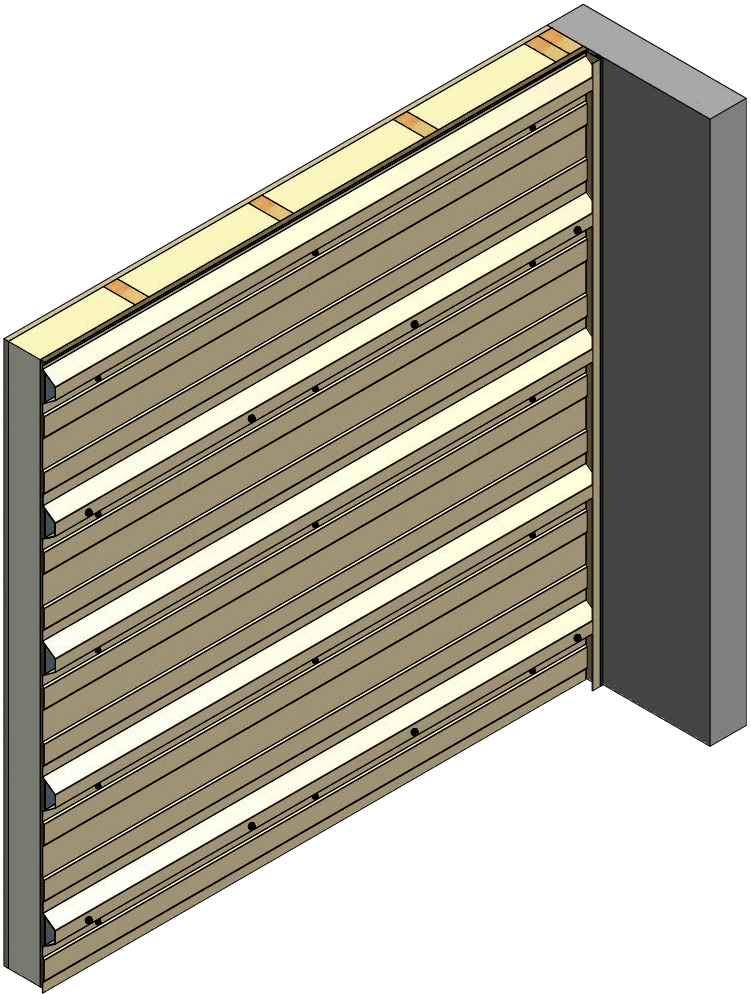


Horizontal Panel

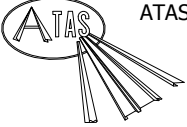


- Interior Finish
- #10 x 2" Painted Hex Washer Head Screw with Washer
- Insulation
- 1/2" Plywood (min.)
- Water and Air Resistive Barrier
- Membrane Strip over J Channel and Angle Trim
- #14 x 7/8" Painted Hex Washer Head Fastener with Washer (at Panel Lap)
- #10 x 1" Wafer Head Screw
- Angle Trim
- J Channel
- Backer Rod and Sealant



BWA680 - Ange Trim

BWA158 - J Channel



ATAS INTERNATIONAL, INC  
Allentown PA  
610-395-8445  
Mesa AZ  
480-558-7210

TITLE			
Grand R Endwall Detail			
DWG. NO.	DR	KRK	DATE
	APP	DAS	DATE
MATERIAL		SH. SIZE	SCALE
		B	X:X

REV. NO.	DATE	DESCRIPTION OF REVISION	BY	APP