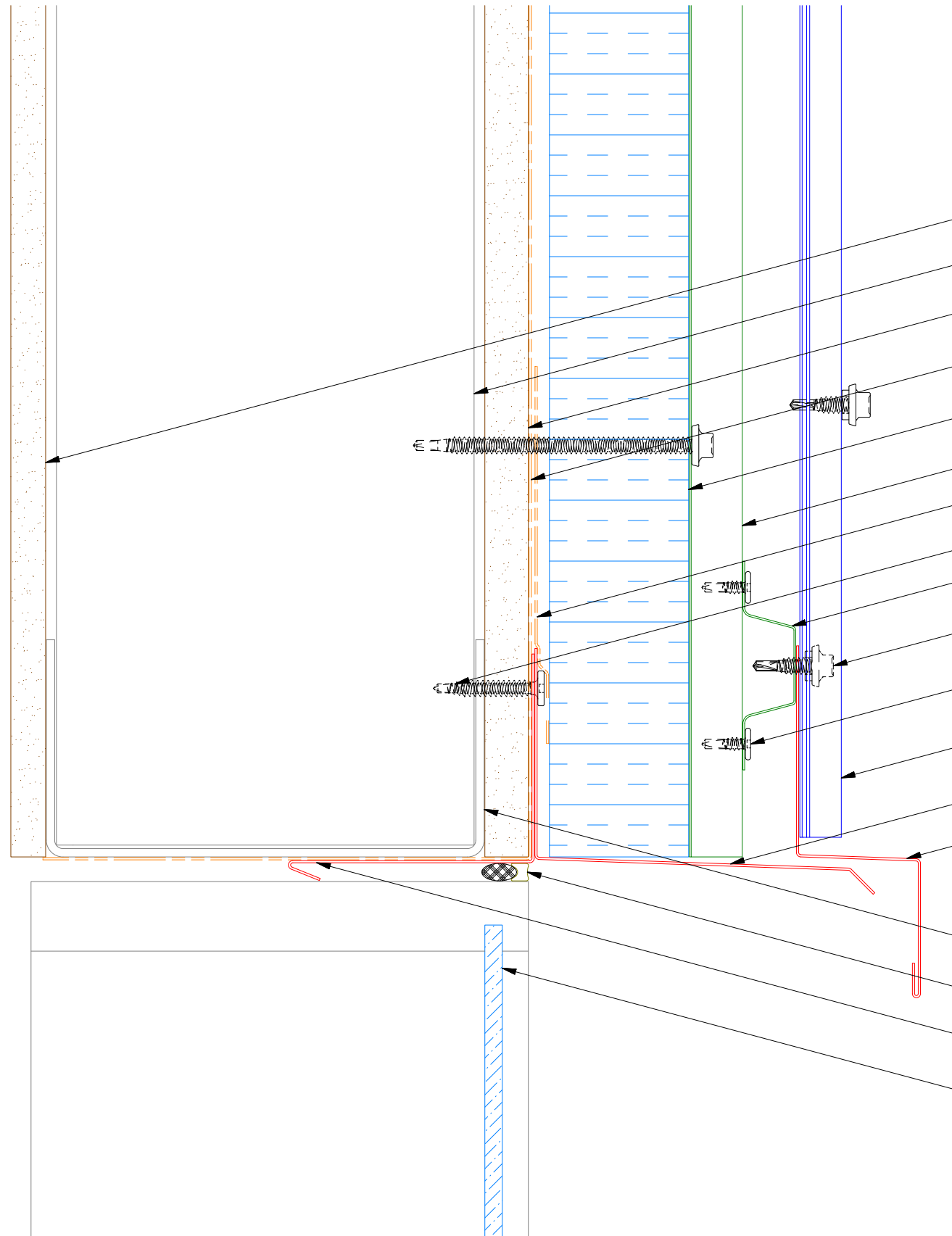
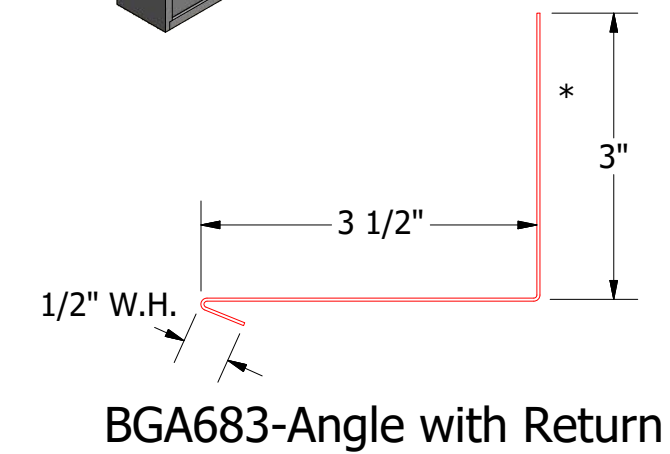
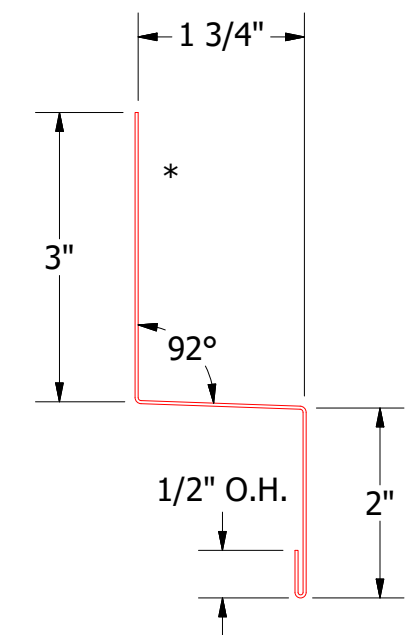
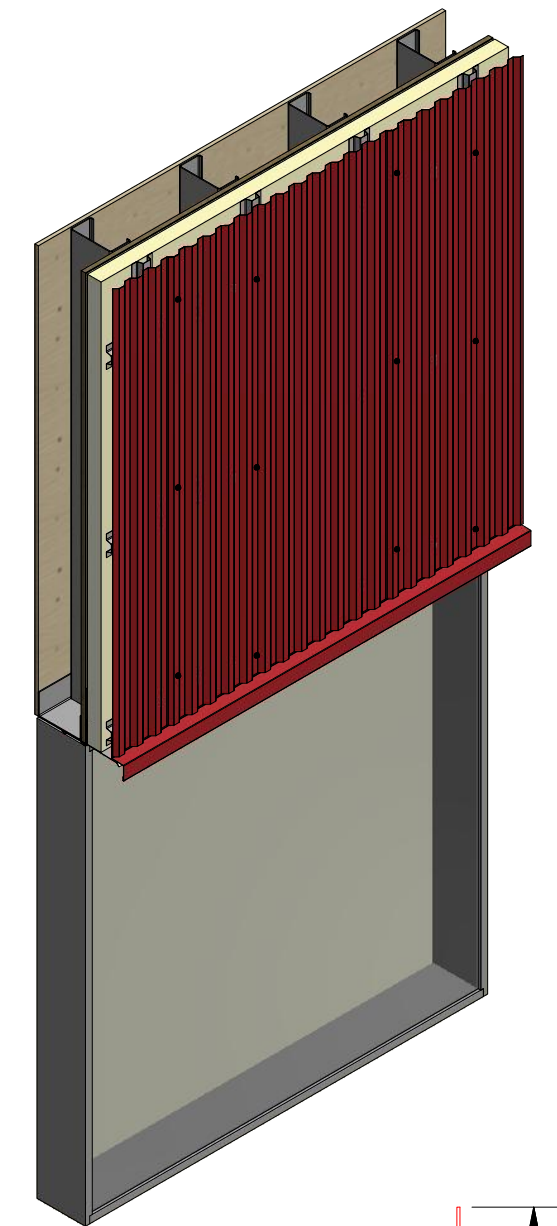
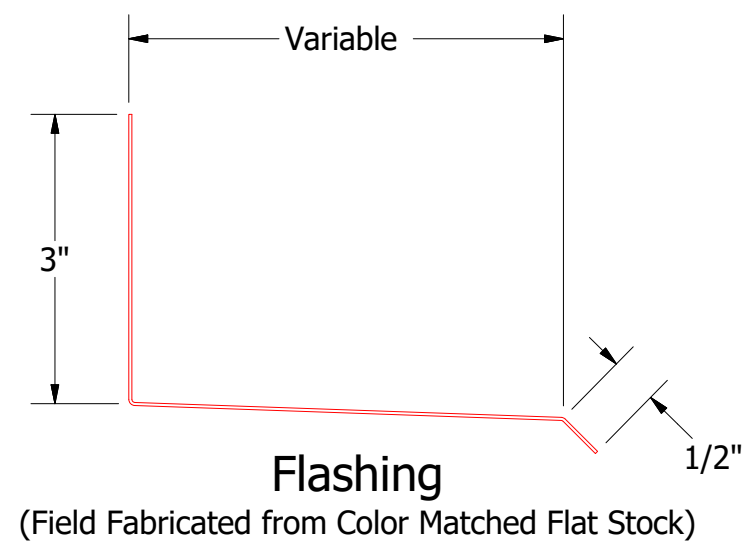


Vertical Panel



- Interior Finish
- Metal Wall Stud
- Exterior Gypsum Board
- Water and Air Resistive Barrier
- Water Resistant Insulation
- Vertical Subgirt
- Membrane Strip over Fastener Flashing
- Fastener Flashing (by others)
- Horizontal Subgirt
- #14 x 7/8" Painted Hex Washer Head Fastener with Washer
- #10 x 5/8" Wafer Head Fastener
- Grand C Panel
- Flashing by others
- Head Trim
- Metal Stud
- Backer Rod and Sealant
- Angle with Return
- Window



ATAS ATAS INTERNATIONAL, INC
 Allentown PA
 610-395-8445
 Mesa AZ
 480-558-7210

TITLE				Grand C Panel Open Head Detail			
DWG. NO.		DR		DATE		9/13/2016	
APP		DMR		DATE			
MATERIAL				SH. SIZE		SCALE	
				B		X:X	

REV. NO.	DATE	DESCRIPTION OF REVISION	BY	APP