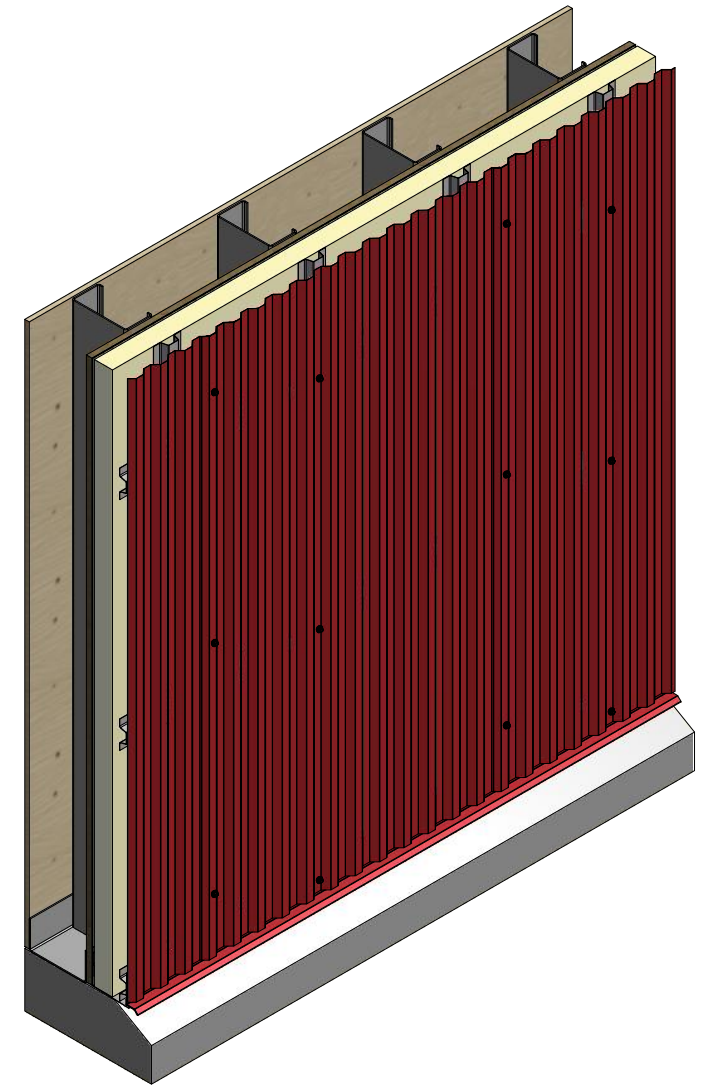
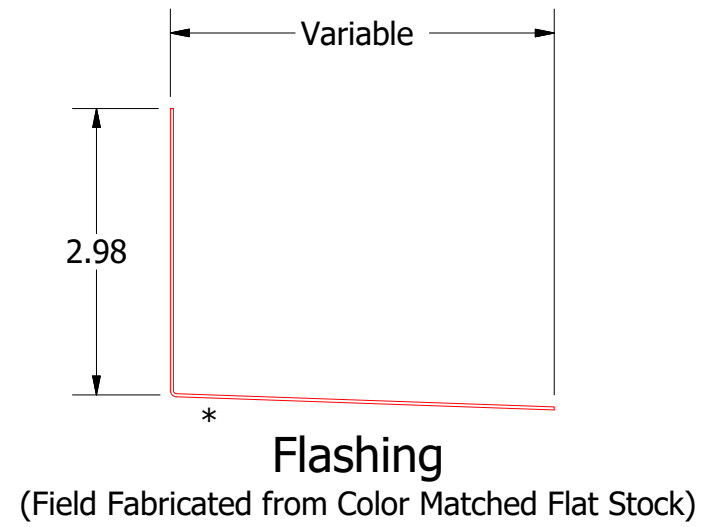
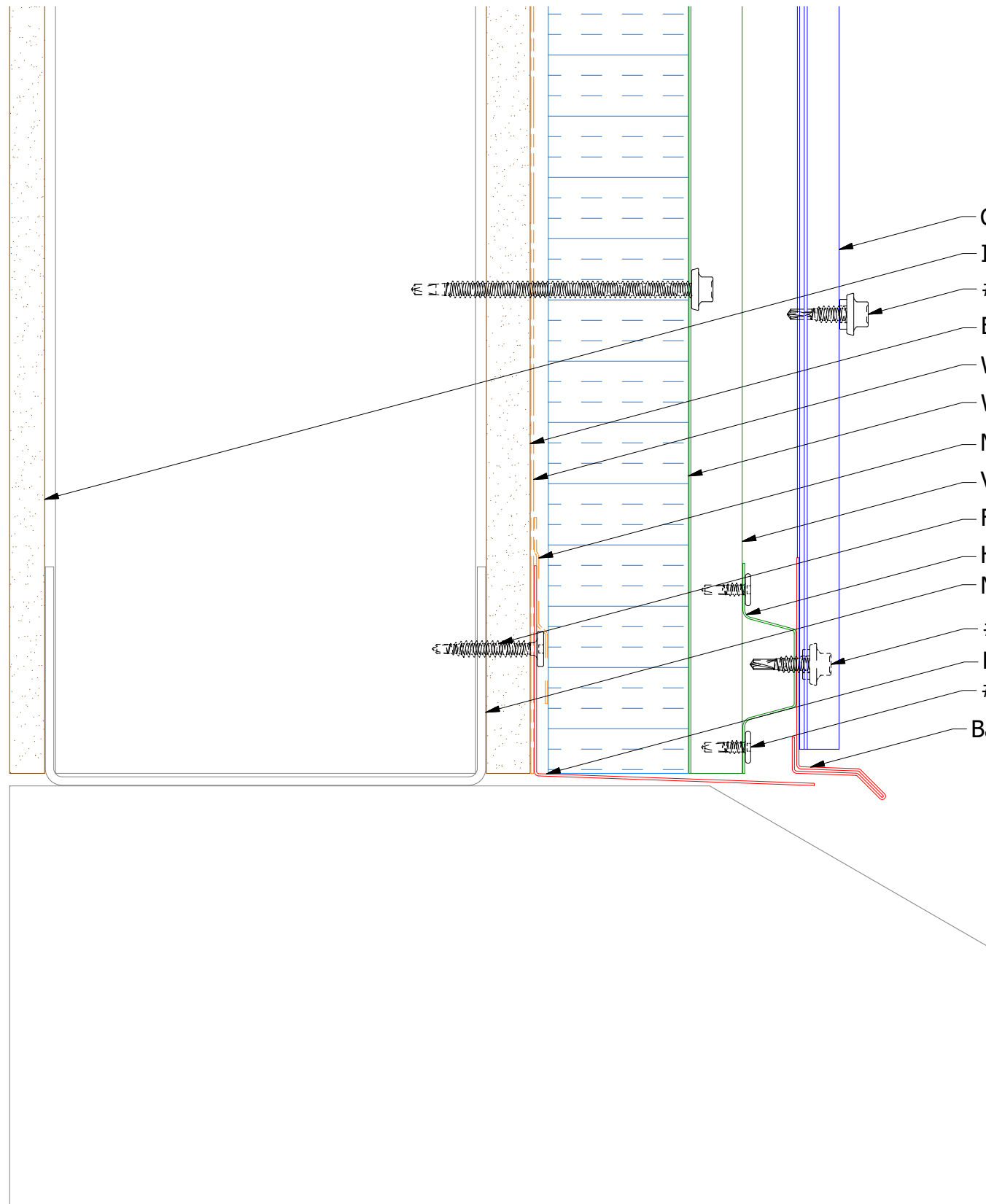
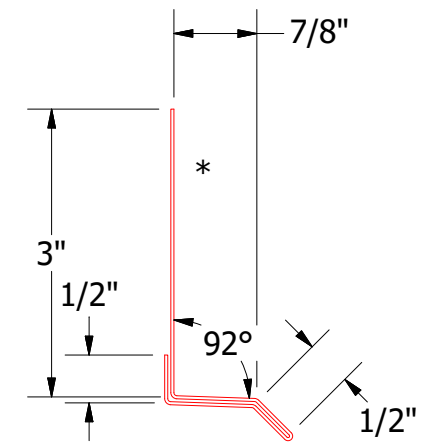


Vertical Panel



- Grand C Panel
- Interior Finish
- #14 x 7/8" Painted Hex Washer Head Fastener with Washer
- Exterior Gypsum Board
- Water and Air Resistive Barrier
- Water Resistant Insulation
- Membrane Strip (by others)
- Vertical Subgirt
- Fastener Flashing (by others)
- Horizontal Subgirt
- Metal Stud
- #14 x 7/8" Painted Hex Washer Head Fastener with Washer
- Flashing by others
- #10 x 5/8" Wafer Head fastener
- Base Trim



REV. NO.	DATE	DESCRIPTION OF REVISION	BY	APP

ATAS ATAS INTERNATIONAL, INC
 Allentown PA
 610-395-8445
 Mesa AZ
 480-558-7210

TITLE: **Grand C Panel Base Detail**

DWG. NO.	DR	DATE
	DMR	9/8/2016
MATERIAL	APP	DATE
SH. SIZE	B	SCALE
		X:X