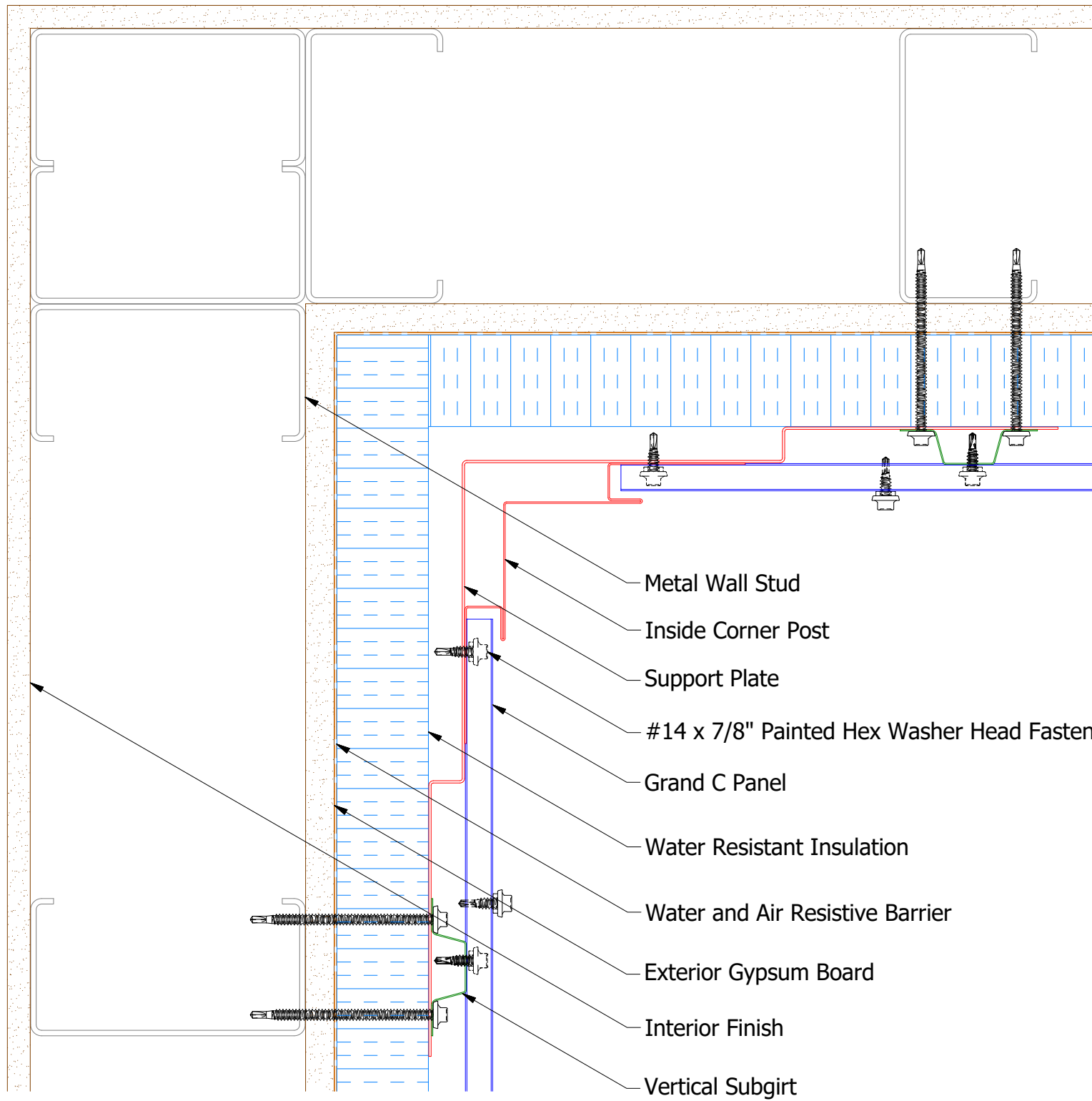
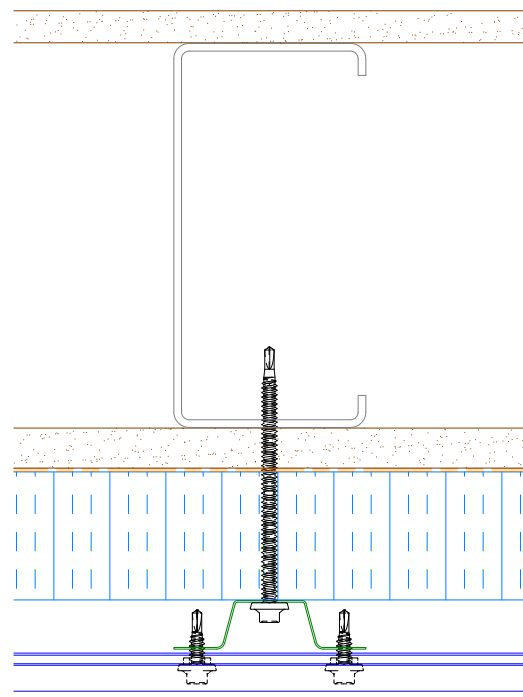


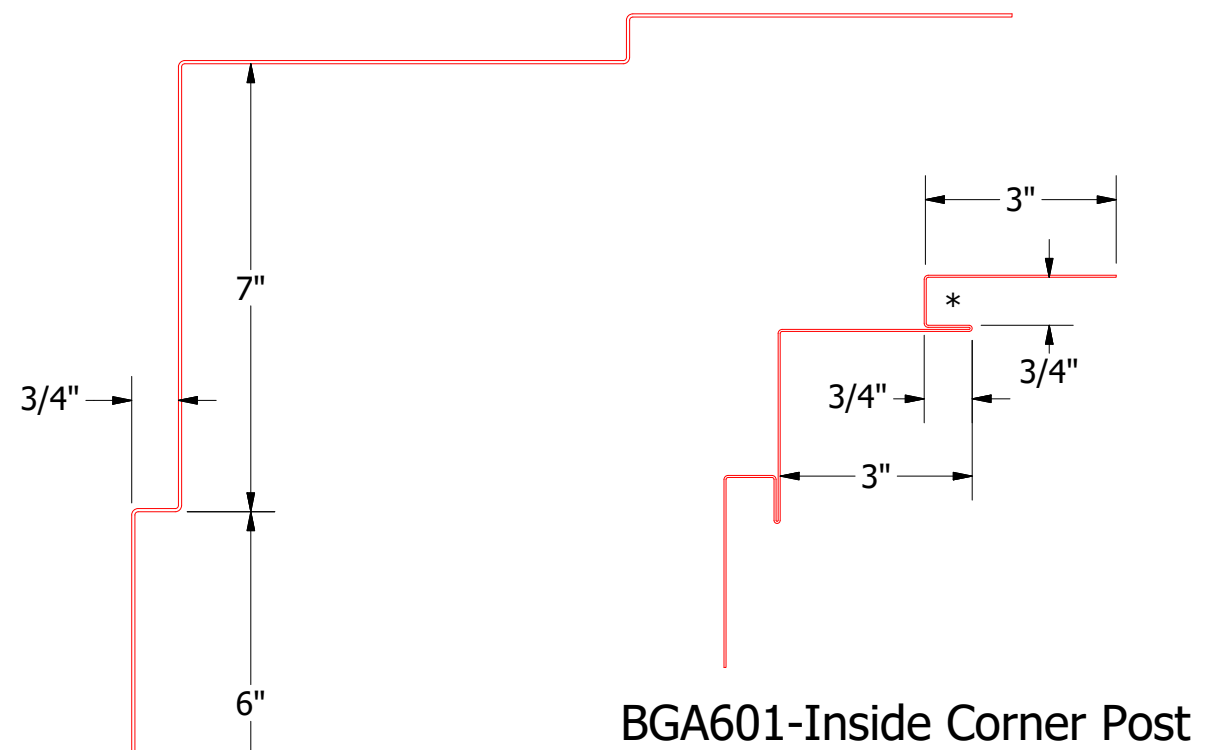
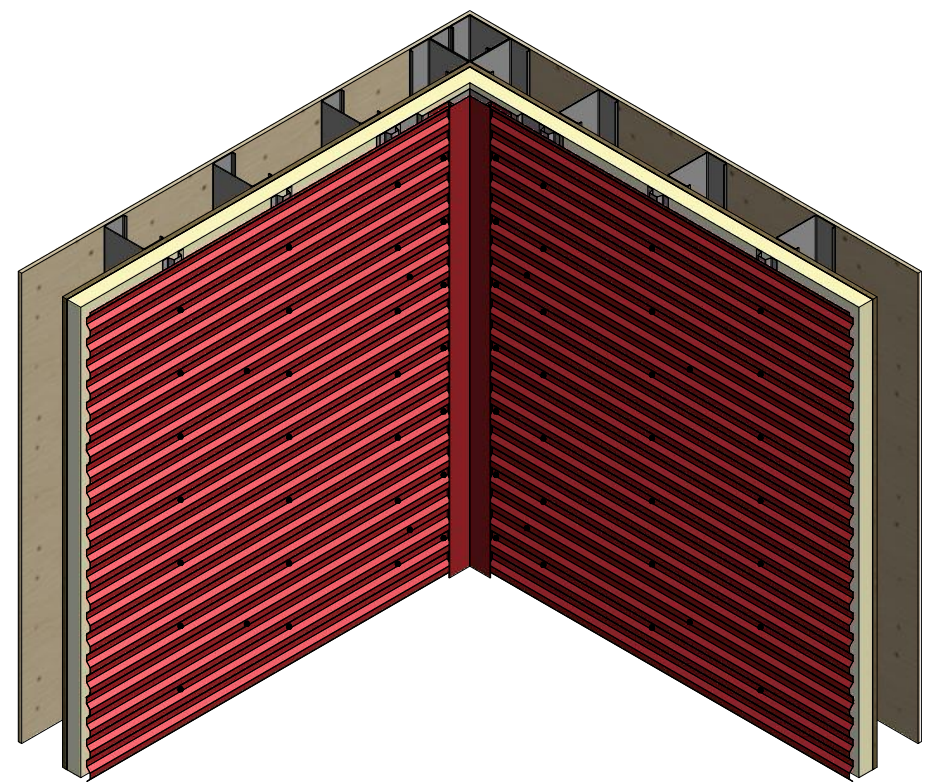
Horizontal Panel



- Metal Wall Stud
- Inside Corner Post
- Support Plate
- #14 x 7/8" Painted Hex Washer Head Fastener with Washer
- Grand C Panel
- Water Resistant Insulation
- Water and Air Resistive Barrier
- Exterior Gypsum Board
- Interior Finish
- Vertical Subgirt




Alternate Subgirt Orientation



Support Plate

BGA601-Inside Corner Post

NOTE: Optional 18 GA. Plate for Outside Corner Post is Available

 ATAS INTERNATIONAL, INC Allentown PA 610-395-8445 Mesa AZ 480-558-7210		TITLE	Grand C Panel Inside Corner Detail	
		DWG. NO.	DR	DATE
		APP	DMR	9/14/2016
			DATE	
REV. NO.	DATE	DESCRIPTION OF REVISION	BY	APP
			SH. SIZE	B
			SCALE	X:X