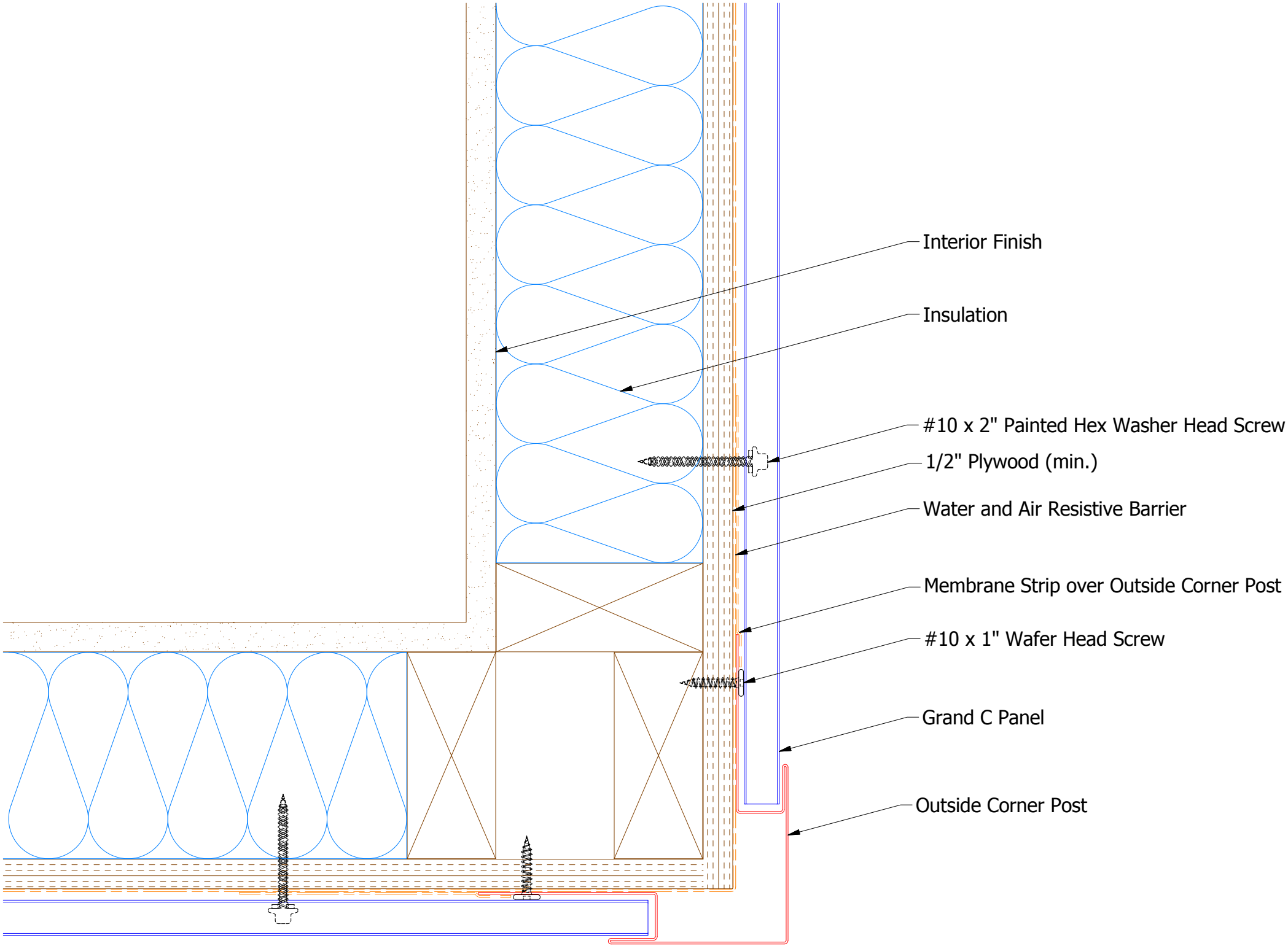
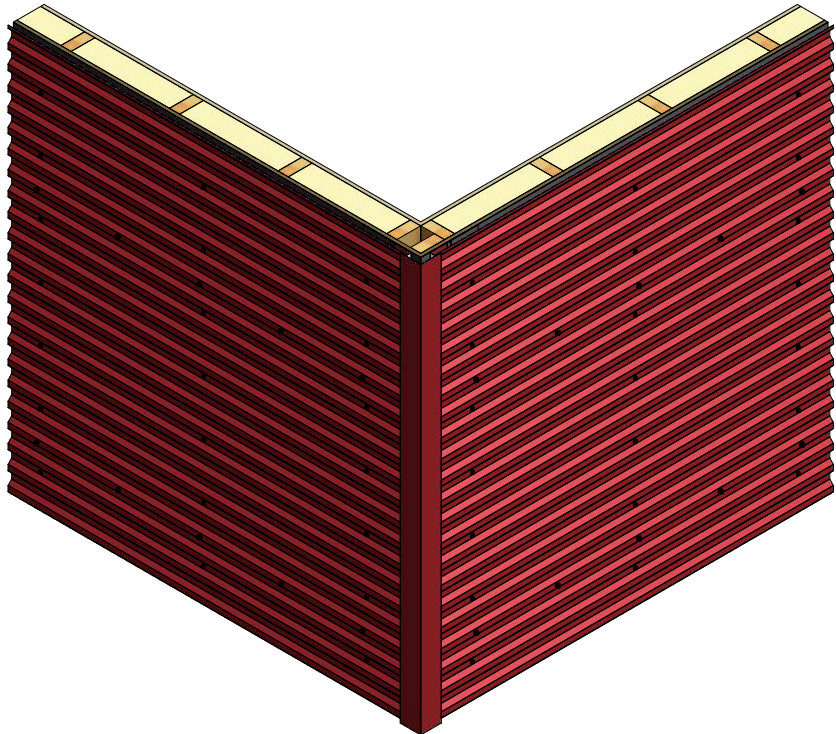
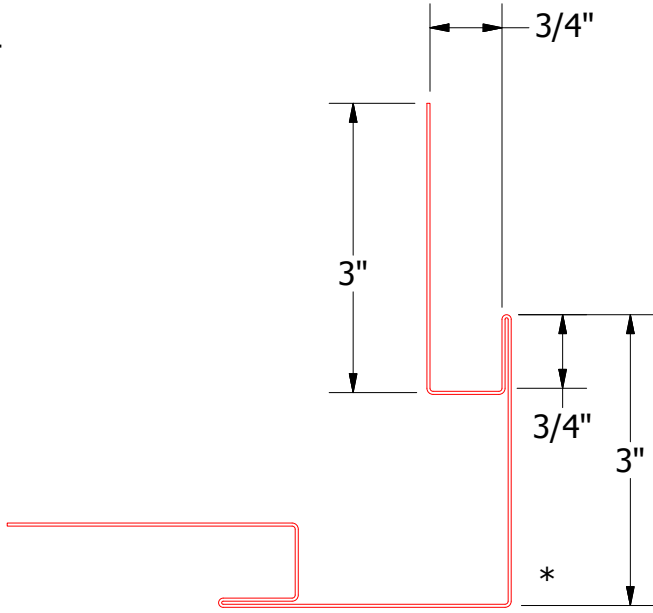


Horizontal Panel



- Interior Finish
- Insulation
- #10 x 2" Painted Hex Washer Head Screw with Washer
- 1/2" Plywood (min.)
- Water and Air Resistive Barrier
- Membrane Strip over Outside Corner Post
- #10 x 1" Wafer Head Screw
- Grand C Panel
- Outside Corner Post



BGA602 - Outside Corner Post


ATAS INTERNATIONAL, INC
 Allentown PA
 610-395-8445
 Mesa AZ
 480-558-7210

TITLE				Grand C Outside Corner Detail			
DWG. NO.		DR		DATE		DATE	
		KRK		2/18/2016			
MATERIAL		APP		DATE		DATE	
		DAS		8/8/16			
REV. NO.		SH. SIZE		SCALE		SCALE	
		B		X:X			