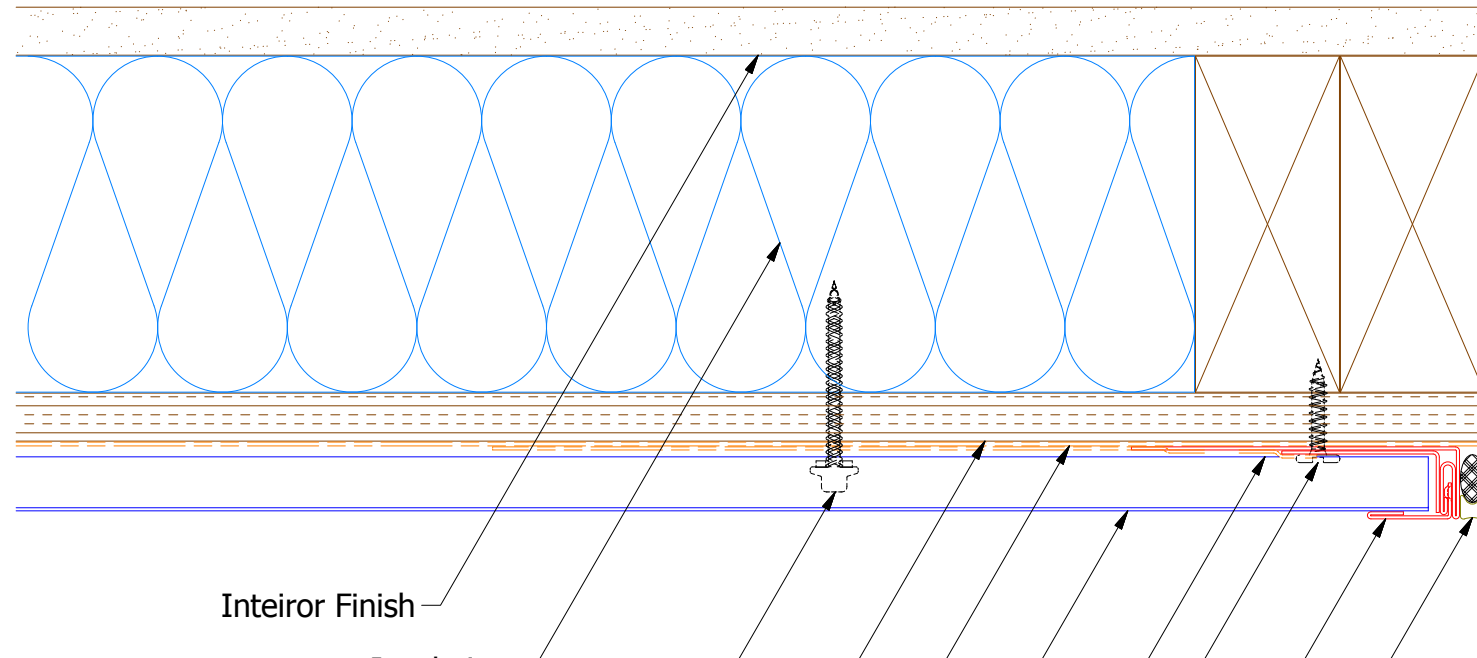
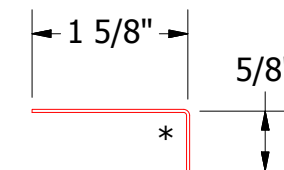
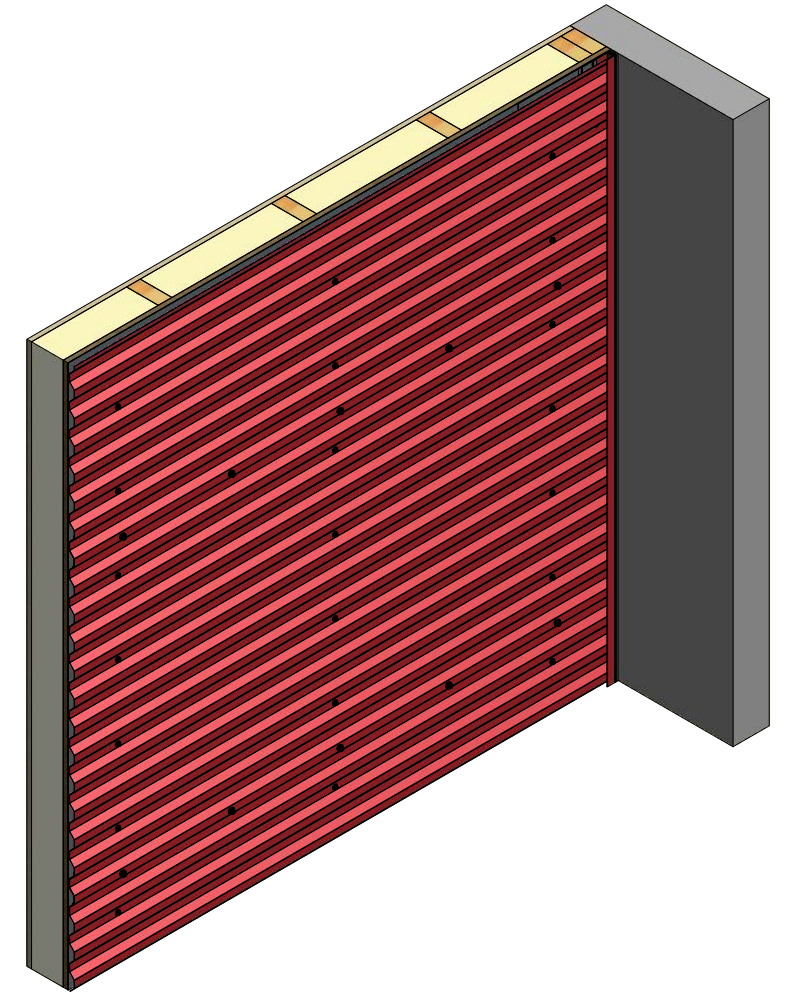


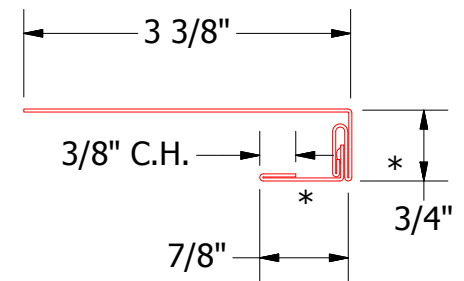
Horizontal Panel - Alternate Detail



- Interior Finish
- Insulation
- #10 x 2" Painted Hex Washer Head Screw with Washer
- 1/2" Plywood (min.)
- Water and Air Resistive Barrier
- Grand C Panel
- Membrane Strip over J Channel and Angle Trim
- #10 x 1" Wafer Head Screw
- Snap J Channel
- Backer Rod and Sealant



BGA680 - Angle Trim



BGA309 - Snap J Channel

| | | | | | | | |
|----------|------|-------------------------|----|-----|------------------------|----------|-----------|
| REV. NO. | DATE | DESCRIPTION OF REVISION | BY | APP | TITLE | DR | DATE |
| | | | | | Grand C Endwall Detail | KRK | 2/17/2016 |
| | | | | | | DAS | 8/8/16 |
| | | | | | MATERIAL | SH. SIZE | SCALE |
| | | | | | | B | X:X |


ATAS INTERNATIONAL, INC
 Allentown PA
 610-395-8445
 Mesa AZ
 480-558-7210