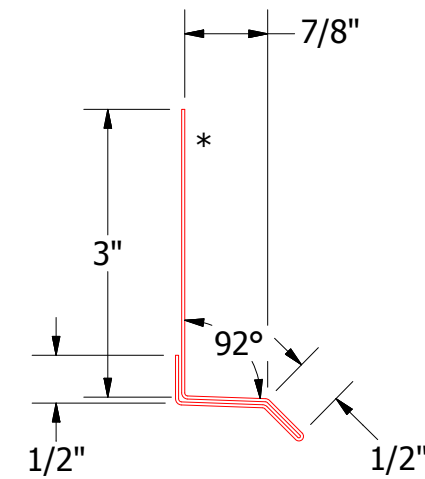
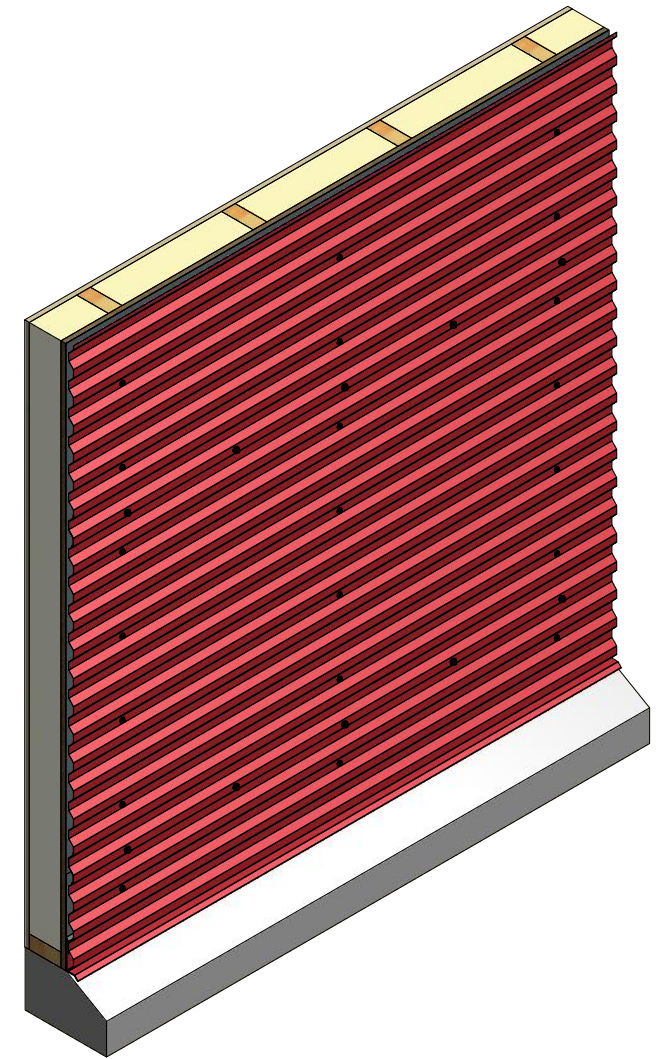
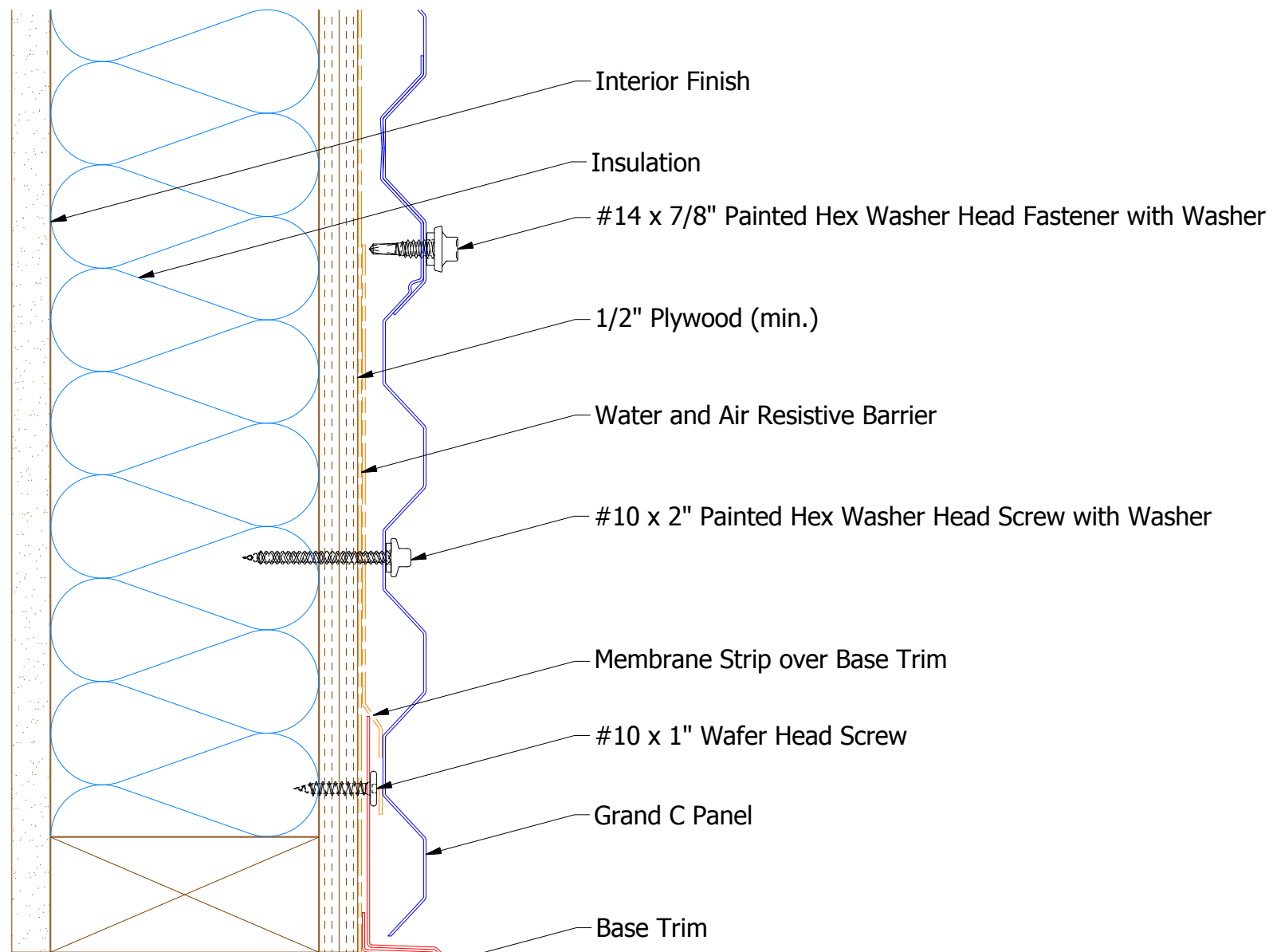


# Horizontal Panel



**BGA661 - Base Trim**

**ATAS** ATAS INTERNATIONAL, INC  
 Allentown PA  
 610-395-8445  
 Mesa AZ  
 480-558-7210

**Grand C Base Detail**

REV. NO.		DATE	DESCRIPTION OF REVISION	BY	APP	TITLE	
						Grand C Base Detail	
DWG. NO.		DR			KRK	DATE	2/17/2016
		APP			DAS	DATE	8/8/16
MATERIAL		SH. SIZE			B	SCALE	X:X