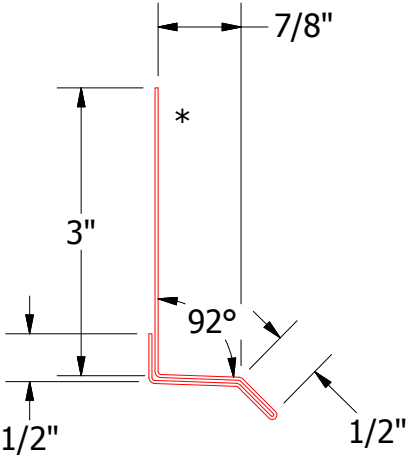
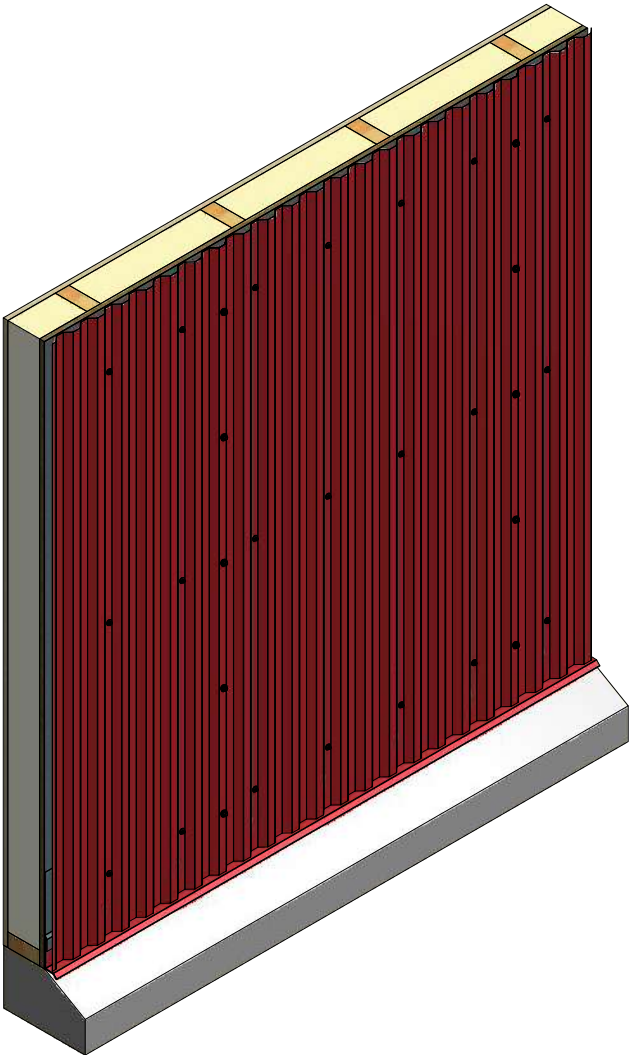
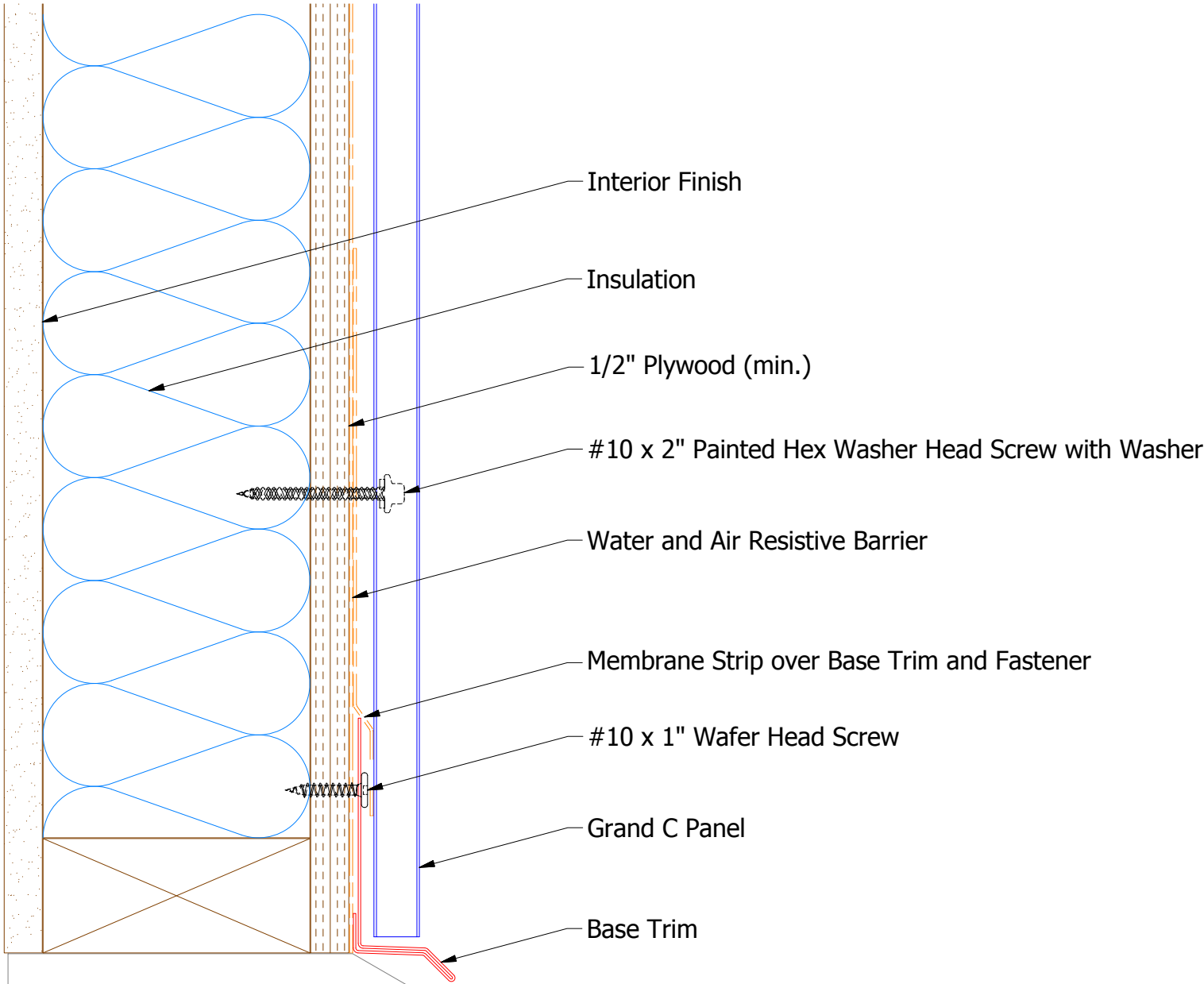



ATAS INTERNATIONAL, INC
Allentown PA
610-395-8445
Mesa AZ
480-558-7210

				TITLE	
				Grand C Panel Profile Detail	
				DWG. NO.	DR KRK DATE 2/19/2016
					APP DATE
				MATERIAL	
				SH. SIZE	B SCALE X:X
REV. NO.	DATE	DESCRIPTION OF REVISION		BY	APP

Vertical Panel

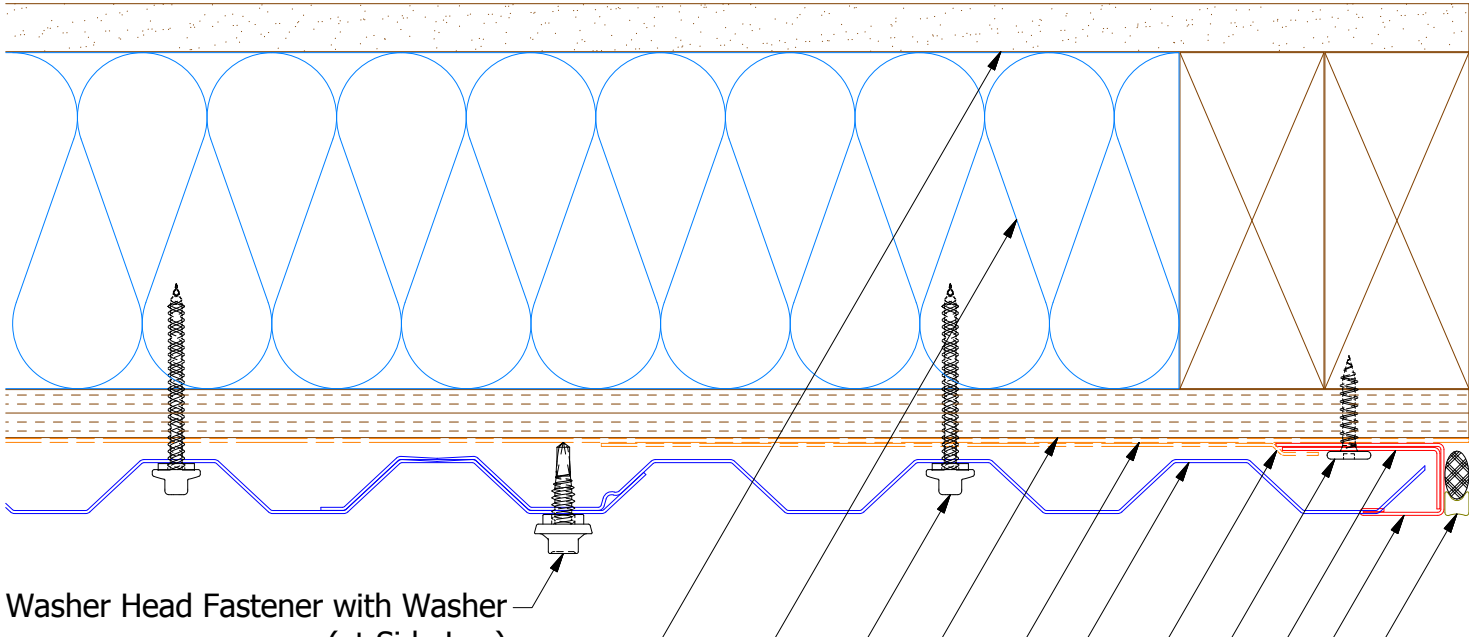


BGA661 - Base Trim

		ATAS INTERNATIONAL, INC Allentown PA 610-395-8445 Mesa AZ 480-558-7210	
TITLE Grand C Base Detail			
DWG. NO.		DR KRK	DATE 2/17/2016
MATERIAL		APP DAS	DATE 8/8/16
		SH. SIZE B	SCALE X:X

REV. NO.	DATE	DESCRIPTION OF REVISION	BY	APP	

Vertical Panel



#14 x 7/8" Painted Hex Washer Head Fastener with Washer (at Side Lap)

Interior Finish

Insulation

#10 x 2" Painted Hex Washer Head Screw with Washer 1/2" Plywood (min.)

Water and Air Resistive Barrier

Grand C Panel

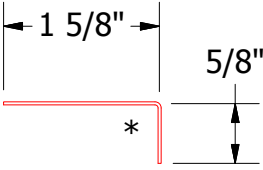
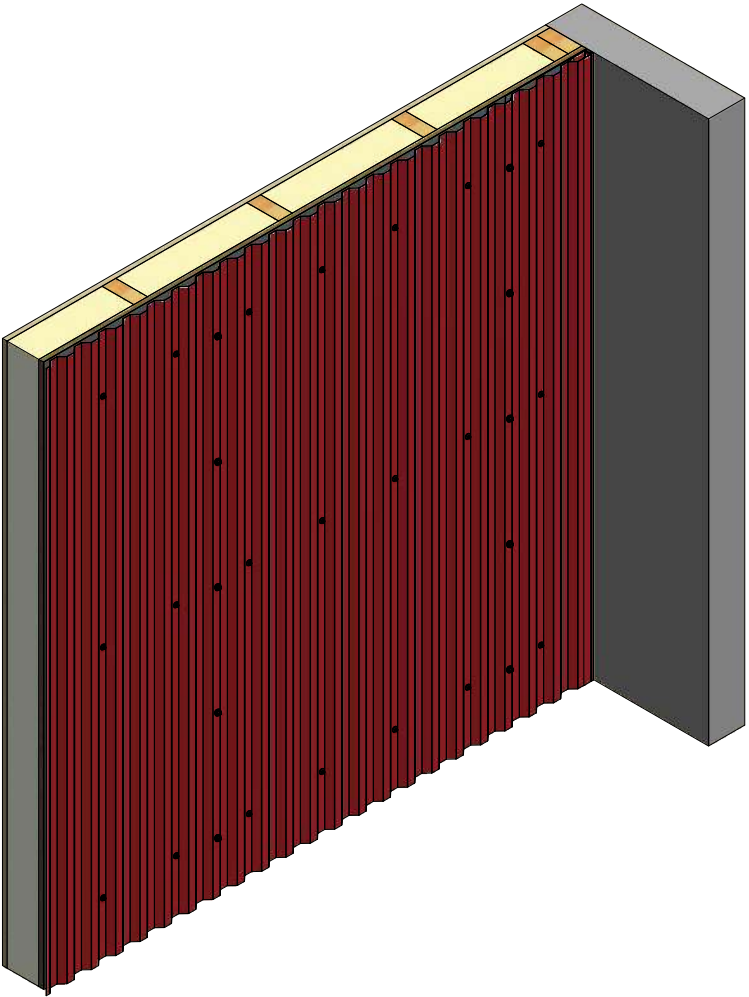
Membrane Strip over J Channel and Angle Trim

#10 x 1" Wafer Head Screw

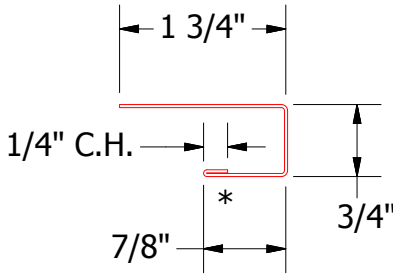
Angle Trim

J Channel

Backer Rod and Sealant



BGA680 - Angle Trim



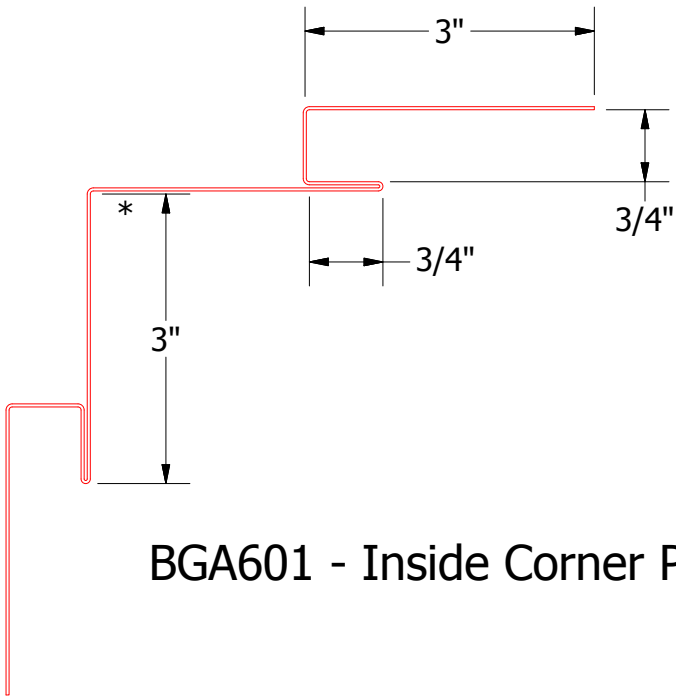
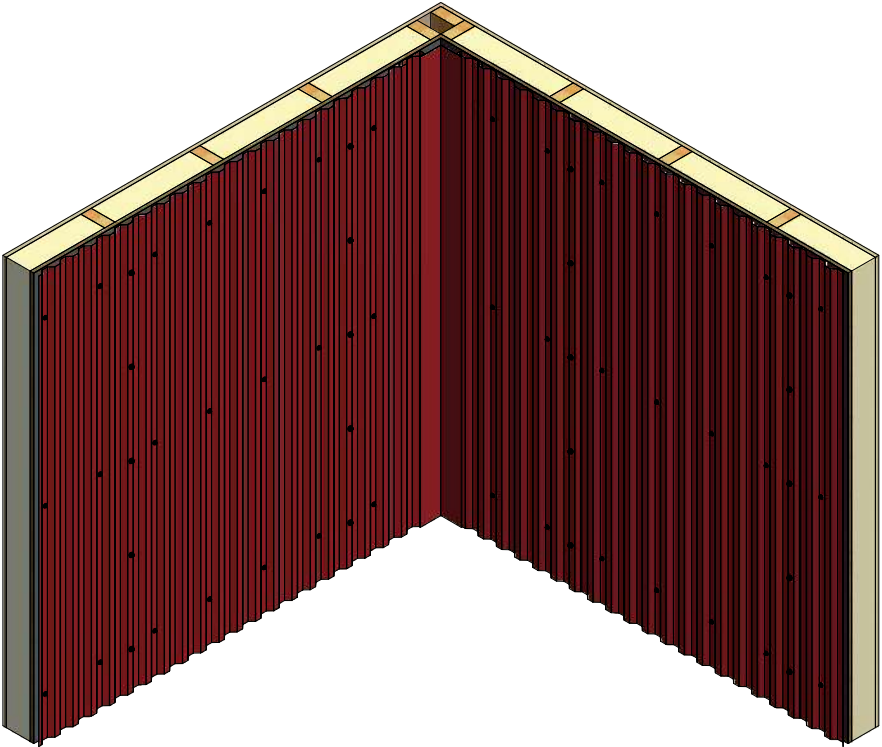
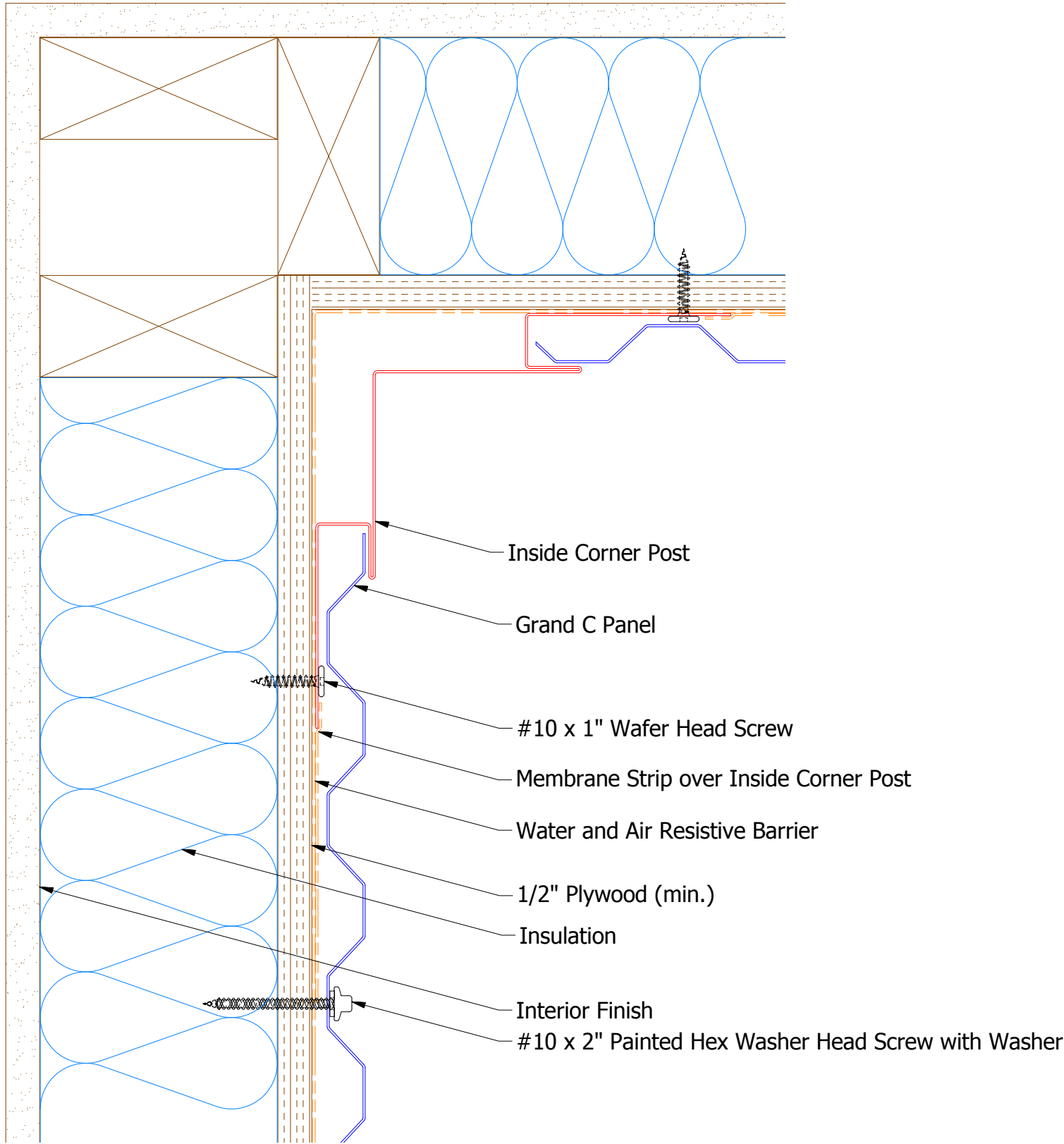
BGA034 - J Channel

				TITLE			
				Grand C Endwall Detail			
				DWG. NO.		DR	DATE
						KRK	2/17/2016
						APP	DATE
						DAS	8/8/16
				MATERIAL		SH. SIZE	SCALE
						B	X:X
REV. NO.	DATE	DESCRIPTION OF REVISION		BY	APP		



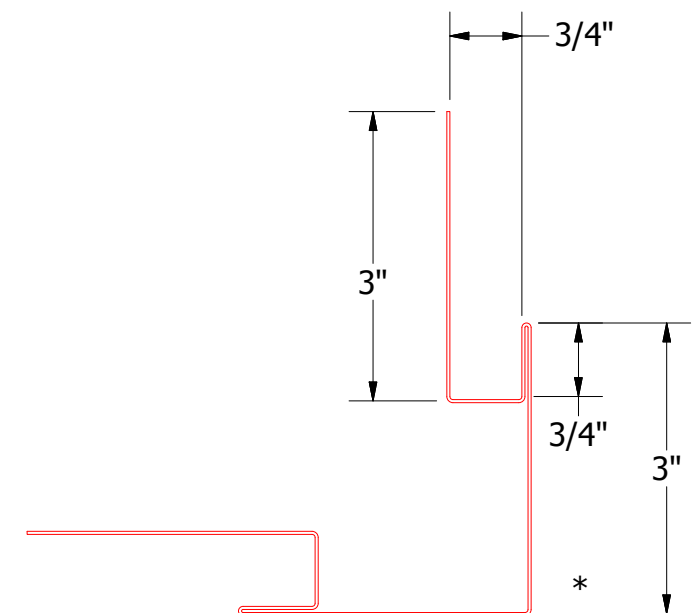
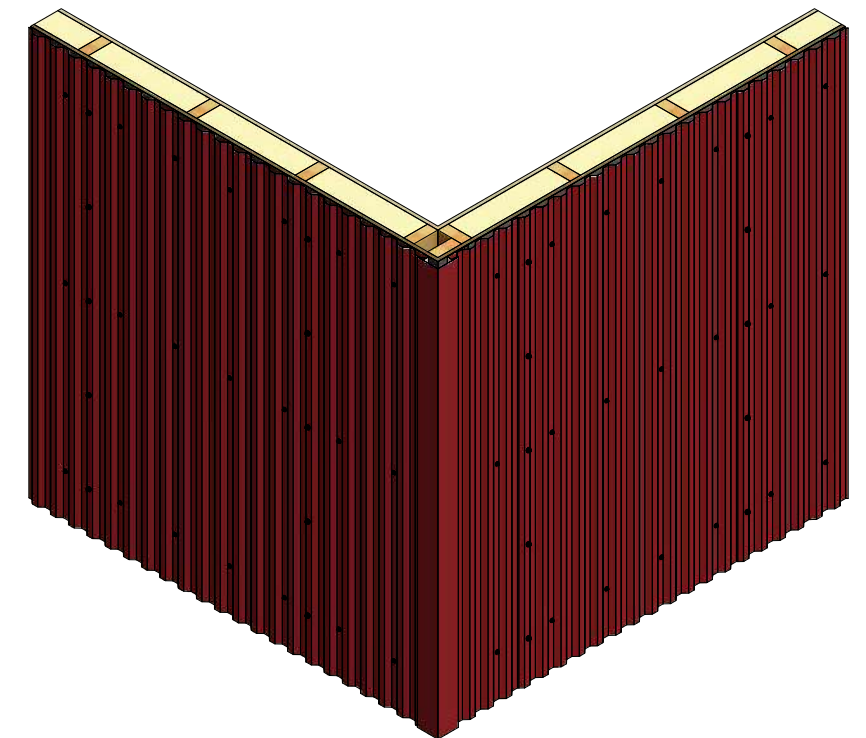
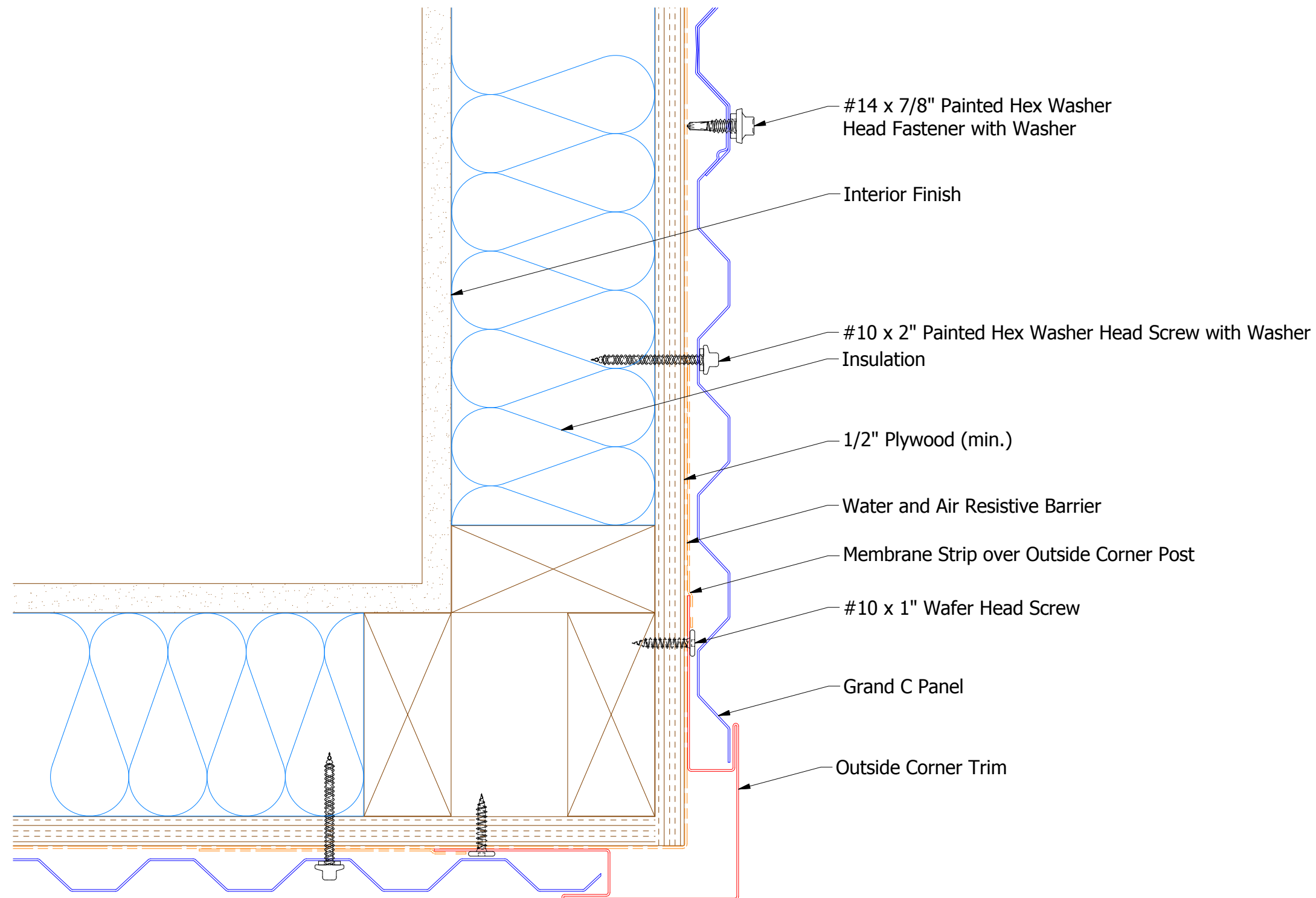
ATAS INTERNATIONAL, INC
Allentown PA
610-395-8445
Mesa AZ
480-558-7210

Vertical Panel



BGA601 - Inside Corner Post

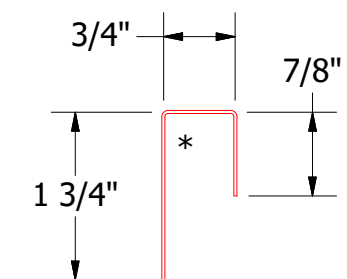
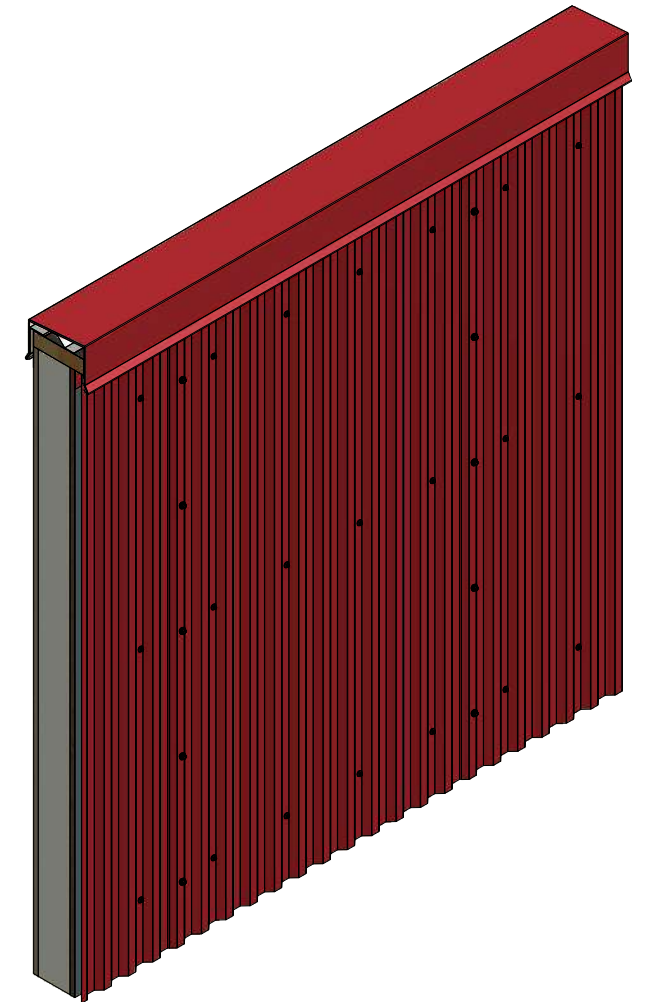
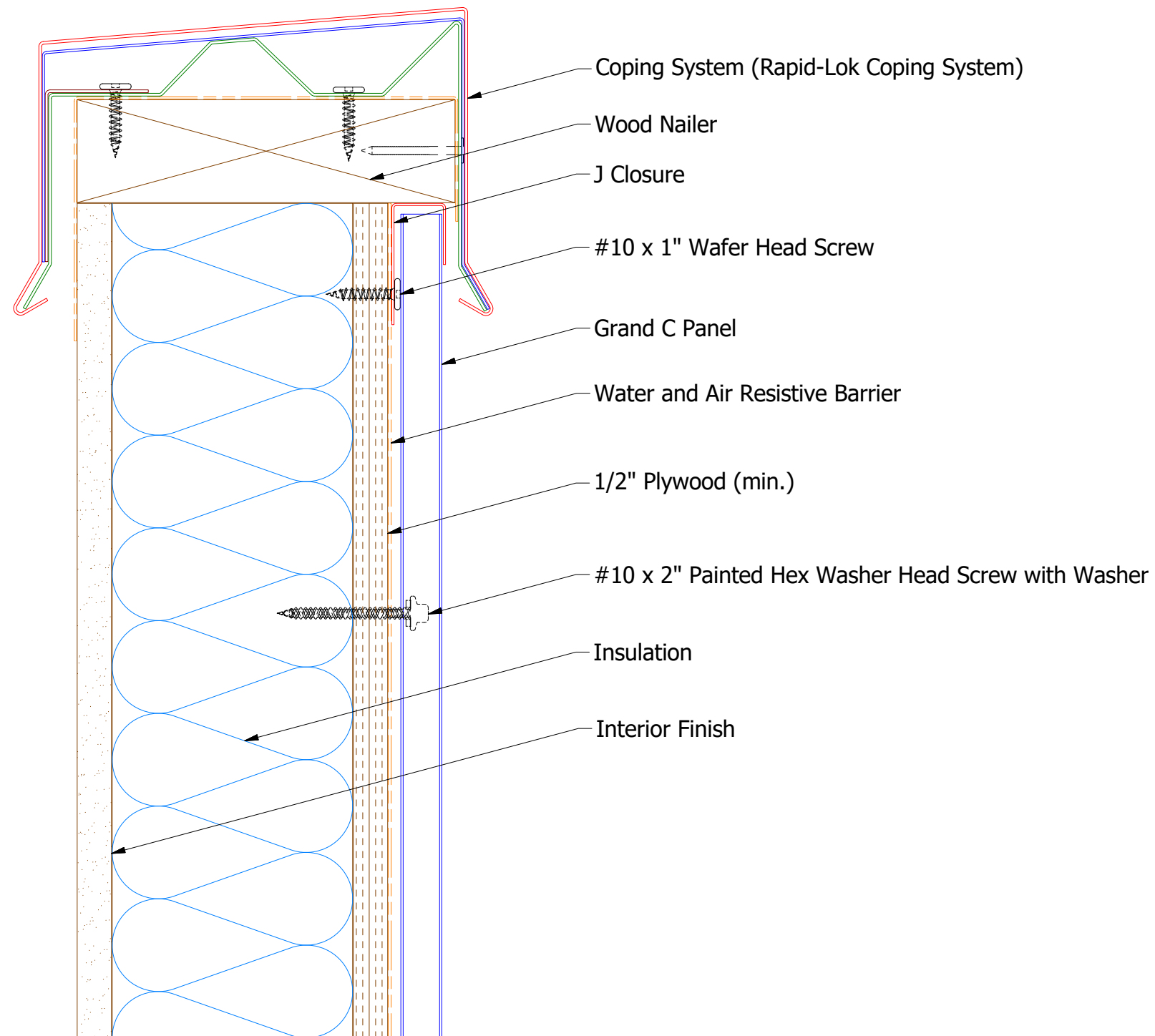
Vertical Panel



BGA602 - Outside Corner Post

					TITLE Grand C Outside Corner Detail			
					DWG. NO.		DR KRK	DATE 2/18/2016
					MATERIAL		APP DAS	DATE 8/8/16
REV. NO.	DATE	DESCRIPTION OF REVISION	BY	APP			SH. SIZE B	SCALE X:X

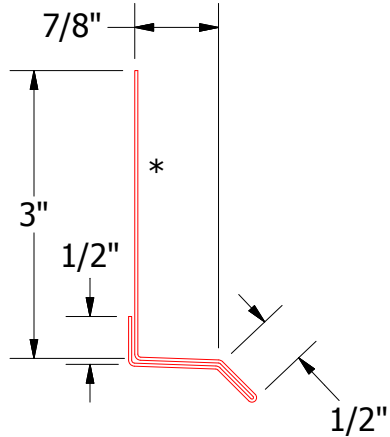
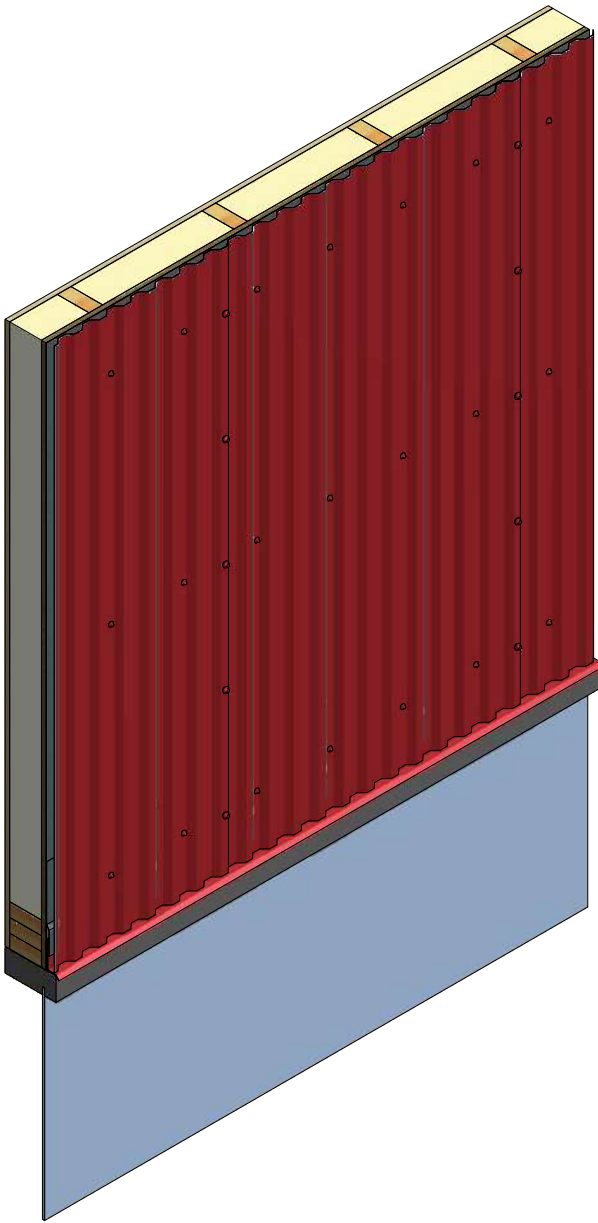
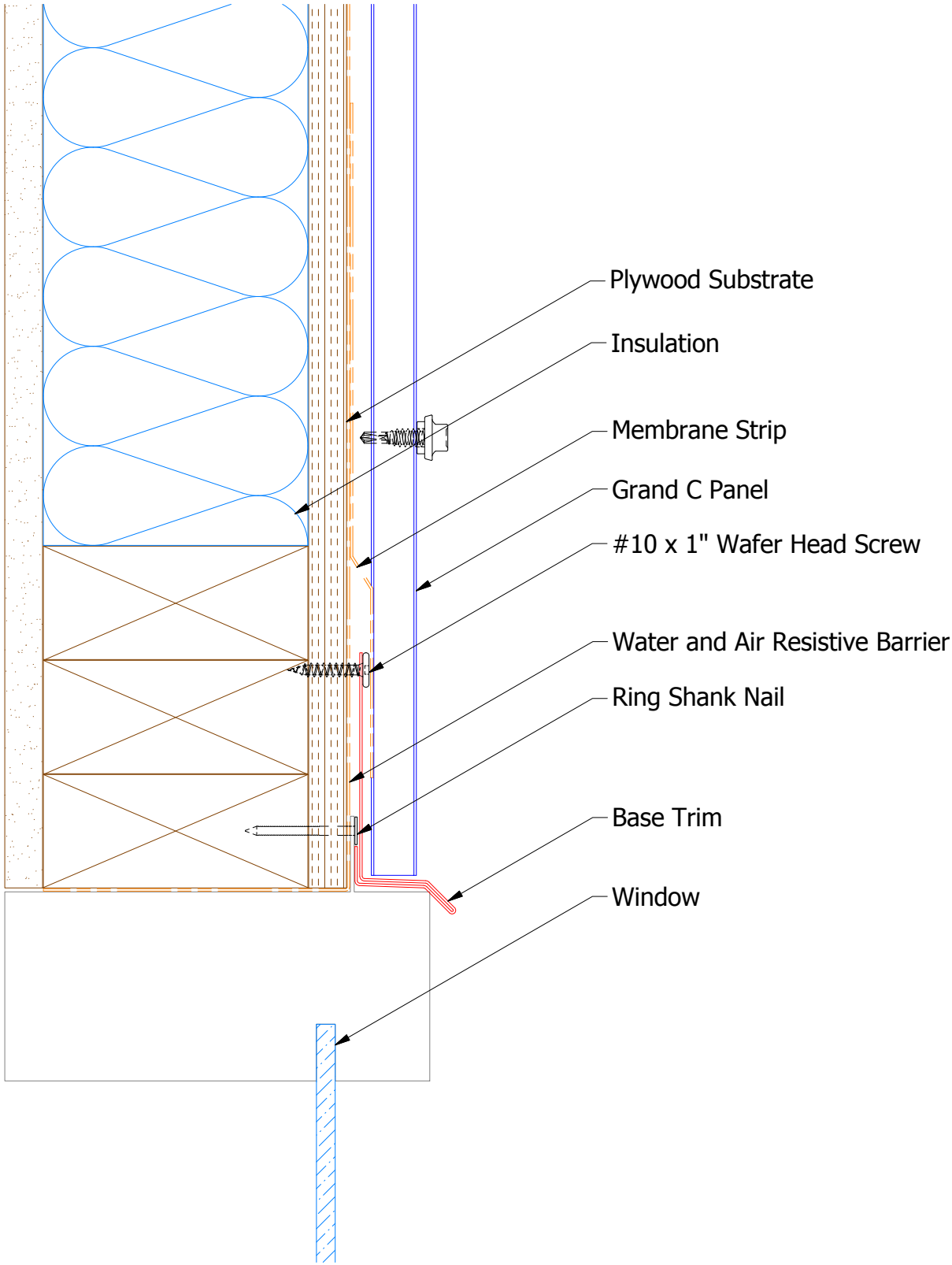
Vertical Panel




BGA270 - J Clousre

					TITLE			
					Grand C Top of Wall Detail			
					DWG. NO.		DR	DATE
							KRK	2/18/2016
					MATERIAL		APP	DATE
							DAS	8/8/16
REV. NO.	DATE	DESCRIPTION OF REVISION	BY	APP			SH. SIZE	SCALE
							B	X:X

Vertical Panel



BGA661 - Base Trim

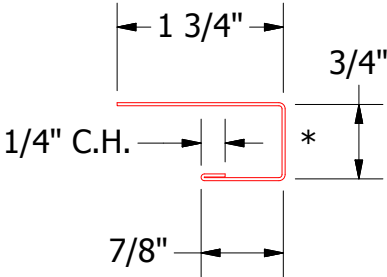
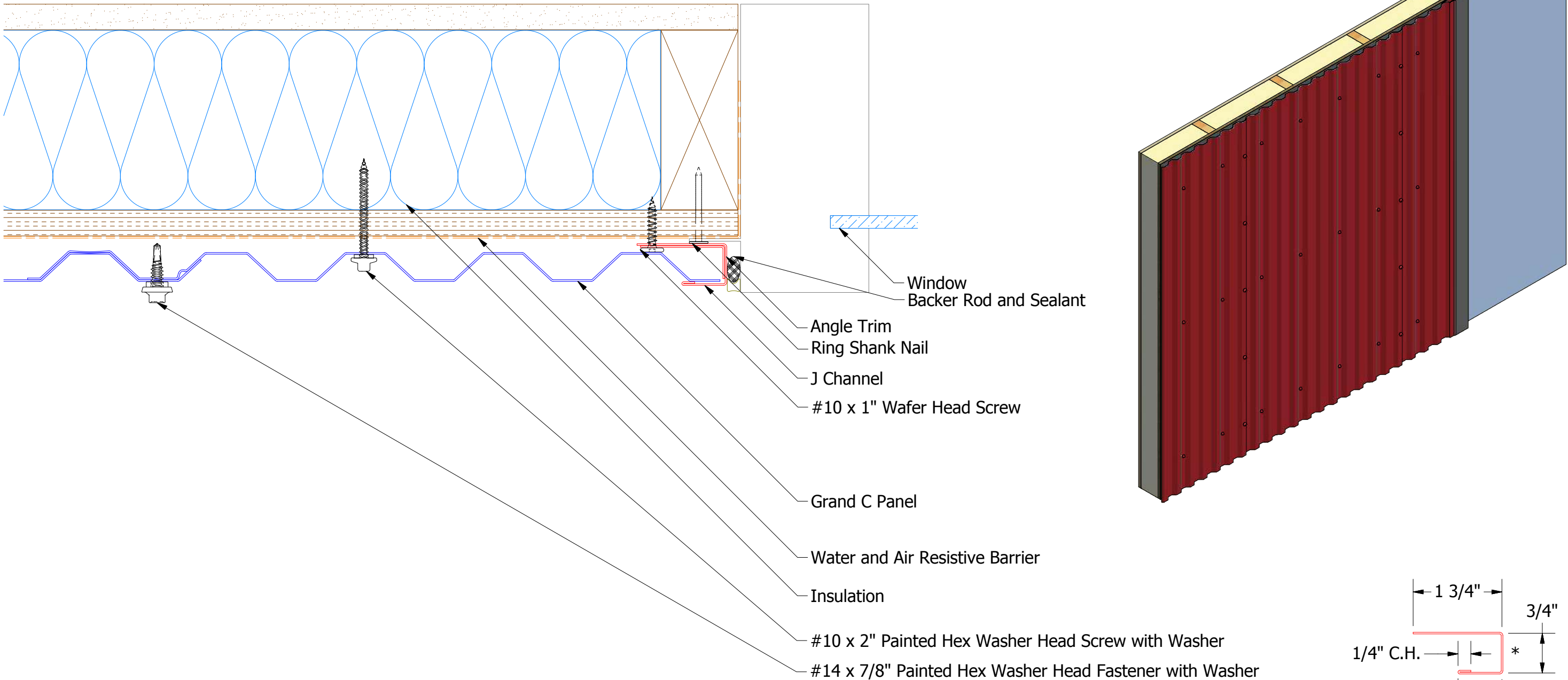


ATAS INTERNATIONAL, INC
Allentown PA
610-395-8445
Mesa AZ
480-558-7210

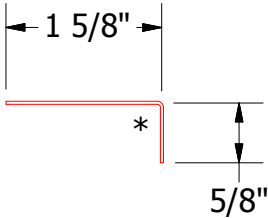
TITLE Grand C Head Window Flange Detail			
DWG. NO.		DR MBP	DATE 7/27/2018
MATERIAL		APP	DATE
REV. NO.	DATE	DESCRIPTION OF REVISION	BY APP
SH. SIZE B		SCALE X:X	

REV. NO.	DATE	DESCRIPTION OF REVISION	BY	APP

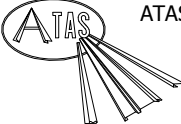
Vertical Panel



BGA034 - J Channel



BGA680 - Angle Trim

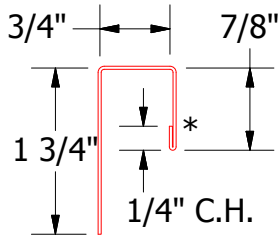
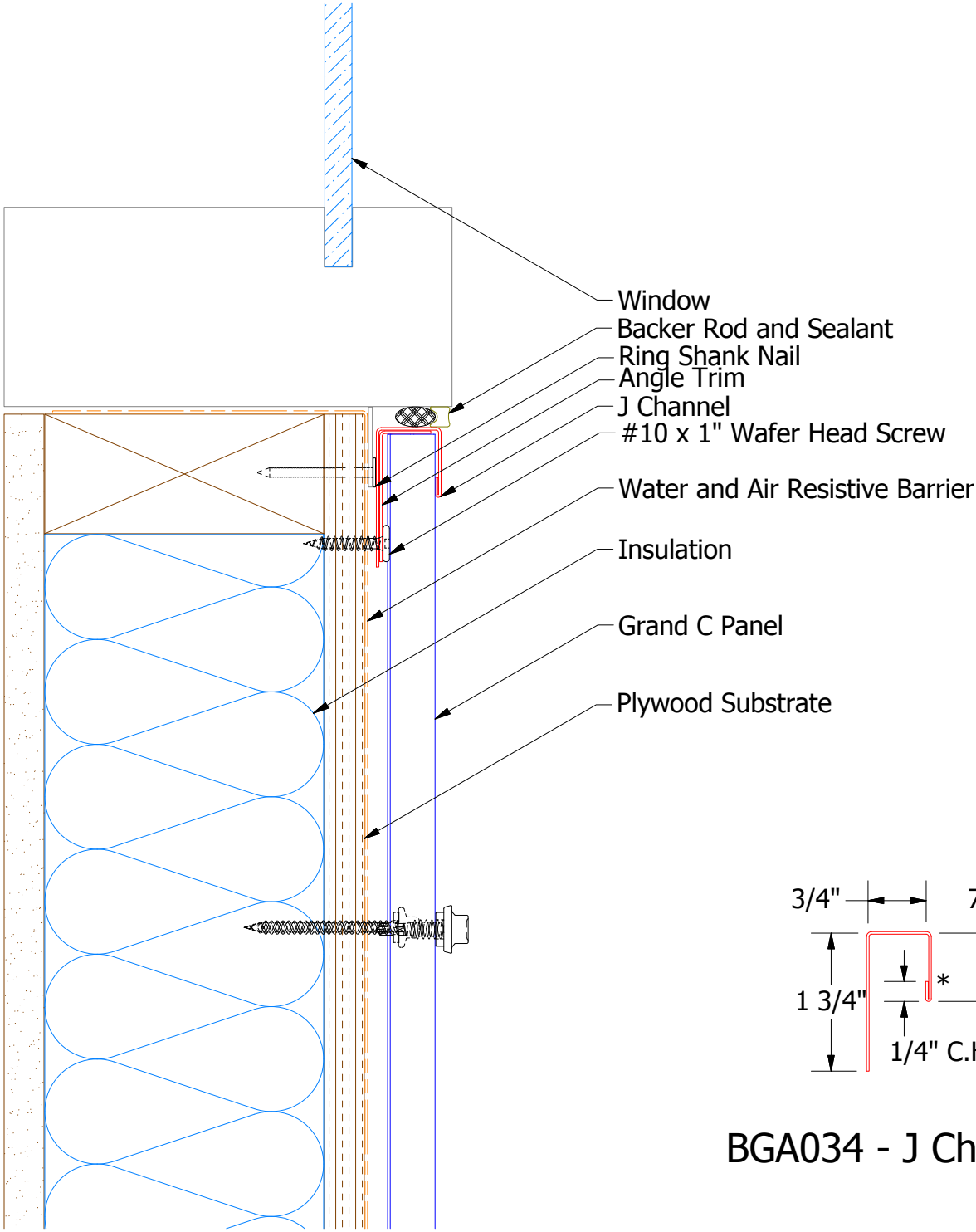


ATAS INTERNATIONAL, INC
Allentown PA
610-395-8445
Mesa AZ
480-558-7210

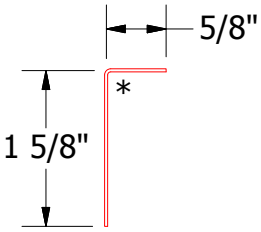
TITLE Grand C Jamb Window Flange Detail			
DWG. NO.		DR MBP	DATE 7/30/2018
MATERIAL		APP	DATE
REV. NO.	DATE	DESCRIPTION OF REVISION	BY APP
SH. SIZE B		SCALE X:X	

REV. NO.	DATE	DESCRIPTION OF REVISION	BY	APP

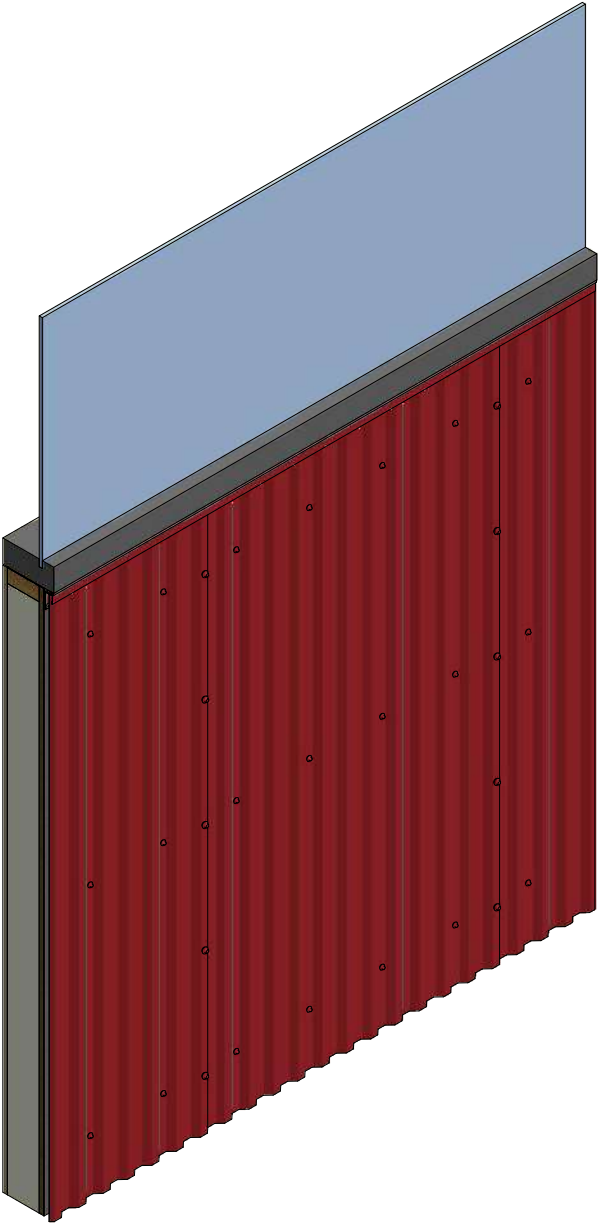
Vertical Panel




BGA034 - J Channel



BGA680 - Angle Trim





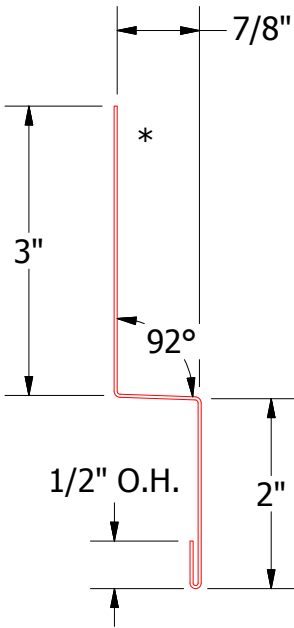
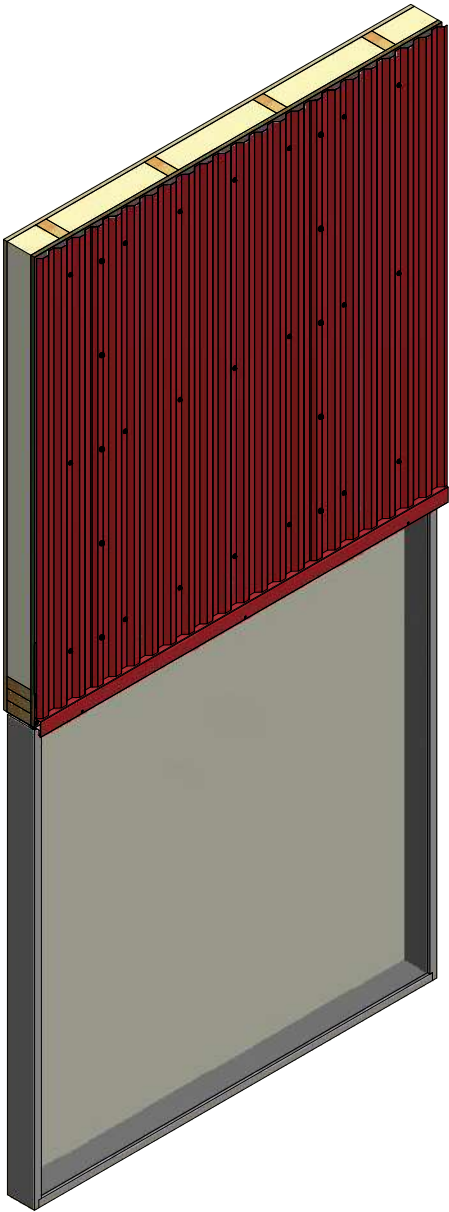
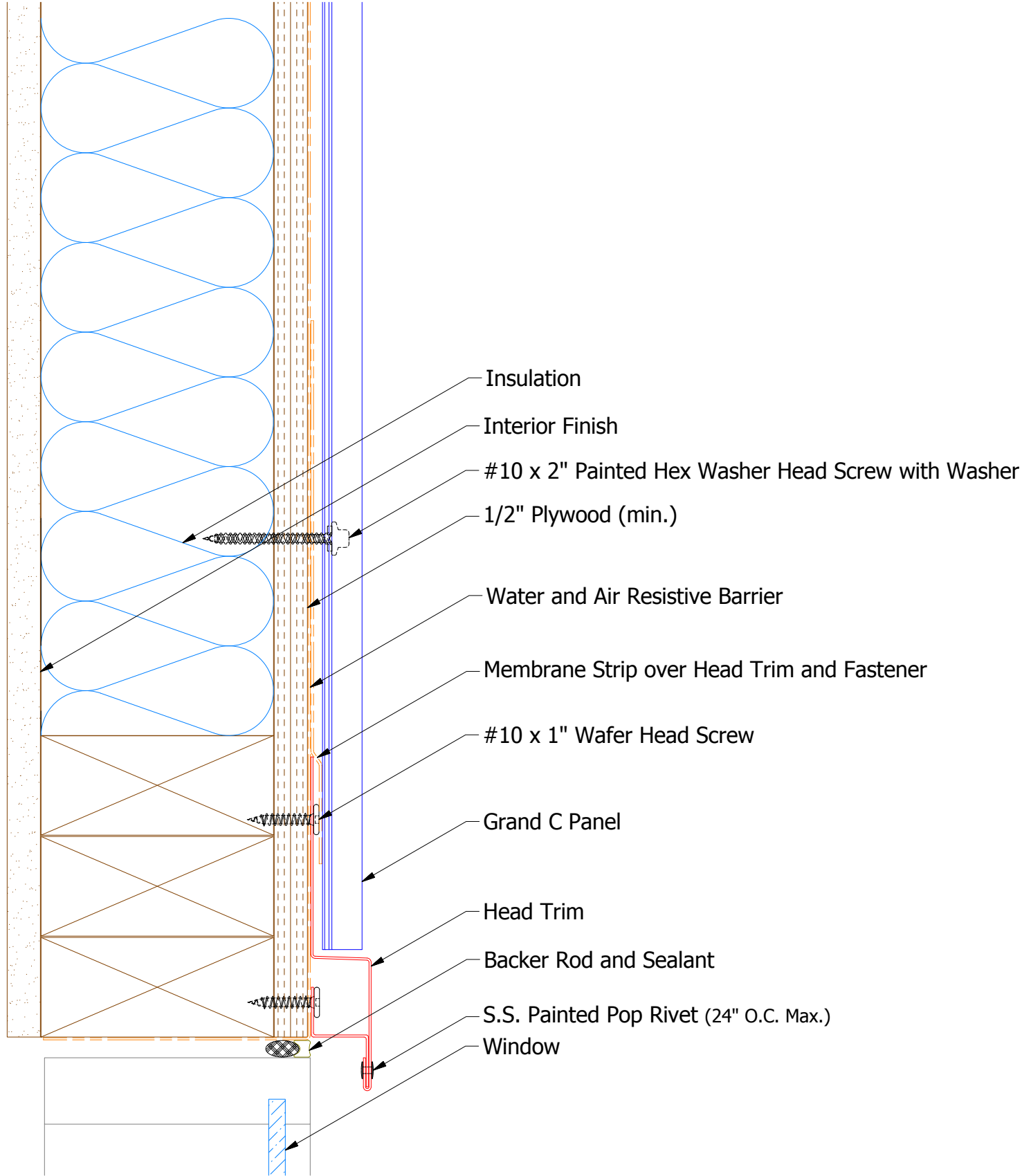
ATAS INTERNATIONAL, INC
Allentown PA
610-395-8445
Mesa AZ
480-558-7210

TITLE
Grand C Window Sill Flange Detail

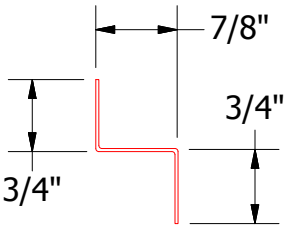
DWG. NO.	DR MBP	DATE 7/30/2018
MATERIAL	APP	DATE
REV. NO.	DATE	DESCRIPTION OF REVISION
SH. SIZE B	SCALE X:X	

REV. NO.	DATE	DESCRIPTION OF REVISION	BY	APP


Vertical Panel



BGA550 - Head Trim



Support Z



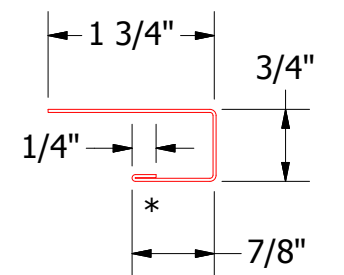
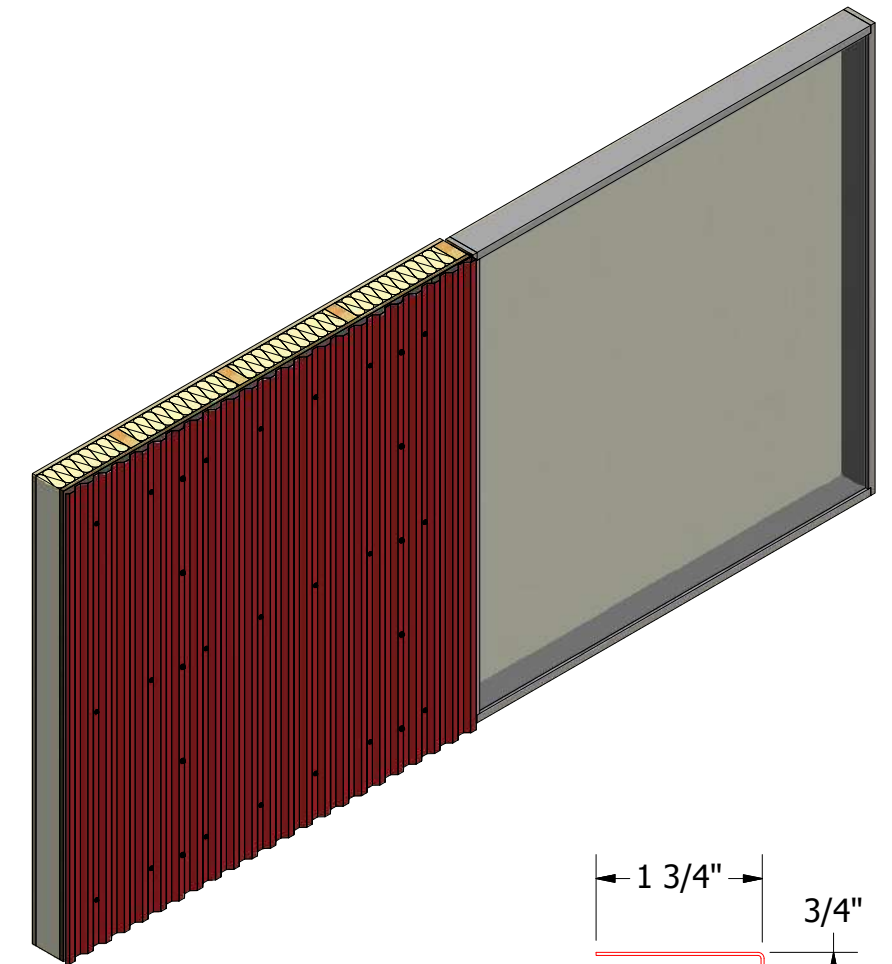
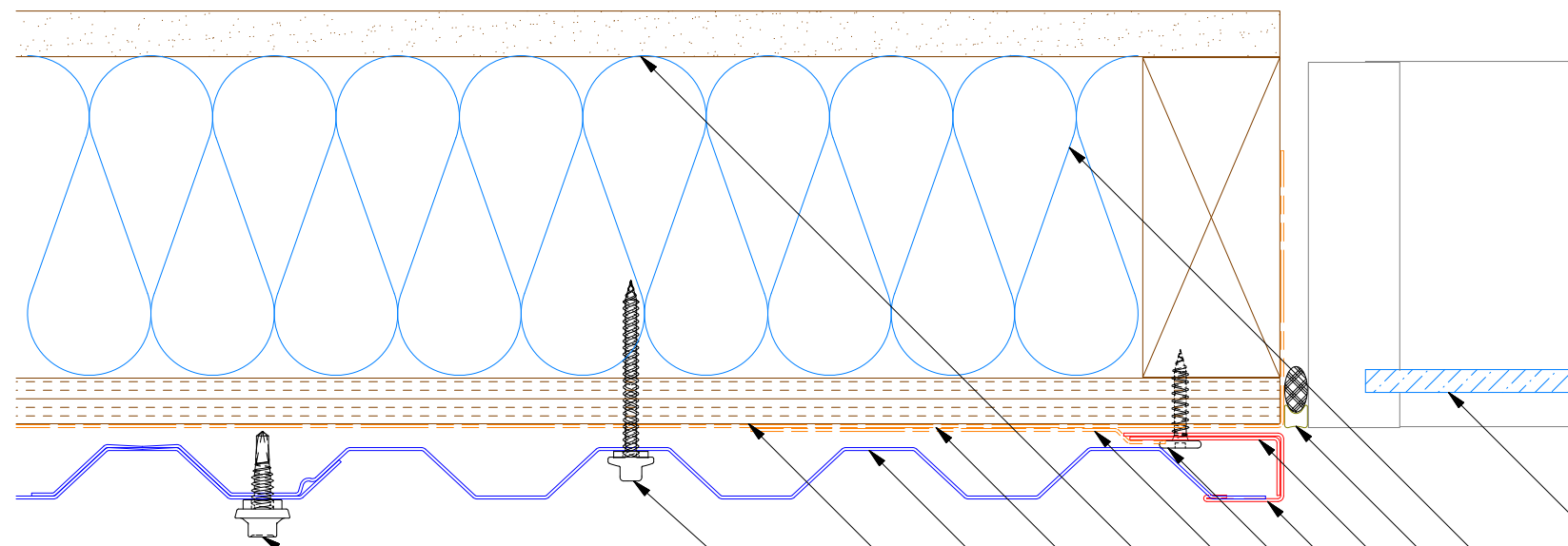
ATAS INTERNATIONAL, INC
Allentown PA
610-395-8445
Mesa AZ
480-558-7210

TITLE
Grand C Head Existing Window Detail

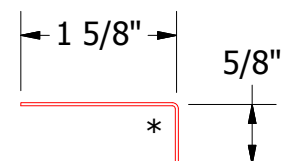
DWG. NO.	DR	DATE
	MBP	7/18/18
MATERIAL	APP	DATE
	SH. SIZE	B
	SCALE	X:X

REV. NO.	DATE	DESCRIPTION OF REVISION	BY	APP

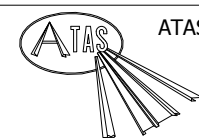
Vertical Panel



BGA034 - J Channel



BGA680 - Angle Trim

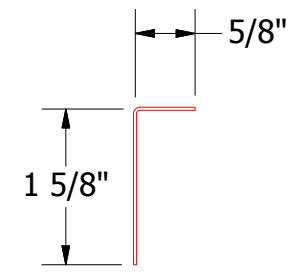
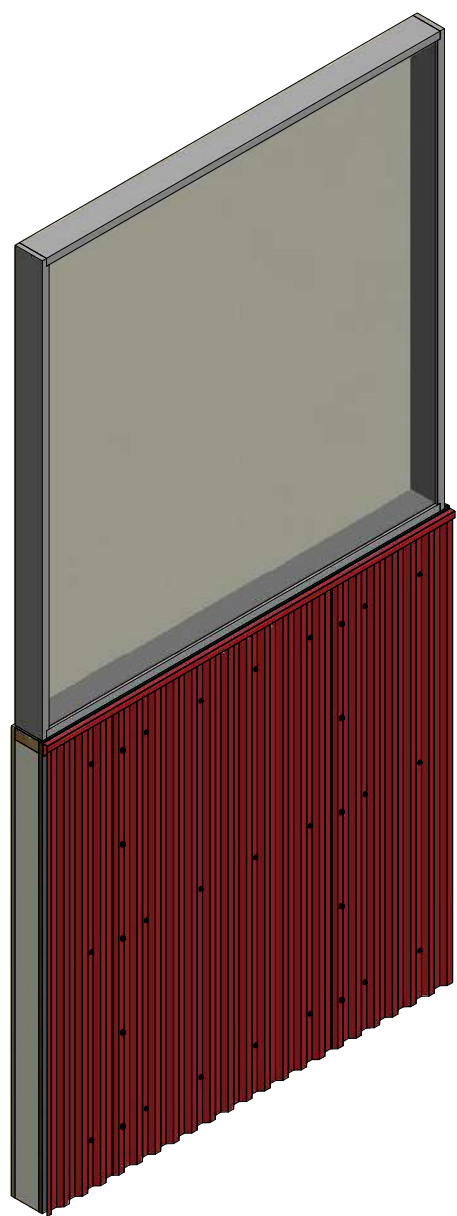
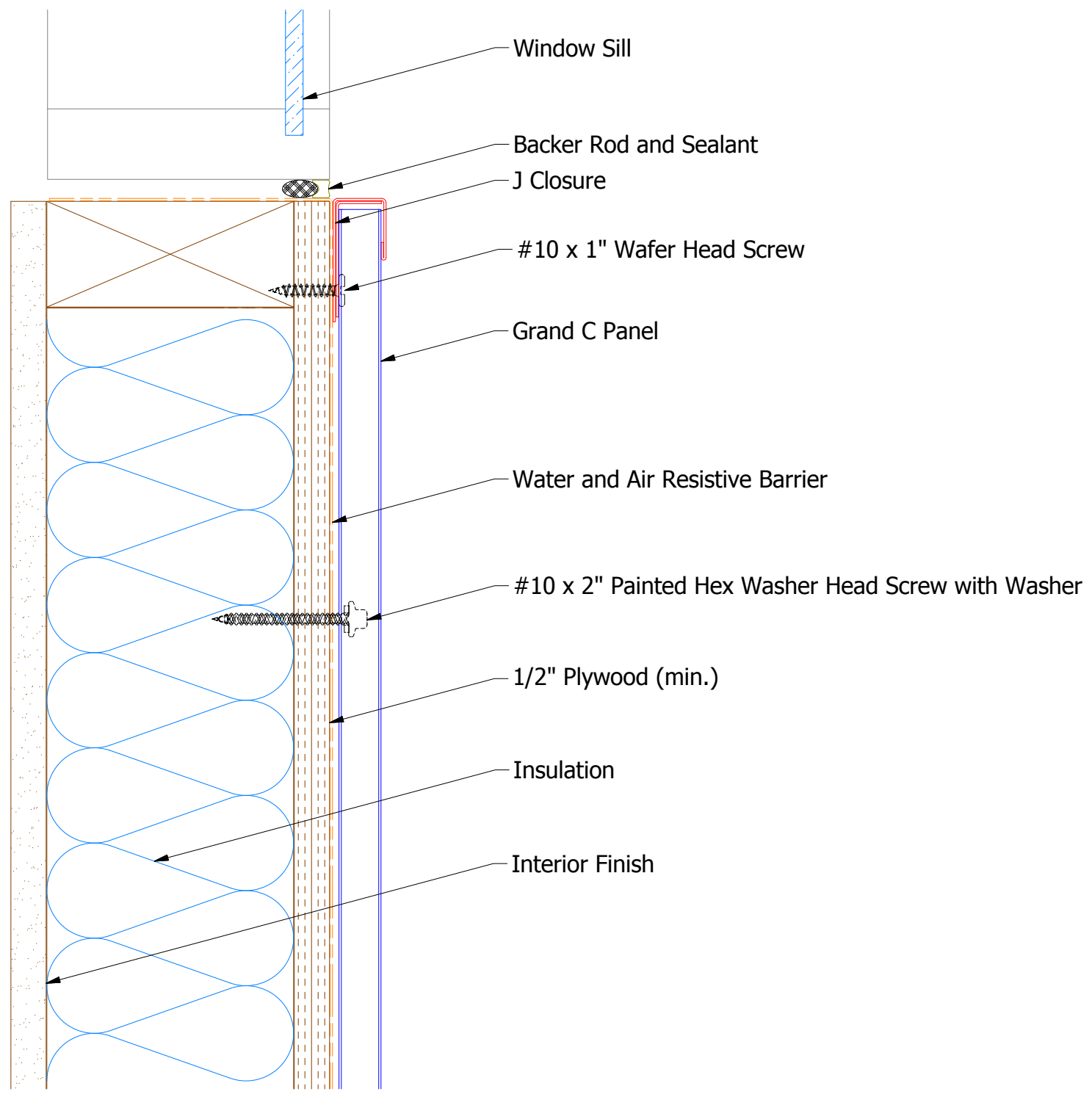


ATAS INTERNATIONAL, INC
Allentown PA
610-395-8445
Mesa AZ
480-558-7210

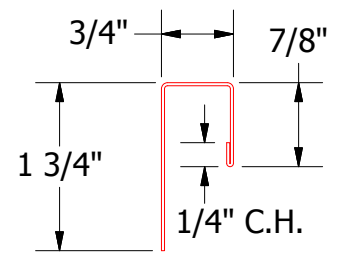
TITLE	Grand C Jamb Existing Window Detail
-------	-------------------------------------

					Grand C Jamb Existing Window Detail			
					DWG. NO.		DR MBP	DATE 7/18/18
					MATERIAL		APP	DATE
REV. NO.	DATE	DESCRIPTION OF REVISION		BY	APP	SH. SIZE B		SCALE X:X

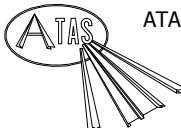
Vertical Panel



BGA280 - Angle Trim



BGA034 - J Channel

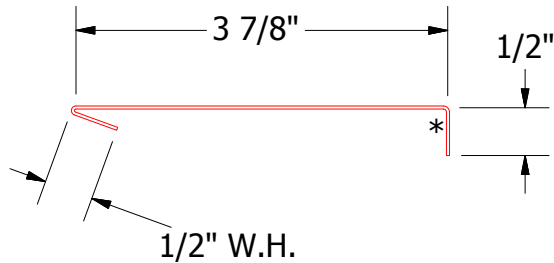
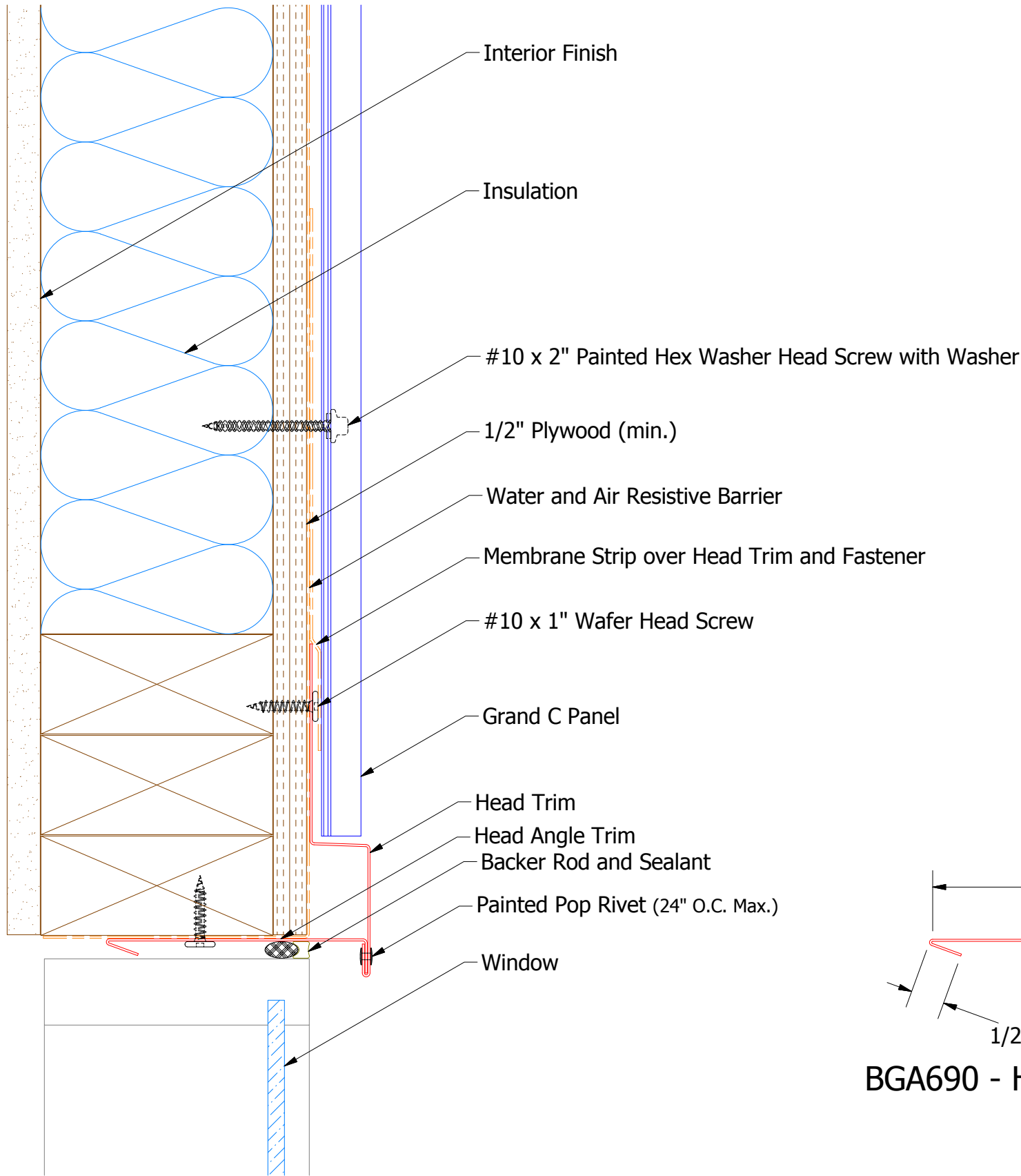


ATAS INTERNATIONAL, INC
Allentown PA
610-395-8445
Mesa AZ
480-558-7210

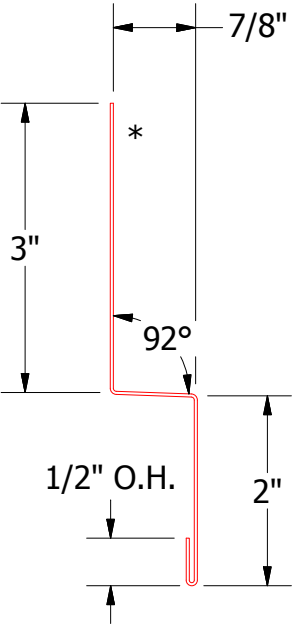
TITLE Grand C Window Sill Existing Window Detail			
DWG. NO.		DR MBP	DATE 7/18/18
APP		DATE	
MATERIAL		SH. SIZE B	SCALE X:X

REV. NO.	DATE	DESCRIPTION OF REVISION	BY	APP

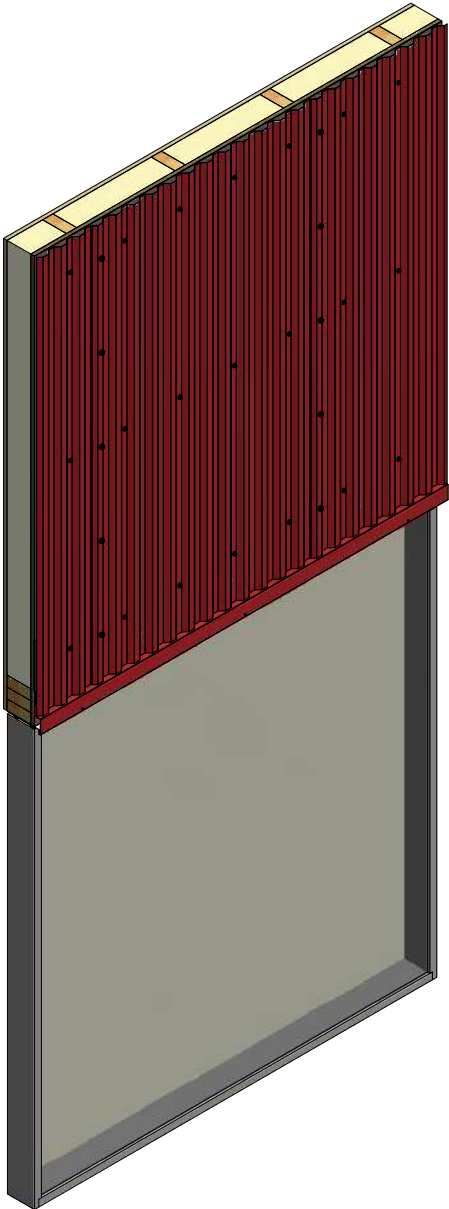
Vertical Panel



BGA690 - Head Angle Trim



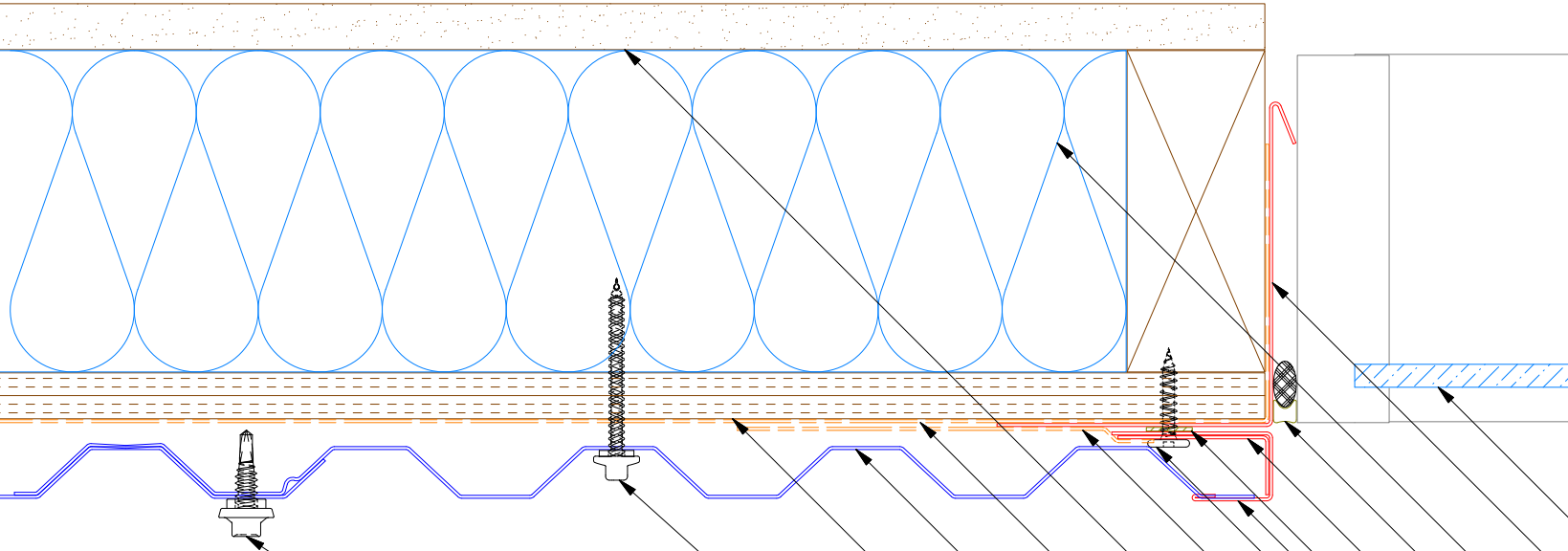
BGA550 - Head Trim



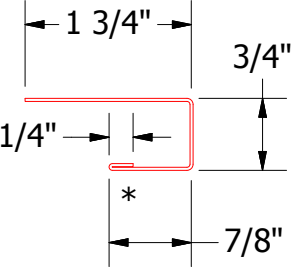
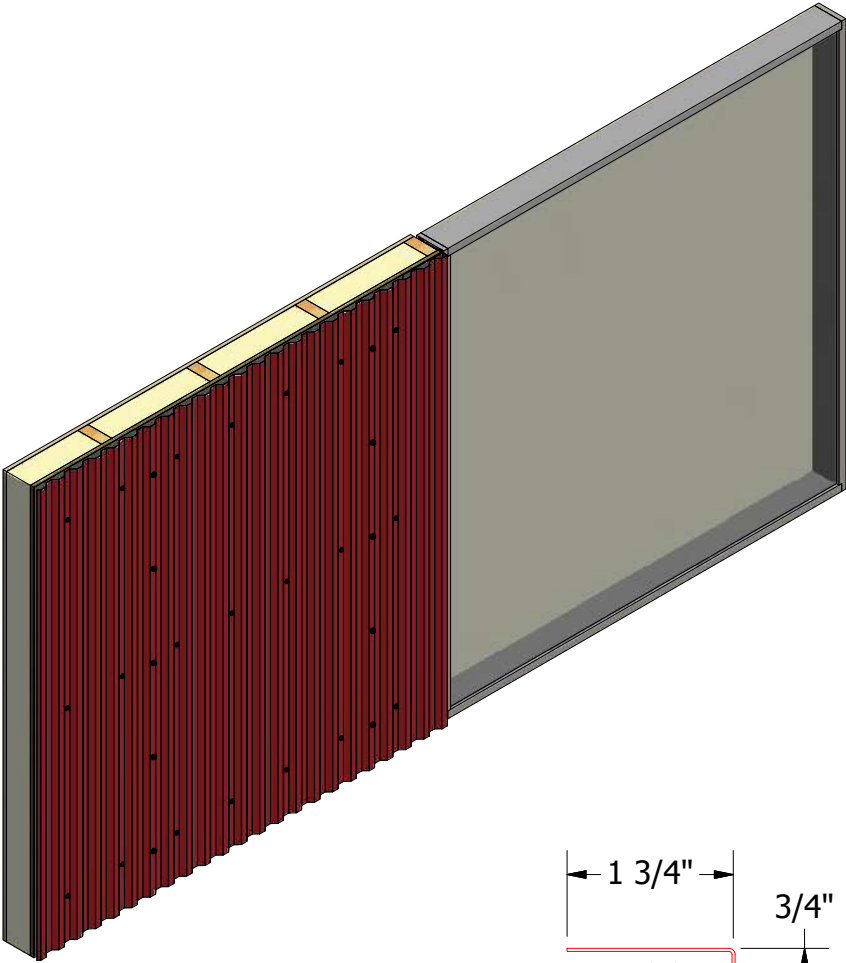
<div>ATAS</div> <div>ATAS INTERNATIONAL, INC</div> <div>Allentown PA</div> <div>610-395-8445</div> <div>Mesa AZ</div> <div>480-558-7210</div>			
TITLE			
Grand C Head Detail			
DWG. NO.		DR	DATE
		KRK	2/17/2016
		APP	DATE
		DAS	8/8/16
MATERIAL		SH. SIZE	SCALE
		B	X:X

REV. NO.	DATE	DESCRIPTION OF REVISION	BY	APP

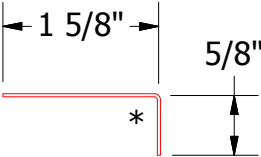
Vertical Panel



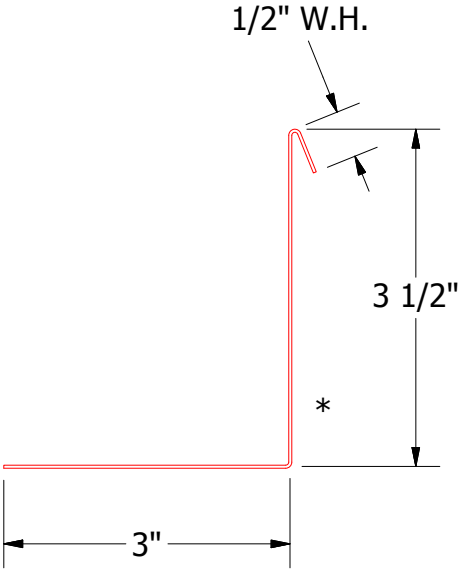
- Window
- Angle Trim with Return
- Insulation
- Backer Rod and Sealant
- Angle Trim
- Butyl Tape
- J Channel
- #10 x 1" Wafer Head Screw
- Membrane Strip over J Channel and Angle Trim
- Interior Finish
- Water and Air Resistive Barrier
- Grand C Panel
- 1/2" Plywood (min.)
- #10 x 2" Painted Hex Washer Head Screw with Washer
- #14 x 7/8" Painted Hex Washer Head Fastener with Washer



BGA034 - J Channel



BGA680 - Angle Trim



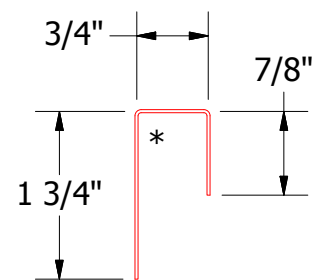
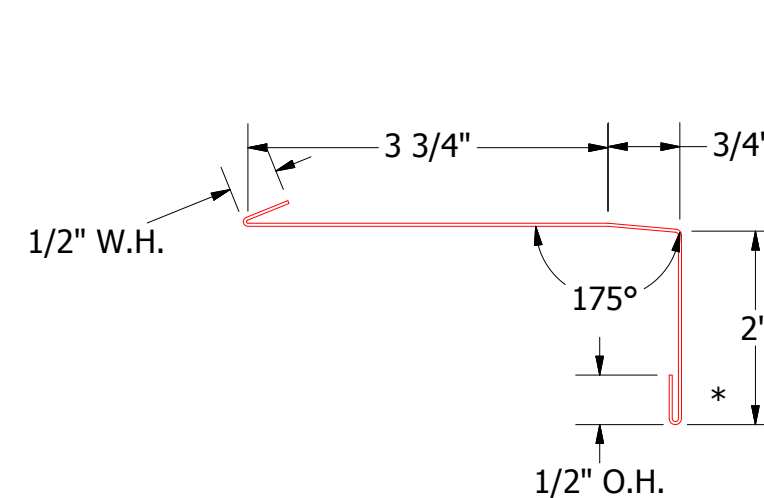
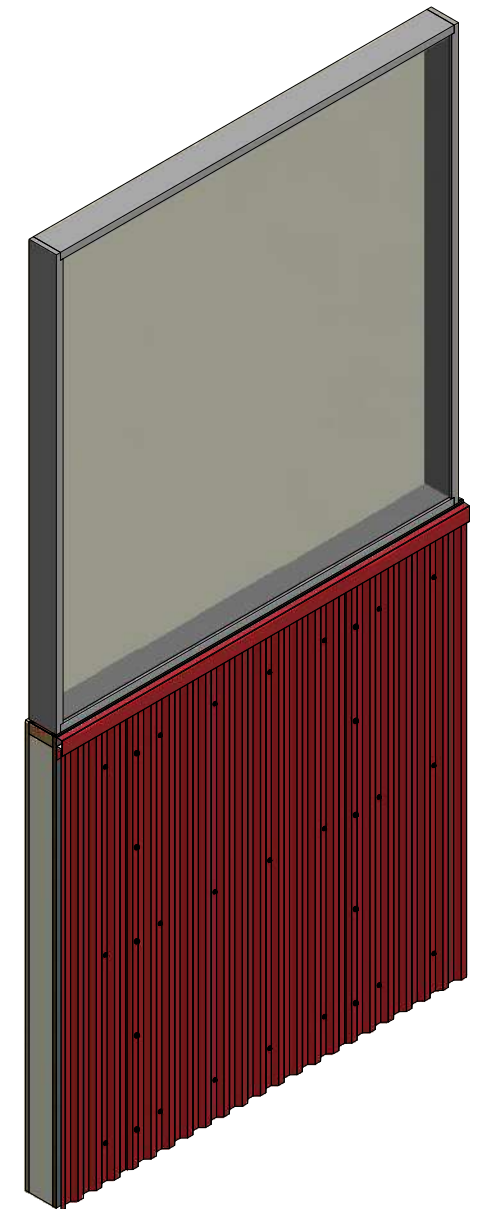
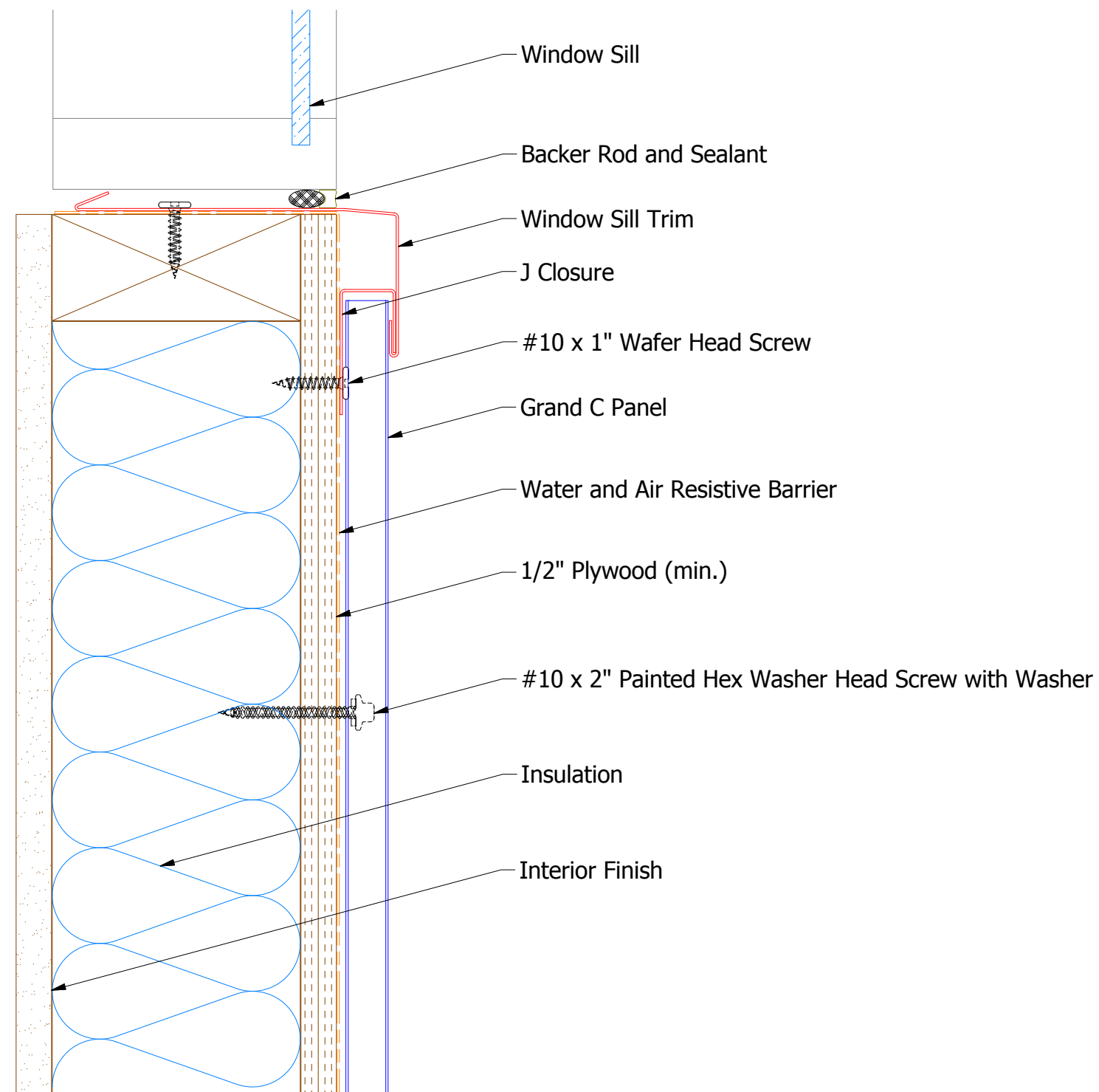
BGA683 - Angle Trim with Return



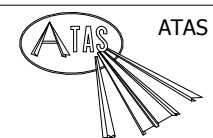
ATAS INTERNATIONAL, INC
Allentown PA
610-395-8445
Mesa AZ
480-558-7210

TITLE			
Grand C Jamb Detail			
DWG. NO.		DR	DATE
		KRK	2/18/2016
MATERIAL		APP	DATE
		DAS	8/8/16
SH. SIZE		B	SCALE
			X:X

Vertical Panel



BGA270 - J Closure



ATAS INTERNATIONAL, INC
Allentown PA
610-395-8445
Mesa AZ
480-558-7210

BGA670 - Window Sill Trim

						TITLE	Grand C Window Sill Detail				
						DWG. NO.		DR	KRK	DATE	2/19/2016
								APP	DAS	DATE	8/8/16
						MATERIAL		SH. SIZE	B	SCALE	X:X
REV. NO.	DATE	DESCRIPTION OF REVISION			BY	APP					