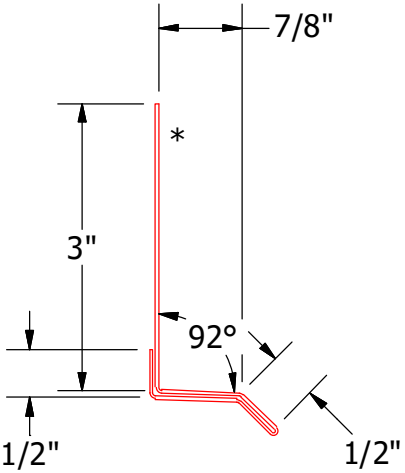
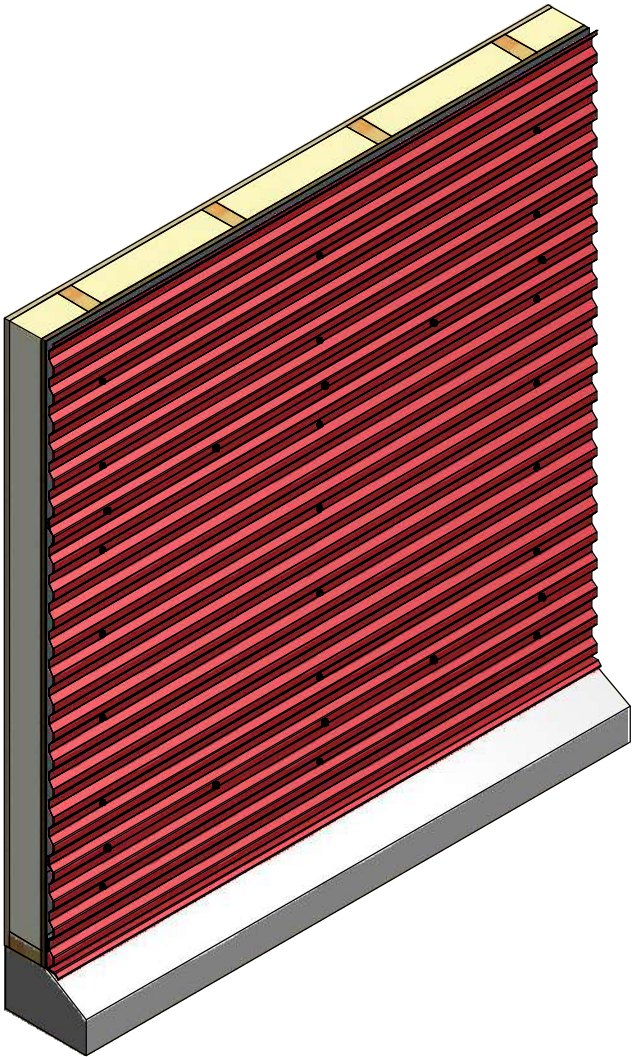
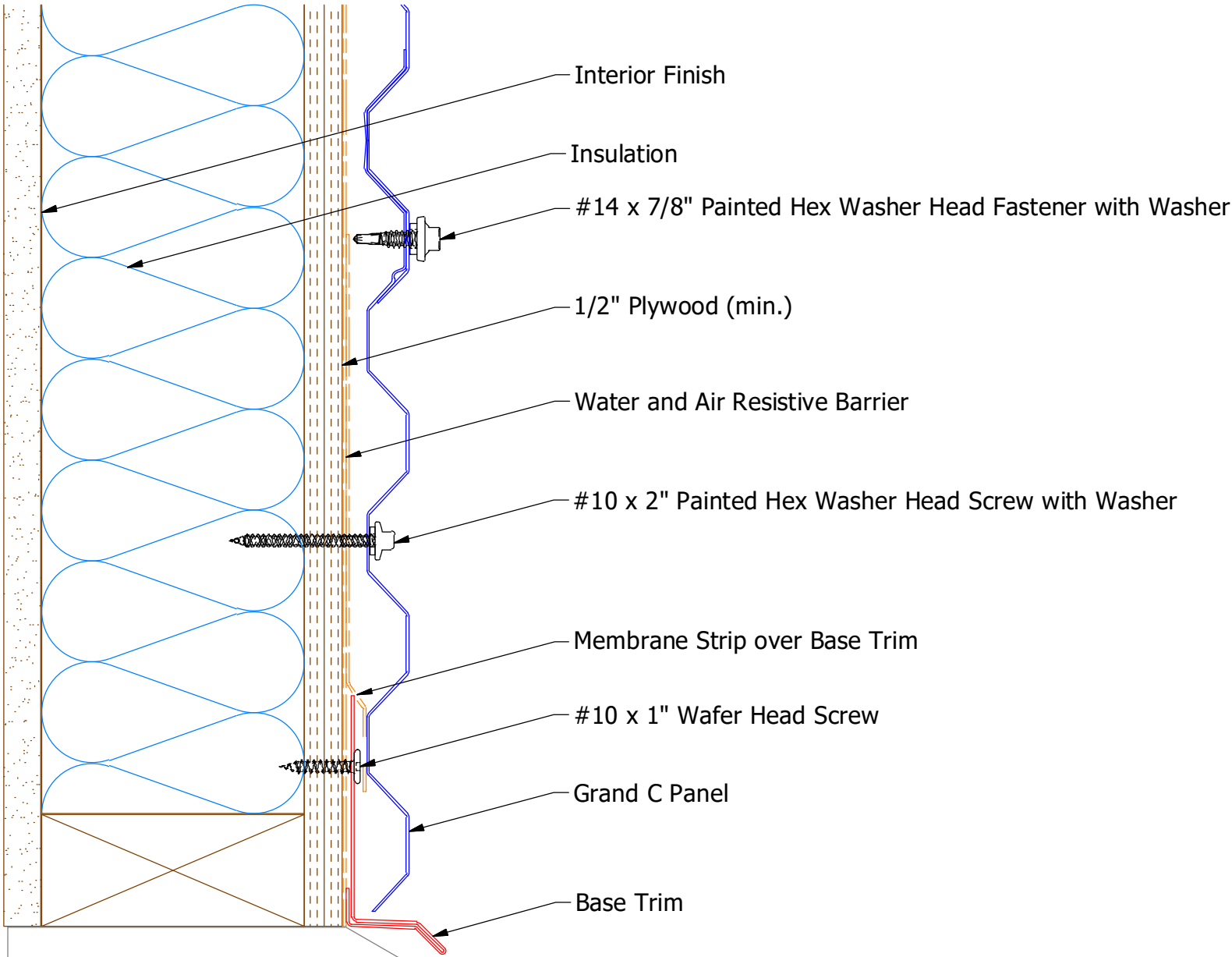


ATAS INTERNATIONAL, INC  
Allentown PA  
610-395-8445  
Mesa AZ  
480-558-7210

TITLE			
Grand C Panel Profile Detail			
DWG. NO.		DR	DATE
		KRK	2/19/2016
		APP	DATE
MATERIAL		SH. SIZE	SCALE
		B	X:X

REV. NO.	DATE	DESCRIPTION OF REVISION	BY	APP

Horizontal Panel

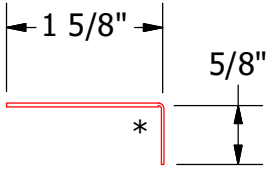
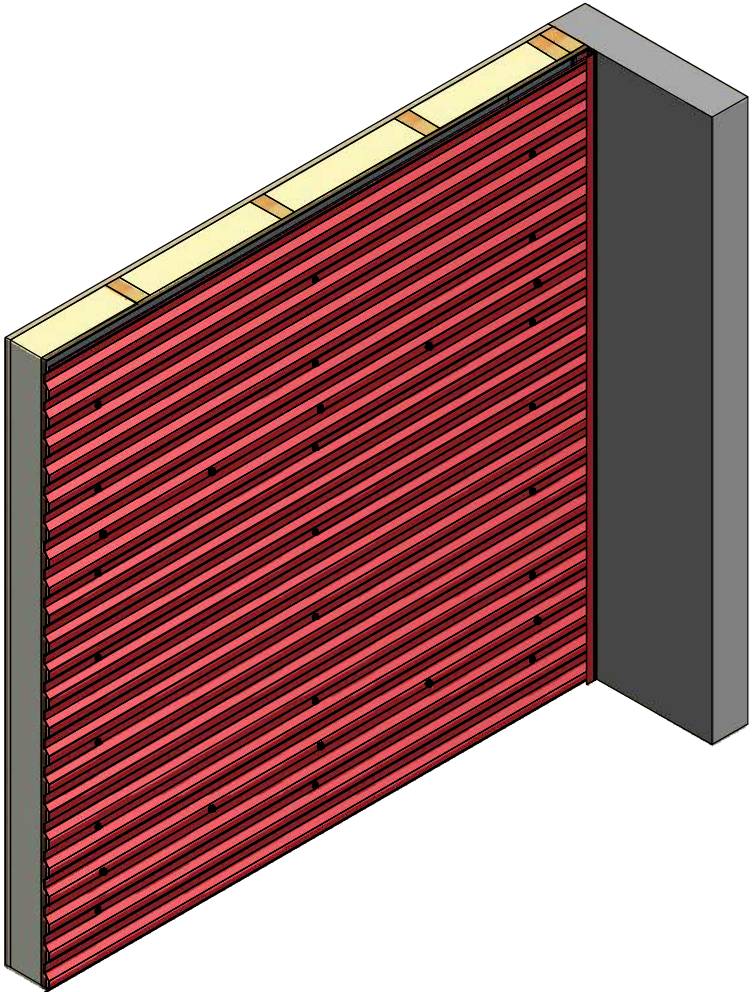
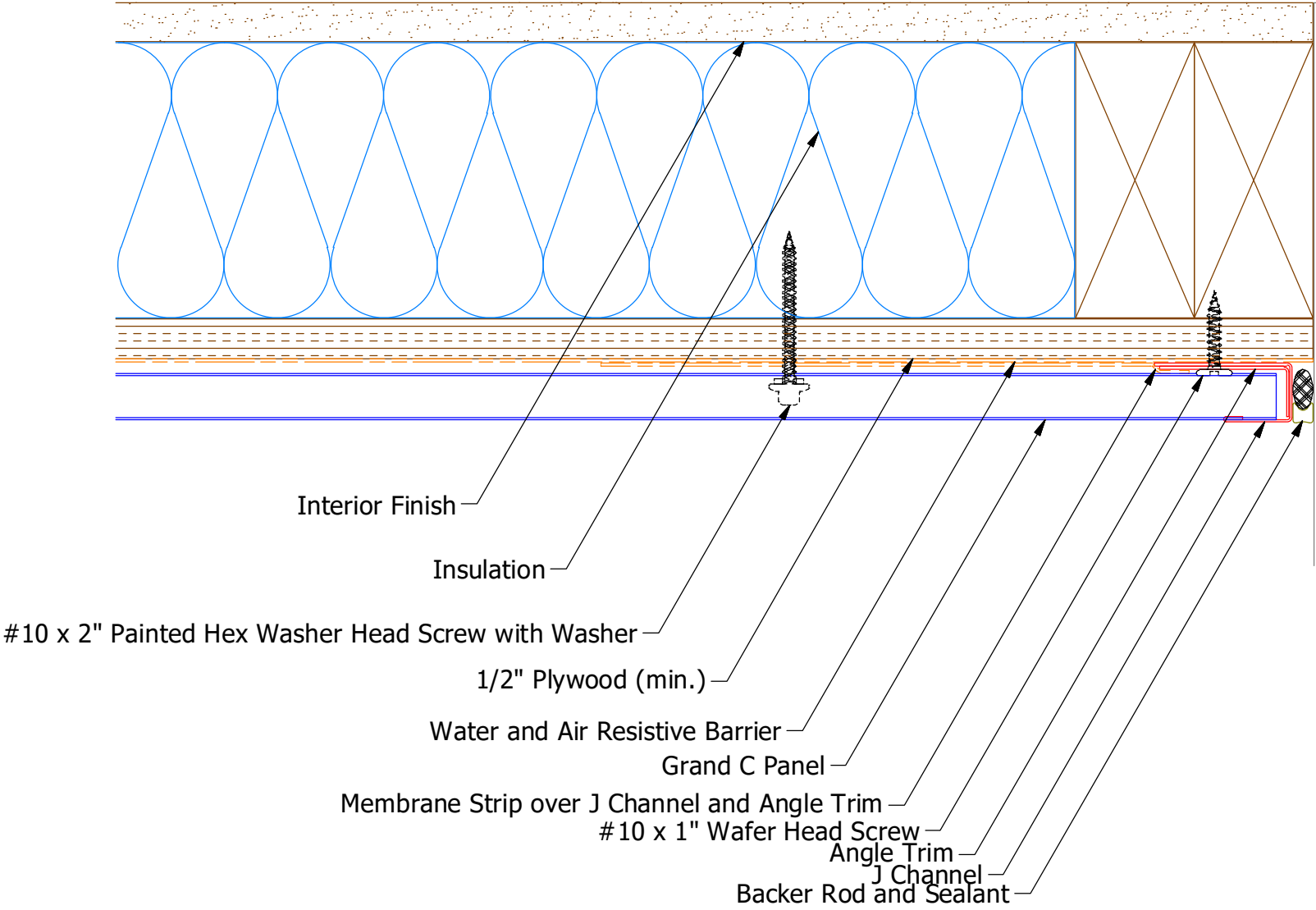


BGA661 - Base Trim

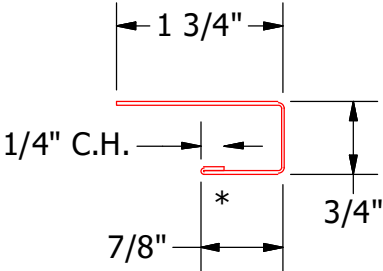
		ATAS INTERNATIONAL, INC Allentown PA 610-395-8445 Mesa AZ 480-558-7210	
TITLE  Grand C Base Detail			
DWG. NO.		DR KRK	DATE 2/17/2016
		APP DAS	DATE 8/8/16
MATERIAL		SH. SIZE B	SCALE X:X

REV. NO.	DATE	DESCRIPTION OF REVISION	BY	APP

Horizontal Panel

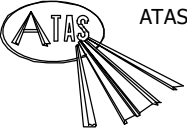


BGA680 - Angle Trim



BGA034 - J Channel

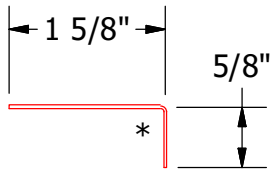
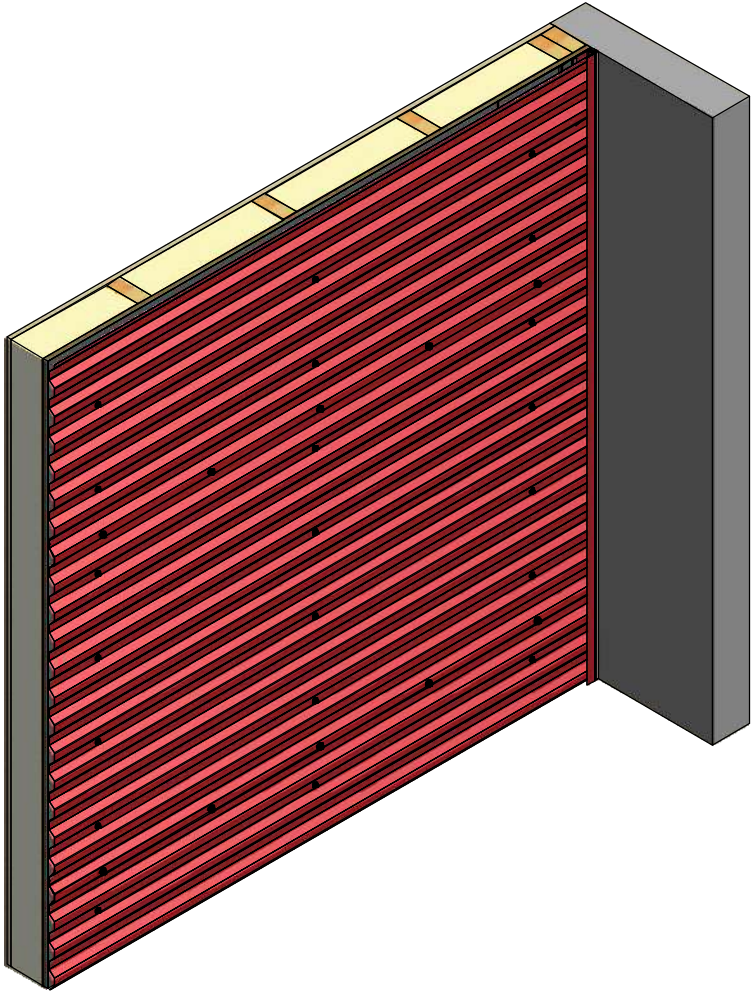
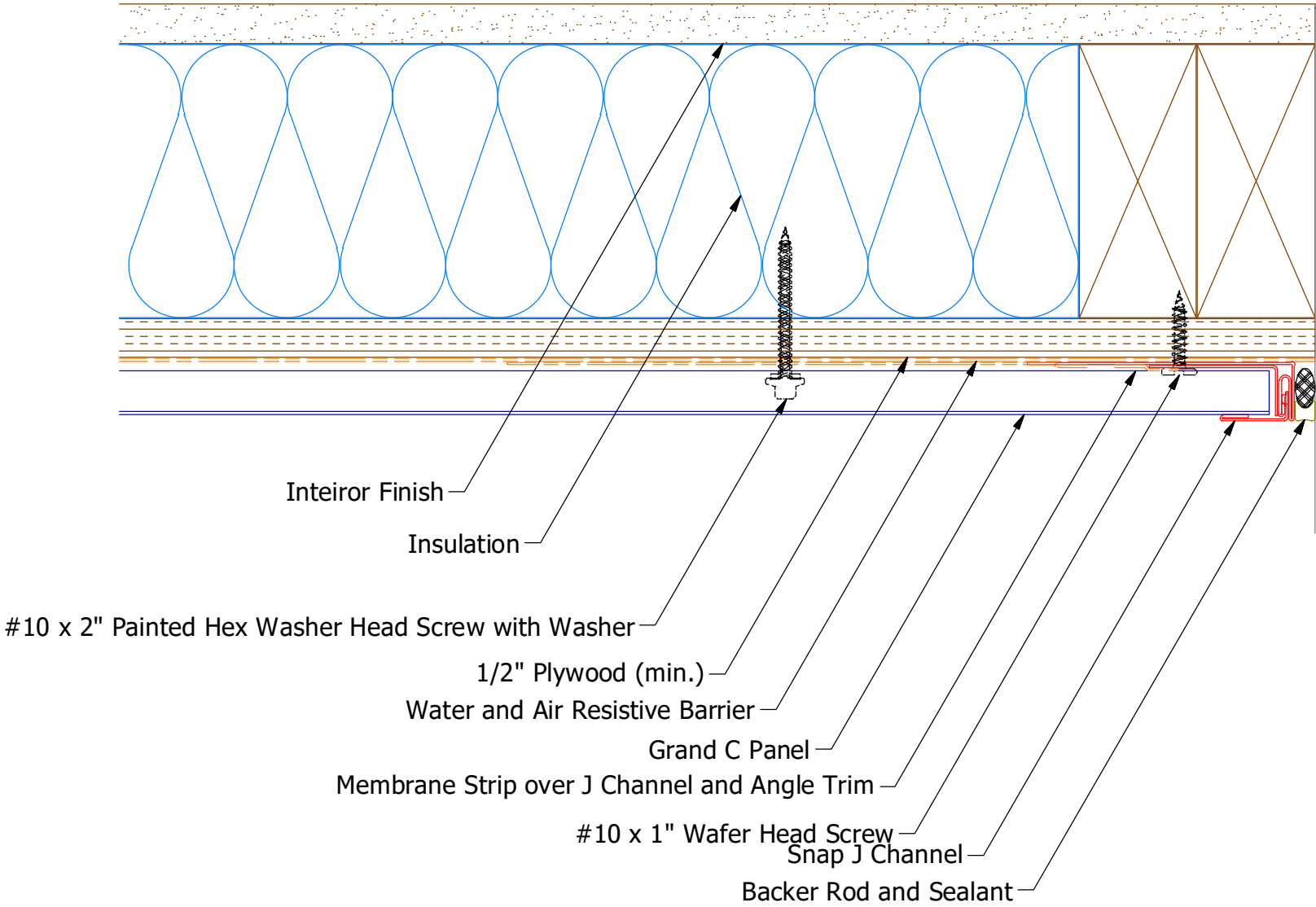
				TITLE			
				Grand C Endwall Detail			
				DWG. NO.		DR	DATE
						KRK	2/17/2016
						APP	DATE
						DAS	8/8/16
				MATERIAL		SH. SIZE	SCALE
						B	X:X
REV. NO.	DATE	DESCRIPTION OF REVISION		BY	APP		



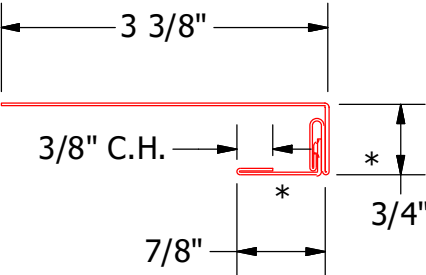
ATAS INTERNATIONAL, INC  
Allentown PA  
610-395-8445  
Mesa AZ  
480-558-7210



Horizontal Panel - Alternate Detail



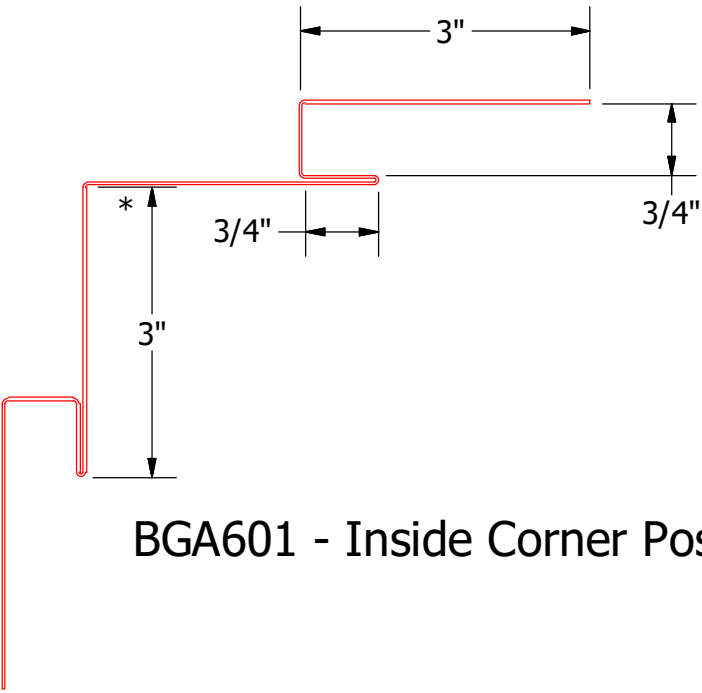
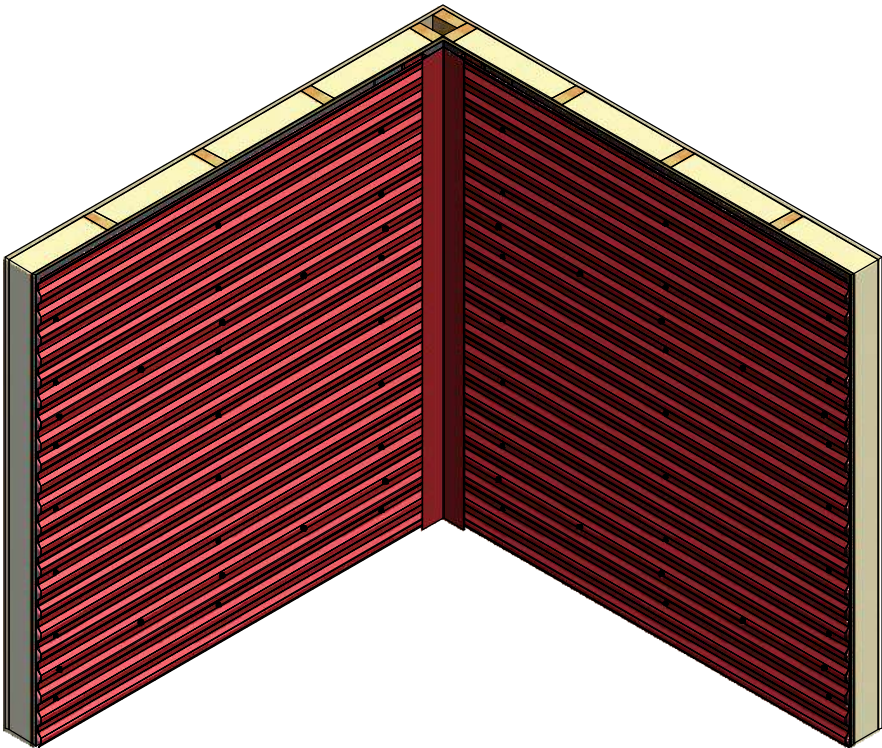
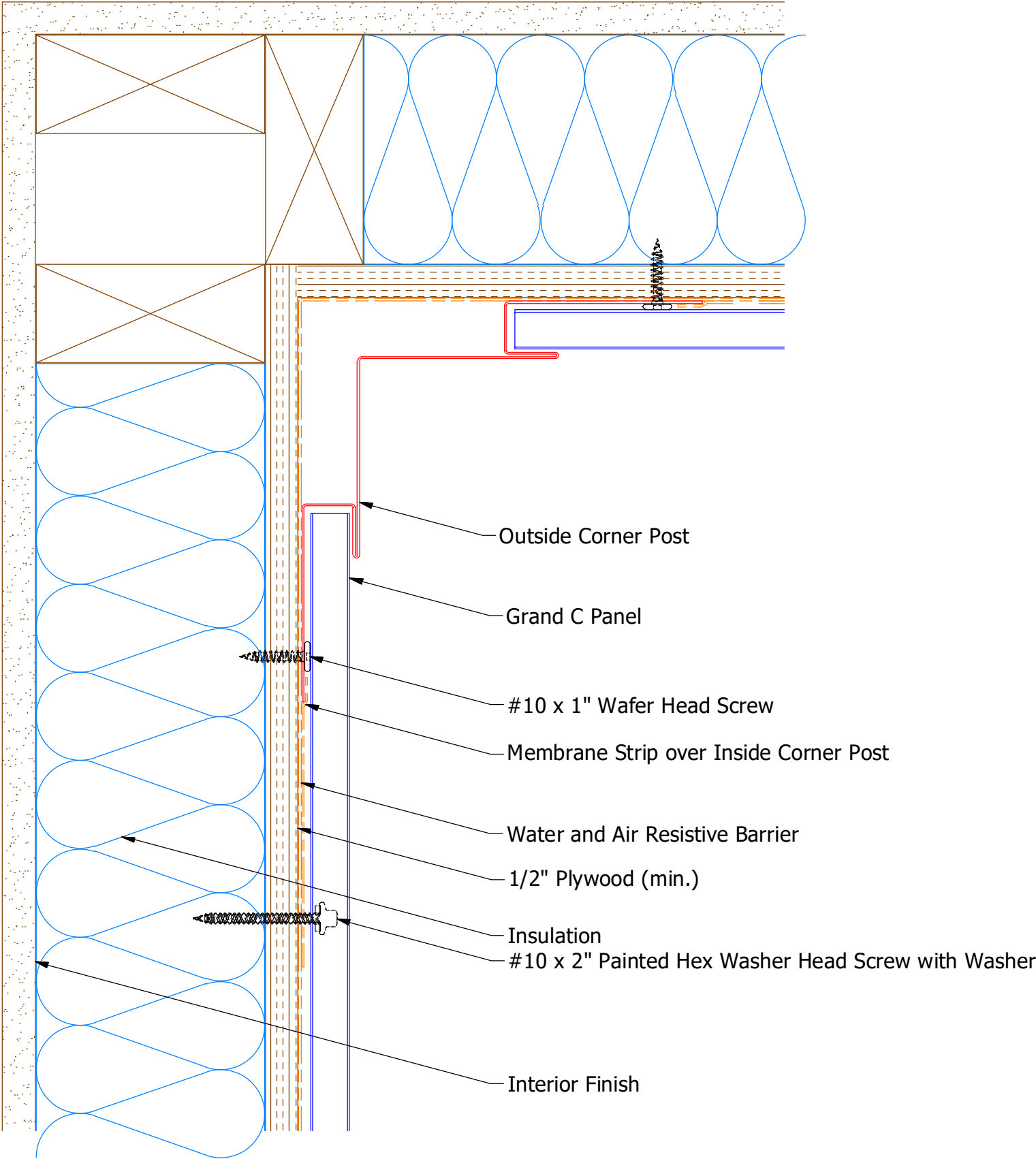
BGA680 - Angle Trim



BGA309 - Snap J Channel

						Grand C Endwall Detail			
						DWG. NO.		DR KRK	DATE 2/17/2016
						MATERIAL		APP DAS	DATE 8/8/16
REV. NO.	DATE	DESCRIPTION OF REVISION			BY	APP	SH. SIZE B	SCALE X:X	

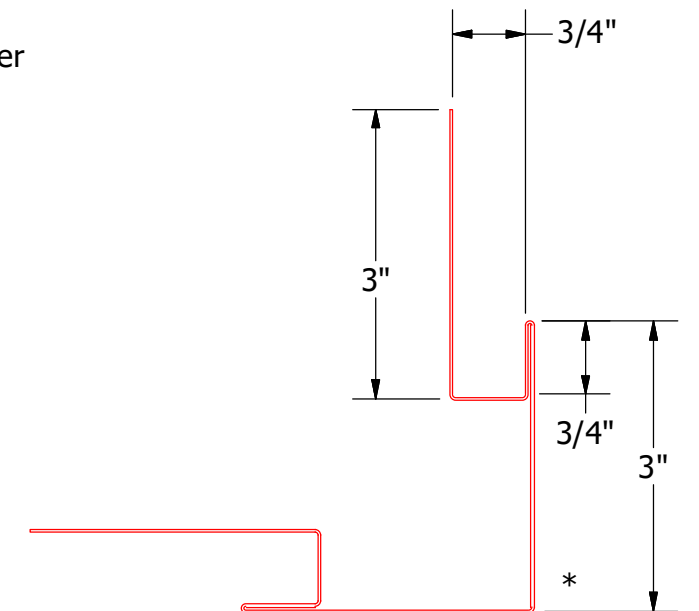
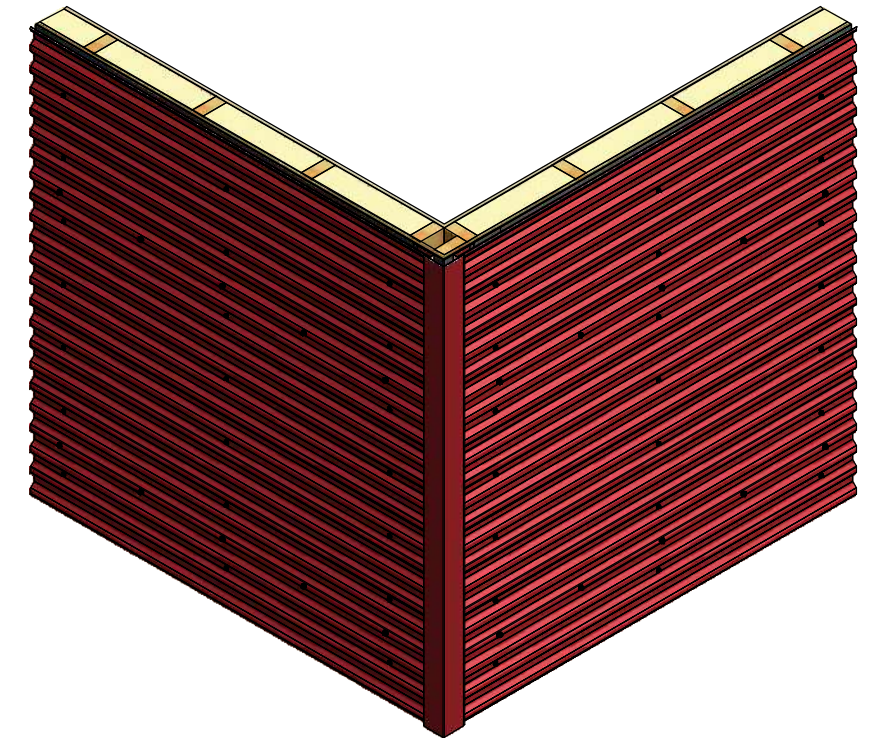
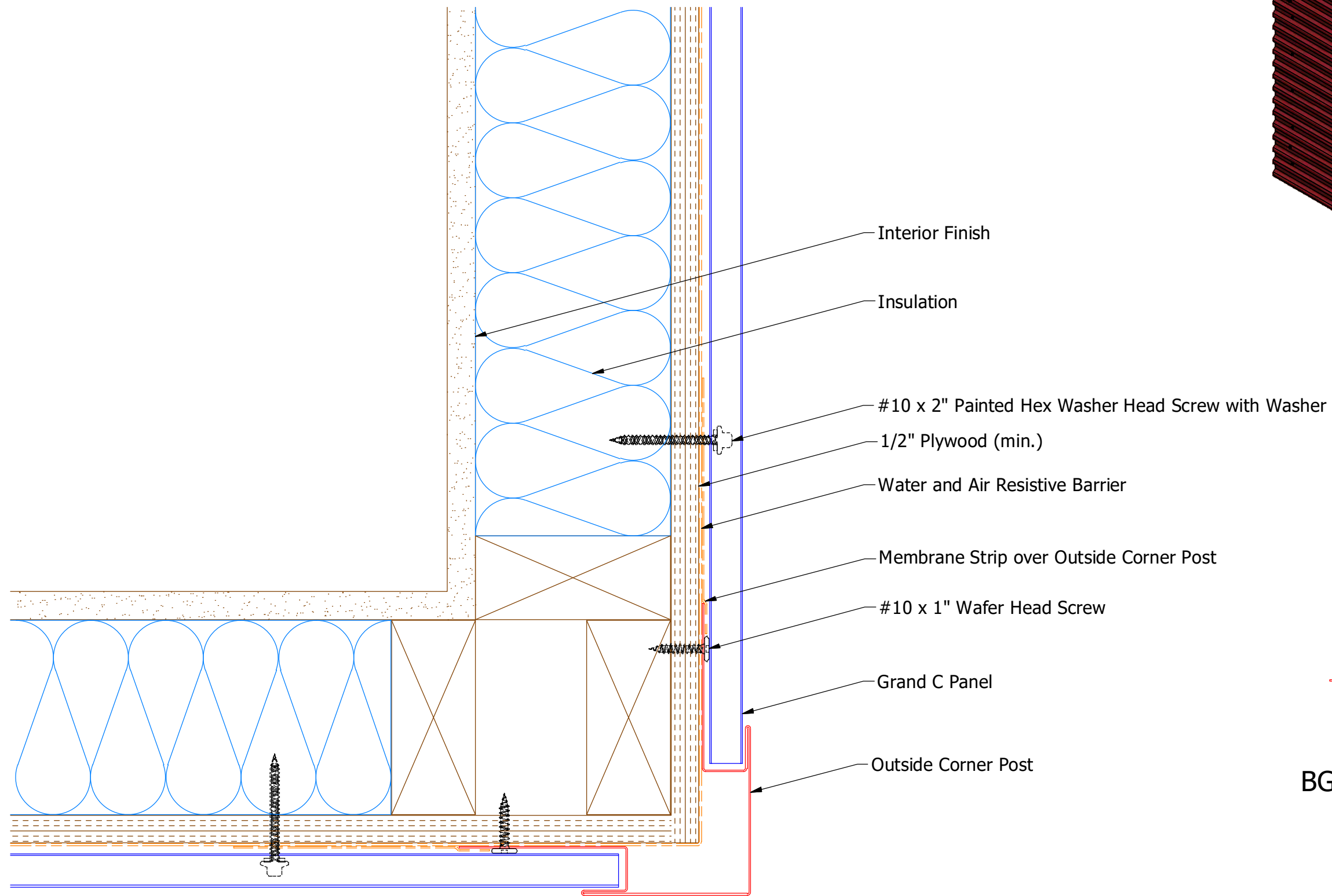
Horizontal Panel



BGA601 - Inside Corner Post

					<div><div><div>ATAS</div><div>ATAS INTERNATIONAL, INC</div><div>Allentown PA</div><div>610-395-8445</div><div>Mesa AZ</div><div>480-558-7210</div></div></div>			
					TITLE Grand C Inside Corner Detail			
					DWG. NO.		DR KRK	DATE 2/18/2016
							APP DAS	DATE 8/9/16
					MATERIAL		SH. SIZE B	SCALE X:X
REV. NO.	DATE	DESCRIPTION OF REVISION	BY	APP				

## Horizontal Panel

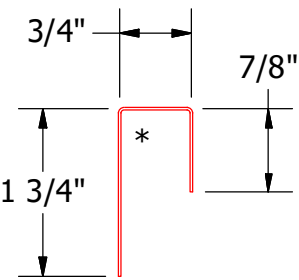
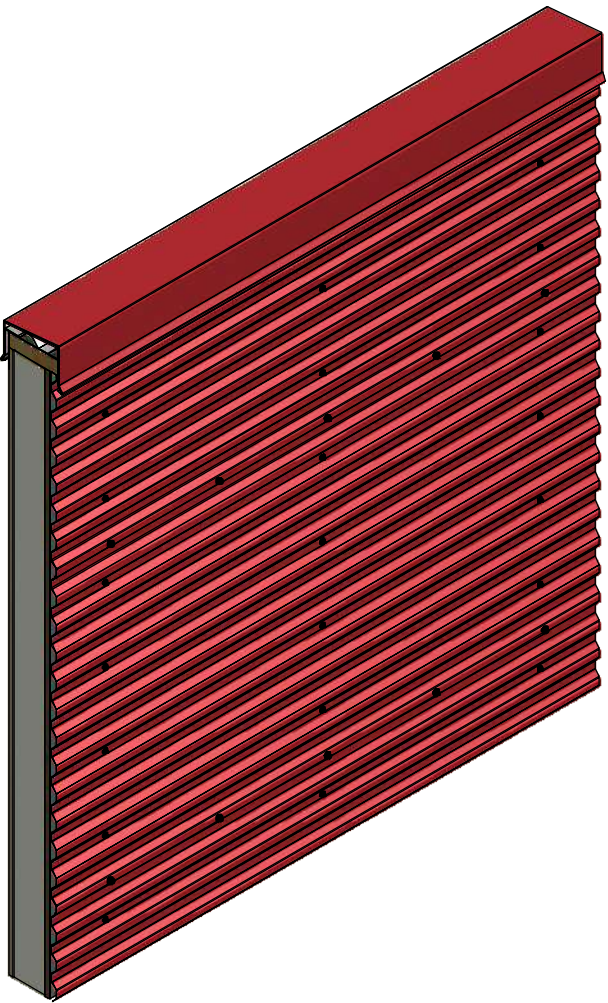
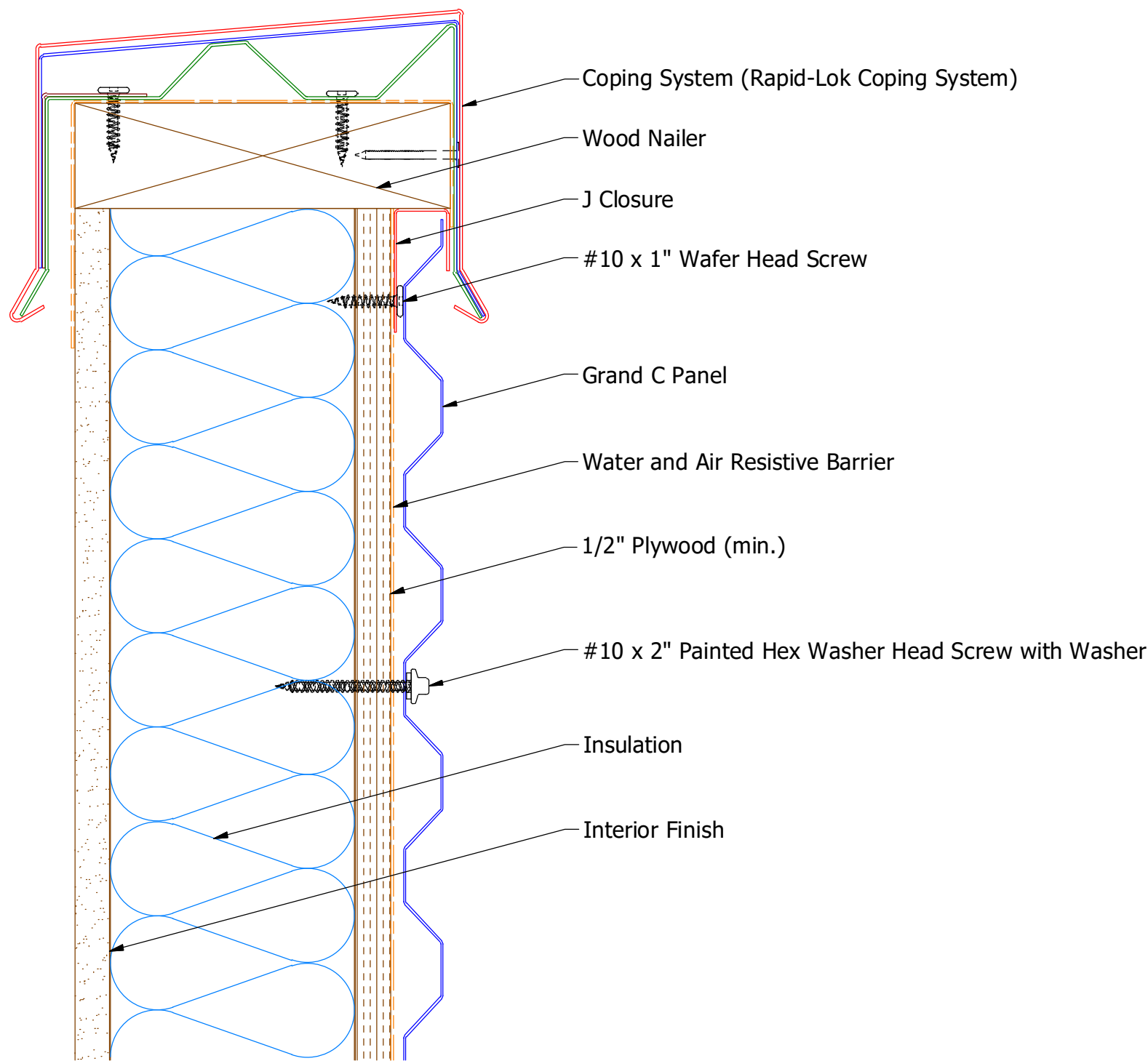


## BGA602 - Outside Corner Post

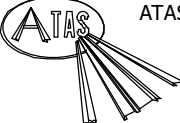
					TITLE <b>Grand C Outside Corner Detail</b>			
					DWG. NO.		DR <b>KRK</b>	DATE <b>2/18/2016</b>
					MATERIAL		APP <b>DAS</b>	DATE <b>8/8/16</b>
REV. NO.	DATE	DESCRIPTION OF REVISION	BY	APP			SH. SIZE <b>B</b>	SCALE <b>X:X</b>



Horizontal Panel



BGA270 - J Closure

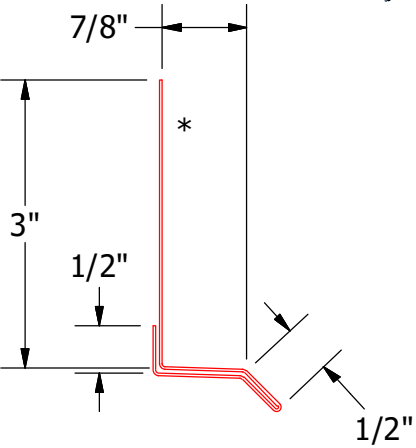
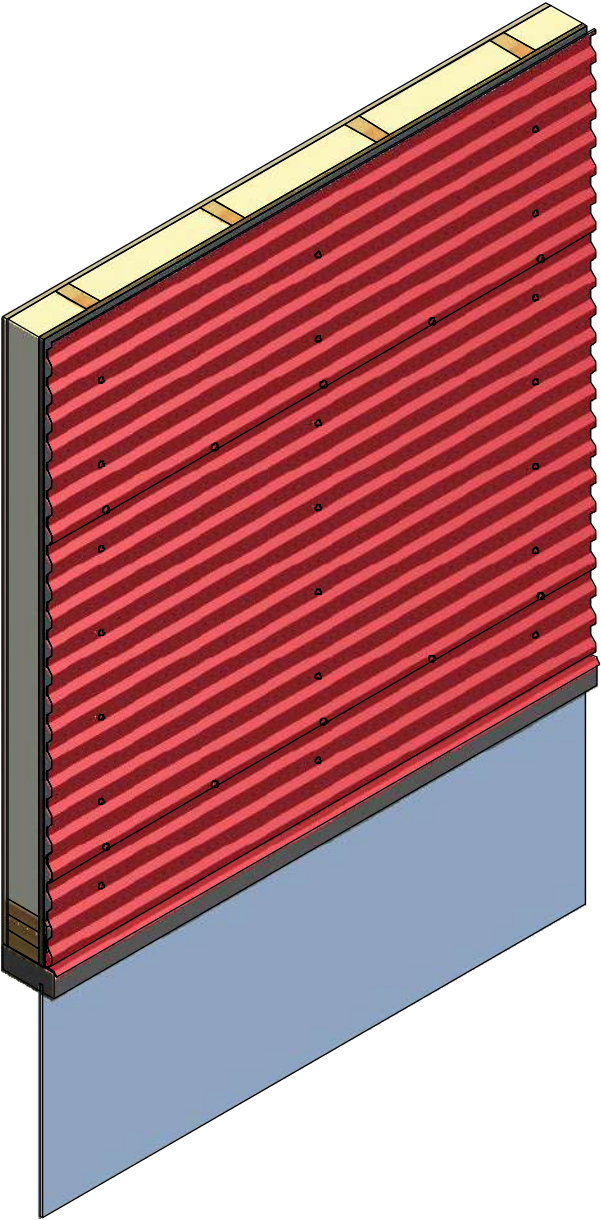
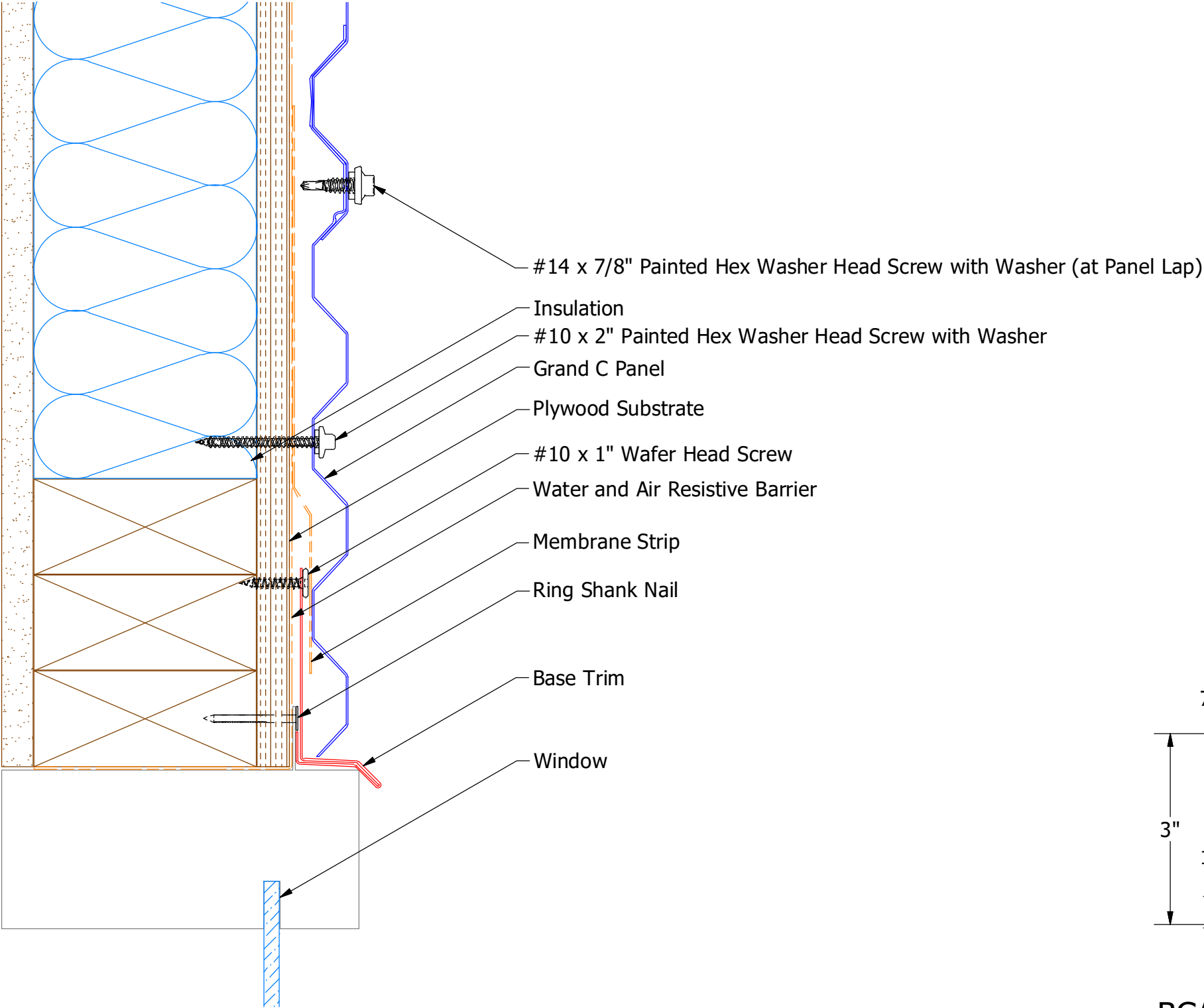


ATAS INTERNATIONAL, INC  
Allentown PA  
610-395-8445  
Mesa AZ  
480-558-7210

TITLE Grand C Top of Wall Detail			
DWG. NO.		DR KRK	DATE 2/18/2016
		APP DAS	DATE 8/8/16
MATERIAL		SH. SIZE B	SCALE X:X

REV. NO.	DATE	DESCRIPTION OF REVISION	BY	APP

Horizontal Panel



BGA661 - Base Trim



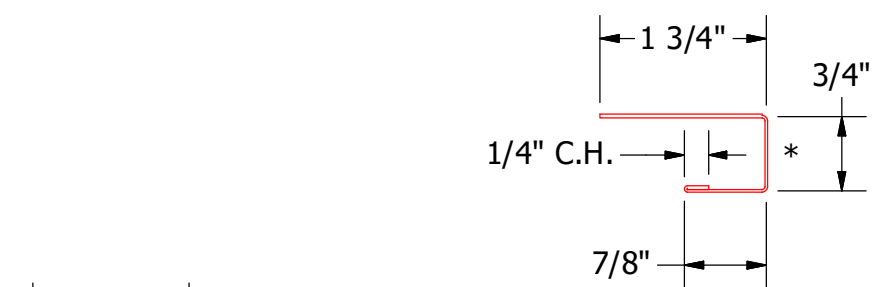
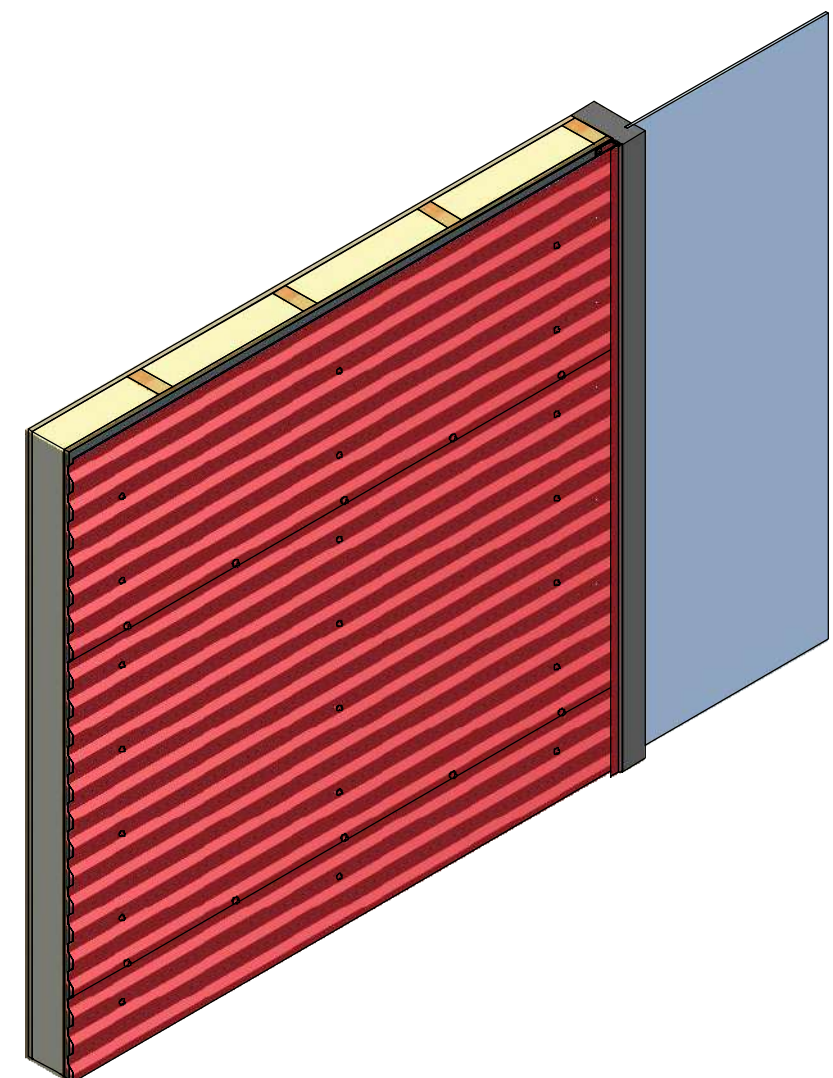
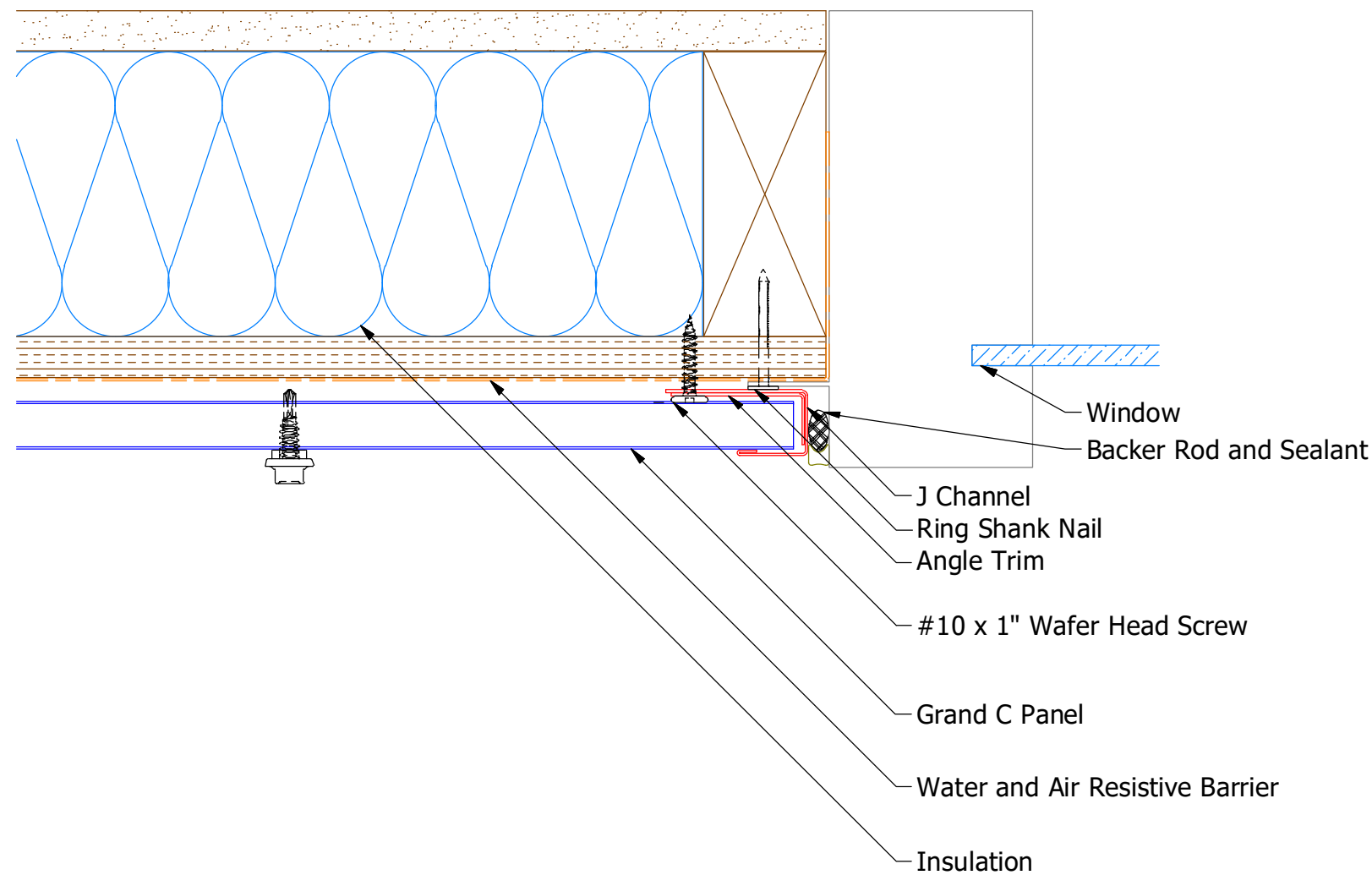
ATAS INTERNATIONAL, INC  
Allentown PA  
610-395-8445  
Mesa AZ  
480-558-7210

TITLE Grand C Head Window Flange Detail			
DWG. NO.		DR MBP	DATE 7/27/2018
MATERIAL		APP	DATE
REV. NO.	DATE	DESCRIPTION OF REVISION	BY APP
SH. SIZE B		SCALE X:X	

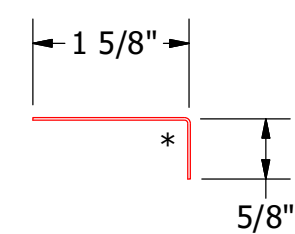
REV. NO.	DATE	DESCRIPTION OF REVISION	BY	APP



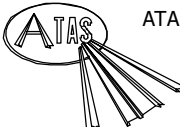
Horizontal Panel



BGA034 - J Channel



BGA680 - Angle Trim

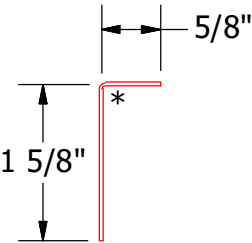
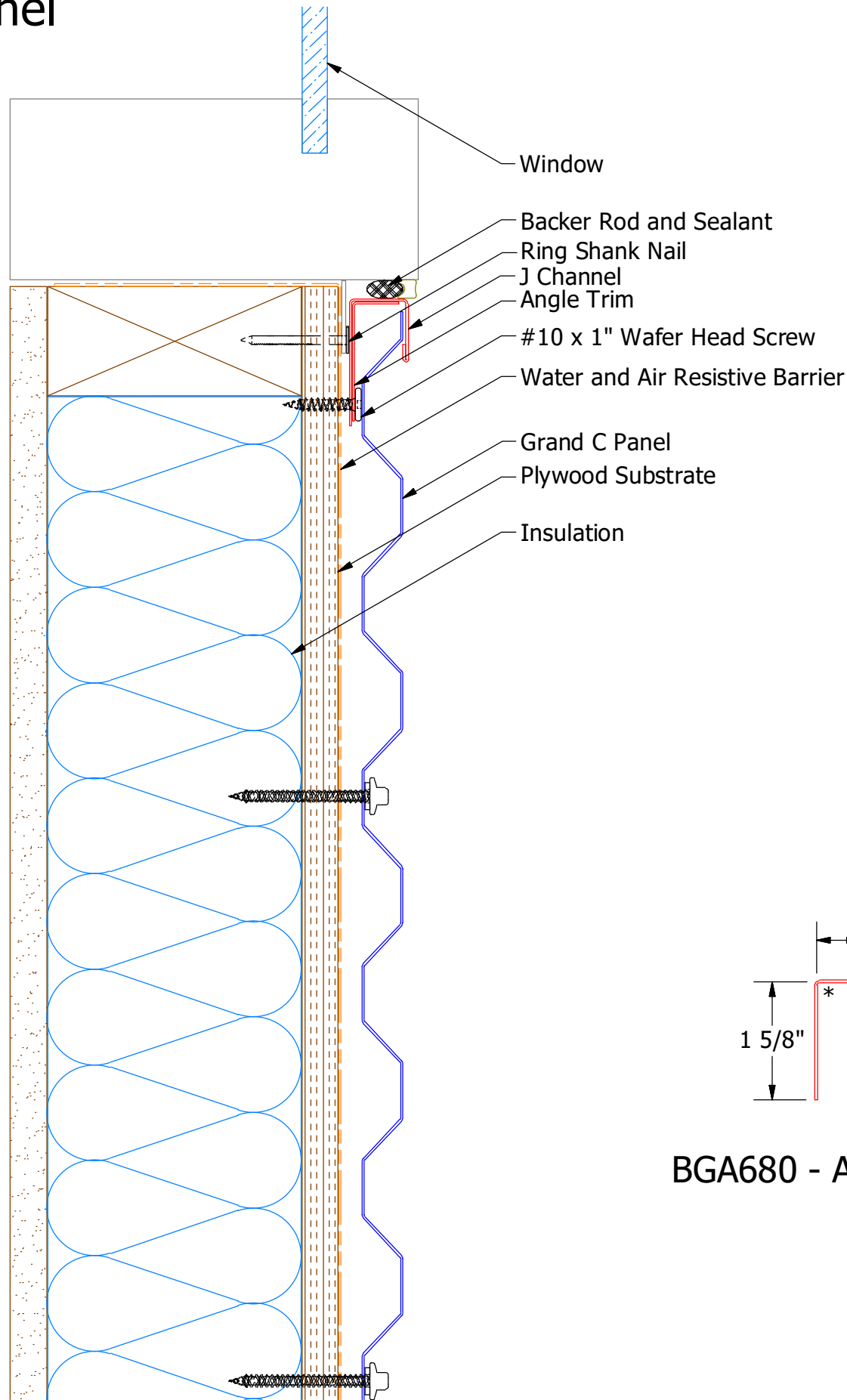


ATAS INTERNATIONAL, INC  
Allentown PA  
610-395-8445  
Mesa AZ  
480-558-7210

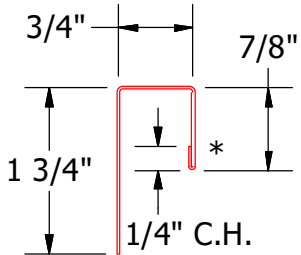
TITLE Grand C Jamb Window Flange Detail			
DWG. NO.		DR MBP	DATE 7/30/2018
APP		DATE	
MATERIAL		SH. SIZE B	SCALE X:X

REV. NO.	DATE	DESCRIPTION OF REVISION	BY	APP

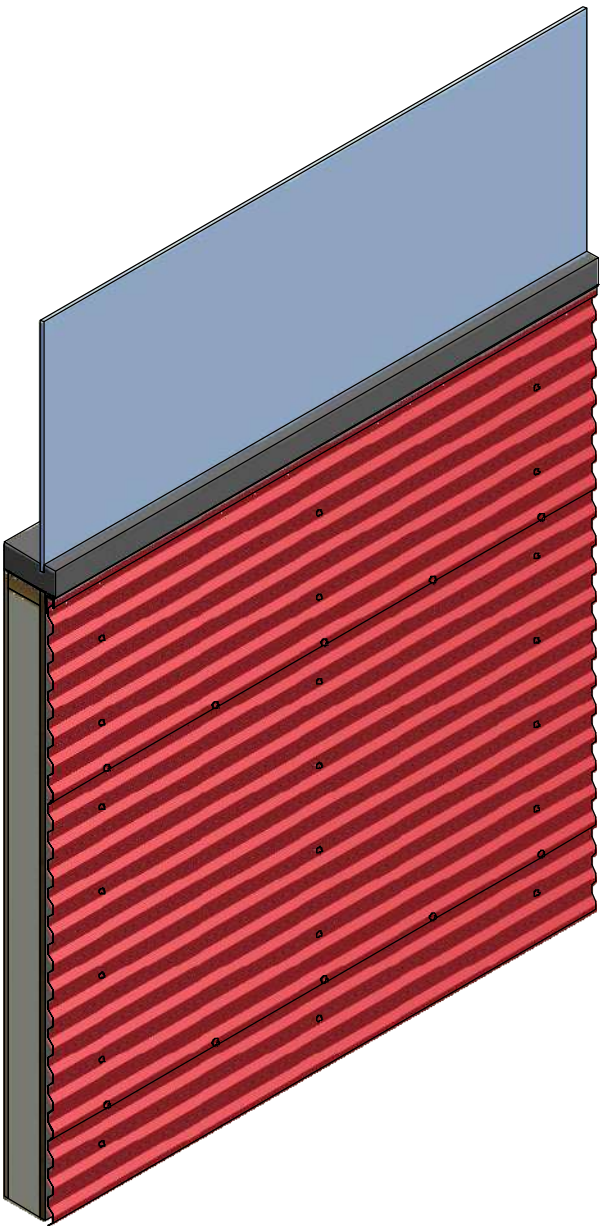
Horizontal Panel

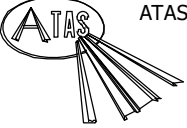


BGA680 - Angle Trim



BGA034 - J Channel





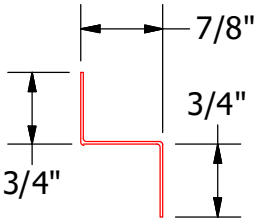
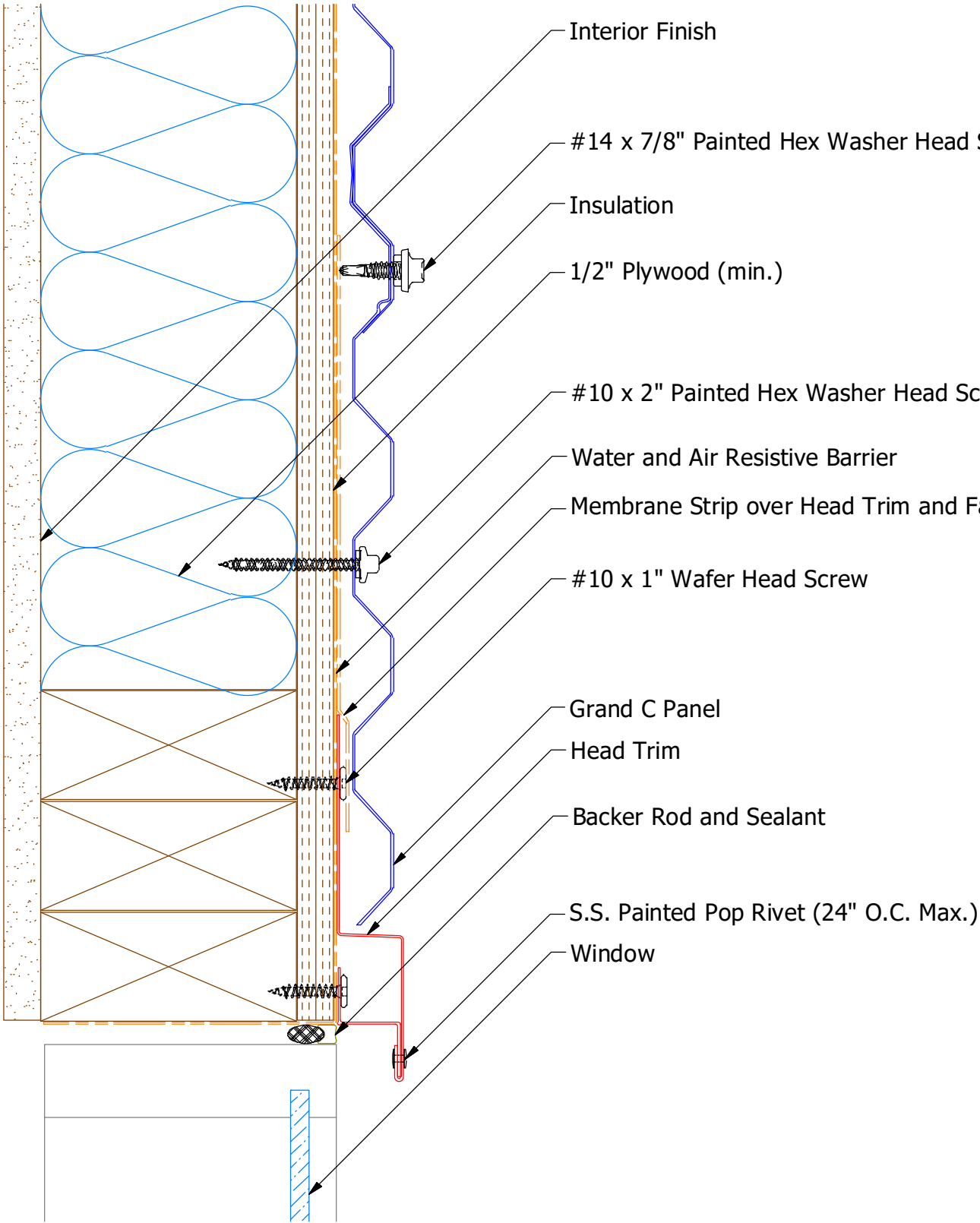
ATAS INTERNATIONAL, INC  
Allentown PA  
610-395-8445  
Mesa AZ  
480-558-7210

TITLE  
Grand C Window Sill Flange Detail

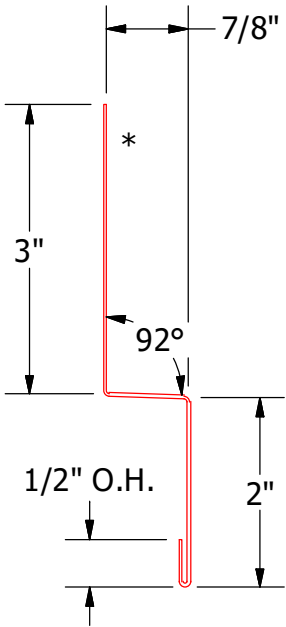
DWG. NO.	DR MBP	DATE 7/30/2018
MATERIAL	APP	DATE
SH. SIZE B	SCALE X:X	

REV. NO.	DATE	DESCRIPTION OF REVISION	BY	APP

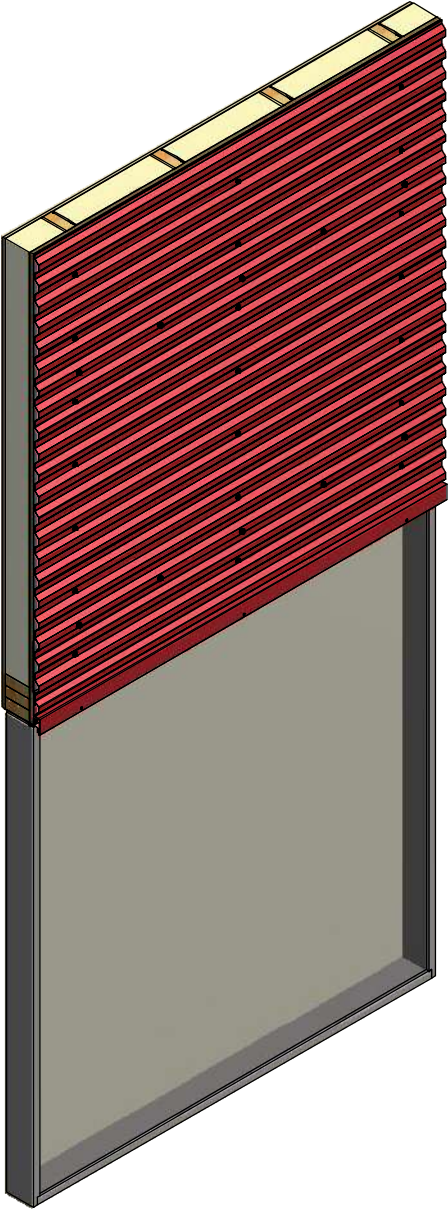
Horizontal Panel

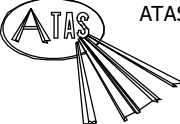


Support Z



BGA550 - Head Trim



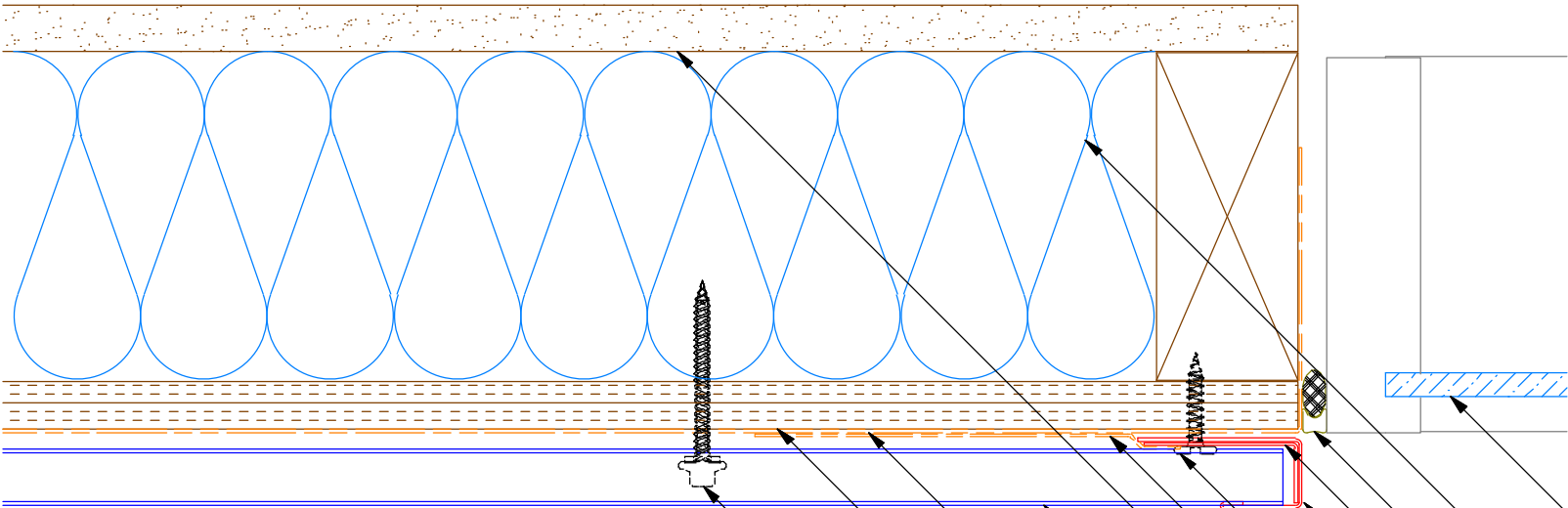


ATAS INTERNATIONAL, INC  
Allentown PA  
610-395-8445  
Mesa AZ  
480-558-7210

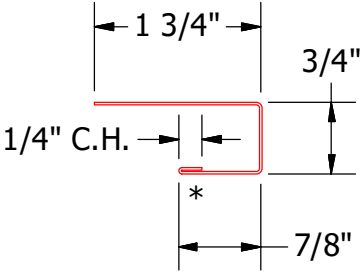
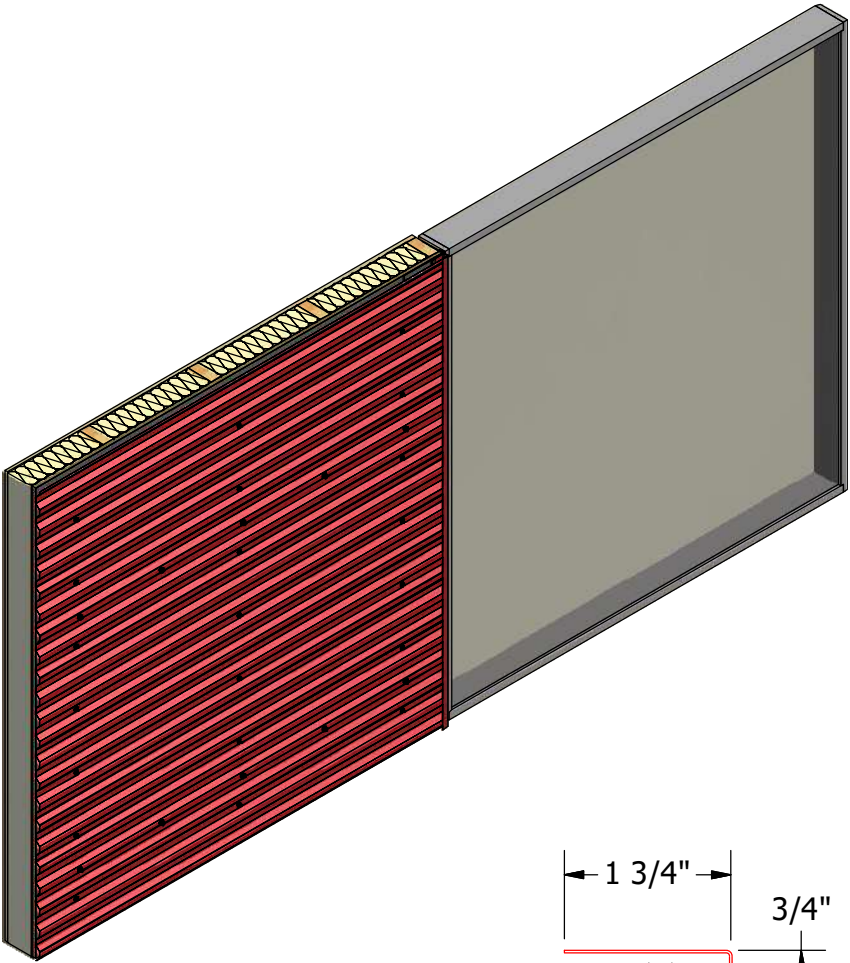
TITLE Grand C Head Existing Window Detail			
DWG. NO.		DR MBP	DATE 7/18/18
MATERIAL		APP	DATE
REV. NO.	DATE	DESCRIPTION OF REVISION	BY APP
SH. SIZE B		SCALE X:X	



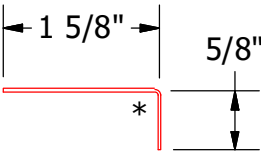
Horizontal Panel



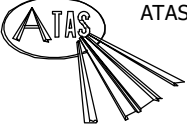
- Window
- Insulation
- Backer Rod and Sealant
- Angle Trim
- J Channel
- #10 x 1" Wafer Head Screw
- Membrane Strip
- Interior Finish
- Grand C Panel
- Water and Air Resistive Barrier
- 1/2" Plywood (min.)
- #10 x 2" Painted Hex Washer Head Screw with Washer



BGA034 - J Channel



BGA680 - Angle Trim

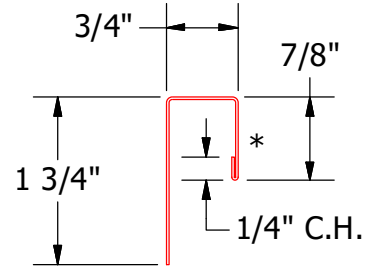
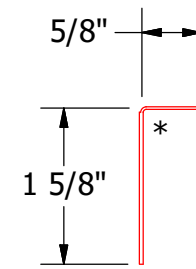
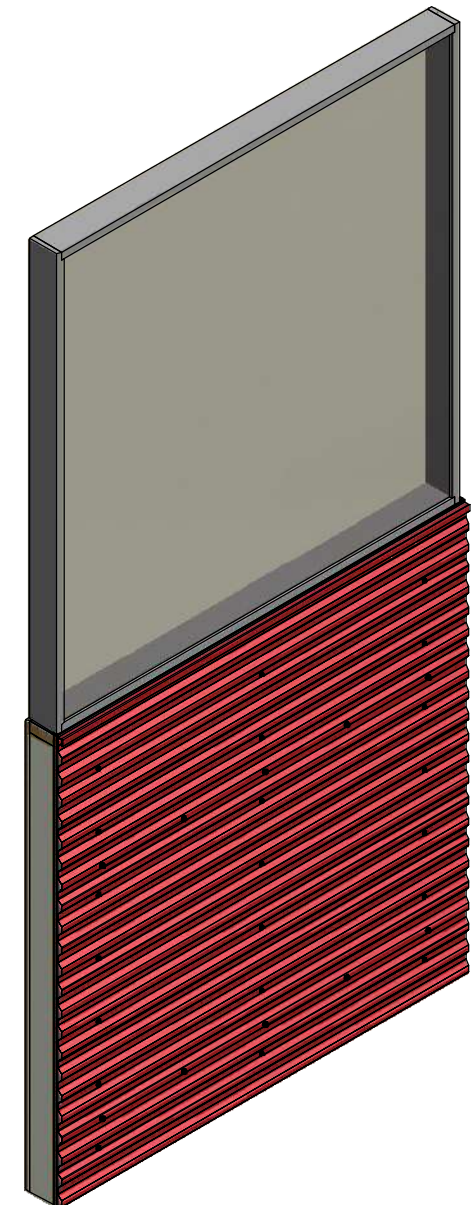
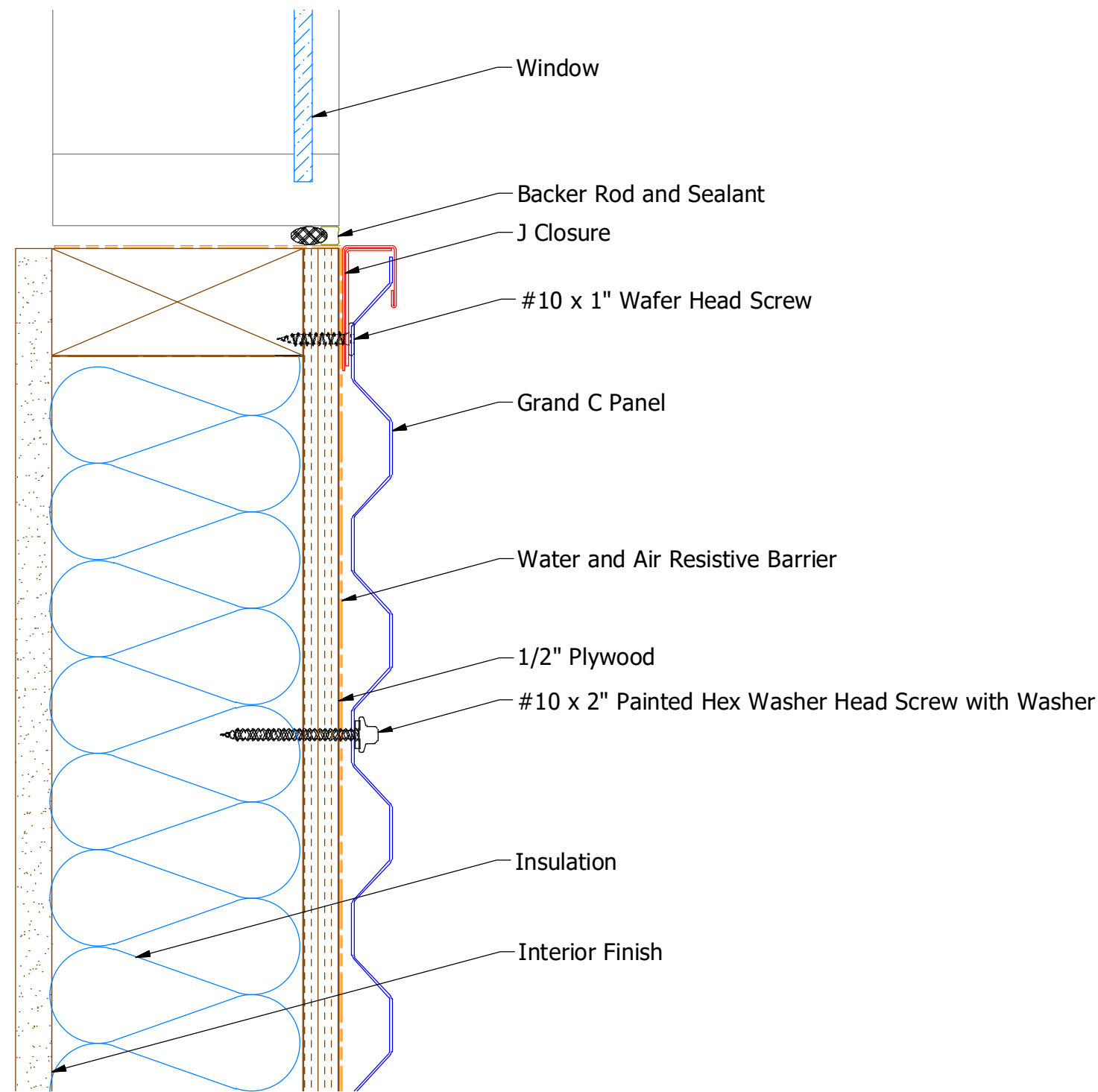


ATAS INTERNATIONAL, INC  
Allentown PA  
610-395-8445  
Mesa AZ  
480-558-7210

TITLE Grand C Jamb Existing Window Detail			
DWG. NO.		DR MBP	DATE 7/18/18
APP		DATE	
MATERIAL		SH. SIZE B	SCALE X:X

REV. NO.	DATE	DESCRIPTION OF REVISION	BY	APP

Horizontal Panel



BGA280 - Angle Trim

BGA034 - J Channel

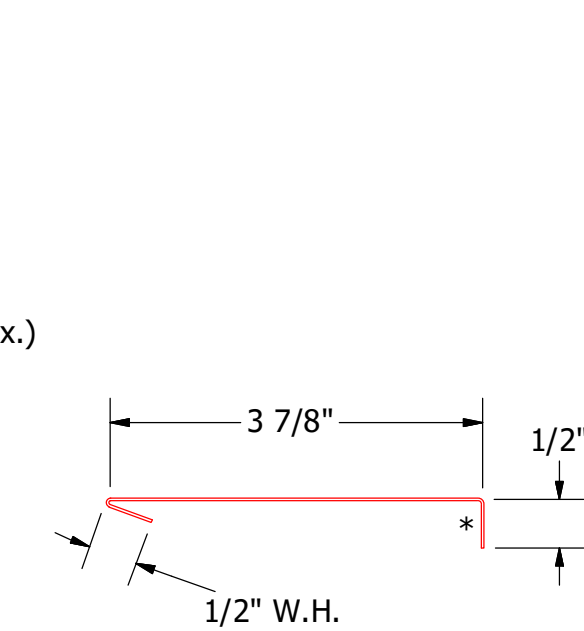
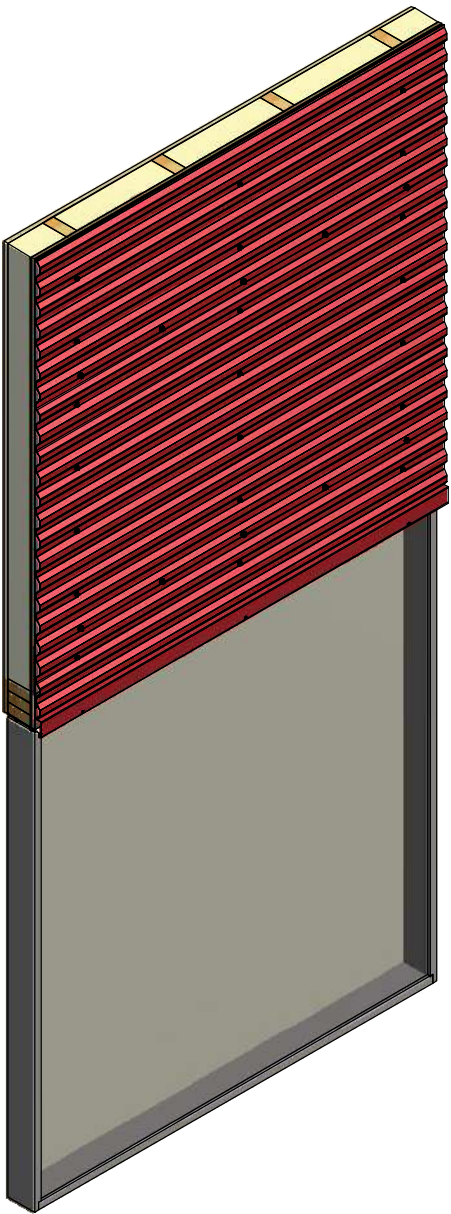
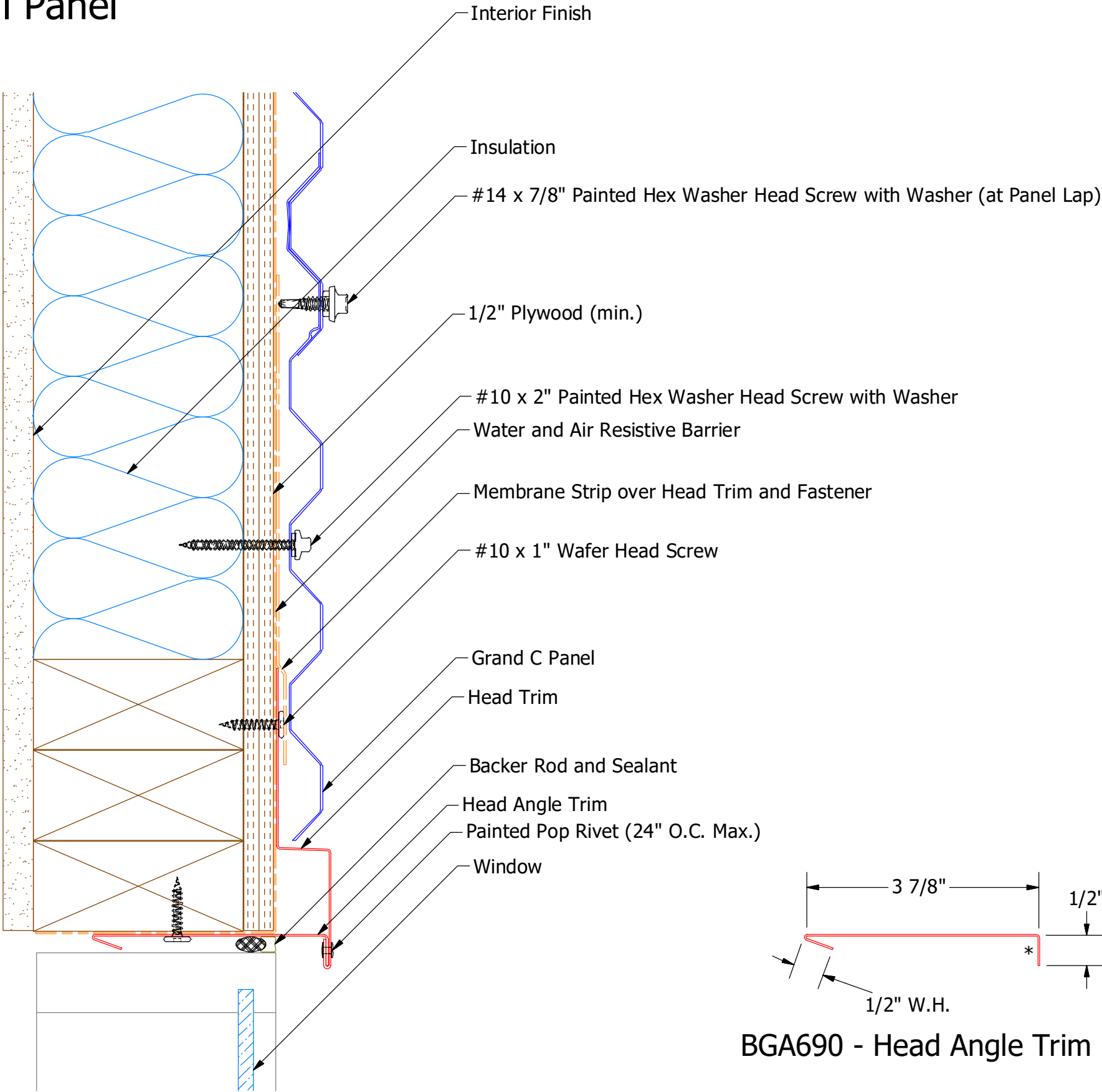


ATAS INTERNATIONAL, INC  
Allentown PA  
610-395-8445  
Mesa AZ  
480-558-7210

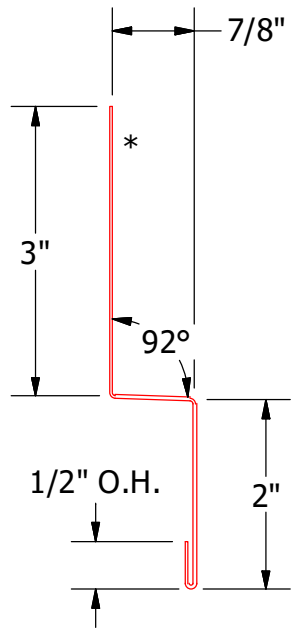
TITLE Grand C Window Sill Existing Window Detail			
DWG. NO.		DR MBP	DATE 7/18/18
MATERIAL		APP	DATE
REV. NO.	DATE	DESCRIPTION OF REVISION	BY APP
SH. SIZE B		SCALE X:X	

REV. NO.	DATE	DESCRIPTION OF REVISION	BY	APP

Horizontal Panel



BGA690 - Head Angle Trim



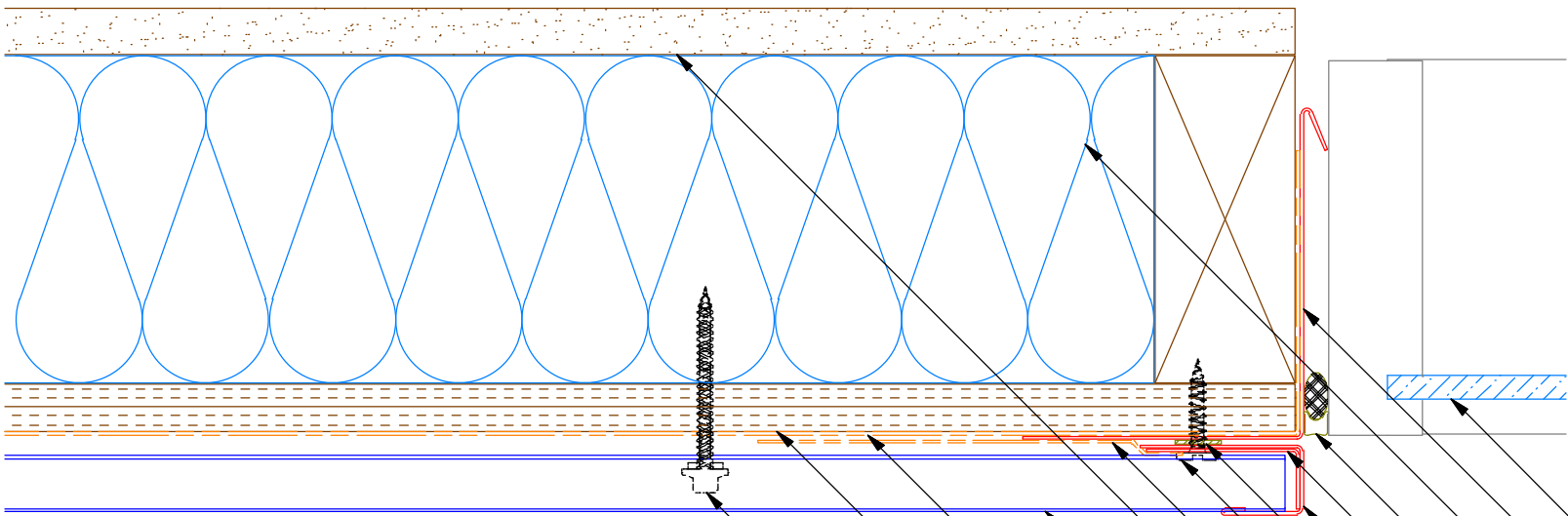
BGA550 - Head Trim

 ATAS INTERNATIONAL, INC Allentown PA 610-395-8445 Mesa AZ 480-558-7210			
TITLE Grand C Head Detail			
DWG. NO.		DR KRK	DATE 2/17/2016
		APP DAS	DATE 8/8/16
MATERIAL		SH. SIZE B	SCALE X:X

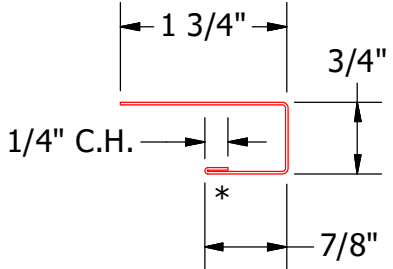
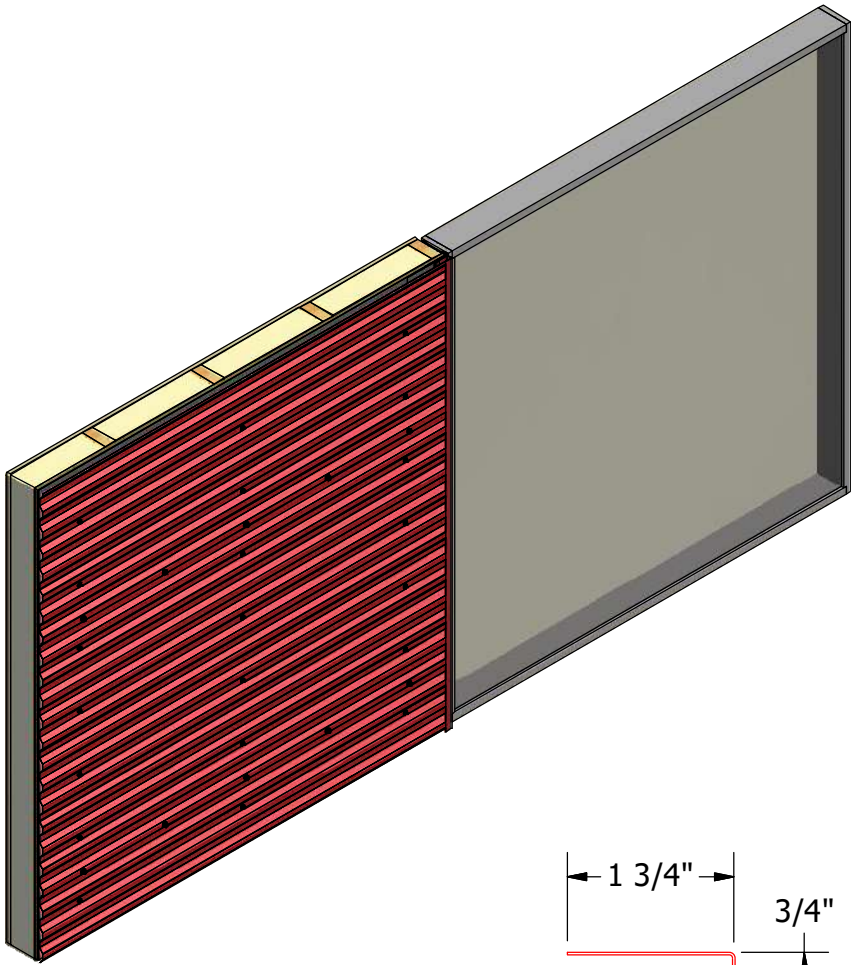
REV. NO.	DATE	DESCRIPTION OF REVISION	BY	APP



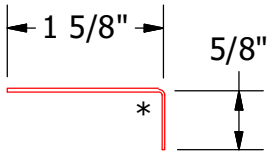
Horizontal Panel



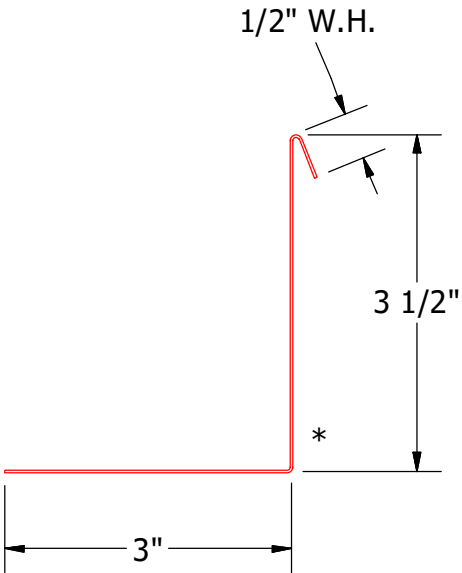
- Window
- Angle Trim with Return
- Insulation
- Backer Rod and Sealant
- Angle Trim
- J Channel
- Butyl Tape
- #10 x 1" Wafer Head Screw
- Membrane Strip over J Channel and Angle Trim
- Interior Finish
- Grand C Panel
- Water and Air Resistive Barrier
- 1/2" Plywood (min.)
- #10 x 2" Painted Hex Washer Head Screw with Washer



BGA034 - J Channel



BGA680 - Angle Trim



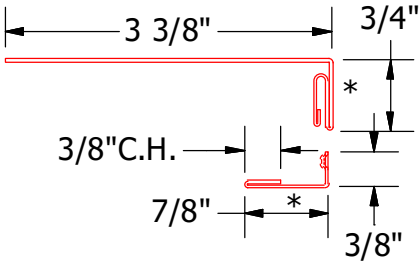
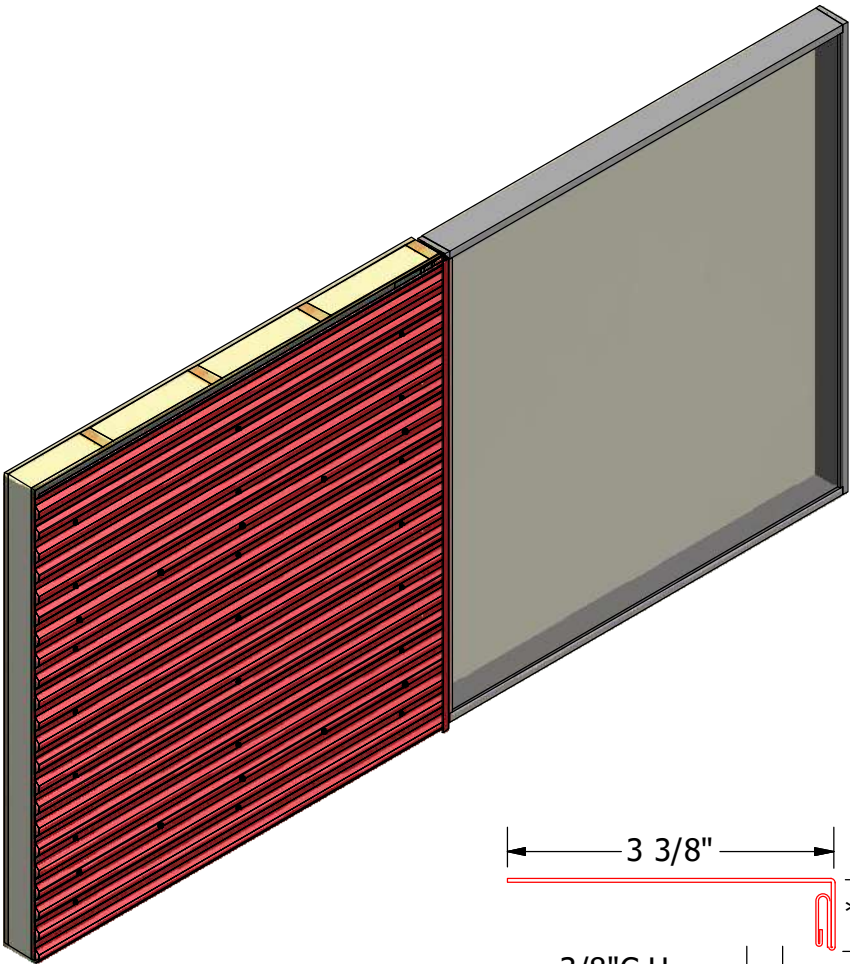
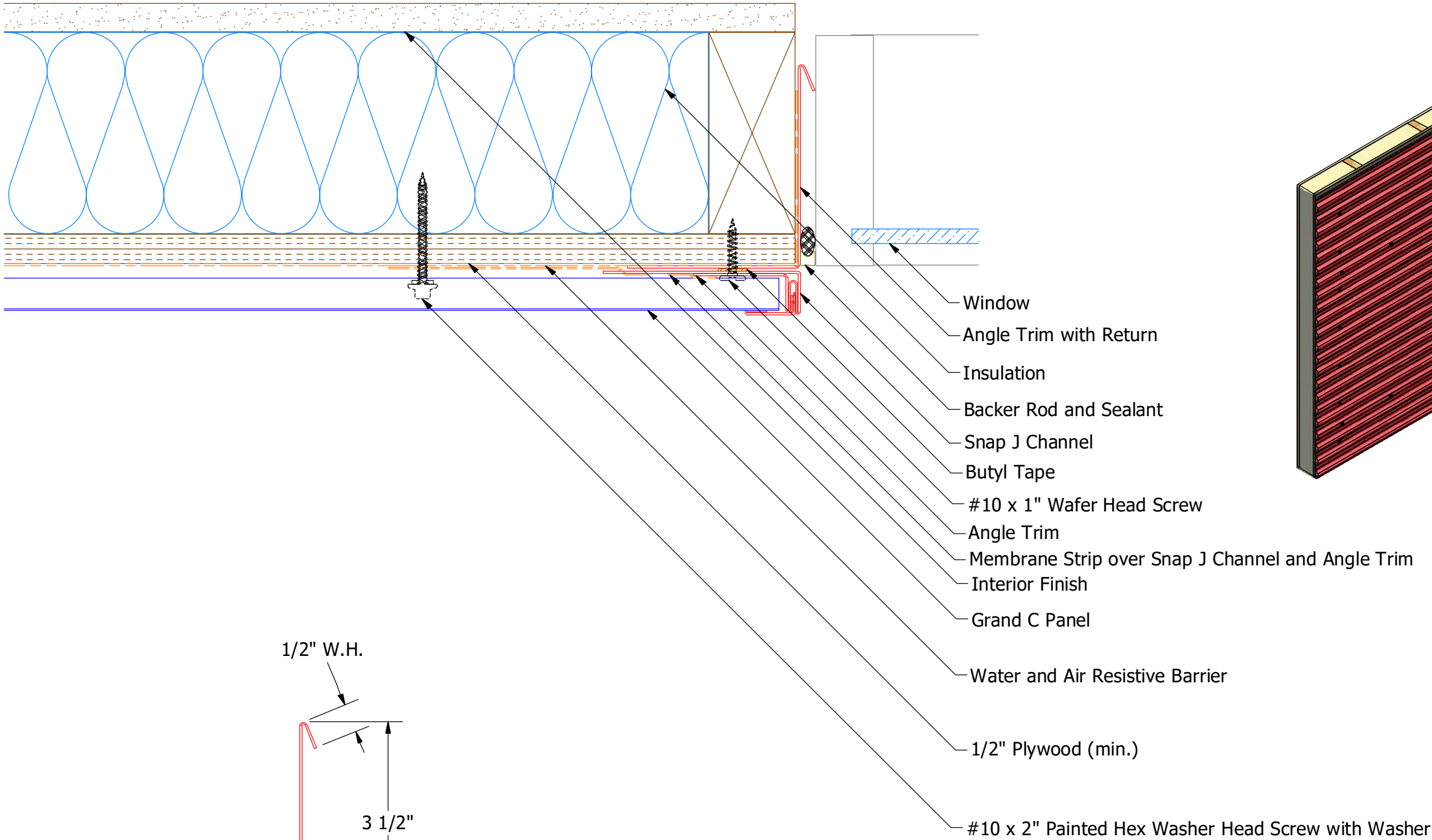
BGA683 - Angle Trim with Return

TITLE				Grand C Jamb Detail			
DWG. NO.				DR	KRK	DATE	2/18/2016
				APP	DAS	DATE	8/8/16
MATERIAL				SH. SIZE	B	SCALE	X:X
REV. NO.	DATE	DESCRIPTION OF REVISION	BY	APP			

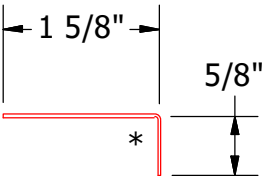


ATAS INTERNATIONAL, INC  
Allentown PA  
610-395-8445  
Mesa AZ  
480-558-7210

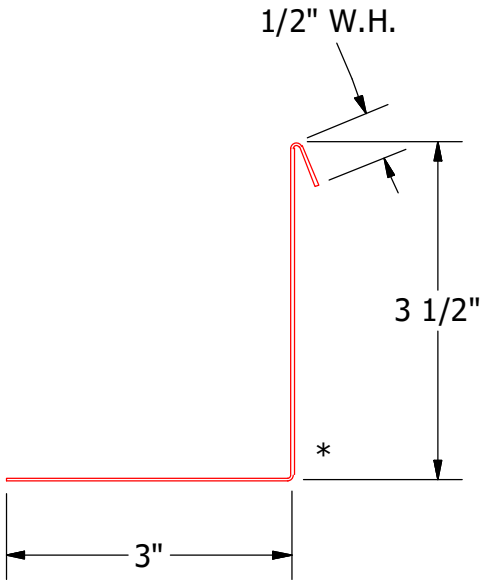
Horizontal Panel - Alternate Detail



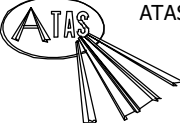
BGA039 - Snap J Channel



BGA680 - Angle Trim



BGA683 - Angle Trim with Return

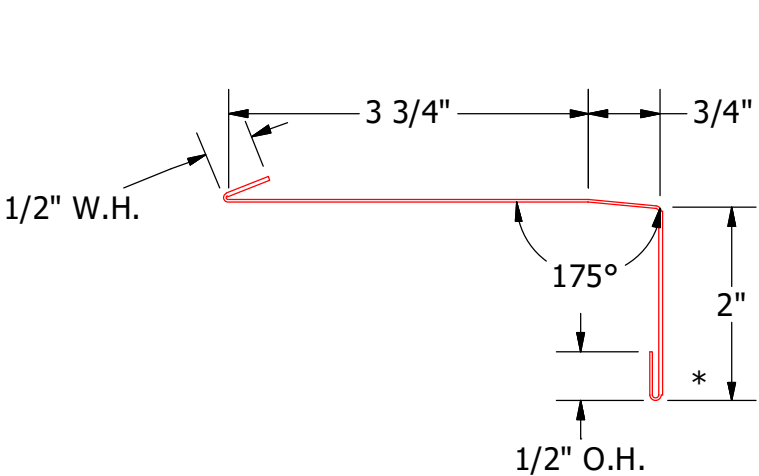
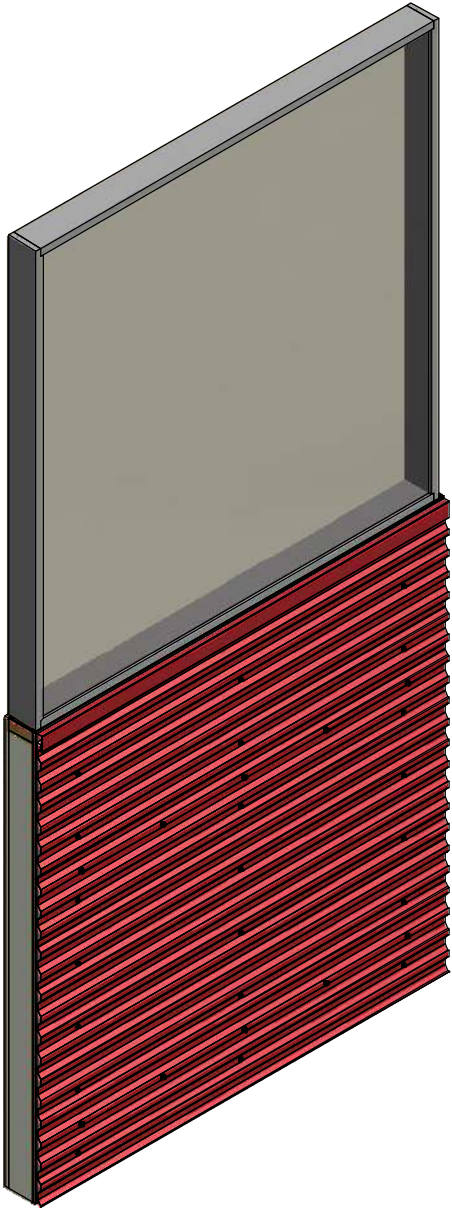
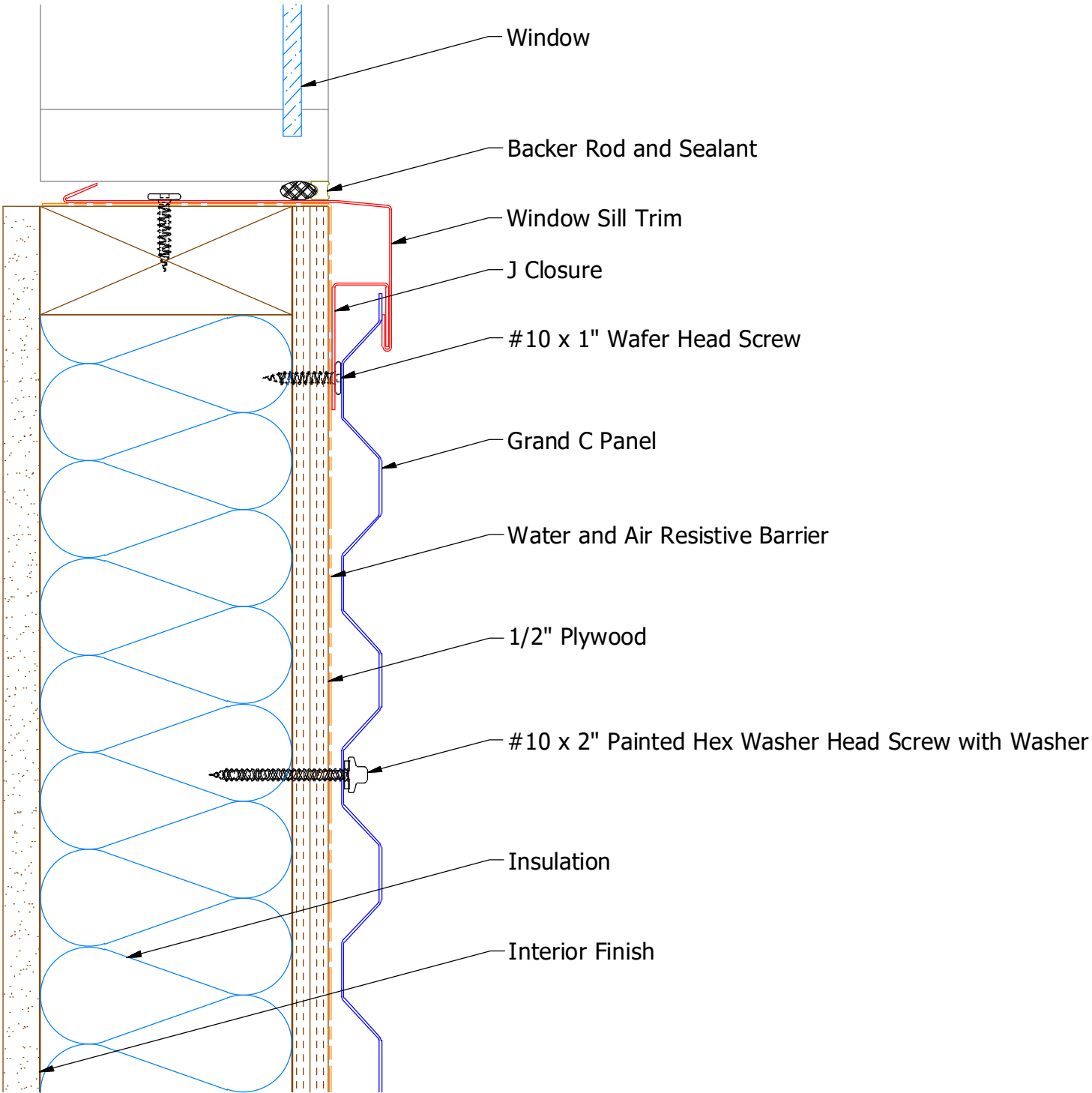


ATAS INTERNATIONAL, INC  
Allentown PA  
610-395-8445  
Mesa AZ  
480-558-7210

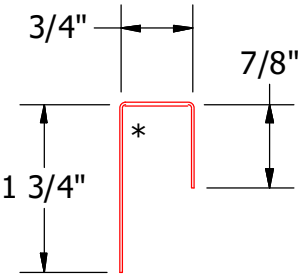
TITLE Grand C Jamb Detail			
DWG. NO.		DR KRK	DATE 2/18/2016
		APP DAS	DATE 8/8/16
MATERIAL		SH. SIZE B	SCALE X:X

REV. NO.	DATE	DESCRIPTION OF REVISION	BY	APP

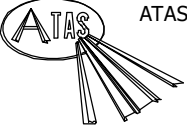
Horizontal Panel



BGA670 - Window Sill Trim



BGA270 - J Closure

 ATAS INTERNATIONAL, INC Allentown PA 610-395-8445 Mesa AZ 480-558-7210			
TITLE Grand C Window Sill Detail			
DWG. NO.		DR KRK	DATE 2/19/2016
		APP DAS	DATE 8/8/16
MATERIAL		SH. SIZE B	SCALE X:X

REV. NO.	DATE	DESCRIPTION OF REVISION	BY	APP