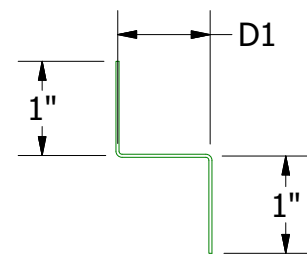
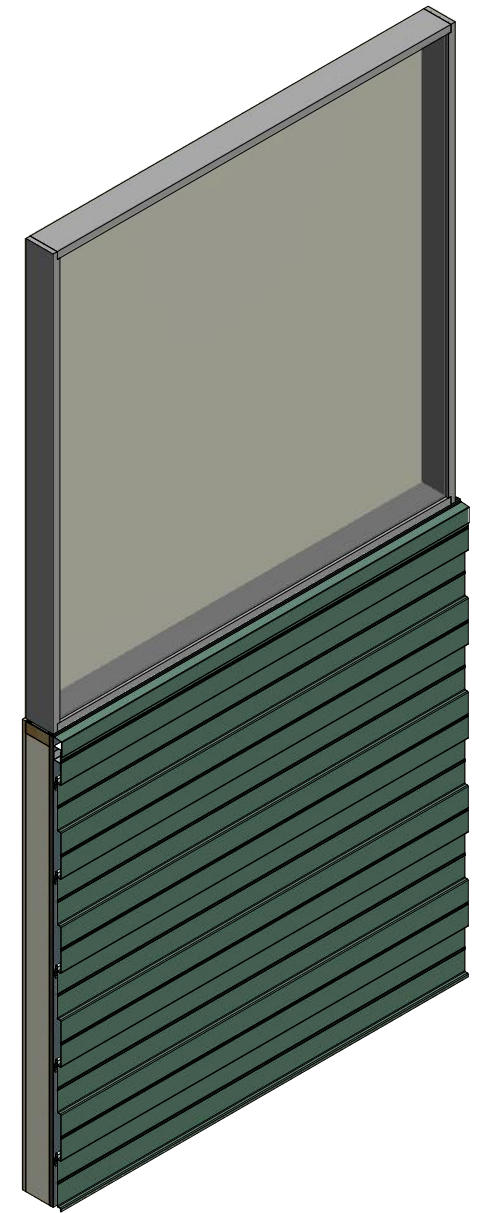
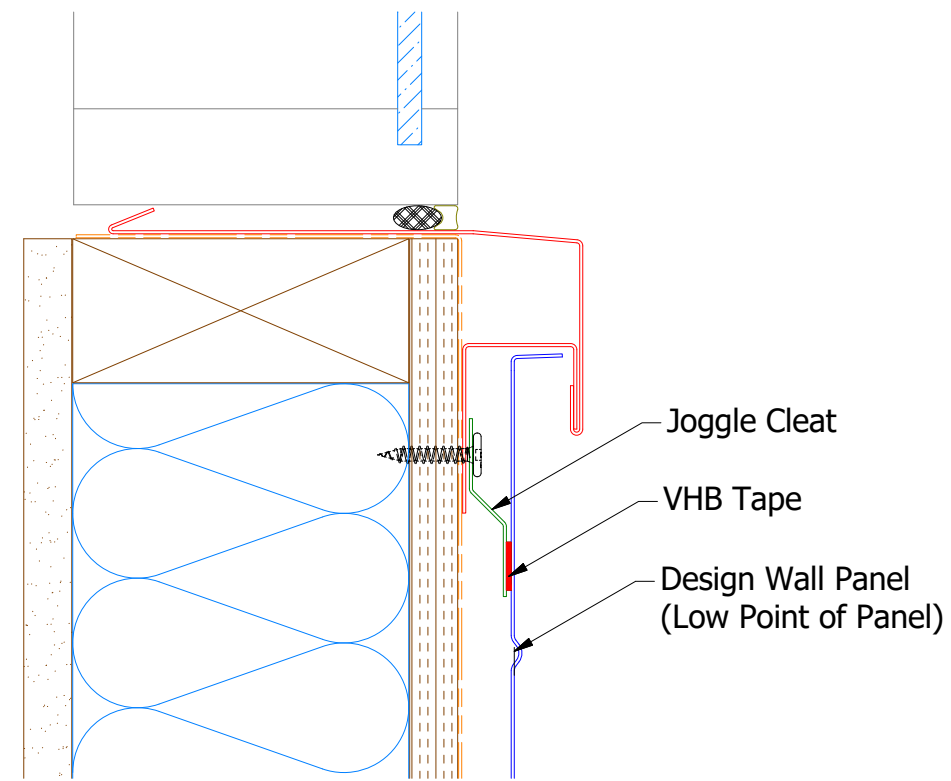
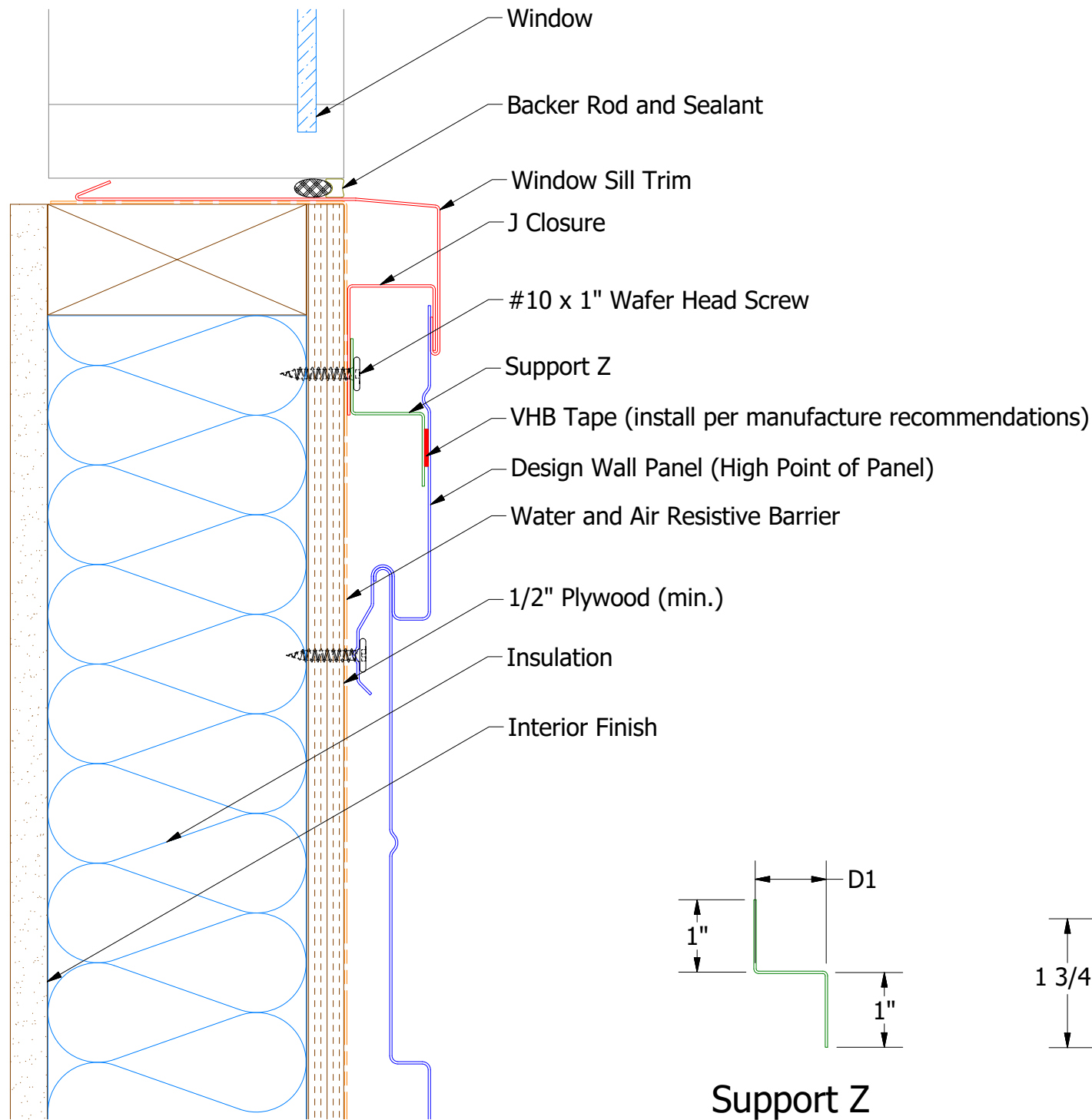
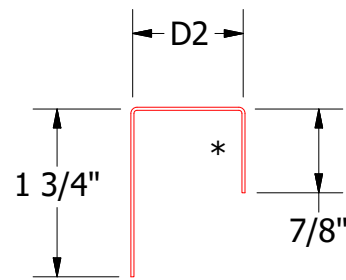


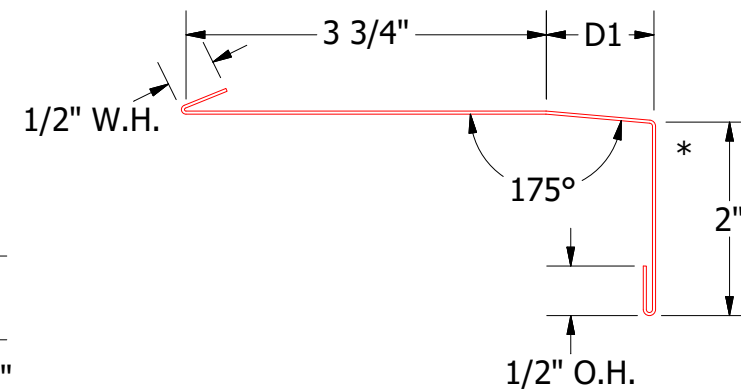
Horizontal Panel



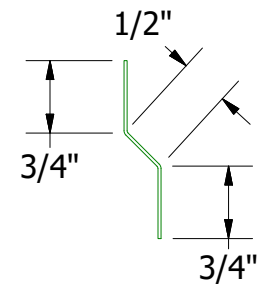
Support Z
 DWA681: D3= 1"
 DSA681: D3= 1 5/8"



J Closure
 DWA270: D2= 1 1/8"
 DSA270: D2= 1 7/8"



Window Sill Trim
 DWA670: D1= 1 1/8"
 DSA670: D1= 1 7/8"



DWA975/DSA975 - Joggle Cleat

Note: * denotes color side.
Note: stainless steel pop rivets may be needed along with VHB tape for longer panels.

REV. NO.	DATE	DESCRIPTION OF REVISION	BY	APP
01	7/19/2021	Changed Pop Rivets to VHB Tape	DMR	

ATAS INTERNATIONAL, INC Allentown PA 610-395-8445 Mesa AZ 480-558-7210		TITLE	
		Design Wall Window Sill Detail	
DWG. NO.	DR	DMR	DATE
	APP	DAS	6/29/2016
MATERIAL	SH. SIZE	B	SCALE
			X:X