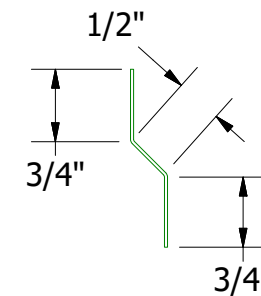
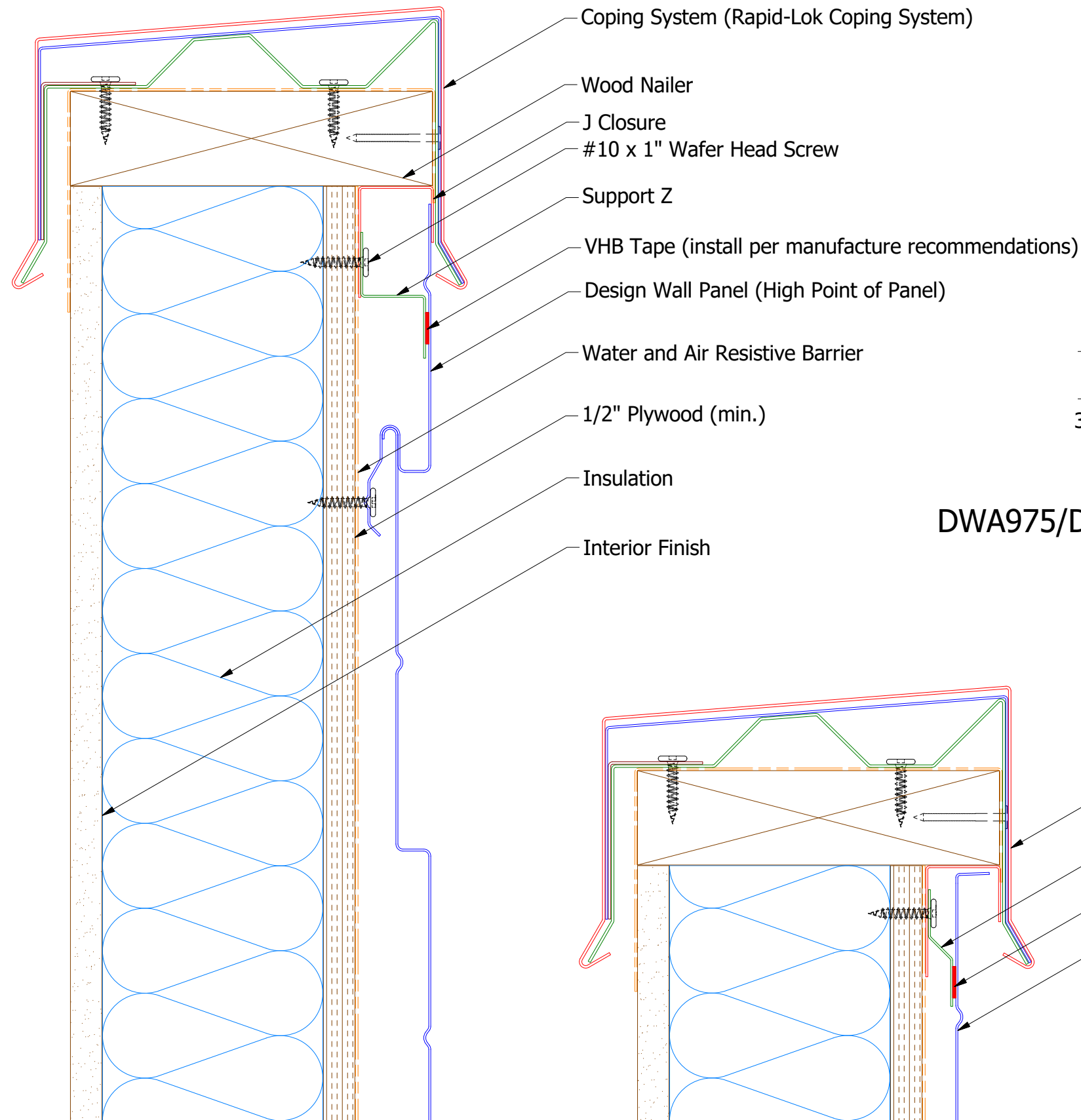
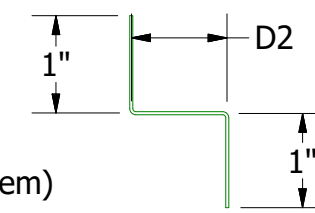
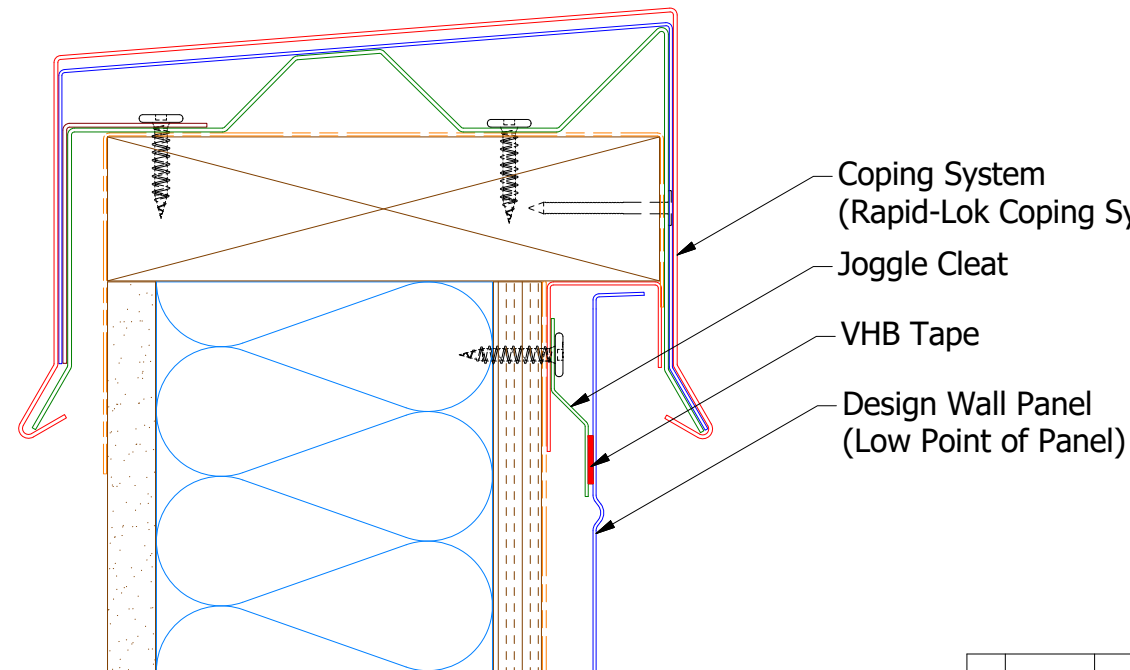
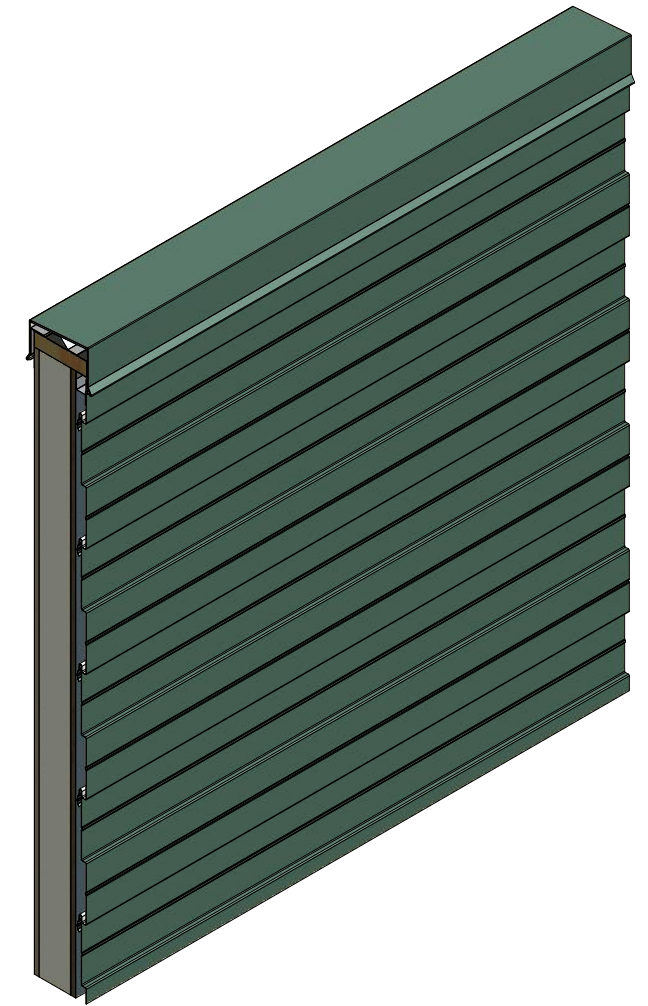


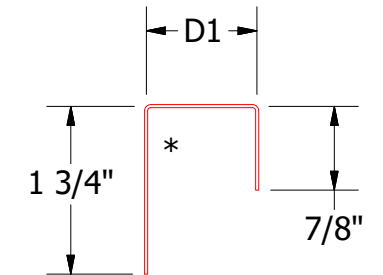
Horizontal Panel



DWA975/DSA975 - Joggle Cleat



Support Z
DWA681: D2= 1"
DSA681: D2= 1 5/8"



J Closure
DWA270: D1= 1 1/8"
DSA270: D1= 1 7/8"

Note: * denotes color side.
Note: stainless steel pop rivets maybe needed along with VHB tape for longer panels.

ATAS ATAS INTERNATIONAL, INC
Allentown PA
610-395-8445
Mesa AZ
480-558-7210

TITLE: Design Wall Top of Wall Detail

DWG. NO.	DR	DMR	DATE
01	APP	DAS	6/30/2016
REV. NO.	DATE	DESCRIPTION OF REVISION	BY
		Changed Pop Rivets to VHB Tape	DMR
			APP

MATERIAL: SH. SIZE: B SCALE: X:X