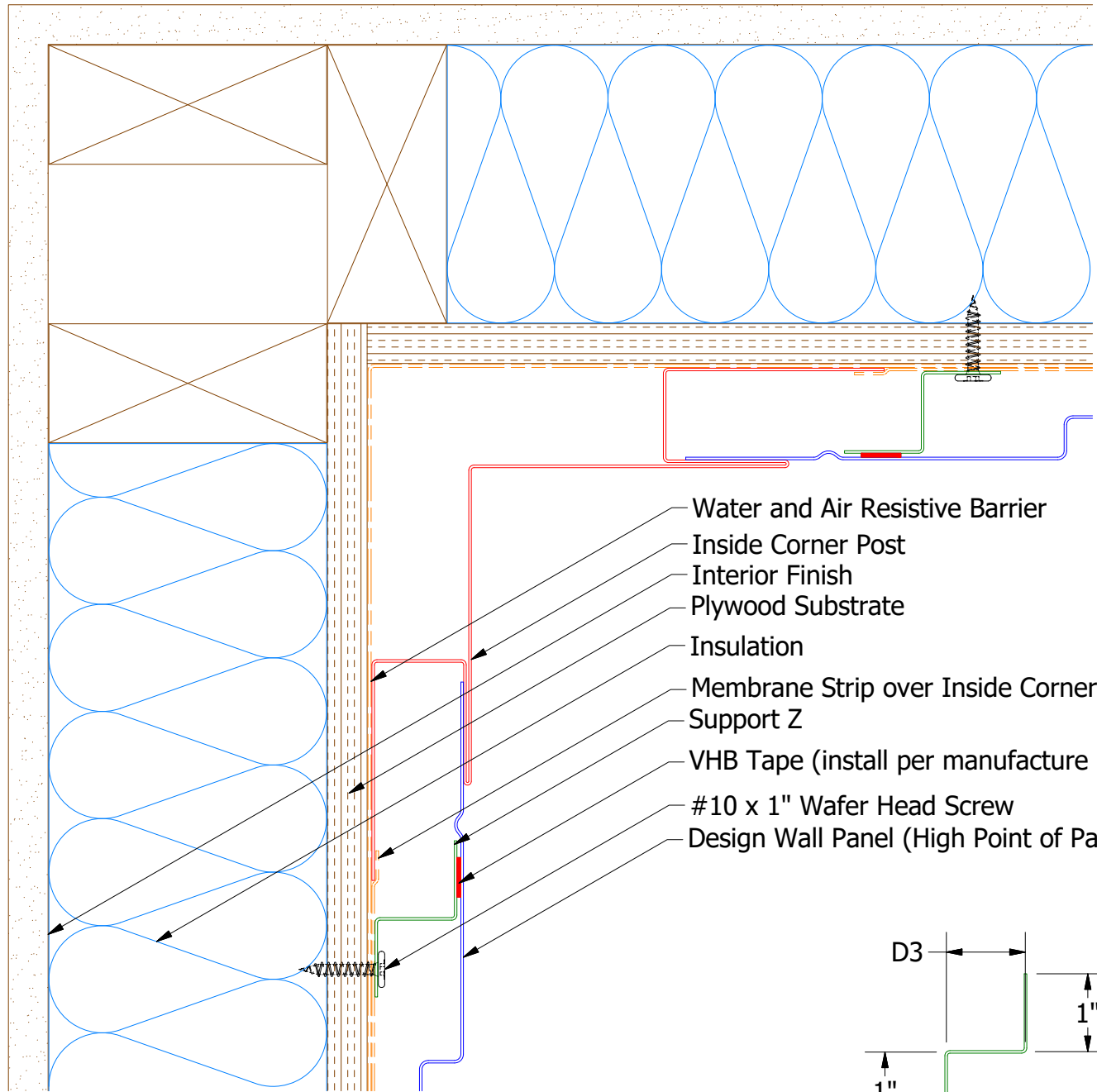
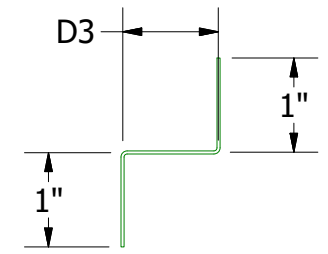


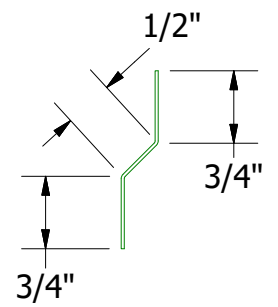
# Vertical Panel



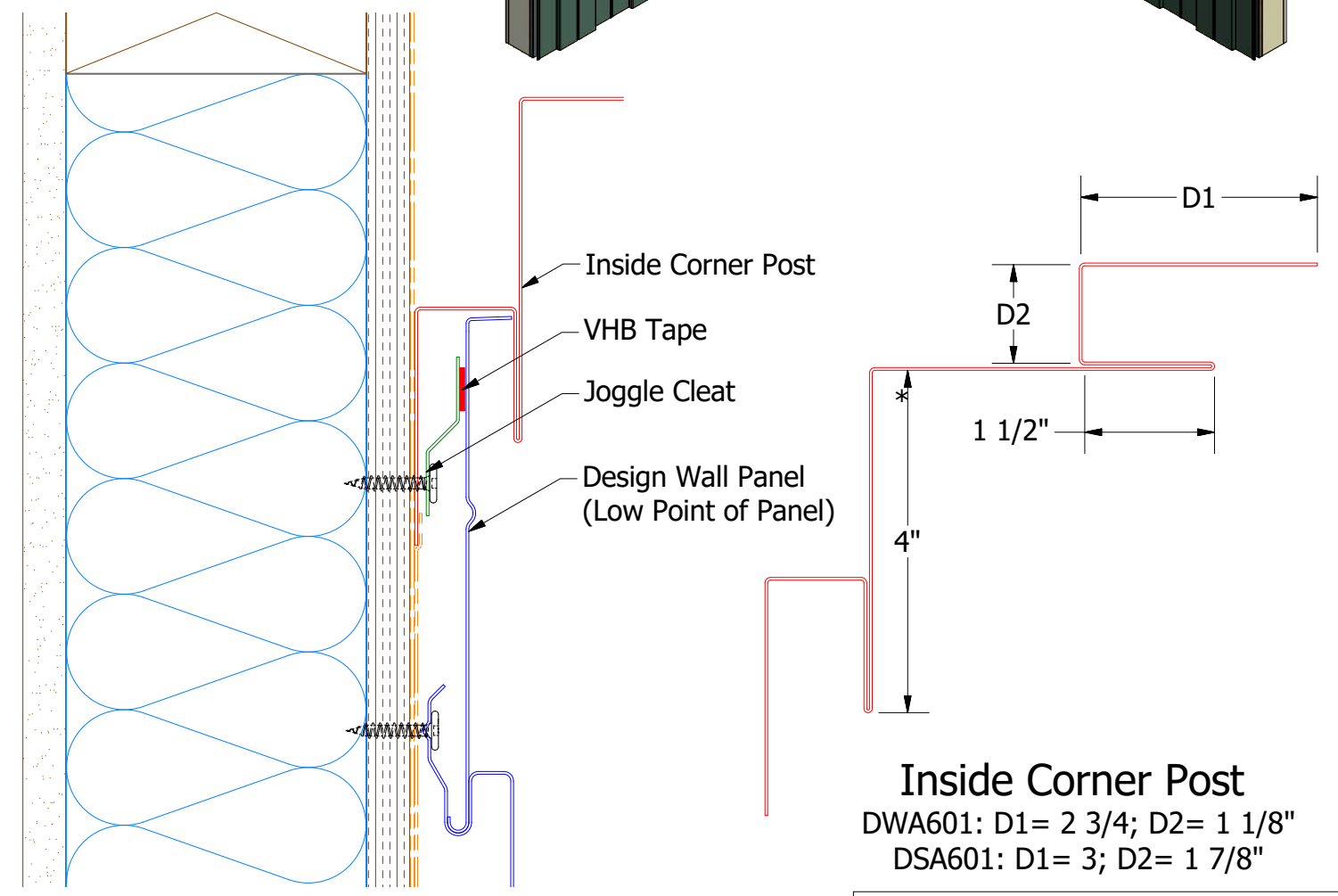
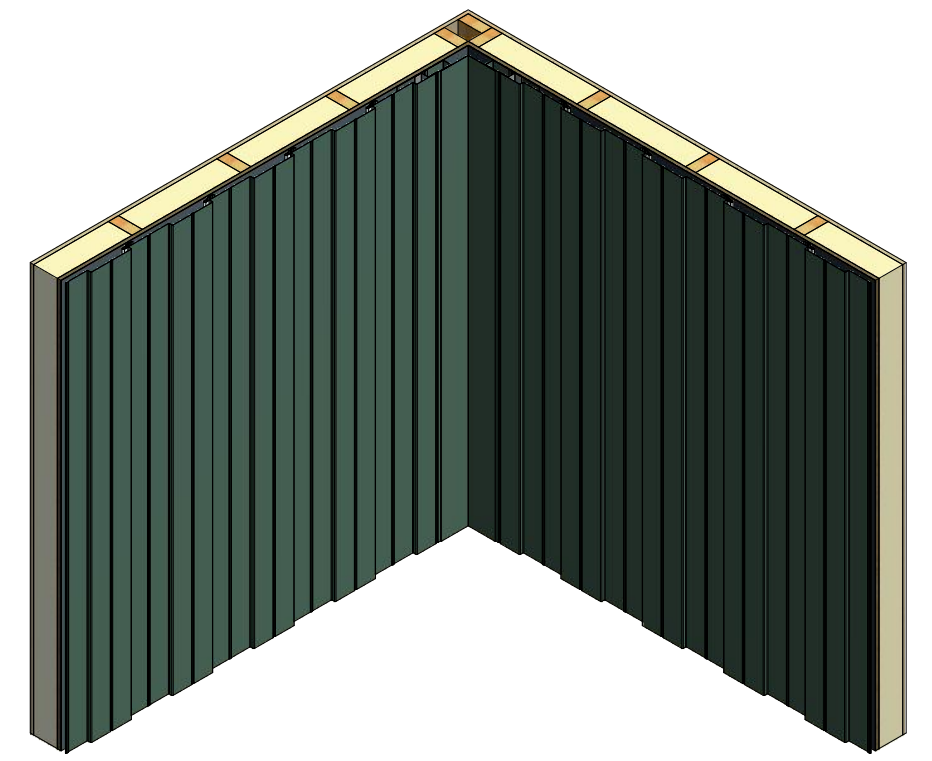
- Water and Air Resistive Barrier
- Inside Corner Post
- Interior Finish
- Plywood Substrate
- Insulation
- Membrane Strip over Inside Corner Post
- Support Z
- VHB Tape (install per manufacture recommendations)
- #10 x 1" Wafer Head Screw
- Design Wall Panel (High Point of Panel)



**Support Z**  
 DWA681: D3=1"  
 DSA681:D3=1 5/8"



**DWA975/DSA975 - Joggle Cleat**



**Inside Corner Post**  
 DWA601: D1= 2 3/4; D2= 1 1/8"  
 DSA601: D1= 3; D2= 1 7/8"

**Note:** \* denotes color side.  
**Note:** stainless steel pop rivets maybe needed along with VHB tape for longer panels.

ATAS INTERNATIONAL, INC Allentown PA 610-395-8445 Mesa AZ 480-558-7210		TITLE	
		Design Wall Inside Corner Detail	
DWG. NO.	DR	DMR	DATE
1	7/16/2021	DMR	6/27/2016
REV. NO.	DATE	DESCRIPTION OF REVISION	BY
1	7/16/2021	Changed Pop Rivets to VHB Tape	DMR
MATERIAL		APP	DAS
SH. SIZE		B	SCALE
			X:X