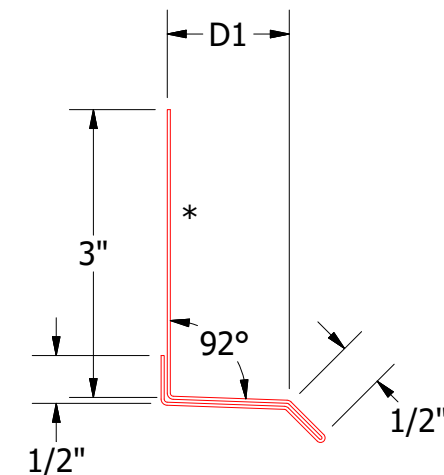
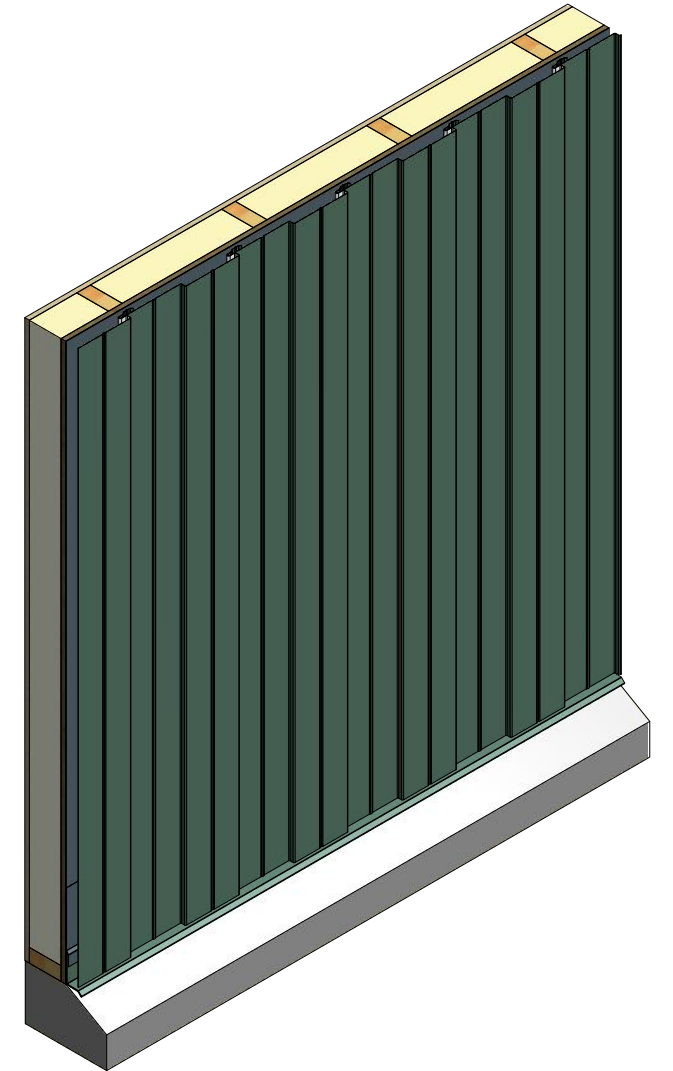
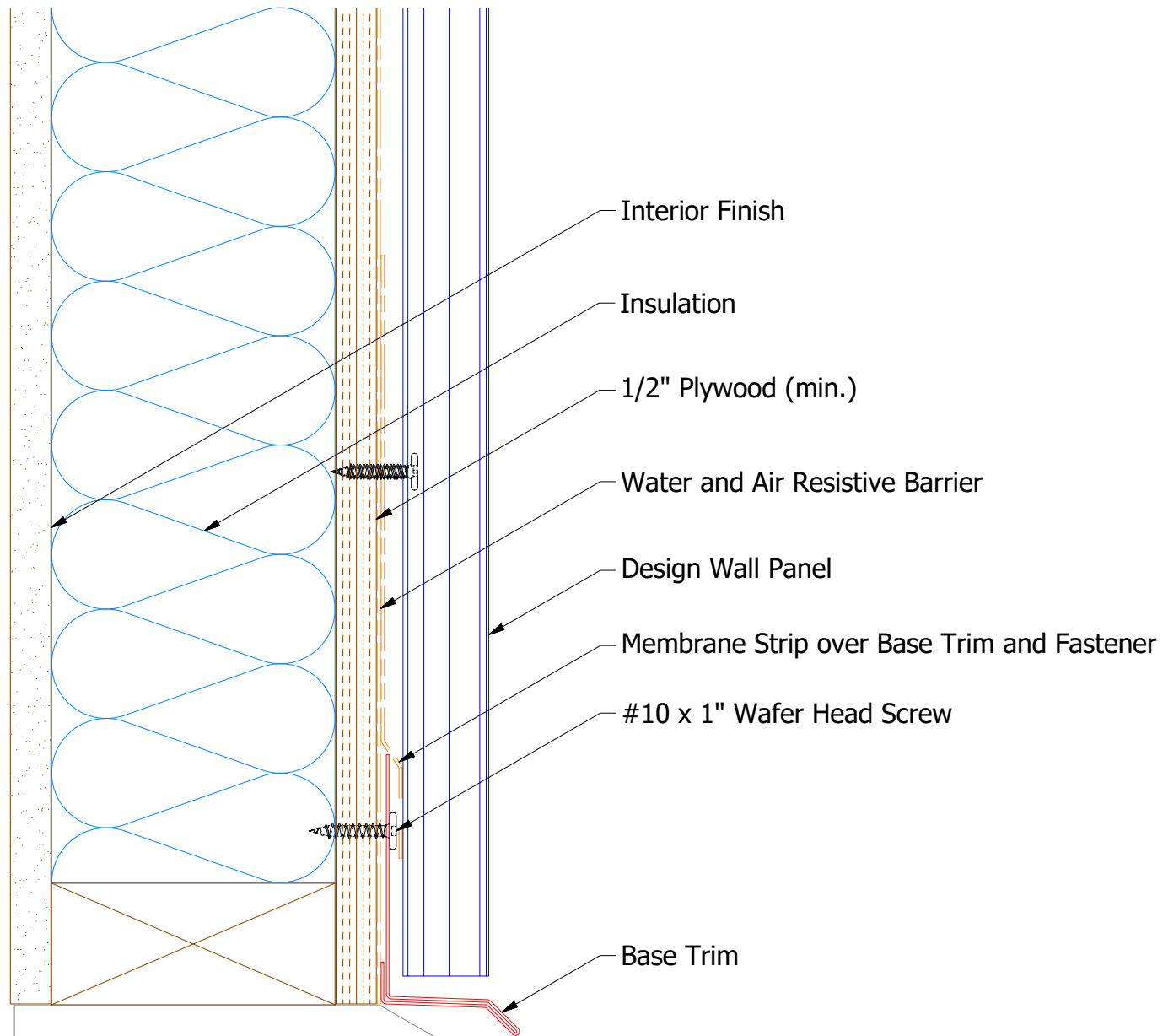
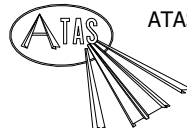


Vertical Panel



Base Trim
 DWA661: D1=1 1/4"
 DSA661: D1=2"

Note: * denotes color side.

 ATAS INTERNATIONAL, INC Allentown PA 610-395-8445 Mesa AZ 480-558-7210		TITLE	
		Design Wall Base Detail	
DWG. NO.	DR	DATE	
	DMR	6/23/2016	
REV. NO.	APP	DATE	
1	DAS	7/25/16	
	SH. SIZE	SCALE	
	B	X:X	

REV. NO.	DATE	DESCRIPTION OF REVISION	BY	APP
1	7/13/2021	Changed Pop Rivets to VHB Tape	DMR	