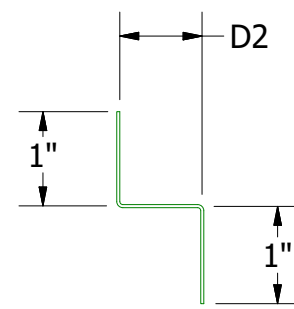
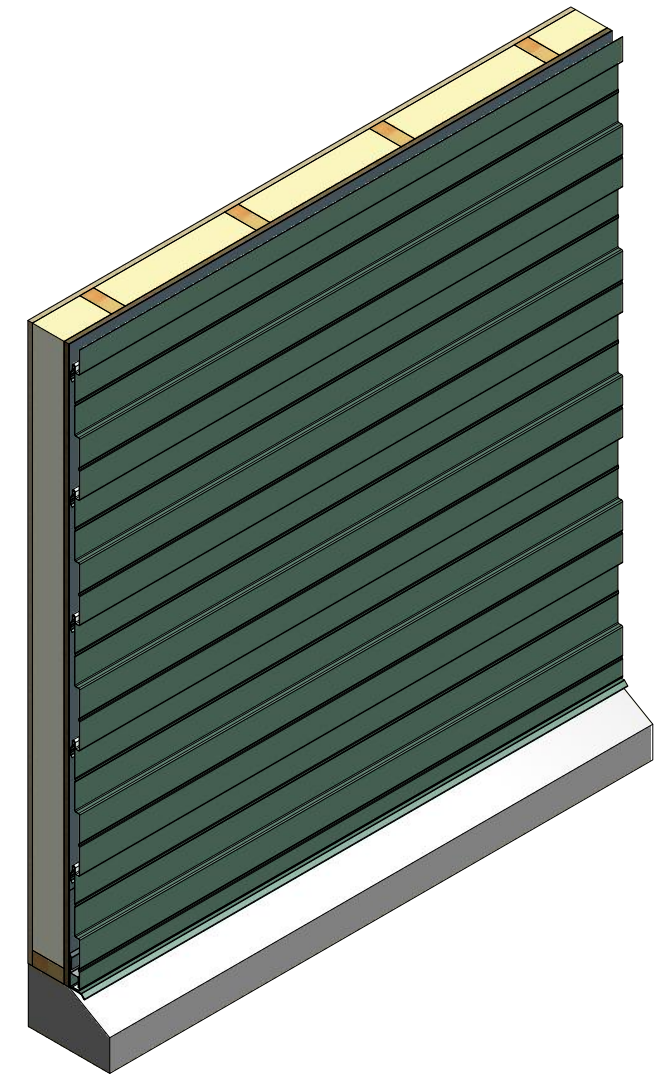
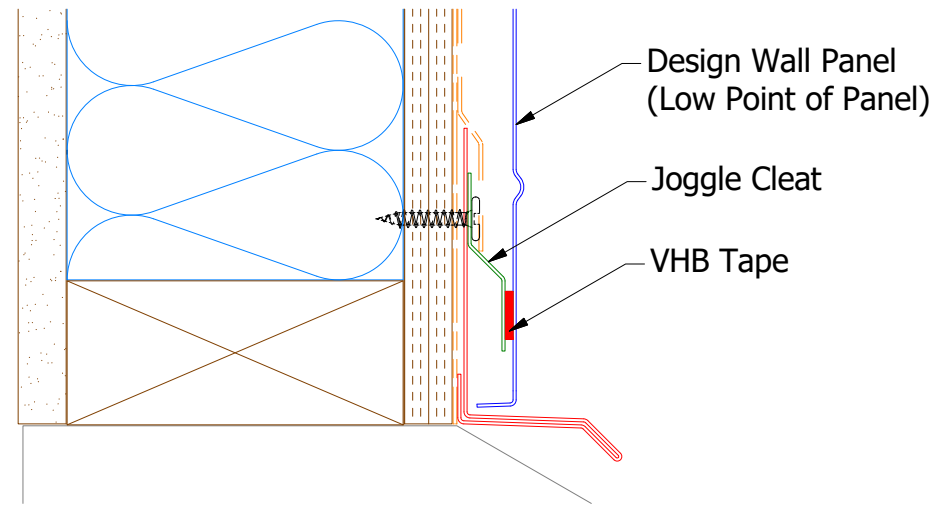
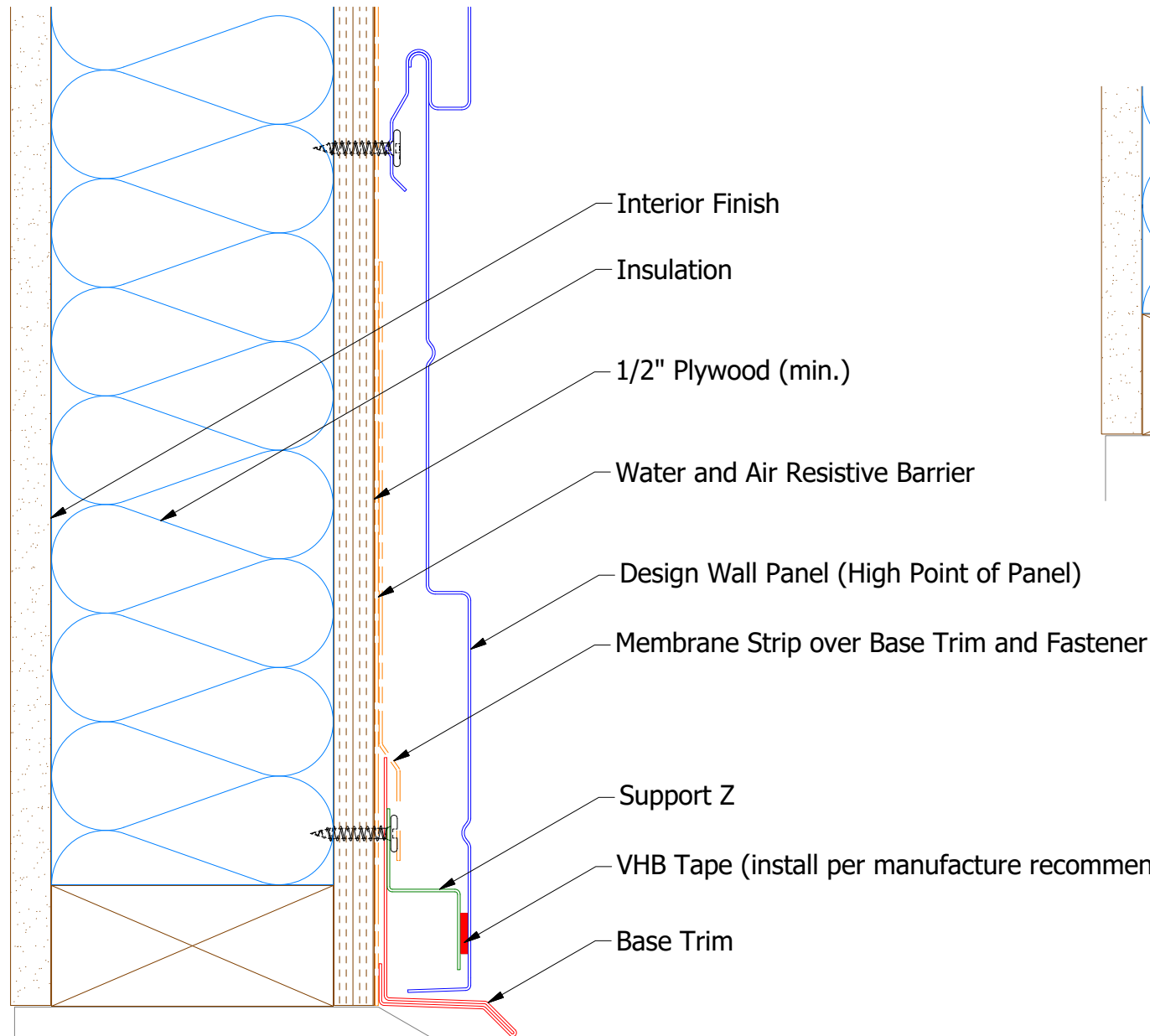
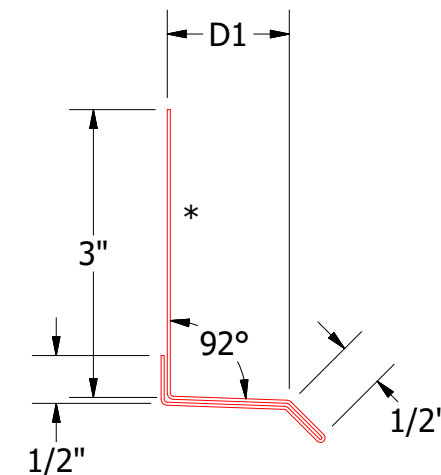


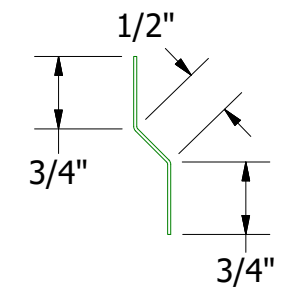
Horizontal Panel



Support Z
 DWA681: D2=1"
 DSA681: D2=1 5/8"




Base Trim
 DWA661: D1=1 1/4"
 DSA661: D1=2"



DWA975/DSA975 - Joggle Cleat

Note: * denotes color side.
Note: stainless steel pop rivets may be needed along with VHB tape for longer panels.

 ATAS INTERNATIONAL, INC Allentown PA 610-395-8445 Mesa AZ 480-558-7210		TITLE	
		Design Wall Base Detail	
DWG. NO.	DR	DATE	
	DMR	6/23/2016	
1	APP	DATE	
7/13/2021	DAS	7/25/16	
REV. NO.	DATE	DESCRIPTION OF REVISION	BY APP
1	7/13/2021	Changed Pop Rivets to VHB Tape	DMR
MATERIAL		SH. SIZE	SCALE
		B	X:X