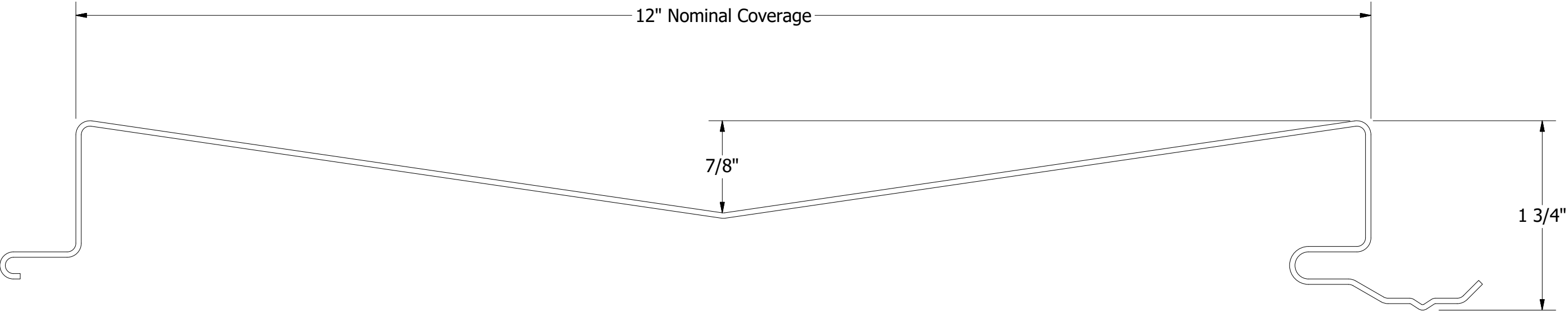


DSF & DSH Design Wall Panels

					Design Wall Panel Profile Detail							
					DWG. NO.			DR	KRK	DATE	7/26/2016	
								APP	DAS	DATE	7/26/2016	
REV. NO.	DATE	DESCRIPTION OF REVISION		BY	APP	MATERIAL			SH. SIZE	B	SCALE	X:X





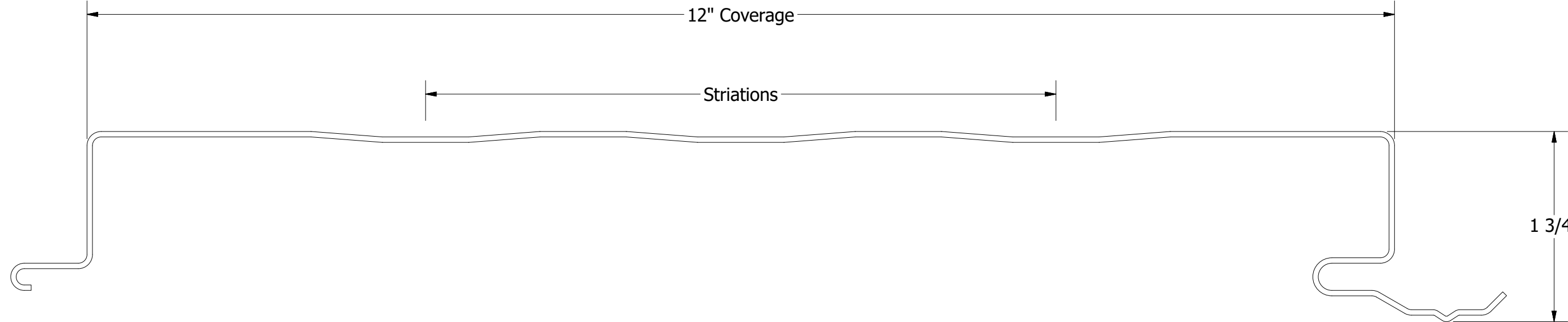
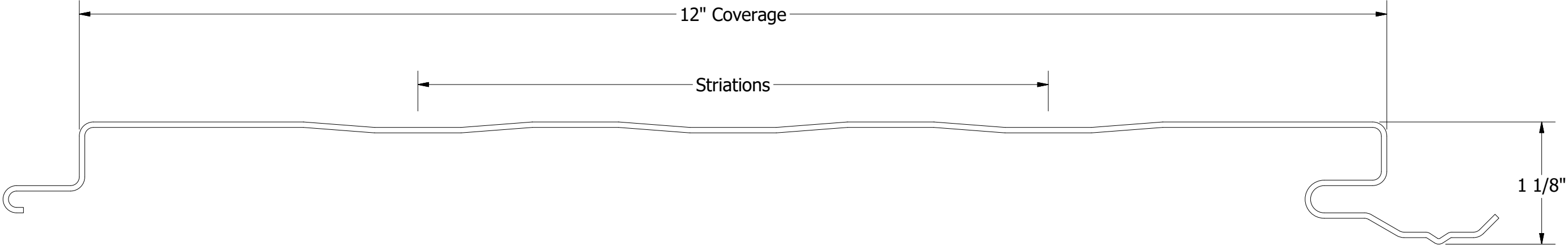
DSV120 - Design Wall Panel

Minimum Length: 3'-0"  
Maximum Length: 26'-0"

					TITLE			
					Design Wall Panel Profile Detail			
					DWG. NO.		DR KRK	DATE 7/26/2016
							APP DAS	DATE 7/26/2016
REV. NO.	DATE	DESCRIPTION OF REVISION	BY	APP	MATERIAL		SH. SIZE B	SCALE X:X



ATAS INTERNATIONAL, INC  
Allentown PA  
610-395-8445  
Mesa AZ  
480-558-7210

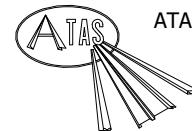
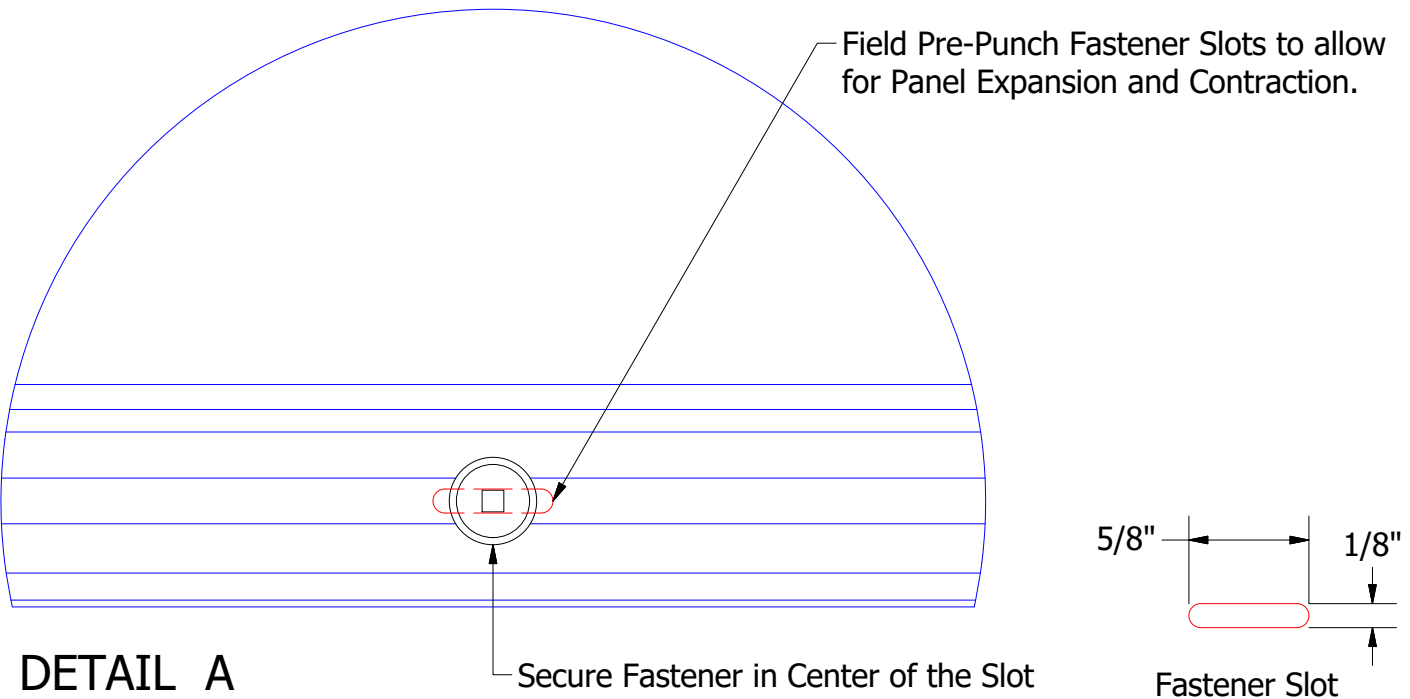
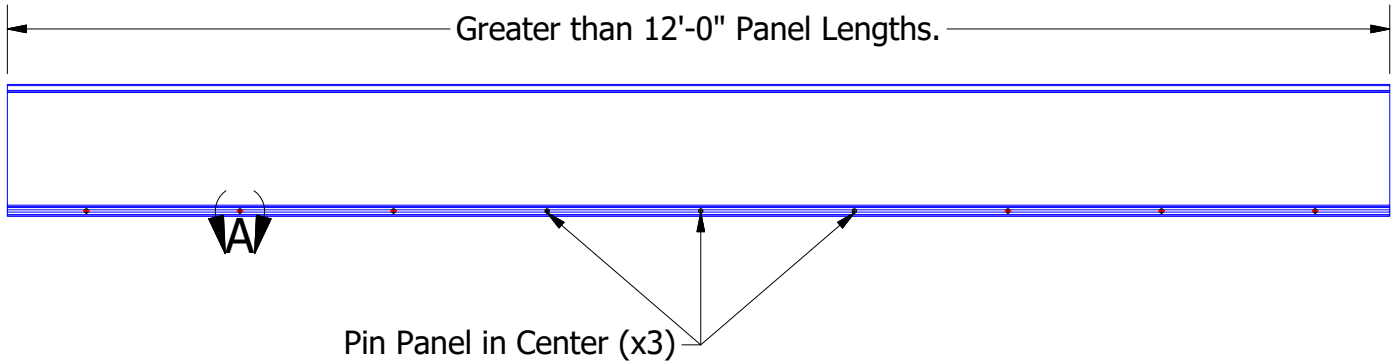


Minimum Length: 6'-0"  
Maximum Length: 26'-0"

						TITLE		
						Design Wall Panel Profile Detail		
						DWG. NO.	DR KRK	DATE 7/26/2016
							APP DAS	DATE 7/26/2016
REV. NO.	DATE	DESCRIPTION OF REVISION	BY	APP		MATERIAL	SH. SIZE B	SCALE X:X



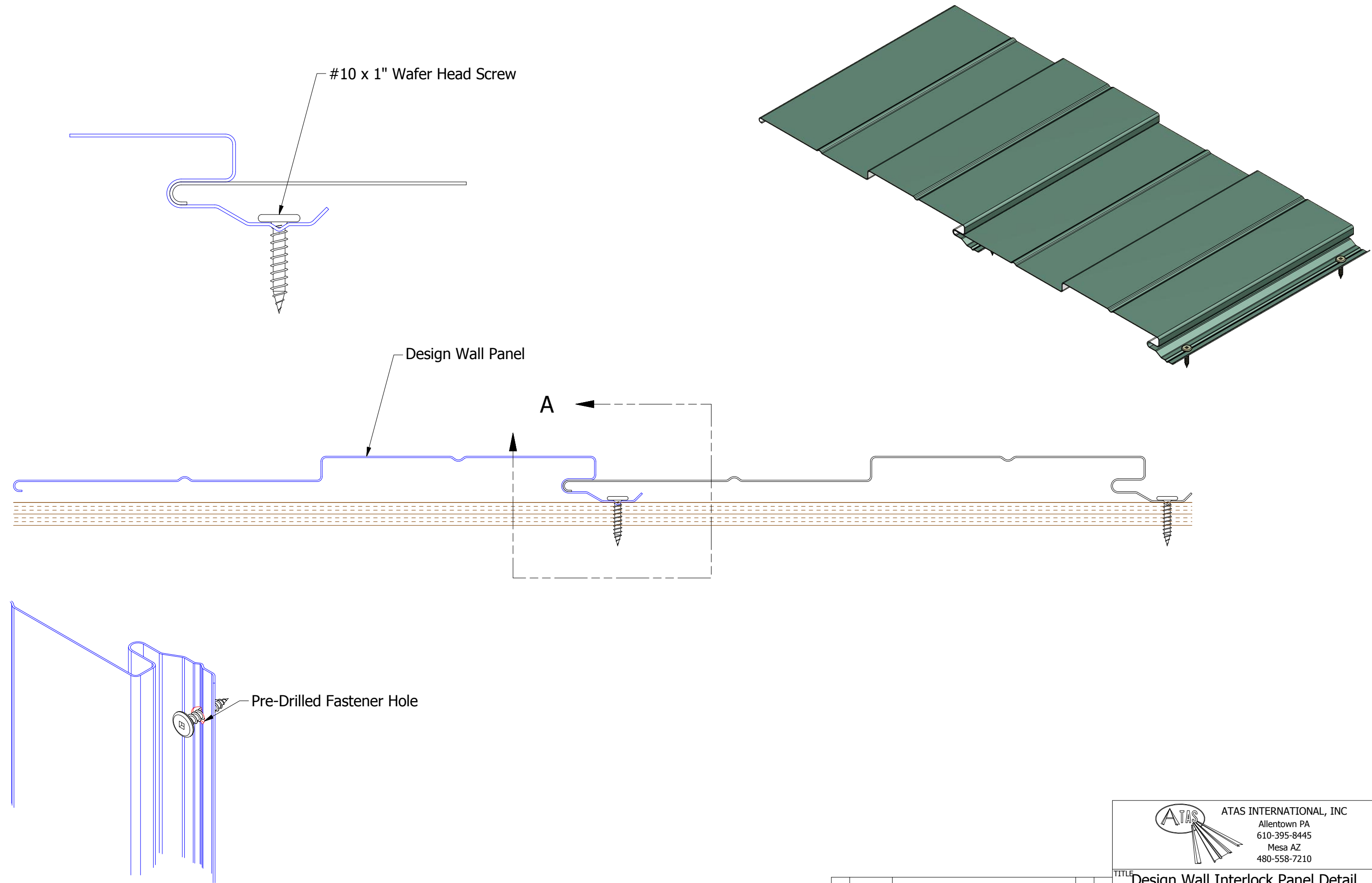
ATAS INTERNATIONAL, INC  
Allentown PA  
610-395-8445  
Mesa AZ  
480-558-7210



ATAS INTERNATIONAL, INC  
 Allentown PA  
 610-395-8445  
 Mesa AZ  
 480-558-7210

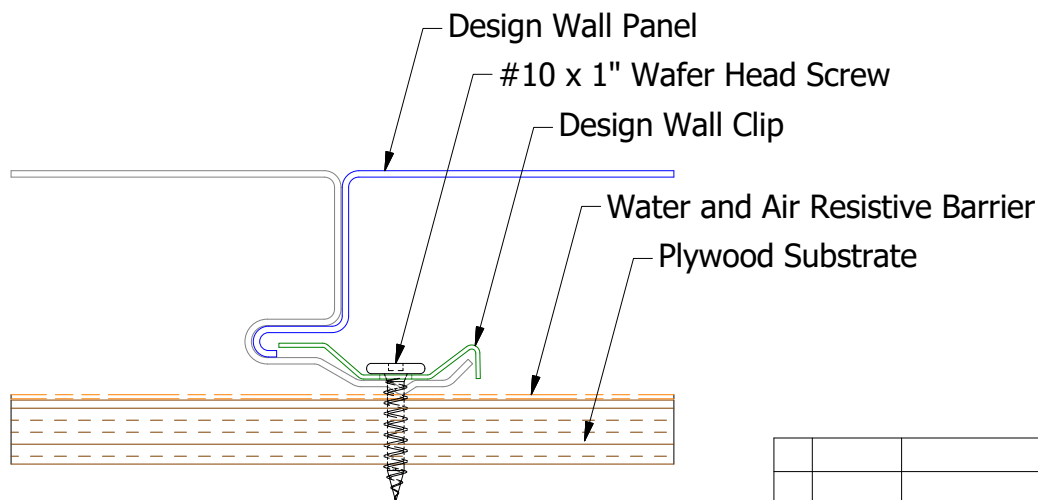
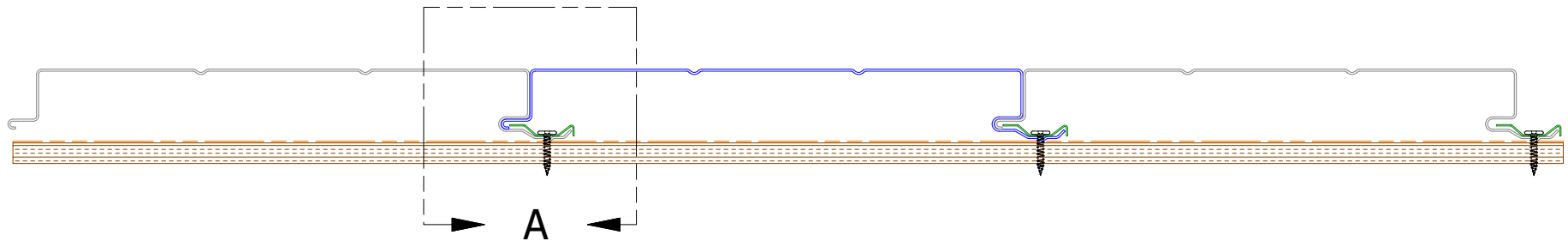
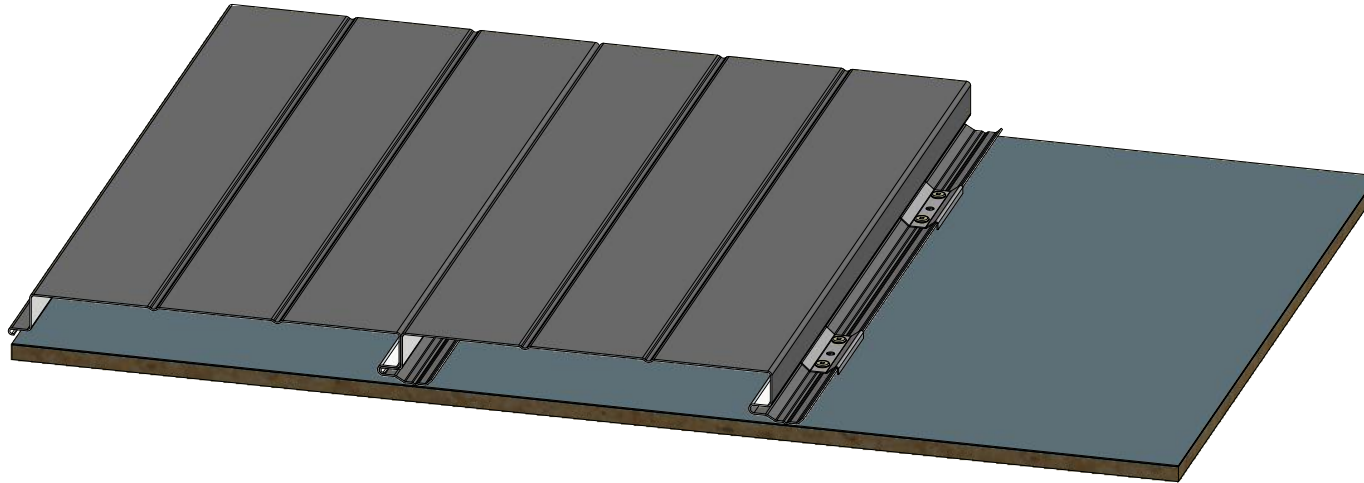
TITLE Design Wall Fastener Slots Detail		
DWG. NO.	DR DMR	DATE 5/12/2021
MATERIAL	APP	DATE
SH. SIZE A	SCALE X:X	

REV. NO.	DATE	DESCRIPTION OF REVISION	BY	APP

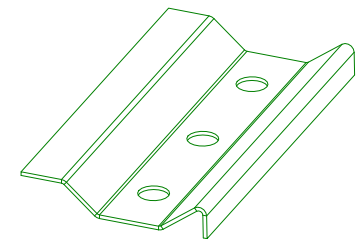


Pre-Drill Fastener Holes for Panels Greater than 20'-0" in Length.

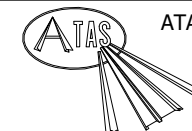
								Design Wall Interlock Panel Detail	
						DWG. NO.		DR	DATE
								DMR	10/4/2016
						MATERIAL		APP	DATE
REV. NO.	DATE	DESCRIPTION OF REVISION		BY	APP			SH. SIZE	SCALE
								B	X:X



**DETAIL A**



**Design Wall Clip**

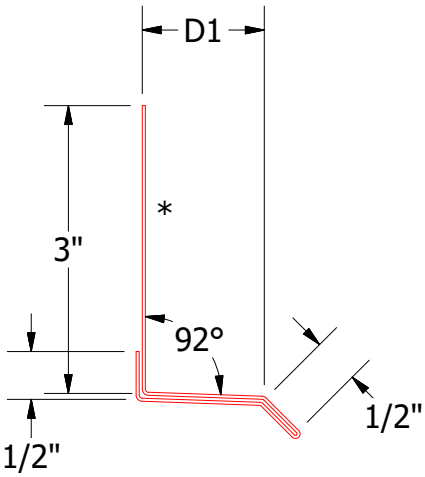
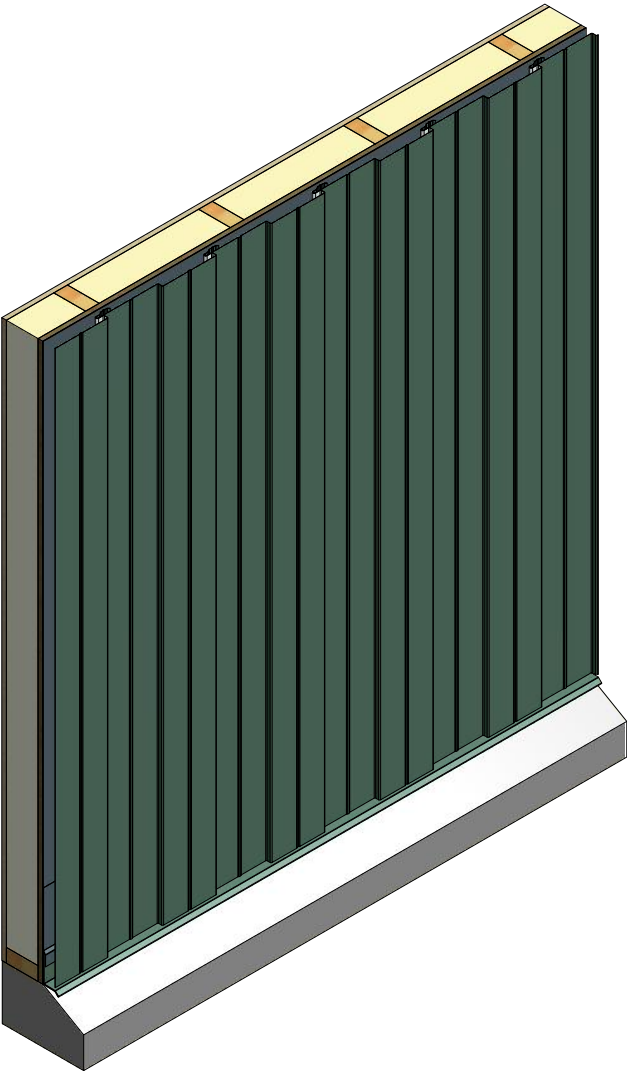
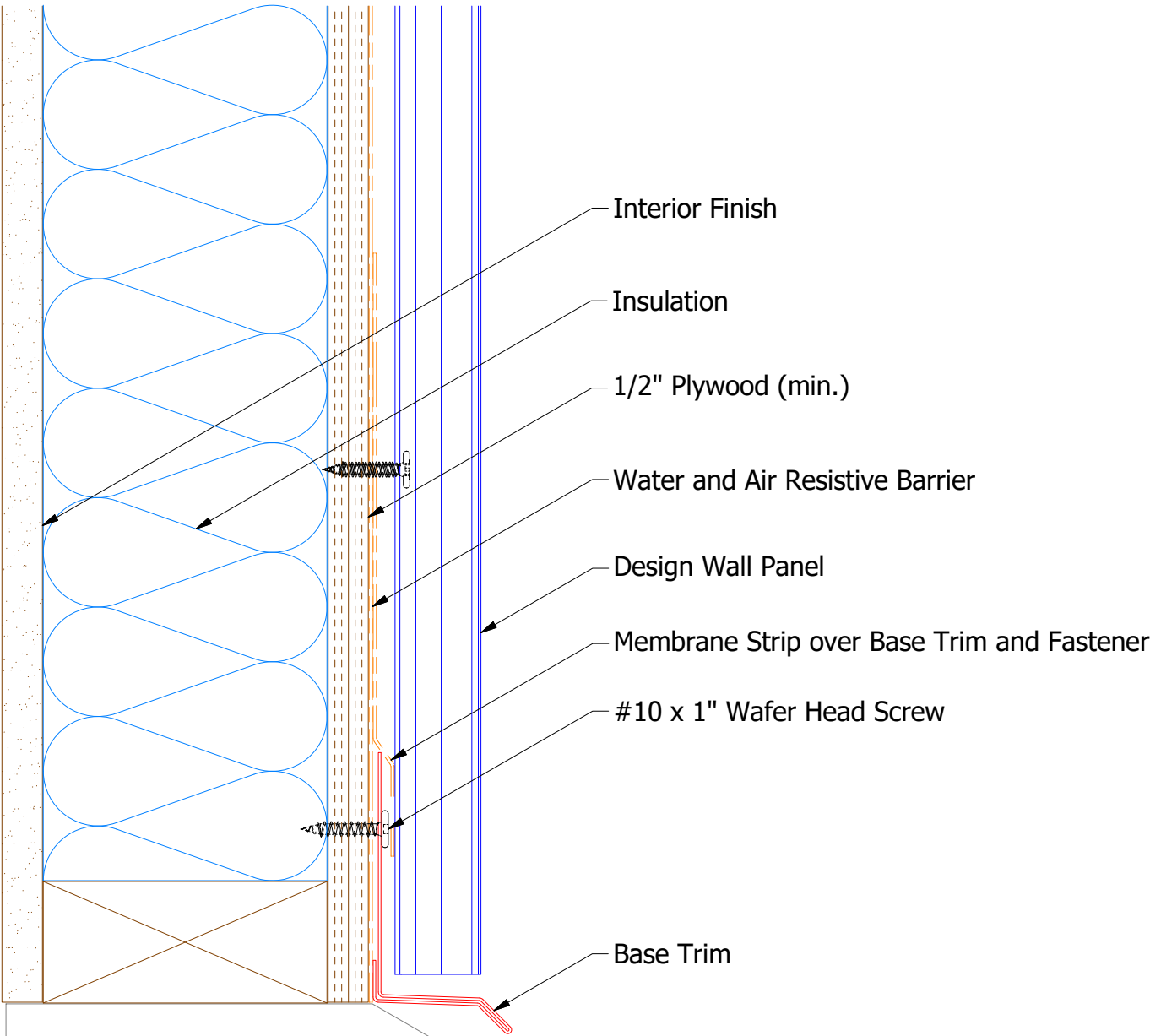


**ATAS INTERNATIONAL, INC**  
 Allentown PA  
 610-395-8445  
 Mesa AZ  
 480-558-7210

TITLE		Design Wall Clip Detail	
DWG. NO.		DR	DATE
		KRK	3/18/2021
MATERIAL		APP	DATE
		SH. SIZE	SCALE
		A	X:X

REV. NO.	DATE	DESCRIPTION OF REVISION	BY	APP

Vertical Panel



Base Trim  
DWA661: D1=1 1/4"  
DSA661: D1=2"

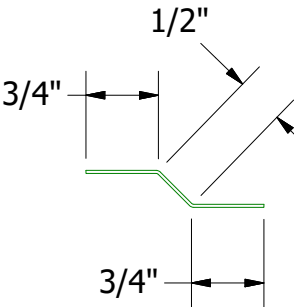
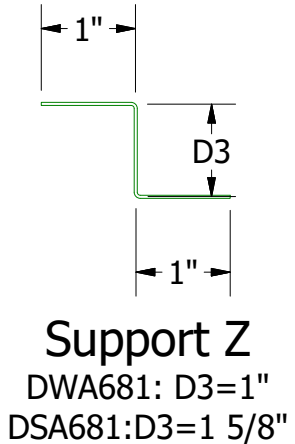
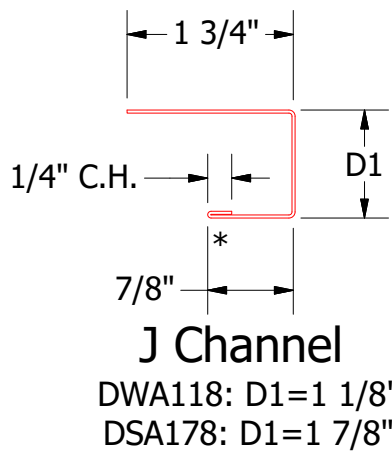
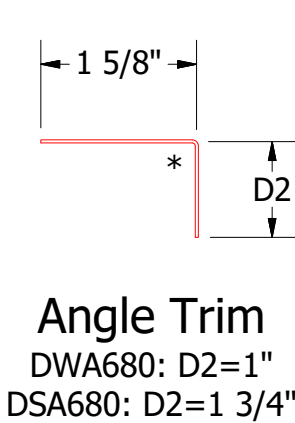
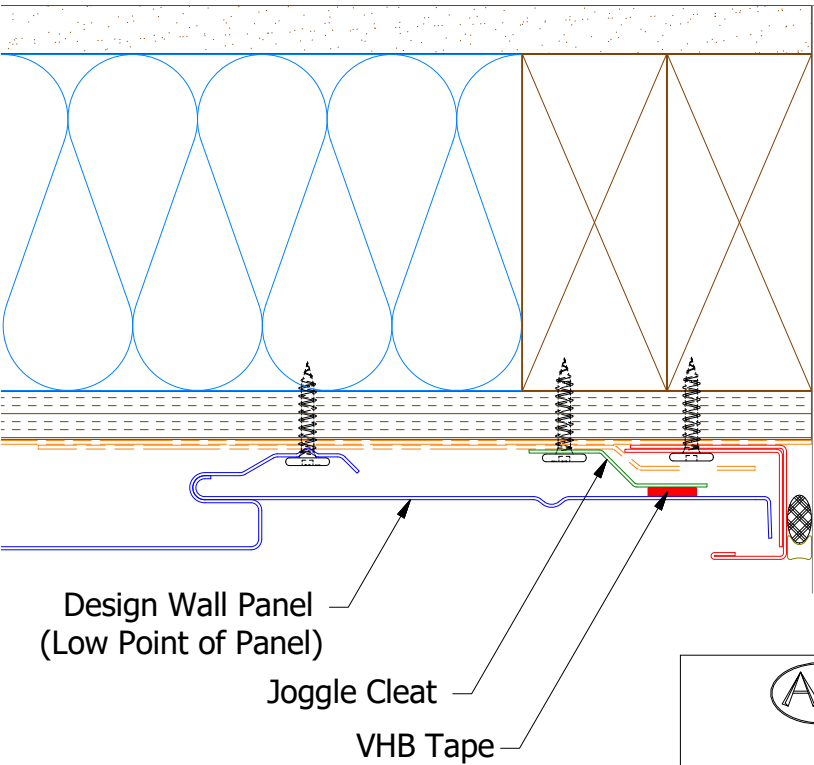
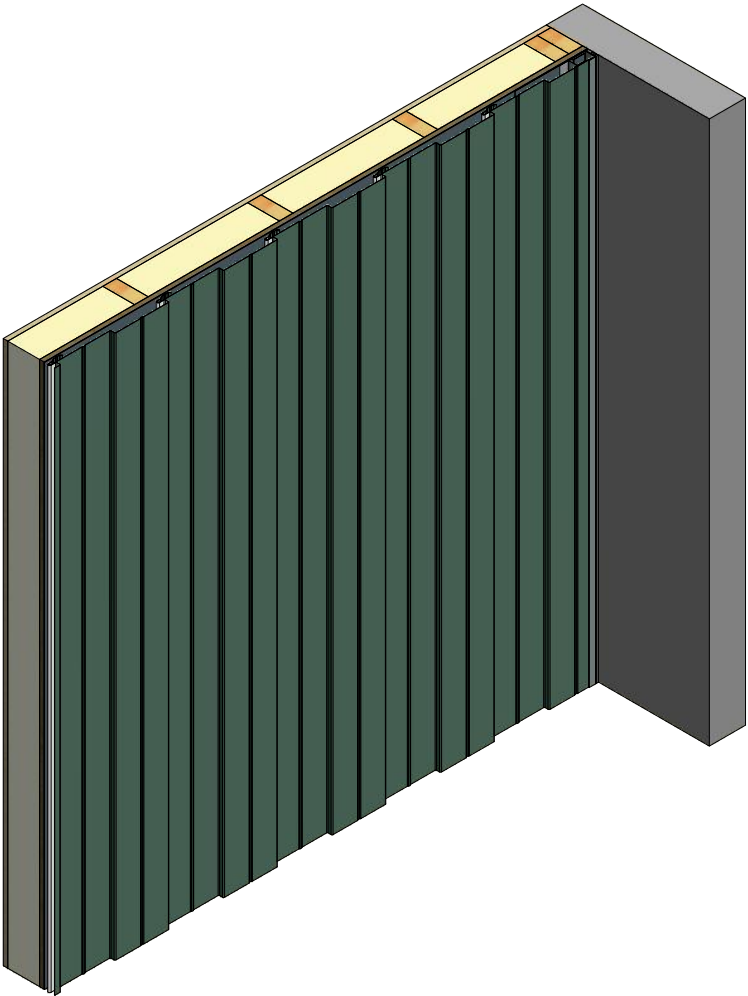
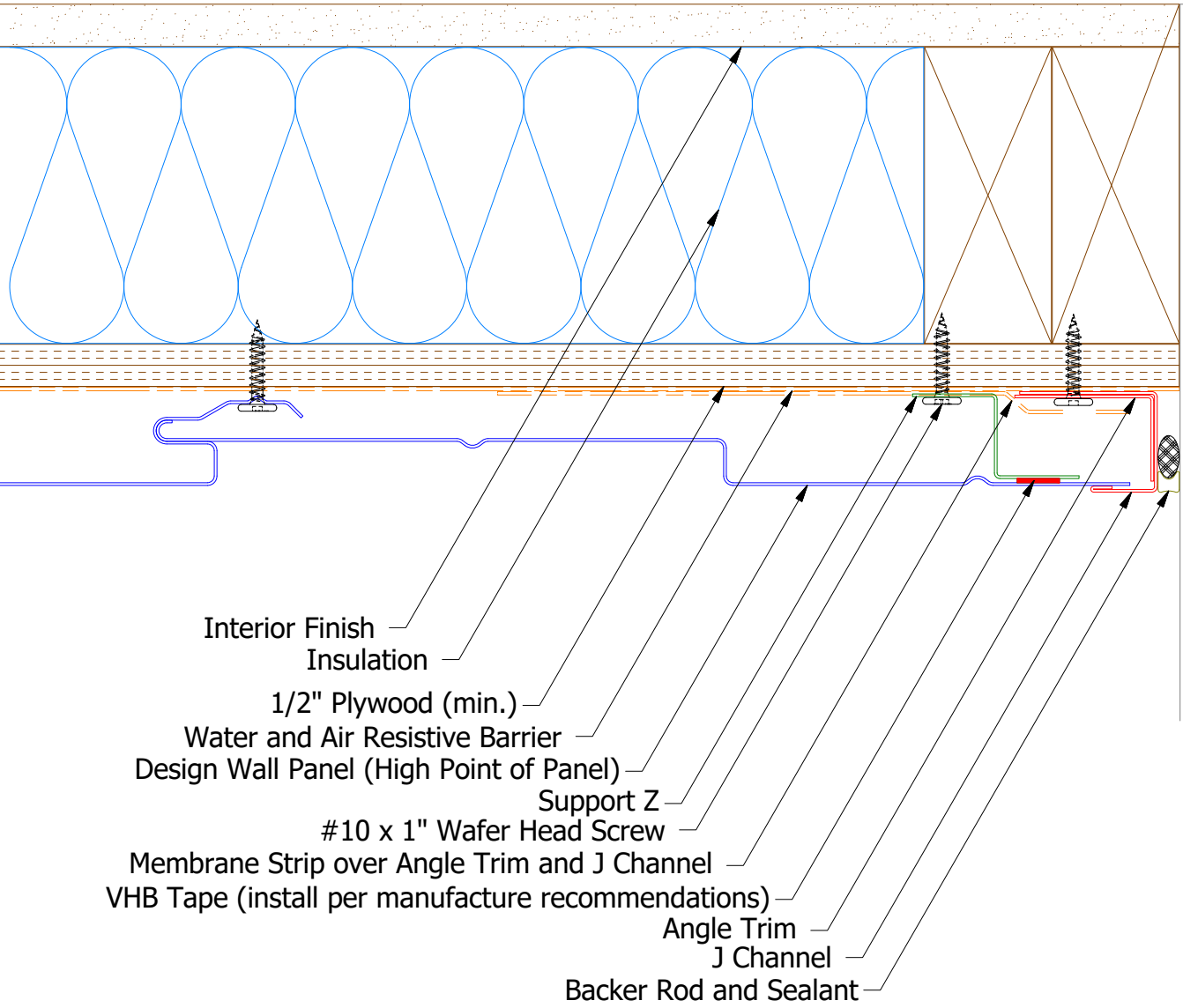
**Note:** \* denotes color side.

						TITLE		Design Wall Base Detail	
						DWG. NO.		DR	DATE
1	7/13/2021	Changed Pop Rivets to VHB Tape		DMR		MATERIAL		DMR	6/23/2016
REV. NO.	DATE	DESCRIPTION OF REVISION		BY	APP			APP	DATE
								DAS	7/25/16
								SH. SIZE	SCALE
								B	X:X

ATAS INTERNATIONAL, INC  
Allentown PA  
610-395-8445  
Mesa AZ  
480-558-7210



Vertical Panel



**Note:** \* denotes color side.  
**Note:** stainless steel pop rivets maybe needed along with VHB tape for longer panels.

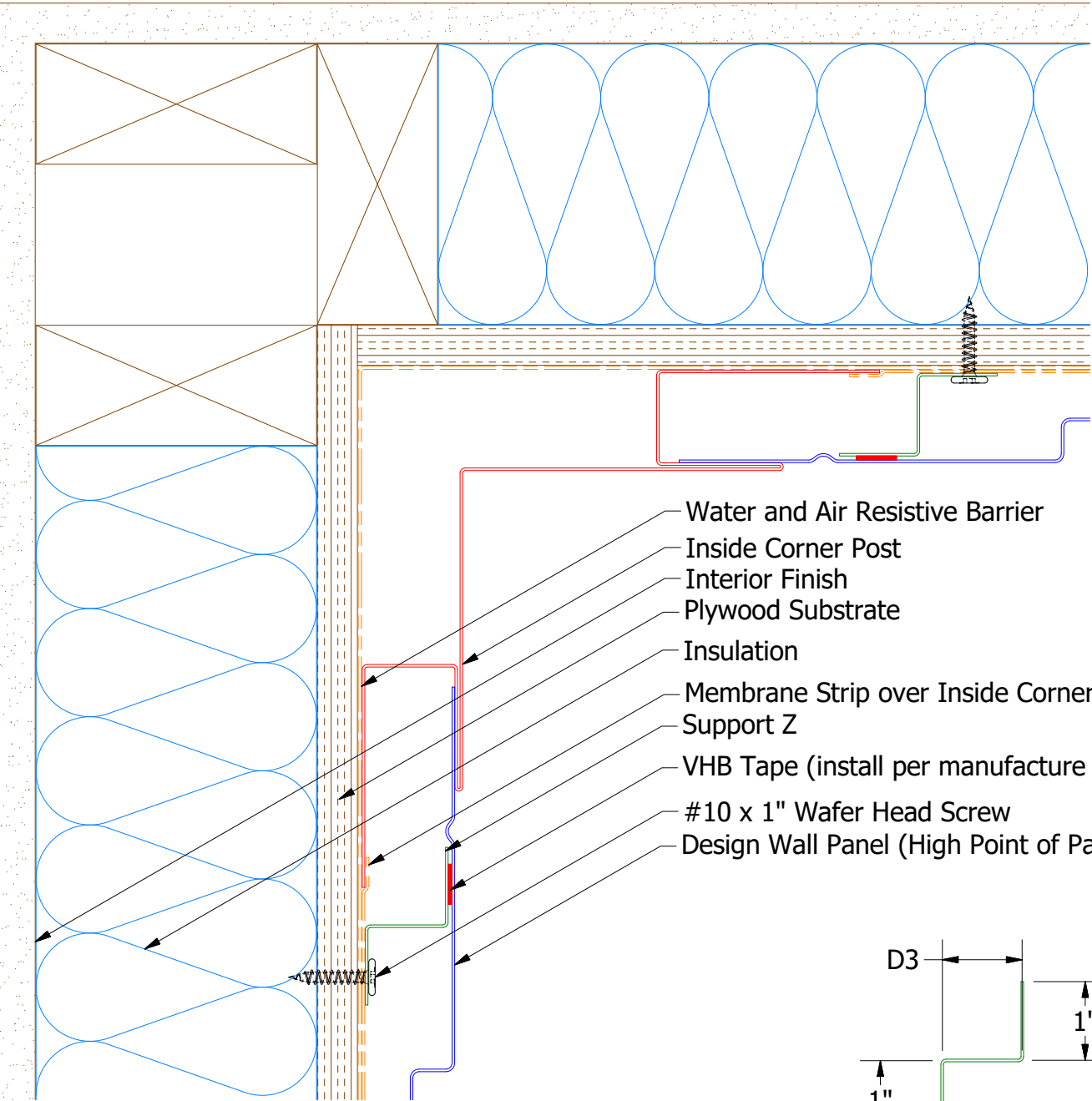
DSA975/DWA975 - Joggle Cleat

TITLE				Design Wall Endwall Detail			
DWG. NO.				DR	DMR	DATE	
1				APP	DAS	DATE	
REV. NO.				DATE	DESCRIPTION OF REVISION	BY	APP
1				7/13/2021	Changed Pop Rivets to VHB Tape	DMR	
						SH. SIZE	B
						SCALE	X:X

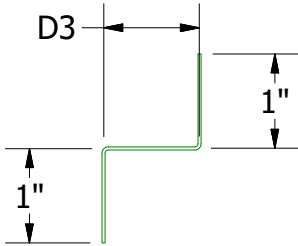


ATAS INTERNATIONAL, INC  
Allentown PA  
610-395-8445  
Mesa AZ  
480-558-7210

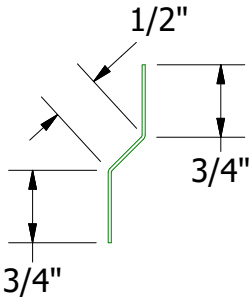
Vertical Panel



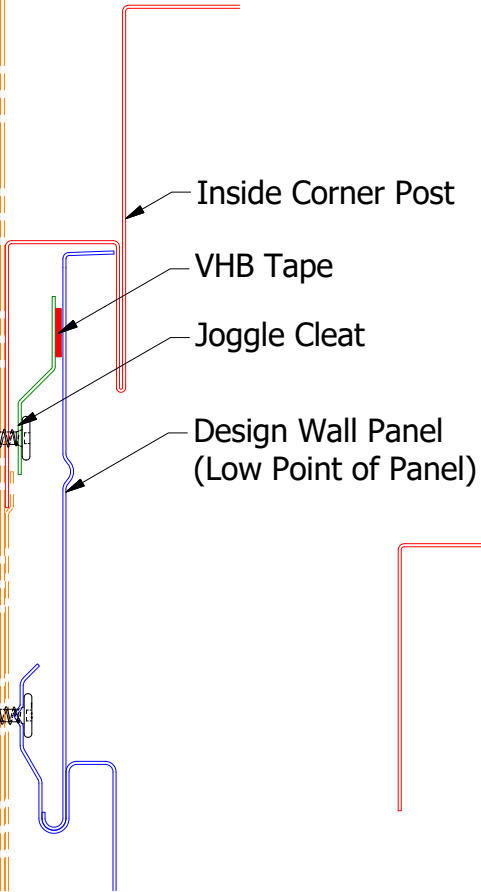
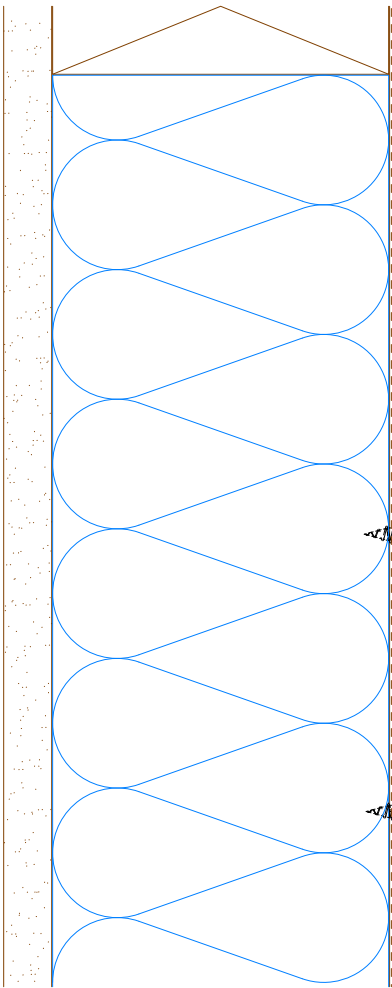
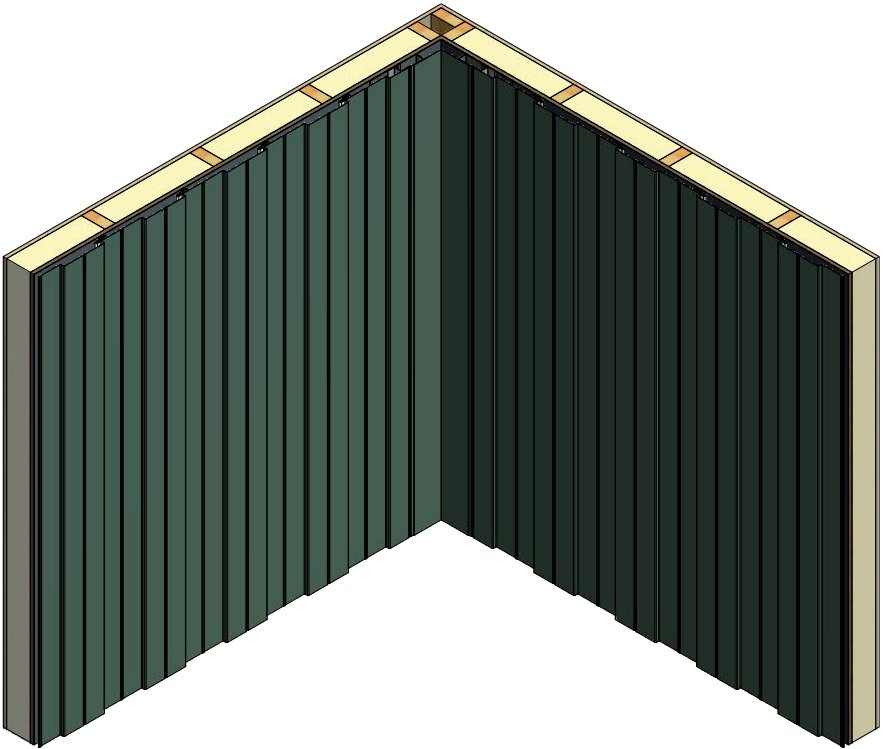
- Water and Air Resistive Barrier
- Inside Corner Post
- Interior Finish
- Plywood Substrate
- Insulation
- Membrane Strip over Inside Corner Post
- Support Z
- VHB Tape (install per manufacture recommendations)
- #10 x 1" Wafer Head Screw
- Design Wall Panel (High Point of Panel)



Support Z  
DWA681: D3=1"  
DSA681:D3=1 5/8"



DWA975/DSA975 - Joggle Cleat



Inside Corner Post  
DWA601: D1= 2 3/4; D2= 1 1/8"  
DSA601: D1= 3; D2= 1 7/8"

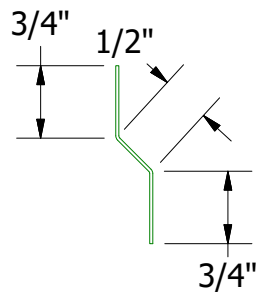
**Note:** \* denotes color side.  
**Note:** stainless steel pop rivets maybe needed along with VHB tape for longer panels.

						TITLE		Design Wall Inside Corner Detail	
								DWG. NO.	
1		7/16/2021		Changed Pop Rivets to VHB Tape		DMR		DR DMR DATE 6/27/2016	
REV. NO.		DATE		DESCRIPTION OF REVISION		BY APP		MATERIAL	
								APP DAS DATE 7/26/16	
								SH. SIZE B SCALE X:X	

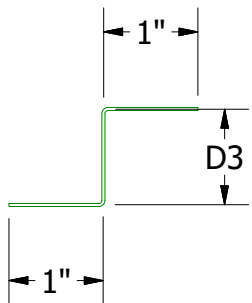


ATAS INTERNATIONAL, INC  
Allentown PA  
610-395-8445  
Mesa AZ  
480-558-7210

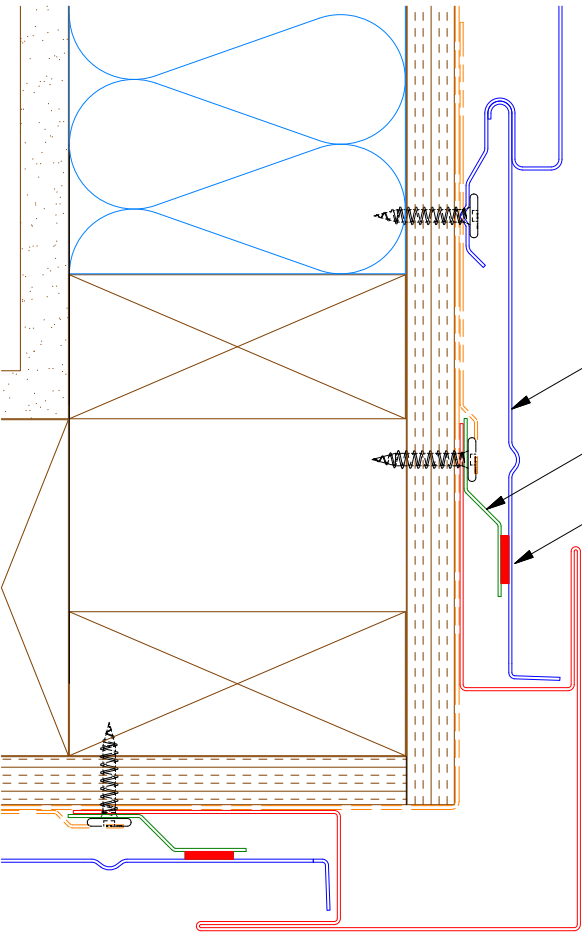
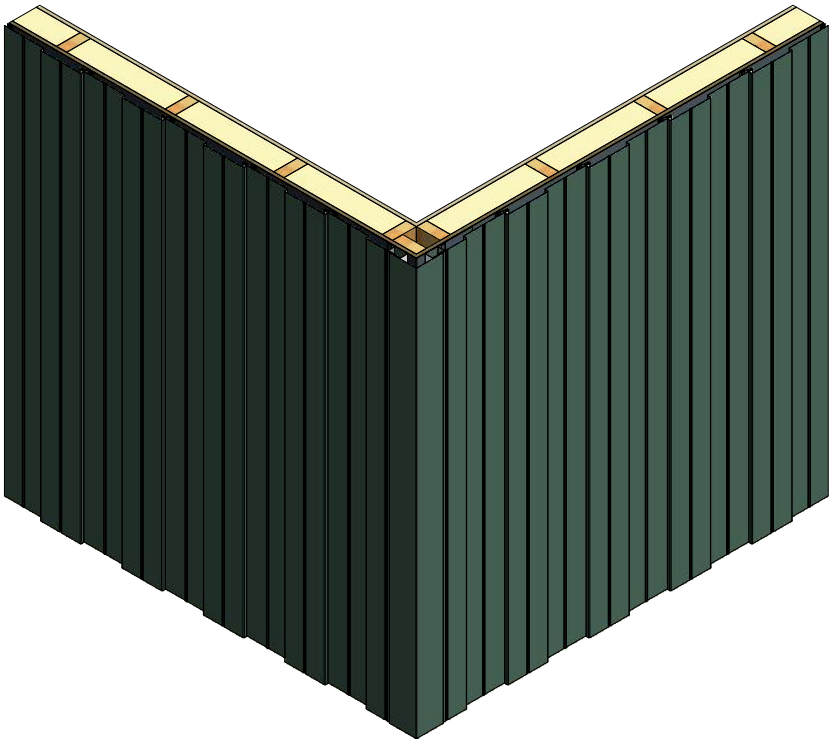
Vertical Panel



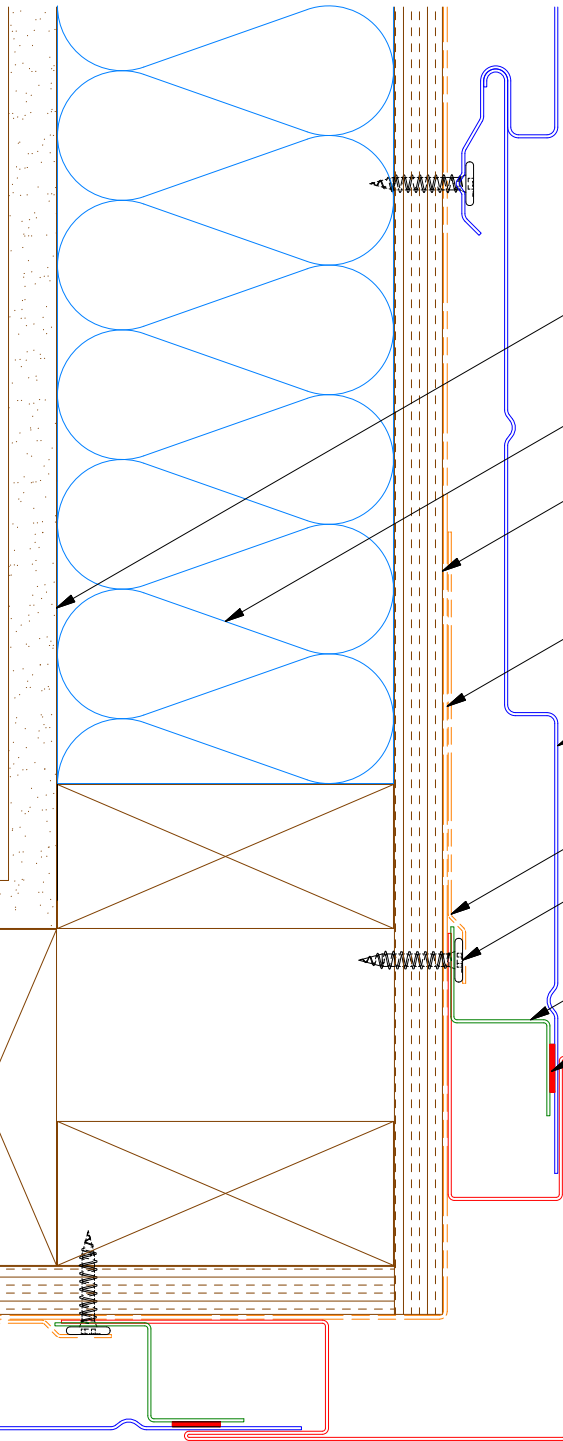
DWA975/DSA975 - Joggle Cleat



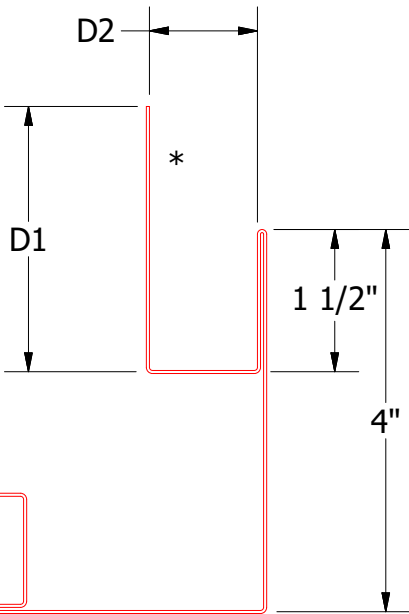
Support Z  
DWA681: D3=1"  
DSA681:D3=1 5/8"



Design Wall Panel  
(Low Point of Panel)  
Joggle Cleat  
VHB Tape



Interior Finish  
Insulation  
1/2" Plywood (min.)  
Water and Air Resistive Barrier  
Design Wall Panel (High Point of Panel)  
Membrane Strip over Outside Corner Post  
#10 x 1" Wafer Head Screw  
Support Z  
VHB Tape  
(install per manufacture recommendation)  
Outside Corner Post

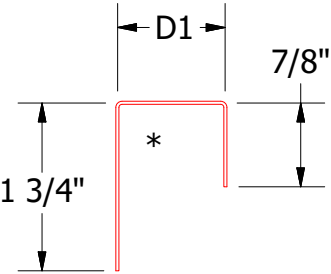
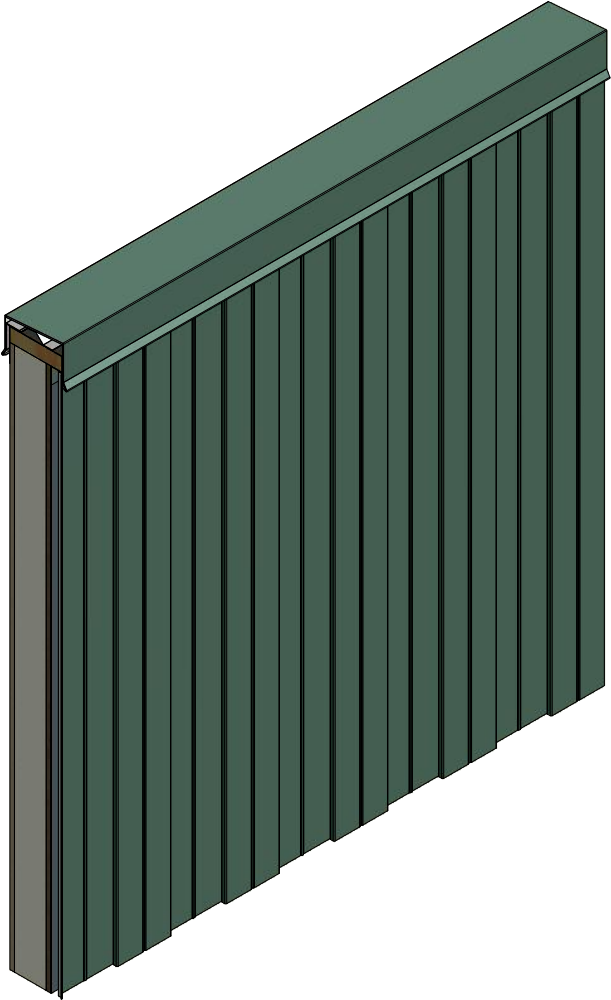
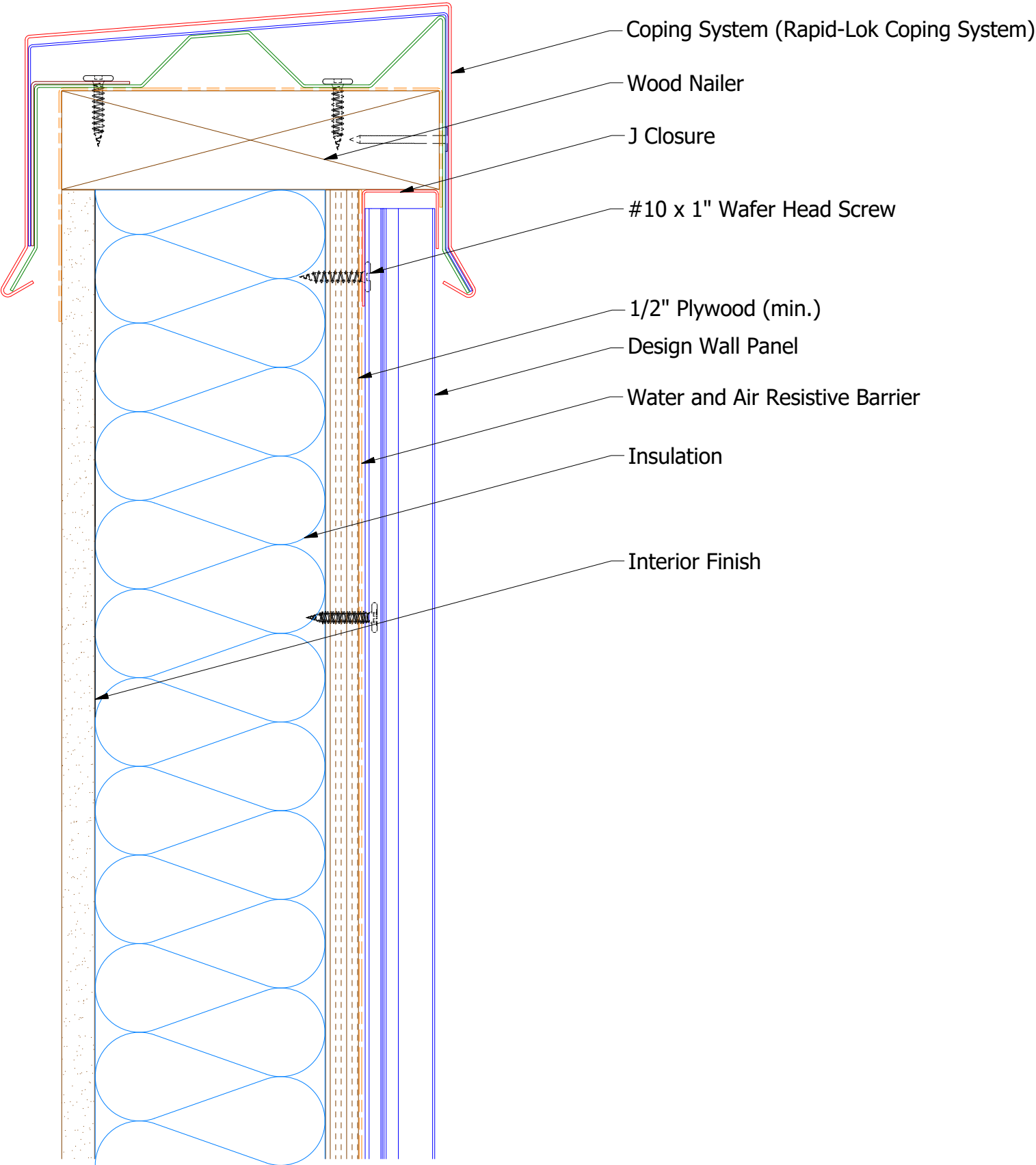


Outside Corner Post  
DWA602: D1= 2 3/4; D2= 1 1/8  
DSA602: D1= 3; D2= 1 7/8

**Note:** \* denotes color side.  
**Note:** stainless steel pop rivets maybe needed along with VHB tape for longer panels.

				Design Wall Outside Corner Detail			
				DWG. NO.		DR	DATE
						DMR	6/28/2016
01	7/19/2021	Changed Pop Rivets to VHB Tape		DMR	APP		DAS
						DATE 7/26/16	
REV. NO.	DATE	DESCRIPTION OF REVISION		BY	APP	SH. SIZE	SCALE
						B	X:X

Vertical Panel



J Closure  
DWA270: D1= 1 1/8"  
DSA270: D1= 1 7/8"

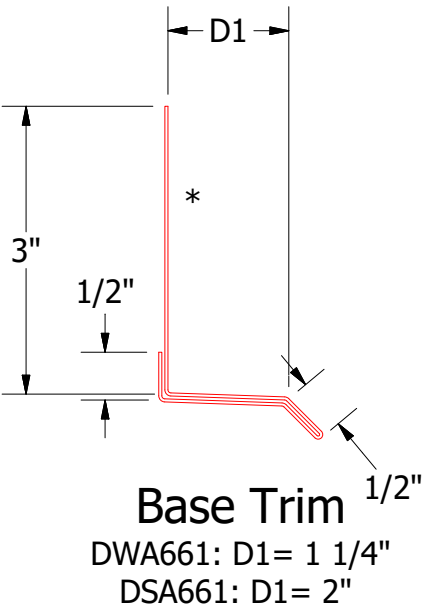
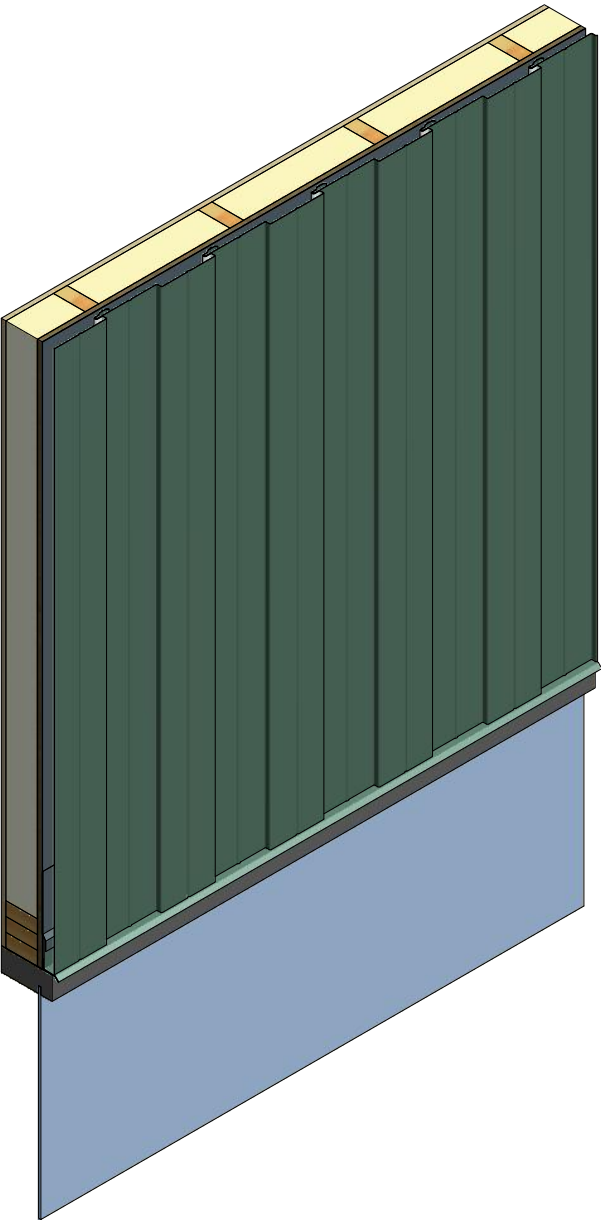
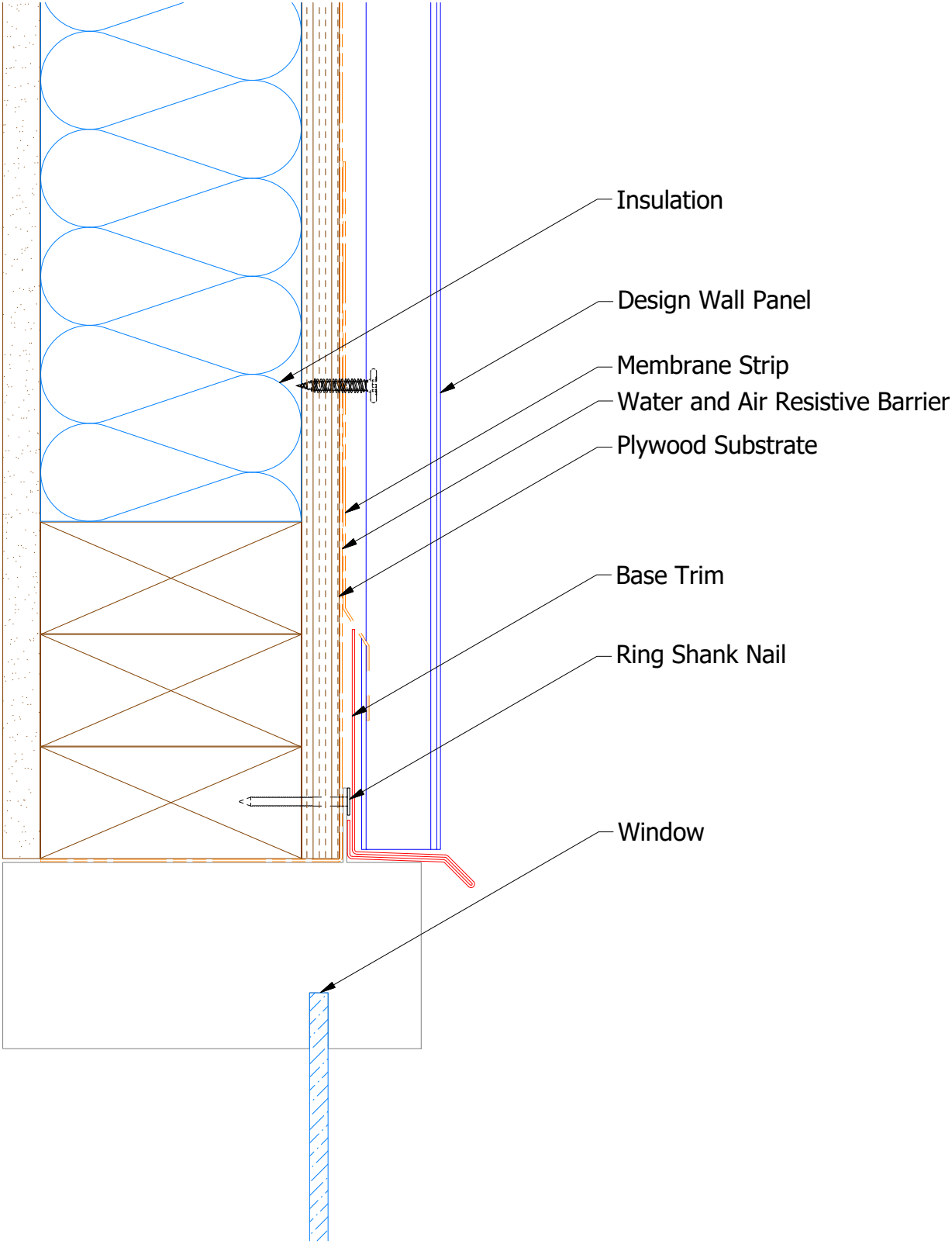
**Note:** \* denotes color side.

				TITLE		
				Design Wall Top of Wall Detail		
		DWG. NO.		DR	DMR	DATE 6/30/2016
01		7/19/2021		APP	DAS	DATE 7/26/16
REV. NO.		DATE		BY		APP
		DESCRIPTION OF REVISION		SH. SIZE		SCALE X:X
				B		



ATAS INTERNATIONAL, INC  
Allentown PA  
610-395-8445  
Mesa AZ  
480-558-7210

Vertical Panel



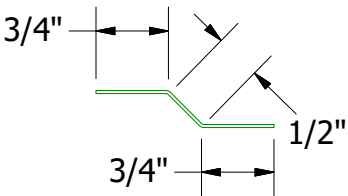
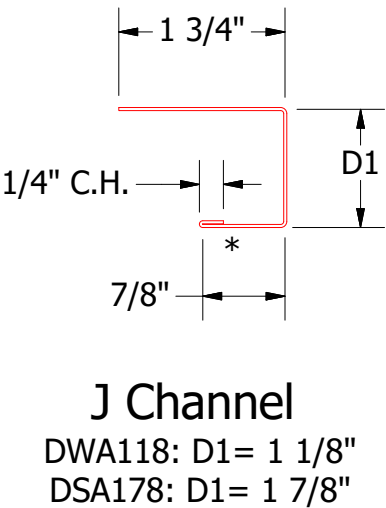
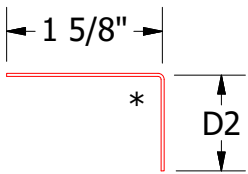
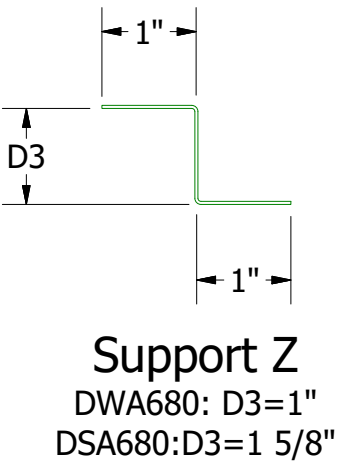
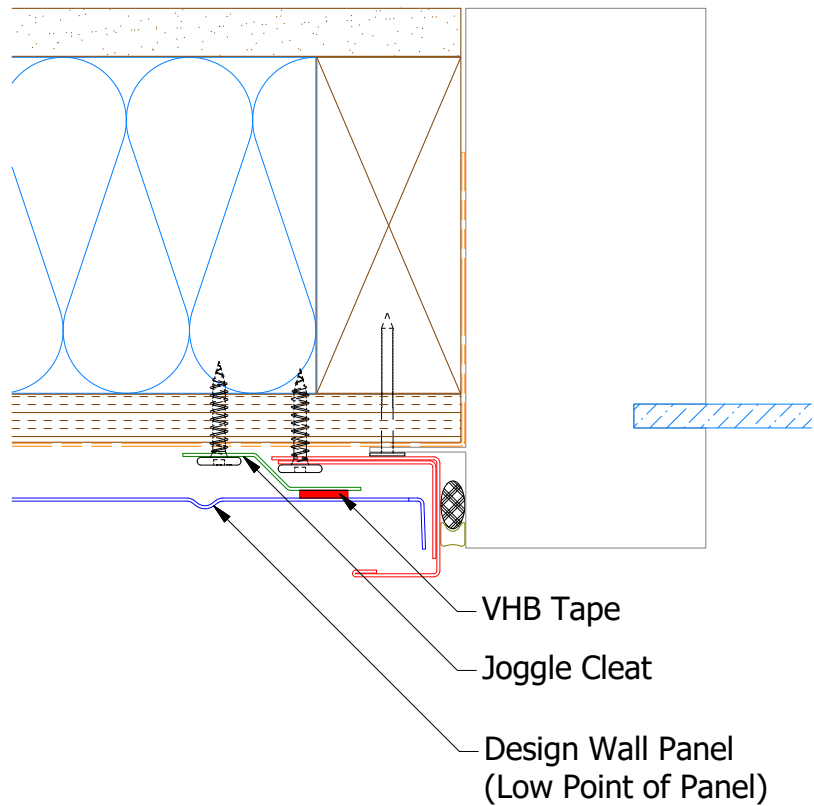
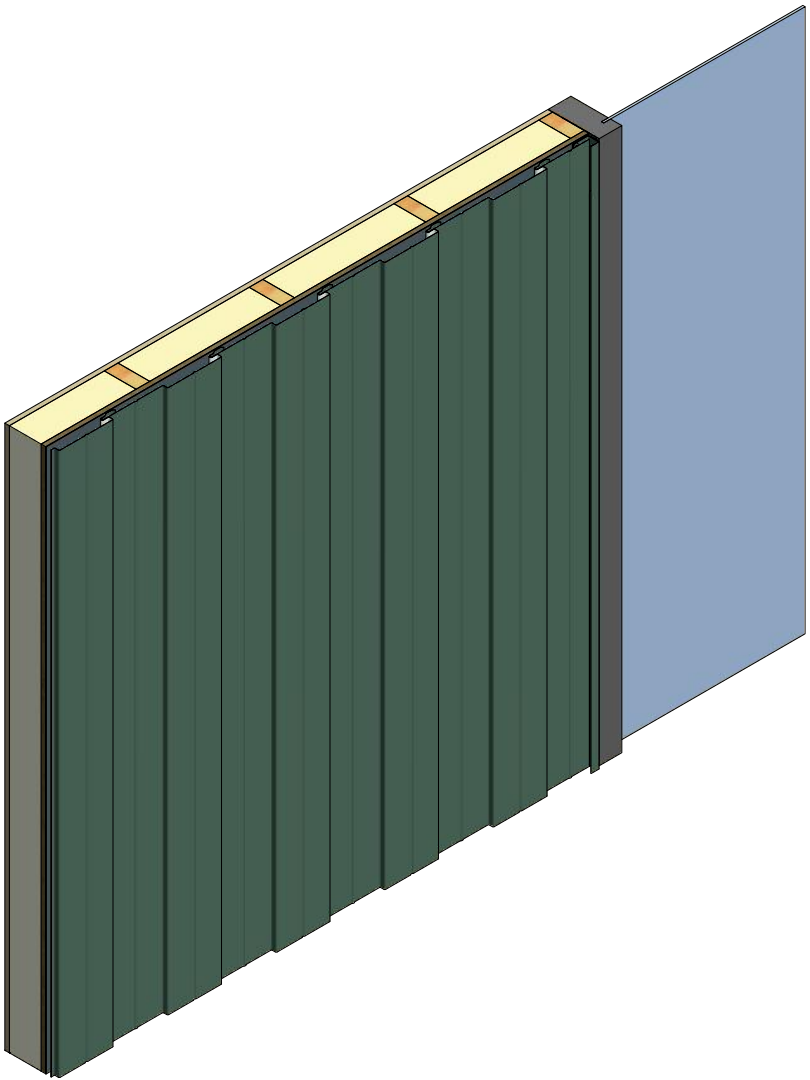
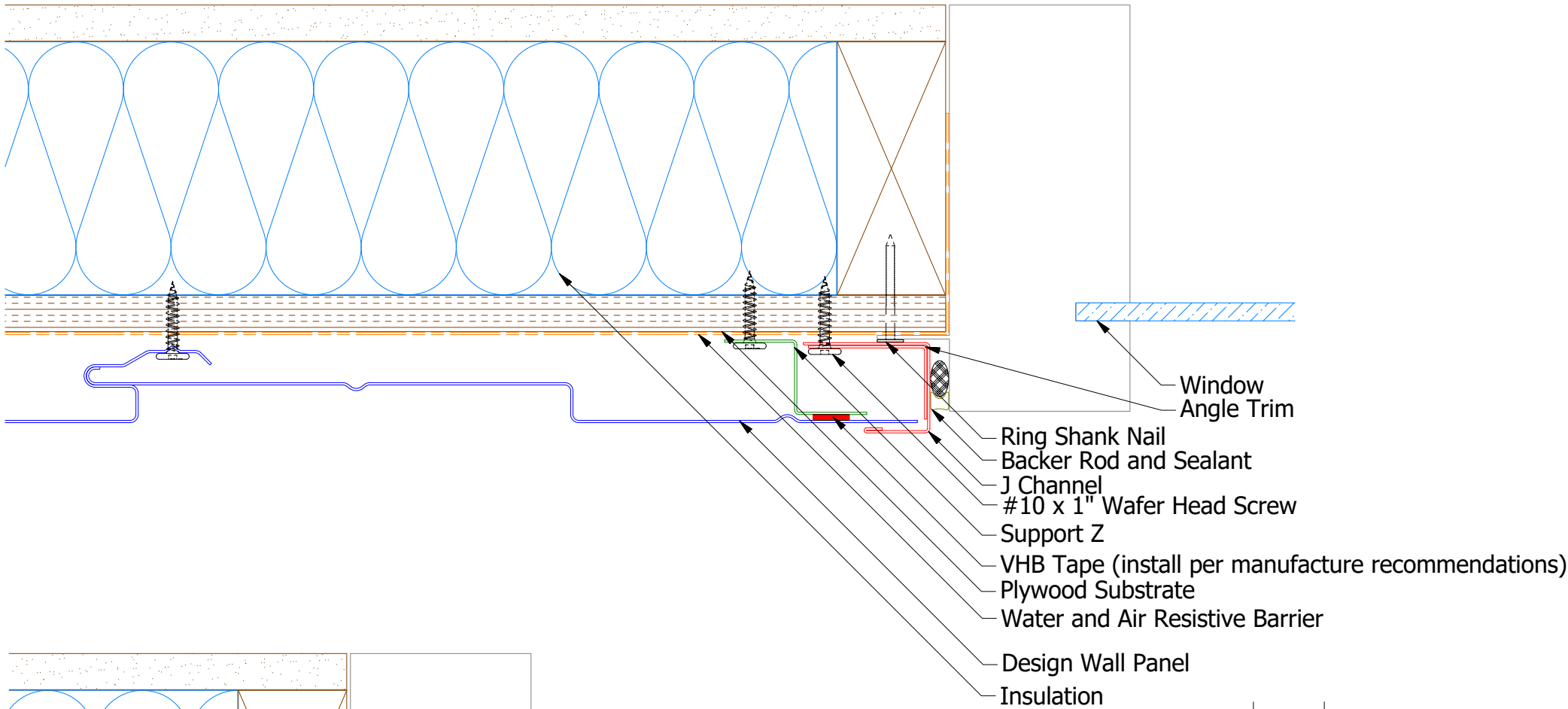
**Note:** \* denotes color side.

				TITLE	
				Design Wall Head Window Flange Detail	
				DWG. NO.	DR MBP DATE 7/27/2018
				APP	DATE
				MATERIAL	SH. SIZE B SCALE X:X
1	7/16/2021	Changed Pop Rivets to VHB Tape	DMR		
REV. NO.	DATE	DESCRIPTION OF REVISION	BY	APP	



ATAS INTERNATIONAL, INC  
Allentown PA  
610-395-8445  
Mesa AZ  
480-558-7210

Vertical Panel



**Note:** \* denotes color side.

**Note:** stainless steel pop rivets maybe needed along with VHB tape for longer panels.

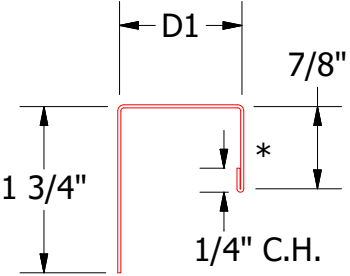
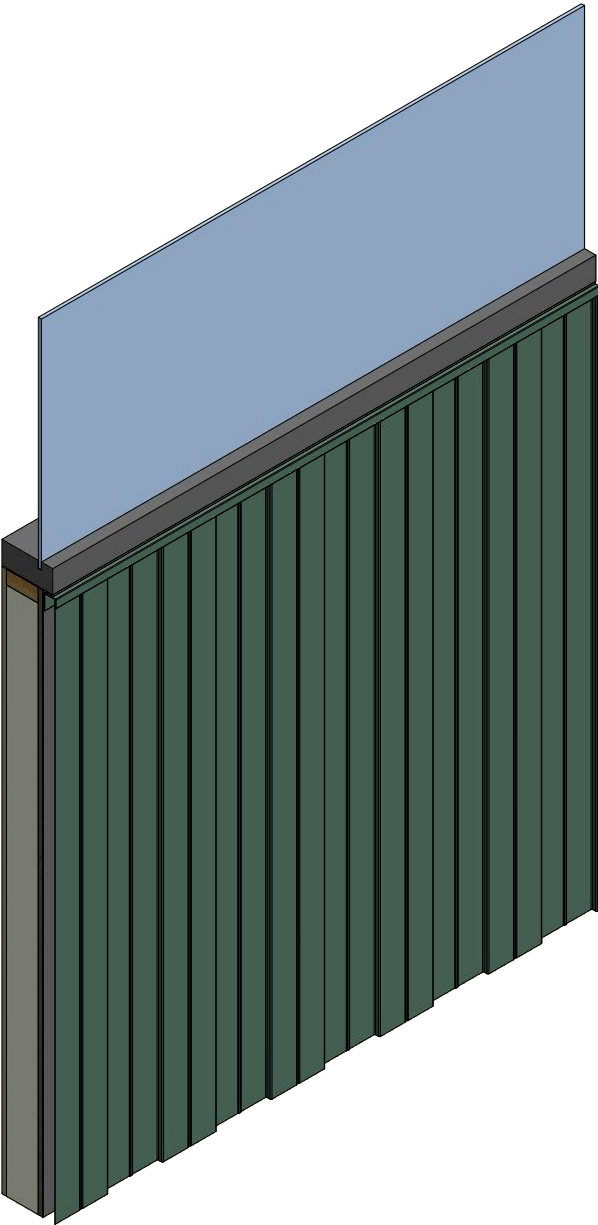
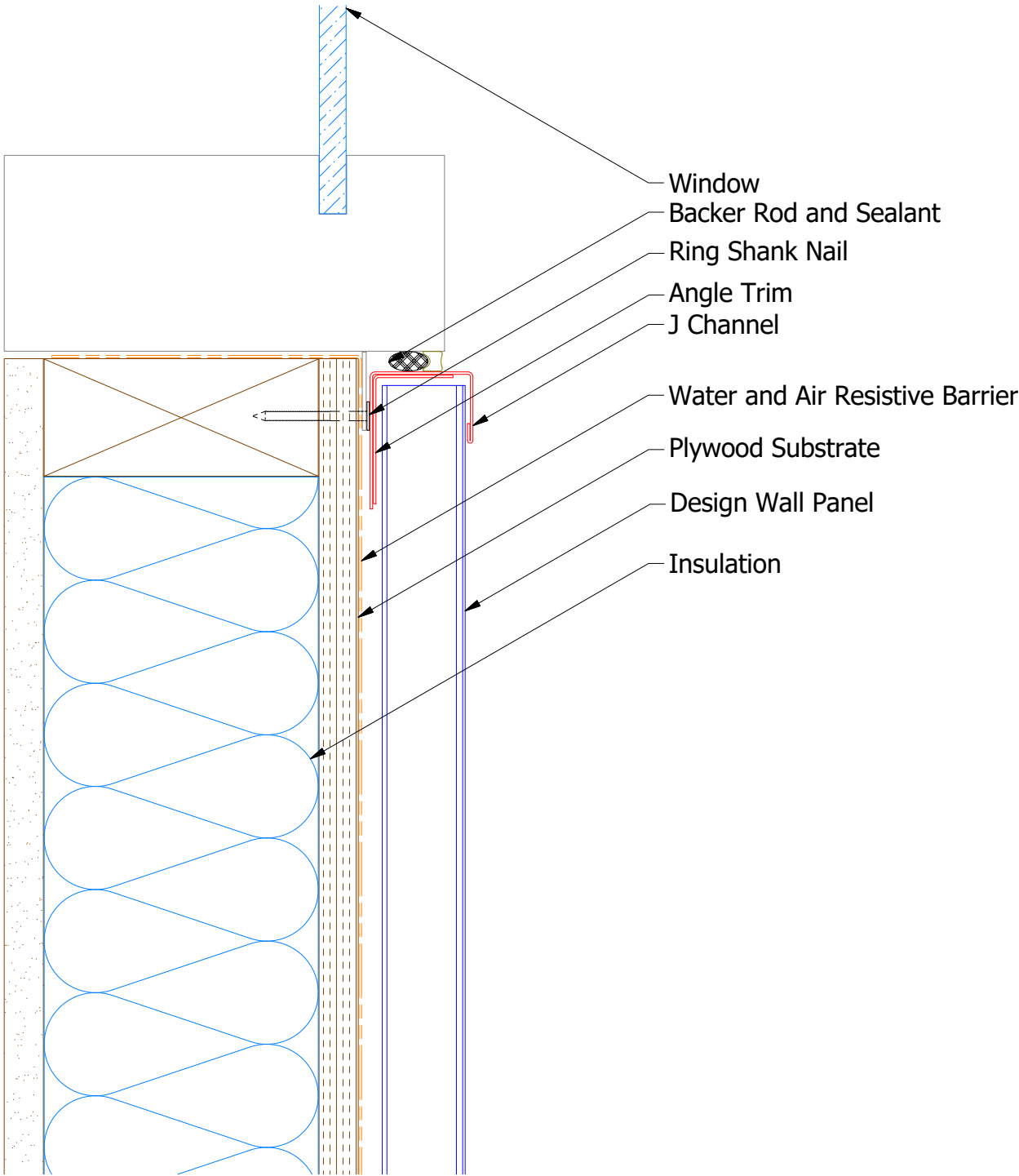
REVISIONS				TITLE		
REV. NO.	DATE	DESCRIPTION OF REVISION	BY	APP	Design Wall Jamb Window Flange Detail	
02	7/19/2021	Changed Pop Rivets to VHB Tape	DMR		DWG. NO.	DR MBP DATE 7/27/2018
01	11/6/2019	Updated SKU # for Angle Trim	KRK		MATERIAL	APP DATE
					SH. SIZE B	SCALE X:X



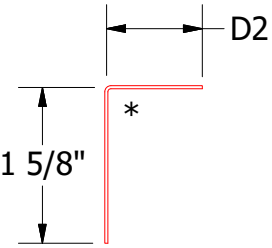
ATAS INTERNATIONAL, INC  
Allentown PA  
610-395-8445  
Mesa AZ  
480-558-7210



Vertical Panel



J Channel  
DWA118: D1= 1 1/8"  
DSA178: D1= 1 7/8"



Angle Trim  
DWA680: D2= 1"  
DSA680: D2= 1 3/4"

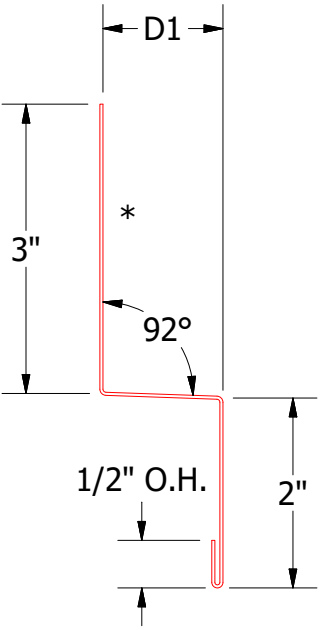
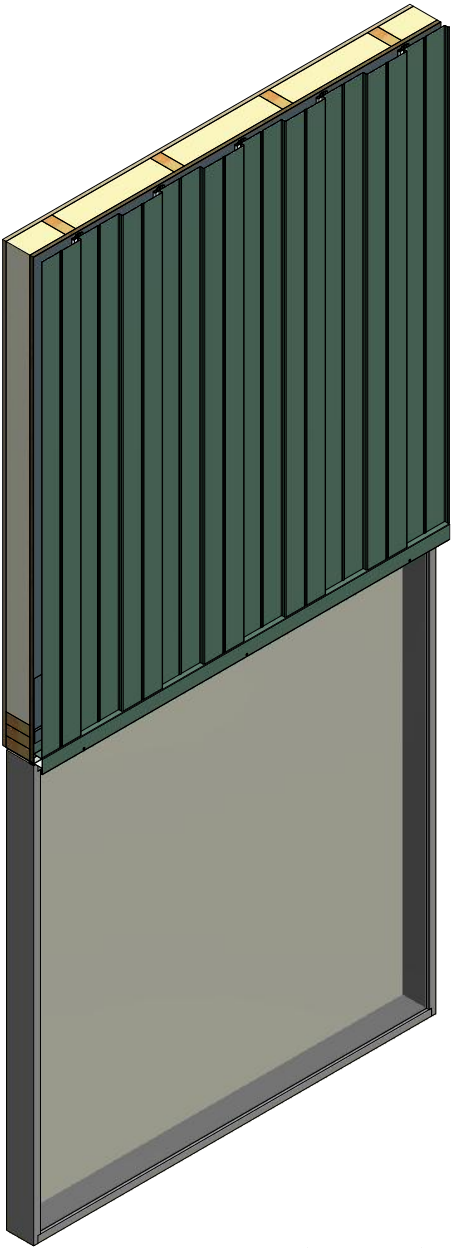
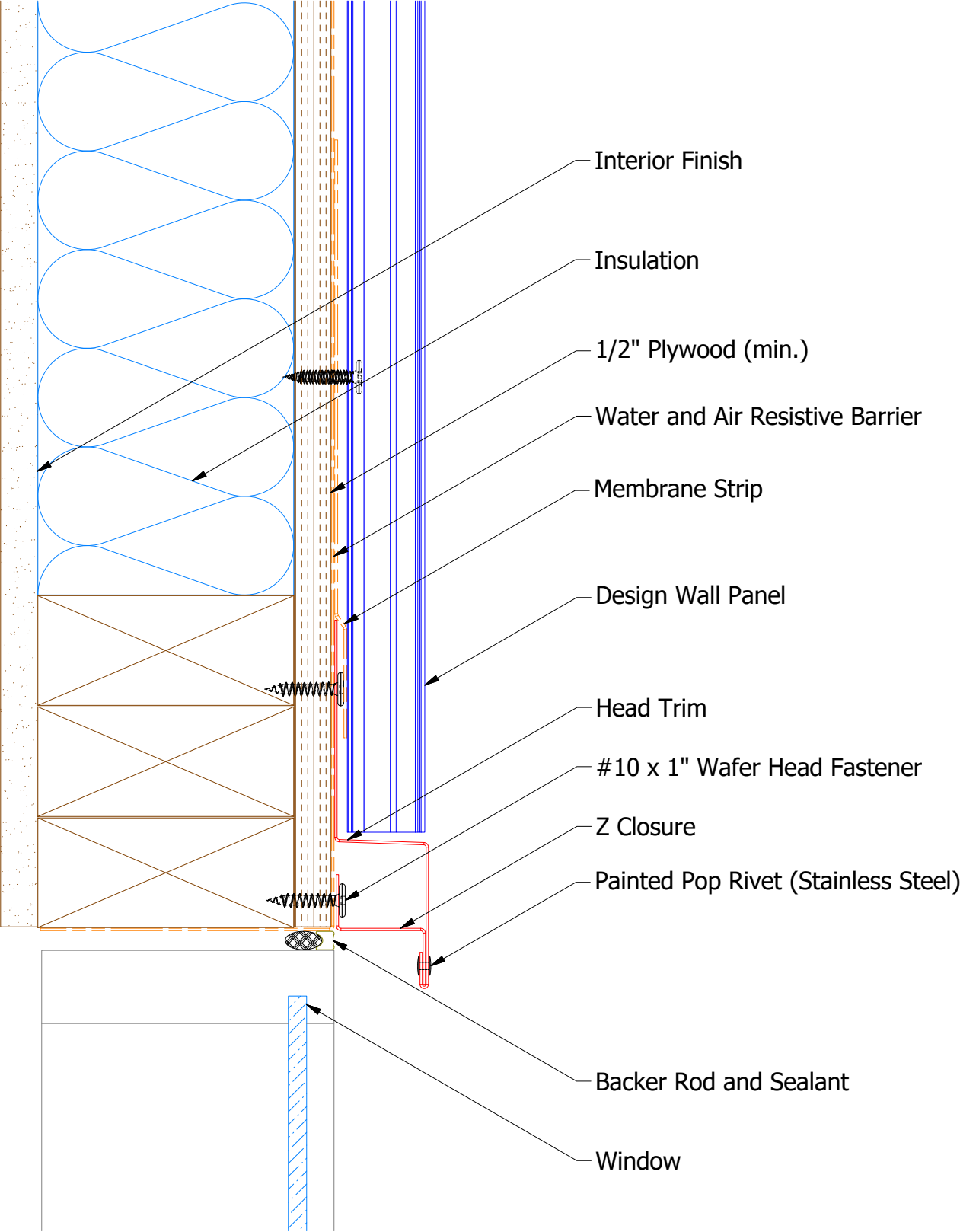
**Note:** \* denotes color side.

REV. NO.		DATE	DESCRIPTION OF REVISION	BY	APP	TITLE		
02	7/22/2021		Changed Pop Rivets to VHB Tape	DMR		Design Wall Window Sill Flange Detail		
01	11/6/2019		Updated SKU # for Angle Trim	KRK				
DR		MBP	DATE		7/27/2018			
APP			DATE					
MATERIAL			SH. SIZE		B	SCALE		X:X

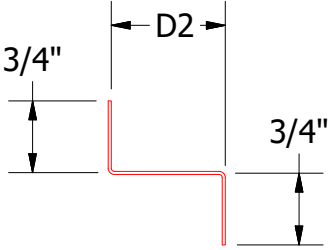


ATAS INTERNATIONAL, INC  
Allentown PA  
610-395-8445  
Mesa AZ  
480-558-7210

Vertical Panel



Head Trim  
DWA550: D1=1 1/4"  
DSA550: D1=2"



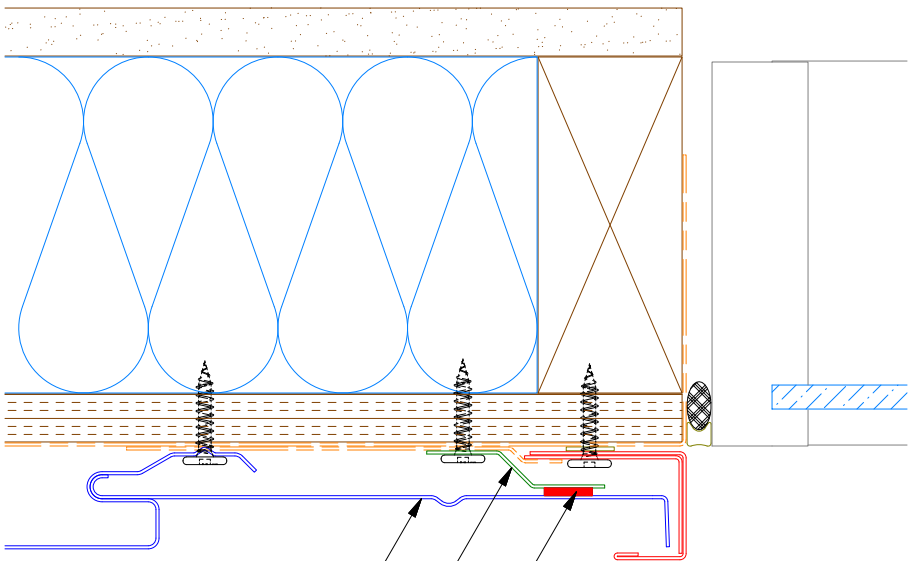
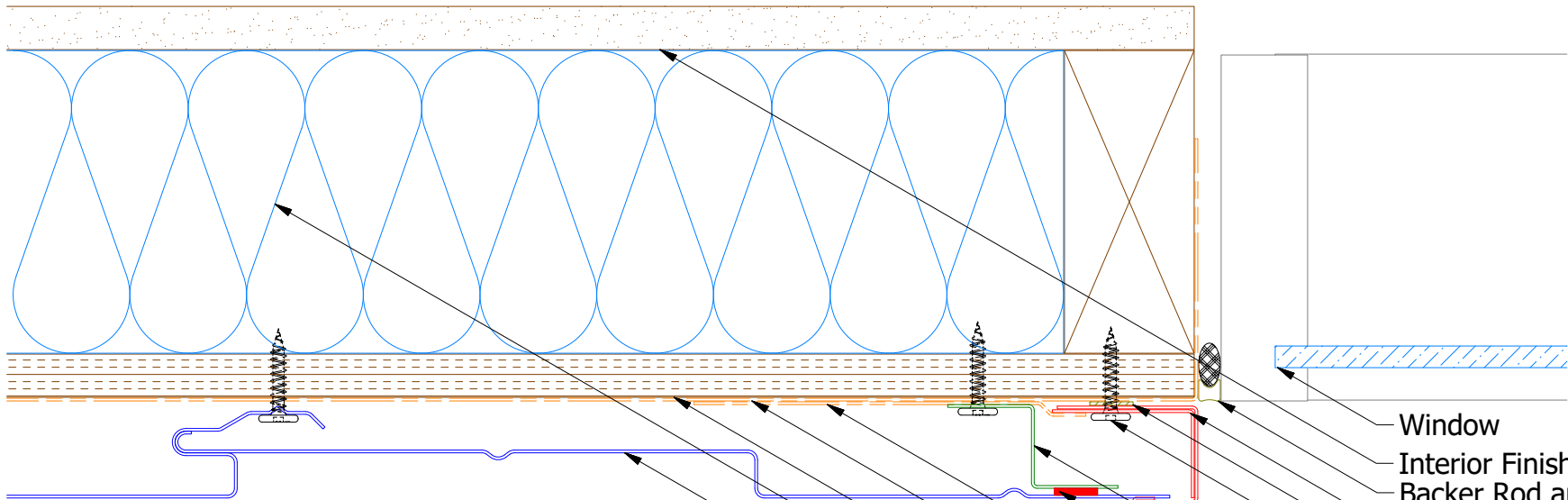
Z Closure  
D2=1 3/16"  
D2=1 15/16"

Note: \* denotes color side.

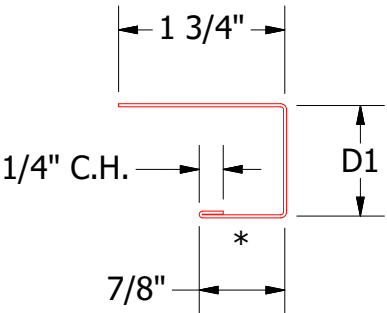
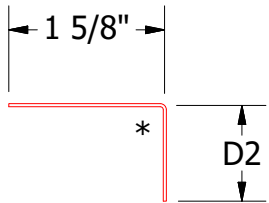
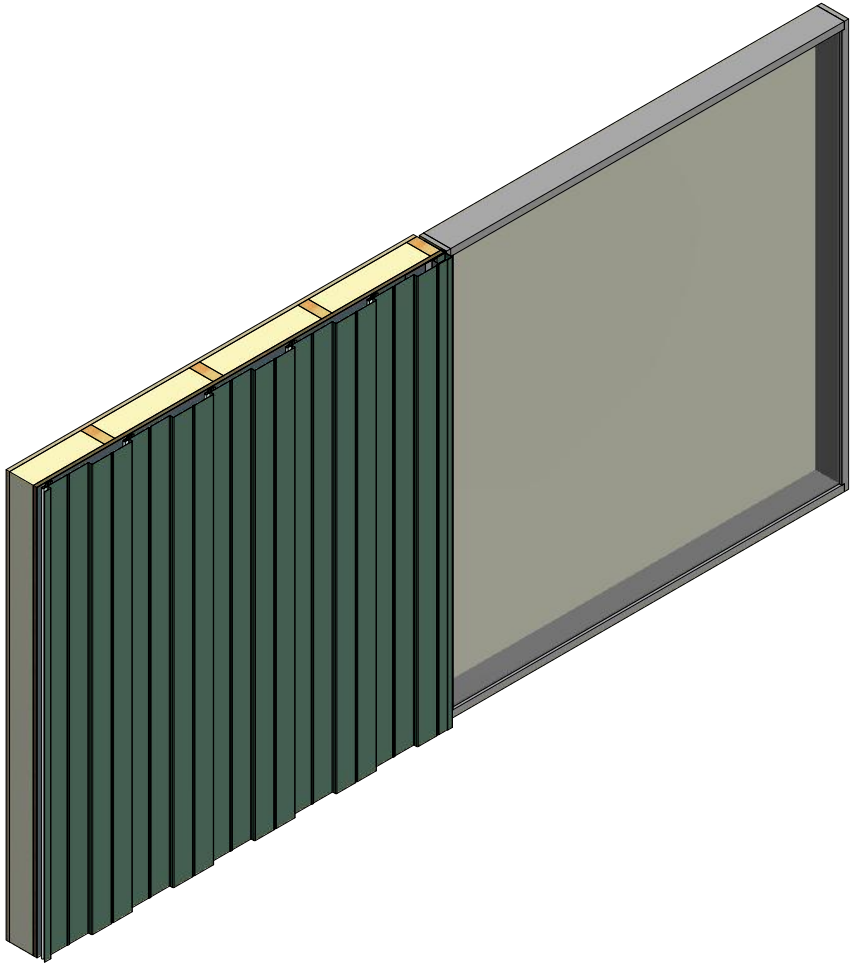
				TITLE	
				Design Wall Existing Head Detail	
				DWG. NO.	DR
					DMR
				DATE	7/16/2018
				APP	DATE
				MATERIAL	
				SH. SIZE	B
				SCALE	X:X



Vertical Panel



- Window
- Interior Finish
- Backer Rod and Sealant
- Angle Trim
- Butyl Tape
- #10 x 1" Wafer Head Fastener
- J Channel
- Support Z
- VHB Tape (install per manufacture recommendations)
- Membrane Strip
- Water and Air Resistive Barrier
- 1/2" Plywood (min.)
- Insulation
- Design Wall Panel (High Point)



J Channel

DWA118: D1=1 1/8"  
DSA178: D1=1 7/8"

Angle Trim

DWA680: D2=1"  
DSA680: D2=1 1/2"

Design Wall Panel (Low Point)

Joggle Cleat

VHB Tape

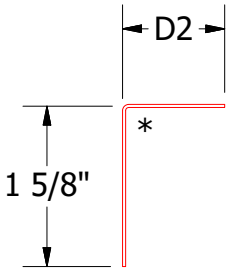
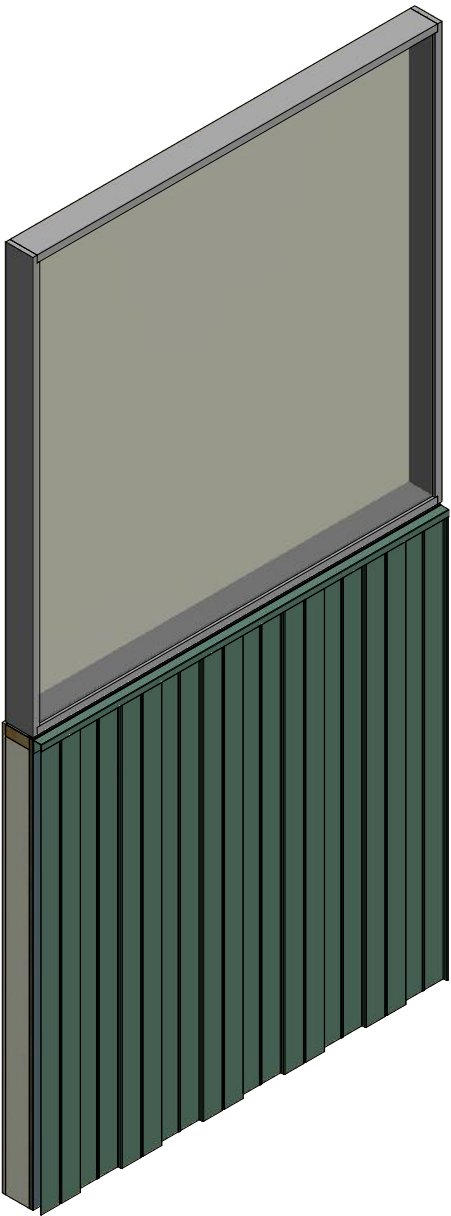
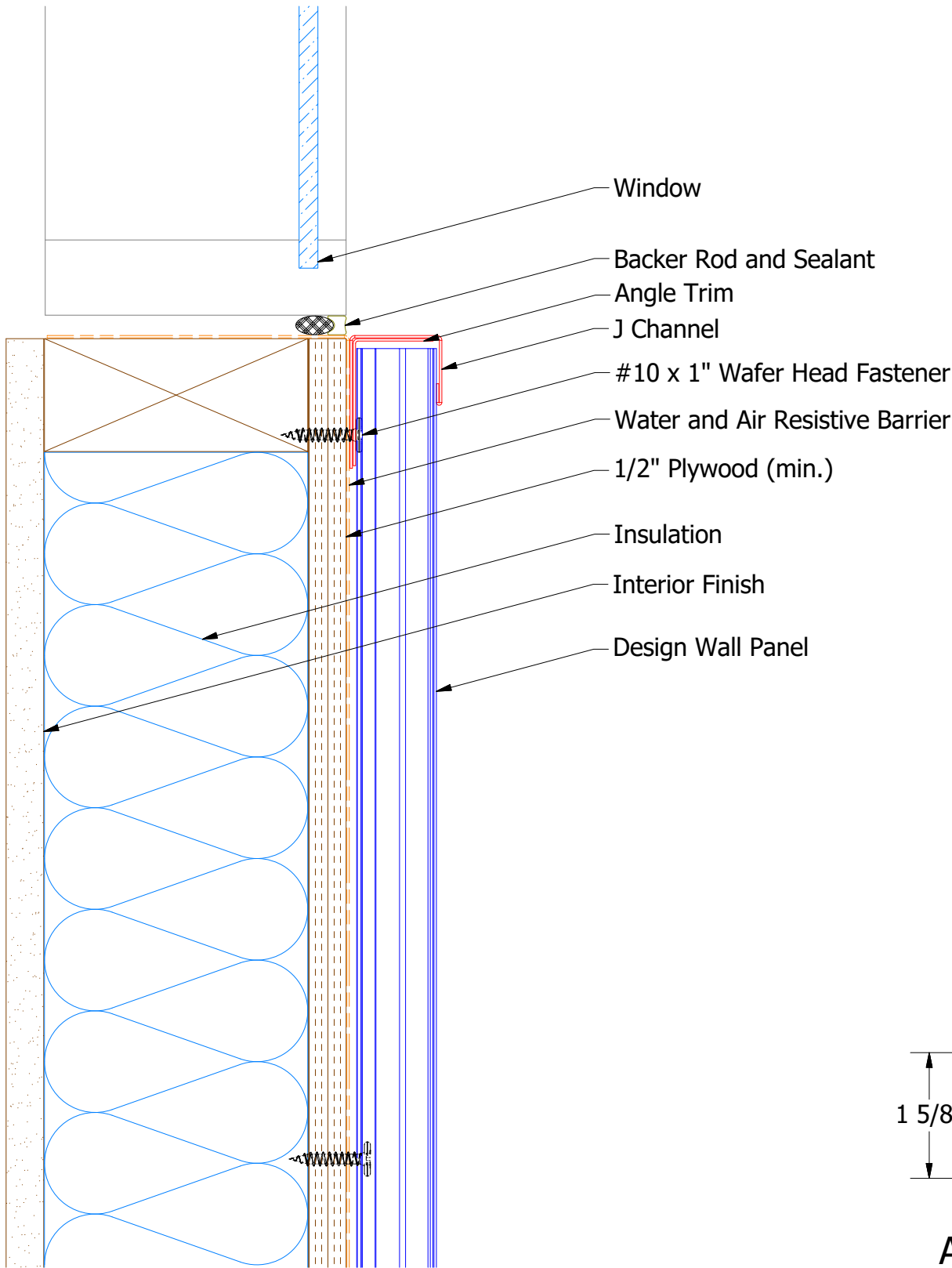
**Note:** \* denotes color side.  
**Note:** stainless steel pop rivets maybe needed along with VHB tape for longer panels.

TITLE				Design Wall Existing Jamb Detail			
REV. NO.	DATE	DESCRIPTION OF REVISION	BY	APP	DWG. NO.		DR
					MATERIAL		DMR
01	7/19/2021	Changed Pop Rivets to VHB Tape	DMR				DATE
							SH. SIZE
							B
							SCALE
							X:X

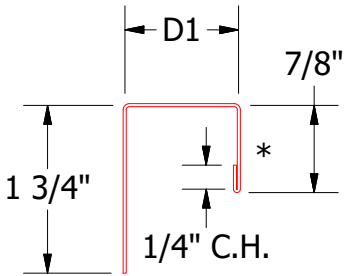


ATAS INTERNATIONAL, INC  
Allentown PA  
610-395-8445  
Mesa AZ  
480-558-7210

Vertical Panel



Angle Trim  
DWA680: D2=1"  
DSA680: D2=1 3/4"



J Channel  
DWA118: D1=1 1/8"  
DSA178: D1=1 7/8"

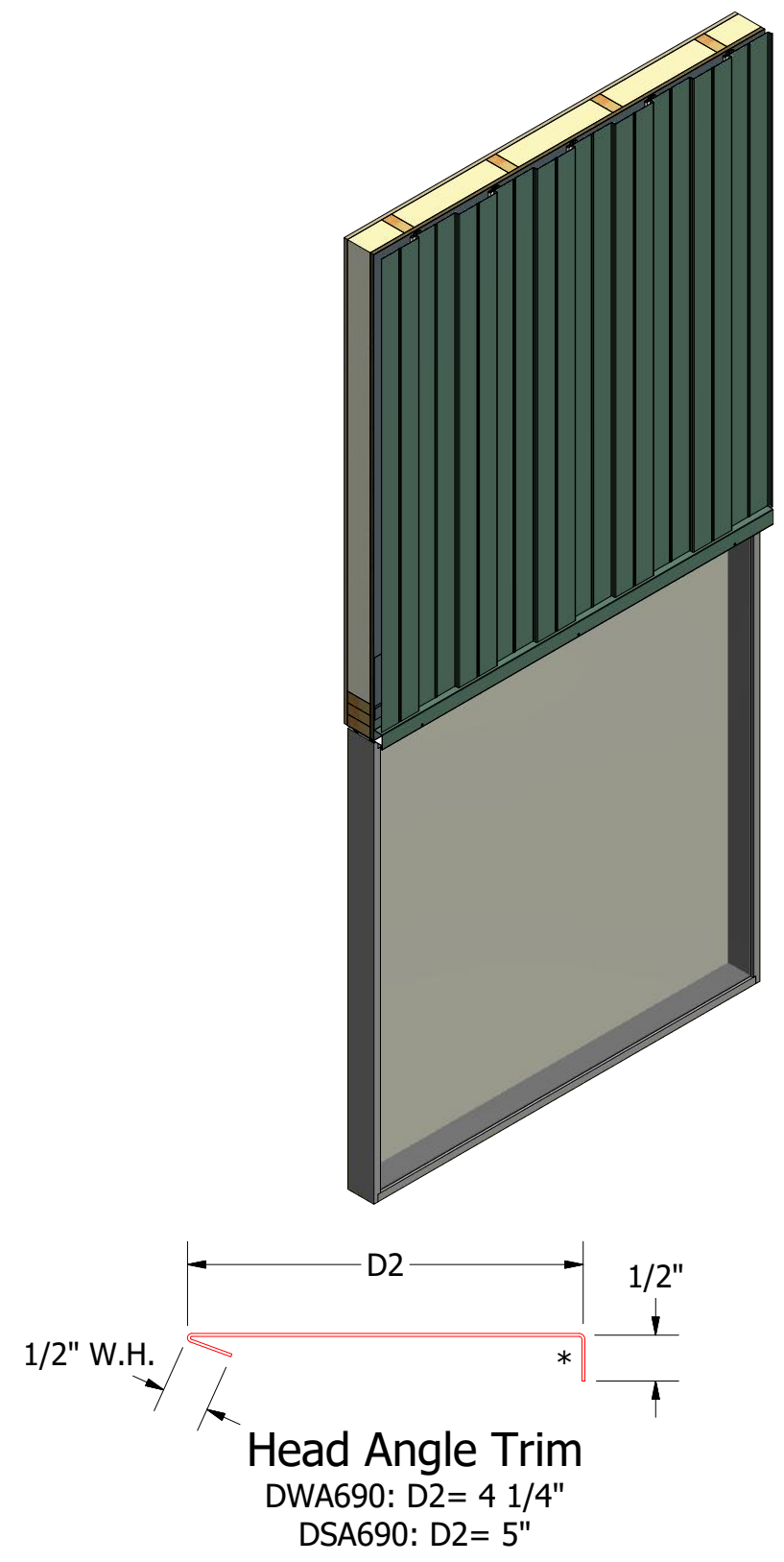
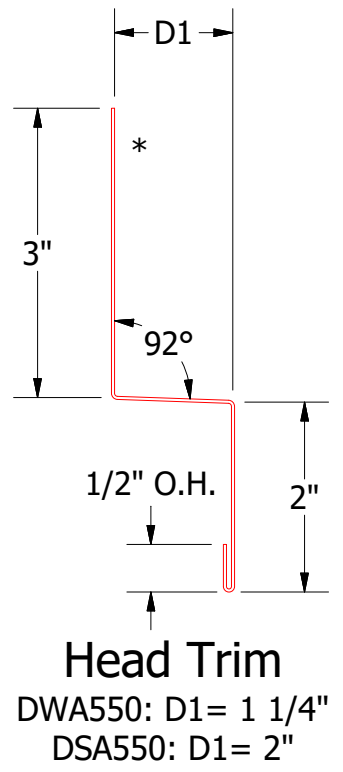
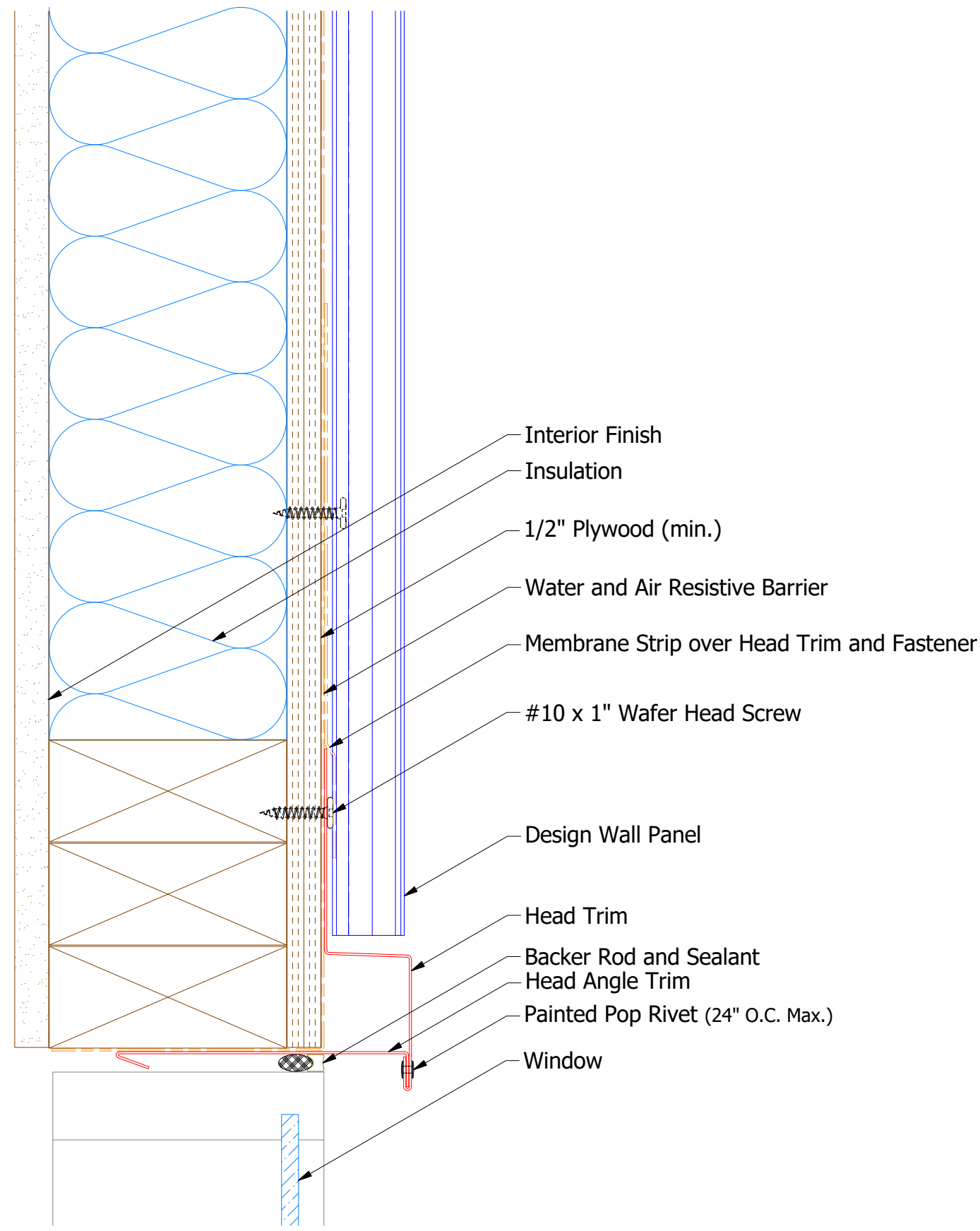
**Note:** \* denotes color side.

						TITLE	
						Design Wall Existing Window Sill Detail	
						DWG. NO.	
						DR	
						DMR	
						DATE 7/20/2018	
01	7/19/2021	Changed Pop Rivets to VHB Tape		DMR		APP	
						MATERIAL	
						SH. SIZE	
						B	
						SCALE	
						X:X	



ATAS INTERNATIONAL, INC  
Allentown PA  
610-395-8445  
Mesa AZ  
480-558-7210

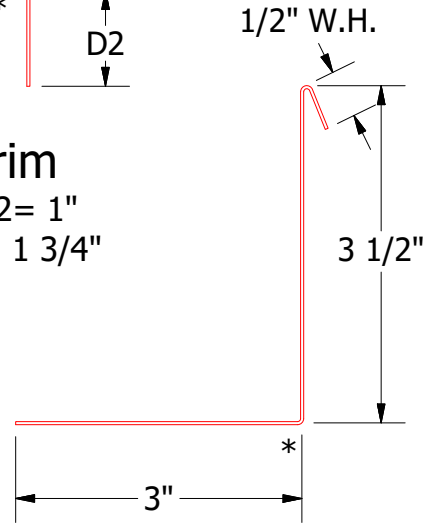
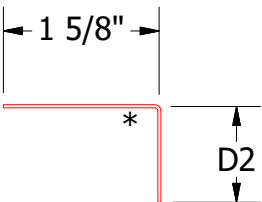
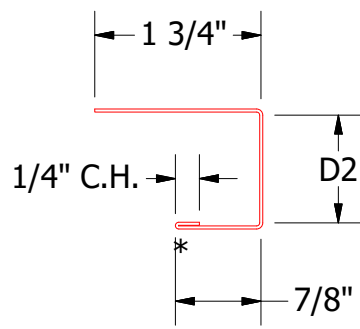
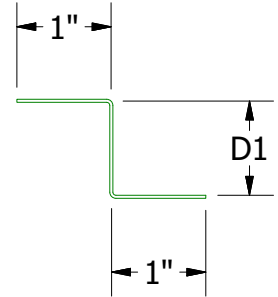
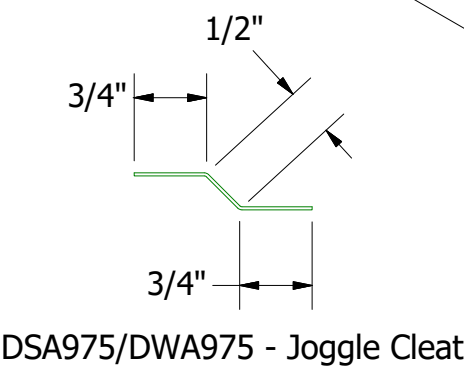
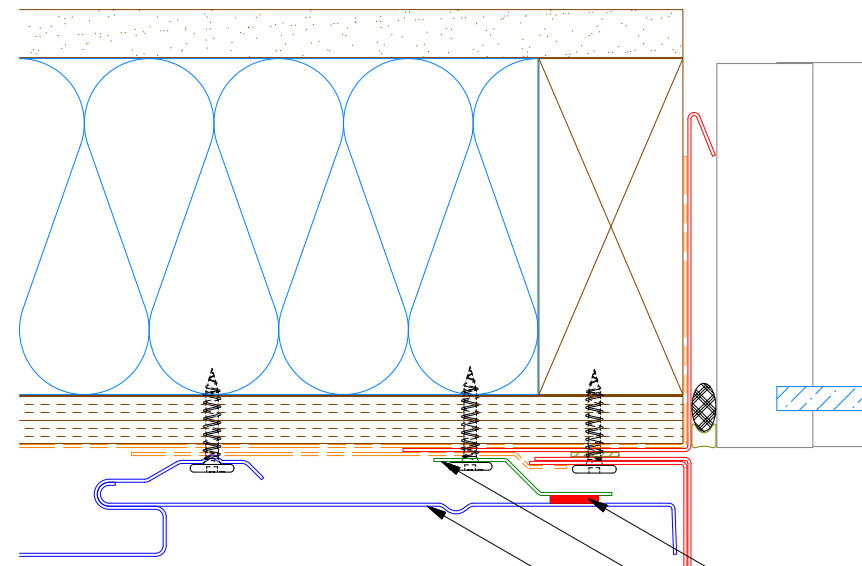
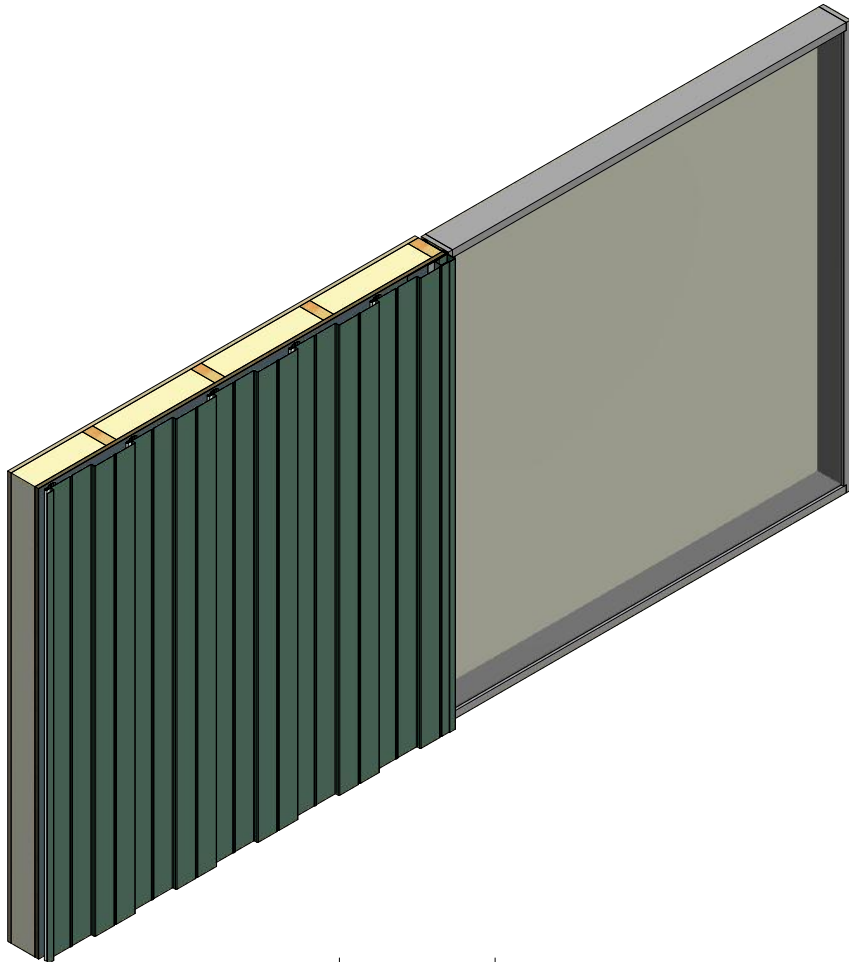
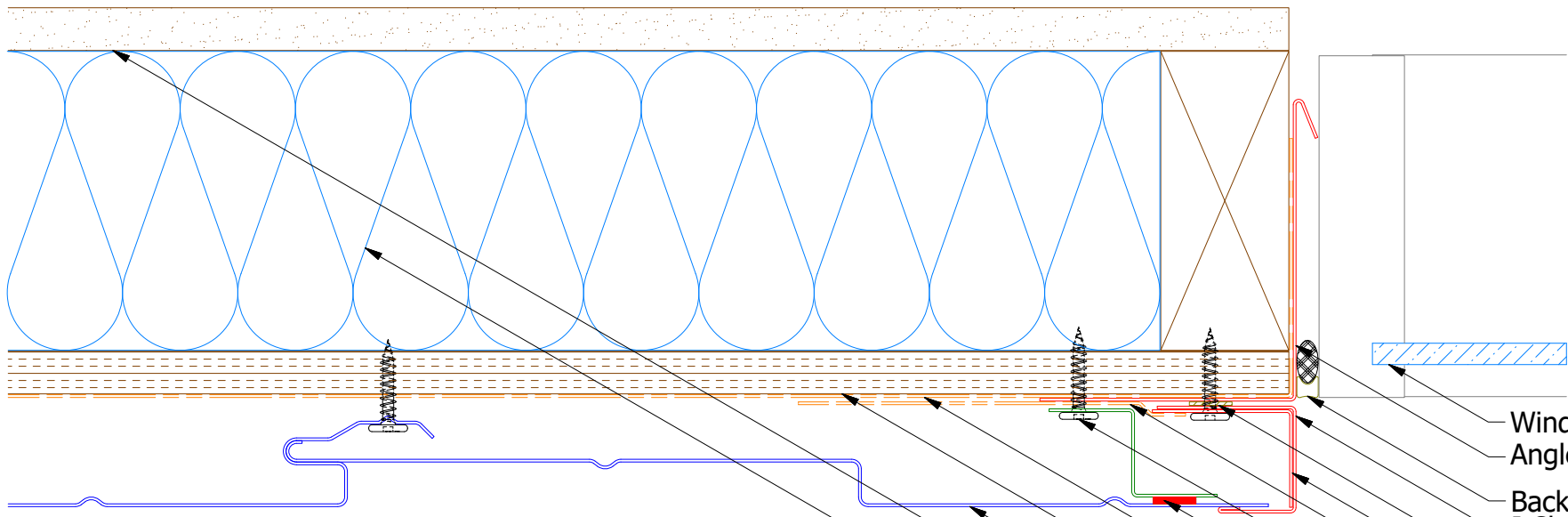
Vertical Panel



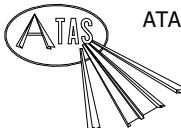
Note: \* denotes color side.

				TITLE			
				Design Wall Head Detail			
				DWG. NO.		DR	DATE
						DMR	6/24/2016
						APP	DATE
						DAS	7/26/16
				MATERIAL		SH. SIZE	SCALE
						B	X:X

Vertical Panel



**Note:** \* denotes color side.  
**Note:** stainless steel pop rivets maybe needed along with VHB tape for longer panels.

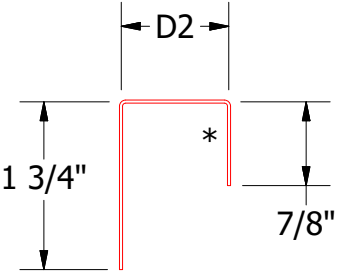
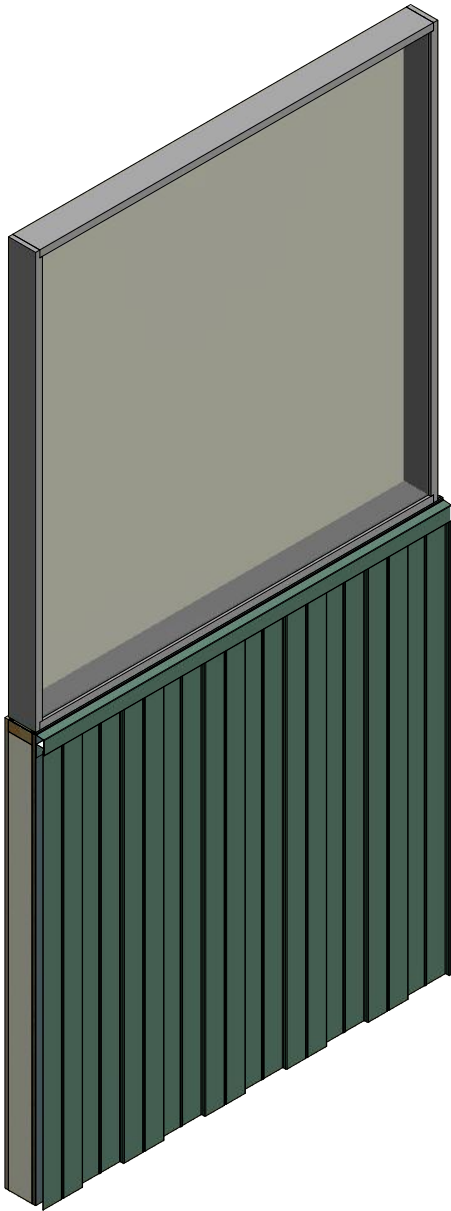
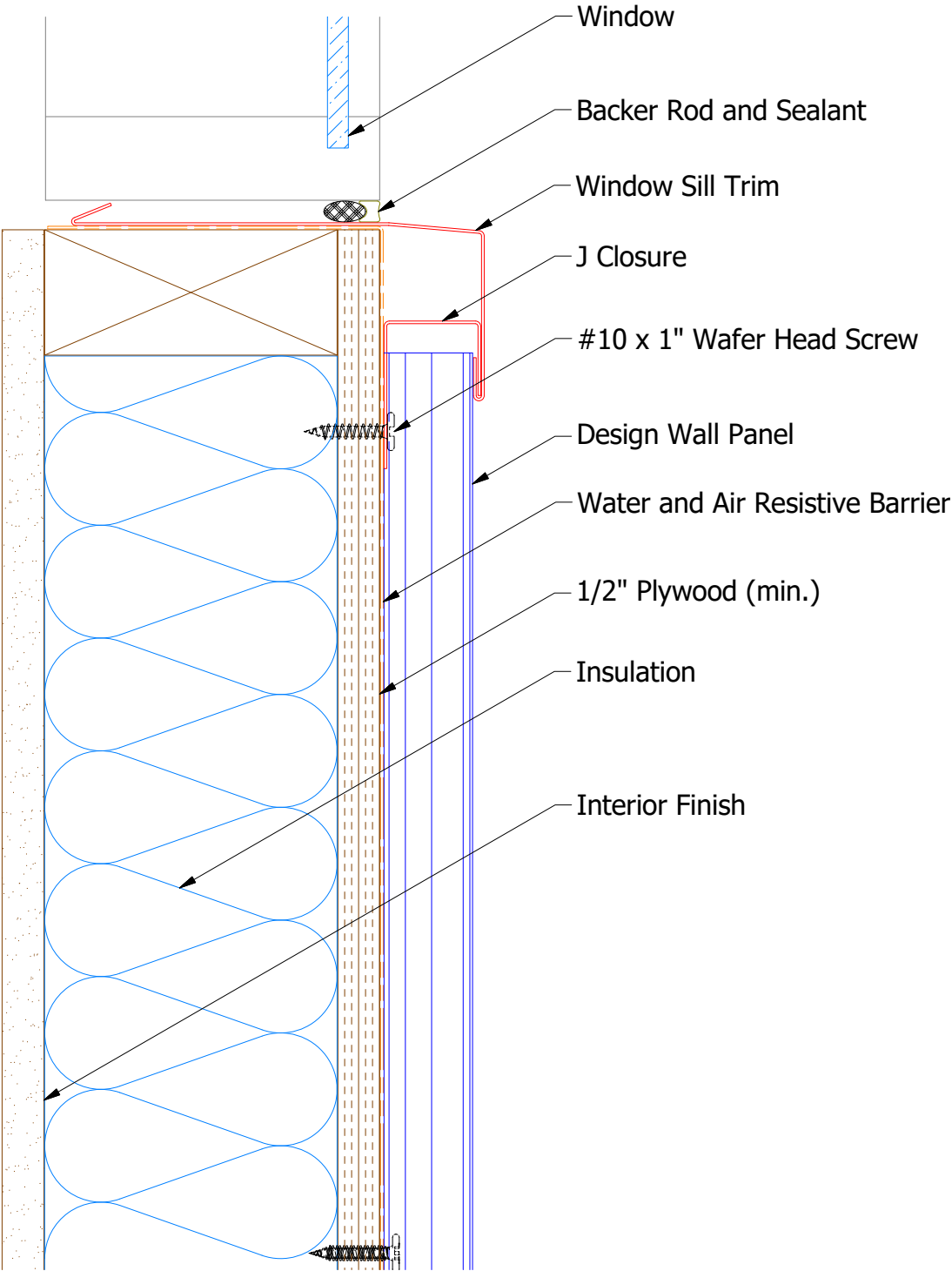


ATAS INTERNATIONAL, INC  
Allentown PA  
610-395-8445  
Mesa AZ  
480-558-7210

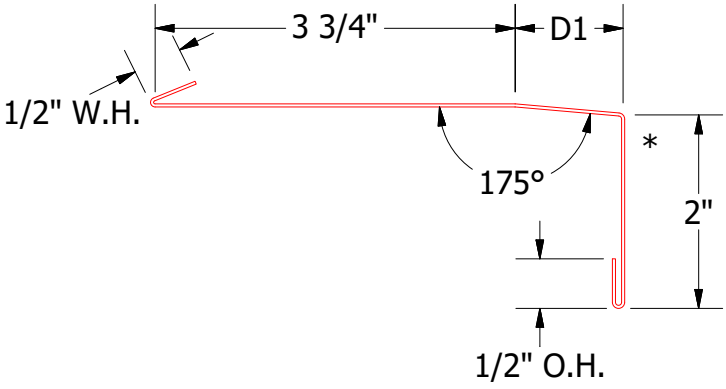
TITLE			
Design Wall Jamb Detail			
DWG. NO.	DR	DMR	DATE
01	7/19/2021	Changed Pop Rivets to VHB Tape	DMR
REV. NO.	DATE	DESCRIPTION OF REVISION	BY APP

MATERIAL	SH. SIZE	B	SCALE	X:X

Vertical Panel



J Closure  
DWA270: D2= 1 1/8"  
DSA270: D2= 1 7/8"



Window Sill Trim  
DWA670: D1= 1 1/8"  
DSA670: D1= 1 7/8"

**Note:** \* denotes color side.

TITLE			
Design Wall Window Sill Detail			
REV. NO.	DATE	DESCRIPTION OF REVISION	BY APP
01	7/19/2021	Changed Pop Rivets to VHB Tape	DMR

DWG. NO.		DR	DATE
		DMR	6/29/2016
MATERIAL		APP	DATE
		DAS	7/26/16
SH. SIZE		B	SCALE
			X:X



ATAS INTERNATIONAL, INC  
Allentown PA  
610-395-8445  
Mesa AZ  
480-558-7210