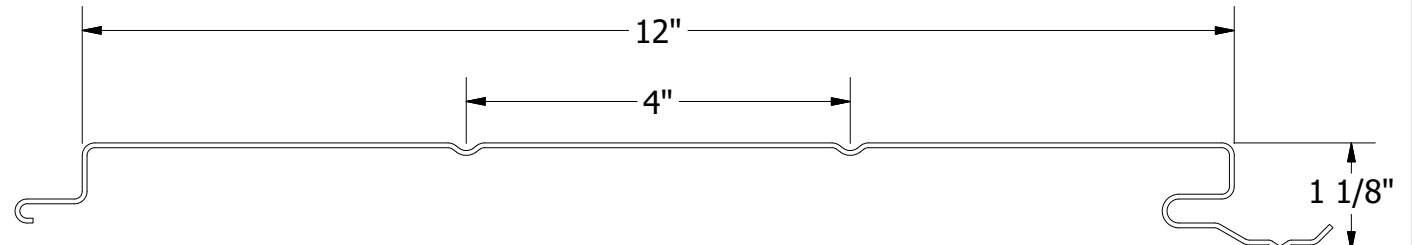
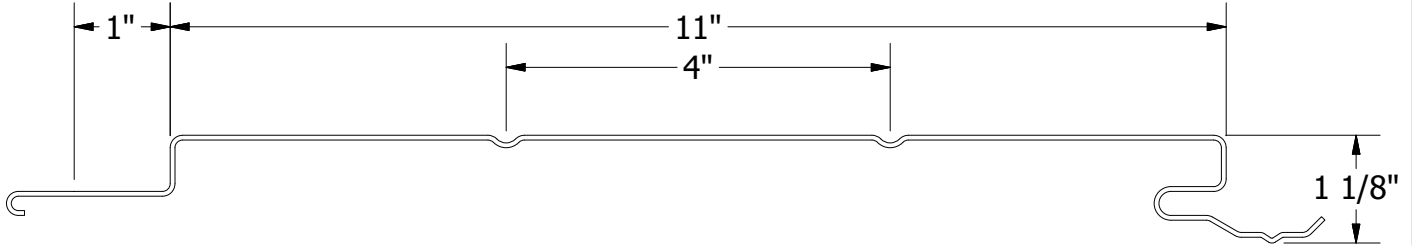
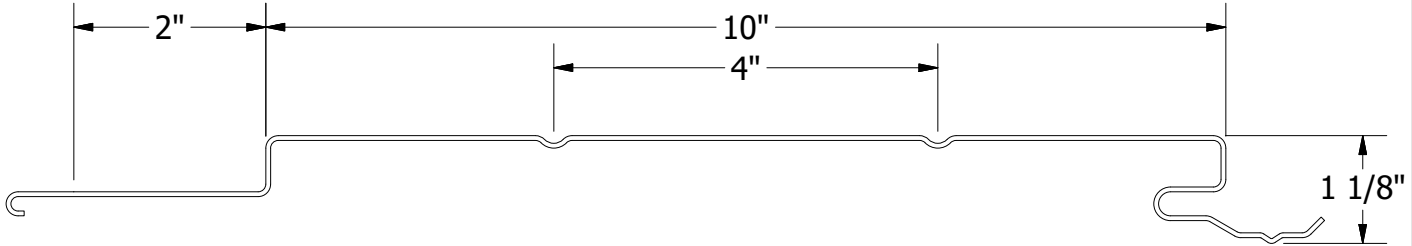
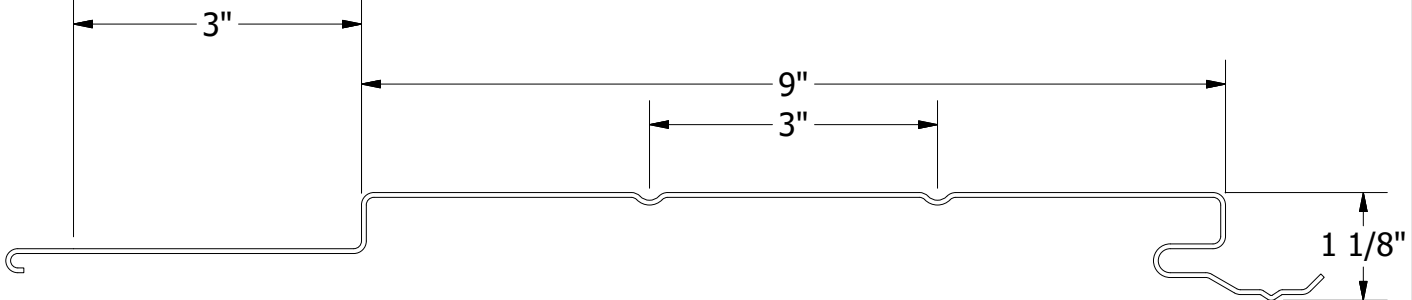
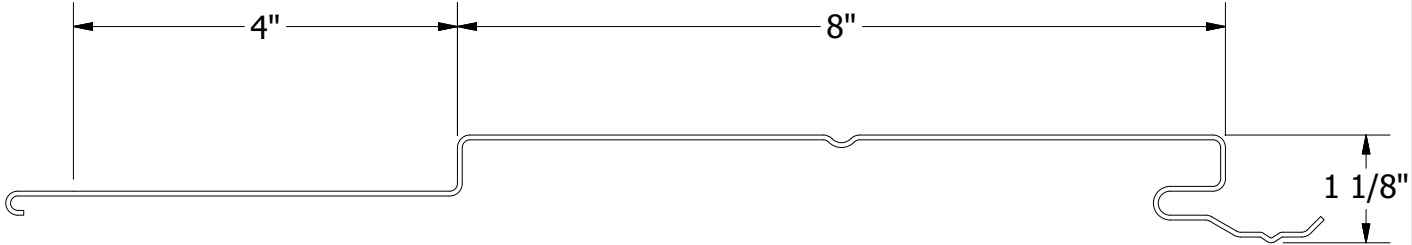
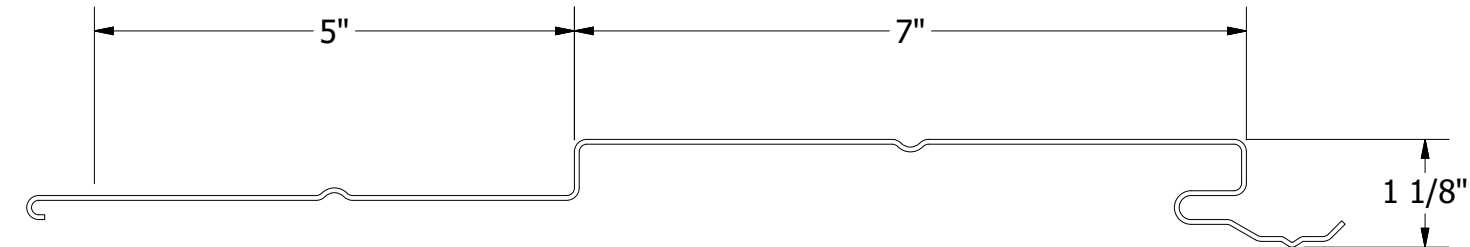
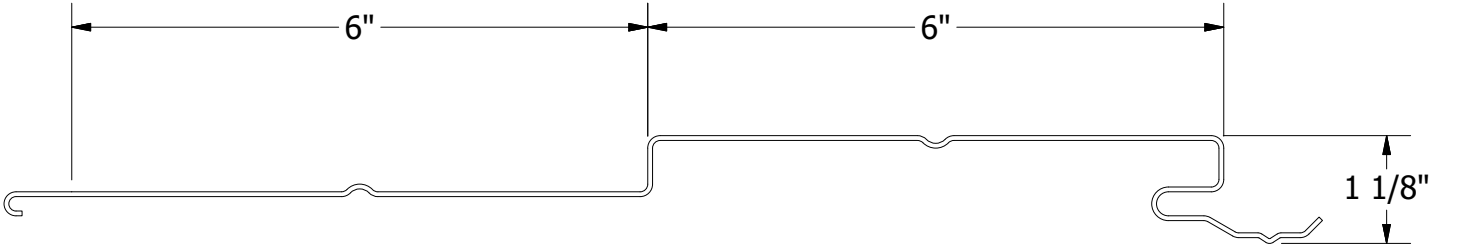
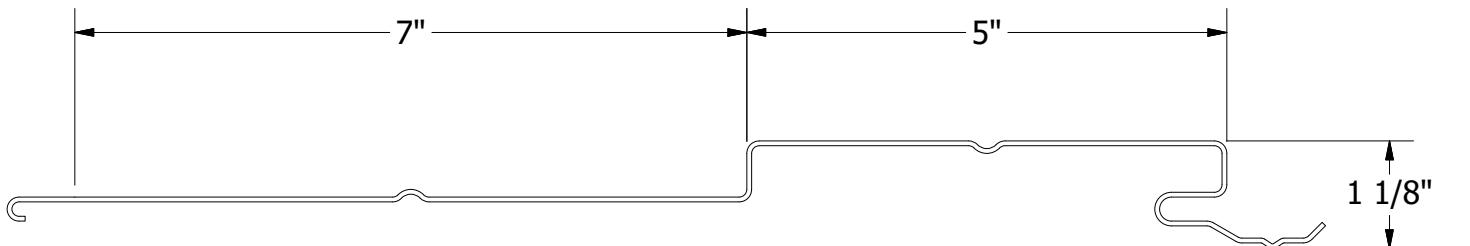
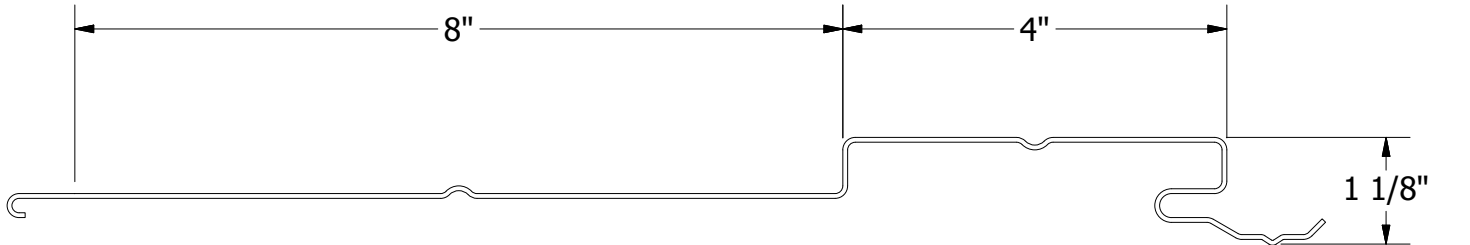
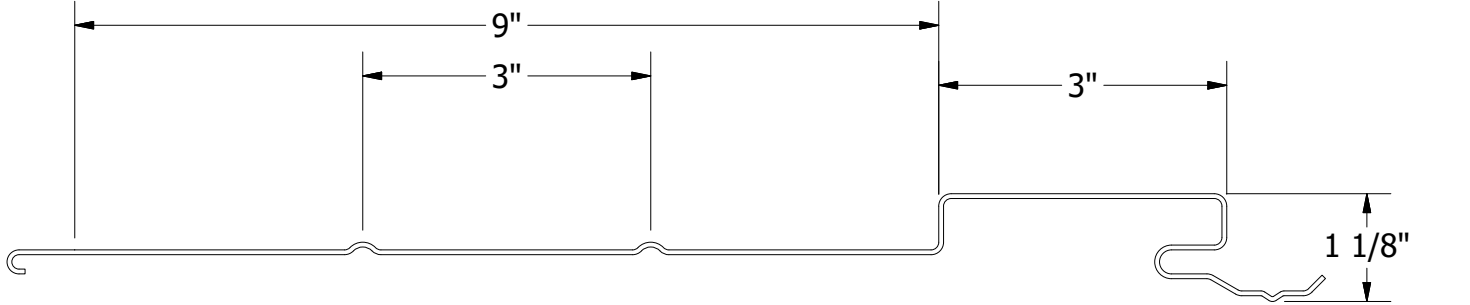
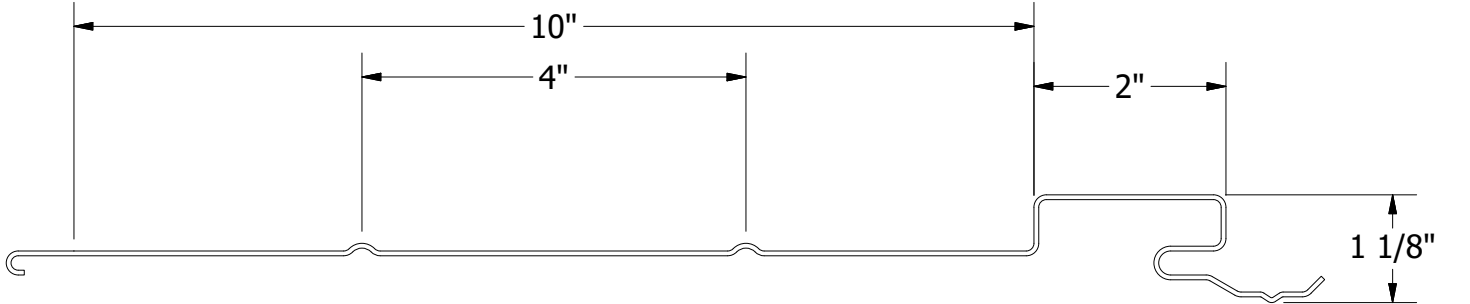


DSF & DSH Design Wall Panels

					Design Wall Panel Profile Detail						
					DWG. NO.			DR	KRK	DATE	7/26/2016
					MATERIAL			APP	DAS	DATE	7/26/2016
REV. NO.	DATE	DESCRIPTION OF REVISION		BY				APP	SH. SIZE	B	SCALE

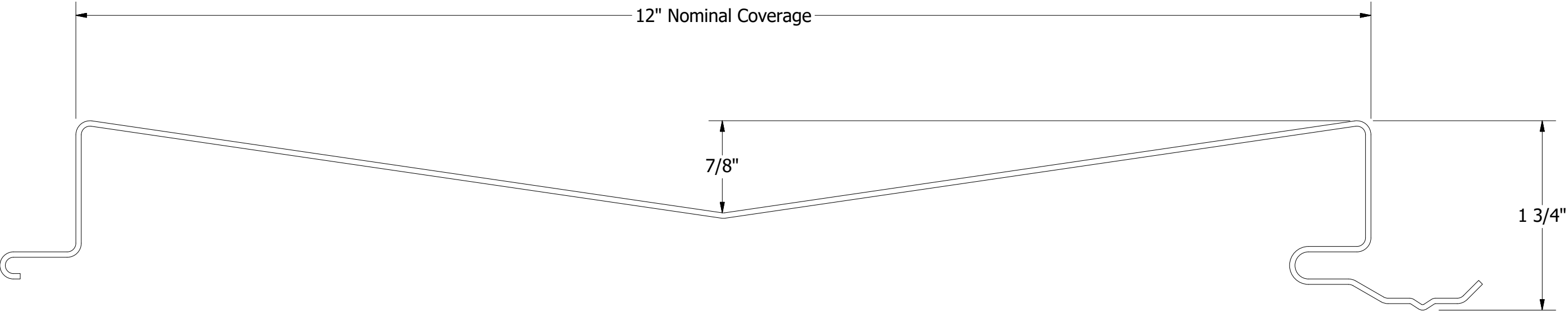


DWF & DWH Design Wall Panels

						TITLE		
						Design Wall Panel Profile Detail		
						DWG. NO.	DR	DATE
							KRK	7/26/2016
							APP	DAS
								DATE
								7/26/2016
						MATERIAL	SH. SIZE	SCALE
							B	X:X
REV. NO.	DATE	DESCRIPTION OF REVISION	BY	APP				



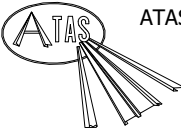
ATAS INTERNATIONAL, INC
Allentown PA
610-395-8445
Mesa AZ
480-558-7210



DSV120 - Design Wall Panel

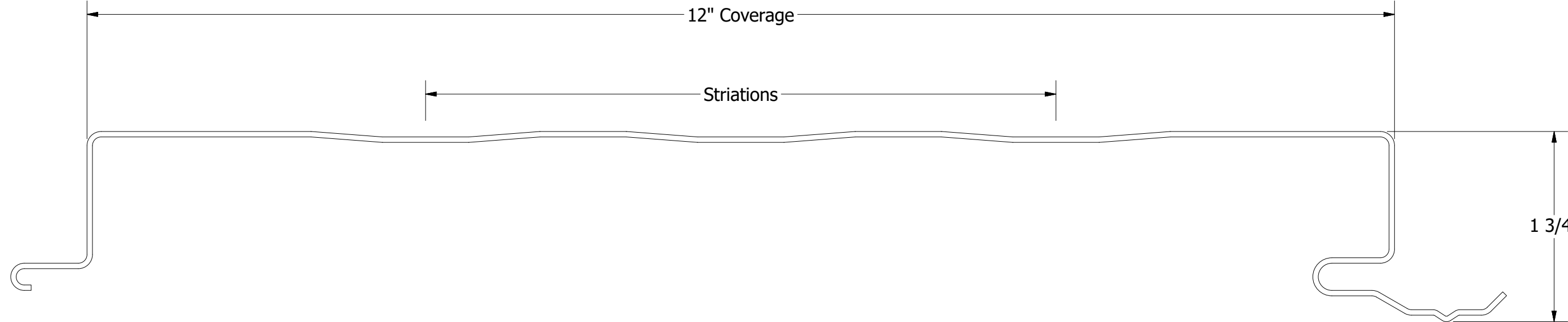
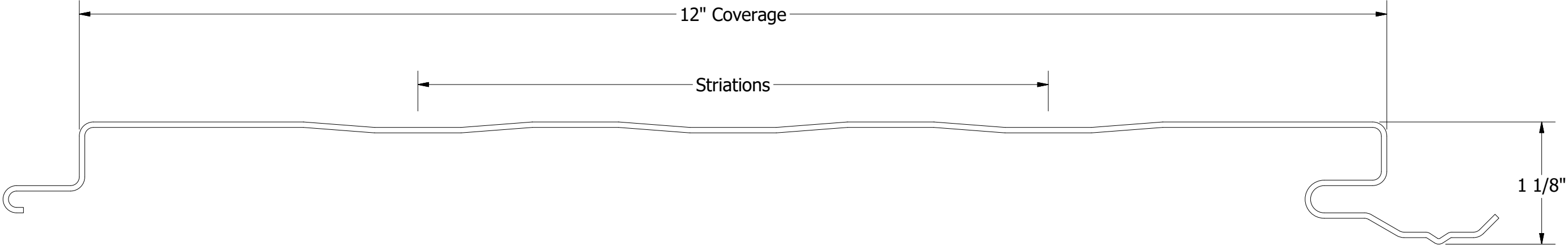
Minimum Length: 3'-0"
Maximum Length: 26'-0"

					TITLE		
					Design Wall Panel Profile Detail		
					DWG. NO.	DR KRK	DATE 7/26/2016
						APP DAS	DATE 7/26/2016
REV. NO.	DATE	DESCRIPTION OF REVISION	BY	APP	MATERIAL		
					SH. SIZE	B	SCALE X:X



ATAS INTERNATIONAL, INC
Allentown PA
610-395-8445
Mesa AZ
480-558-7210

TITLE		
Design Wall Panel Profile Detail		
DWG. NO.	DR KRK	DATE 7/26/2016
	APP DAS	DATE 7/26/2016
MATERIAL		
SH. SIZE	B	SCALE X:X

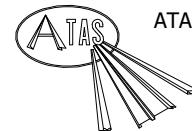
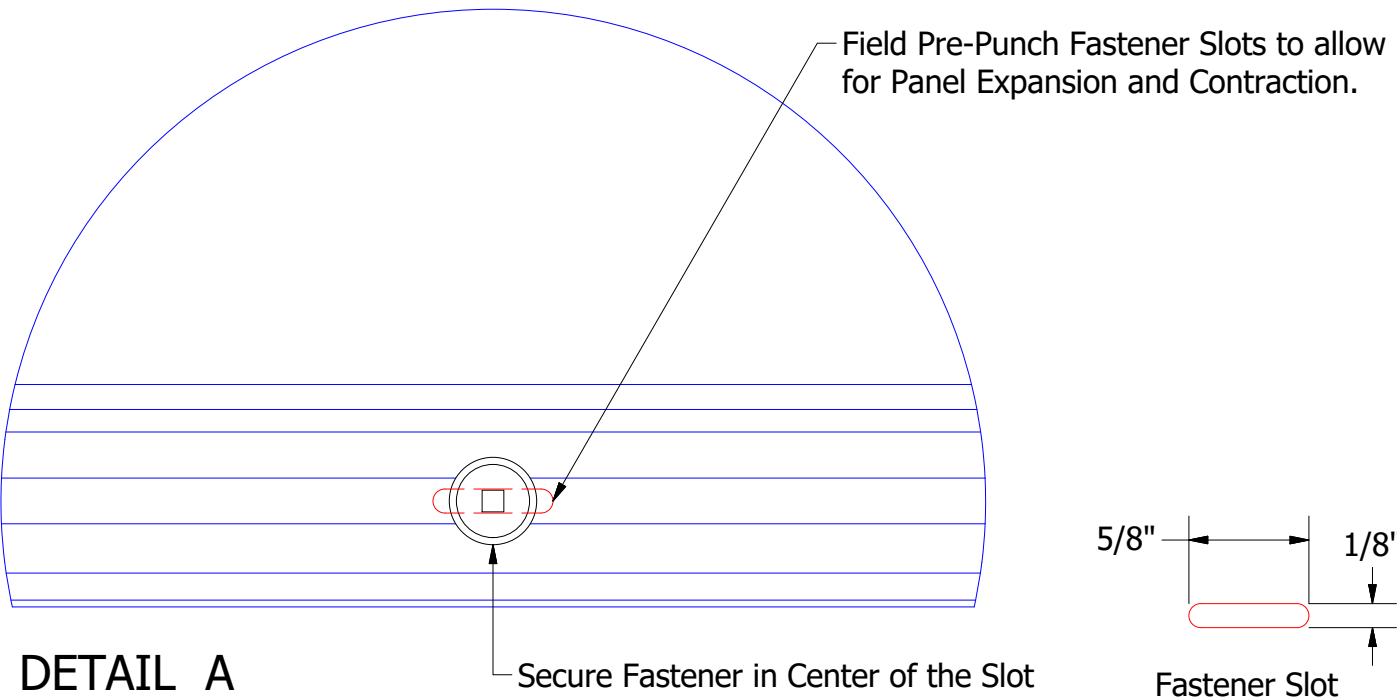
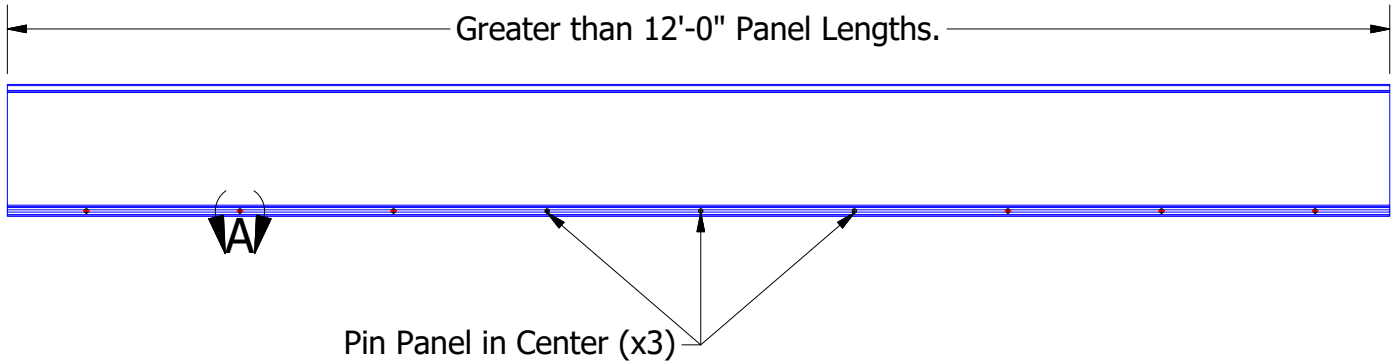


Minimum Length: 6'-0"
Maximum Length: 26'-0"

					TITLE		
					Design Wall Panel Profile Detail		
					DWG. NO.	DR KRK	DATE 7/26/2016
						APP DAS	DATE 7/26/2016
REV. NO.	DATE	DESCRIPTION OF REVISION	BY	APP	MATERIAL		
					SH. SIZE	B	SCALE X:X



ATAS INTERNATIONAL, INC
Allentown PA
610-395-8445
Mesa AZ
480-558-7210

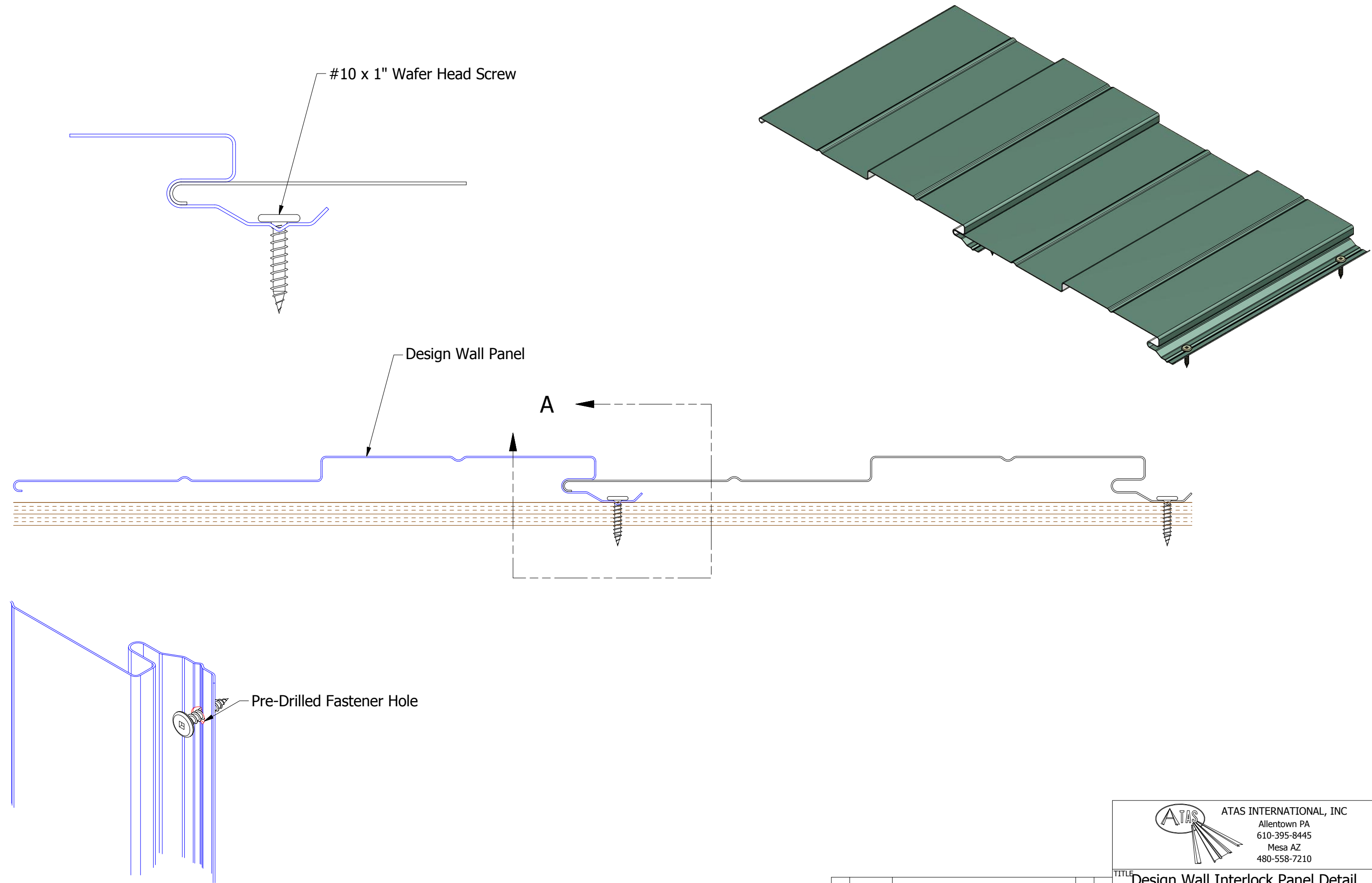


ATAS INTERNATIONAL, INC
 Allentown PA
 610-395-8445
 Mesa AZ
 480-558-7210

TITLE **Design Wall Fastener Slots Detail**

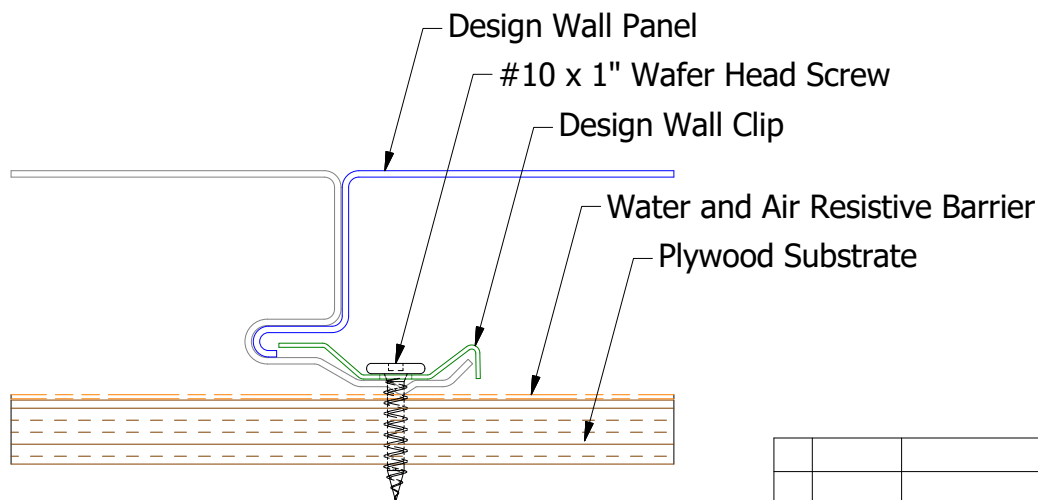
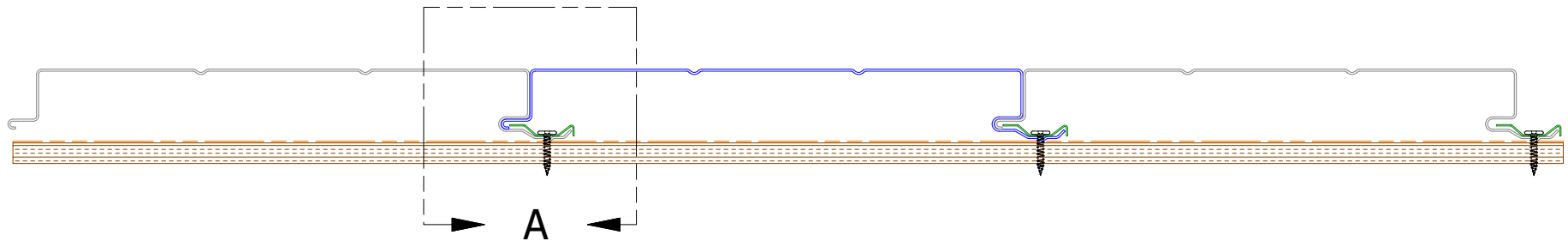
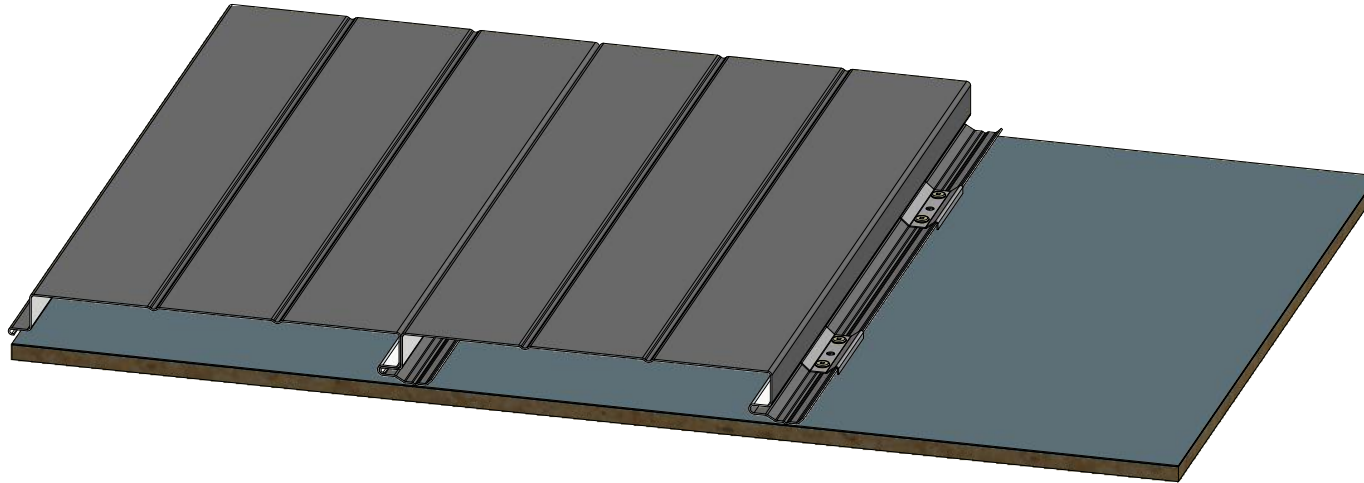
REV. NO.	DATE	DESCRIPTION OF REVISION	BY	APP

DWG. NO.	DR DMR	DATE 5/12/2021
MATERIAL	APP	DATE
SH. SIZE A	SCALE	X:X

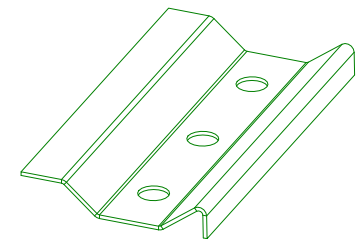


Pre-Drill Fastener Holes for Panels Greater than 20'-0" in Length.

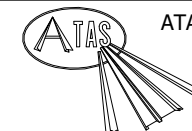
						Design Wall Interlock Panel Detail		
						DWG. NO.	DR DMR	DATE 10/4/2016
						MATERIAL	APP	DATE
REV. NO.	DATE	DESCRIPTION OF REVISION		BY	APP	SH. SIZE B	SCALE X:X	



DETAIL A



Design Wall Clip

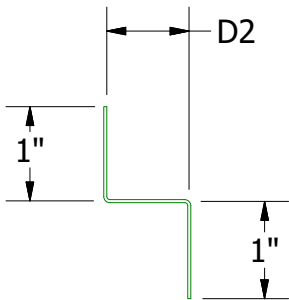
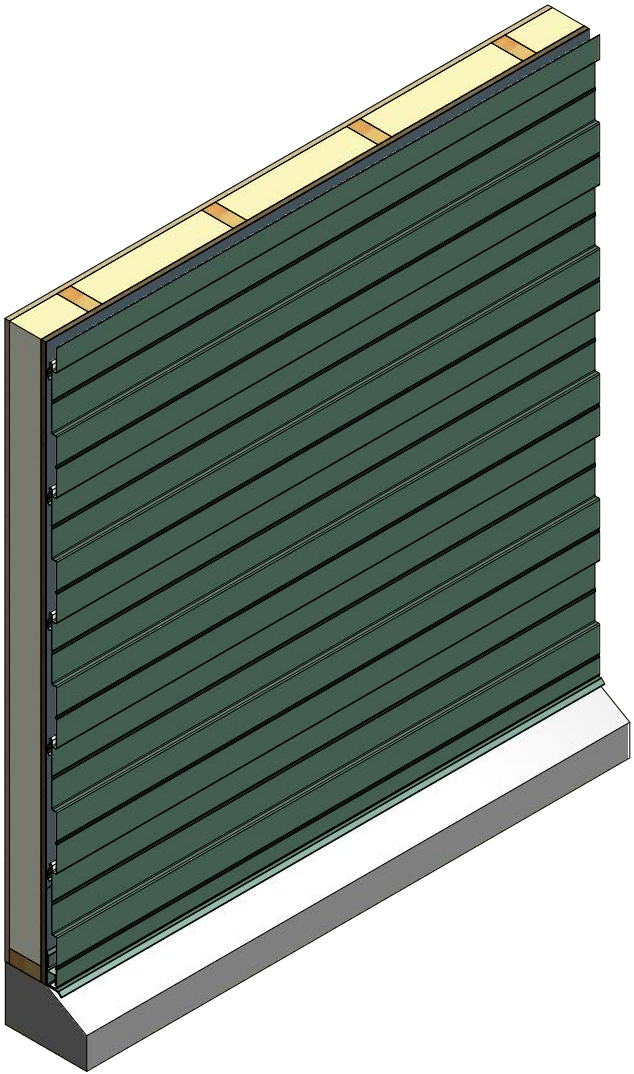
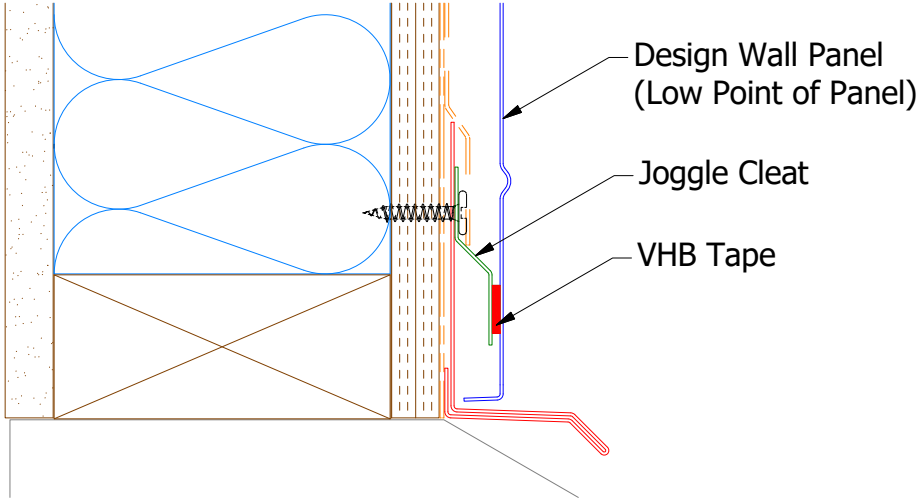
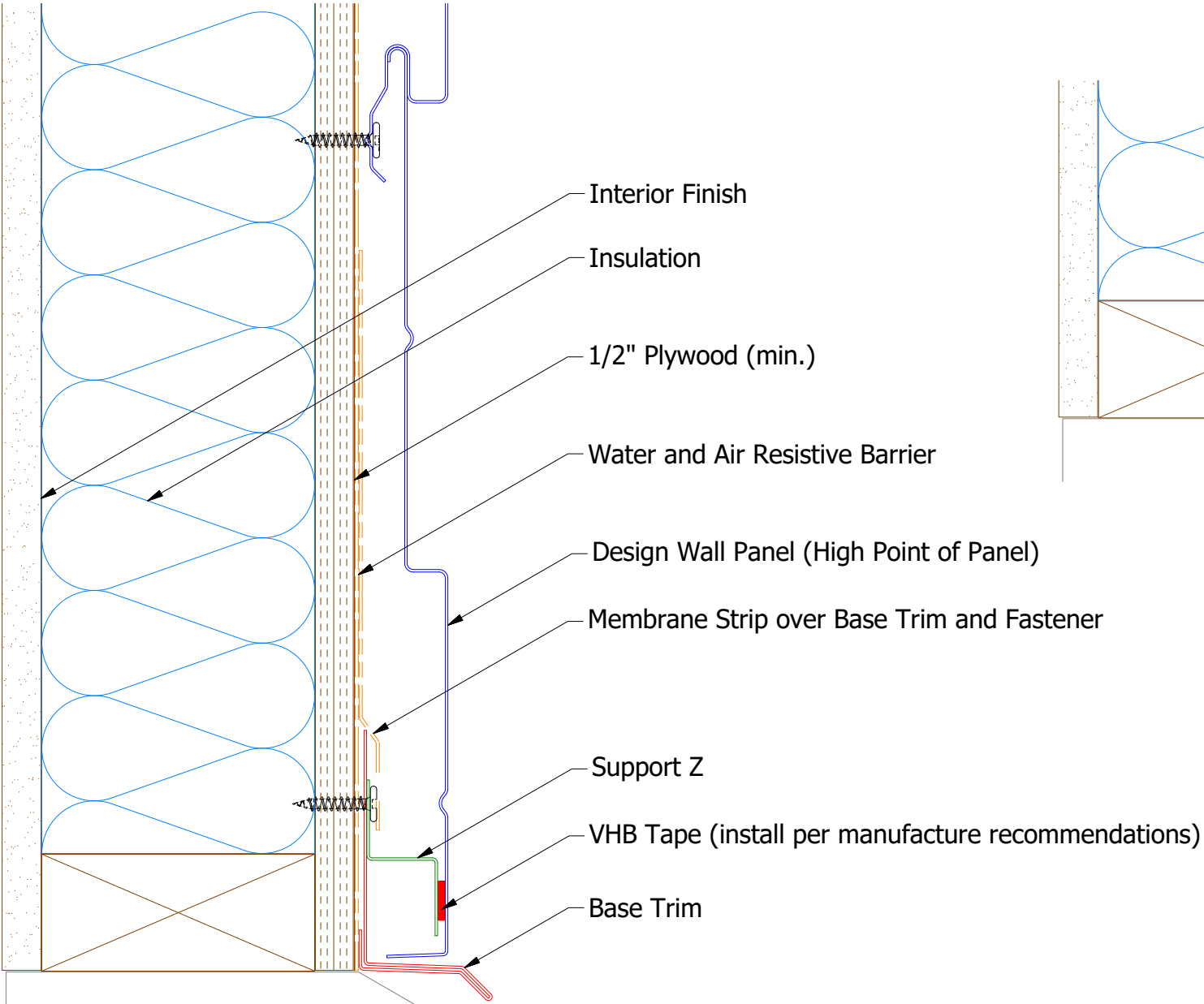


ATAS INTERNATIONAL, INC
Allentown PA
610-395-8445
Mesa AZ
480-558-7210

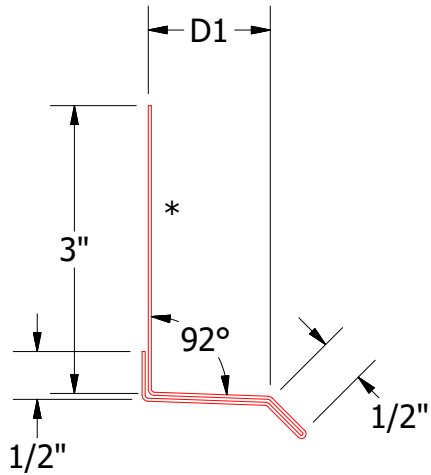
TITLE		Design Wall Clip Detail	
DWG. NO.		DR	DATE
		KRK	3/18/2021
MATERIAL		APP	DATE
		SH. SIZE	SCALE
		A	X:X

REV. NO.	DATE	DESCRIPTION OF REVISION	BY	APP

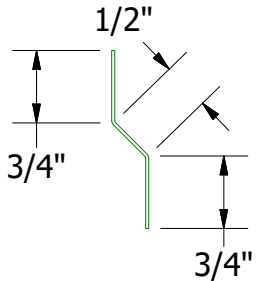
Horizontal Panel



Support Z
DWA681: D2=1"
DSA681:D2=1 5/8"




Base Trim
DWA661: D1=1 1/4"
DSA661: D1=2"

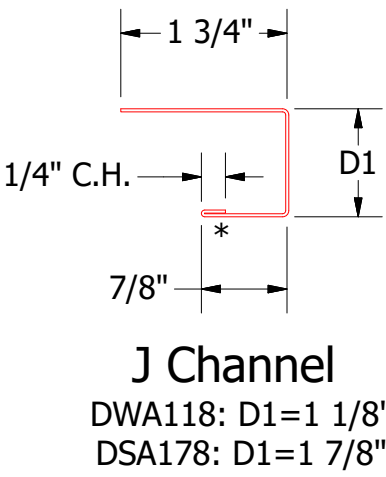
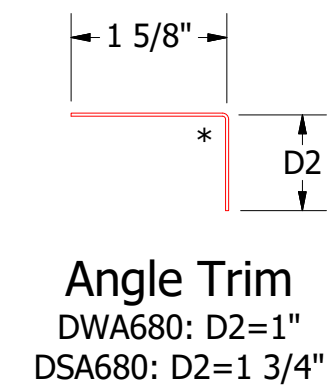
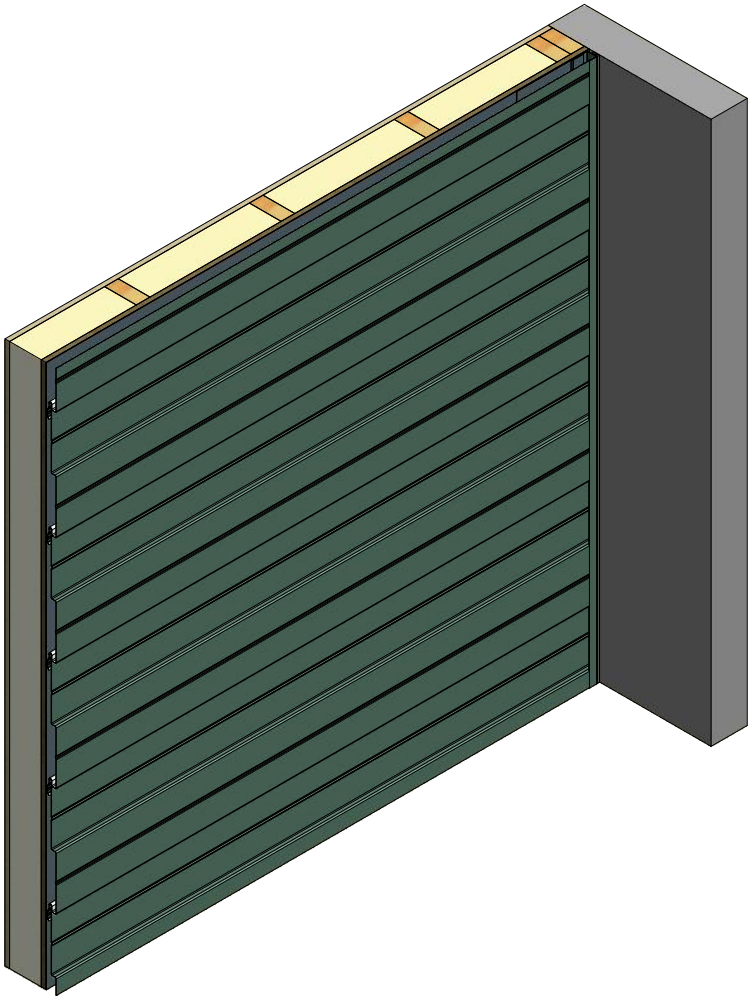
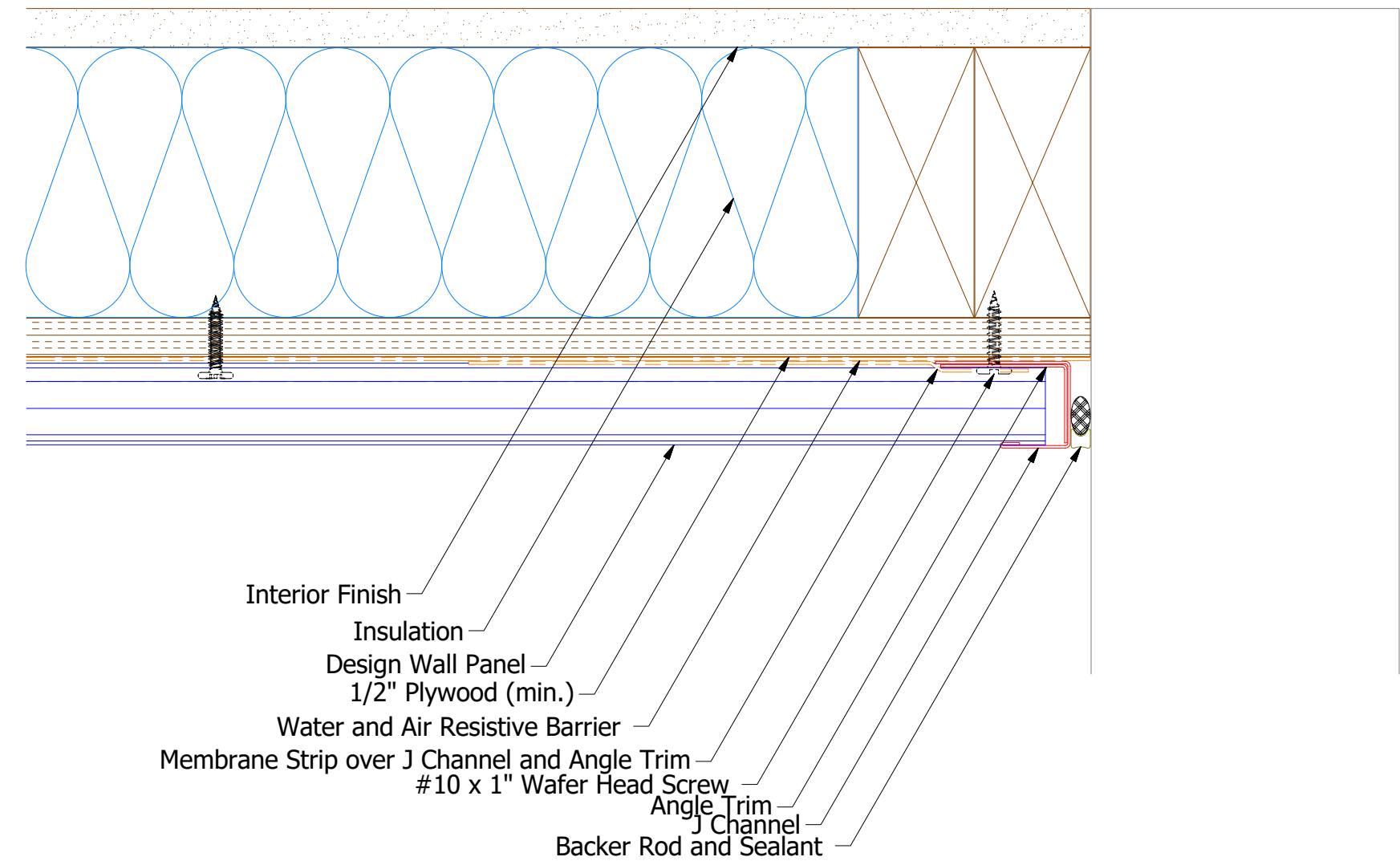


DWA975/DSA975 - Joggle Cleat

Note: * denotes color side.
Note: stainless steel pop rivets maybe needed along with VHB tape for longer panels.

<div>DWA661: D1=1 1/4"</div> <div>DSA661: D1=2"</div>					<div><div></div><div>ATAS INTERNATIONAL, INC</div><div>Allentown PA</div><div>610-395-8445</div><div>Mesa AZ</div><div>480-558-7210</div></div>				
					TITLE				
					Design Wall Base Detail				
					DWG. NO.			DR	DATE
								DMR	6/23/2016
1	7/13/2021	Changed Pop Rivets to VHB Tape	DMR		MATERIAL			APP	DATE
								DAS	7/25/16
REV. NO.	DATE	DESCRIPTION OF REVISION	BY	APP				SH. SIZE	SCALE
								B	X:X

Horizontal Panel

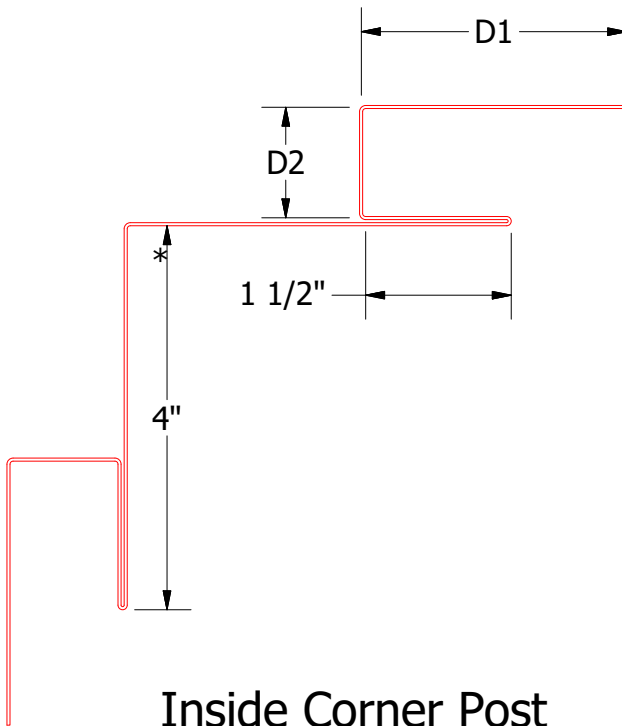
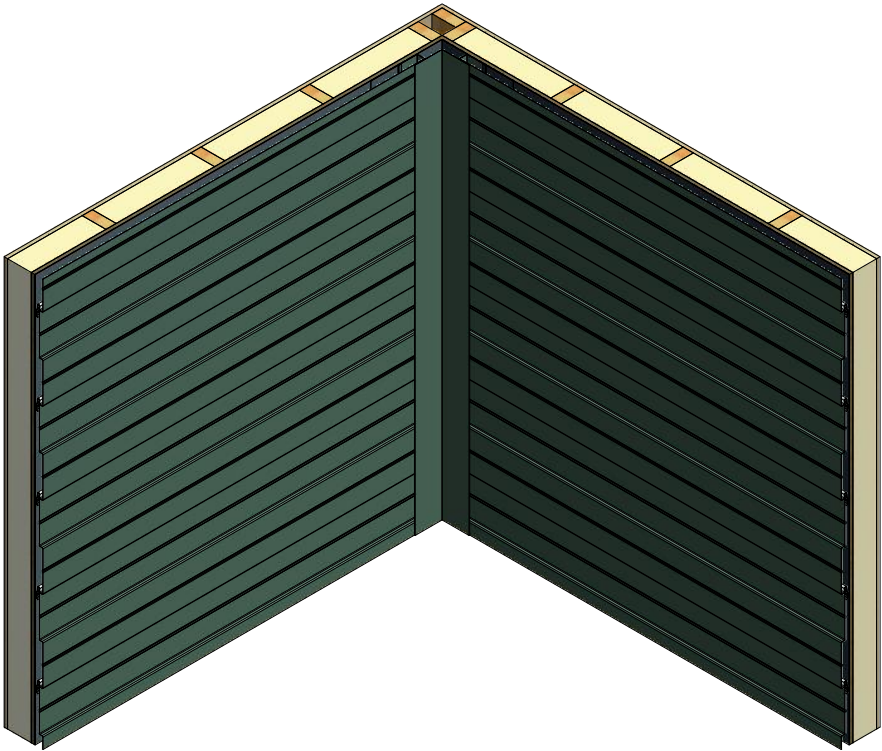
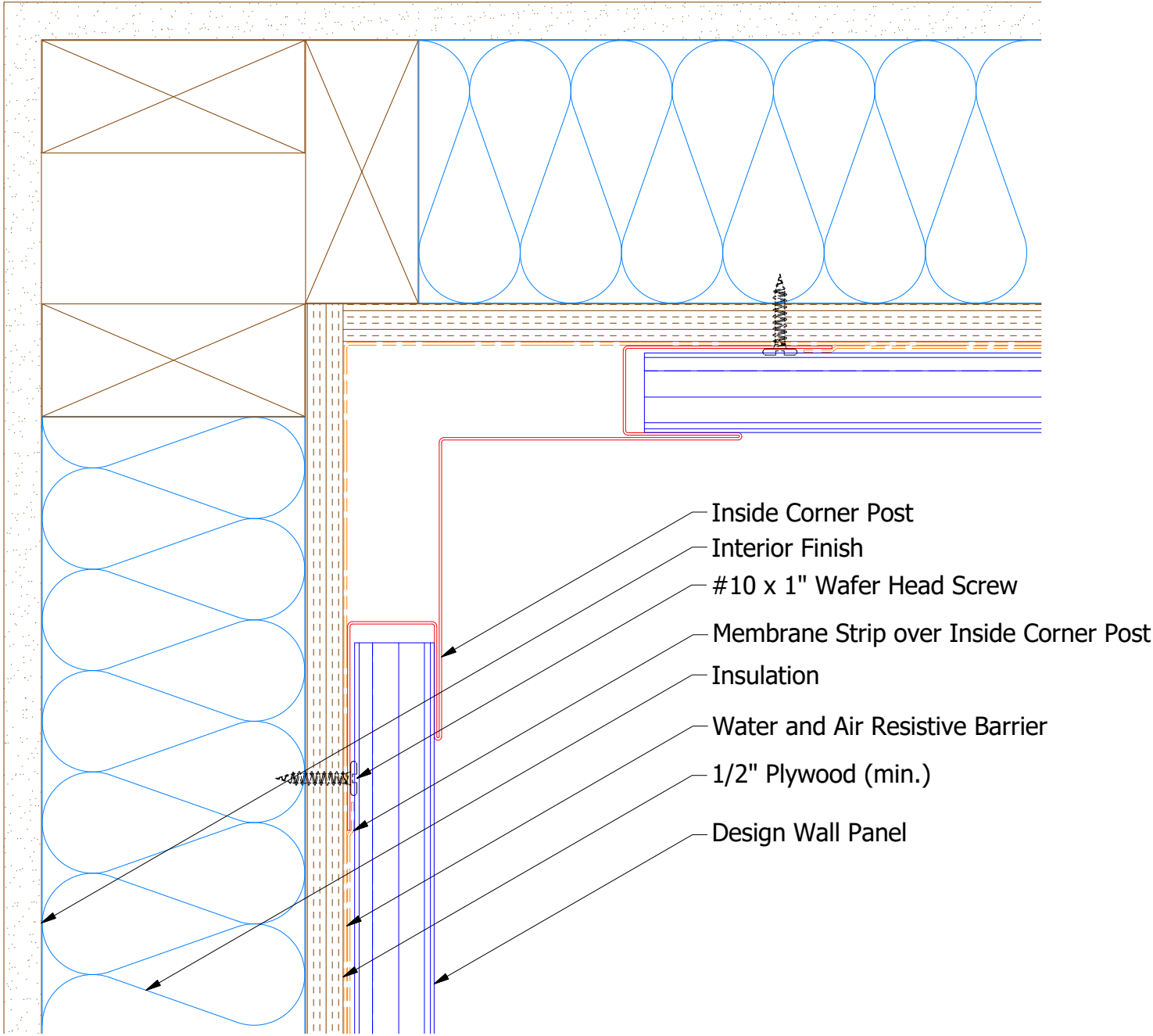


Note: * denotes color side.

TITLE			
Design Wall Endwall Detail			
REV. NO.	DATE	DESCRIPTION OF REVISION	BY
1	7/13/2021	Changed Pop Rivets to VHB Tape	DMR

DWG. NO.		DR	DATE
		DMR	6/23/2016
MATERIAL		APP	DATE
		DAS	7/25/16
SH. SIZE		B	SCALE
			X:X

Horizontal Panel

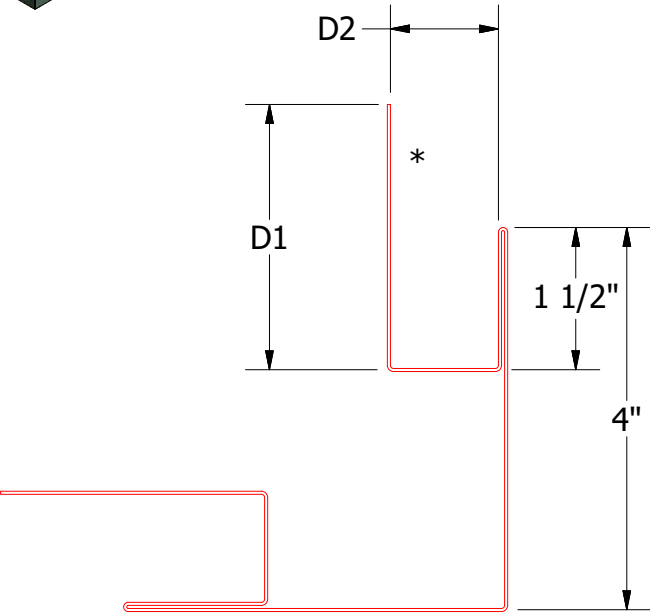
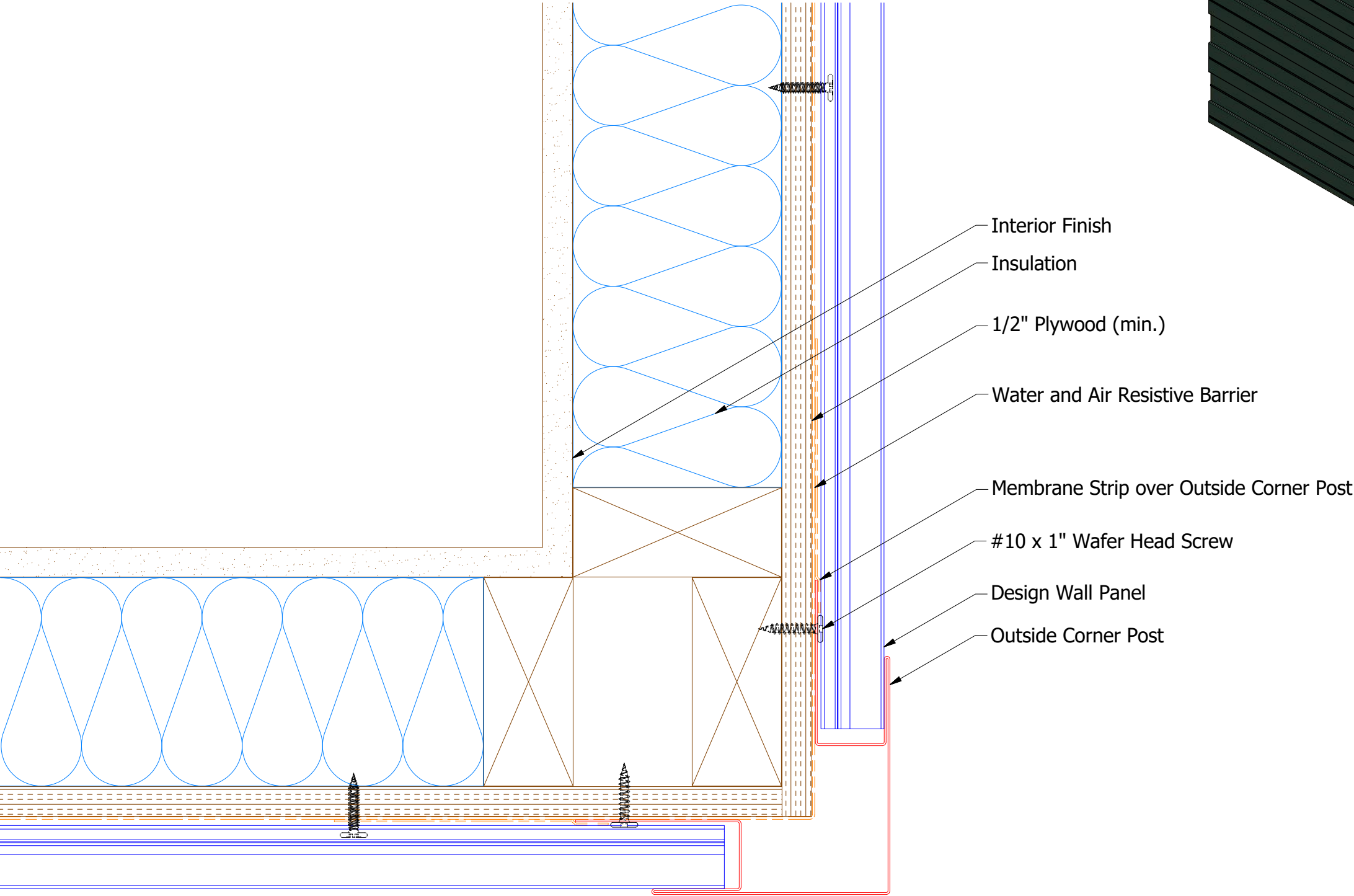
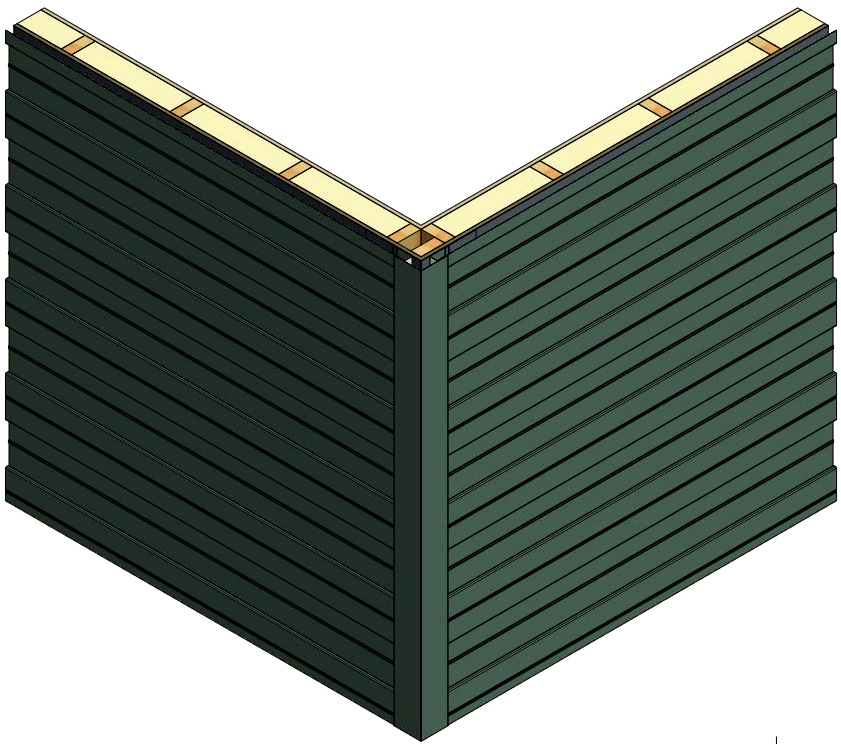


Inside Corner Post
DWA601: D1= 2 3/4; D2= 1 1/8"
DSA601: D1= 3; D2= 1 7/8"

Note: * denotes color side.

						TITLE	
						Design Wall Inside Corner Detail	
						DWG. NO.	
						DR	
						DATE	
						APP	
						DATE	
						MATERIAL	
						SH. SIZE	
						SCALE	
						B	
						X:X	

Horizontal Panel



Outside Corner Post
DWA602: D1= 2 3/4; D2= 1 1/8"
DSA602: D1= 3; D2= 1 7/8"

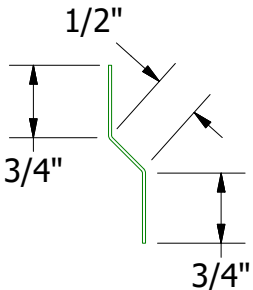
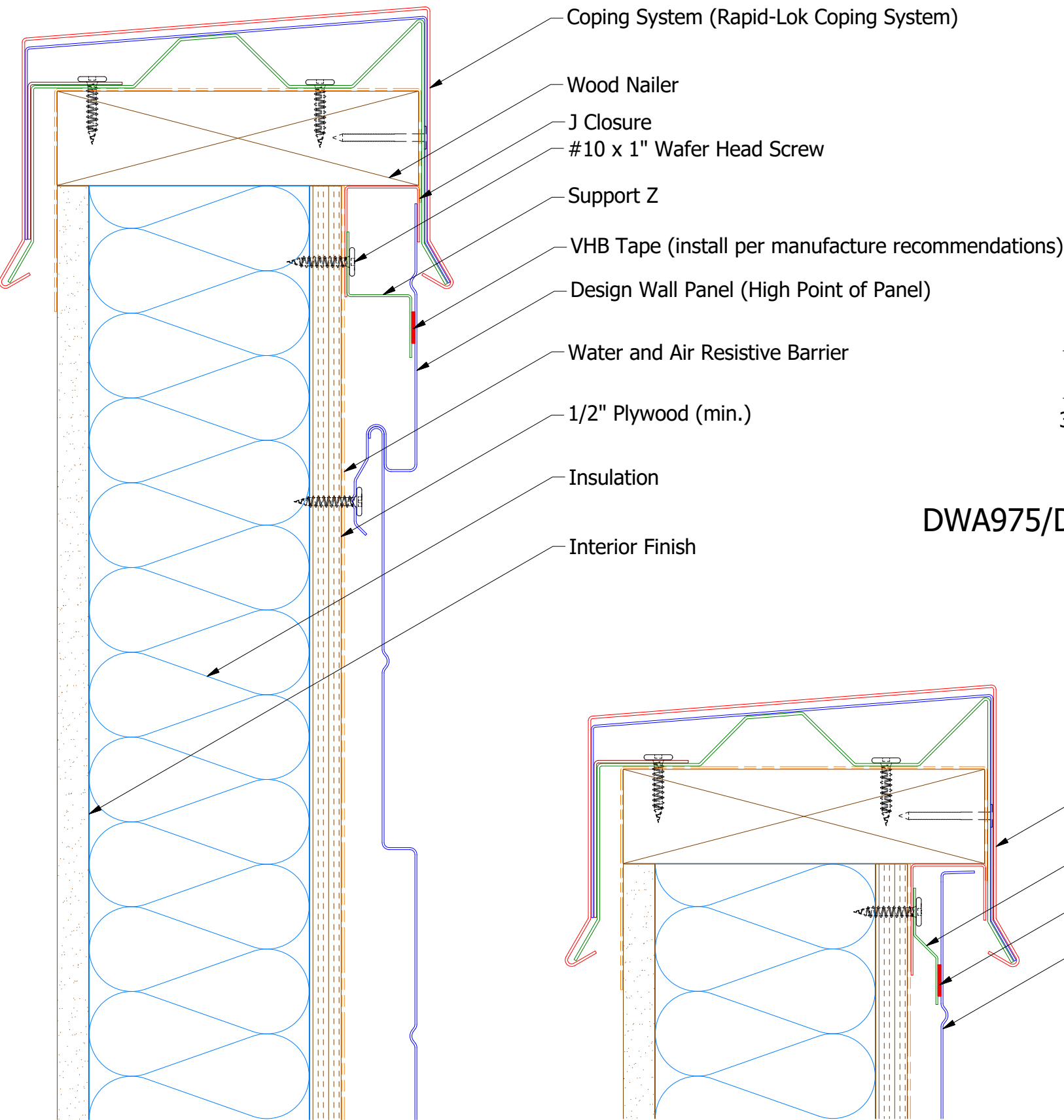
Note: * denotes color side.

						TITLE	
						Design Wall Outside Corner Detail	
REV. NO.	DATE	DESCRIPTION OF REVISION	BY	APP	DWG. NO.		DR
							DMR
					MATERIAL		APP
01	7/19/2021	Changed Pop Rivets to VHB Tape	DMR				DAS
						SH. SIZE	B
						SCALE	X:X
						DATE	6/28/2016
						DATE	7/26/16

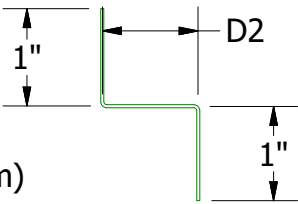
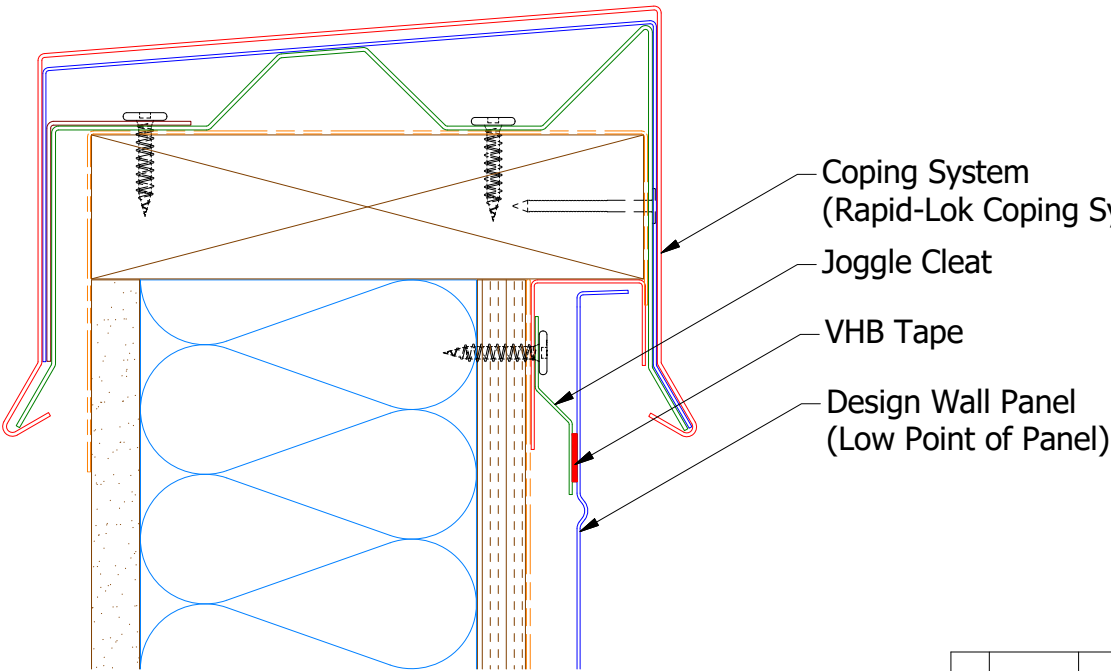
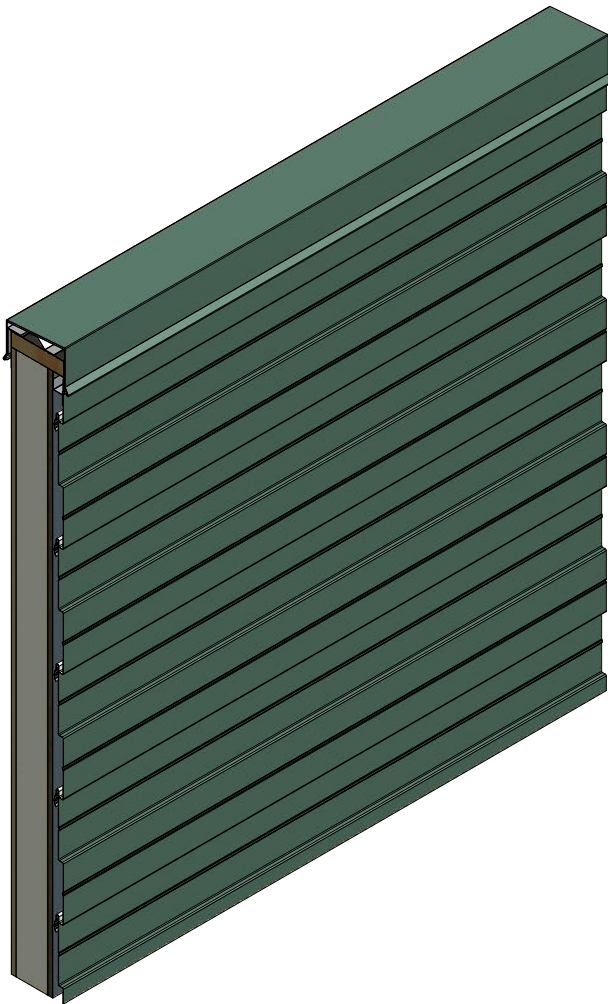


ATAS INTERNATIONAL, INC
Allentown PA
610-395-8445
Mesa AZ
480-558-7210

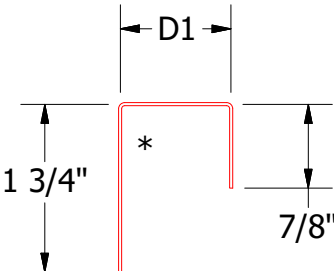
Horizontal Panel



DWA975/DSA975 - Joggle Cleat



Support Z
DWA681: D2= 1"
DSA681: D2= 1 5/8"

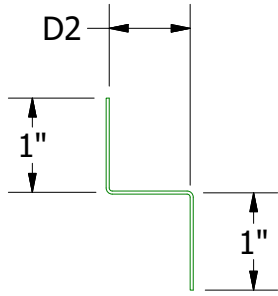
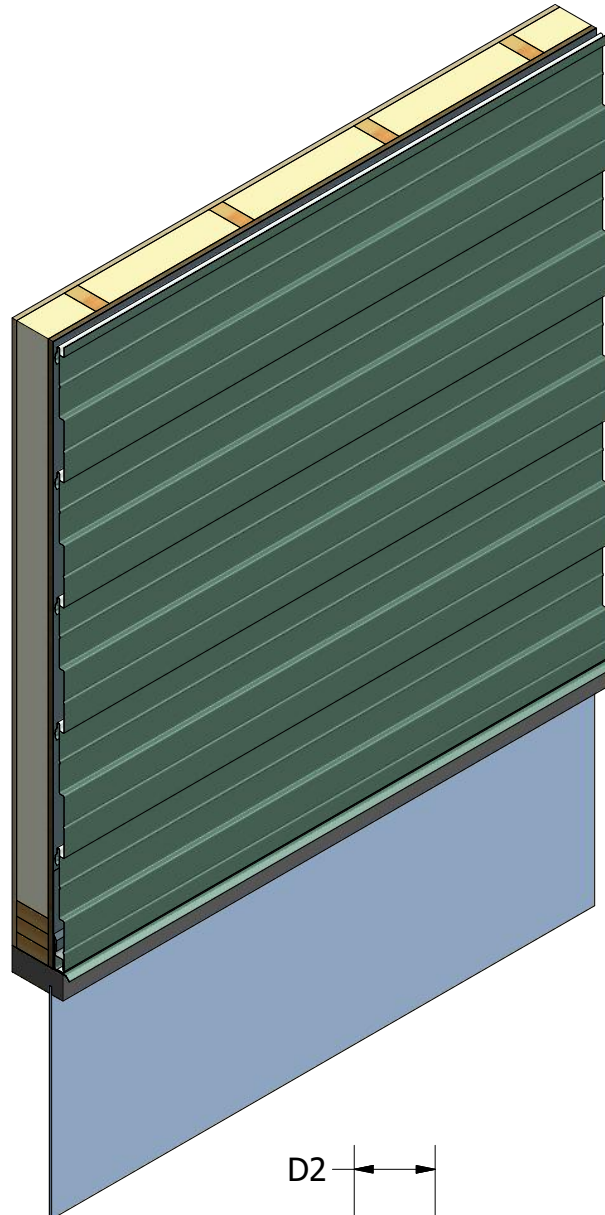
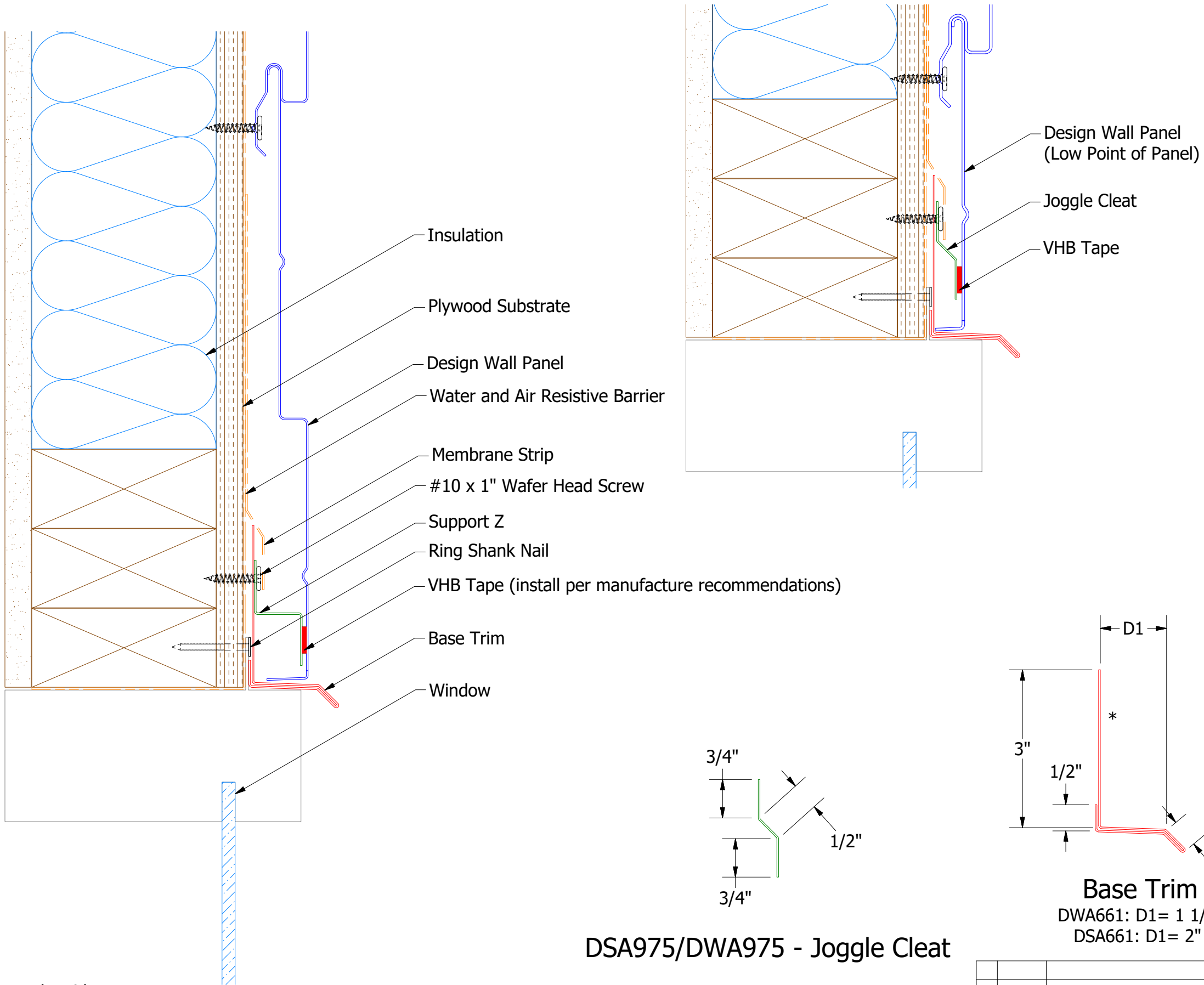


J Closure
DWA270: D1= 1 1/8"
DSA270: D1= 1 7/8"

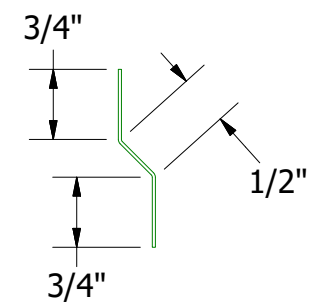
Note: * denotes color side.
Note: stainless steel pop rivets maybe needed along with VHB tape for longer panels.

				ATAS INTERNATIONAL, INC Allentown PA 610-395-8445 Mesa AZ 480-558-7210			
				ATAS			
				TITLE Design Wall Top of Wall Detail			
				DWG. NO.		DR	DATE
						DMR	6/30/2016
				MATERIAL		APP	DATE
						DAS	7/26/16
						SH. SIZE	SCALE
						B	X:X

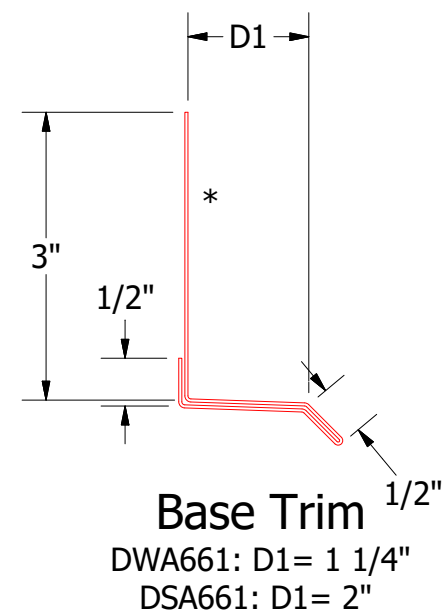
Horizontal Panel



Support Z
DWA681: D2=1"
DSA681:D2=1 5/8"



DSA975/DWA975 - Joggle Cleat



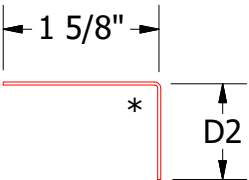
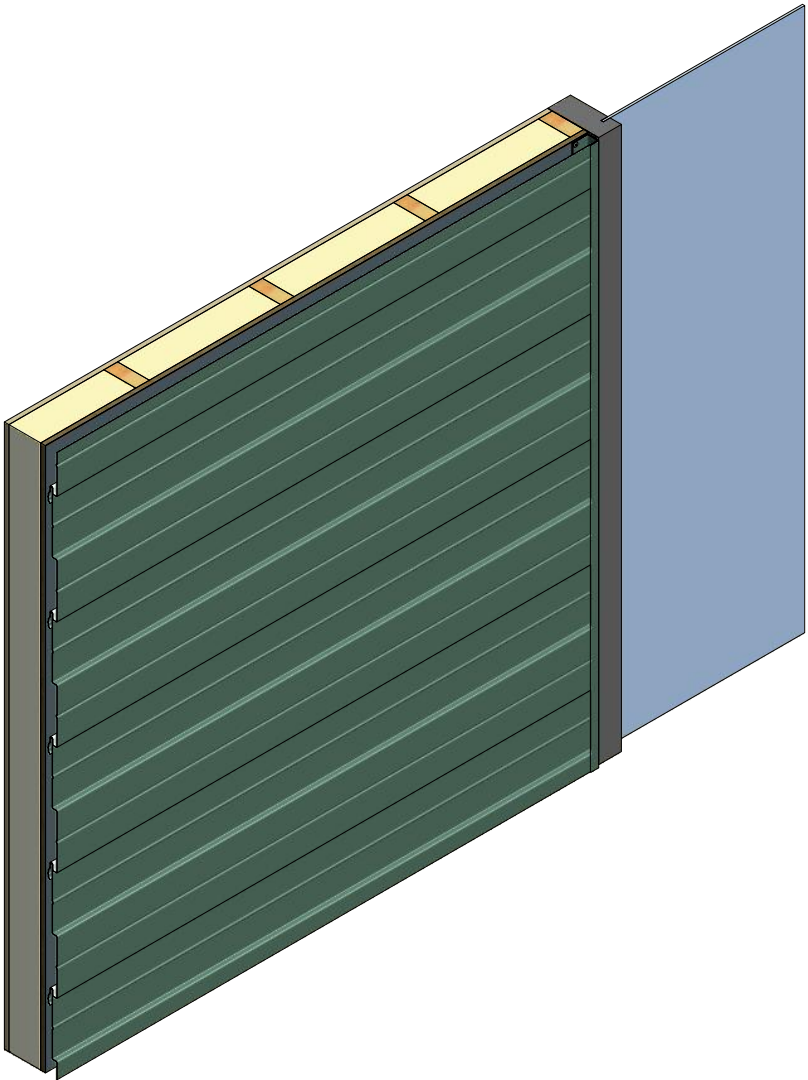
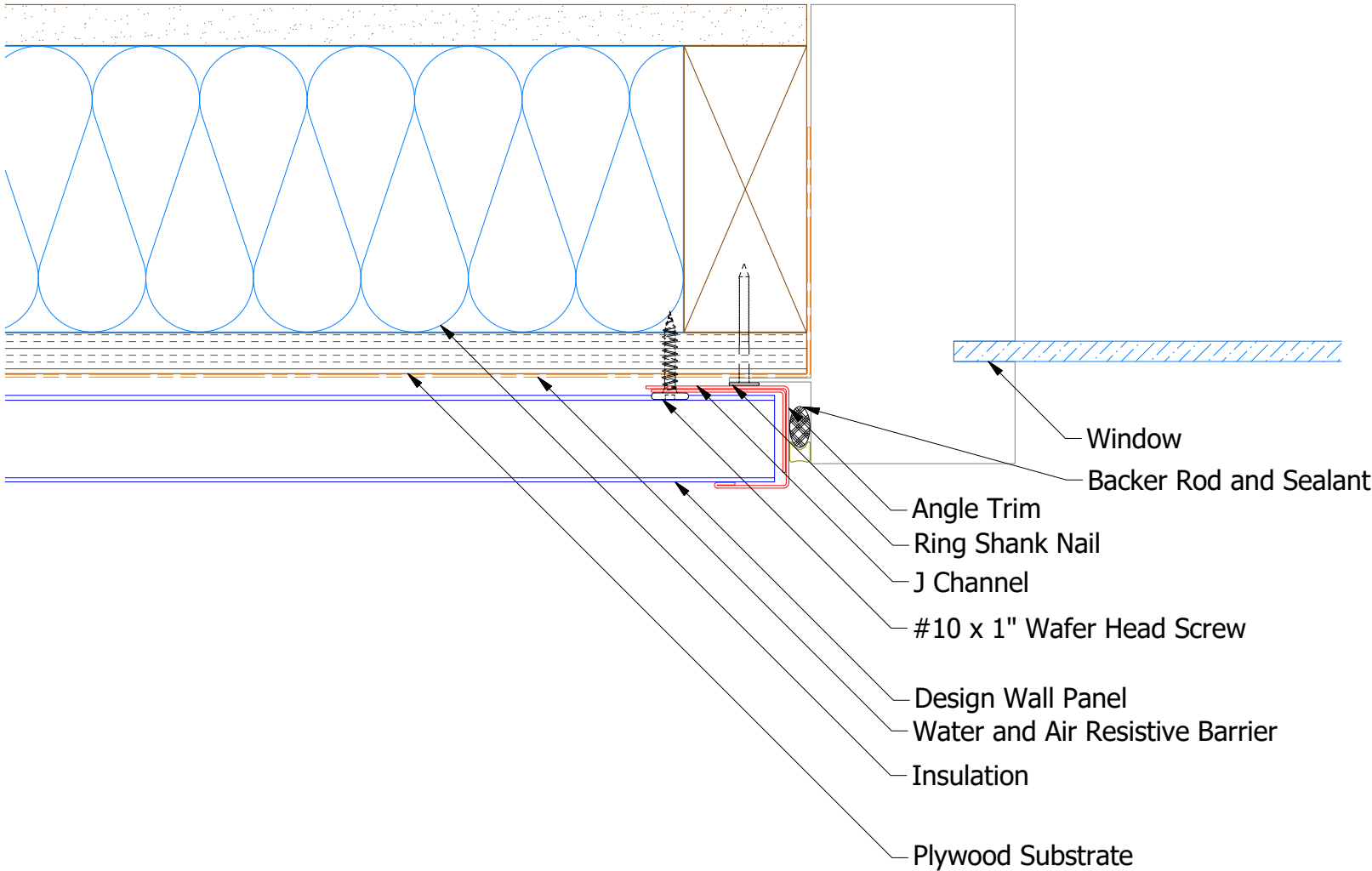
Note: * denotes color side.
Note: stainless steel pop rivets maybe needed along with VHB tape for longer panels.

				TITLE Design Wall Head Window Flange Detail			
REV. NO.	DATE	DESCRIPTION OF REVISION	BY	APP	DWG. NO.		DR
					MATERIAL		MBP
1	7/16/2021	Changed Pop Rivets to VHB Tape	DMR				DATE
							DATE
							SH. SIZE
							B
							SCALE
							X:X

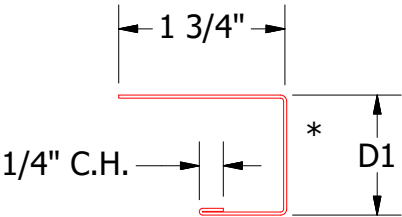


ATAS INTERNATIONAL, INC
Allentown PA
610-395-8445
Mesa AZ
480-558-7210

Horizontal Panel



Angle Trim
DWA680: D2= 1"
DSA680: D2= 1 3/4"



J Channel
DWA118: D1= 1 1/8"
DSA178: D1= 1 7/8"

Note: * denotes color side.

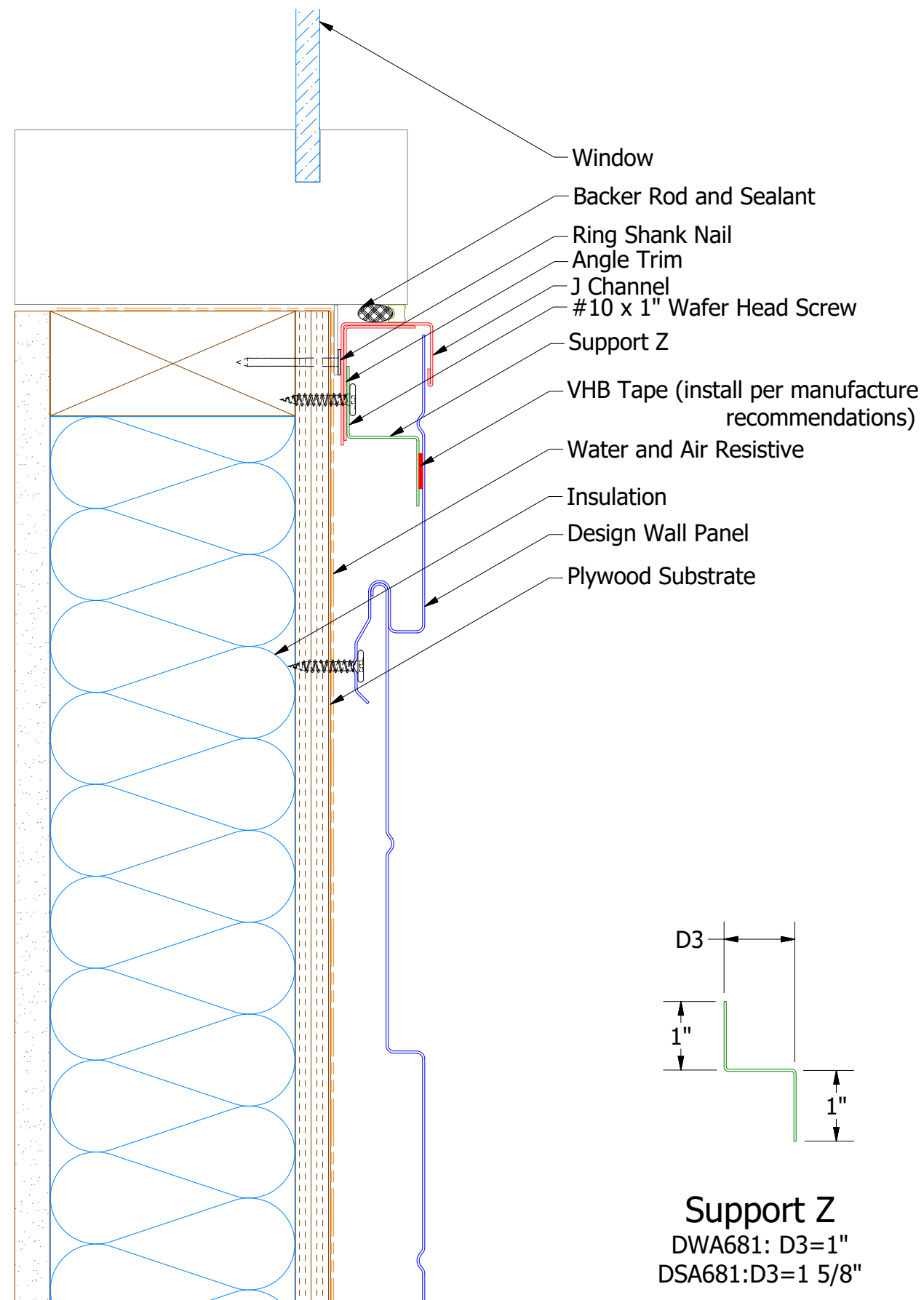
REV. NO.				TITLE			
02	7/19/2021	Changed Pop Rivets to VHB Tape	DMR	Design Wall Jamb Window Flange Detail			
01	11/6/2019	Updated SKU # for Angle Trim	KRK				
REV. NO.	DATE	DESCRIPTION OF REVISION	BY	APP			

DWG. NO.		DR	MBP	DATE
		APP		7/27/2018
MATERIAL		SH. SIZE	B	SCALE
				X:X



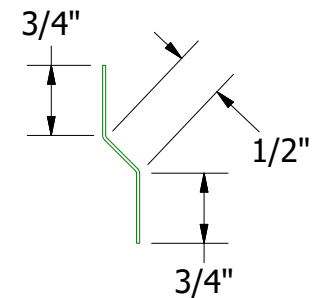
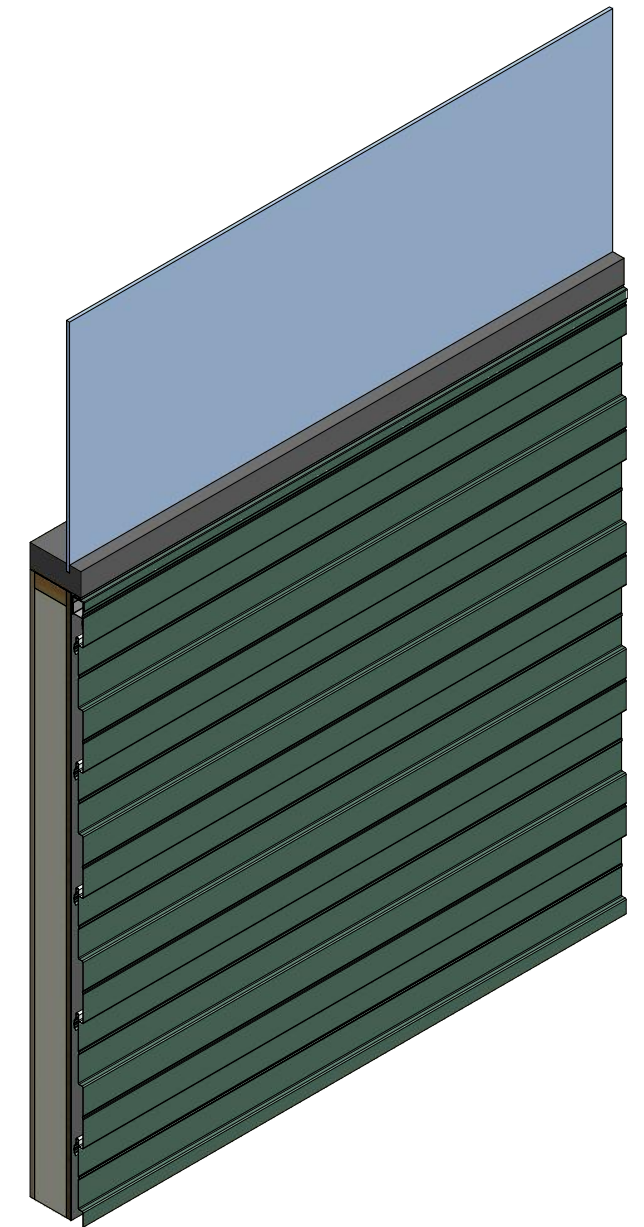
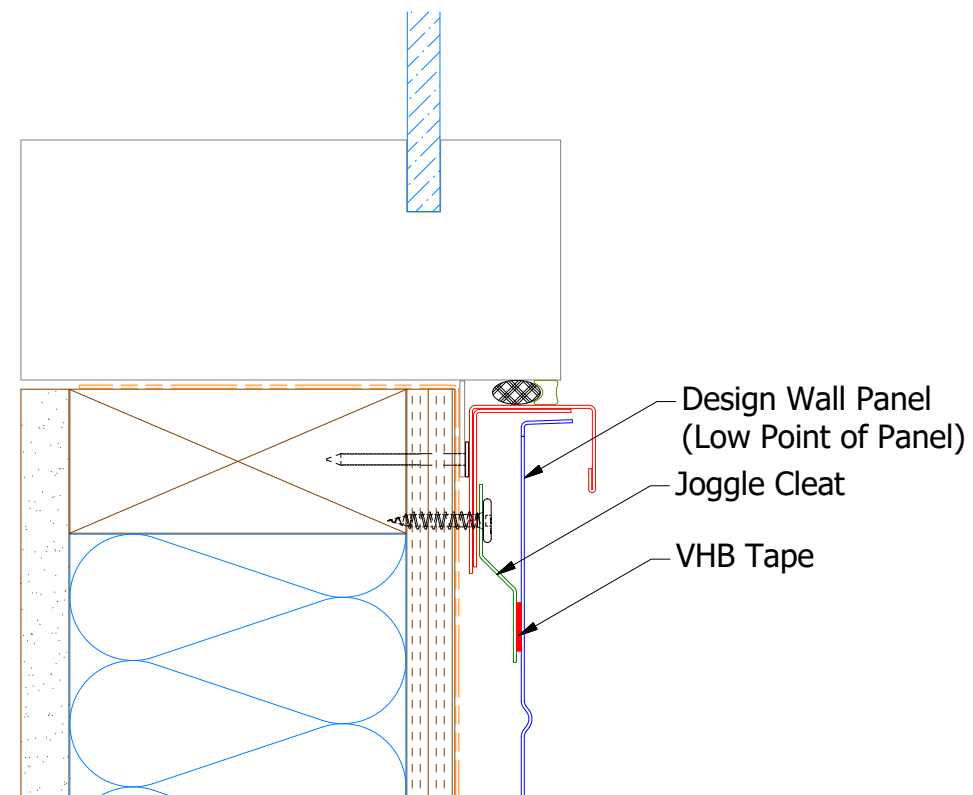
ATAS INTERNATIONAL, INC
Allentown PA
610-395-8445
Mesa AZ
480-558-7210

Horizontal Panel

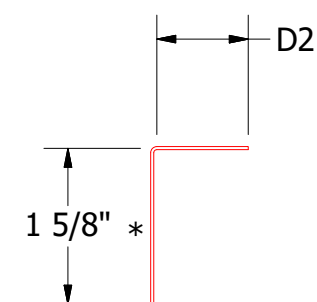


Note: * denotes color side.

Note: stainless steel pop rivets maybe needed along with VHB tape for longer panels.



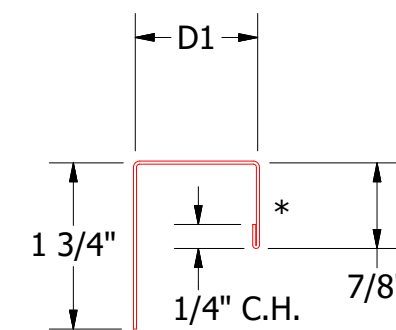
DSA975/DWA975 - Joggle Cleat



Angle Trim

DWA680: D2= 1"

DSA680: D2= 1 3/4"



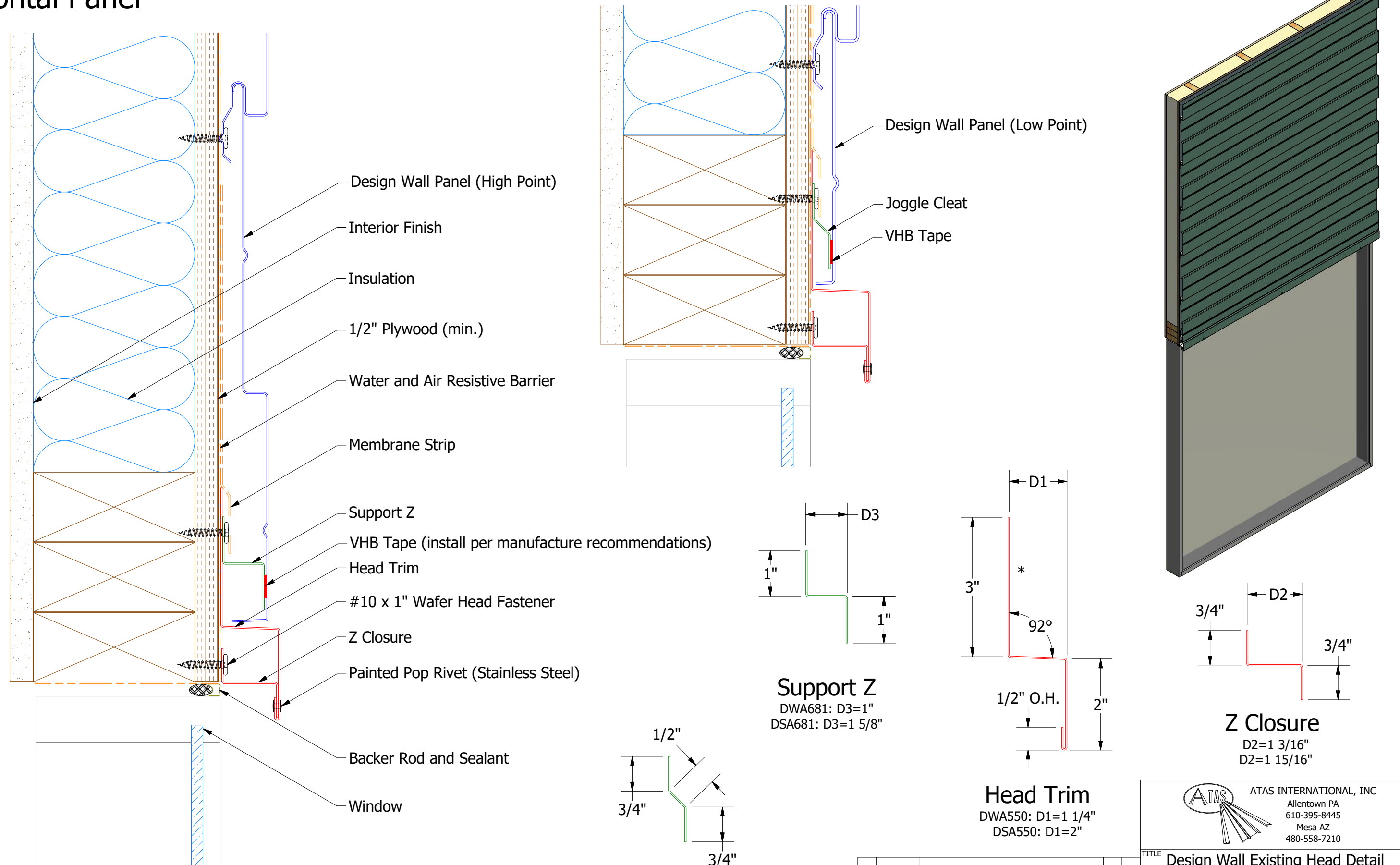
J Channel

DWA118: D1= 1 1/8"

DSA178: D1= 1 7/8"

TITLE					Design Wall Window Sill Flange Detail				
02	7/22/2021	Changed Pop Rivets to VHB Tape	DMR		DWG. NO.	DR	MBP	DATE	7/27/2018
01	11/6/2019	Updated SKU # for Angle Trim	KRK			MATERIAL	APP		DATE
REV. NO.	DATE	DESCRIPTION OF REVISION	BY	APP		SH. SIZE	B	SCALE	X:X

Horizontal Panel



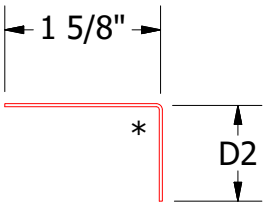
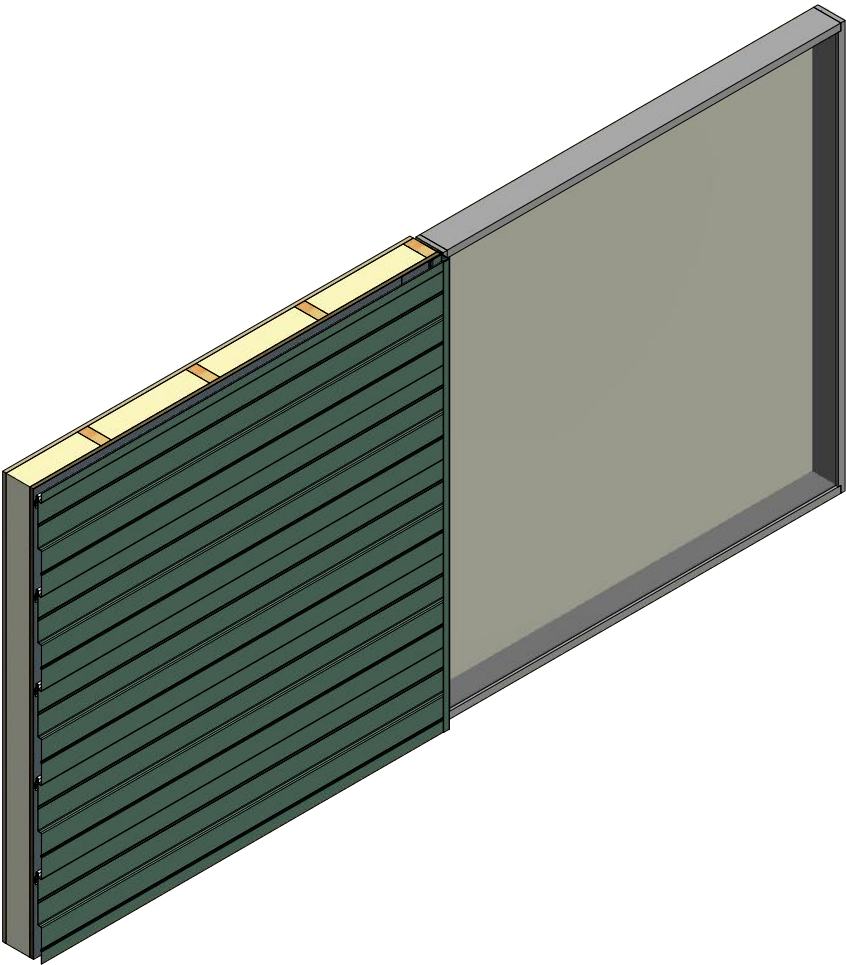
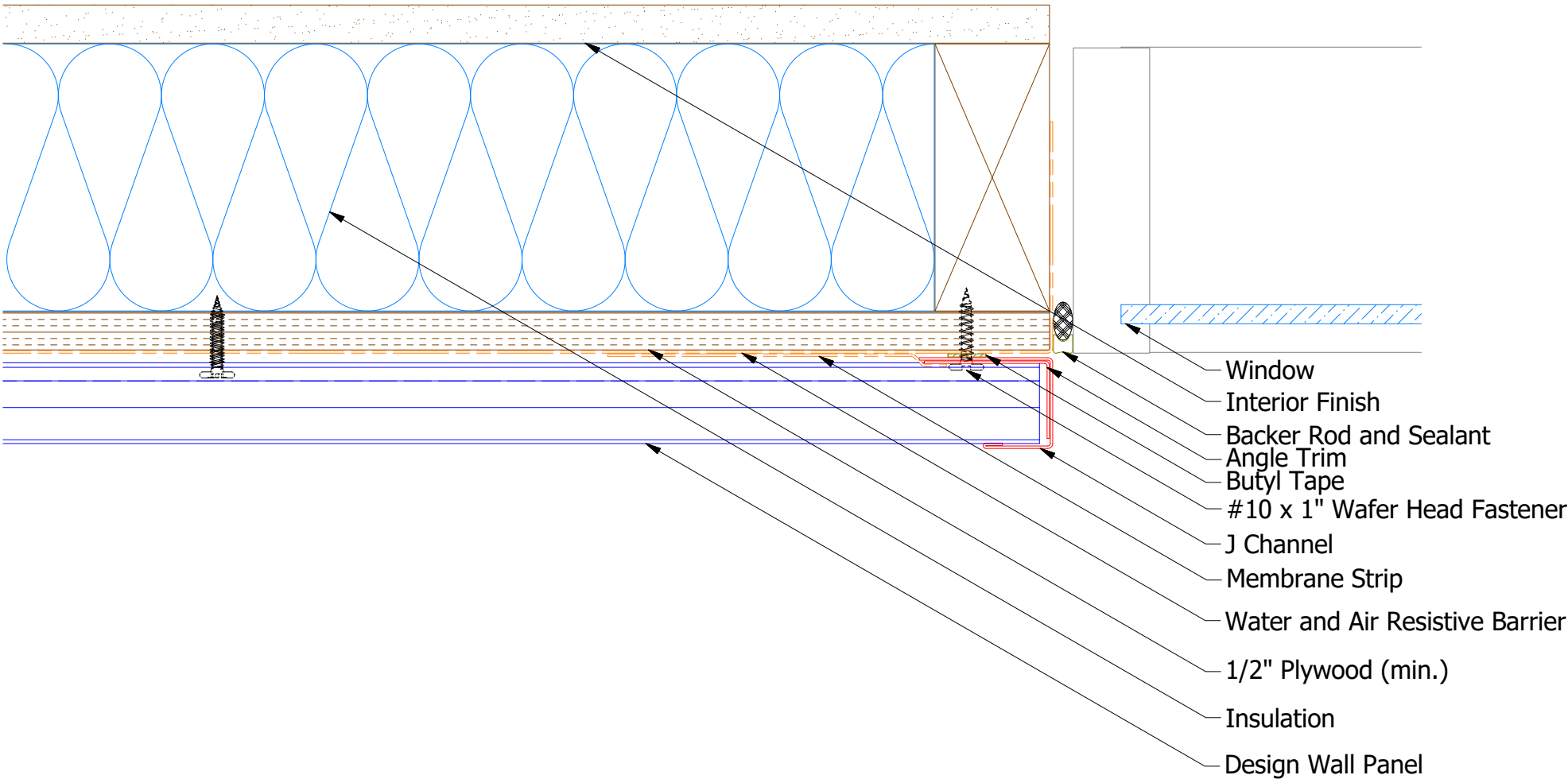
Note: * denotes color side.

Note: stainless steel pop rivets maybe needed along with VHB tape for longer panels.

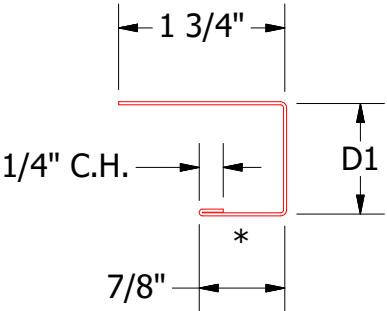
DSA975/ DWA975 - Joggle Cleat

					TITLE					Design Wall Existing Head Detail						
					DWG. NO.					DR		DATE				
										DMR		7/16/2018				
1					7/16/2021					Changed Pop Rivets to VHB Tape					DMR	
										MATERIAL					DATE	
REV. NO.					DATE					DESCRIPTION OF REVISION					BY APP	
										SH. SIZE					SCALE	
										B					X:X	

Horizontal Panel



Angle Trim
DWA680: D2=1"
DSA680: D2=1 1/2"

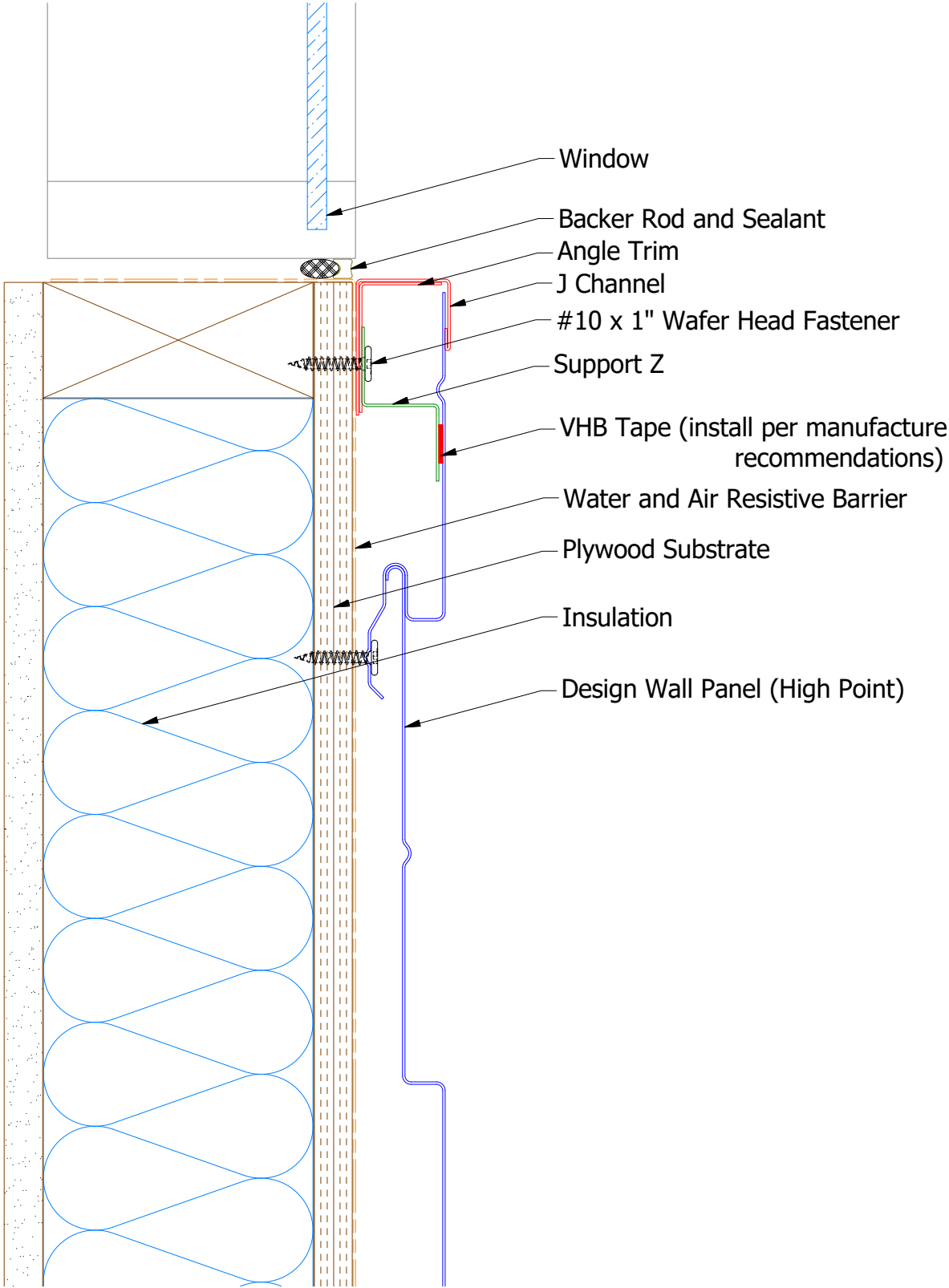


J Channel
DWA118: D1=1 1/8"
DSA178: D1=1 7/8"

Note: * denotes color side.

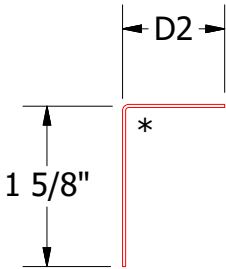
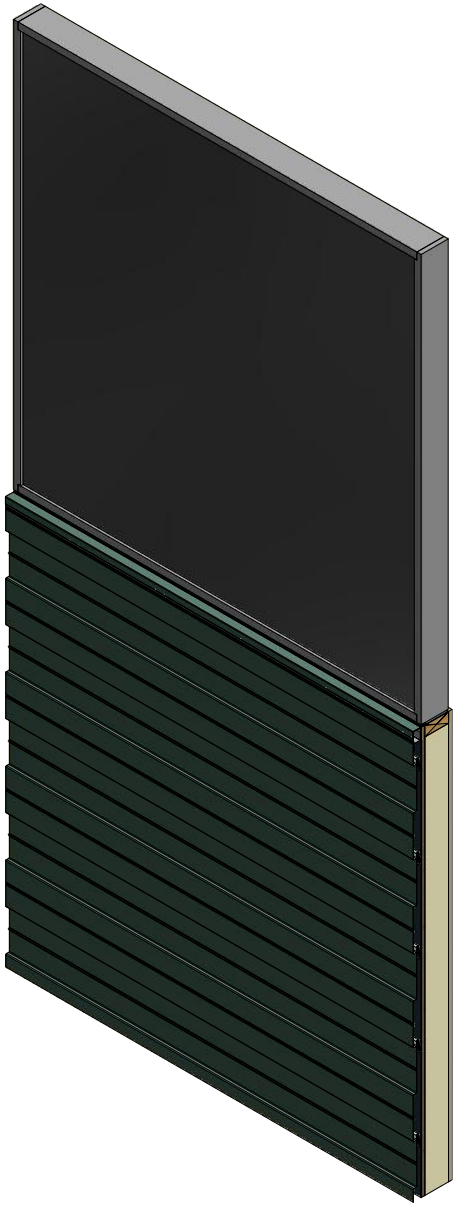
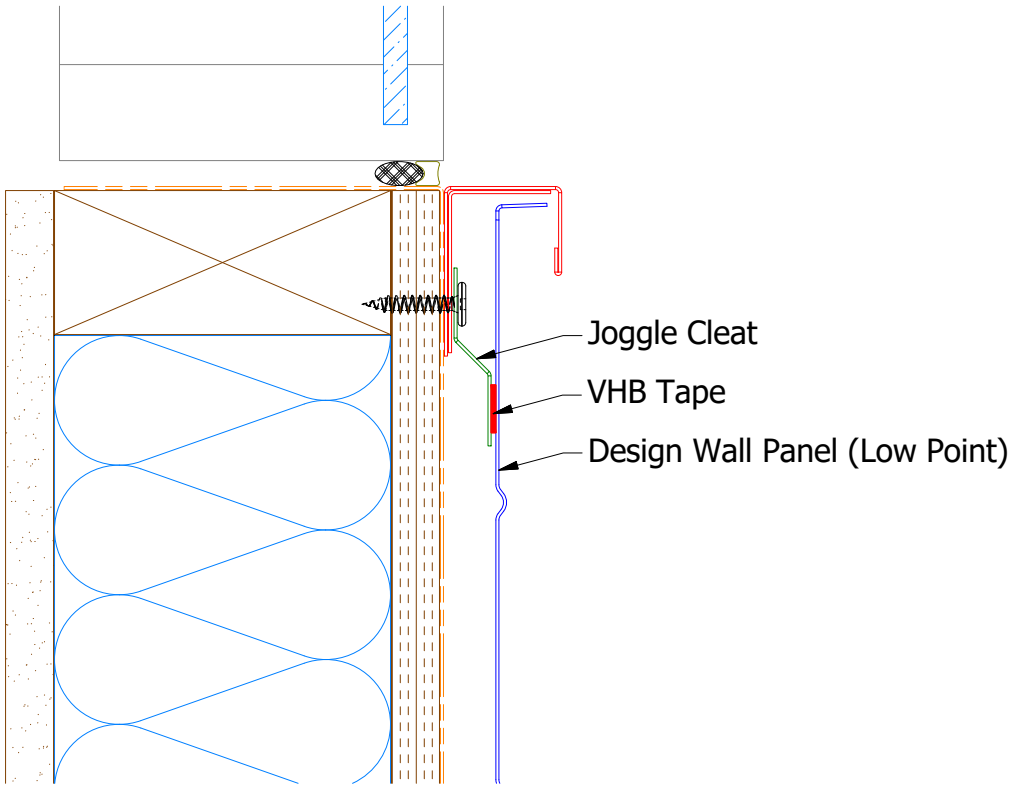
TITLE				Design Wall Existing Jamb Detail			
DWG. NO.		DR		DATE		DATE	
01		7/19/2021		DMR		7/17/2018	
REV. NO.		DATE		DESCRIPTION OF REVISION		BY APP	
01		7/19/2021		Changed Pop Rivets to VHB Tape		DMR	
MATERIAL		SH. SIZE		SCALE		X:X	
		B					

Horizontal Panel

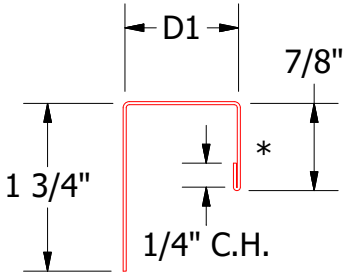


Note: * denotes color side.

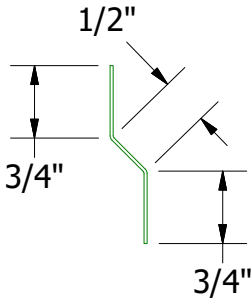
Note: stainless steel pop rivets maybe needed along with VHB tape for longer panels.



Angle Trim
DWA680: D2=1"
DSA680: D2=1 3/4"



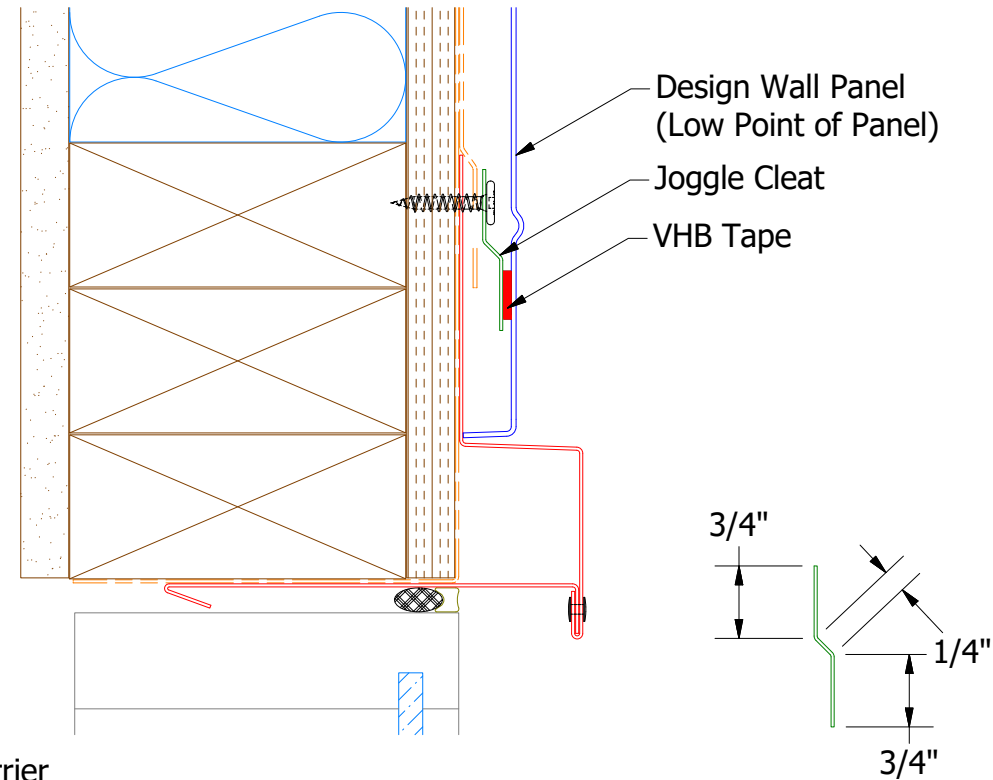
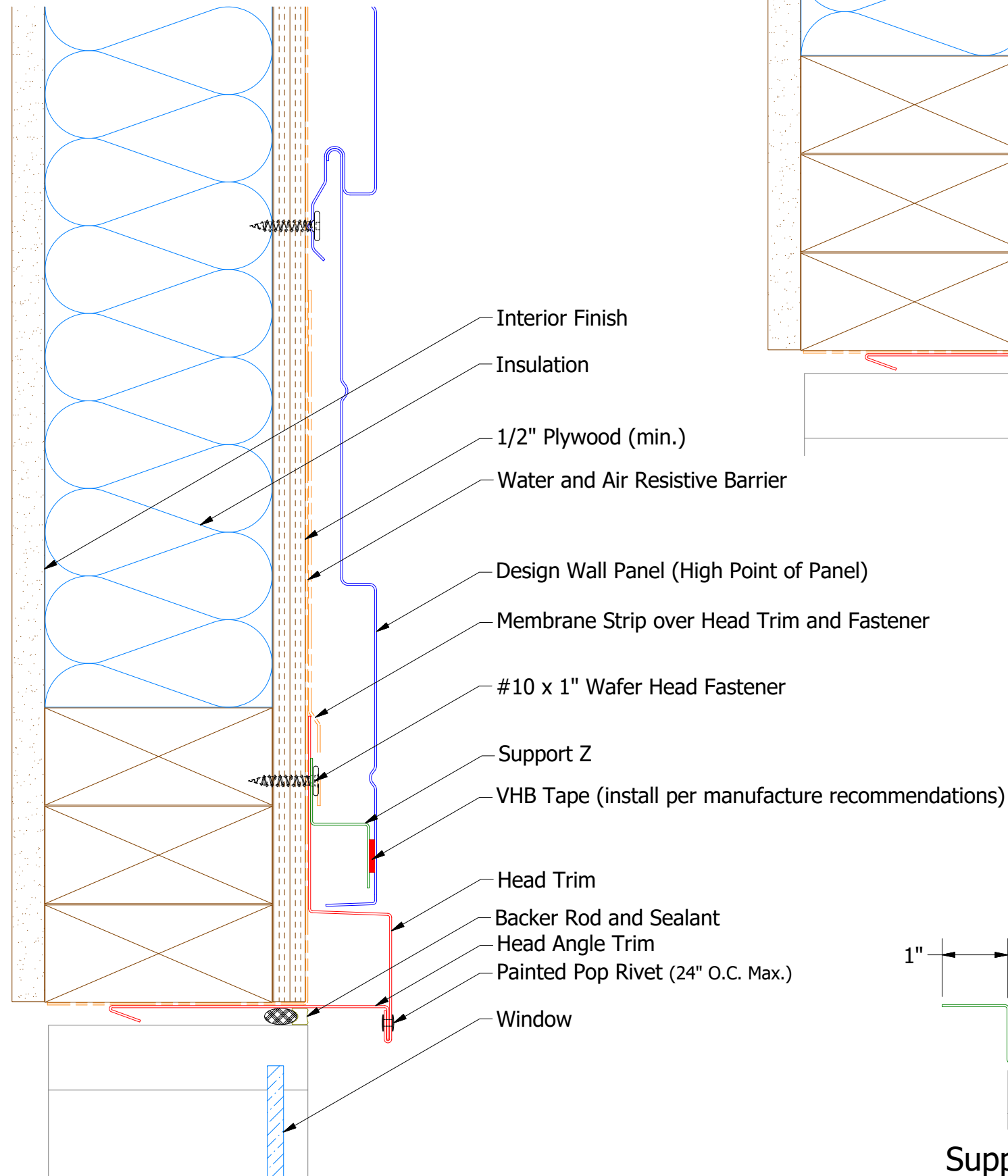
J Channel
DWA118: D1=1 1/8"
DSA178: D1=1 7/8"



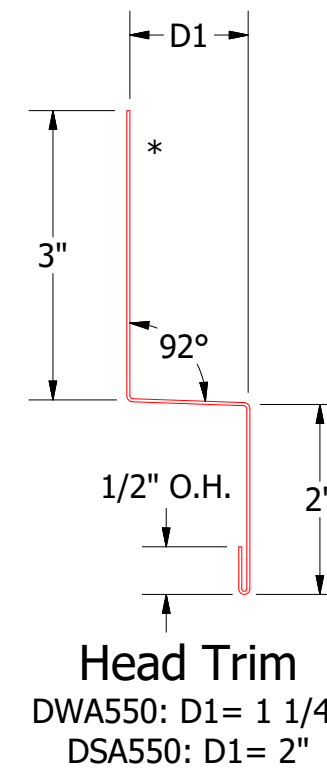
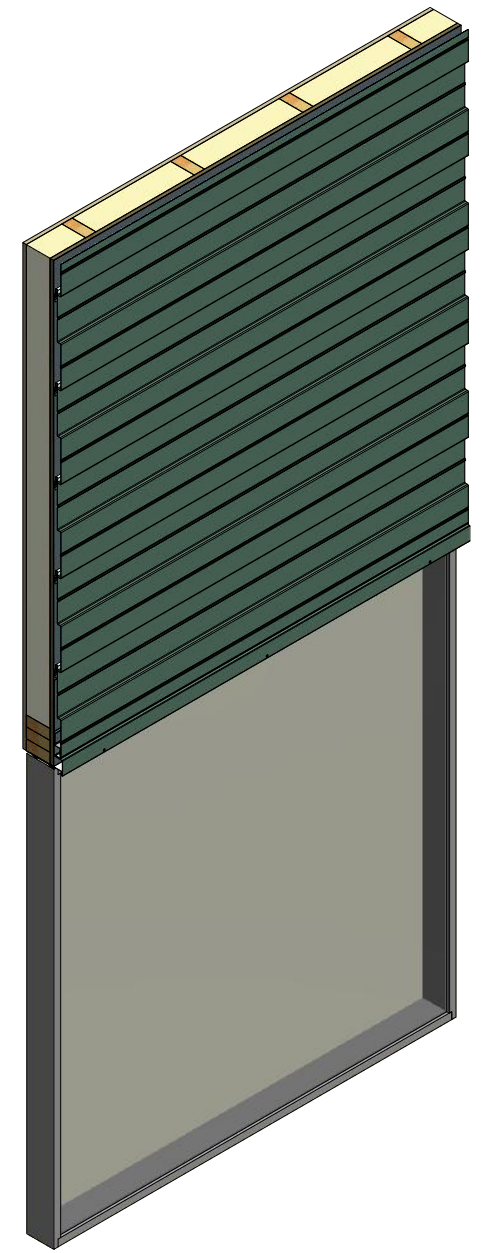
DWA975/ DSA975 - Joggle Cleat

						Design Wall Existing Window Sill Detail		
						DWG. NO.	DR	DATE
							DMR	7/20/2018
01	7/19/2021	Changed Pop Rivets to VHB Tape		DMR			APP	DATE
						MATERIAL		
REV. NO.	DATE	DESCRIPTION OF REVISION		BY	APP		SH. SIZE	SCALE
							B	X:X

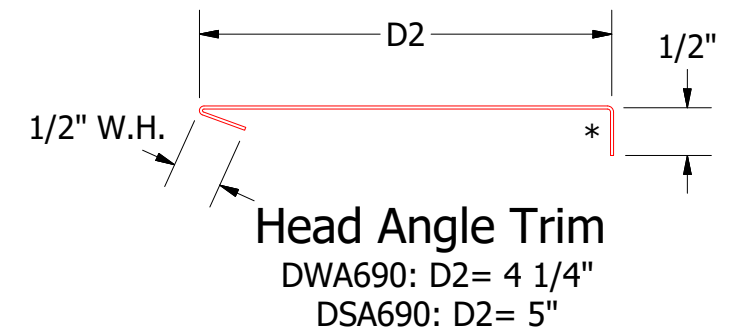
Horizontal Panel



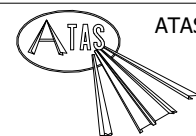
DSA975/DWA975 - Joggle Cleat



Head Trim



Head Angle Trim



ATAS INTERNATIONAL, INC
Allentown PA
610-395-8445
Mesa AZ
480-558-7210

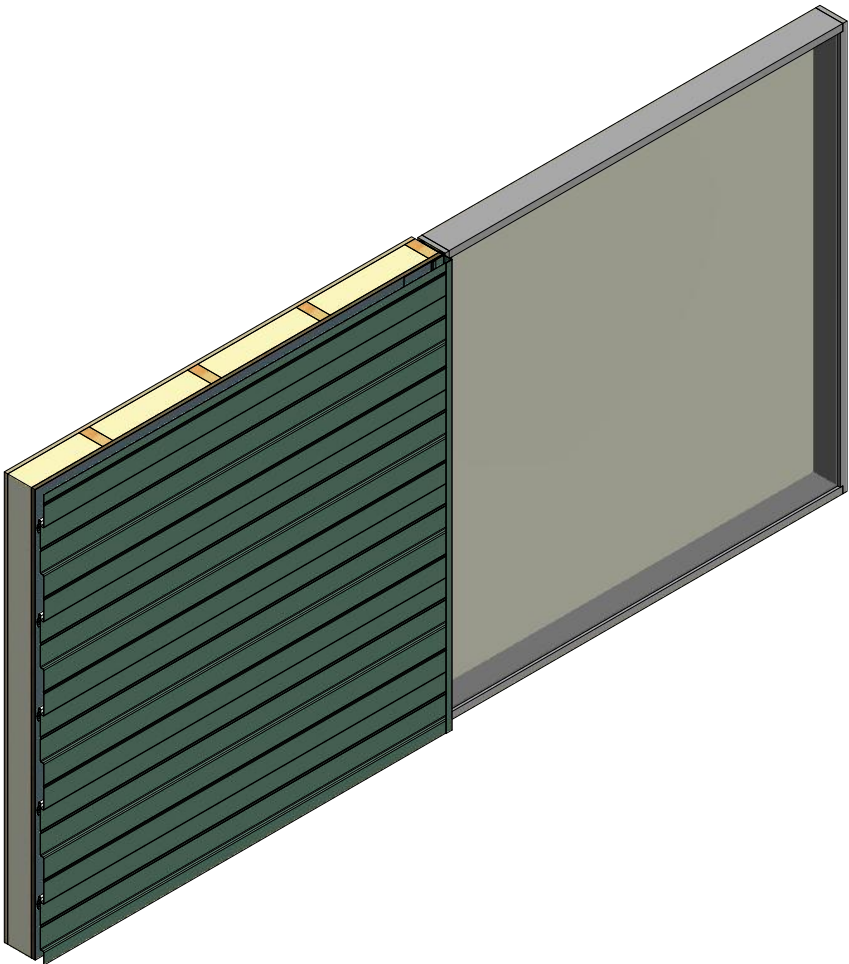
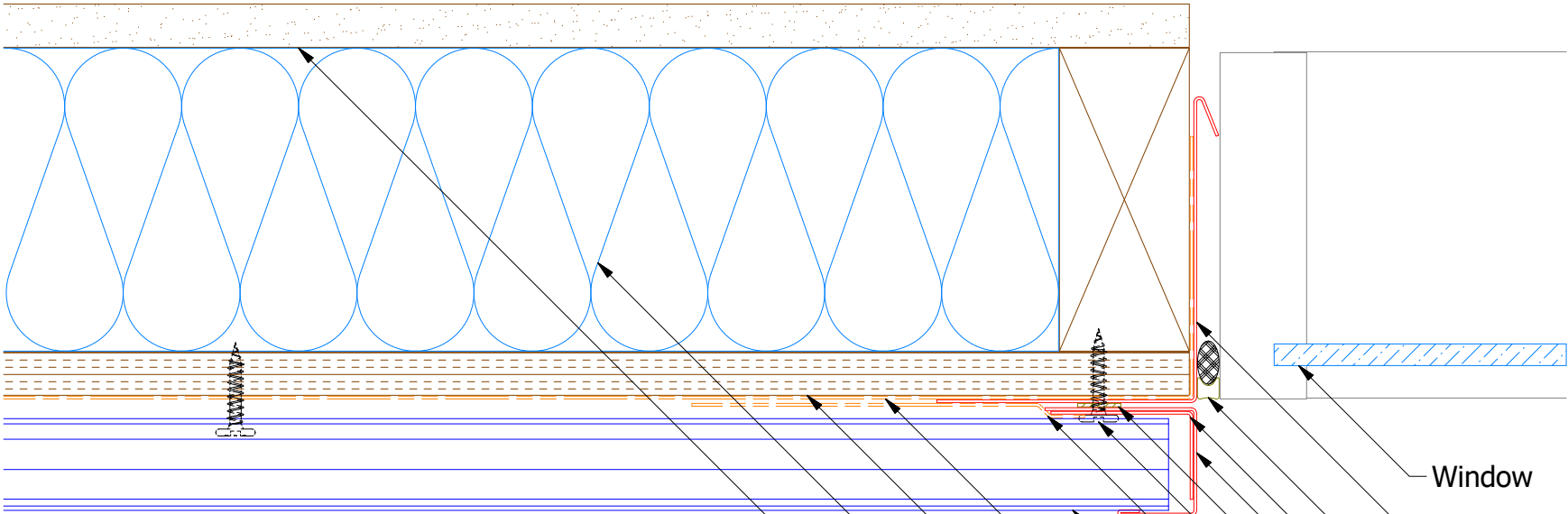
					TITLE					Design Wall Head Detail				
					DWG. NO.					DR	DMR	DATE	6/24/2016	
1	7/14/2021	Changed Pop Rivets to VHB Tape			DMR	MATERIAL					APP	DAS	DATE	7/26/16
REV. NO.	DATE	DESCRIPTION OF REVISION			BY	APP	SH. SIZE					B	SCALE	X:X

Note: * denotes color side.

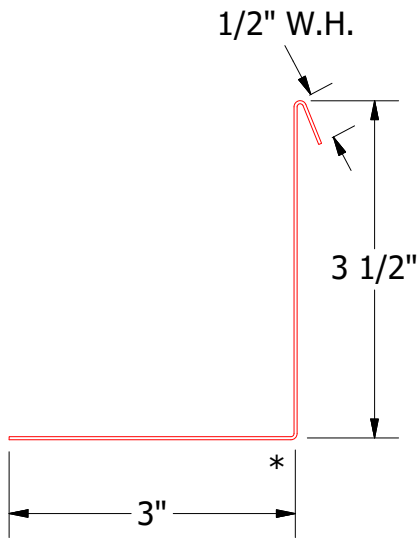
Note: stainless steel pop rivets maybe needed along with VHB tape for longer panels.

Support Z
DWA681: D3=1"
DSA681:D3=1 5/8"

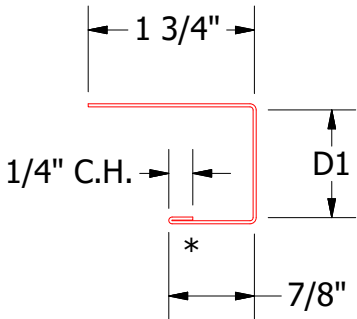
Horizontal Panel



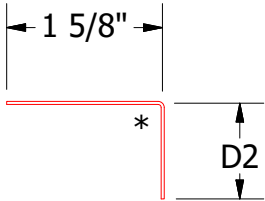
- Window
- Angle Trim With Return
- Backer Rod and Sealant
- Angle Trim
- J Channel
- Butyl Tape
- #10 x 1" Wafer Head Screw
- Membrane Strip over J Channel and Angle Trim
- Design Wall Panel
- Water and Air Resistive Barrier
- 1/2" Plywood (min.)
- Insulation
- Interior Finish



DWA683/DSA683 - Angle Trim With Return



J Channel
DWA118: D1= 1 1/8"
DSA178: D1= 1 7/8"

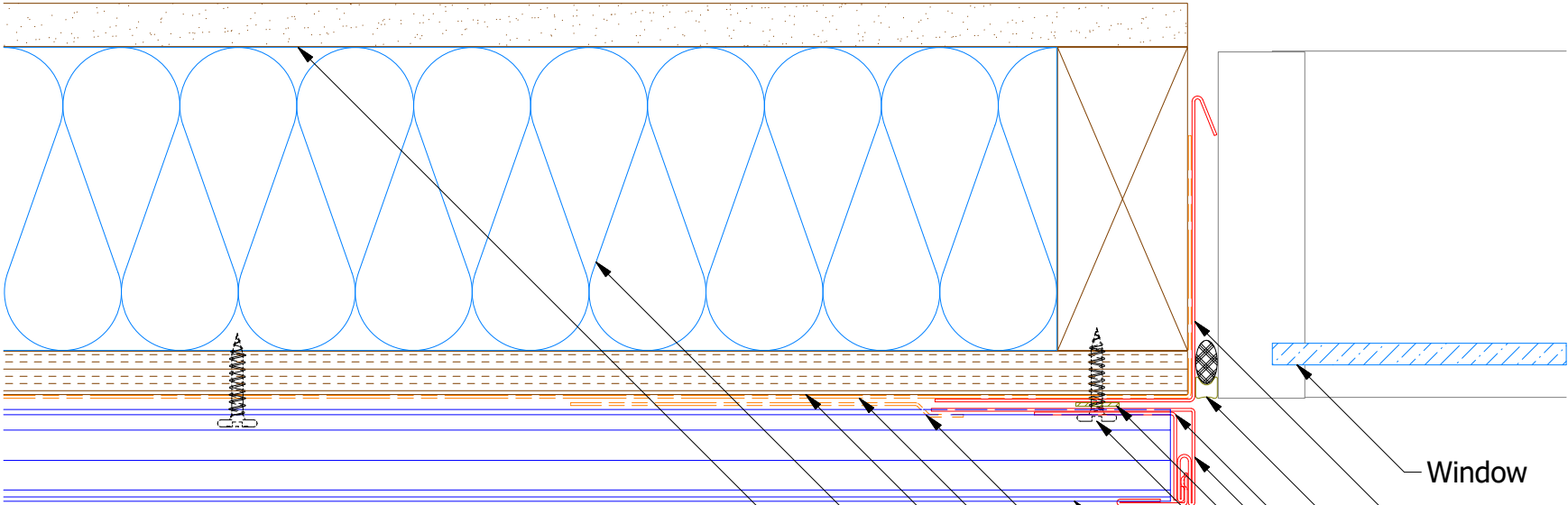


Angle Trim
DWA680: D2= 1"
DSA680: D2= 1 3/4"

Note: * denotes color side.

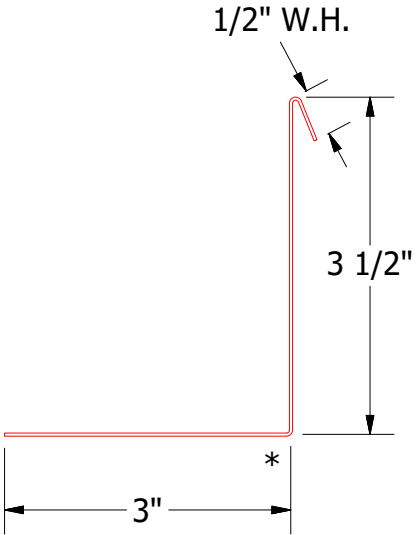
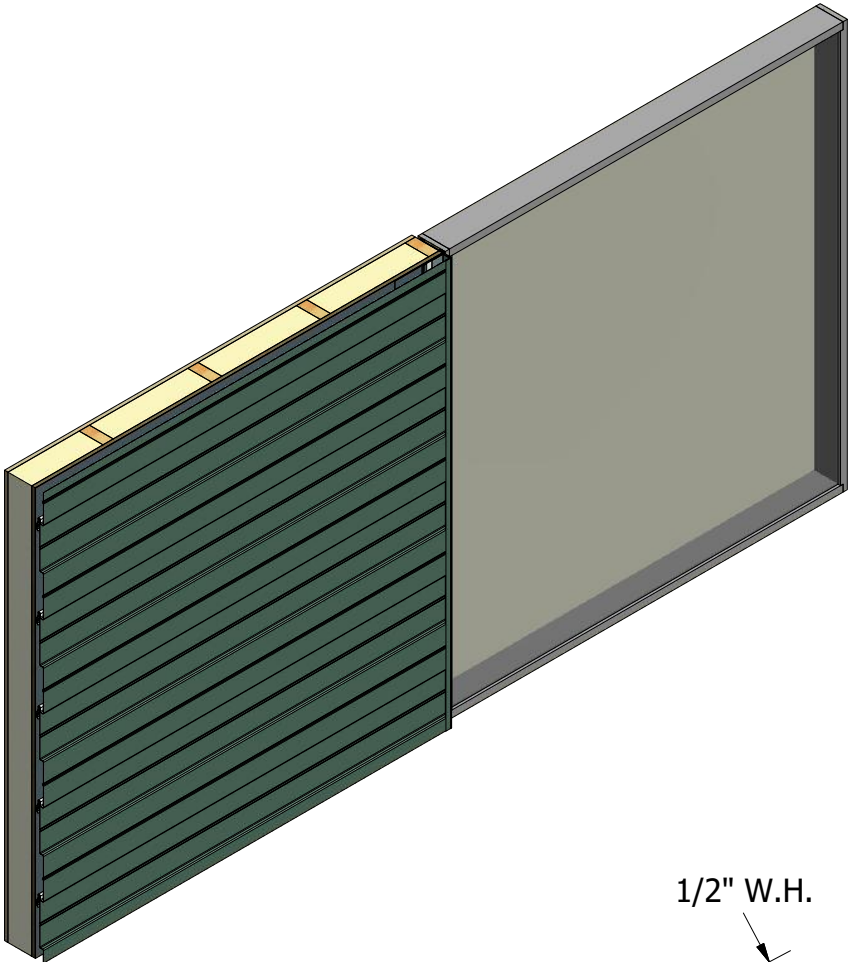
TITLE				Design Wall Jamb Detail			
02	7/19/2021	Changed Pop Rivets to VHB Tape	DMR	DWG. NO.	DR	DMR	DATE 6/27/2016
01	11/6/2019	Updated SKU # for Angle Trim	KRK	MATERIAL	APP	DAS	DATE 7/26/16
REV. NO.	DATE	DESCRIPTION OF REVISION	BY	APP	SH. SIZE	B	SCALE X:X

Horizontal Panel - Alternate

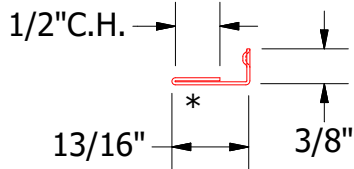


- Window
- Angle Trim With Return
- Backer Rod and Sealant
- Angle Trim
- Snap J Channel
- Butyl Tape
- #10 x 1" Wafer Head Screw

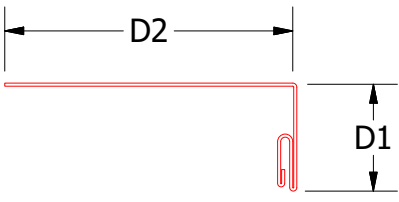
- Design Wall Panel
- Membrane Strip over Snap J Channel
- Water and Air Resistive Barrier
- 1/2" Plywood (min.)
- Insulation
- Interior Finish



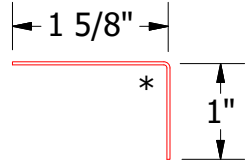
DWA683/DSA683 - Angle Trim With Return



UNS078 - Snap J Cover



Snap J Base*
DSA179: D1=1 7/8" ,D2=2 1/2"
DWA159: D1=1 1/8" ,D2=3"



Angle Trim
DWA680: D2= 1"
DSA680: D2= 1 3/4"

Note: * denotes color side.

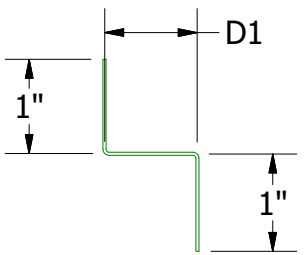
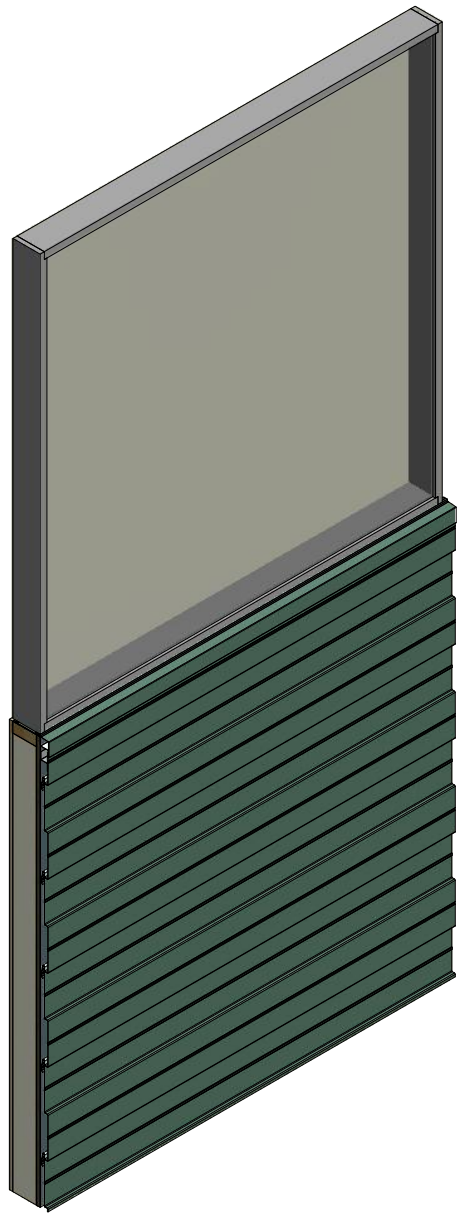
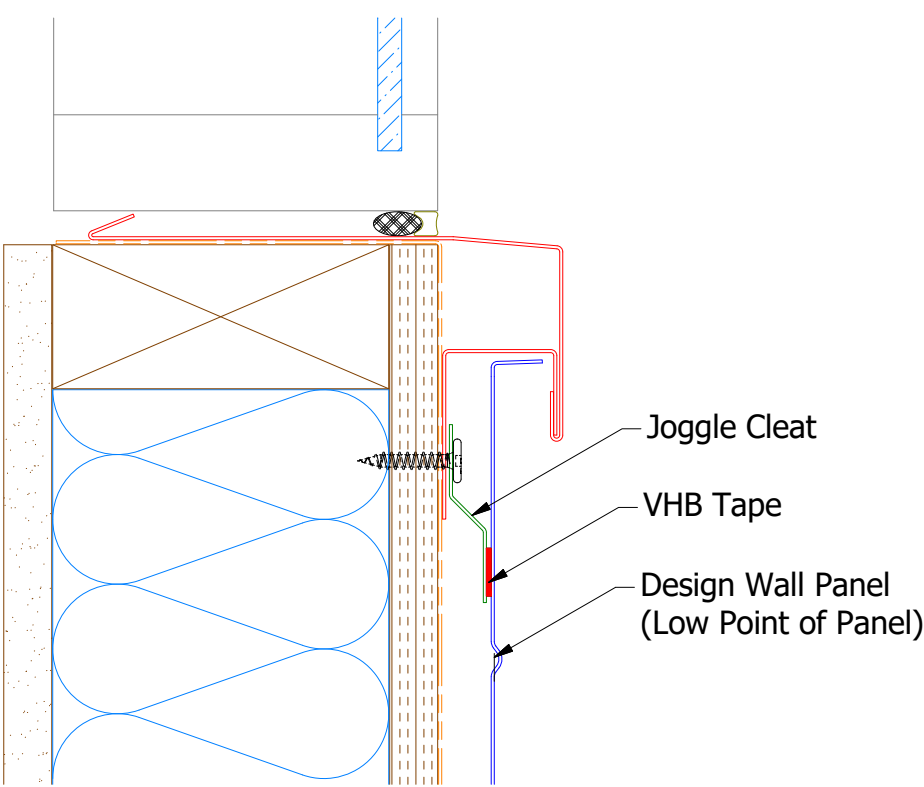
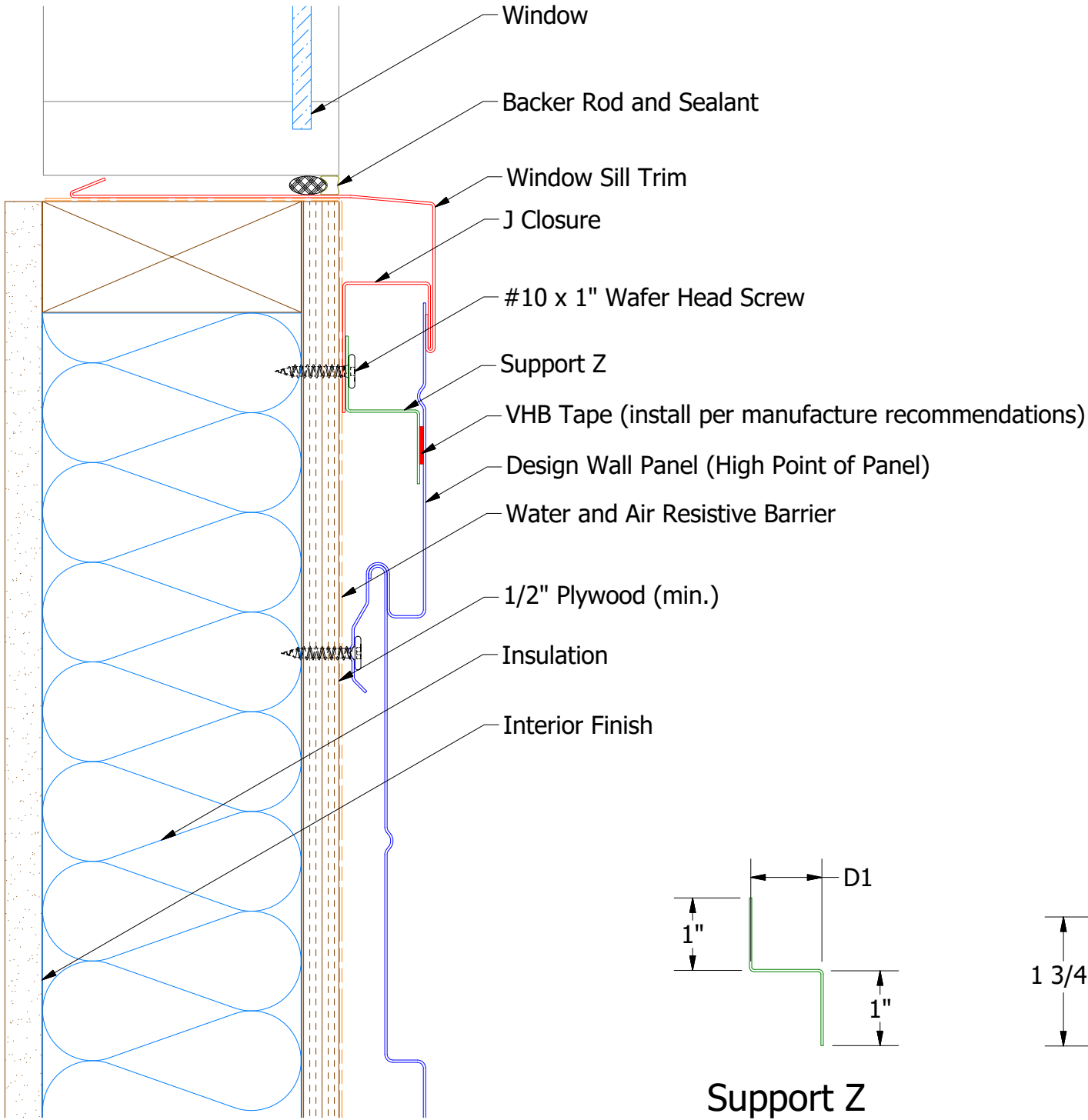
REV. NO.				DATE				DESCRIPTION OF REVISION				BY				APP			
TITLE				DR				DATE				DATE				DATE			
DWG. NO.				DMR				6/27/2016				DAS				7/26/16			
MATERIAL				SH. SIZE				B				SCALE				X:X			



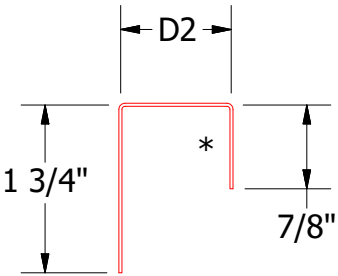
ATAS INTERNATIONAL, INC
Allentown PA
610-395-8445
Mesa AZ
480-558-7210

Design Wall Jamb Alt Detail

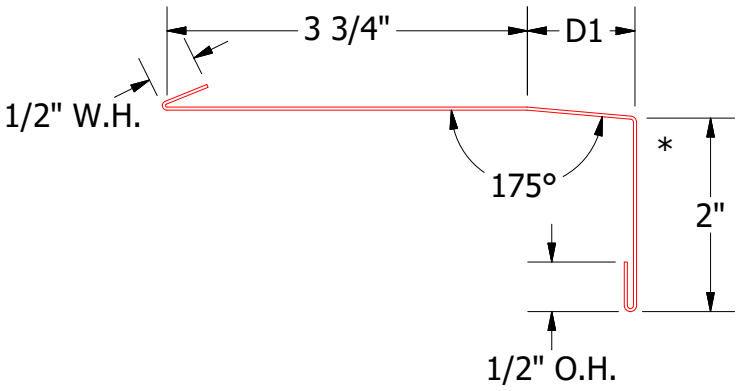
Horizontal Panel



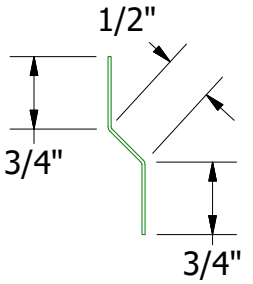
Support Z
DWA681: D3= 1"
DSA681: D3= 1 5/8"



J Closure
DWA270: D2= 1 1/8"
DSA270: D2= 1 7/8"



Window Sill Trim
DWA670: D1= 1 1/8"
DSA670: D1= 1 7/8"



DWA975/DSA975 - Joggle Cleat

Note: * denotes color side.
Note: stainless steel pop rivets maybe needed along with VHB tape for longer panels.

REV. NO.				BY			
01	7/19/2021	Changed Pop Rivets to VHB Tape	DMR	APP			

DWG. NO.		DR	DMR	DATE
MATERIAL		APP	DAS	DATE
		SH. SIZE	B	SCALE
				X:X

TITLE		DATE	
Design Wall Window Sill Detail		6/29/2016	

ATAS		ATAS INTERNATIONAL, INC	
		Allentown PA	
		610-395-8445	
		Mesa AZ	
		480-558-7210	