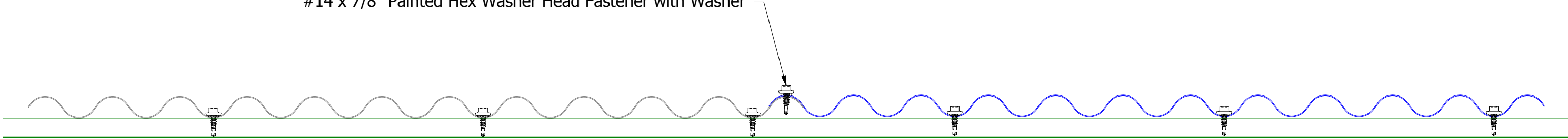


BWC374-Corrugated Panel

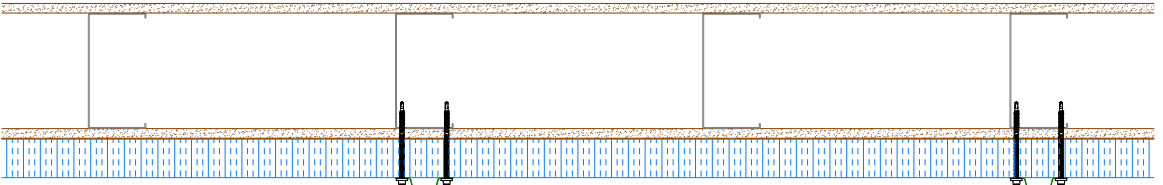
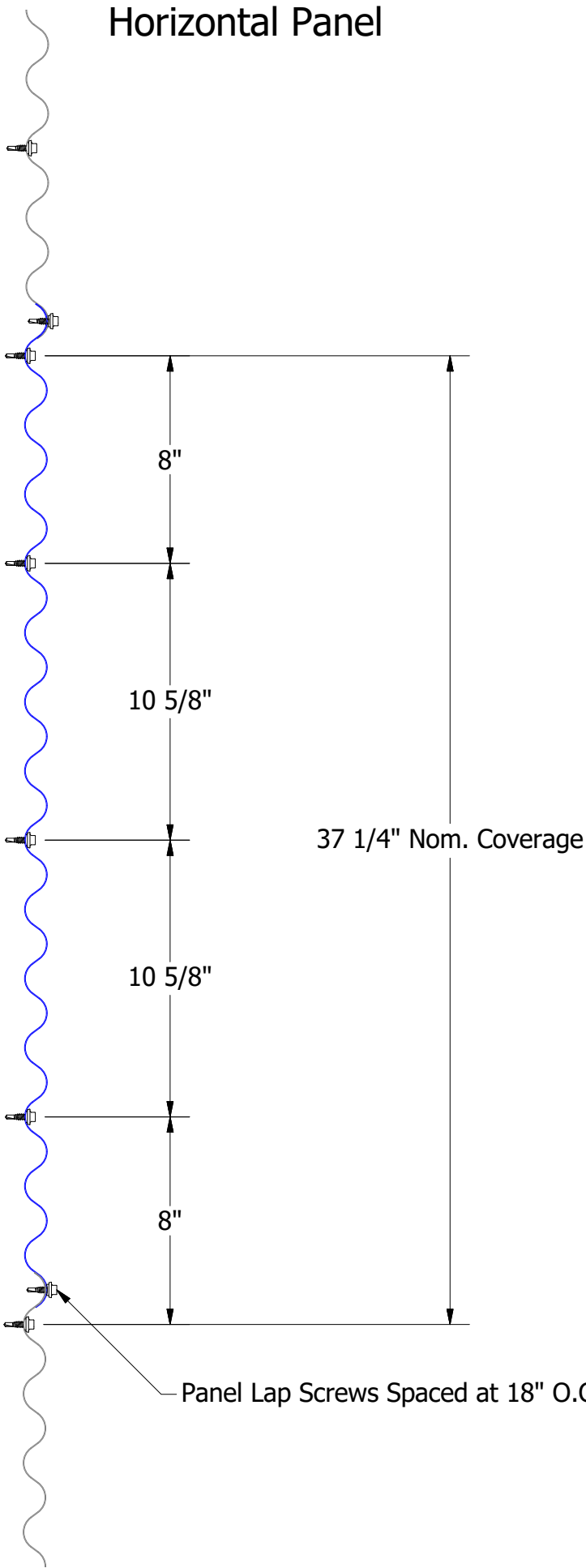
#14 x 7/8" Painted Hex Washer Head Fastener with Washer



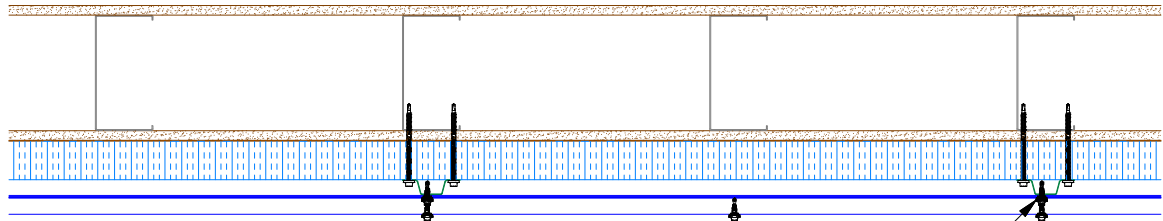
**Note:** This Detail is for Belvedere Corrugated Panel Installed on a Wall

						Corrugated Panel Detail	
				DWG. NO.		DR KRK	DATE 8/15/2014
				MATERIAL		APP	DATE
REV. NO.	DATE	DESCRIPTION OF REVISION		BY	APP	SH. SIZE B	SCALE X:X

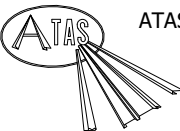
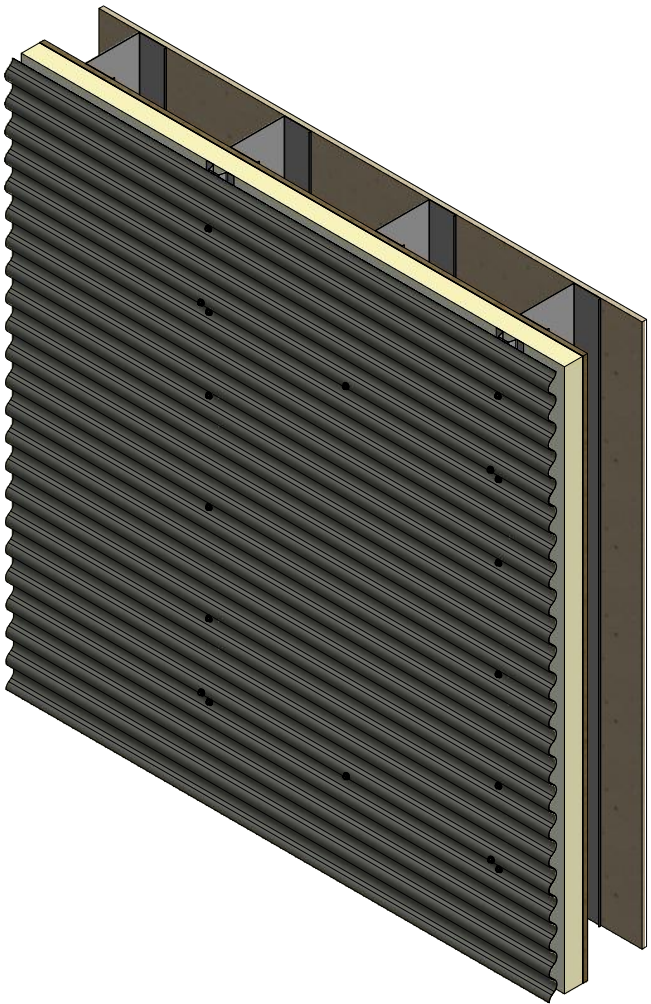
Horizontal Panel



Attach Subgirts into Metal Wall Studs  
using Appropriate Fasteners  
at 36" O.C. Max.



Attach Panel System to Subgirts using  
#14 x 7/8" HWH Screws.

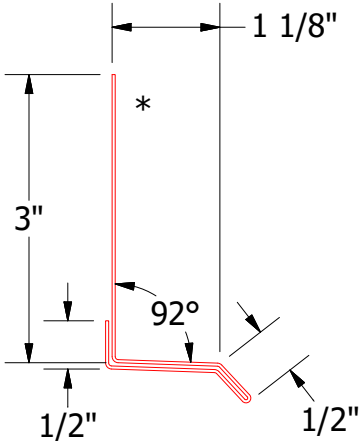
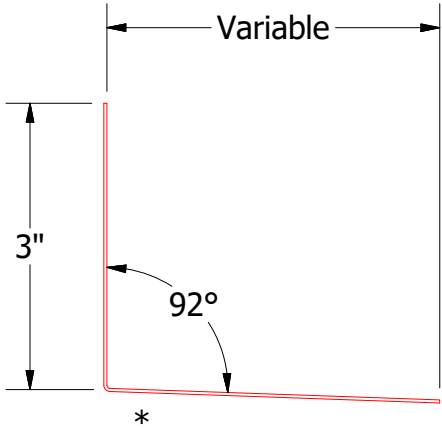
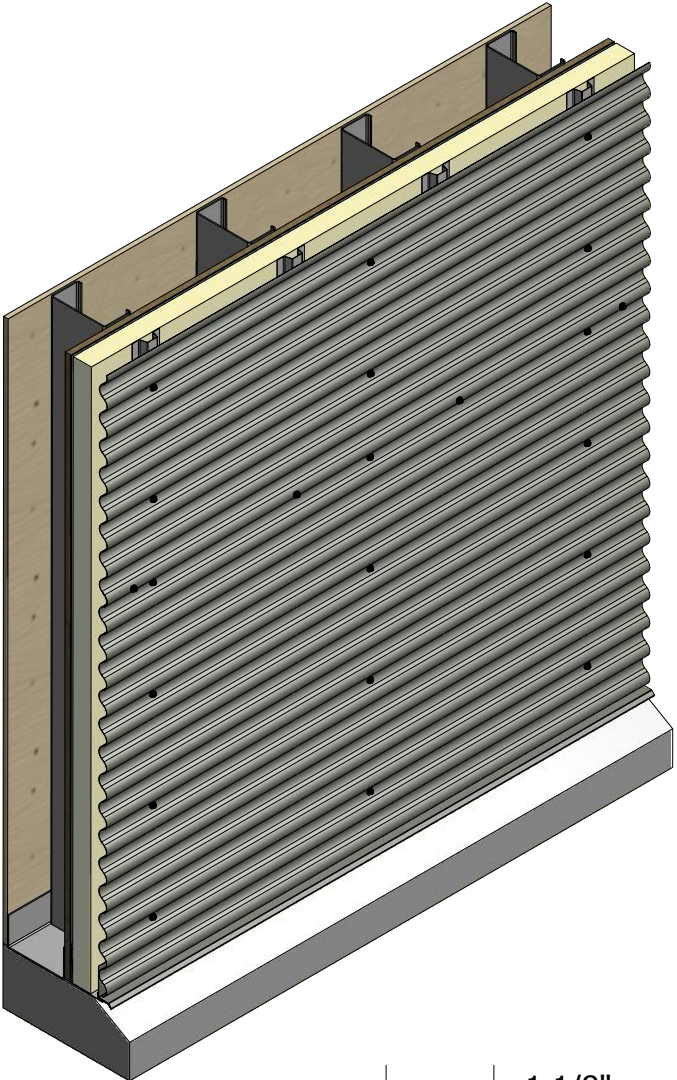
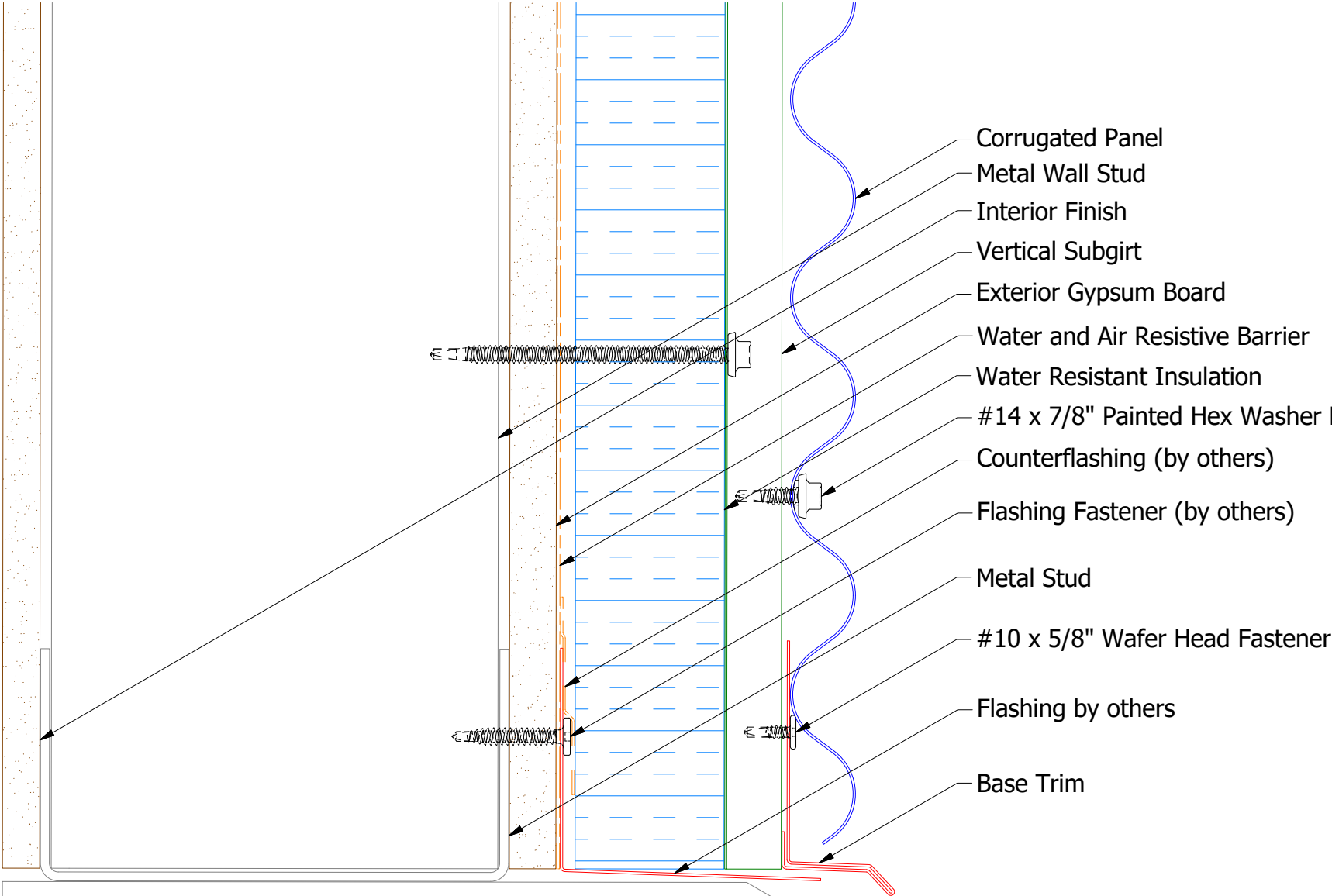


ATAS INTERNATIONAL, INC  
Allentown PA  
610-395-8445  
Mesa AZ  
480-558-7210

TITLE  
Corrugated Panel Fastening Detail

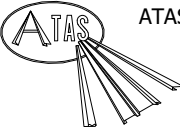
						DWG. NO.	DR	KRK	DATE	8/15/2014
01	11/11/2021	Updated Subgirt Fastener Spacing	KRK			MATERIAL	APP		DATE	
REV. NO.	DATE	DESCRIPTION OF REVISION	BY	APP		SH. SIZE	B	SCALE	X:X	

Horizontal Panel



BCA661-Base Trim

2 Stage Method of Weather Proofing



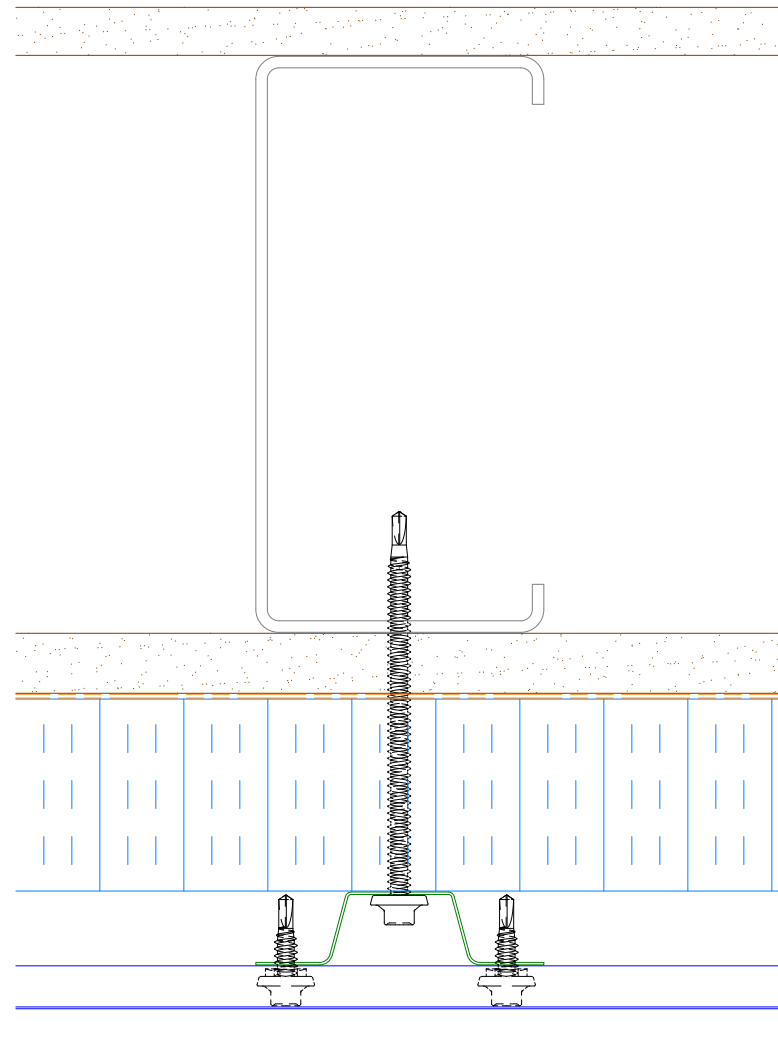
ATAS INTERNATIONAL, INC  
Allentown PA  
610-395-8445  
Mesa AZ  
480-558-7210

TITLE Corrugated Panel Base Detail

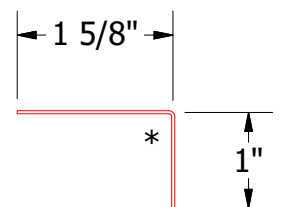
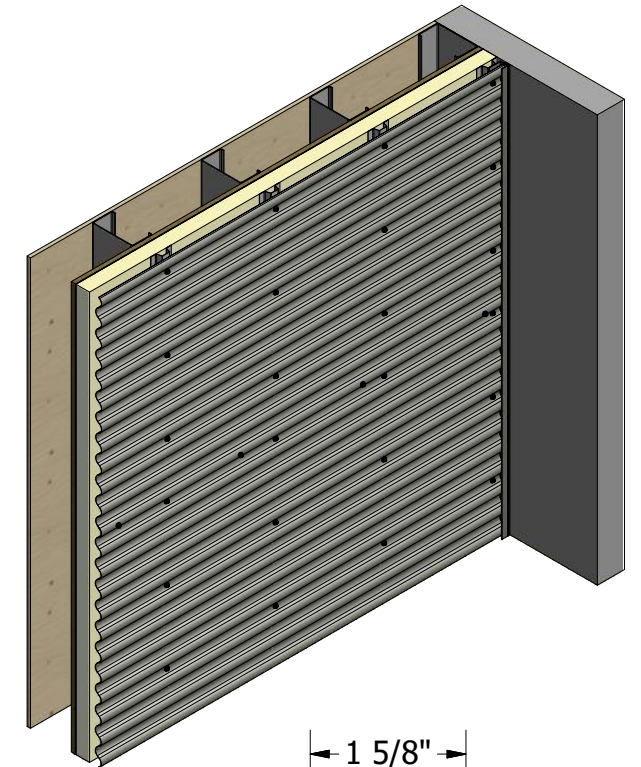
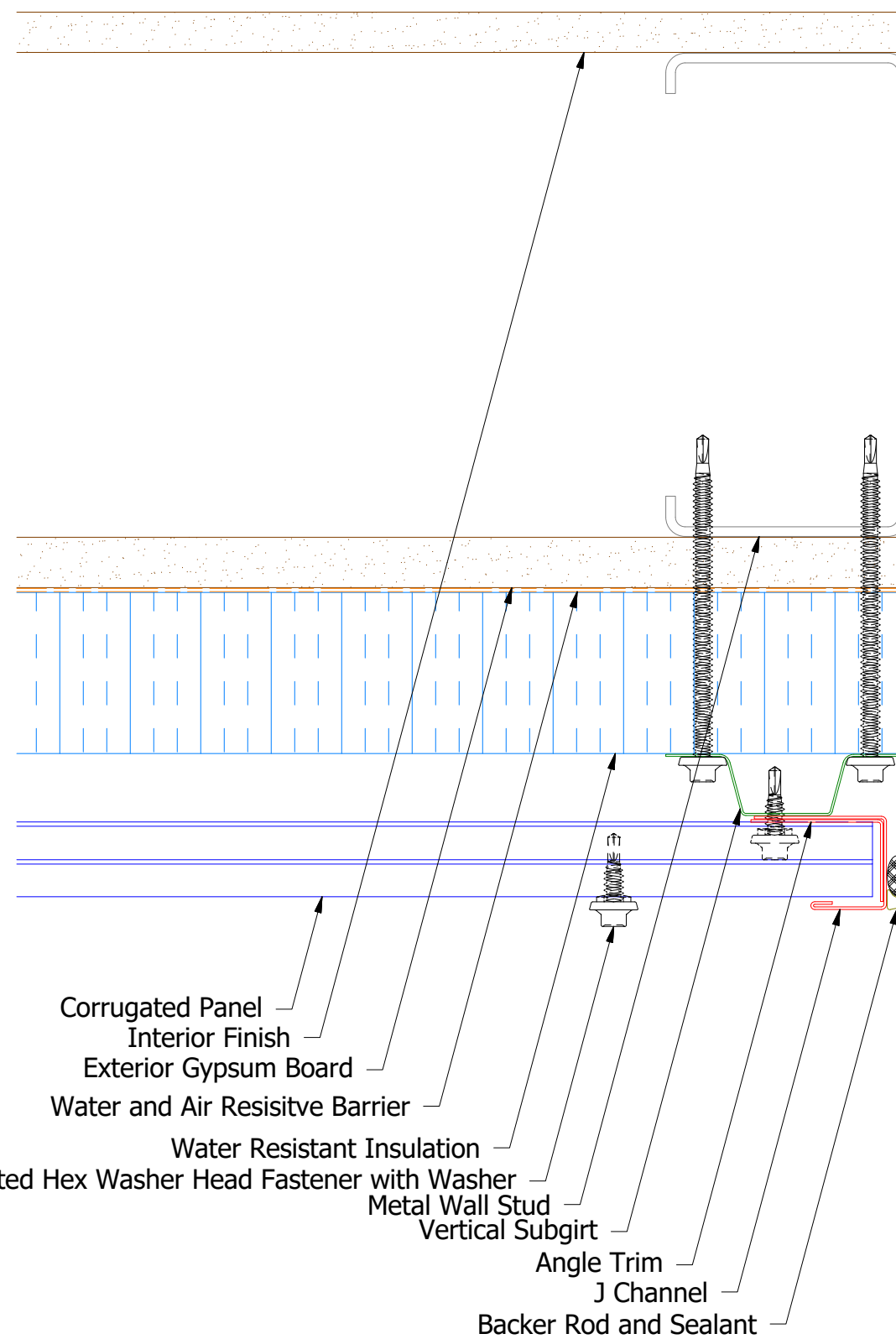
DWG. NO.	DR KRK	DATE 8/13/2014
APP		DATE
MATERIAL	SH. SIZE B	SCALE X:X

REV. NO.	DATE	DESCRIPTION OF REVISION	BY	APP

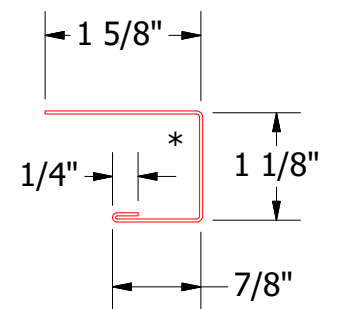
## Horizontal Panel



## Alternative Subgirt Orientation

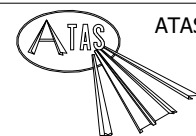


## BCA680-Angle Trim



BCA118-J Channel

## 2 Stage Method of Weather Proofing



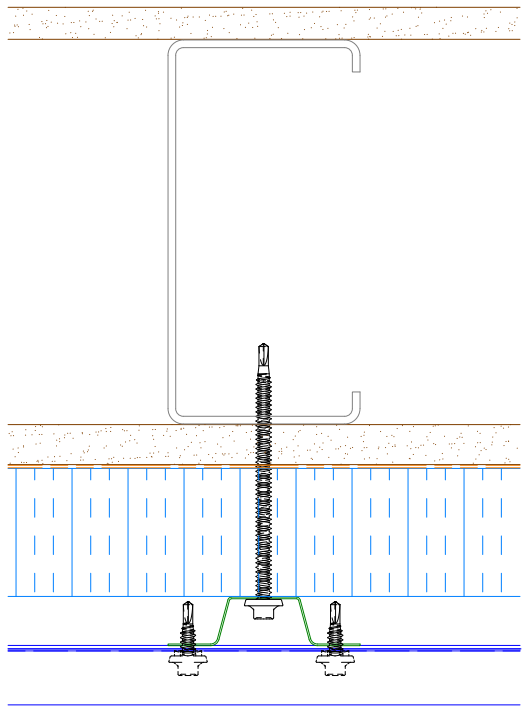
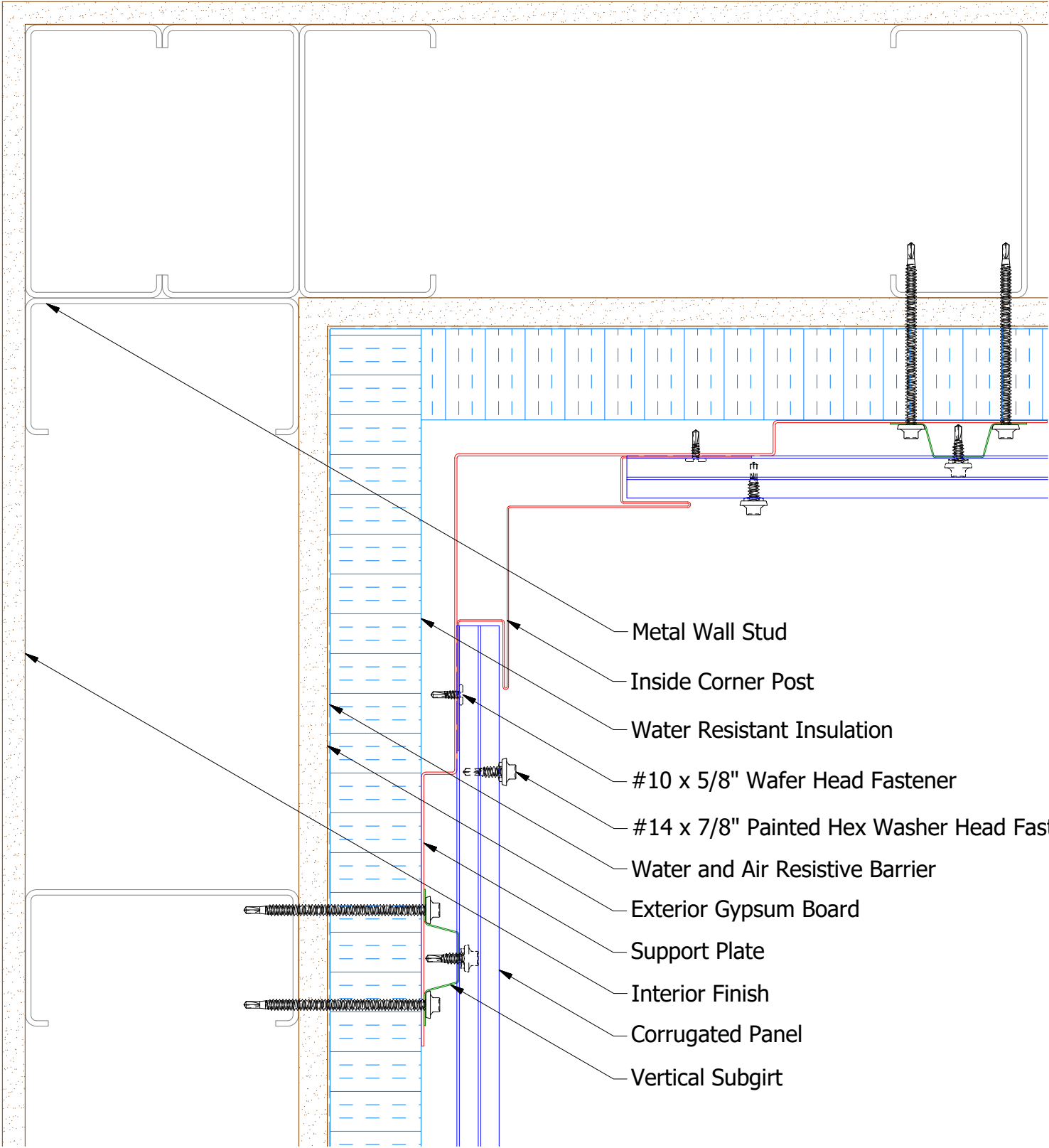
**ATAS INTERNATIONAL, INC**  
Allentown PA  
610-395-8445  
Mesa AZ  
480-558-7210

TITLE	Corrugated Panel Endwall Detail
-------	---------------------------------

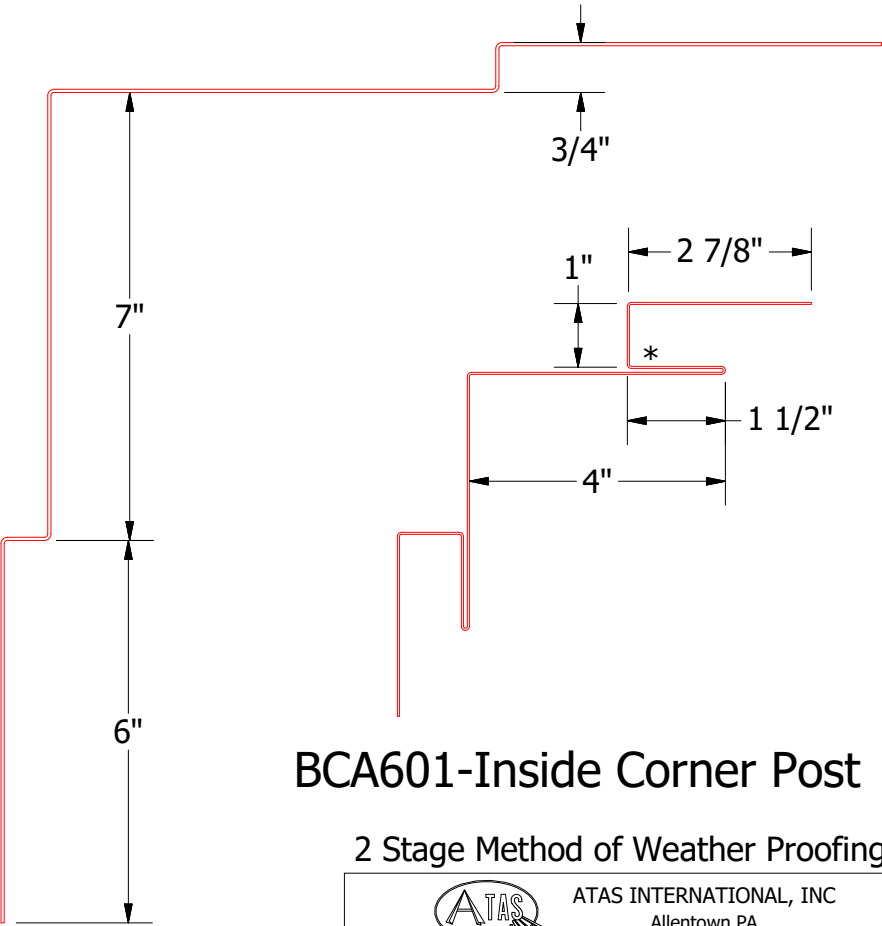
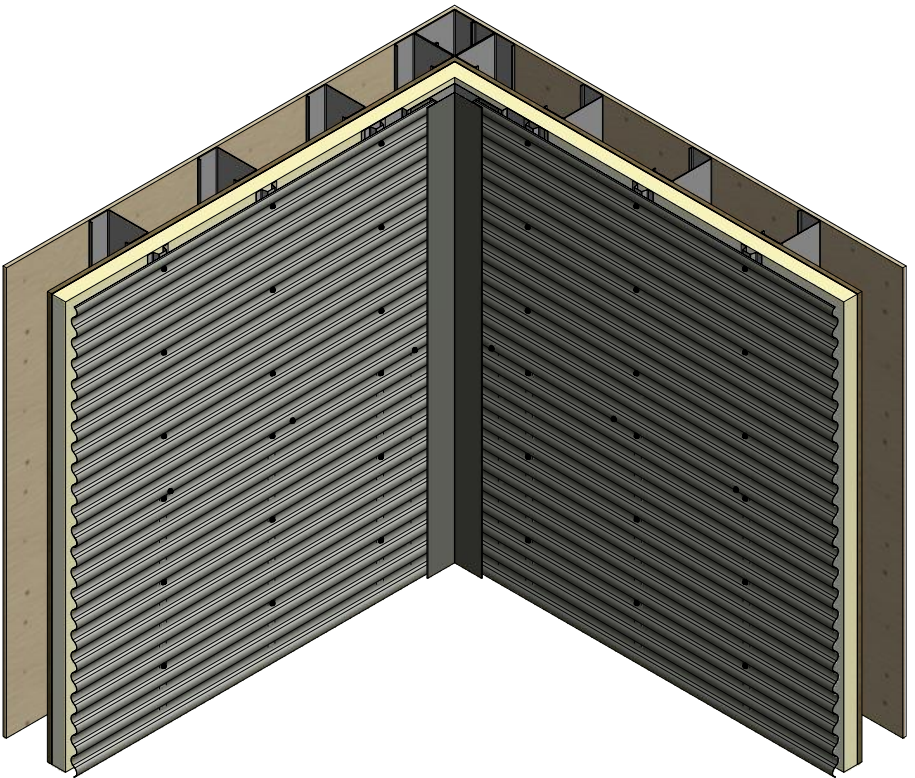
					TITLE		
					Corrugated Panel Endwall Detail		
					DWG. NO.		DR KRK
							DATE 8/14/2014
					MATERIAL		APP
							DATE
REV. NO.	DATE	DESCRIPTION OF REVISION	BY	APP			SH. SIZE B
							SCALE X:X



Horizontal Panel



Alternate Subgirt Orientation



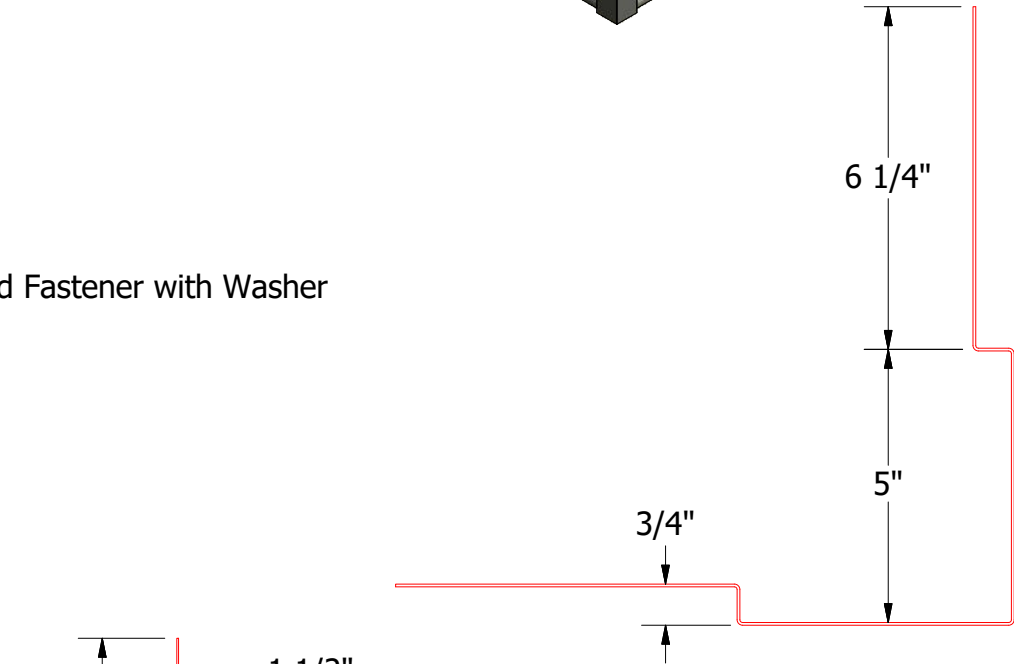
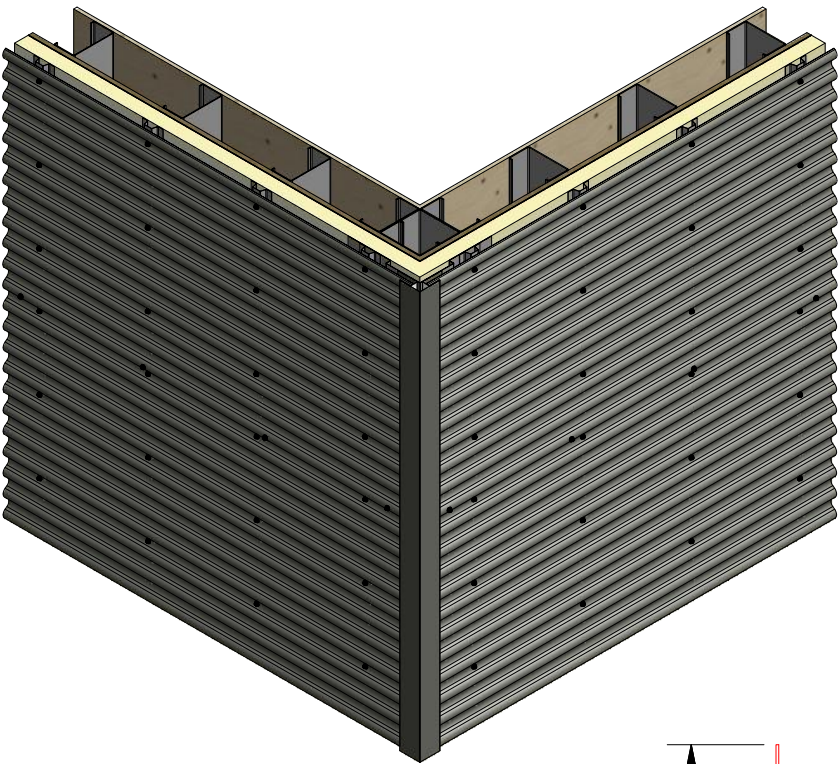
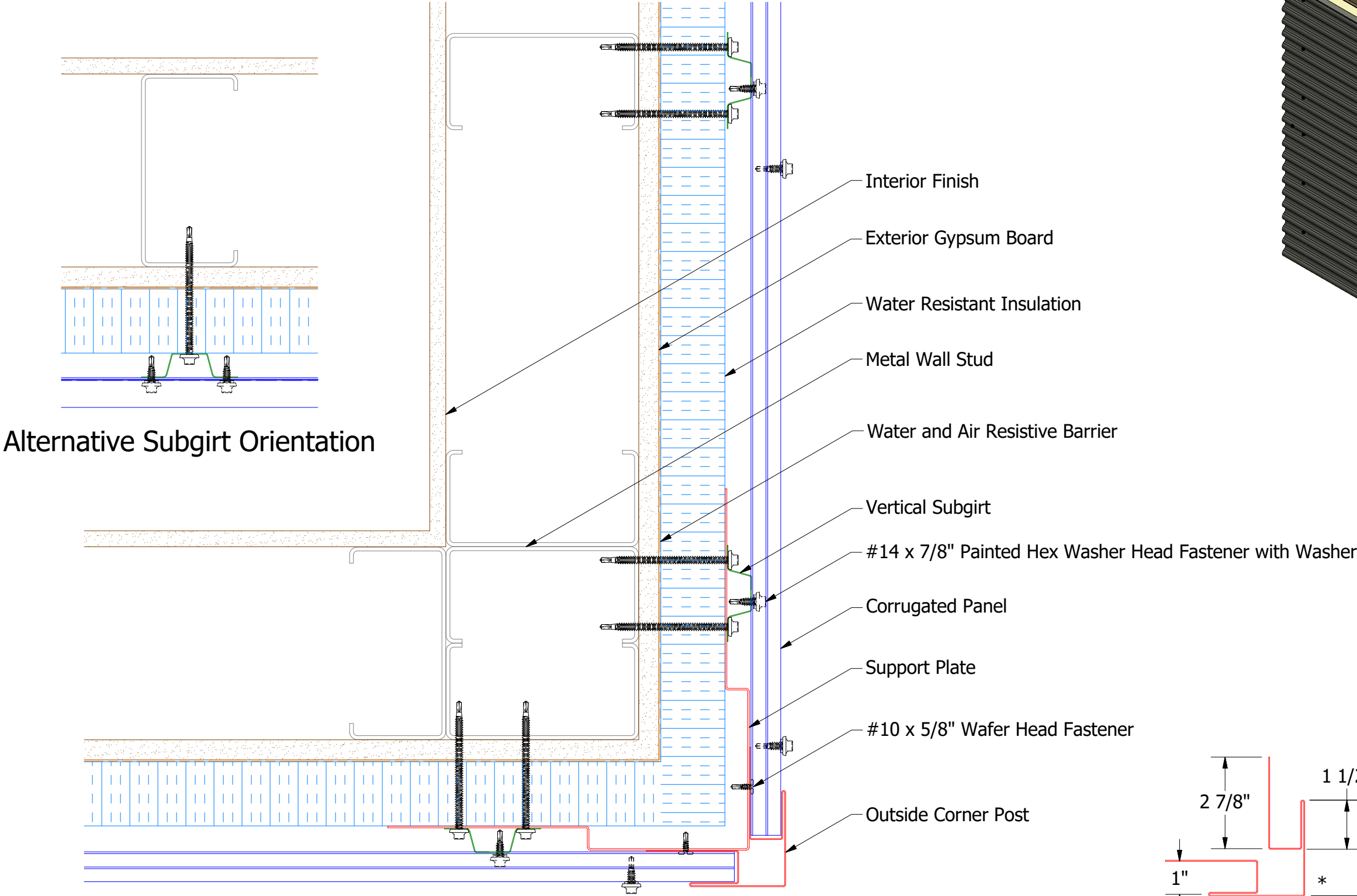
Support Plate

BCA601-Inside Corner Post  
2 Stage Method of Weather Proofing

**NOTE:** Optional 18 GA. Plate for Outside Corner Post is Available

						Corrugated Panel Inside Corner Detail		
						DWG. NO.	DR	DATE
							KRK	8/15/2014
						MATERIAL	APP	DATE
REV. NO.	DATE	DESCRIPTION OF REVISION	BY	APP			SH. SIZE	SCALE
							B	X:X

Horizontal Panel



Support Plate

BCA602-Outside Corner Post

2 Stage Method of Weather Proofing

ATAS INTERNATIONAL, INC

Allentown PA

610-395-8445

Mesa AZ

480-558-7210

TITLE

Corrugated Panel Outside Corner Detail

DWG. NO.

MATERIAL

DR

KRK

DATE

8/15/2014

APP

DATE

SH. SIZE

B

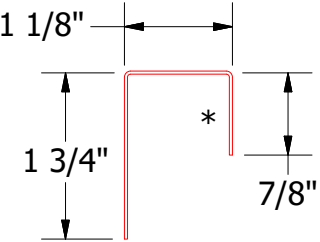
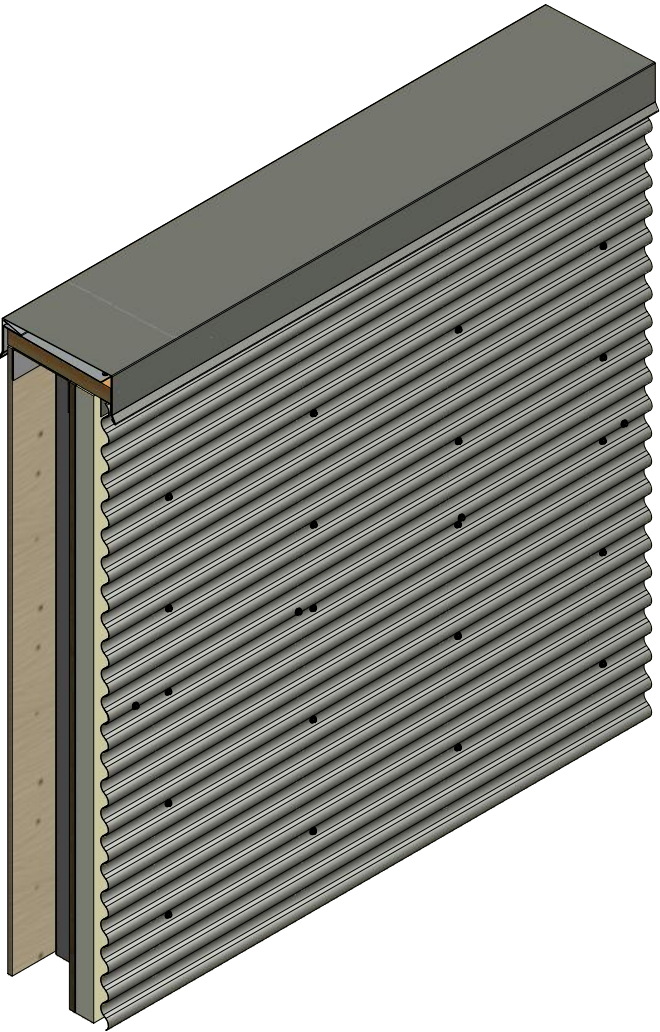
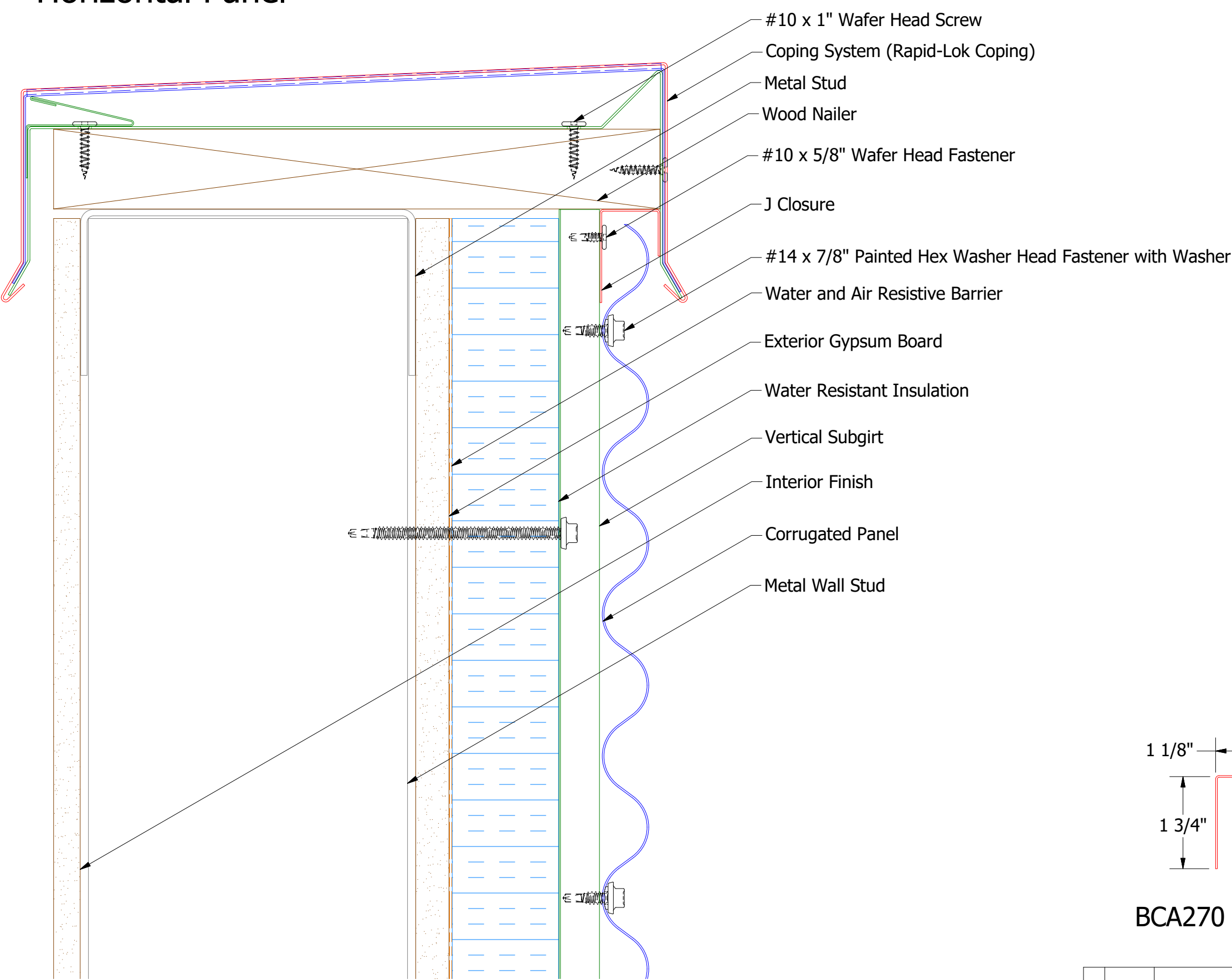
SCALE

X:X

**Note:** Optional 18 GA. Plate for Outside Corner Post is available.


REV. NO.	DATE	DESCRIPTION OF REVISION	BY	APP

Horizontal Panel



BCA270 - J Closure

2 Stage Method of Weather Proofing



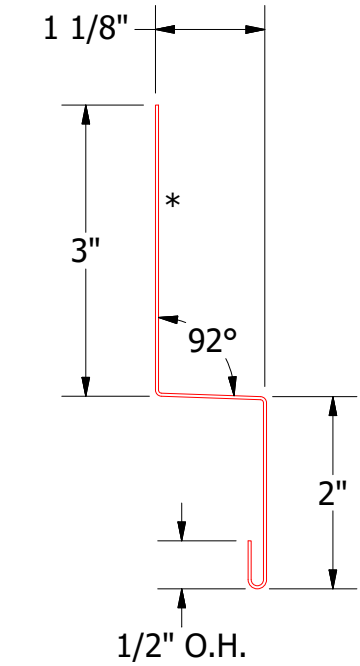
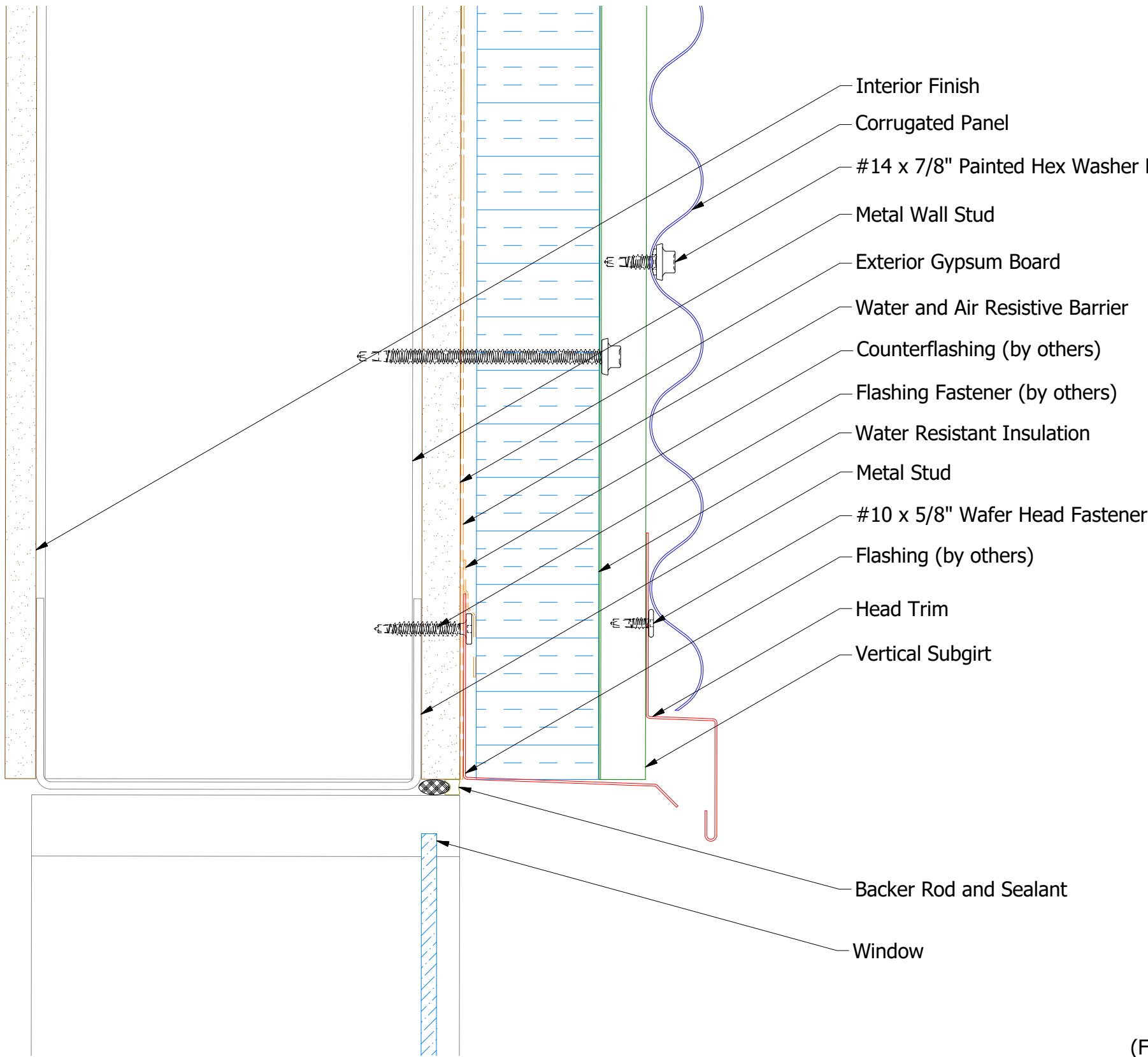
ATAS INTERNATIONAL, INC  
Allentown PA  
610-395-8445  
Mesa AZ  
480-558-7210

TITLE Corrugated Panel Coping Detail			
DWG. NO.		DR KRK	DATE 8/13/2014
MATERIAL		APP	DATE
REV. NO.	DATE	DESCRIPTION OF REVISION	BY APP
SH. SIZE B		SCALE X:X	

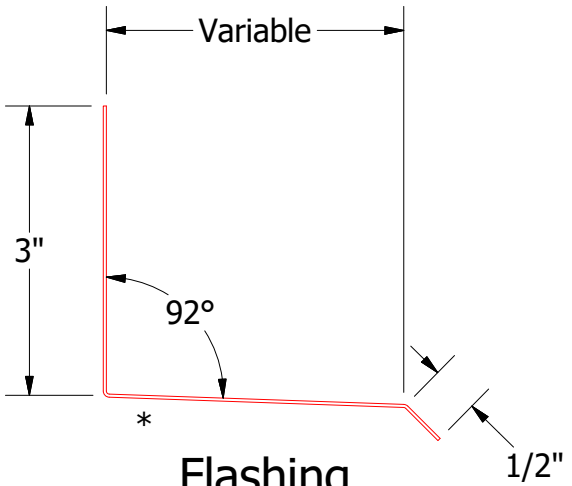
REV. NO.	DATE	DESCRIPTION OF REVISION	BY	APP



Horizontal Panel

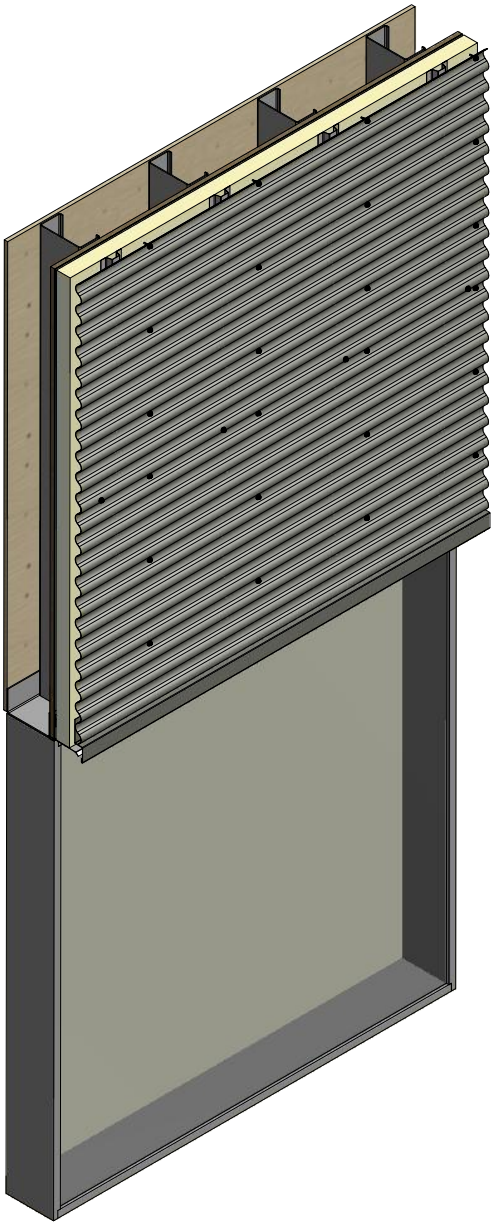


BCA550-Head Trim



Flashing

(Field Fabricated From Color Matched Flat Stock)



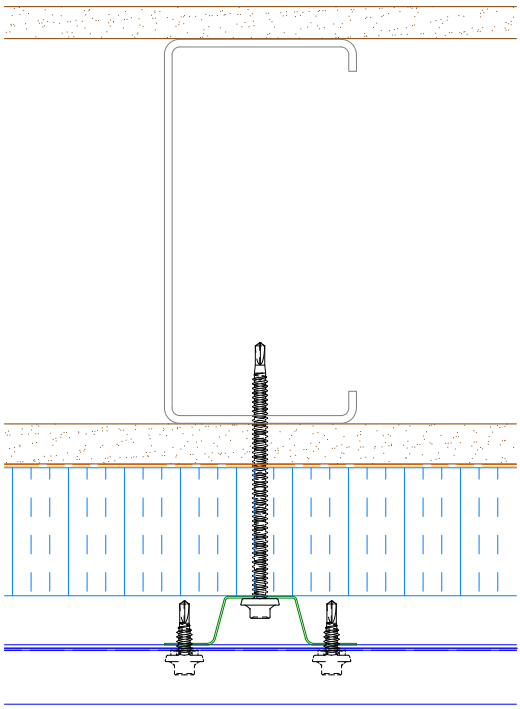
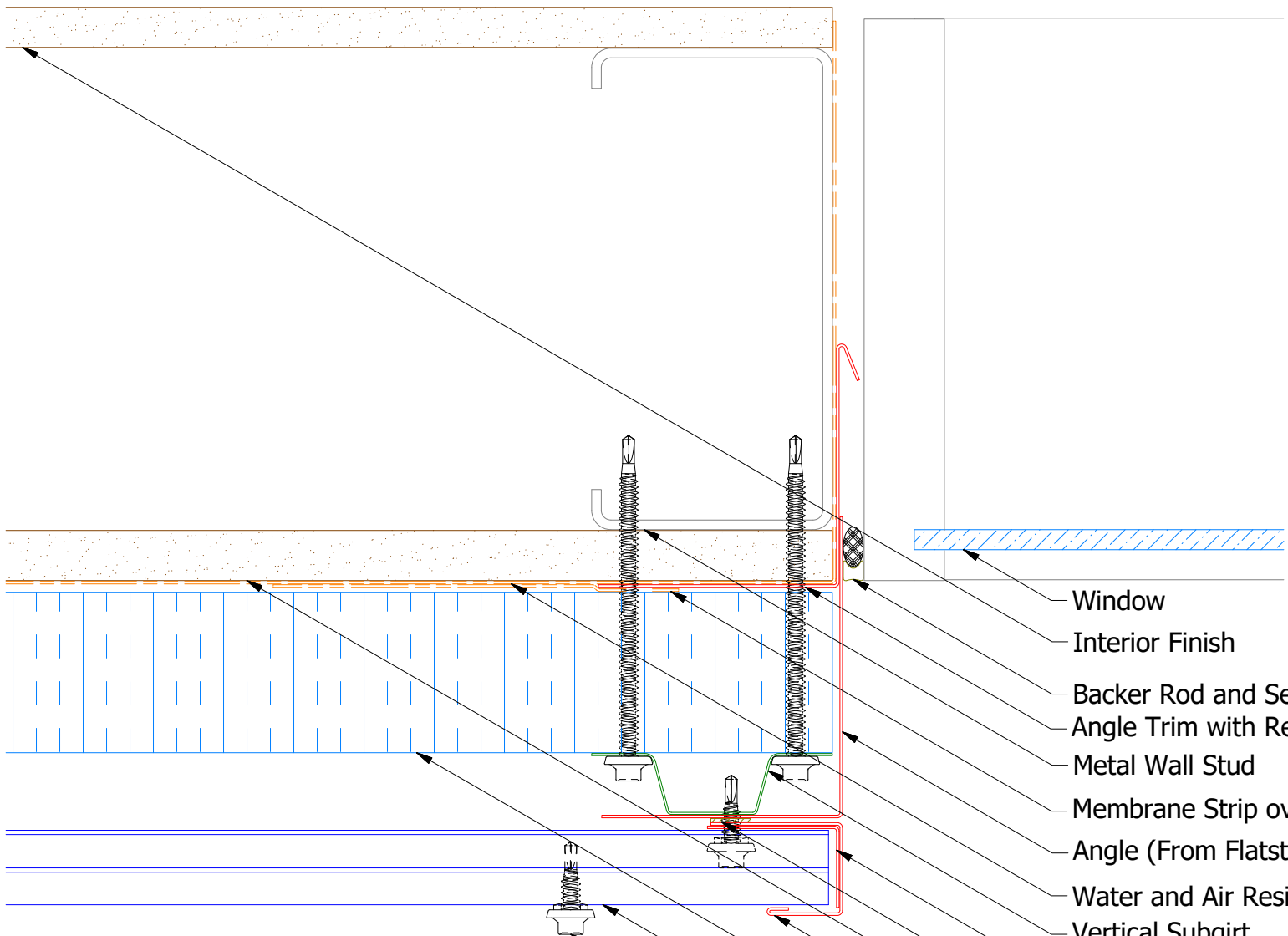
2 Stage Method of Weather Proofing

TITLE		Corrugated Panel Head Detail	
DWG. NO.	DR	DATE	8/14/2014
APP	KRK	DATE	
MATERIAL	SH. SIZE	SCALE	X:X
	B		

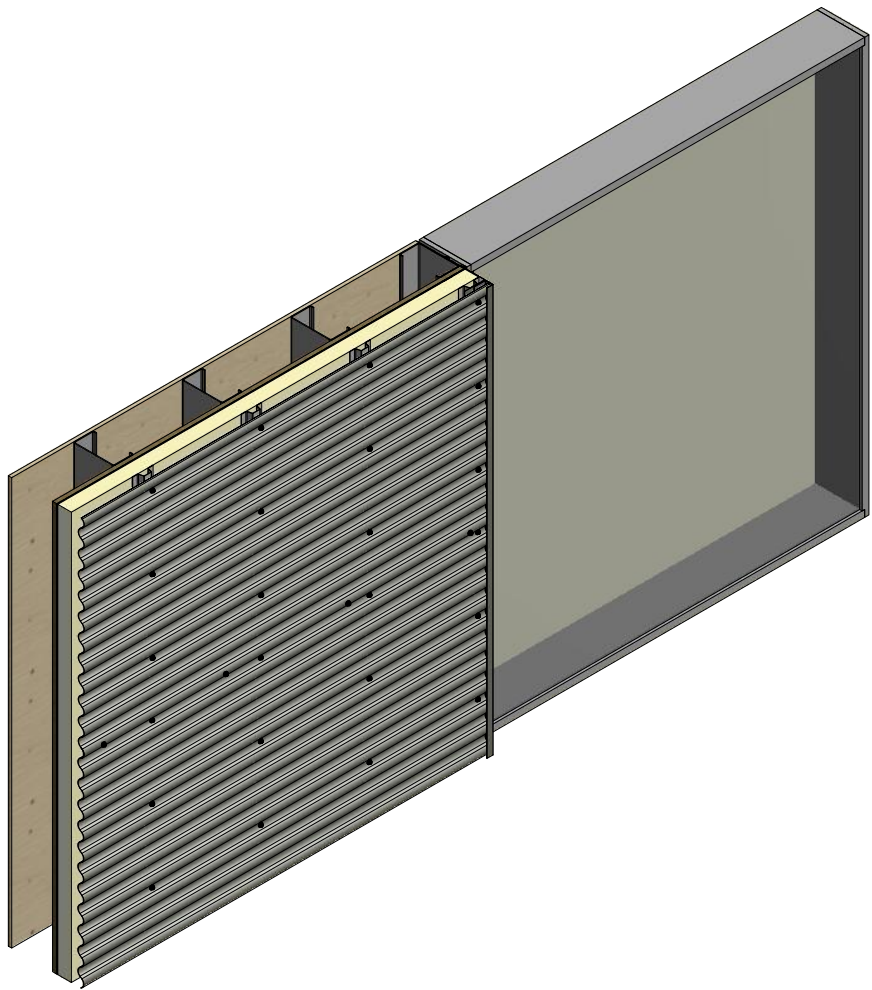
REV. NO.	DATE	DESCRIPTION OF REVISION	BY	APP



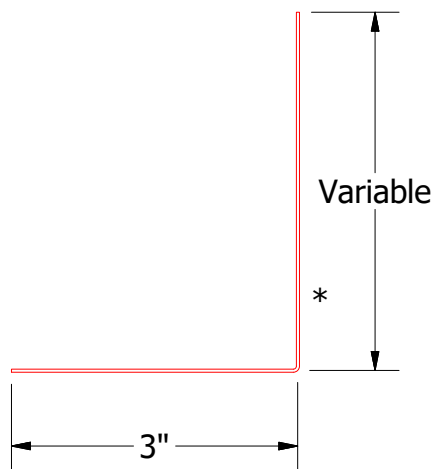
Horizontal Panel



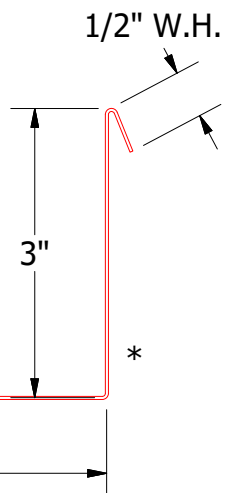
Alternate Subgirt Orientation (NTS)



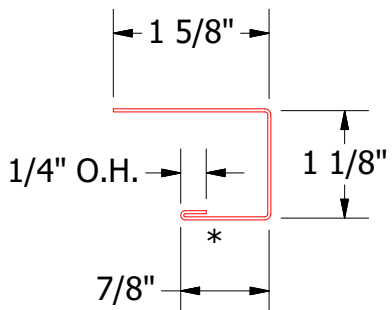
- Window
- Interior Finish
- Backer Rod and Sealant
- Angle Trim with Return
- Metal Wall Stud
- Membrane Strip over Angle with Return
- Angle (From Flatstock)
- Water and Air Resistive Barrier
- Vertical Subgirt
- Angle Trim
- Butyl Tape
- Exterior Gypsum Board
- J Channel
- Water Resistant Insulation
- Corrugated Panel
- #14 x 7/8" Painted Hex Washer Head Fastener with Washer



BCA680-Angle Trim




BCA683-Angle Trim with Return



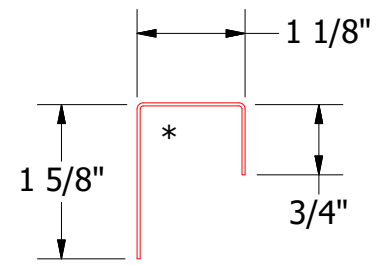
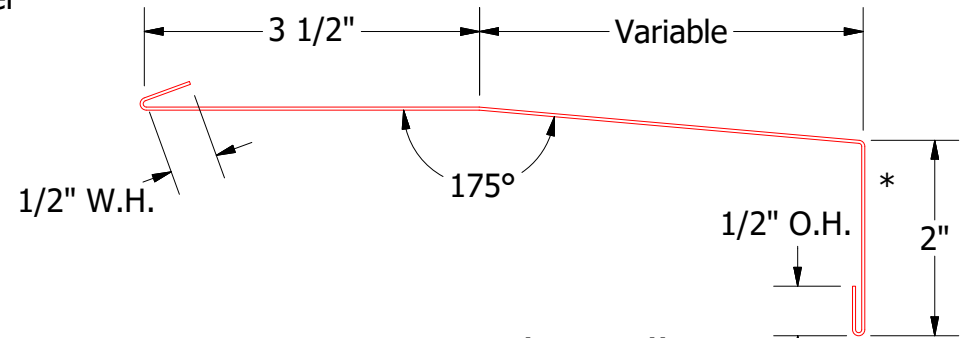
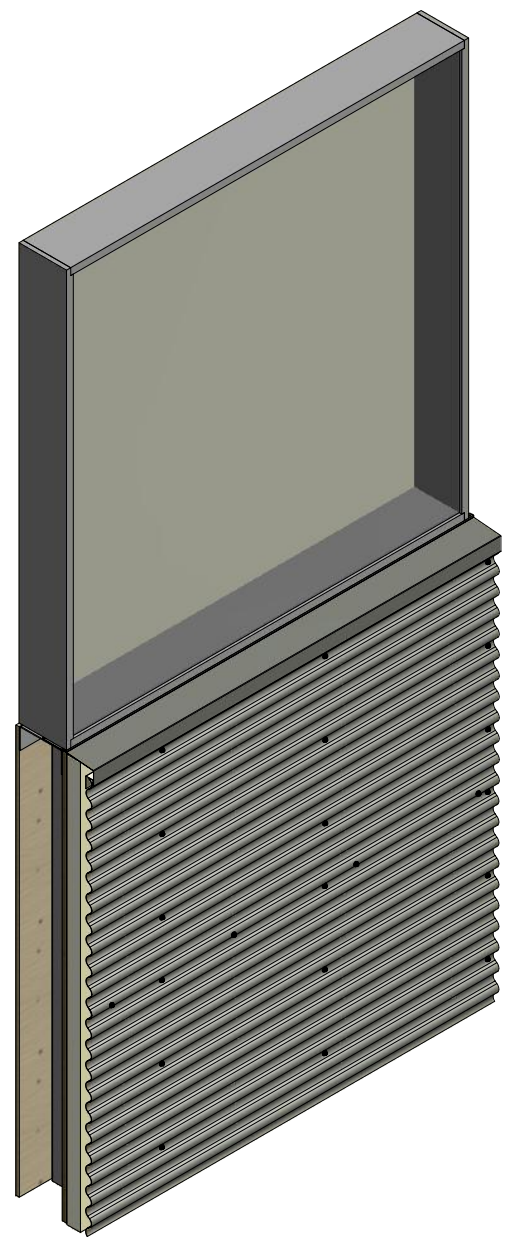
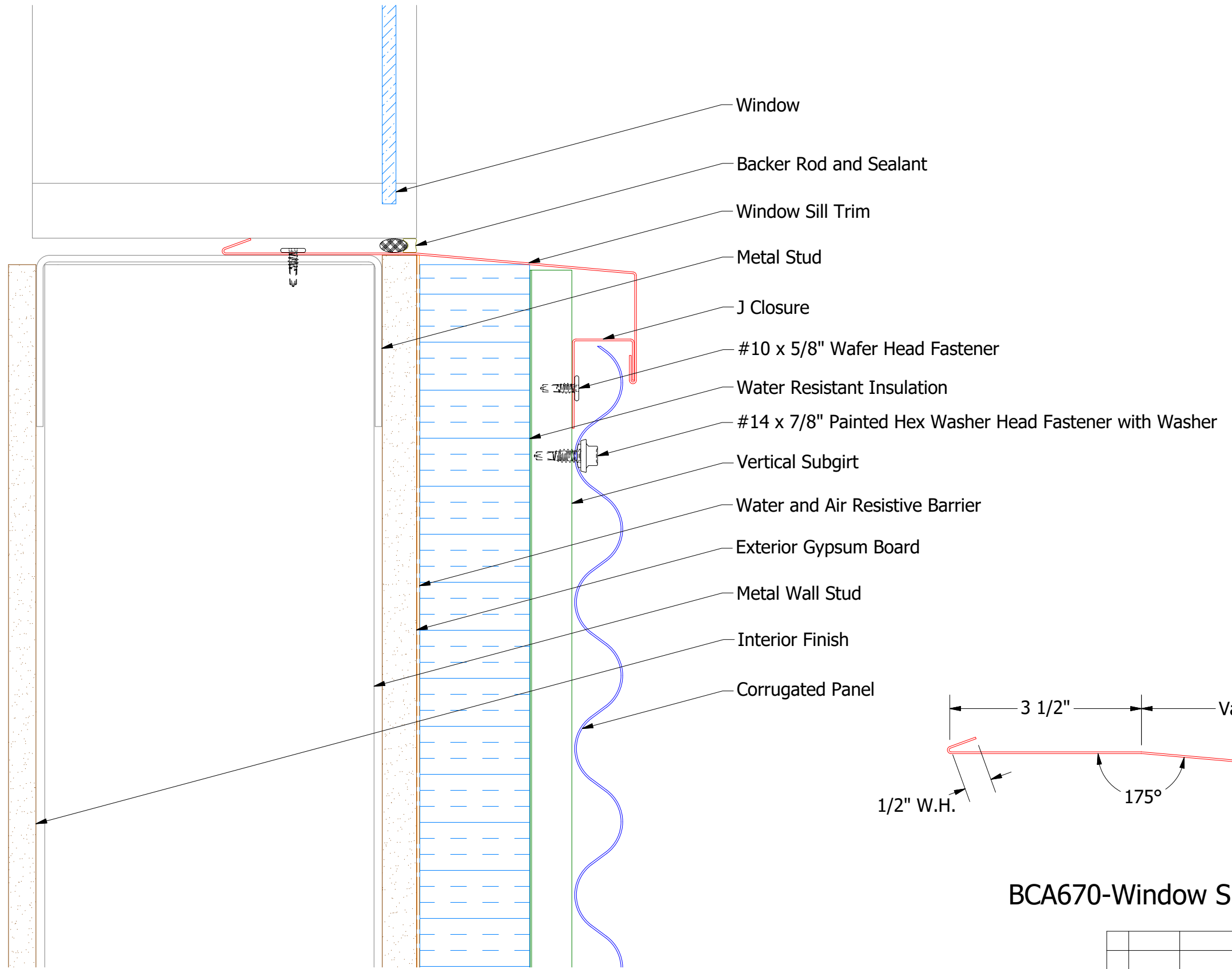
BCA118-J Channel

2 Stage Method of Weather Proofing

		ATAS INTERNATIONAL, INC Allentown PA 610-395-8445 Mesa AZ 480-558-7210	
TITLE Corrugated Panel Jamb Detail			
DWG. NO.		DR KRK	DATE 8/15/2014
MATERIAL		APP	DATE
		SH. SIZE B	SCALE X:X

Note: \* denotes color side.

Horizontal Panel



BCA670-Window Sill Trim

BCA270-J Closure

2 Stage Method of Weather Proofing



ATAS INTERNATIONAL, INC  
Allentown PA  
610-395-8445  
Mesa AZ  
480-558-7210

TITLE			
Corrugated Panel Window Sill Detail			
DWG. NO.		DR	DATE
		KRK	8/15/2014
APP		DATE	
MATERIAL		SH. SIZE	SCALE
		B	X:X

REV. NO.	DATE	DESCRIPTION OF REVISION	BY	APP