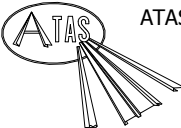


BWC374

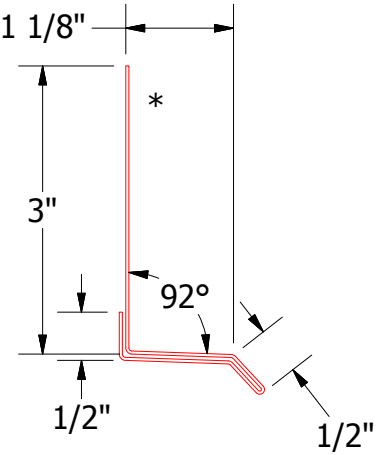
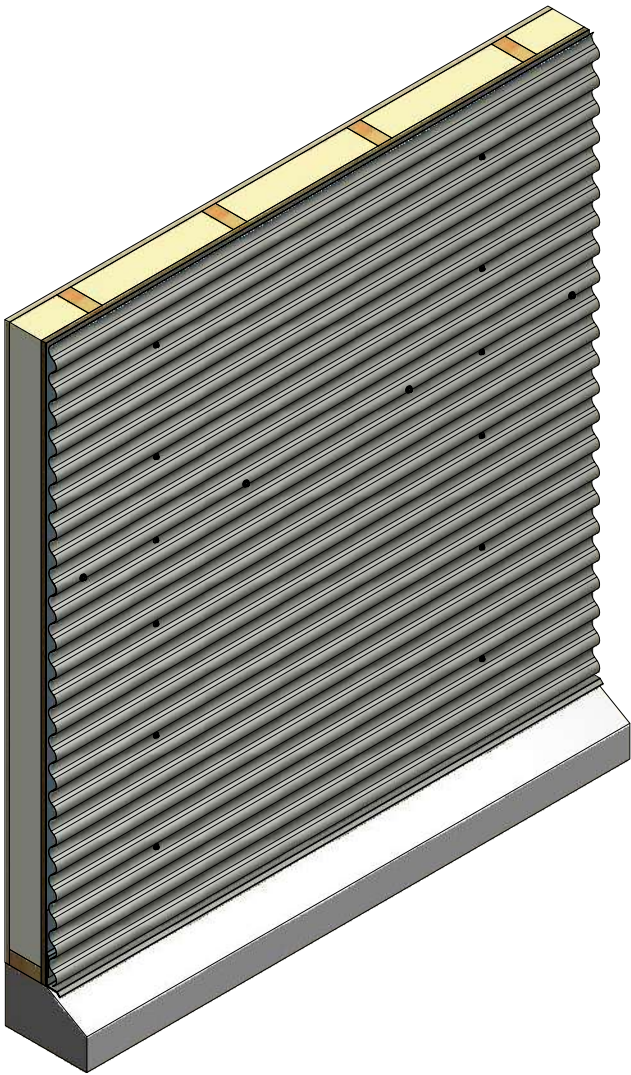
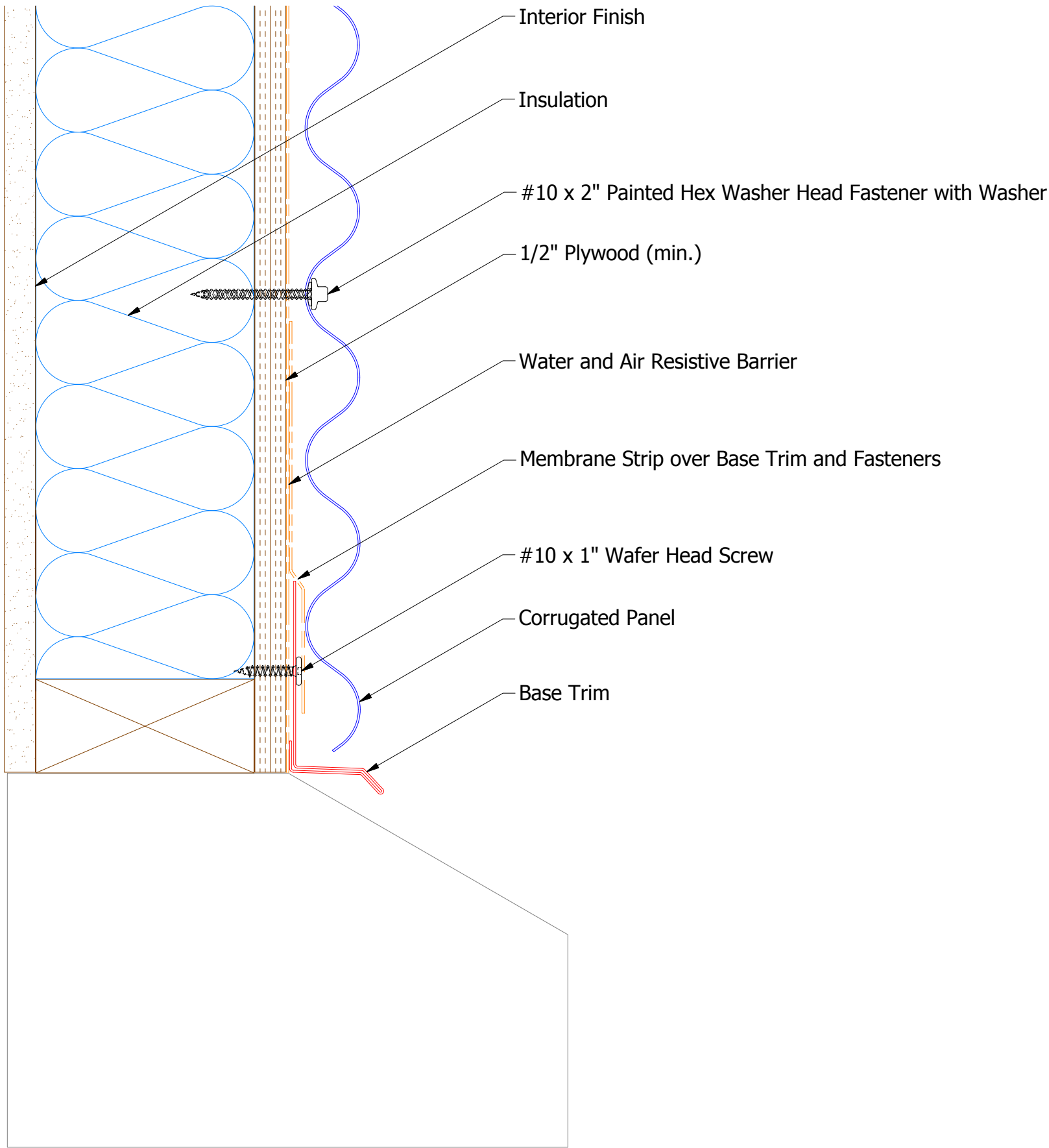
**Note:** This Detail is for Belvedere Corrugated Panel installed on a Wall.




ATAS INTERNATIONAL, INC  
Allentown PA  
610-395-8445  
Mesa AZ  
480-558-7210

TITLE		Belvedere Corrugated Fastening Detail	
DWG. NO.	DR	KRK	DATE
	APP	DAS	DATE
REV. NO.	DATE	DESCRIPTION OF REVISION	BY APP
	SH. SIZE	B	SCALE
			X:X

Horizontal Panel



BCA661-Base Trim

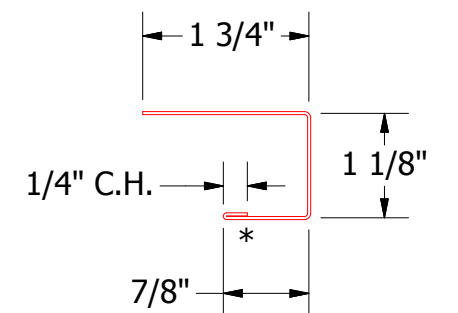
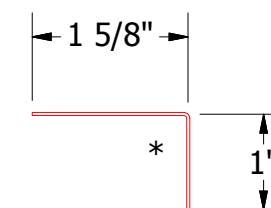
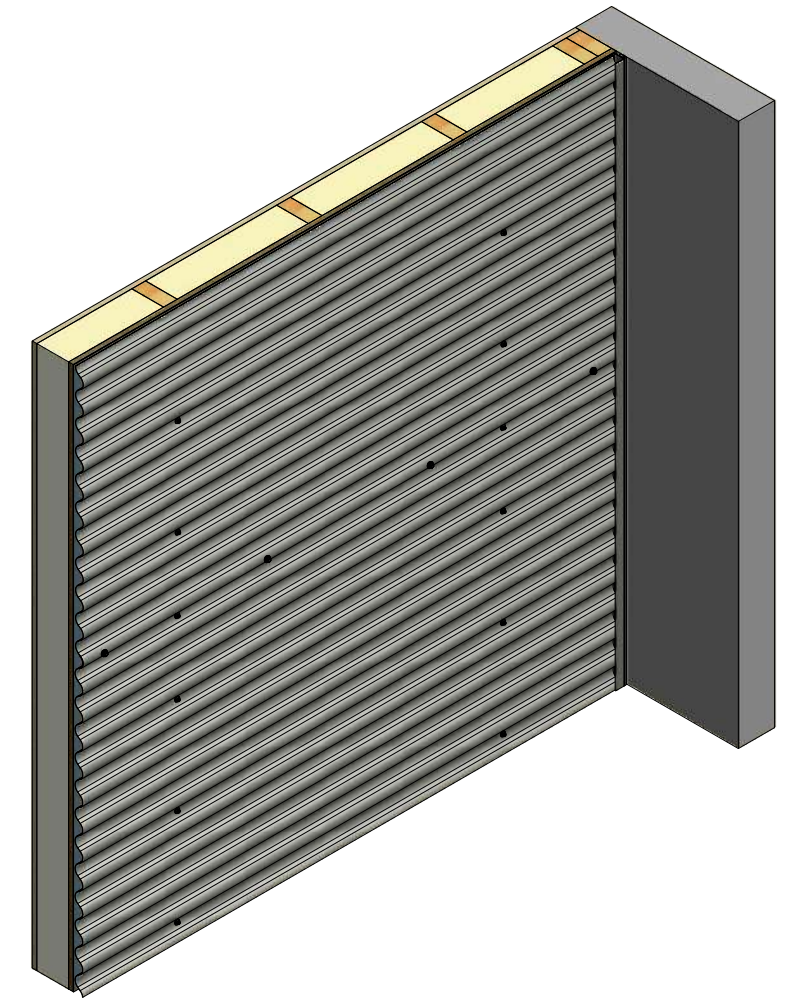
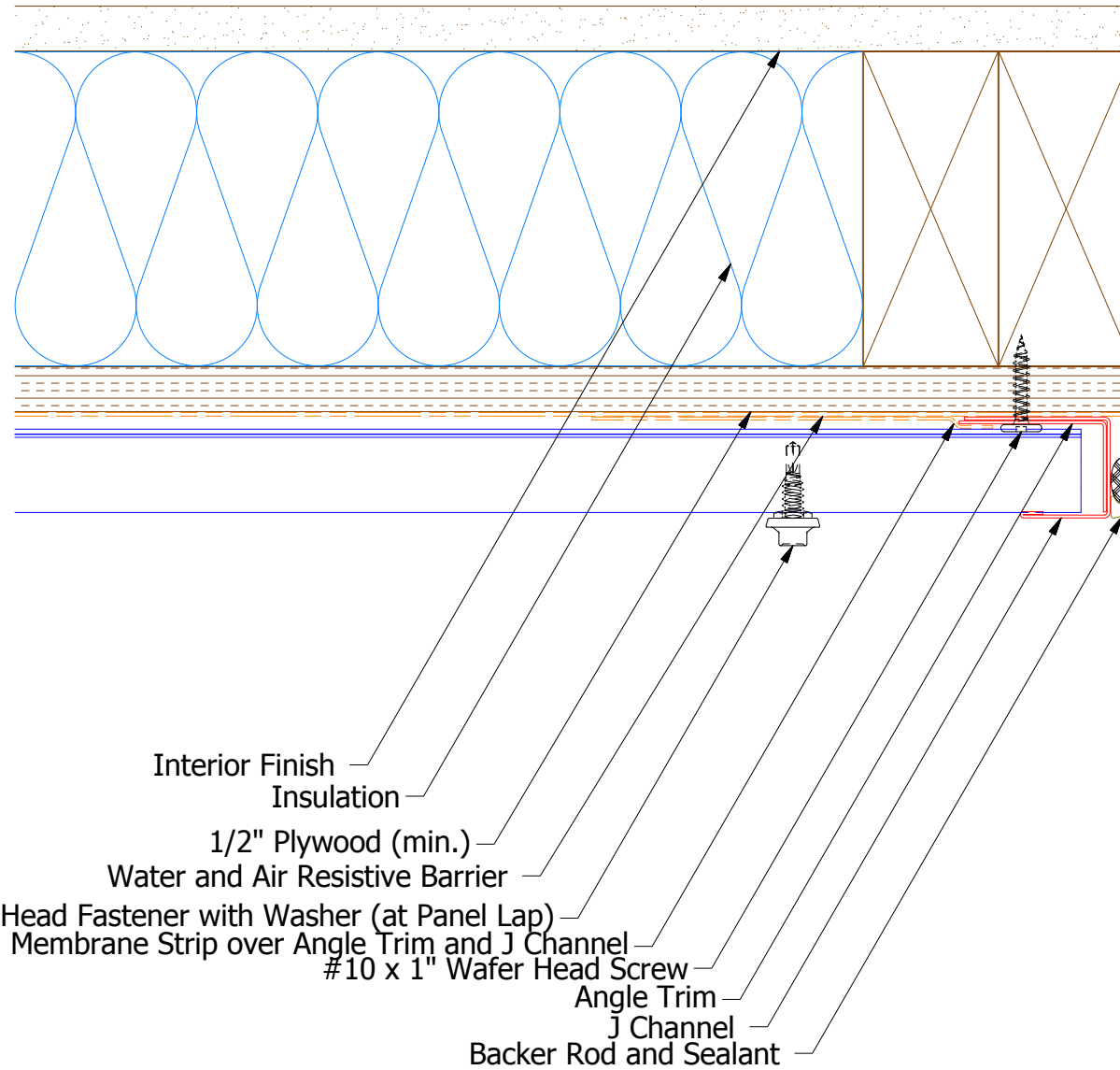


ATAS INTERNATIONAL, INC  
Allentown PA  
610-395-8445  
Mesa AZ  
480-558-7210

TITLE Belvedere Corrugated Base Detail			
DWG. NO.		DR KRK	DATE 8/18/2014
MATERIAL		APP DAS	DATE 7/29/16
REV. NO.	DATE	DESCRIPTION OF REVISION	BY APP SH. SIZE B SCALE X:X

REV. NO.	DATE	DESCRIPTION OF REVISION	BY	APP

## Horizontal Panel

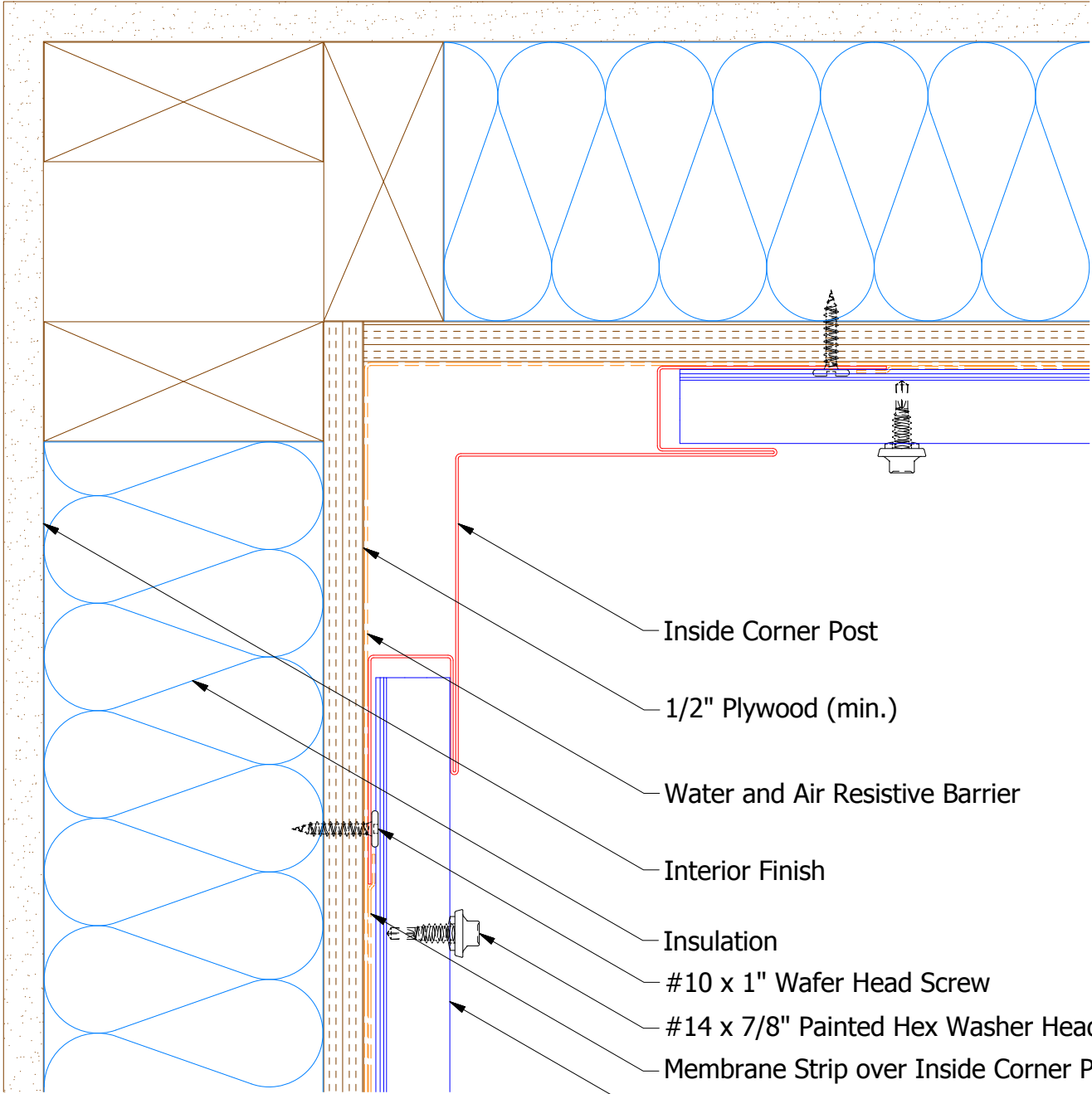


BCA118-J Channel

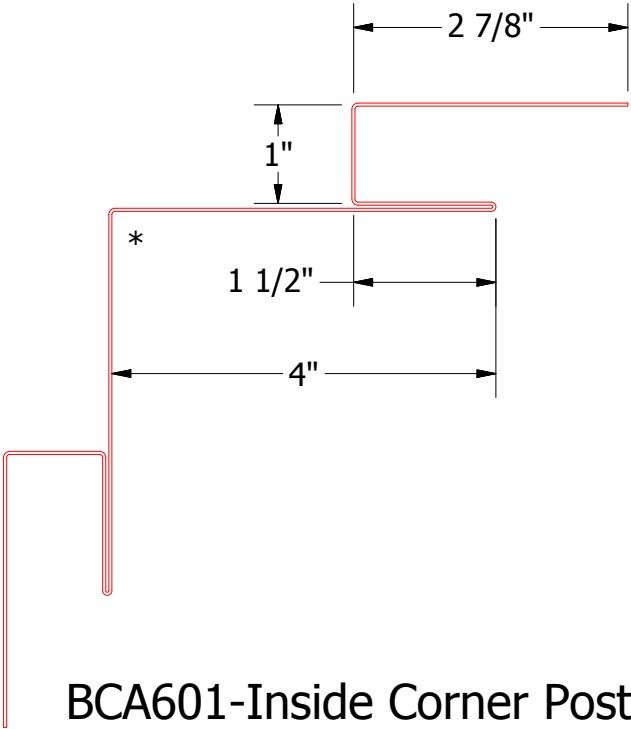
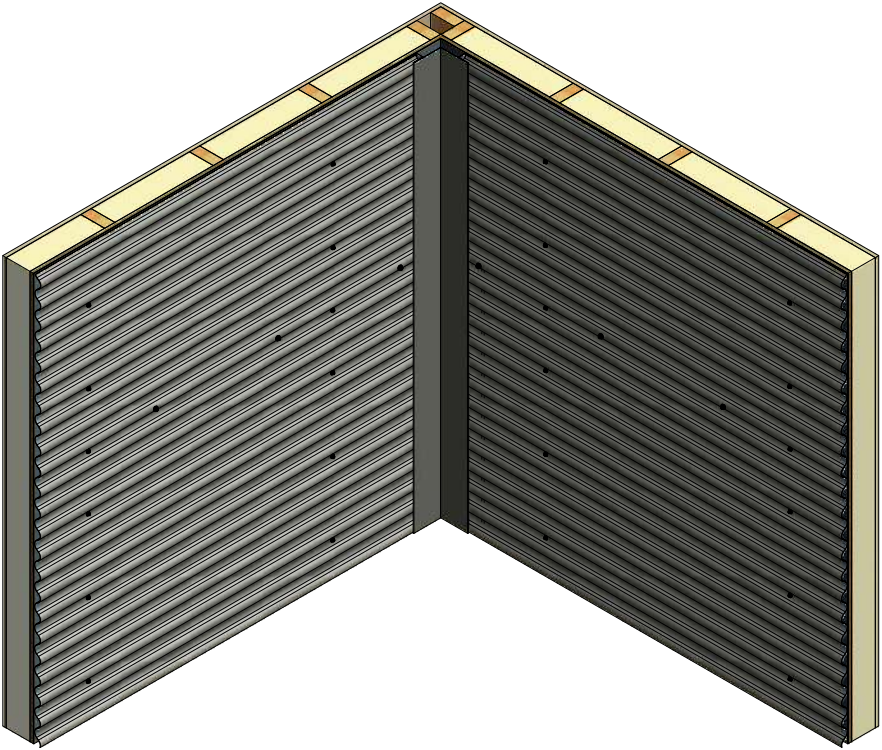
## BCA680-Angle Trim

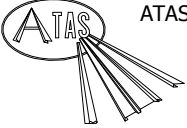
					TITLE <b>Belvedere Corrugated Endwall Detail</b>			
					DWG. NO.		DR <b>KRK</b>	DATE <b>5/8/2015</b>
					MATERIAL		APP <b>DAS</b>	DATE
REV. NO.	DATE	DESCRIPTION OF REVISION	BY	APP			SH. SIZE <b>B</b>	SCALE <b>X:X</b>

Horizontal Panel



- Inside Corner Post
- 1/2" Plywood (min.)
- Water and Air Resistive Barrier
- Interior Finish
- Insulation
- #10 x 1" Wafer Head Screw
- #14 x 7/8" Painted Hex Washer Head Fastener with Washer (at Panel Lap)
- Membrane Strip over Inside Corner Post
- Corrugated Panel





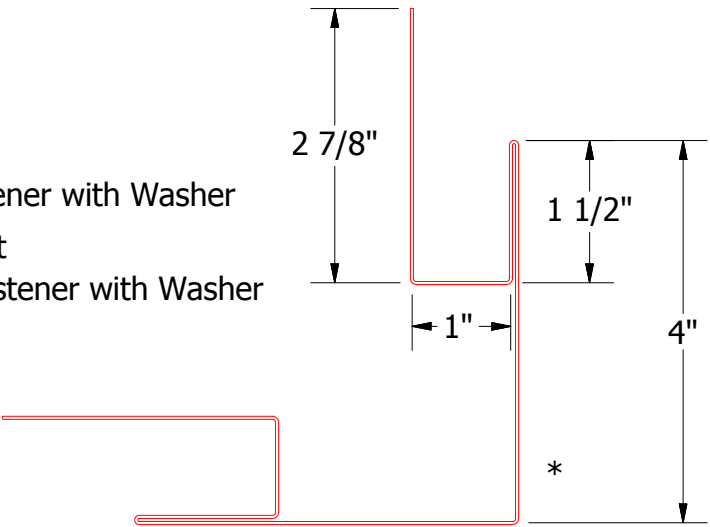
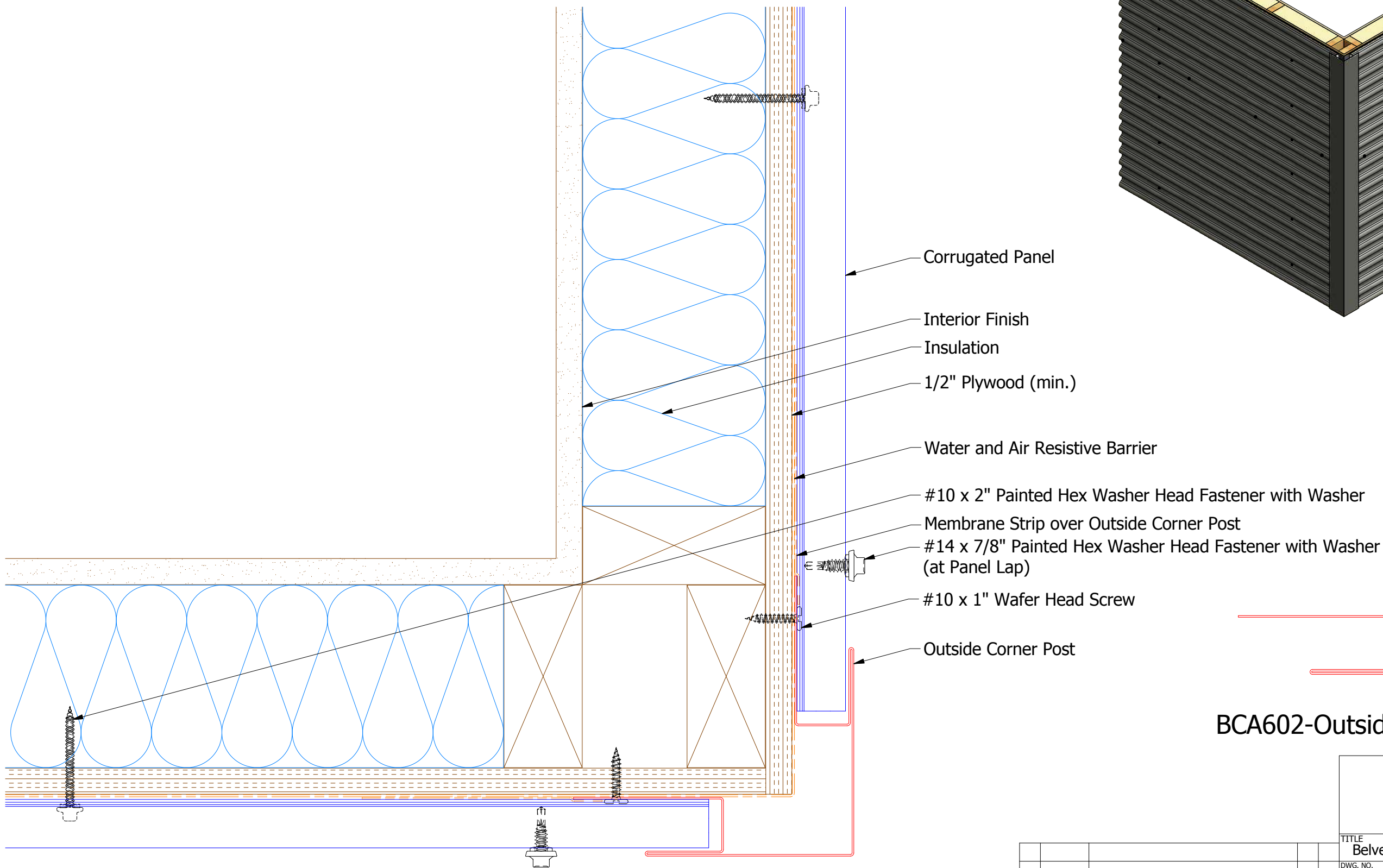
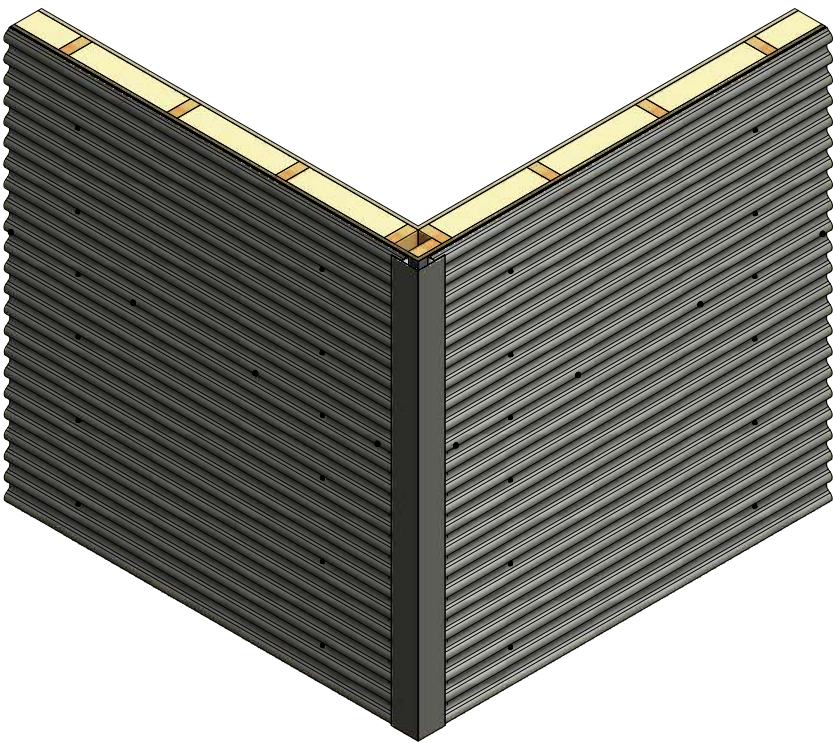
ATAS INTERNATIONAL, INC  
Allentown PA  
610-395-8445  
Mesa AZ  
480-558-7210

TITLE Belvedere Corrugated Inside Corner Detail			
DWG. NO.		DR KRK	DATE 5/8/2015
MATERIAL		APP DAS	DATE 7/29/16
REV. NO.	DATE	DESCRIPTION OF REVISION	BY APP
SH. SIZE B		SCALE X:X	

REV. NO.	DATE	DESCRIPTION OF REVISION	BY	APP



Horizontal Panel



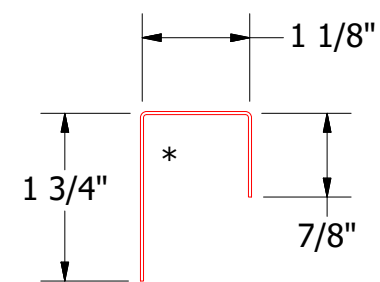
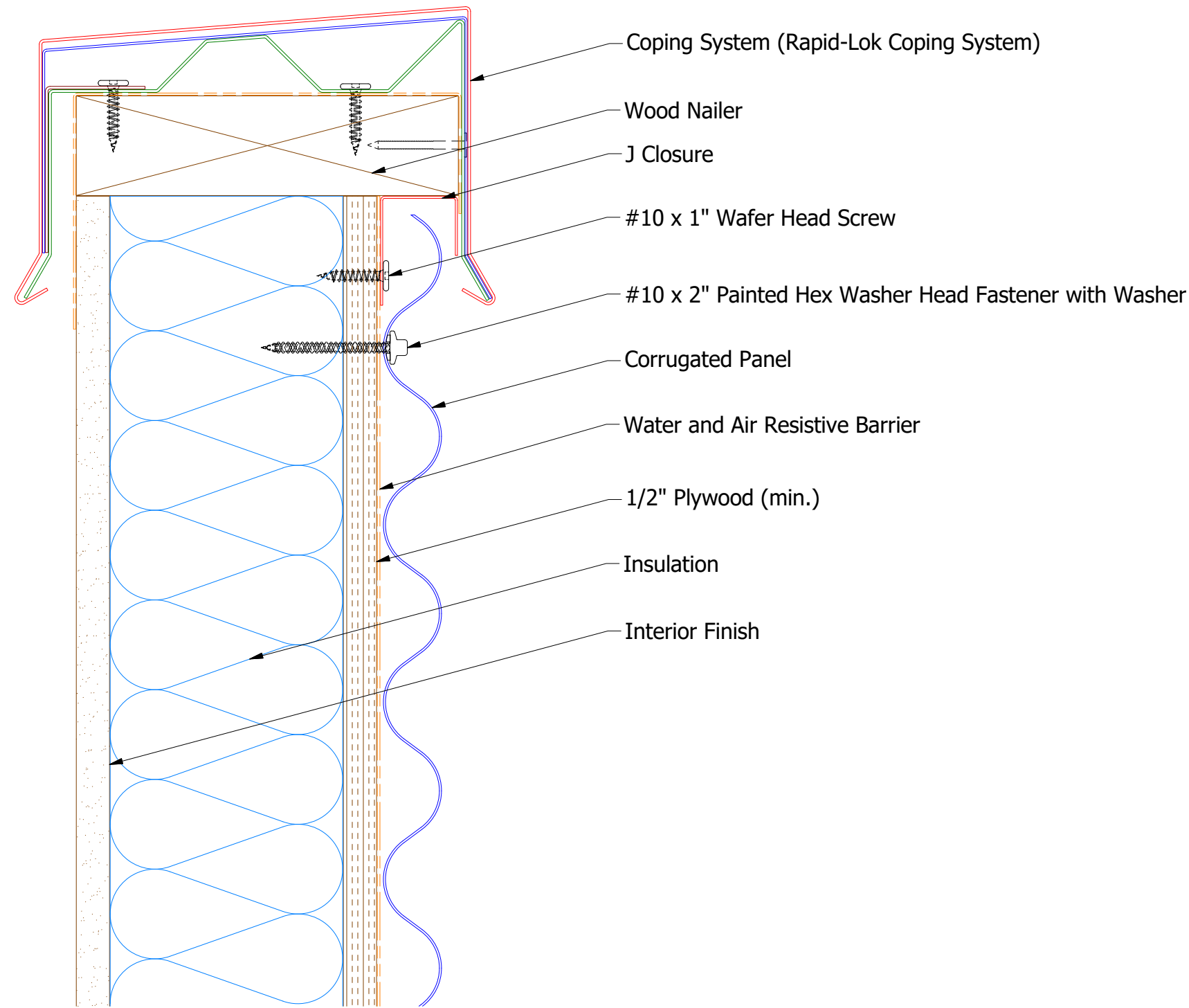
BCA602-Outside Corner Post

				TITLE Belvedere Corrugated Outside Corner Detail			
				DWG. NO.	DR KRK	DATE	5/11/2015
				MATERIAL	APP DAS	DATE	7/29/16
REV. NO.	DATE	DESCRIPTION OF REVISION	BY	APP	SH. SIZE	B	SCALE X:X




ATAS INTERNATIONAL, INC  
Allentown PA  
610-395-8445  
Mesa AZ  
480-558-7210

Horizontal Panel



BCA270 - J Closure

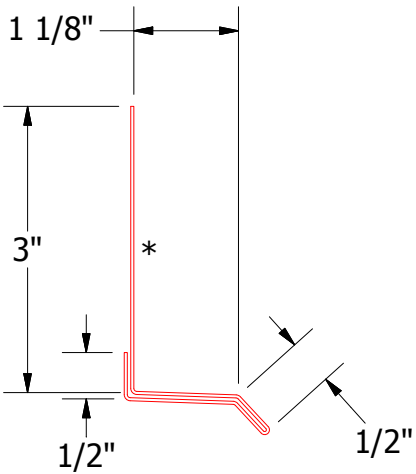
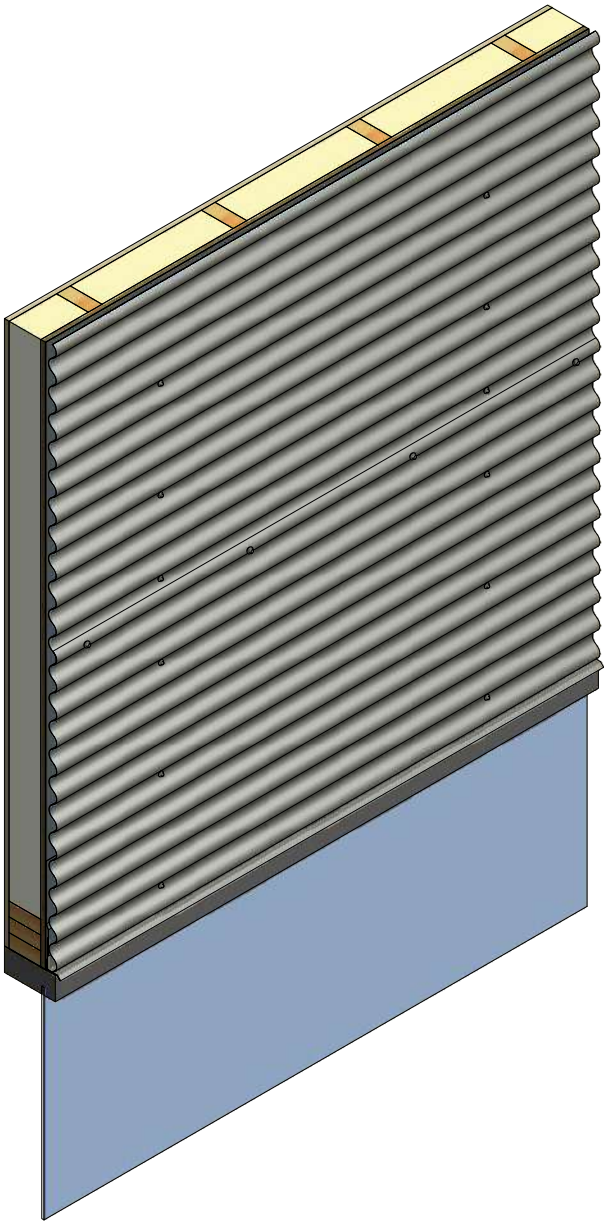
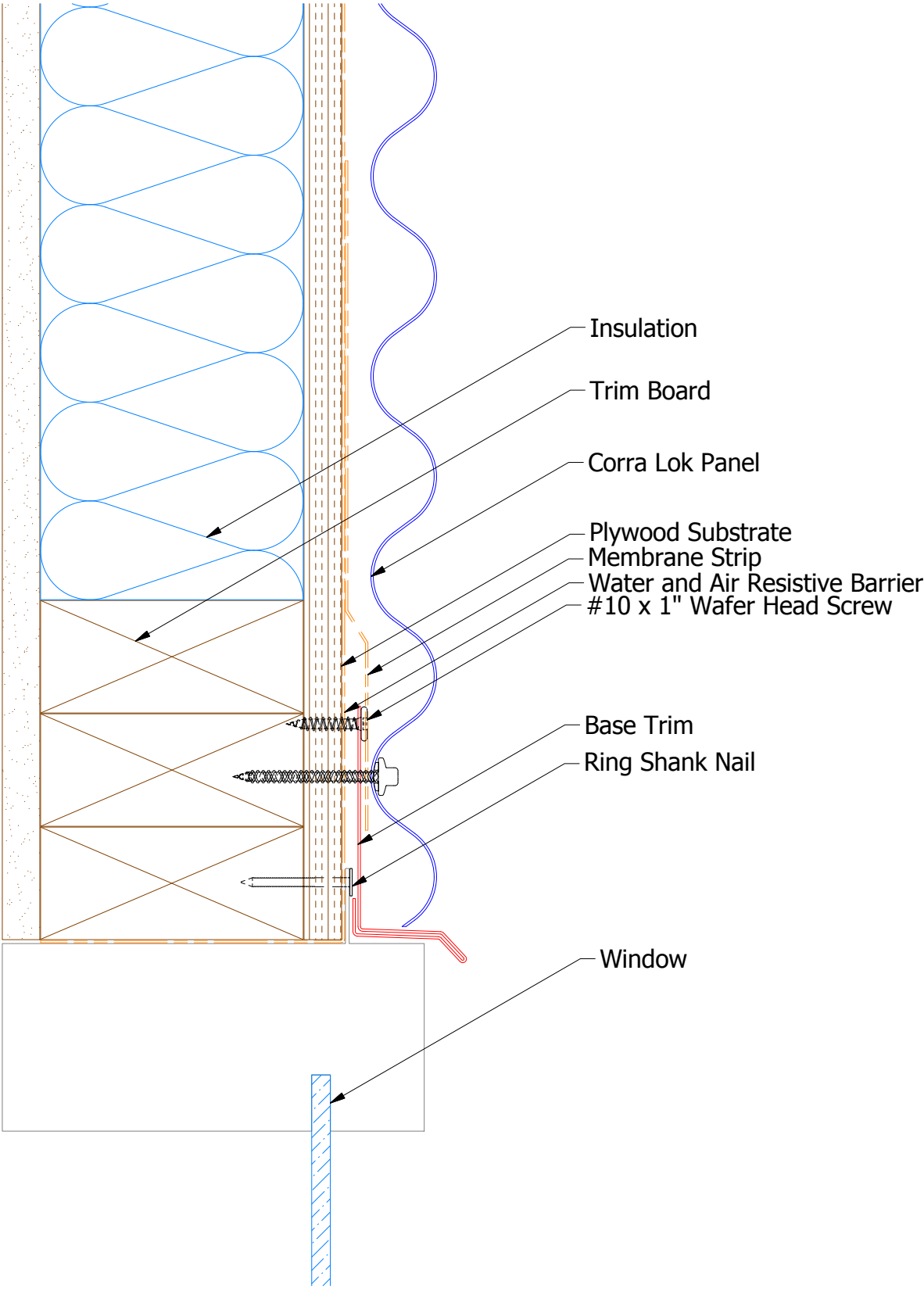


ATAS INTERNATIONAL, INC  
Allentown PA  
610-395-8445  
Mesa AZ  
480-558-7210


TITLE Belvedere Corrugated Top of Wall Detail			
DWG. NO.		DR KRK	DATE 5/8/2015
MATERIAL		APP DAS	DATE 7/29/16
REV. NO.	DATE	DESCRIPTION OF REVISION	BY APP
			SH. SIZE B
			SCALE X:X

REV. NO.	DATE	DESCRIPTION OF REVISION	BY	APP

Horizontal Panel



BCA661 - Base Trim



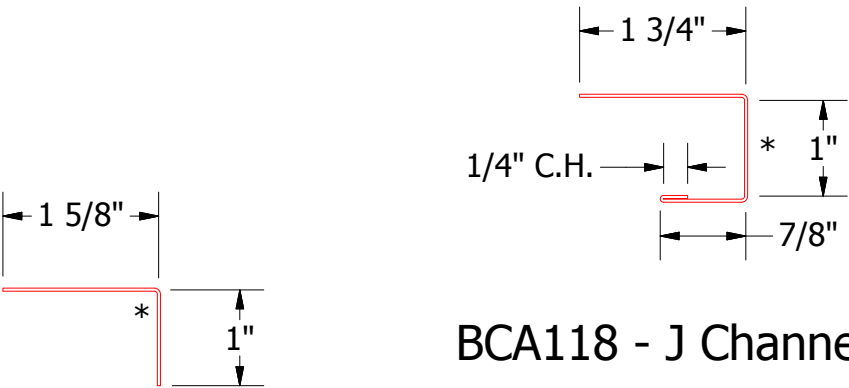
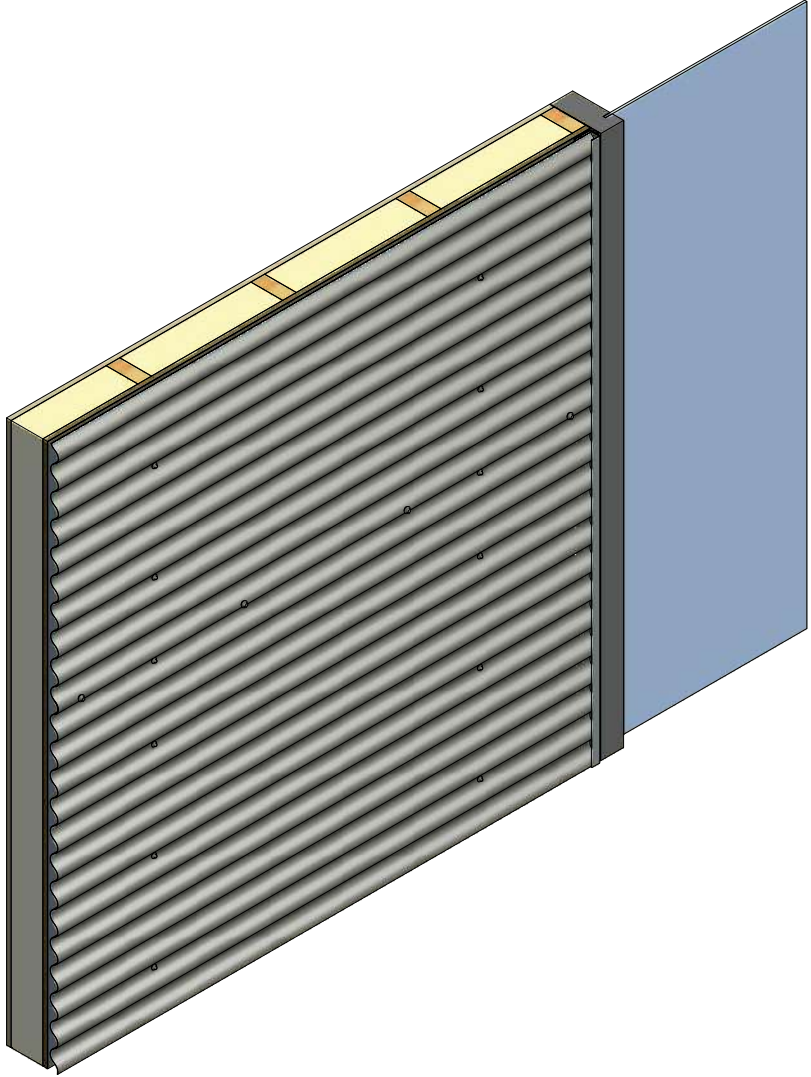
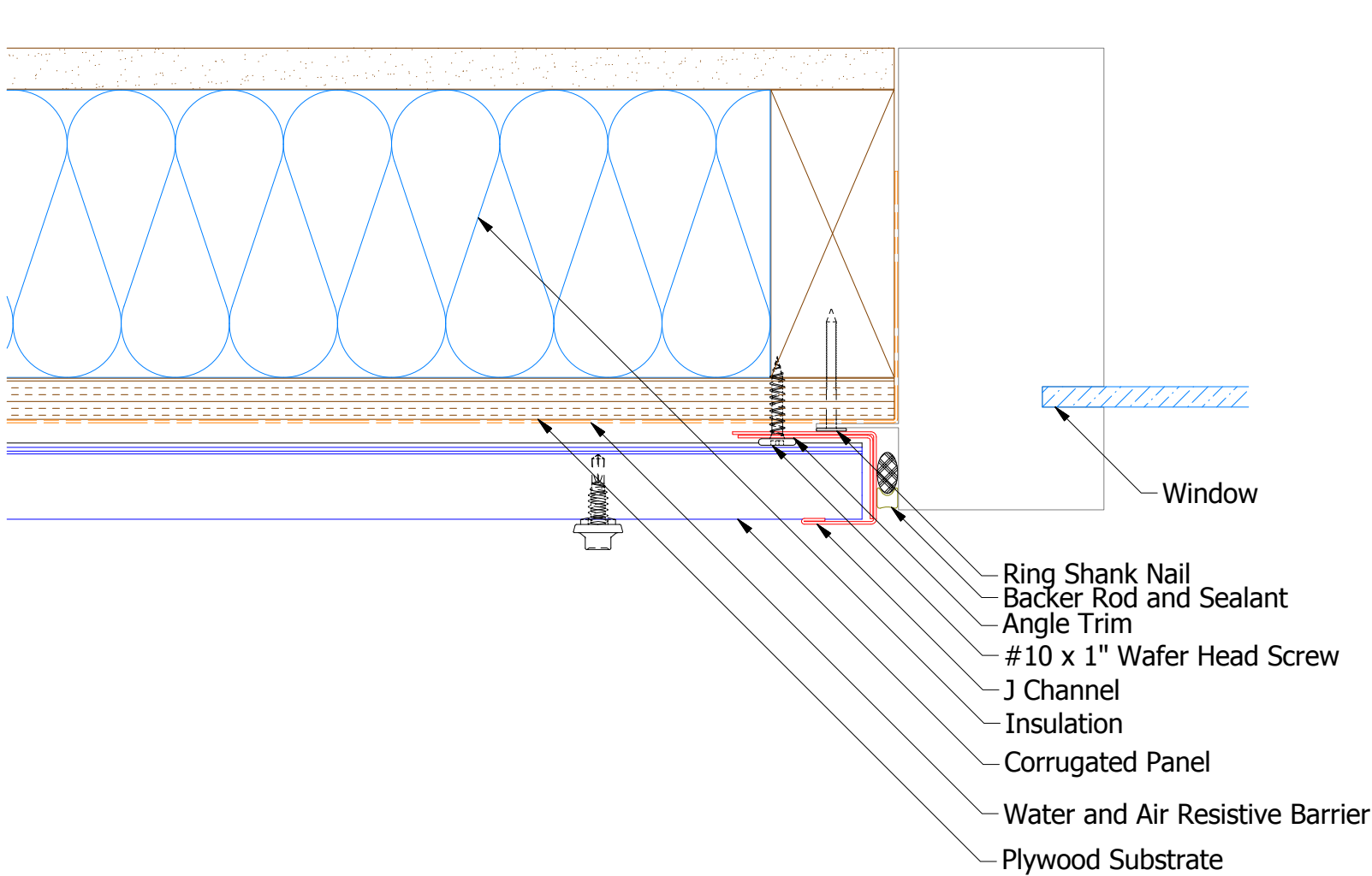
ATAS INTERNATIONAL, INC  
Allentown PA  
610-395-8445  
Mesa AZ  
480-558-7210

TITLE			
Corra Lok Head Window Flange Detail			
DWG. NO.		DR	DATE
		MBP	7/25/2018
APP		DATE	
MATERIAL		SH. SIZE	SCALE
		B	X:X

REV. NO.	DATE	DESCRIPTION OF REVISION	BY	APP



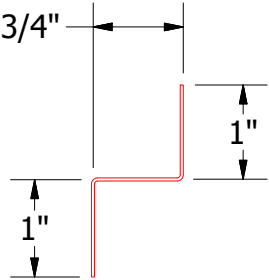
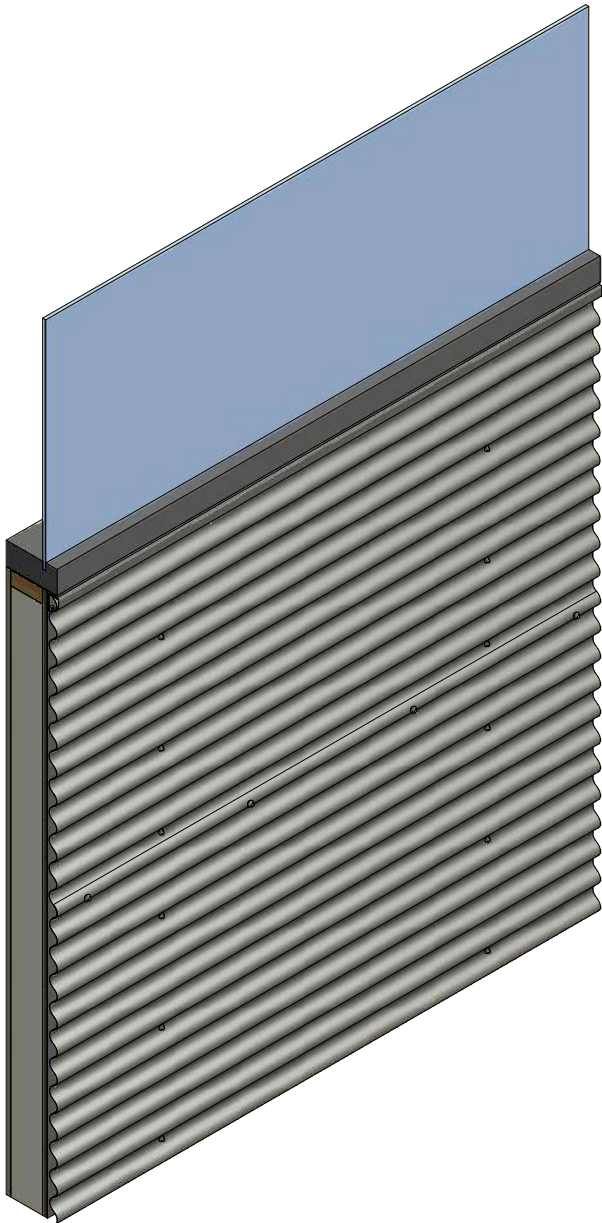
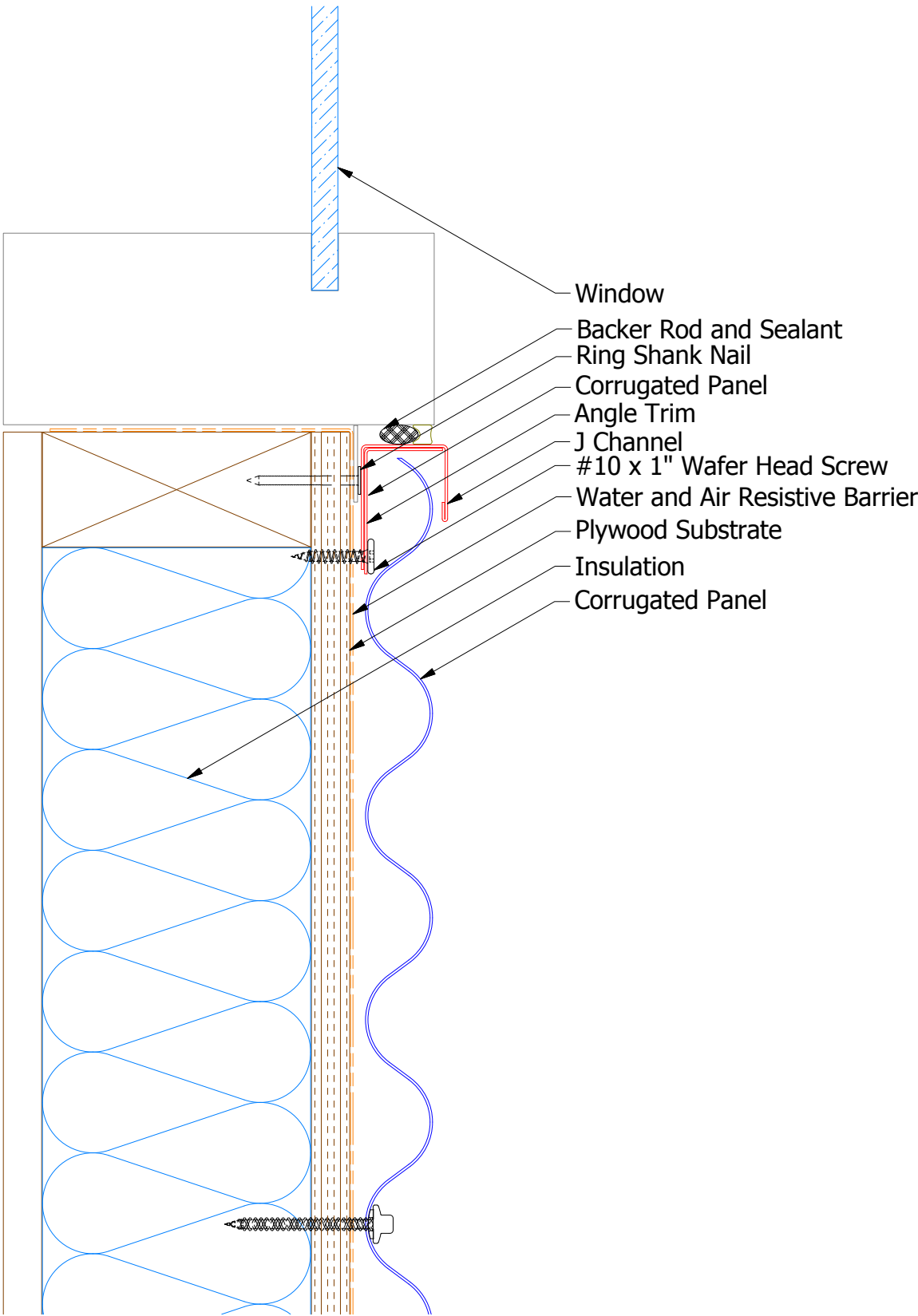
Horizontal Panel



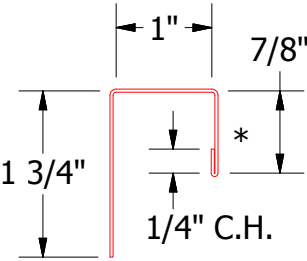
					<div>ATAS</div> <div>ATAS INTERNATIONAL, INC</div> <div>Allentown PA</div> <div>610-395-8445</div> <div>Mesa AZ</div> <div>480-558-7210</div>		
					TITLE Corrugated Jamb Window Flange Detail		
		DWG. NO.		DR	MBP	DATE	7/25/2018
				APP		DATE	
		MATERIAL		SH. SIZE	B	SCALE	X:X
REV. NO.	DATE	DESCRIPTION OF REVISION		BY	APP		



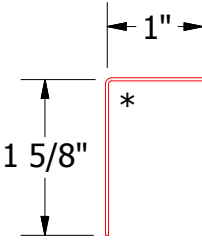
Horizontal Panel




BCA681 - Support Z



BCA118 - J Channel



BCA680 - Angle Trim

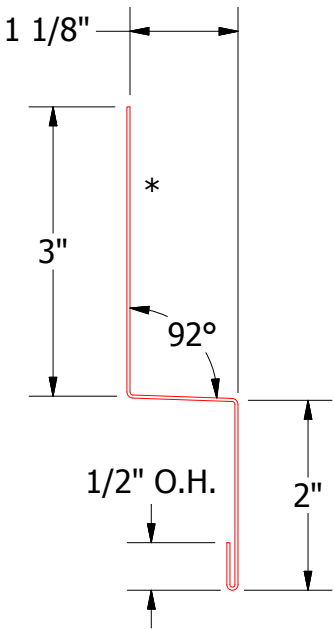
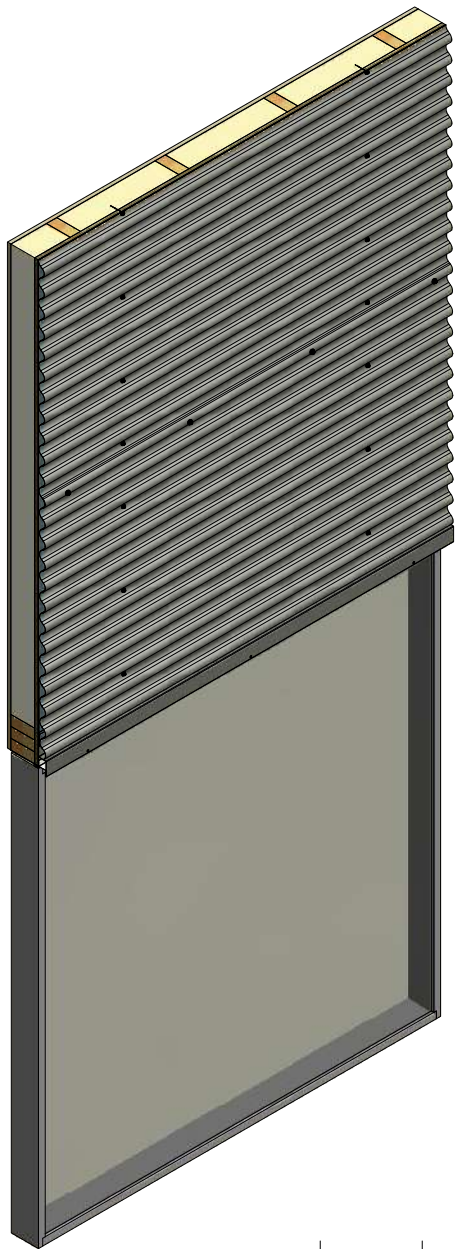
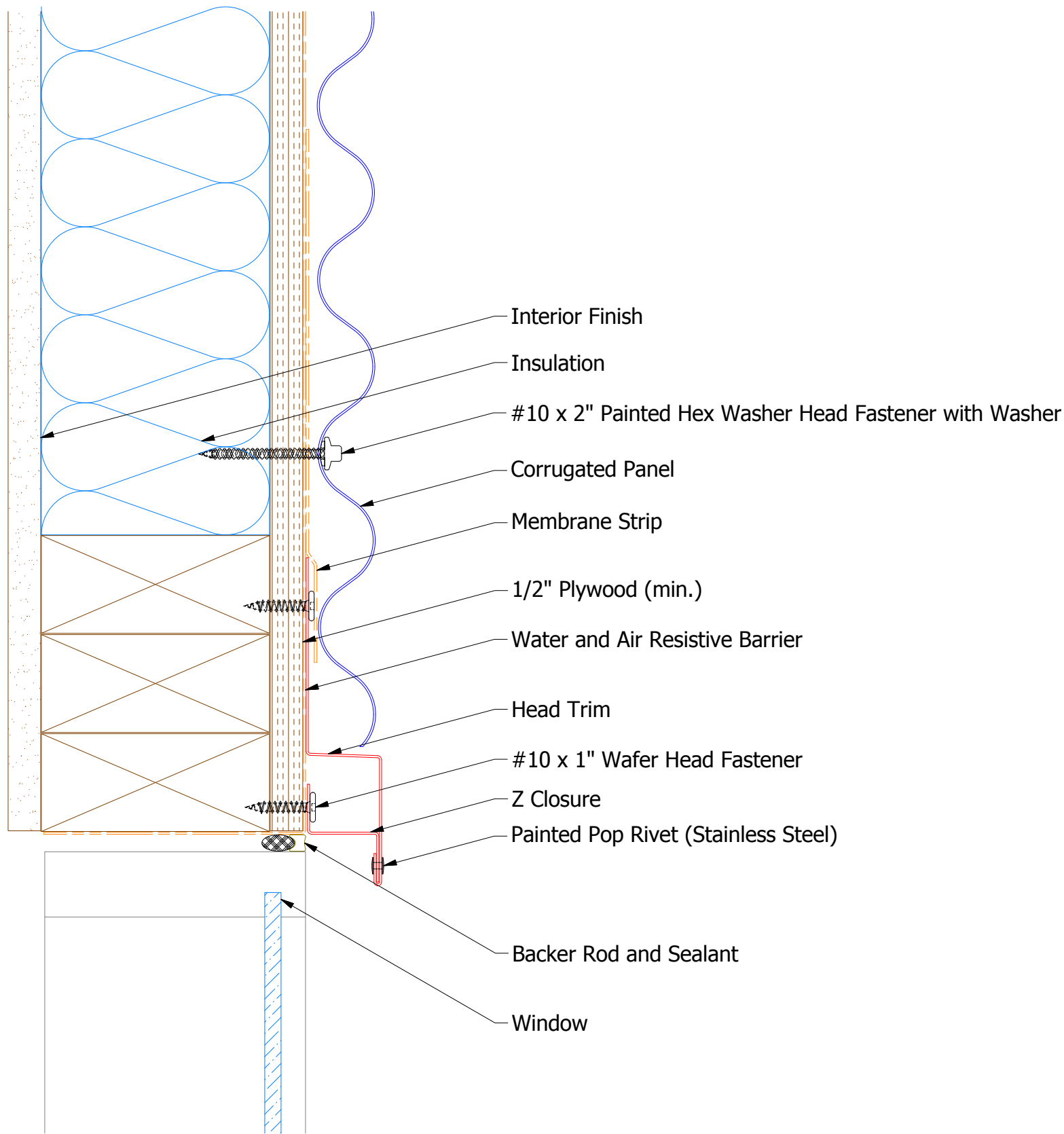


ATAS INTERNATIONAL, INC  
Allentown PA  
610-395-8445  
Mesa AZ  
480-558-7210

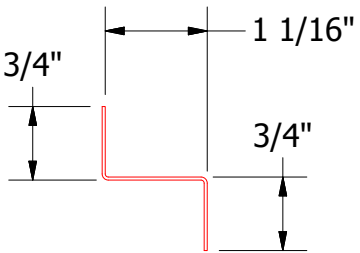
TITLE Corrugated Window Sill Flange Detail			
DWG. NO.		DR MBP	DATE 7/26/2018
MATERIAL		APP	DATE
REV. NO.	DATE	DESCRIPTION OF REVISION	BY APP
SH. SIZE B		SCALE X:X	

REV. NO.	DATE	DESCRIPTION OF REVISION	BY	APP

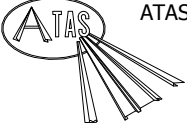
Horizontal Panel



Head Trim



Z Closure

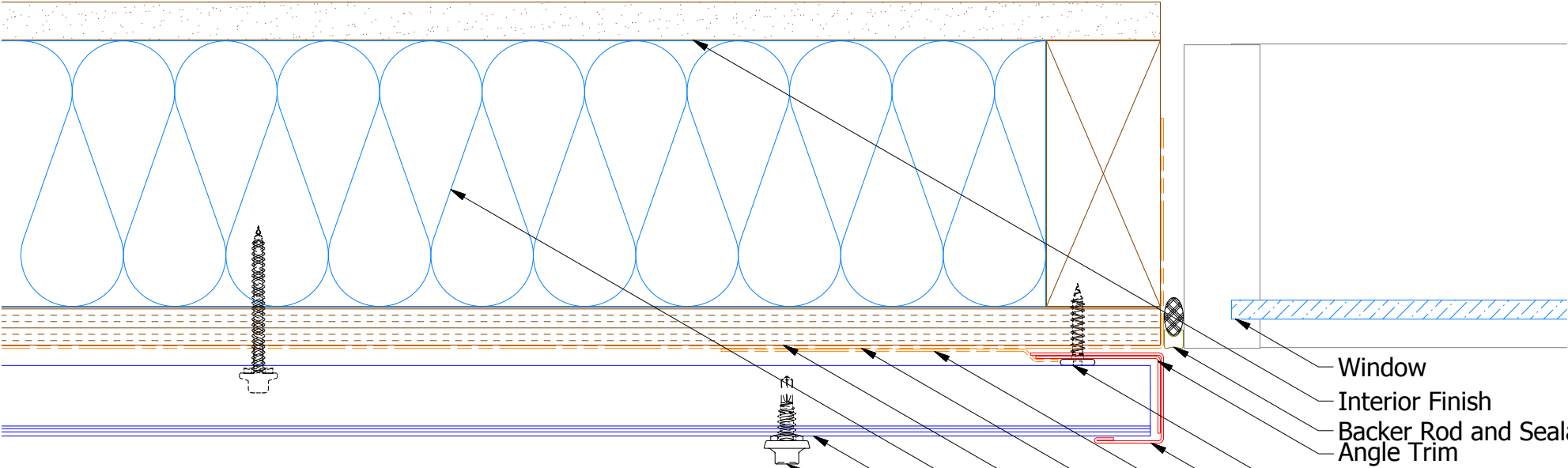


ATAS INTERNATIONAL, INC  
Allentown PA  
610-395-8445  
Mesa AZ  
480-558-7210

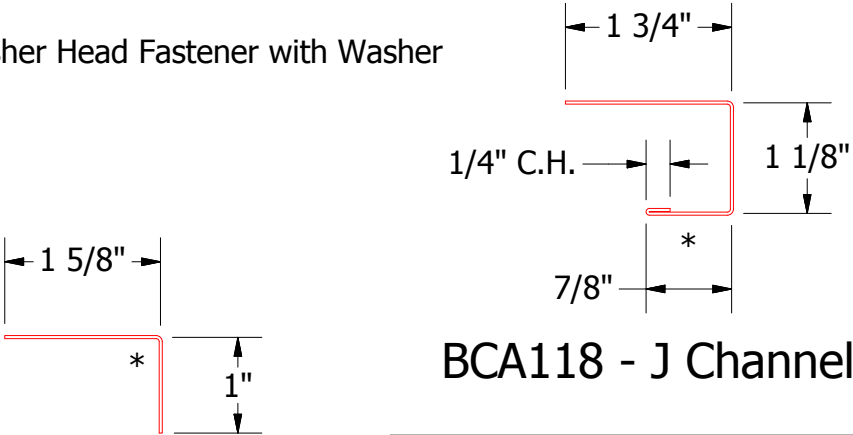
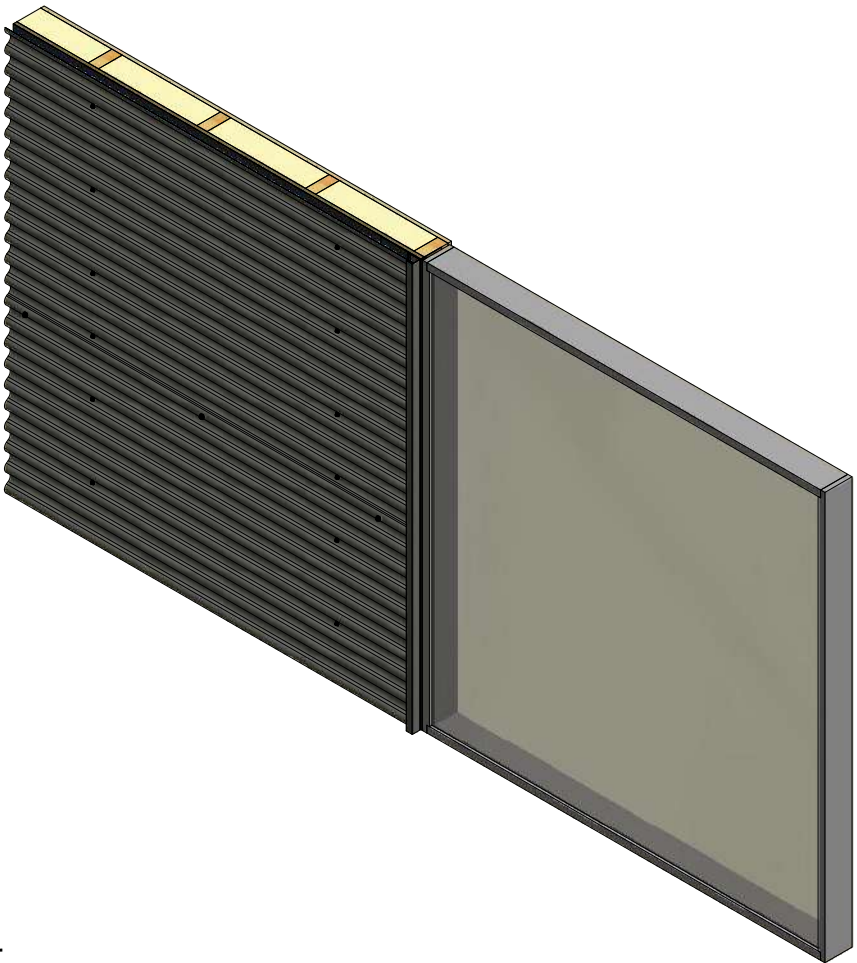
TITLE Corrugated Existing Head Detail			
DWG. NO.		DR DMR	DATE 7/10/2018
APP		DATE	
MATERIAL		SH. SIZE B	SCALE X:X

REV. NO.	DATE	DESCRIPTION OF REVISION	BY	APP

Horizontal Panel



- Window
- Interior Finish
- Backer Rod and Sealant
- Angle Trim
- #10 x 1" Wafer Head Fastener
- J Channel
- Membrane Strip
- Water and Air Resistive Barrier
- 1/2" Plywood (min.)
- Insulation
- Corrugated Panel
- #14 x 7/8" Painted Hex Washer Head Fastener with Washer



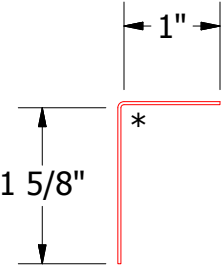
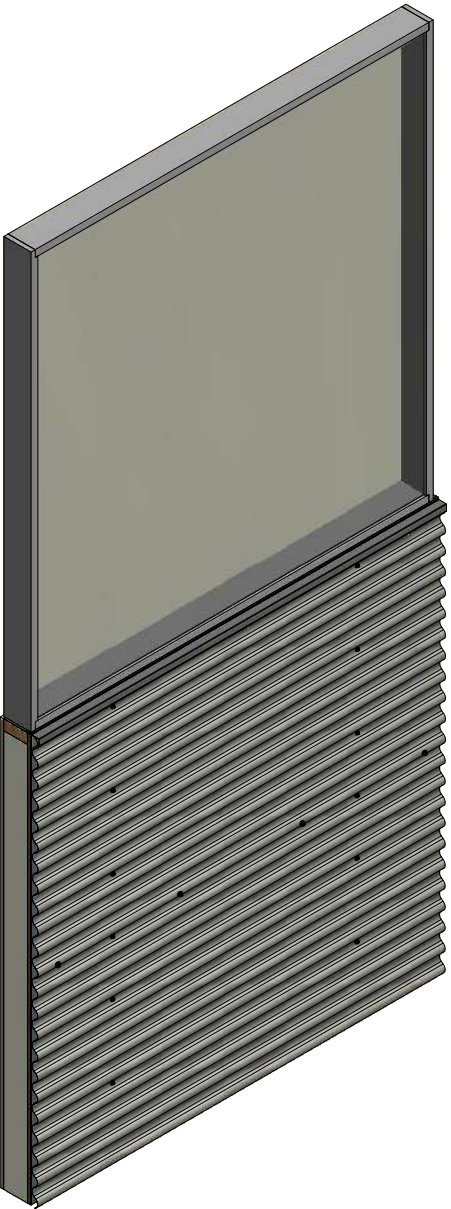
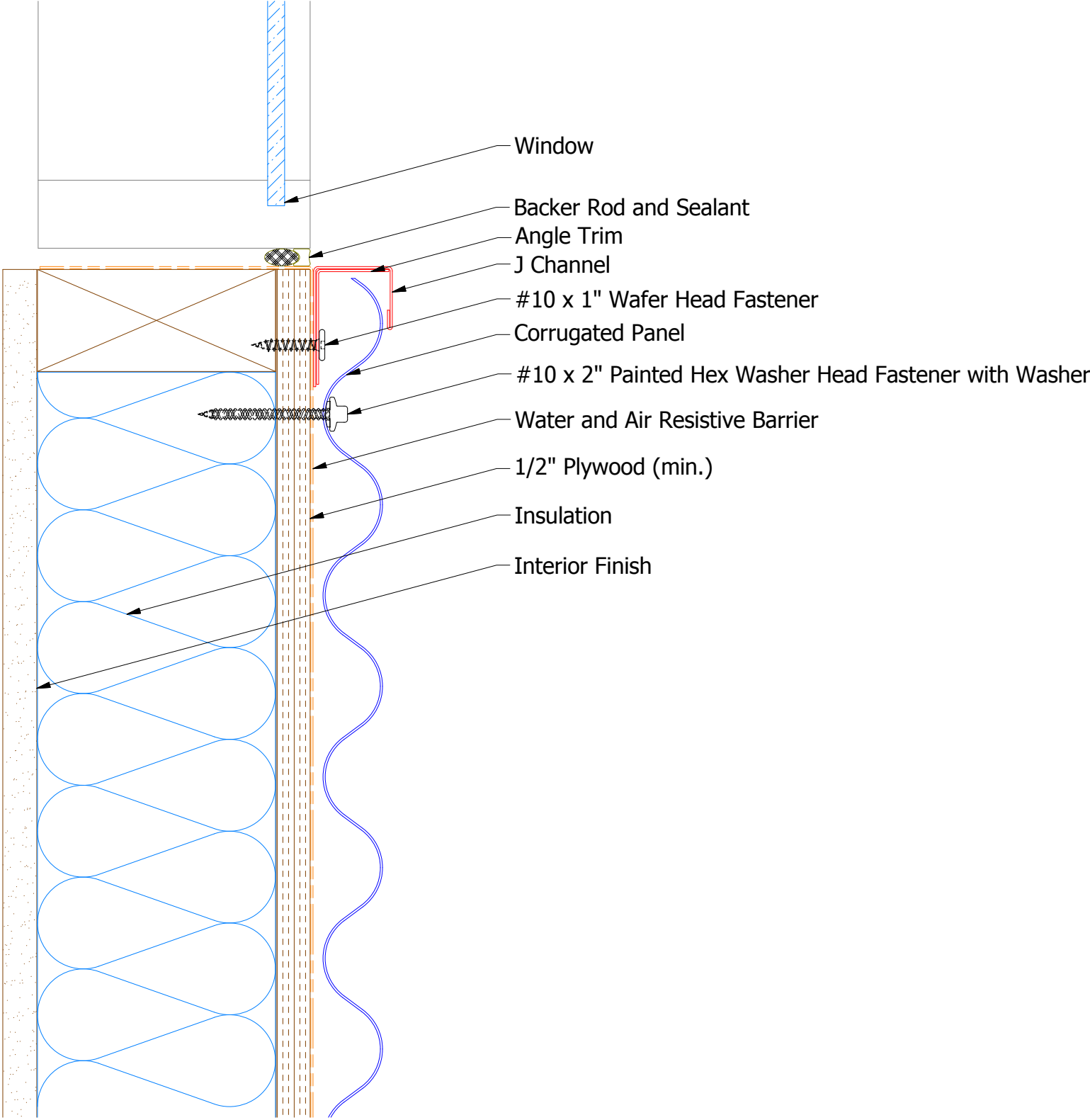
BCA680 - Angle Trim

BCA118 - J Channel

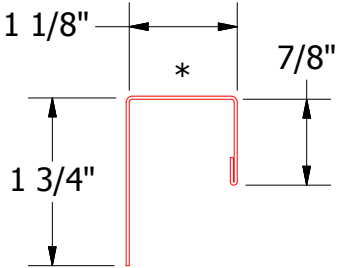
							Corrugated Existing Jamb Detail	
					DWG. NO.		DR	DATE
							DMR	7/11/2018
					MATERIAL		APP	DATE
REV. NO.	DATE	DESCRIPTION OF REVISION			BY	APP	SH. SIZE	SCALE
							B	X:X

ATAS  
ATAS INTERNATIONAL, INC  
Allentown PA  
610-395-8445  
Mesa AZ  
480-558-7210

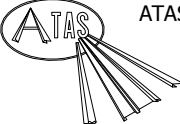
Horizontal Panel



BCA680 - Angle Trim



BCA118 - J Channel



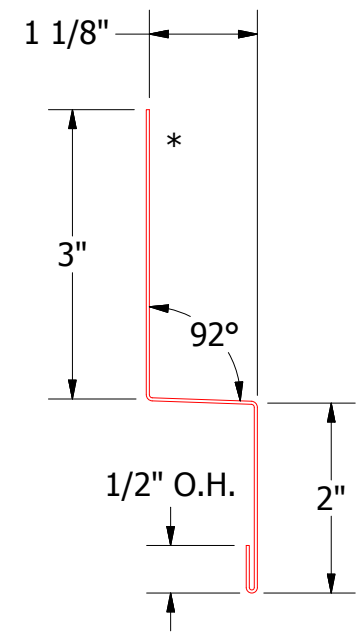
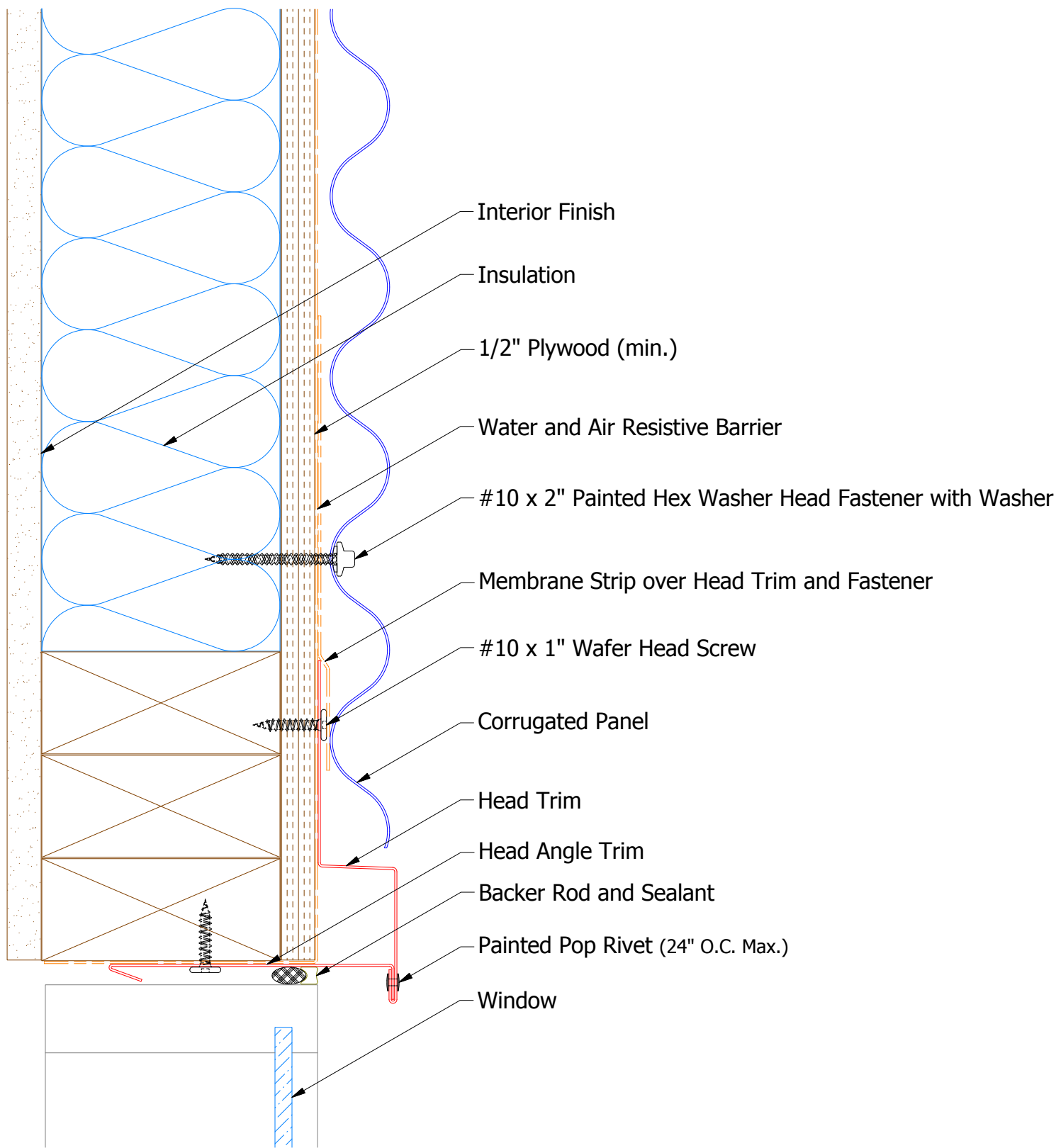
ATAS INTERNATIONAL, INC  
Allentown PA  
610-395-8445  
Mesa AZ  
480-558-7210

TITLE Corrugated Existing Window Sill Detail			
DWG. NO.		DR DMR	DATE 7/12/2018
MATERIAL		APP	DATE
REV. NO.	DATE	DESCRIPTION OF REVISION	BY APP
SH. SIZE B		SCALE X:X	

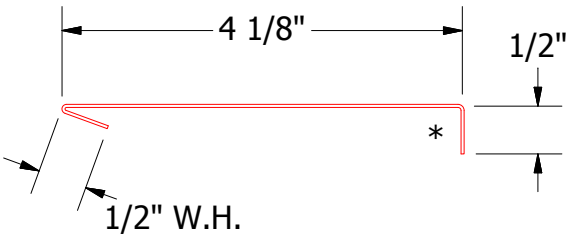
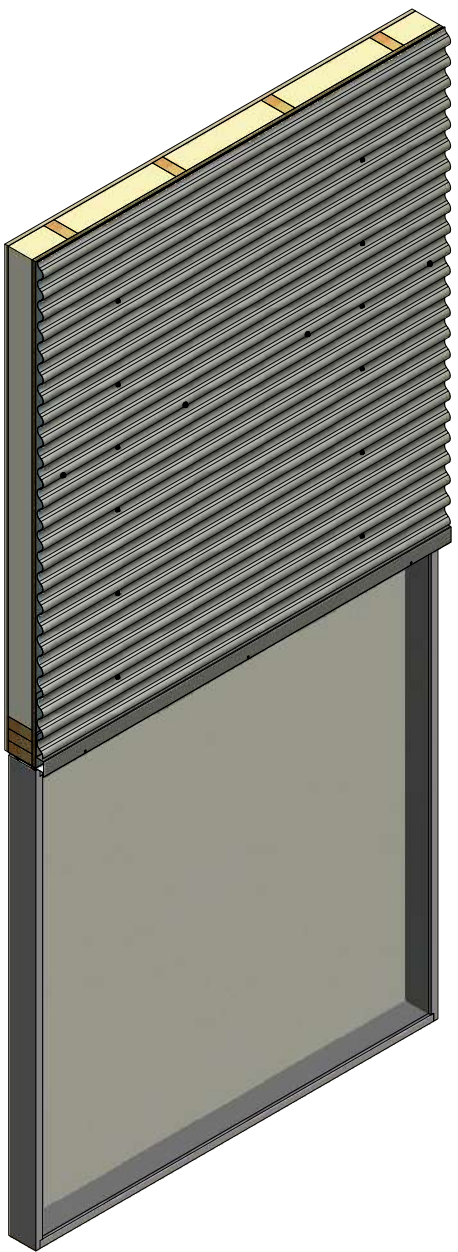
REV. NO.	DATE	DESCRIPTION OF REVISION	BY	APP




Horizontal Panel



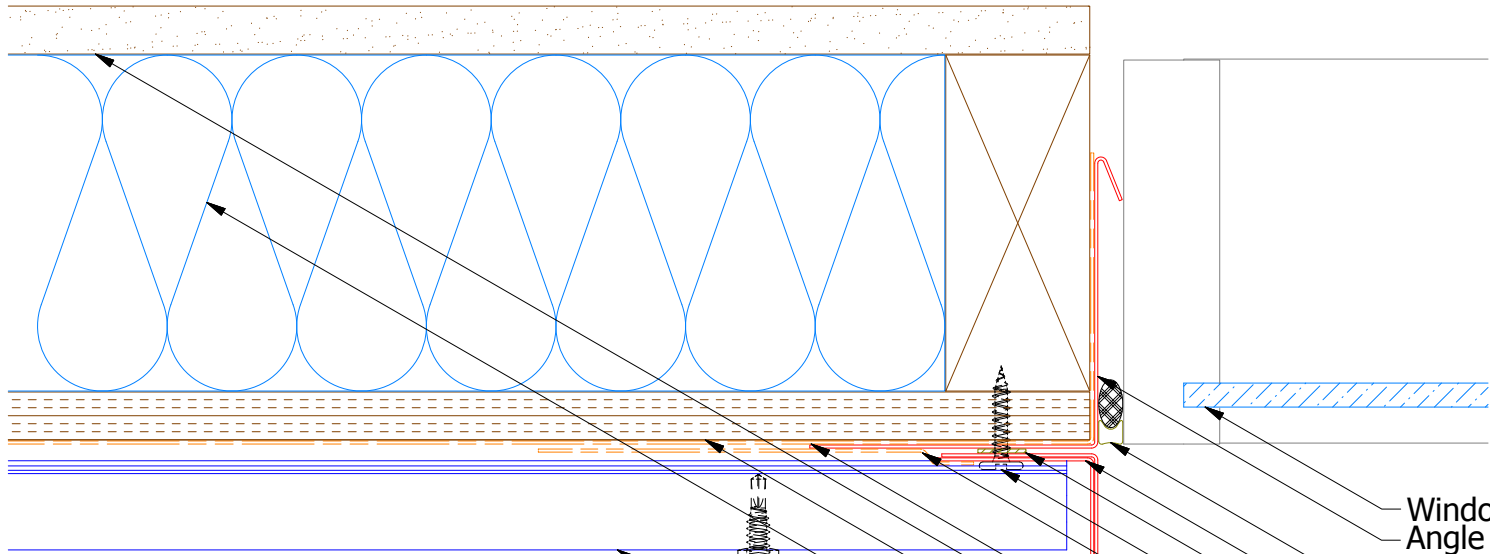
BCA550 - Head Trim



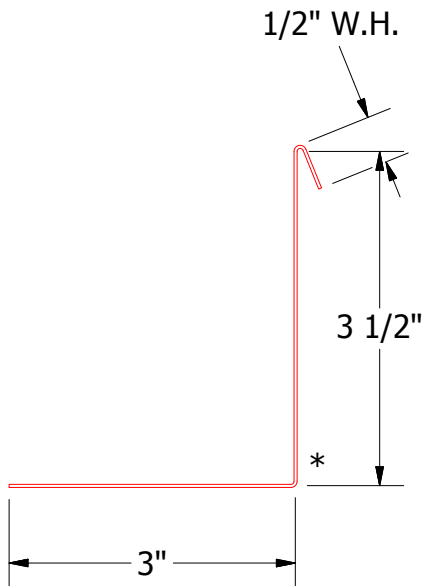
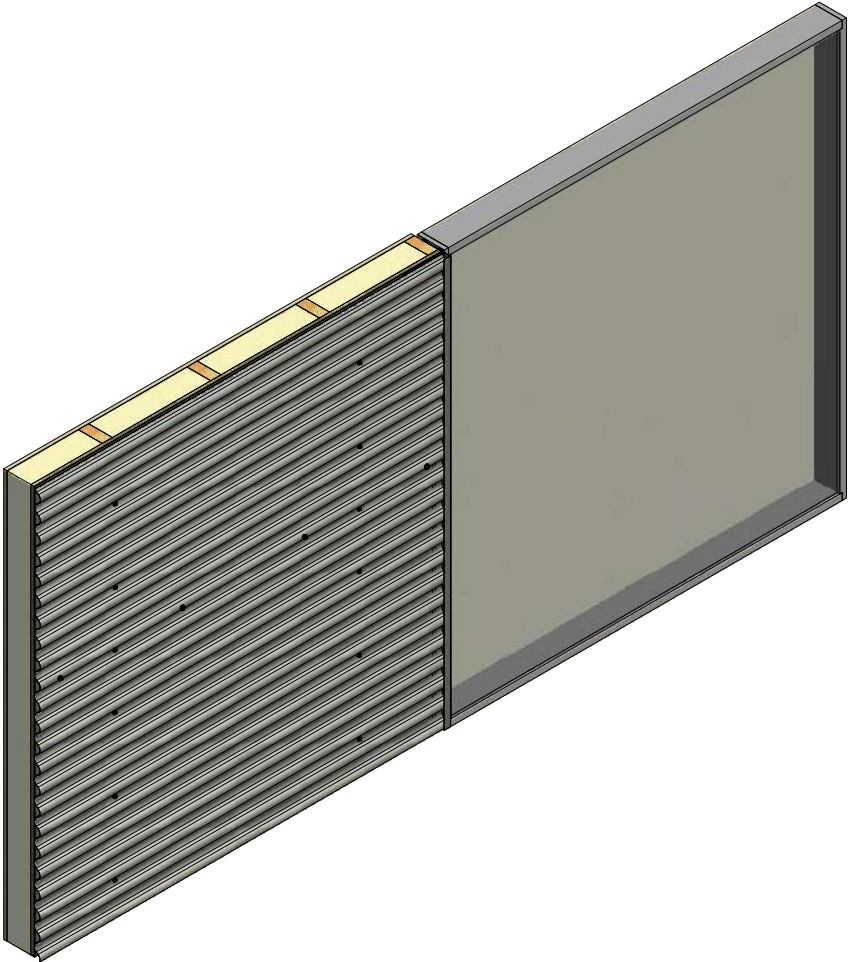
BCA690 - Head Angle Trim

 ATAS INTERNATIONAL, INC Allentown PA 610-395-8445 Mesa AZ 480-558-7210			
TITLE Belvedere Corrugated Head Detail			
DWG. NO.		DR KRK	DATE 5/8/2015
MATERIAL		APP DAS	DATE 7/29/16
REV. NO.	DATE	DESCRIPTION OF REVISION	BY APP
			SH. SIZE B
			SCALE X:X

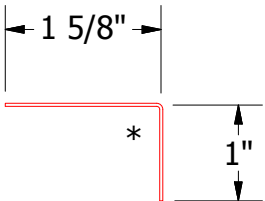
Horizontal Panel



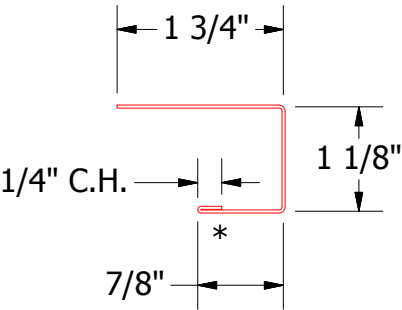
- Window Angle Trim with Return
- Backer Rod and Sealant
- Angle Trim
- Butyl Tape
- #10 x 1" Wafer Head Screw
- Membrane Strip over J Channel and Angle Trim
- J Channel
- Water and Air Resistive Barrier
- Interior Finish
- 1/2" Plywood (min.)
- Insulation
- #14 x 7/8" Painted Hex Washer Head Fastener with Washer (at Panel Lap)
- Corrugated Panel



BCA683 - Angle Trim With Return



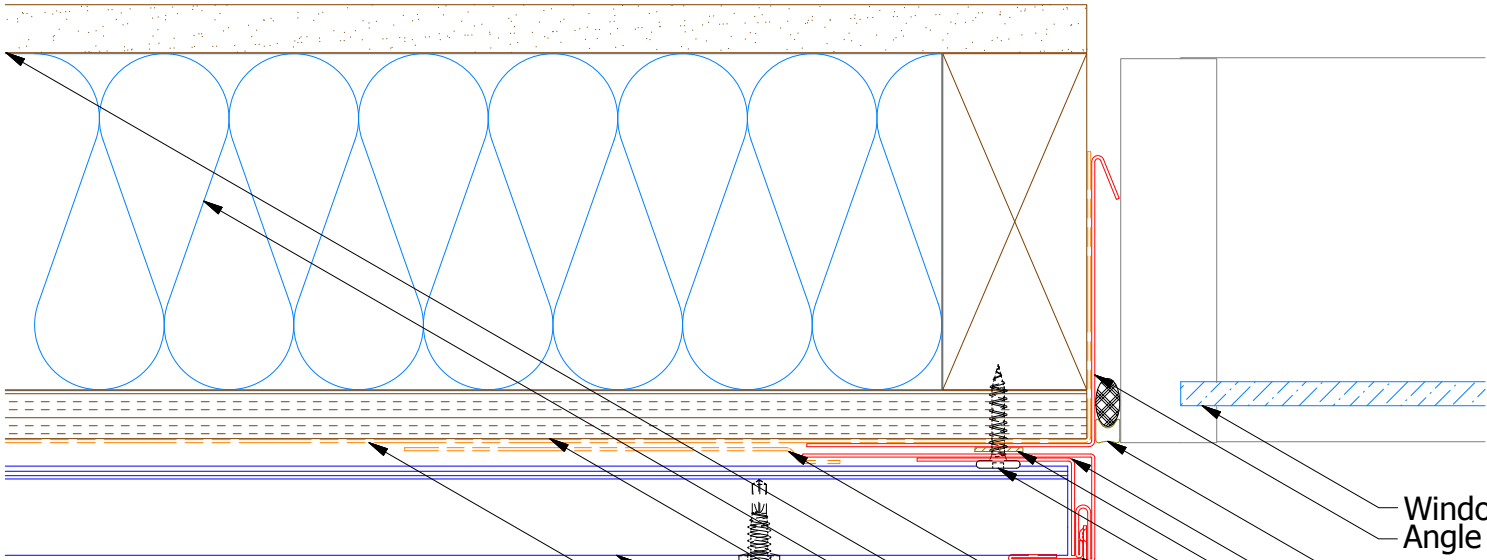
BCA680-Angle Trim



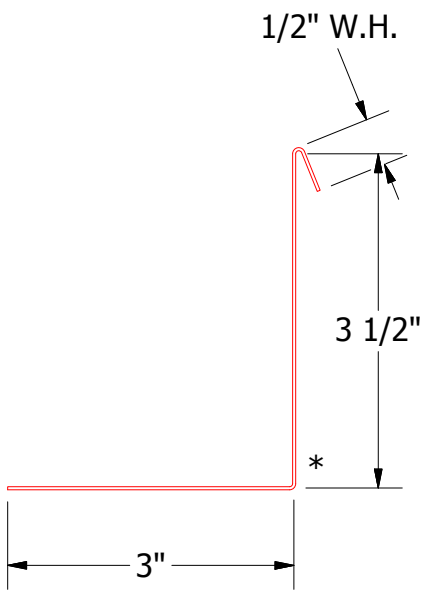
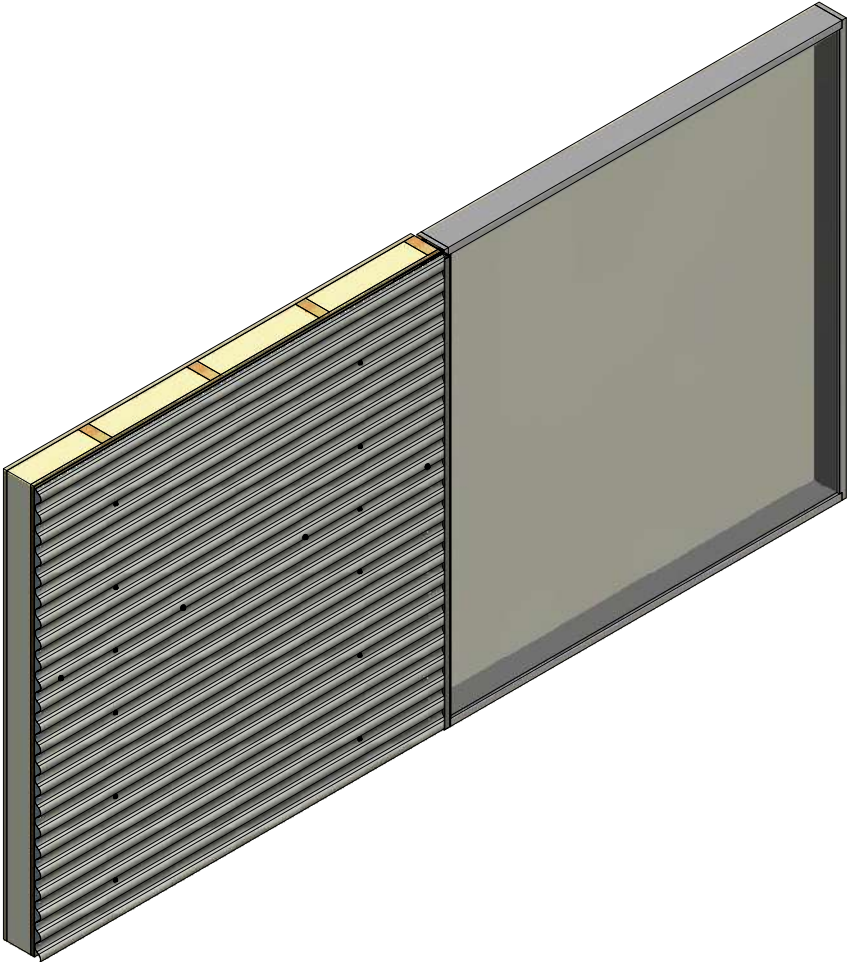
BCA118-J Channel

				Belvedere Corrugated Jamb Detail			
				DWG. NO.		DR KRK	DATE 5/8/2015
				MATERIAL		APP DAS	DATE 7/29/16
REV. NO.	DATE	DESCRIPTION OF REVISION	BY	APP	SH. SIZE B		SCALE X:X

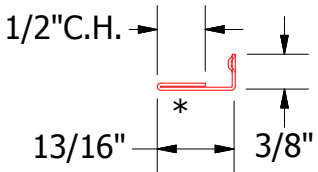
Horizontal Panel - Alternate



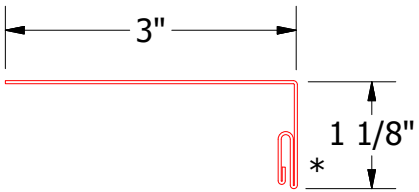
- Window Angle Trim with Return
- Backer Rod and Sealant
- Angle Trim
- Butyl Tape
- #10 x 1" Wafer Head Screw
- Snap J Channel
- Membrane Strip over Snap J Channel
- Interior Finish
- Insulation
- 1/2" Plywood (min.)
- #14 x 7/8" Painted Hex Washer Head Fastener with Washer (at Panel Lap)
- Corrugated Panel
- Water and Air Resistive Barrier



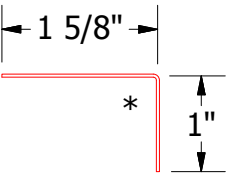
BCA683 - Angle Trim With Return



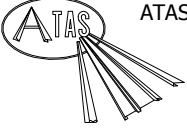
UNS078 - Snap J Cover



BCA119 - Snap J Base



BCA680 - Angle Trim

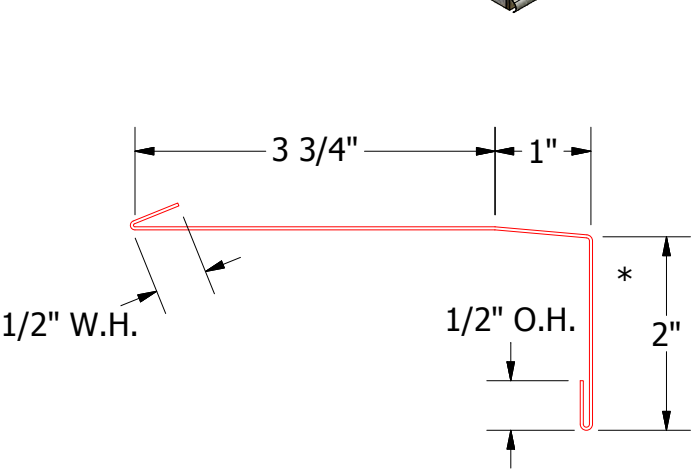
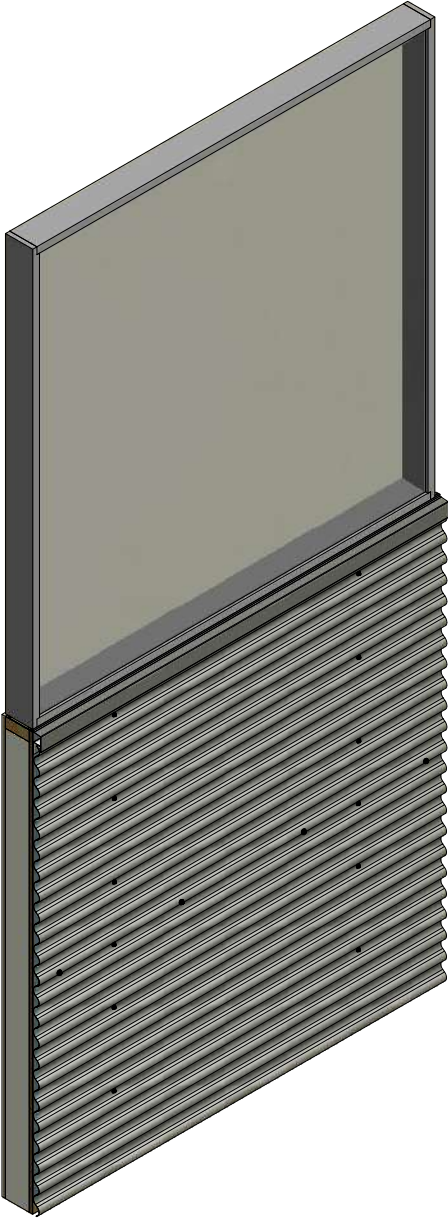
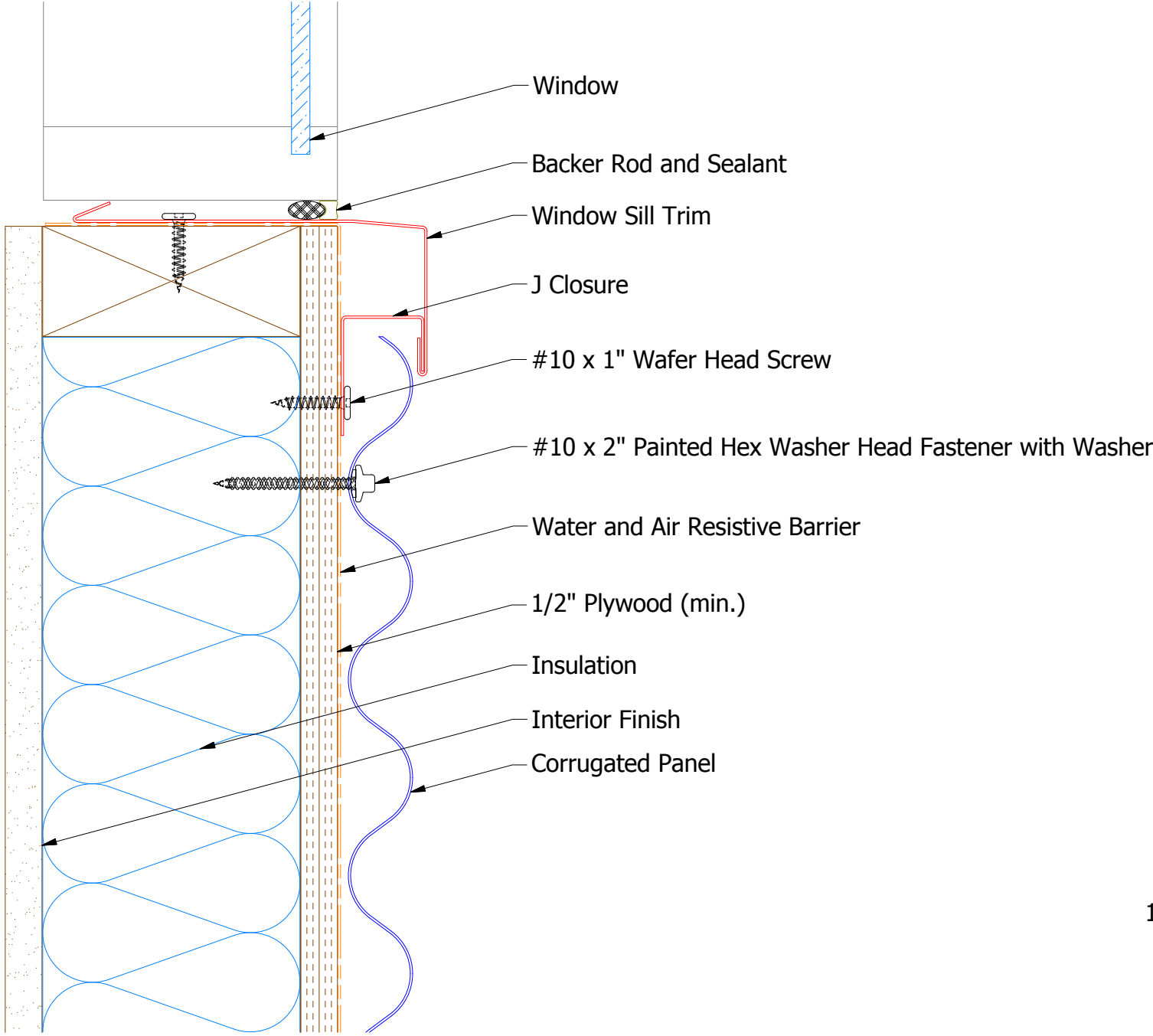


ATAS INTERNATIONAL, INC  
Allentown PA  
610-395-8445  
Mesa AZ  
480-558-7210

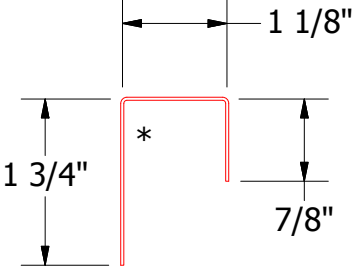
TITLE Belvedere Corrugated Jamb Alt Detail			
DWG. NO.		DR KRK	DATE 5/8/2015
MATERIAL		APP DAS	DATE 7/29/16
SH. SIZE B		SCALE X:X	

REV. NO.	DATE	DESCRIPTION OF REVISION	BY	APP

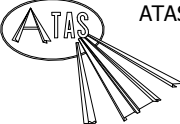
# Horizontal Panel



BCA670 - Window Sill Trim



BCA270 - J Closure



ATAS INTERNATIONAL, INC  
Allentown PA  
610-395-8445  
Mesa AZ  
480-558-7210

TITLE Belvedere Corrugated Window Sill Detail			
DWG. NO.		DR KRK	DATE 5/11/2015
MATERIAL		APP DAS	DATE 7/29/16
REV. NO.	DATE	DESCRIPTION OF REVISION	BY APP
SH. SIZE B		SCALE X:X	

REV. NO.	DATE	DESCRIPTION OF REVISION	BY	APP