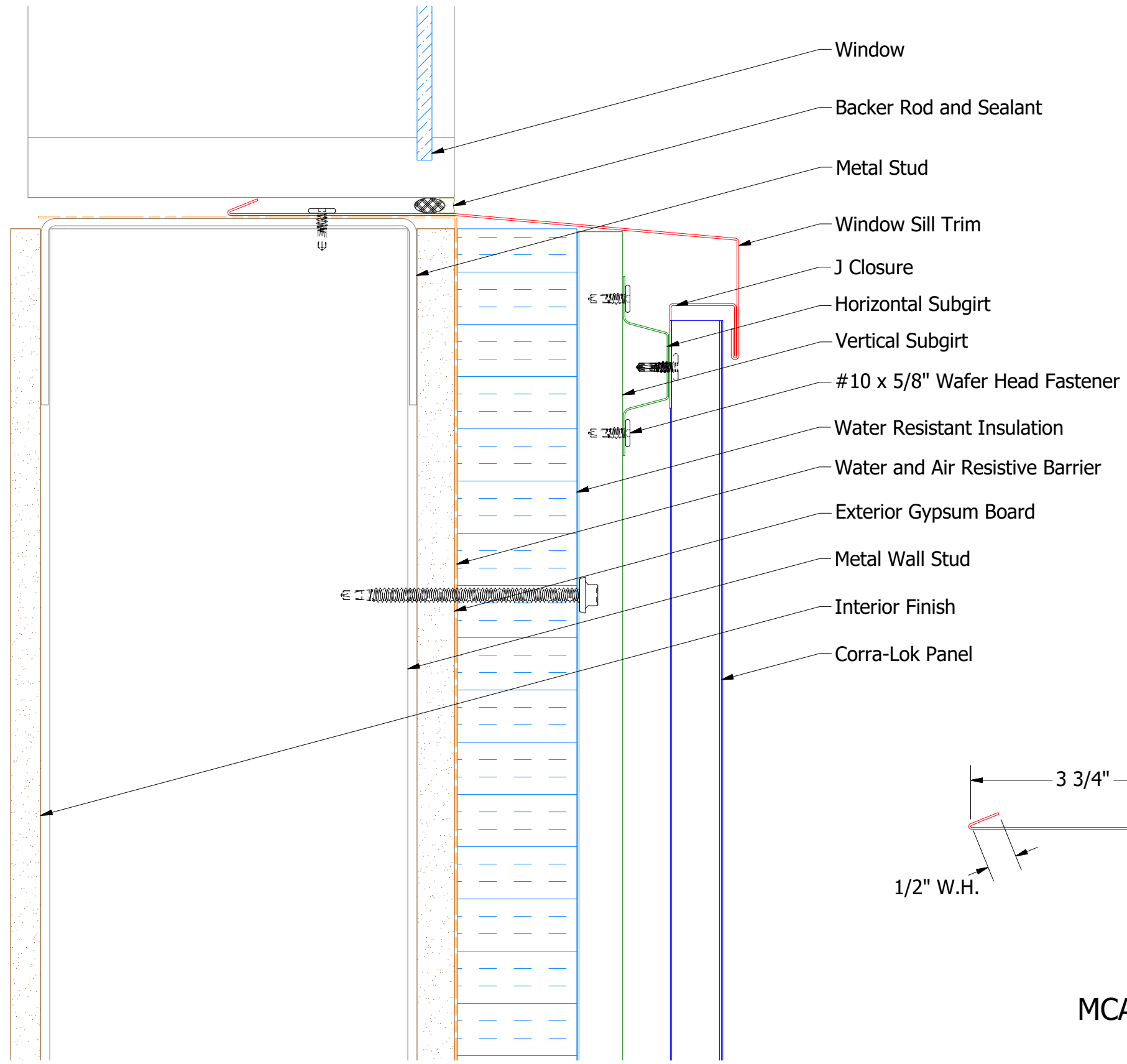
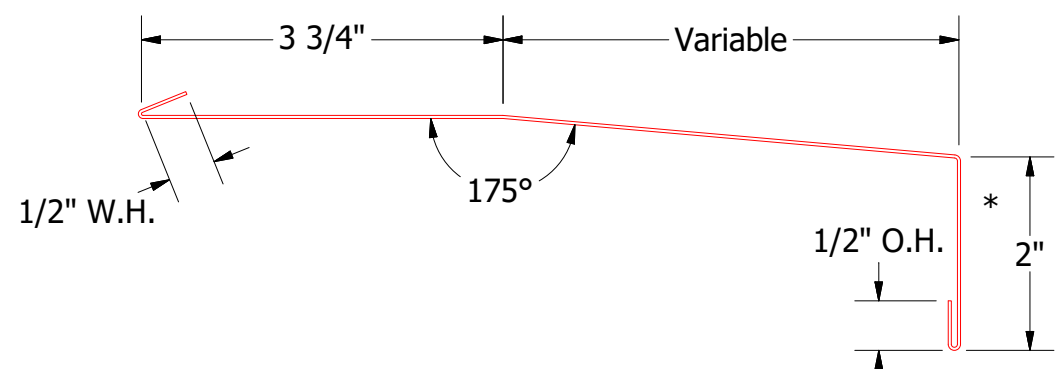
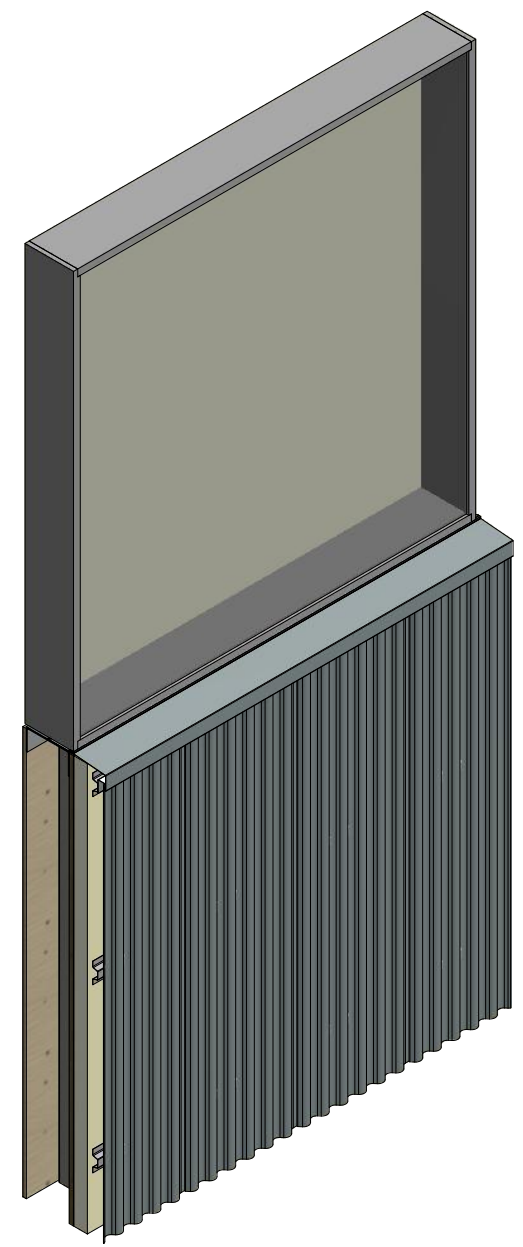


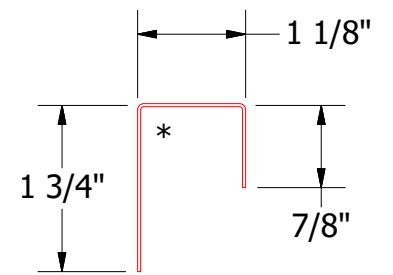
Vertical Panel



- Window
- Backer Rod and Sealant
- Metal Stud
- Window Sill Trim
- J Closure
- Horizontal Subgirt
- Vertical Subgirt
- #10 x 5/8" Wafer Head Fastener
- Water Resistant Insulation
- Water and Air Resistive Barrier
- Exterior Gypsum Board
- Metal Wall Stud
- Interior Finish
- Corra-Lok Panel



MCA670-Window Sill Trim



MCA270-J Closure

Note: *denotes color side.

ATAS ATAS INTERNATIONAL, INC
 Allentown PA
 610-395-8445
 Mesa AZ
 480-558-7210

TITLE				CORR-LOK OPEN WINDOW SILL DETAIL	
DWG. NO.		DR	DMR	DATE	2/17/2017
REV. NO.	DATE	DESCRIPTION OF REVISION	BY	APP	SCALE
1	2/28/20	Replaced Support Z with Corra-Lok Profiled Support Z	DMR		X:X