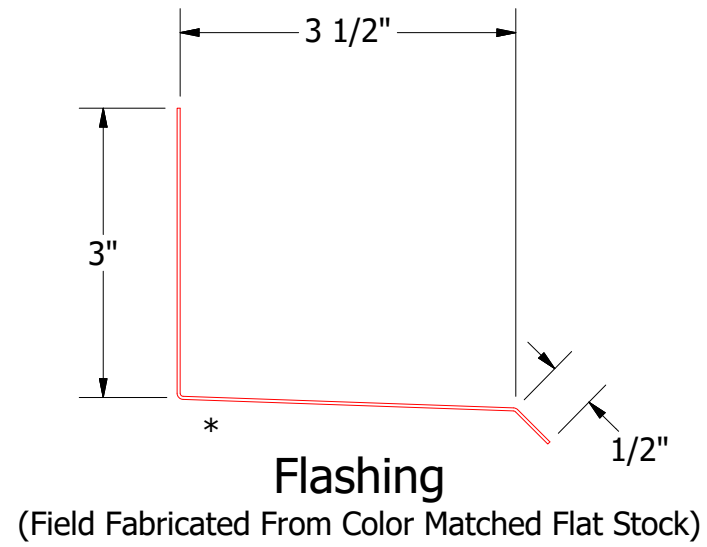
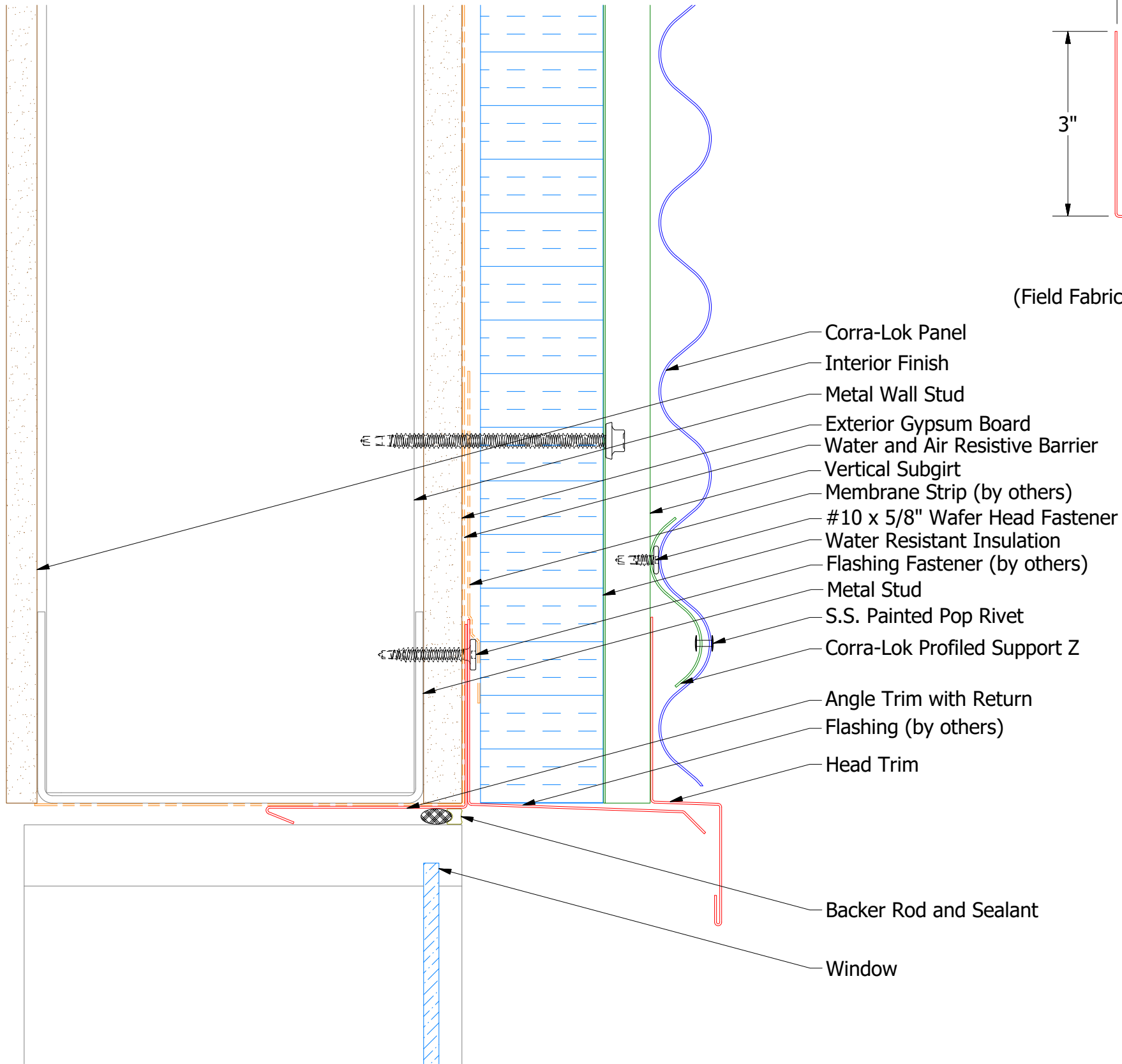
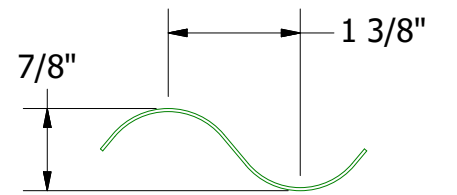
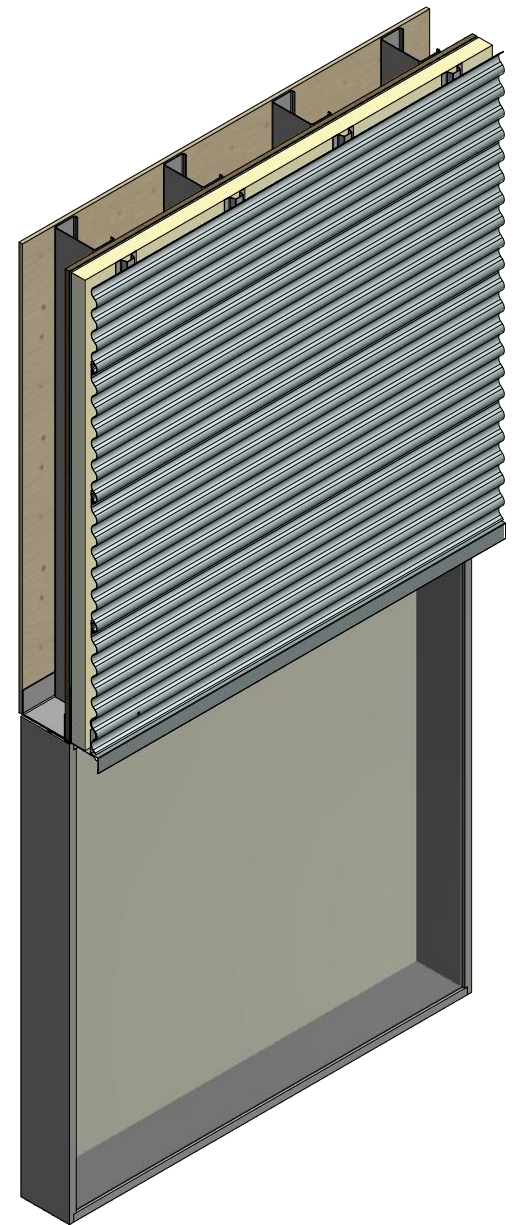
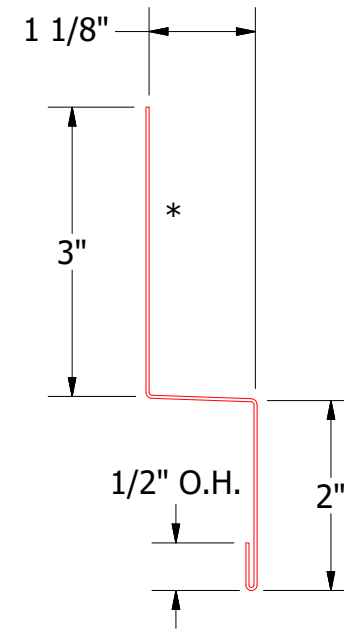


Horizontal Panel



- Corra-Lok Panel
- Interior Finish
- Metal Wall Stud
- Exterior Gypsum Board
- Water and Air Resistive Barrier
- Vertical Subgirt
- Membrane Strip (by others)
- #10 x 5/8" Wafer Head Fastener
- Water Resistant Insulation
- Flashing Fastener (by others)
- Metal Stud
- S.S. Painted Pop Rivet
- Corra-Lok Profiled Support Z
- Angle Trim with Return
- Flashing (by others)
- Head Trim
- Backer Rod and Sealant
- Window



MCA682 Corra-Lok Profiled Support Z

ATAS ATAS INTERNATIONAL, INC
Allentown PA
610-395-8445
Mesa AZ
480-558-7210

TITLE **Corra-Lok Open Head Detail**

1	2/27/20	Replaced Support Z with Corra-Lok Profiled Support Z	DMR	APP	DR	DMR	DATE	2/10/2017	
REV. NO.	DATE	DESCRIPTION OF REVISION	BY	APP	MATERIAL	SH. SIZE	B	SCALE	X:X

Note: * denotes color side.