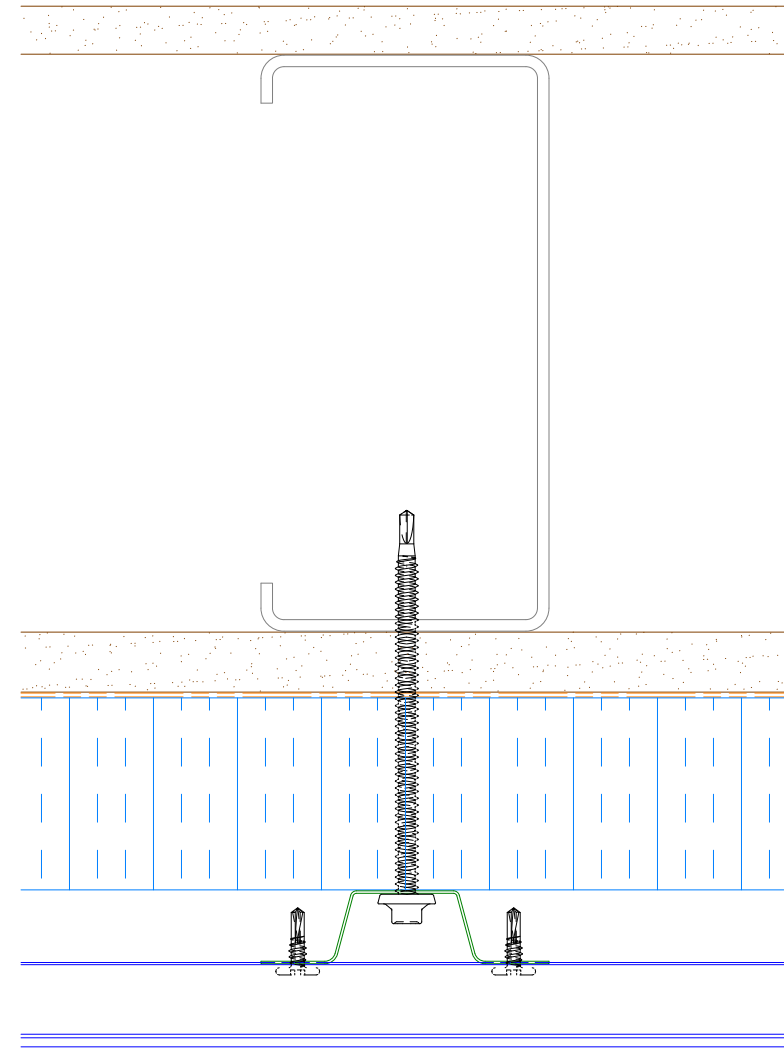
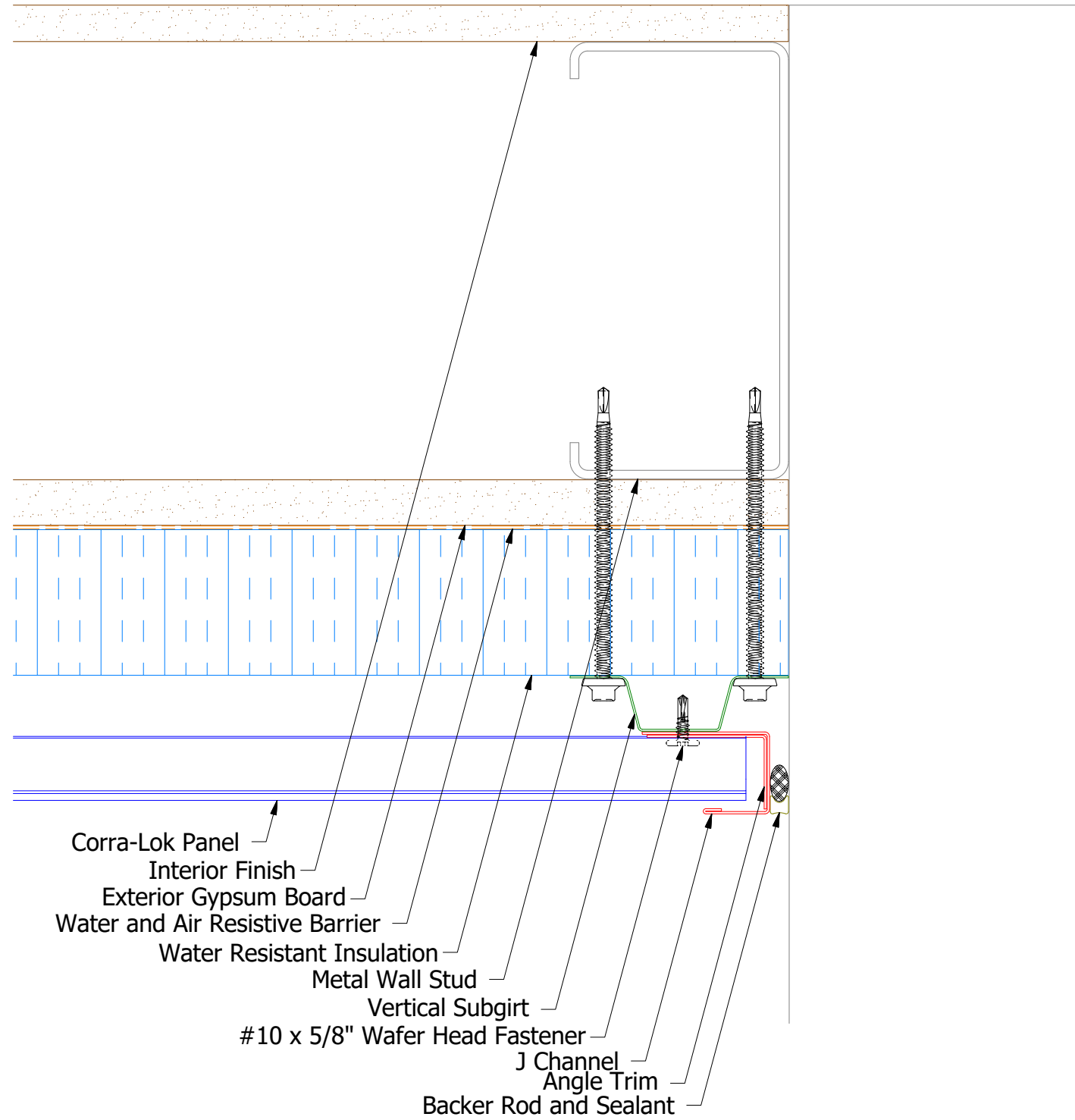
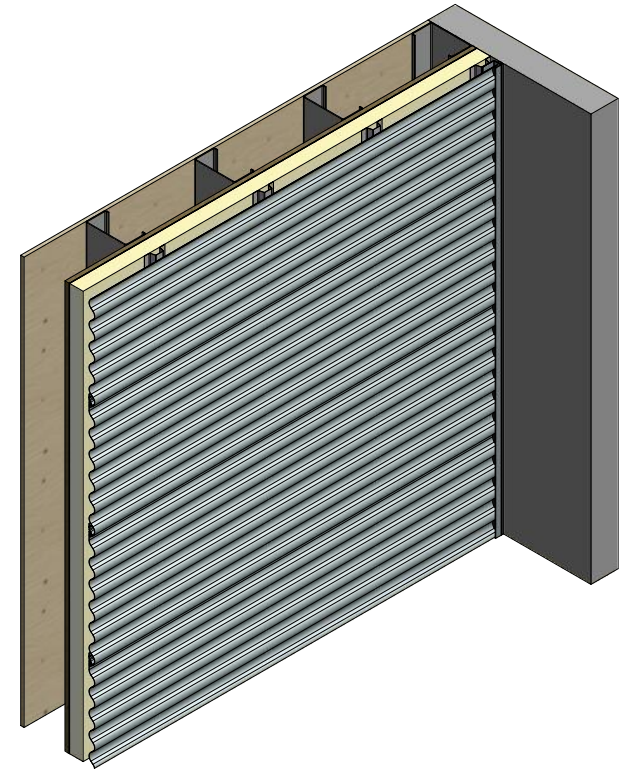


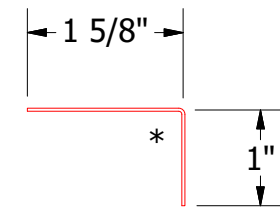
# Horizontal Panel



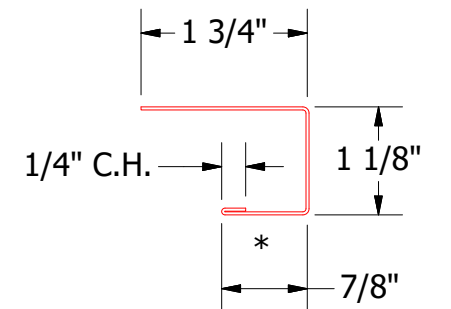
Alternate Subgirt Orientation



- Corra-Lok Panel
- Interior Finish
- Exterior Gypsum Board
- Water and Air Resistive Barrier
- Water Resistant Insulation
- Metal Wall Stud
- Vertical Subgirt
- #10 x 5/8" Wafer Head Fastener
- J Channel
- Angle Trim
- Backer Rod and Sealant



MCA680-Angle Trim



MCA118-J Channel

Note: \* denotes color side.

REV. NO.	DATE	DESCRIPTION OF REVISION	BY	APP	TITLE	DR	DATE
1	2/27/20	Replaced Support Z with Corra-Lok Support Z	DMR		Corra-Lok Open Endwall Detail	DMR	2/10/2017
						APP	DATE
					MATERIAL	SH. SIZE	SCALE
						B	X:X


**ATAS INTERNATIONAL, INC**  
 Allentown PA  
 610-395-8445  
 Mesa AZ  
 480-558-7210