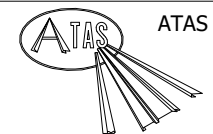
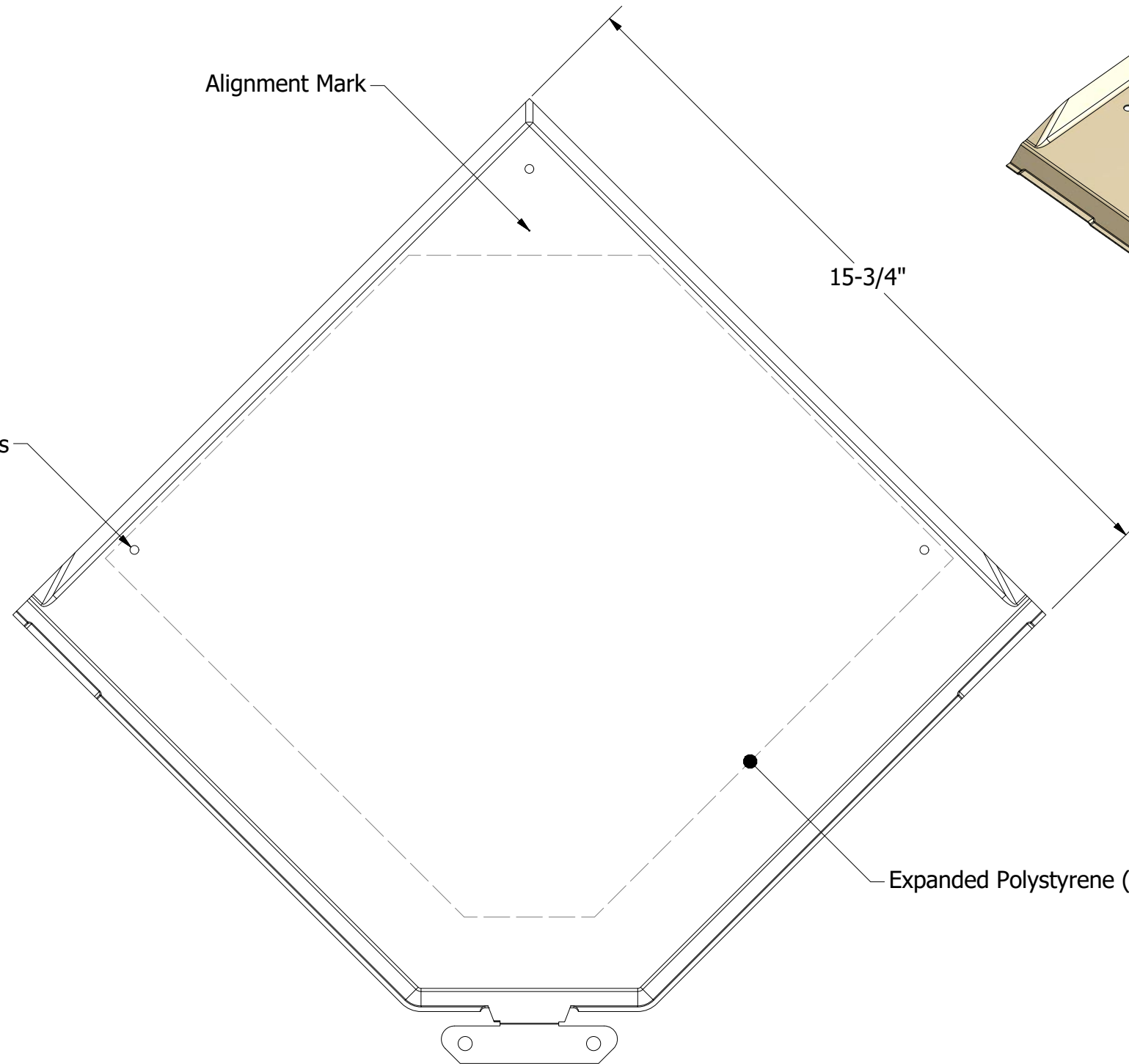
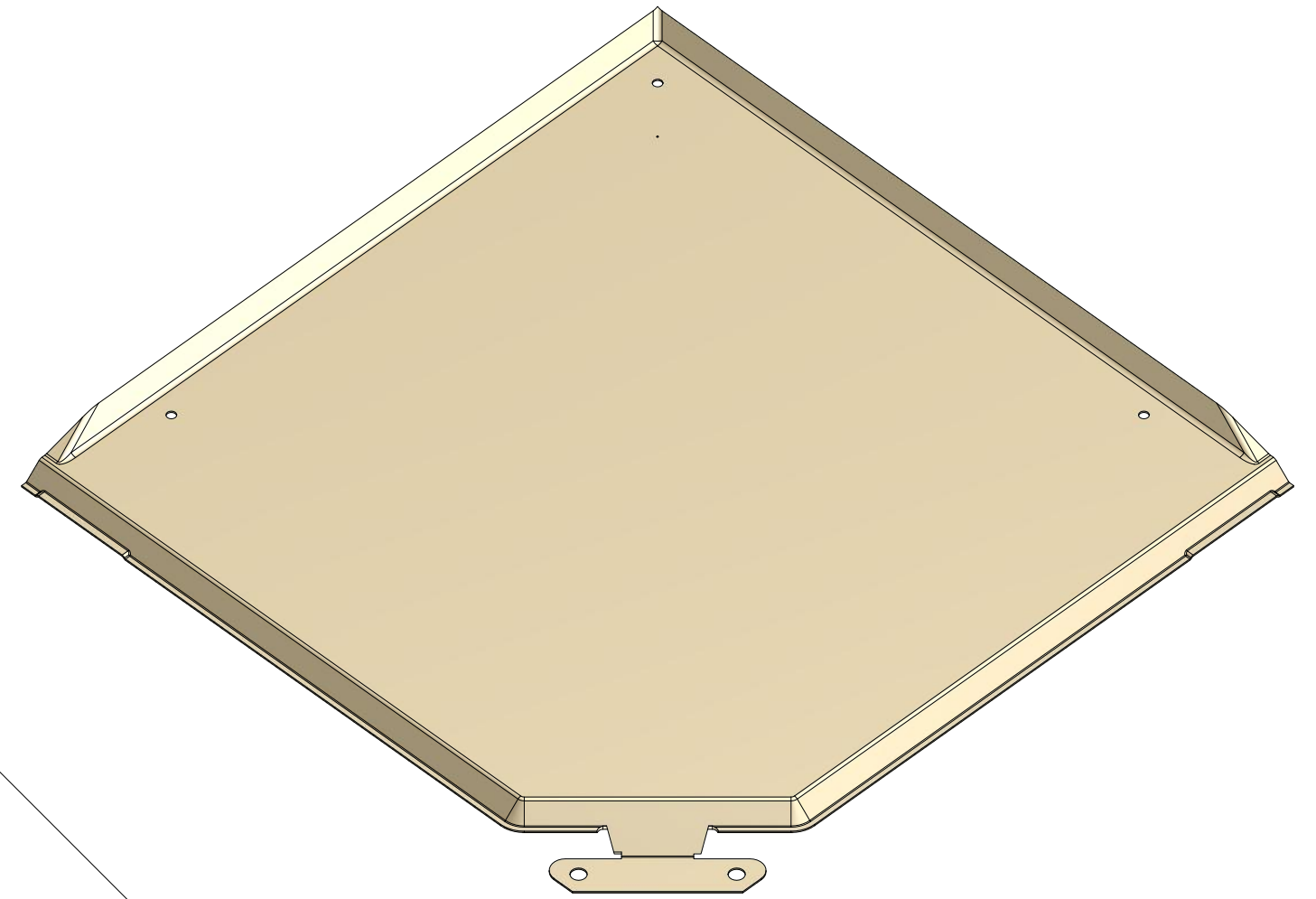


Pre Punched Holes

Alignment Mark

15-3/4"

Expanded Polystyrene (EPS)



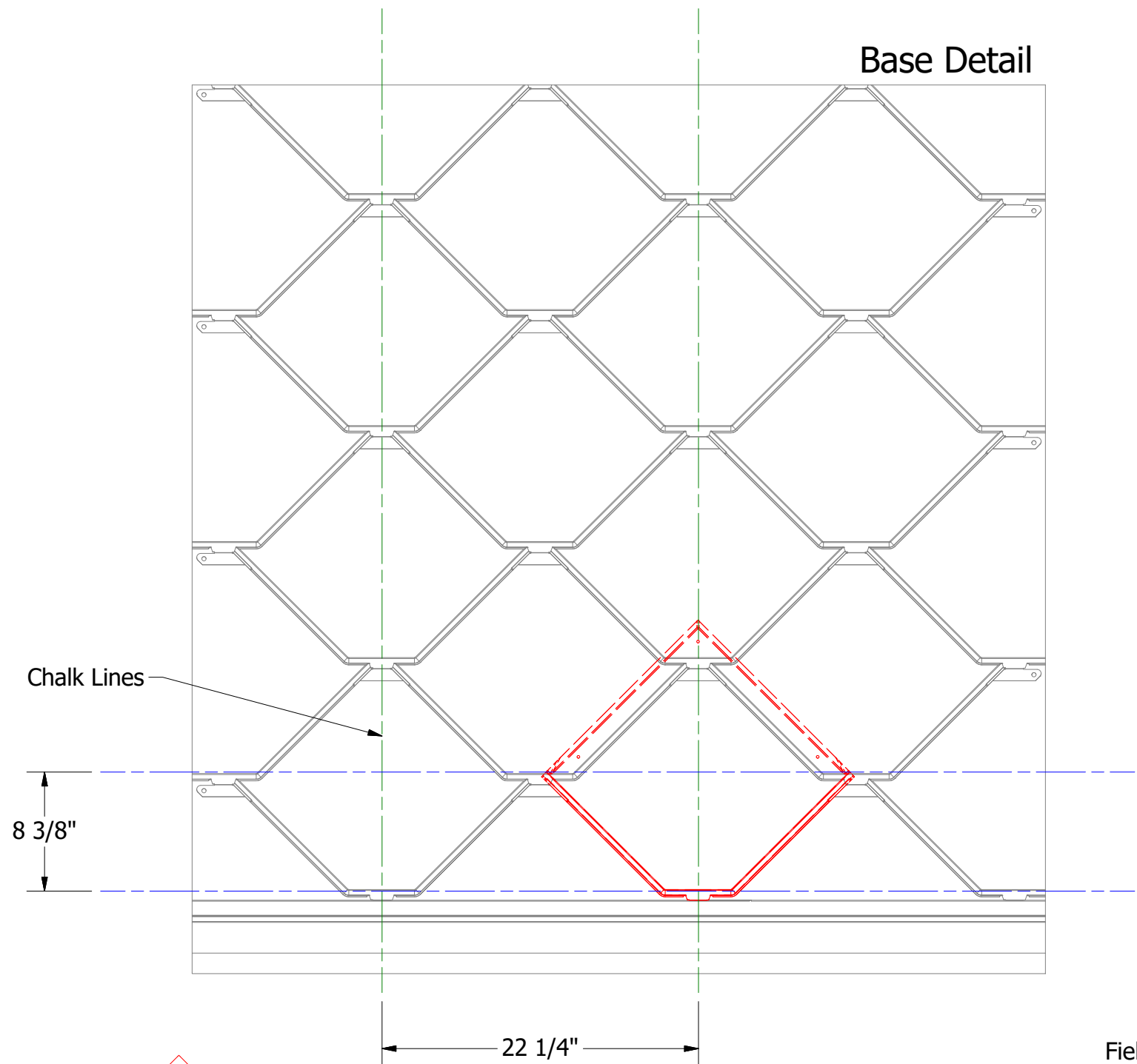
ATAS INTERNATIONAL, INC
 Allentown PA
 610-395-8445
 Mesa AZ
 480-558-7210

TITLE CastleTop Panel Profile Detail

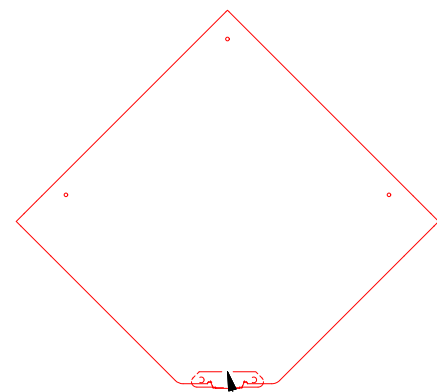
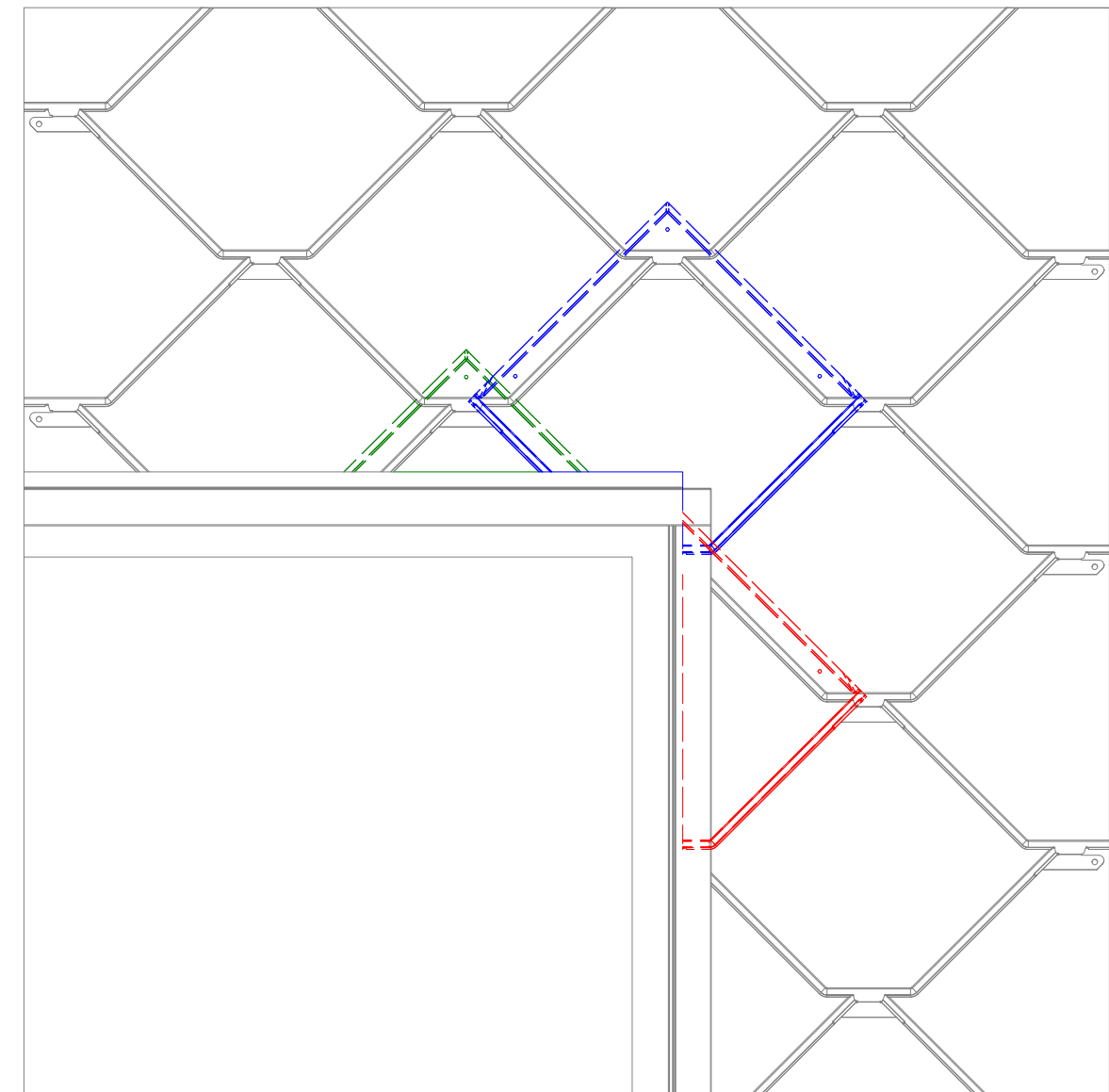
REV. NO.	DATE	DESCRIPTION OF REVISION	BY	APP
01	6/1/2022	Updated 3D View Orientation	KRK	

DWG. NO.	DR	DATE
	KRK	7/9/2014
MATERIAL	APP	DATE
	DAS	8/5/16
	SH. SIZE	SCALE
	B	X:X

Base Detail

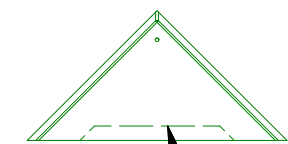
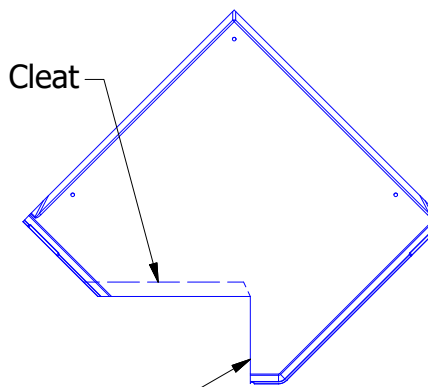
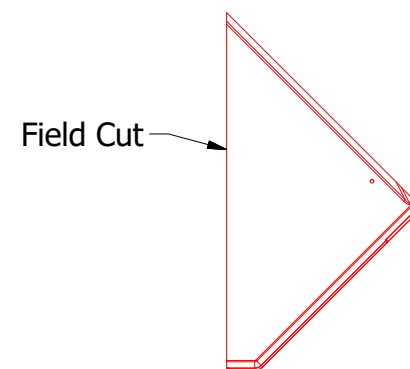


Window Head to Window Jamb Detail

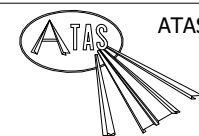


Fold Panel Tab to engage Jogle Cleat

Field Cut and Hem around Joggle Cleat



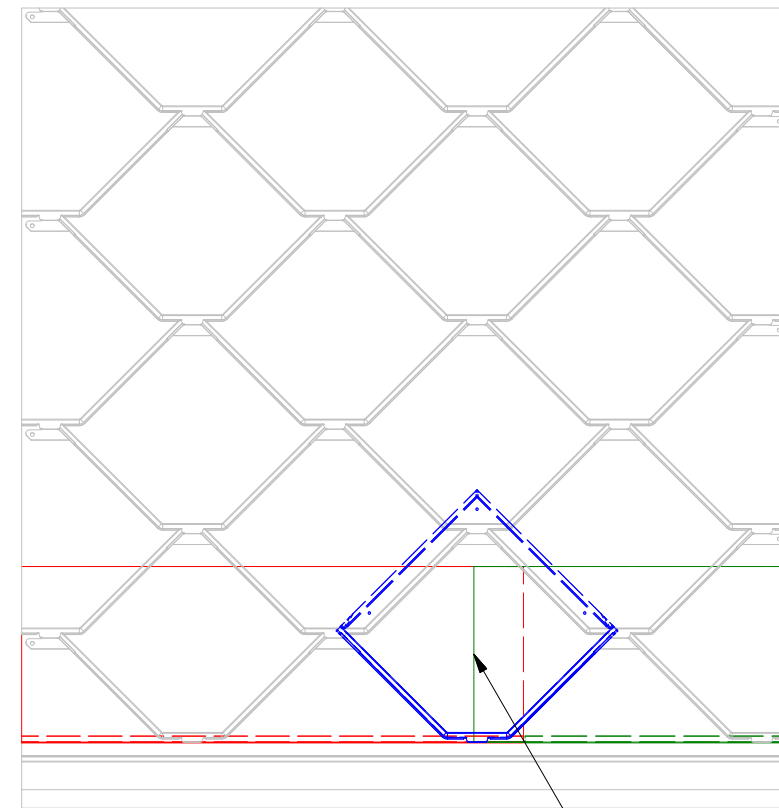
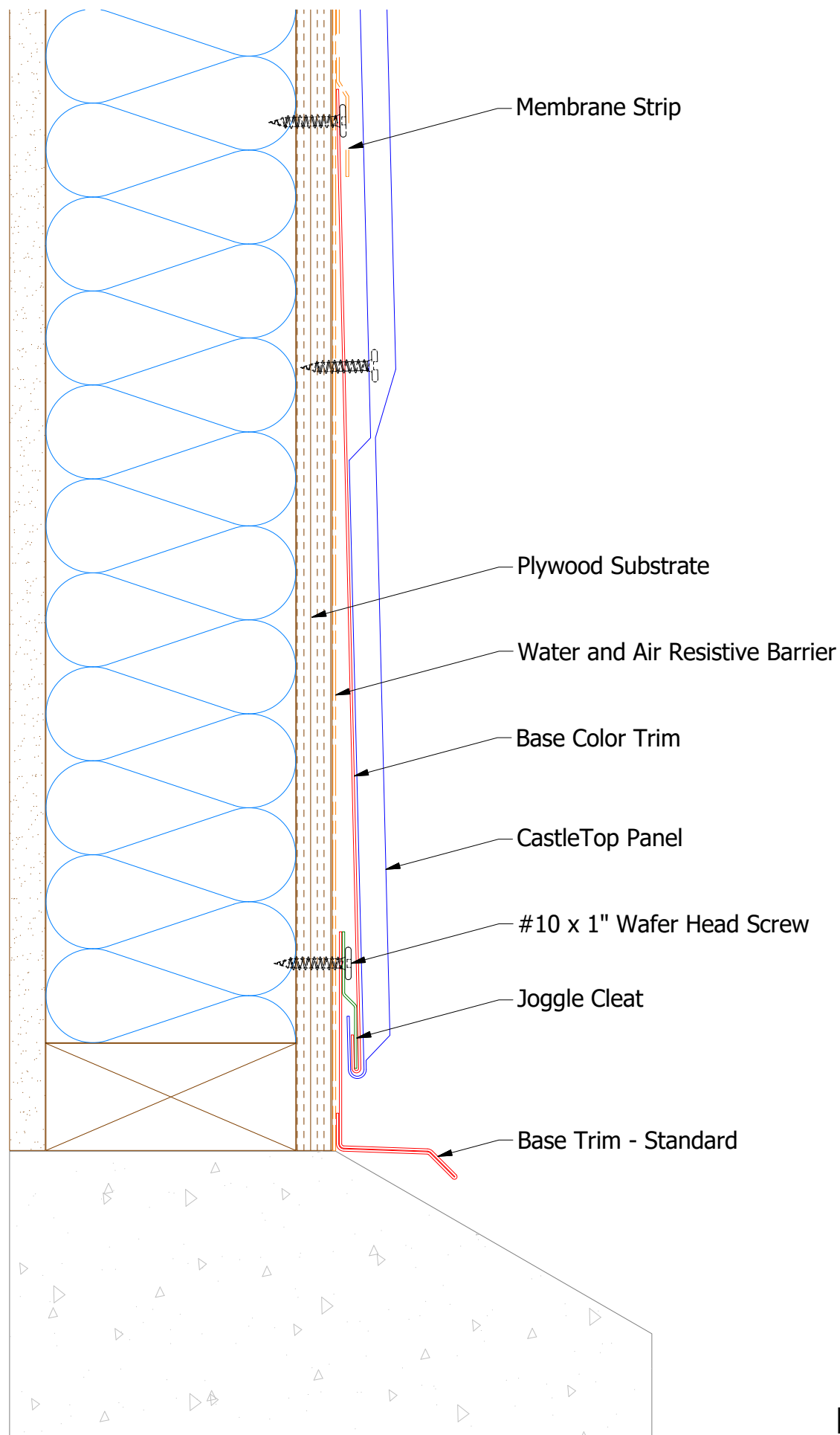
Field Cut and Hem around Joggle Cleat



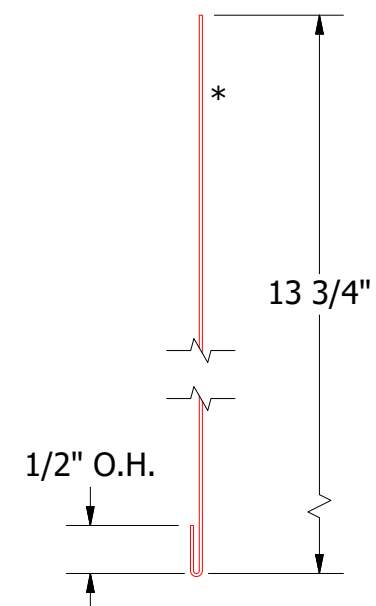
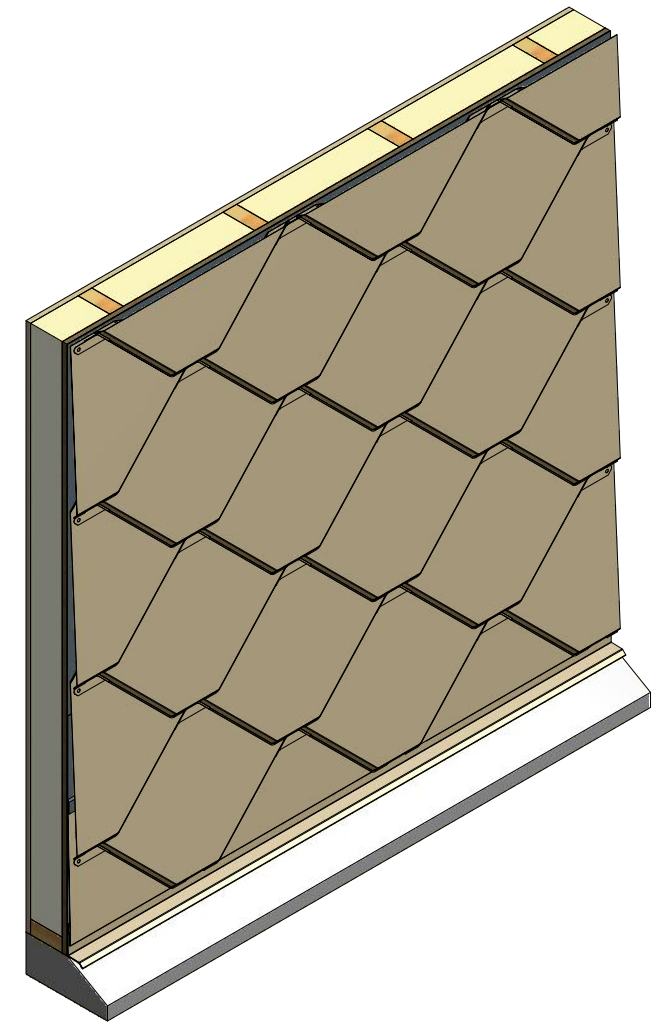
ATAS INTERNATIONAL, INC
 Allentown PA
 610-395-8445
 Mesa AZ
 480-558-7210

TITLE
CastleTop Wall Panel Layout Detail

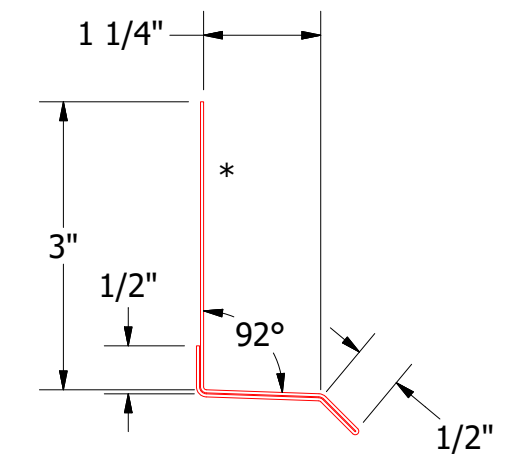
REV. NO.	DATE	DESCRIPTION OF REVISION	BY	APP	DWG. NO.	DR	DATE
01	1/12/2023	Added Window Panel Layout.	KRK			DMR	1/20/2020
					MATERIAL	APP	DATE
						SH. SIZE	SCALE
						B	X:X



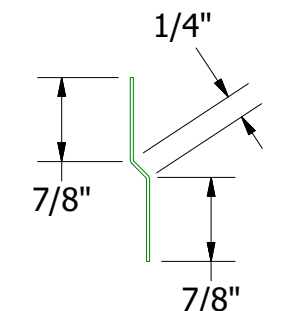
Base Color Trim overlap behind CastleTop Panel



HCA668 - Base Color Trim




HCA661 - Base Trim - Standard

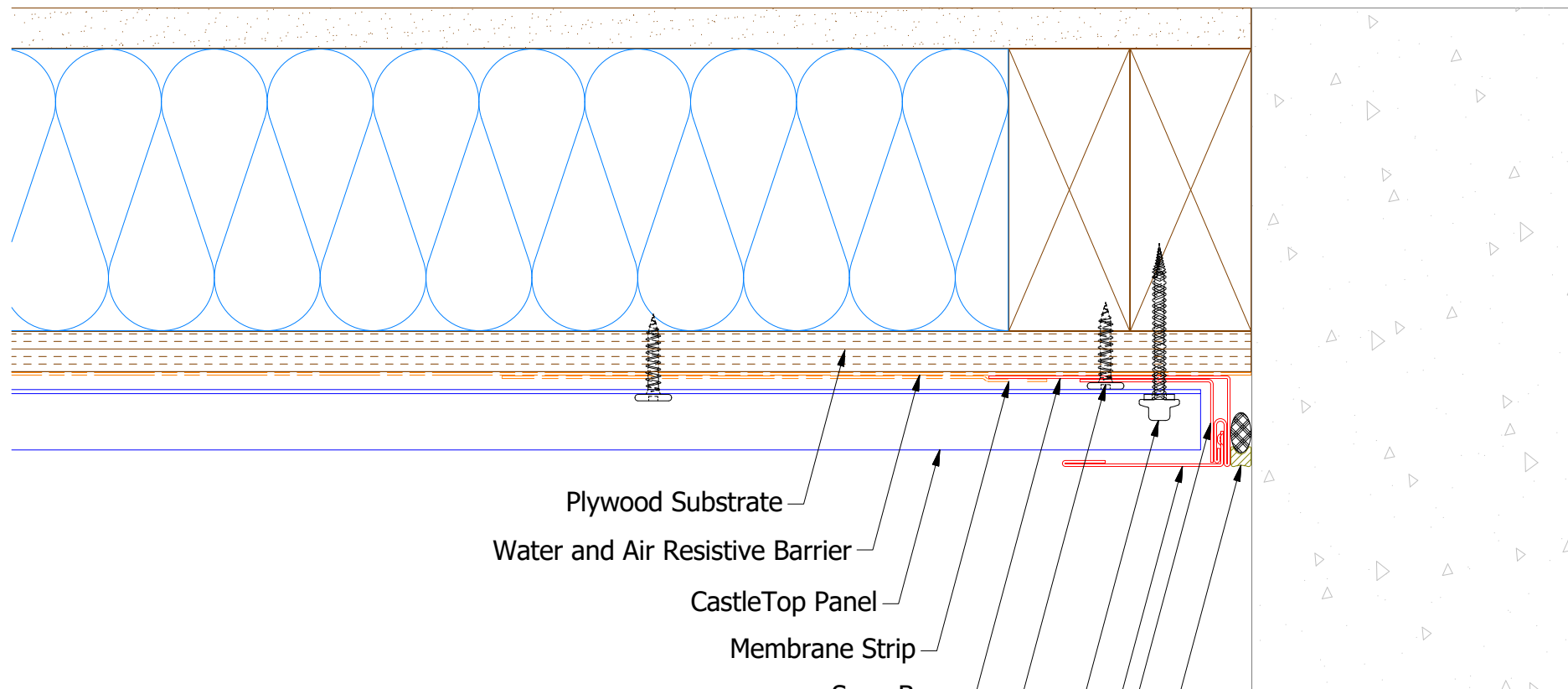


HCA975 - Joggle Cleat

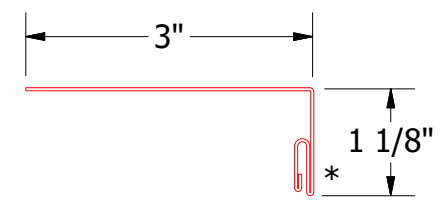
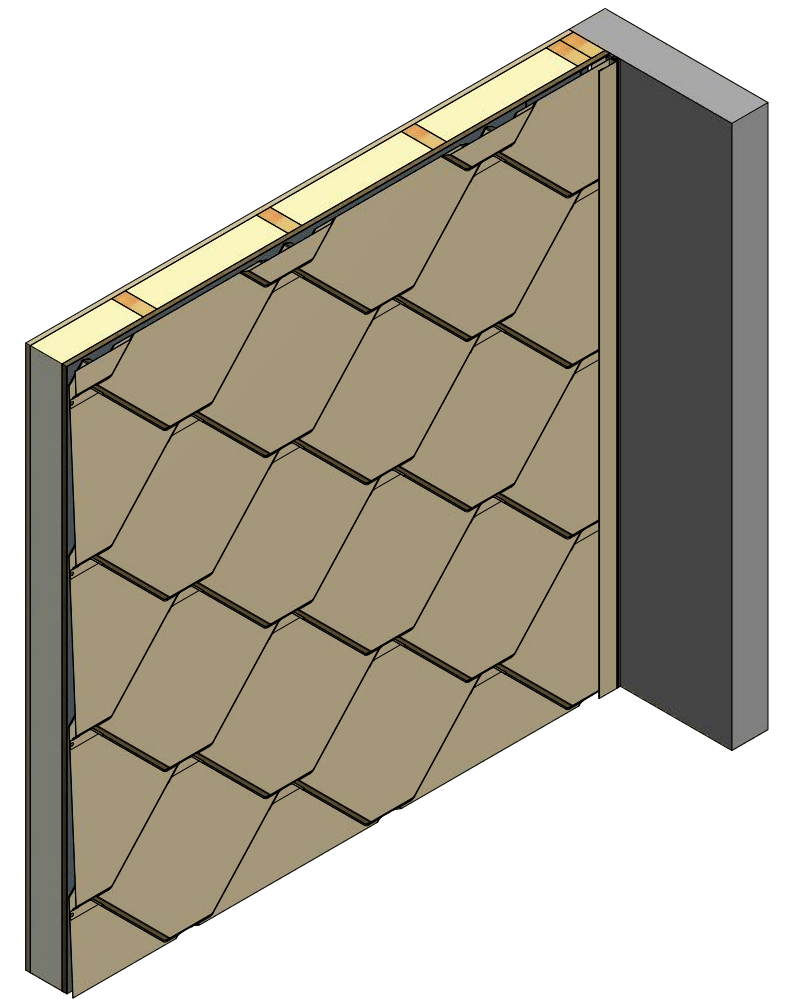
Note: * denotes color side.

REV. NO.	DATE	DESCRIPTION OF REVISION	BY	APP
03	1/6/2023	Added Base Color Trim Overlap Detail	KRK	
02	6/23/2020	Added Base Color Trim SKU and Note for Color Side	KRK	
01	5/16/2018	Added CastleTop Color Trim	KRK	

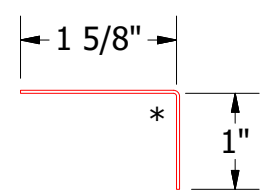
 ATAS INTERNATIONAL, INC Allentown PA 610-395-8445 Mesa AZ 480-558-7210			
TITLE		CastleTop Base Detail	
DWG. NO.	DR	DMR	DATE 8/4/2016
MATERIAL	APP	DAS	DATE 8/5/2016
	SH. SIZE	B	SCALE X:X



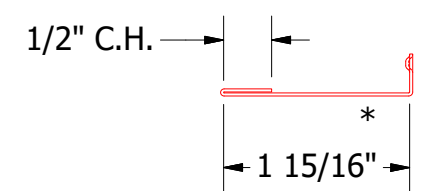
- Plywood Substrate
- Water and Air Resistive Barrier
- CastleTop Panel
- Membrane Strip
- Snap Base
- #10 x 1" Wafer Head Screw
- #10 x 2" HWH with Washer Screw (if appropriate)
- Snap J Cover
- Angle Trim (if appropriate)
- Backer Rod and Sealant




HCA119 - Snap Base



HCA680 - Angle Trim

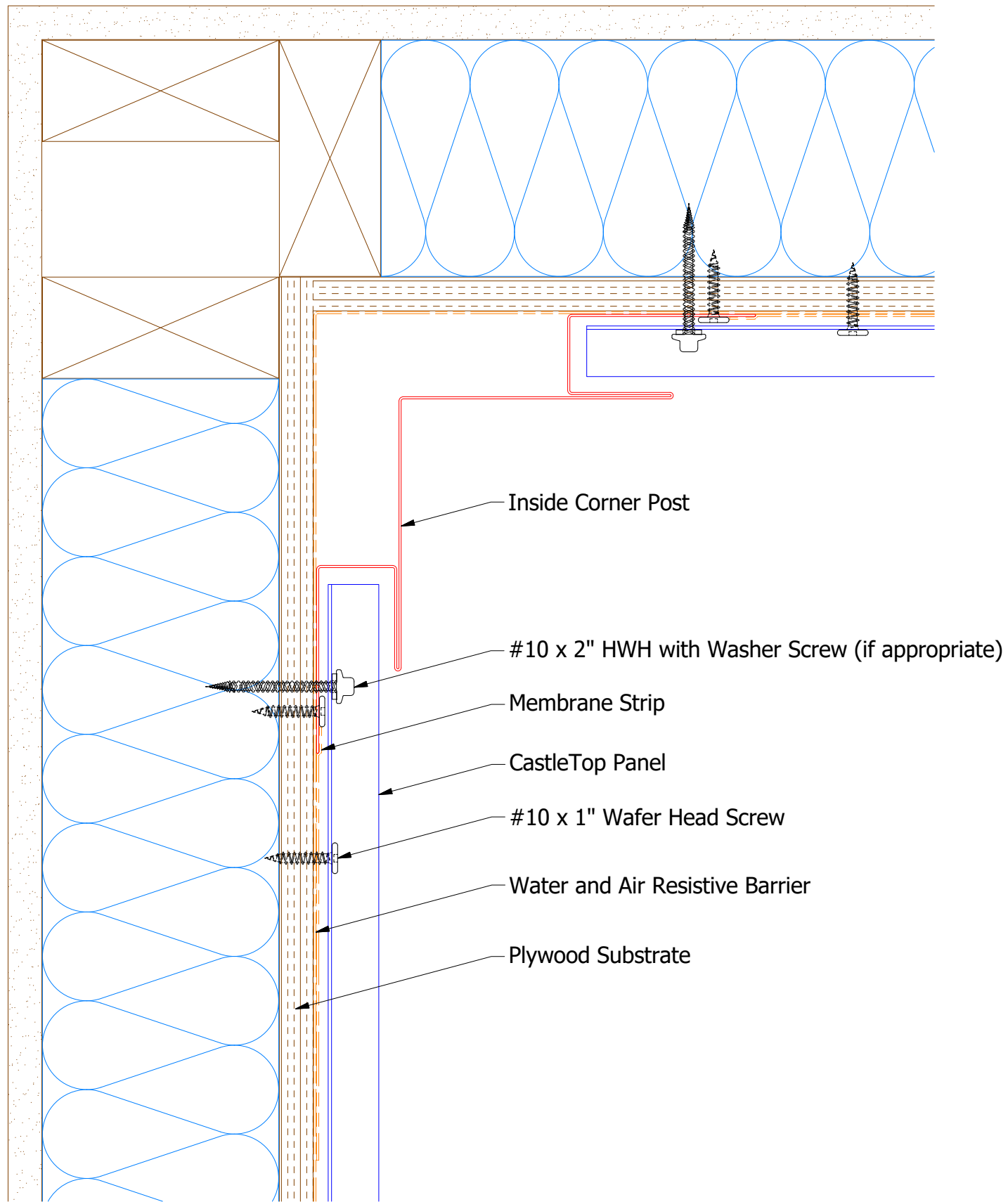


UNS200 - Snap J Cover

 ATAS INTERNATIONAL, INC Allentown PA 610-395-8445 Mesa AZ 480-558-7210	
CastleTop Endwall Detail	
DWG. NO.	DR DMR DATE 8/4/2016
MATERIAL	APP DATE
REV. NO.	SH. SIZE B SCALE X:X

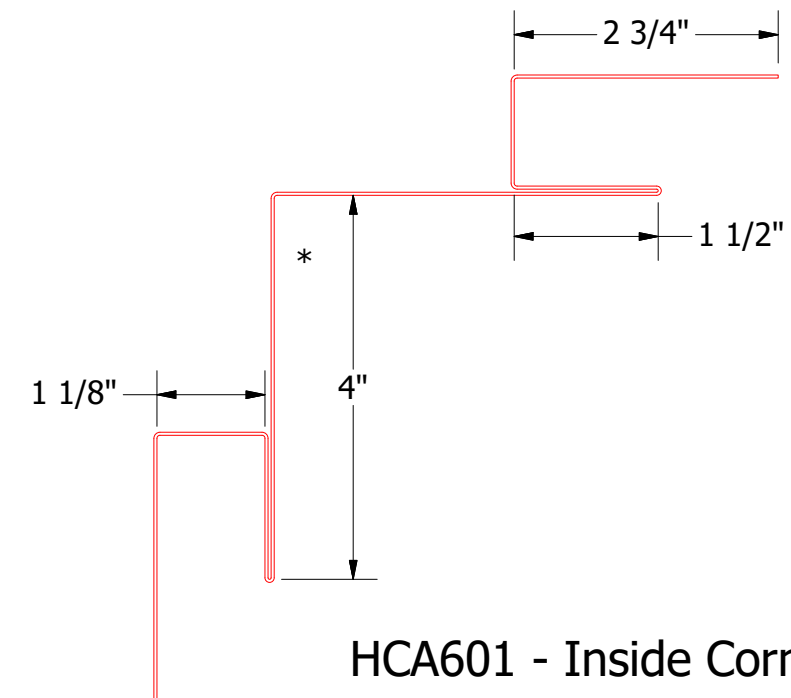
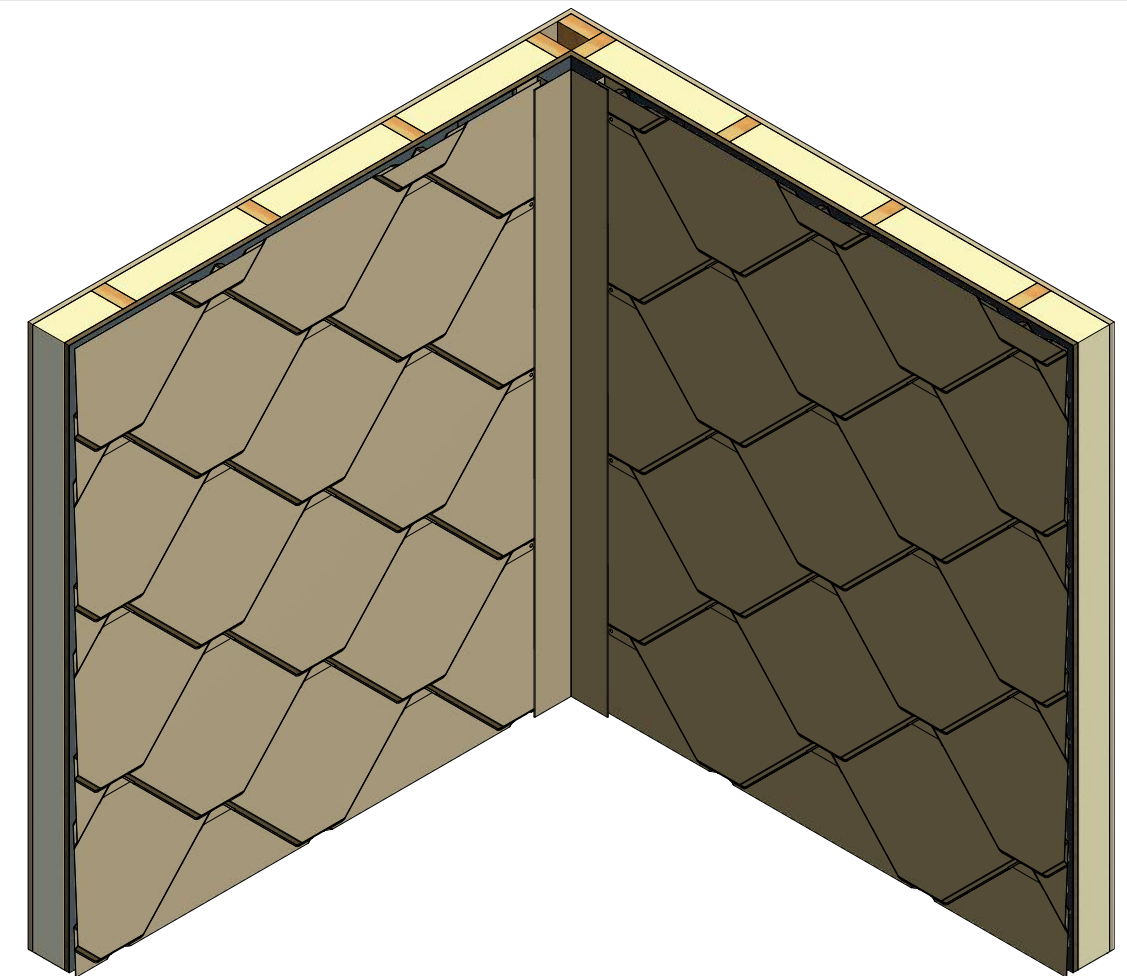
Note: * denotes color side.
 Note: If Hex Washer Head Screw is used, do not Overdrive the Fastener.

REV. NO.	DATE	DESCRIPTION OF REVISION	BY	APP
02	1/9/2023	Updated J Channel to Snap Base and Snap J Cover. Added Fastener and Angle Trim.	KRK	
01	6/23/2020	Added Color Side Note.	KRK	



Note: * denotes color side.

Note: If Hex Washer Head Screw is used, do not Overdrive the Fastener.

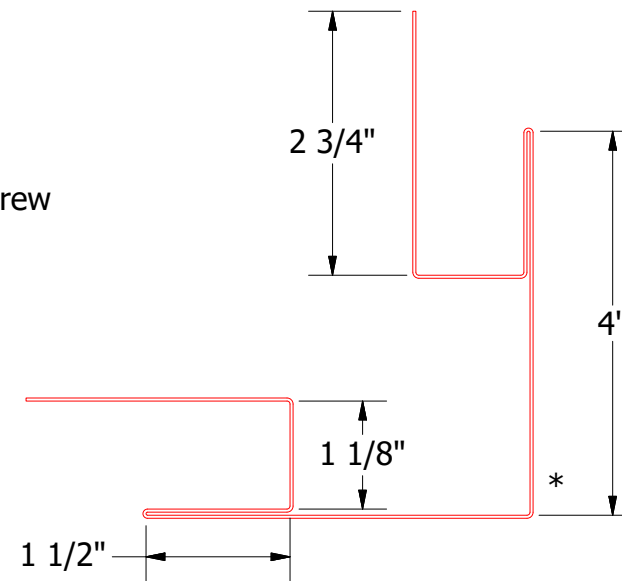
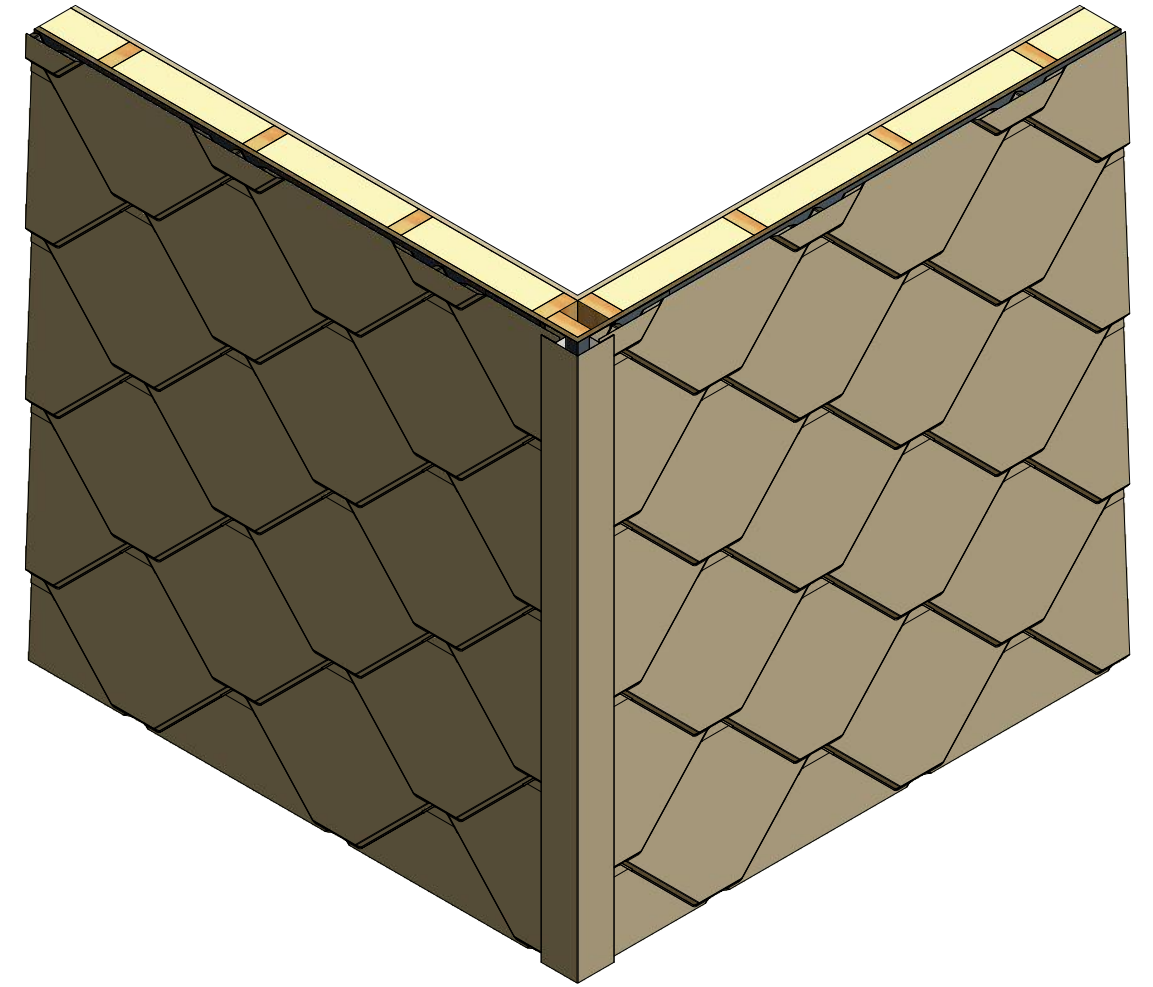
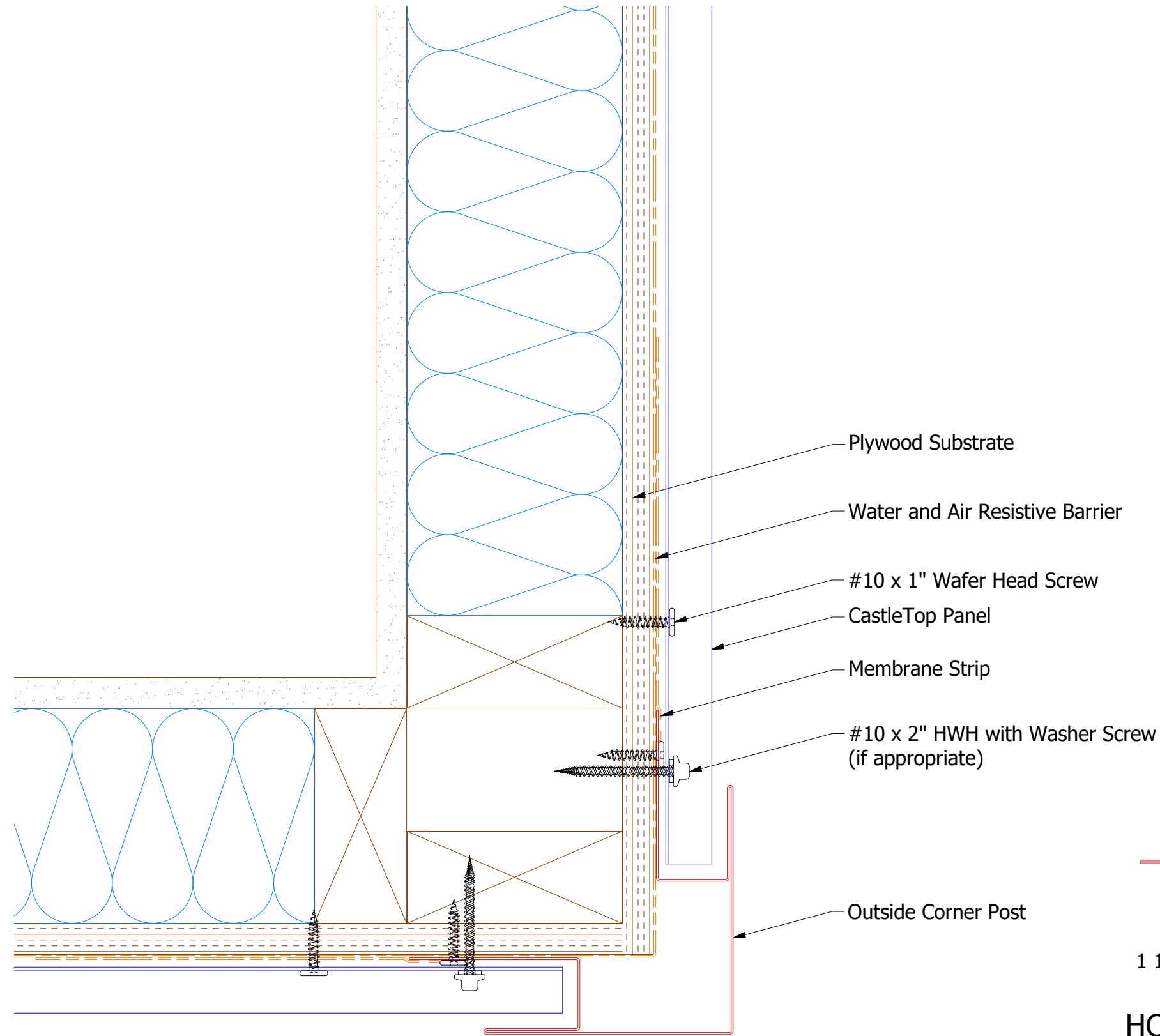


HCA601 - Inside Corner Post



ATAS INTERNATIONAL, INC
 Allentown PA
 610-395-8445
 Mesa AZ
 480-558-7210

REV. NO.	DATE	DESCRIPTION OF REVISION	BY	APP	TITLE	DR	MBP	DATE
03	1/9/2023	Updated Panel and Added Fastener	KRK		CastleTop Inside Corner Detail			8/5/2016
02	6/23/2020	Added Color Side Note.	KRK			DWG. NO.	APP	DATE
01	5/16/2018	Updated 1 1/2" on Inside Corner Post to an Open Hem	KRK			MATERIAL	SH. SIZE	SCALE
						B	X:X	

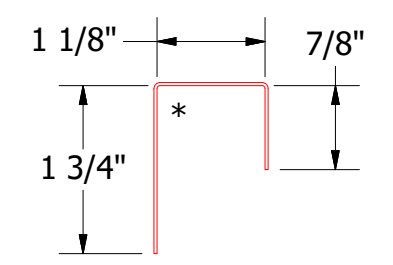
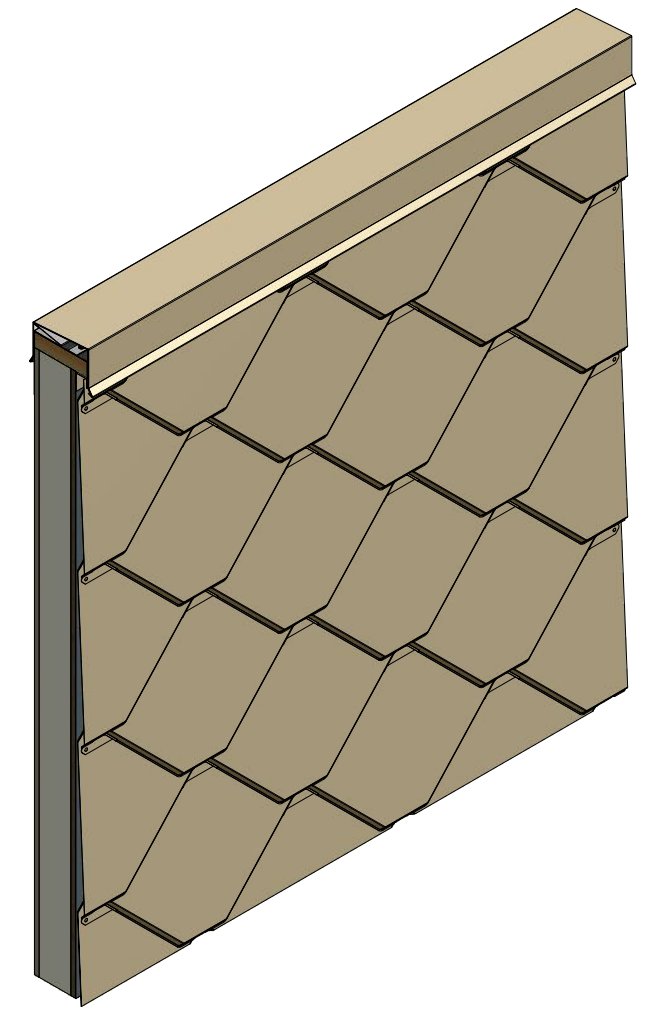
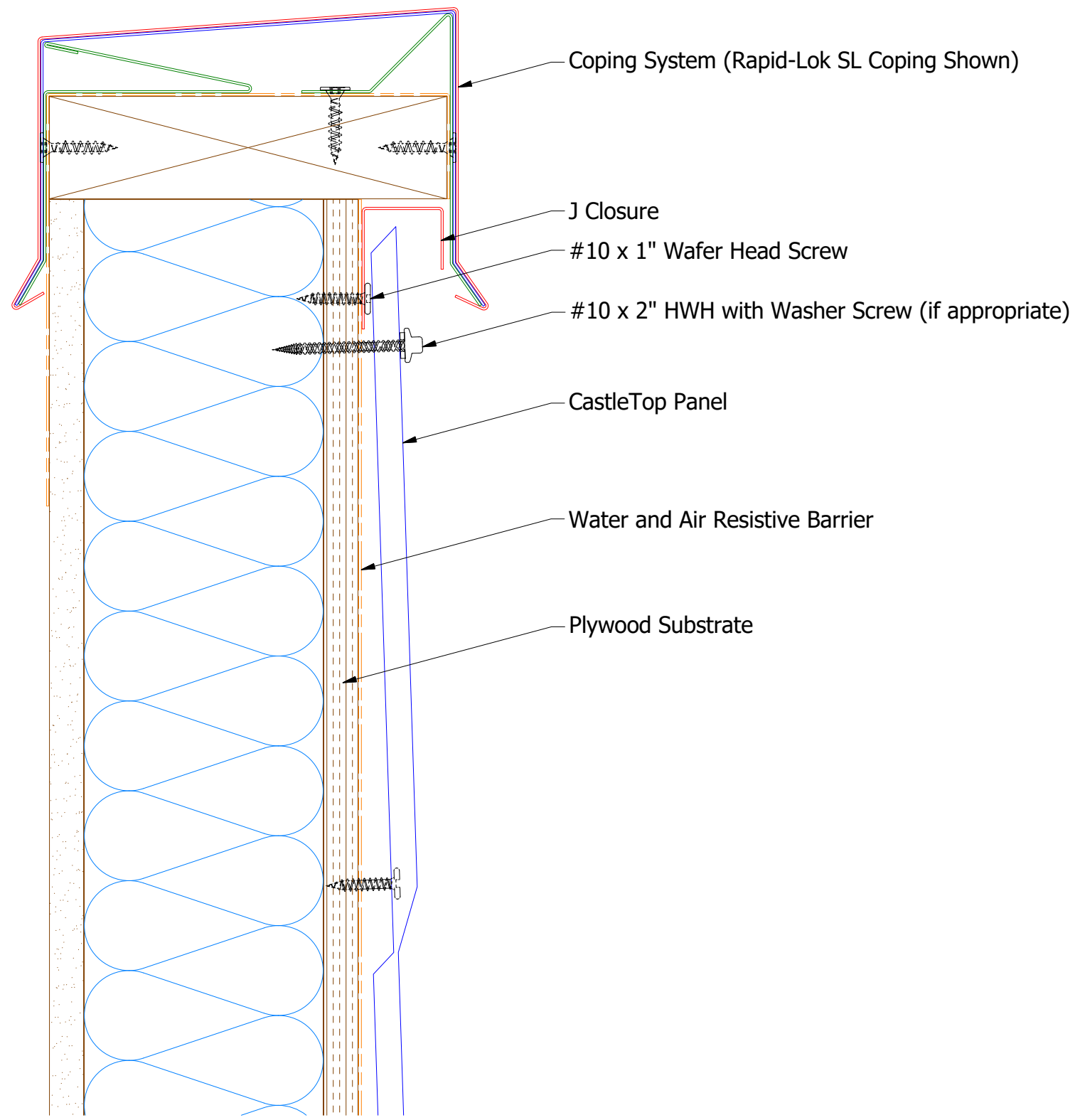


HCA602 - Outside Corner Post

Note: * denotes color side.
 Note: If Hex Washer Head Screw is used, do not Overdrive the Fastener.

ATAS ATAS INTERNATIONAL, INC
 Allentown PA
 610-395-8445
 Mesa AZ
 480-558-7210

REV. NO.	DATE	DESCRIPTION OF REVISION	BY	APP	TITLE	DR	DATE
03	1/9/2023	Updated Panel and Added Fastener	KRK		CastleTop Outside Corner Detail	MBP	8/5/2016
02	6/23/2020	Added Color Side Note.	KRK			DAS	8/5/16
01	5/16/2018	Updated 1 1/2" on Outside Corner Post to an Open Hem	KRK			B	X:X
					DWG. NO.	SH. SIZE	SCALE

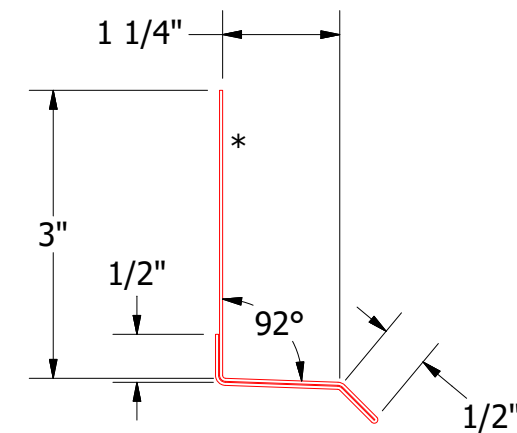
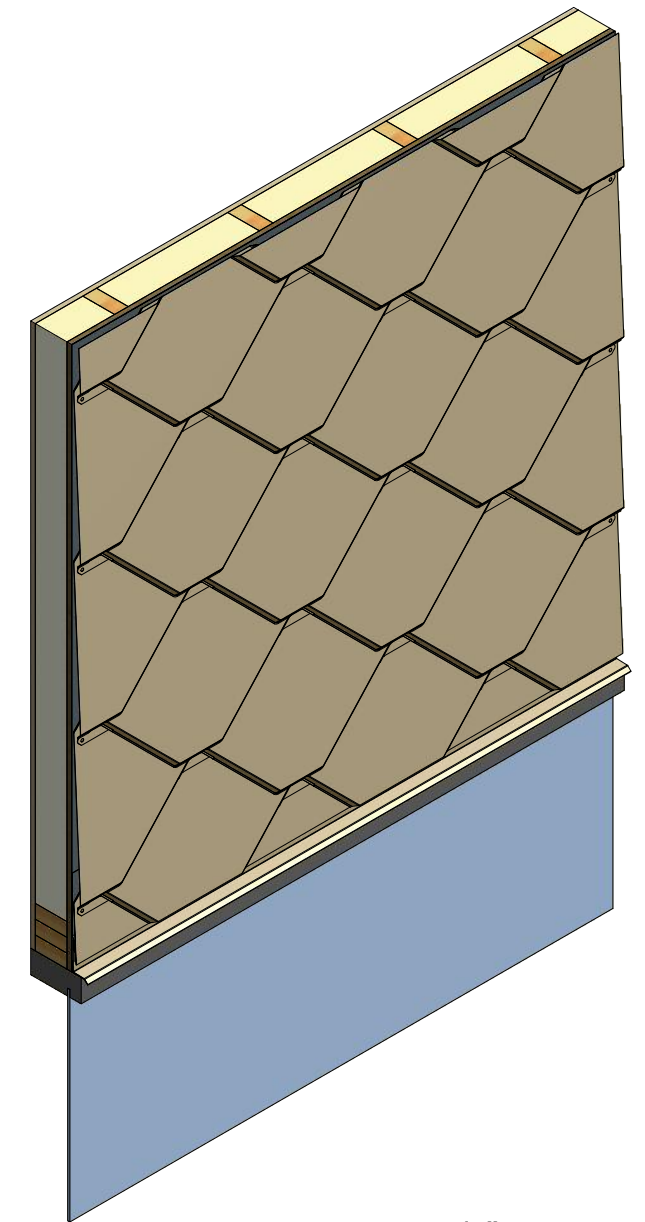
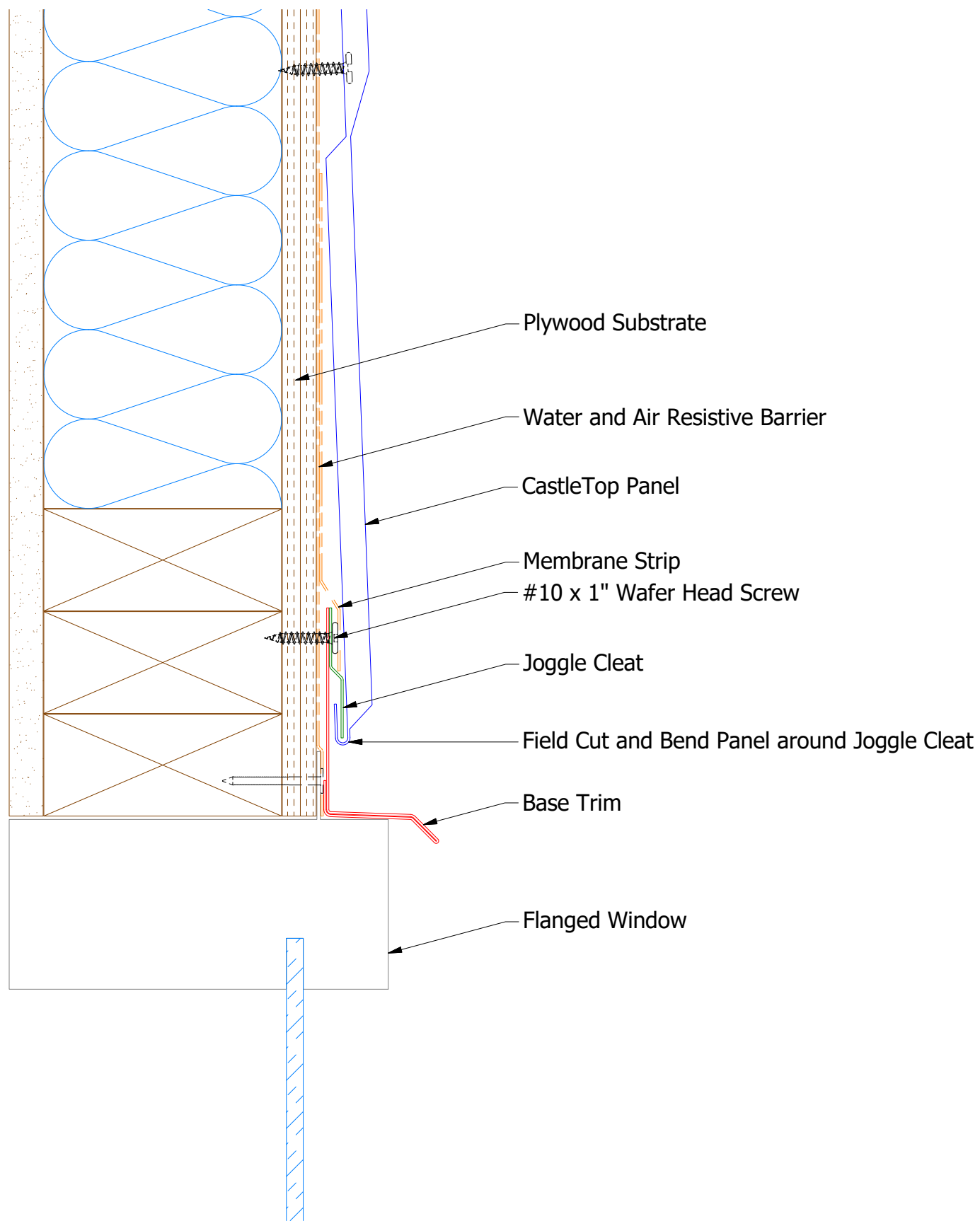


HCA270 - J Closure

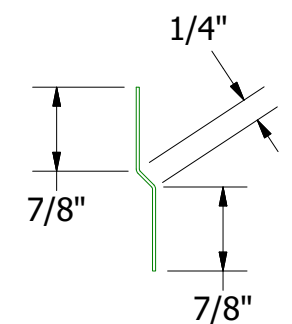
Note: * denotes color side.
 Note: If Hex Washer Head Screw is used, do not Overdrive the Fastener.

ATAS ATAS INTERNATIONAL, INC
 Allentown PA
 610-395-8445
 Mesa AZ
 480-558-7210

REV. NO.	DATE	DESCRIPTION OF REVISION	BY	APP	TITLE	DR	DATE
02	1/9/2023	Updated Fastener	KRK		CastleTop Top of Wall Detail	MBP	8/5/2016
01	6/23/2020	Updated Rapid-Lok Coping Profile and Added Color Side Note.	KRK			DAS	8/5/16
						SH. SIZE	B
						SCALE	X:X



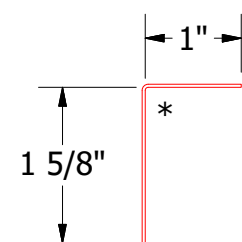
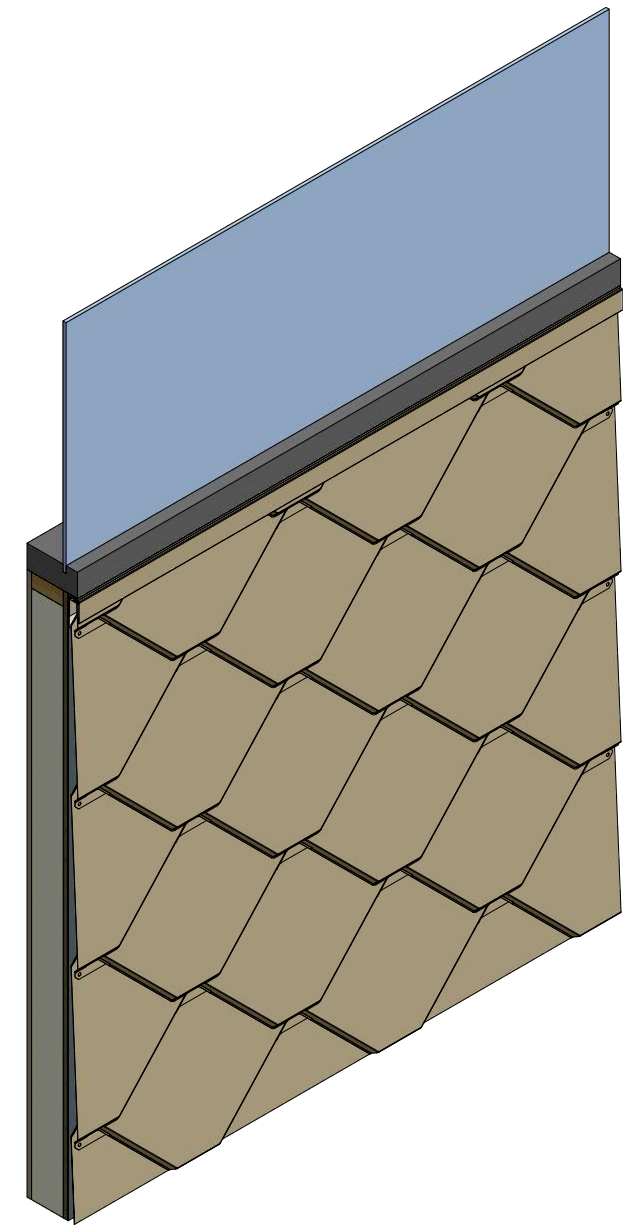
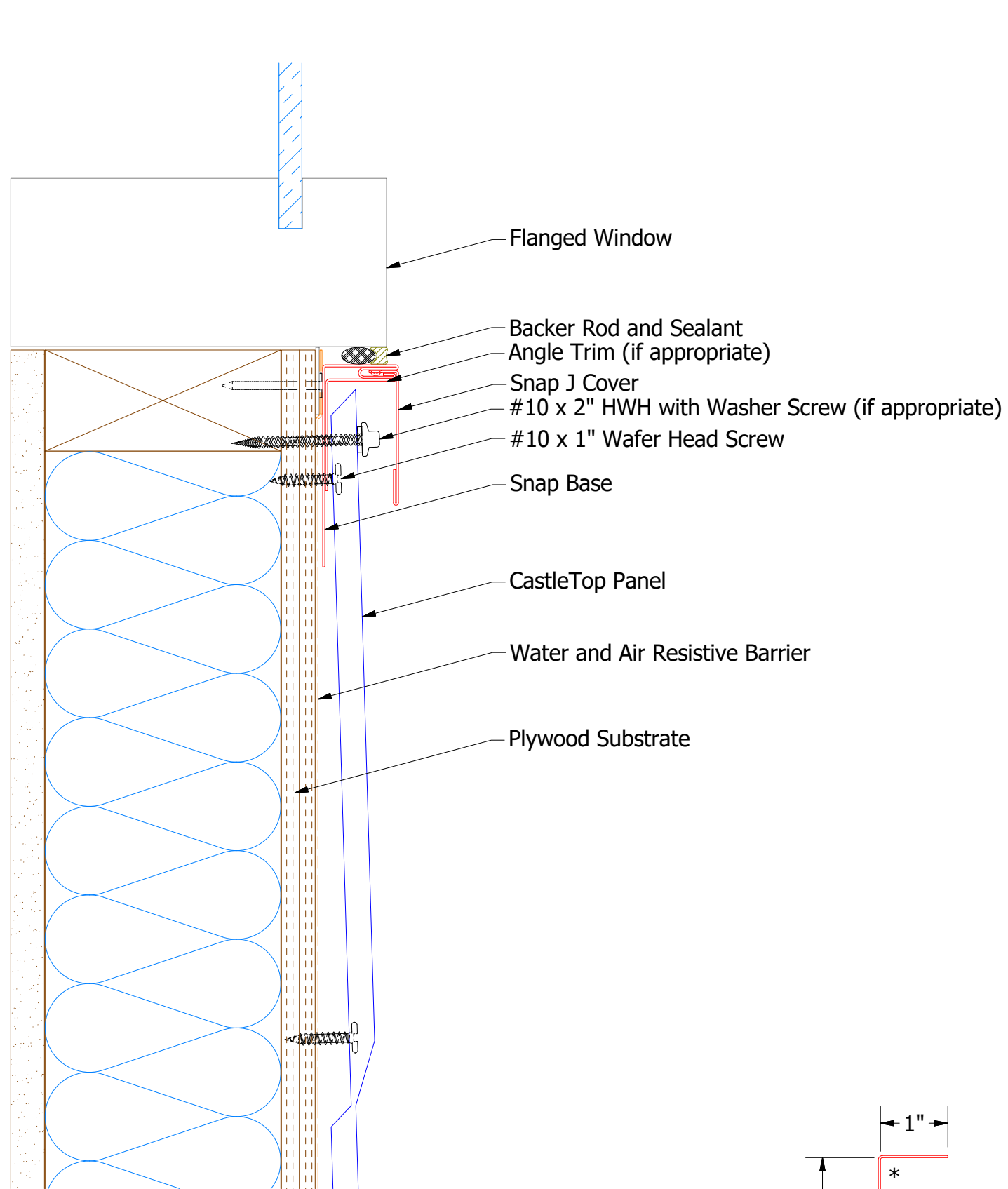
HCA661 - Base Trim - Standard



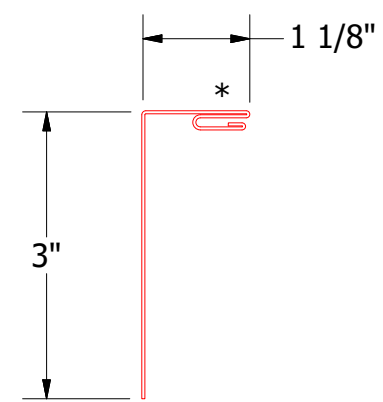
HCA975 - Joggle Cleat

Note: * denotes color side.

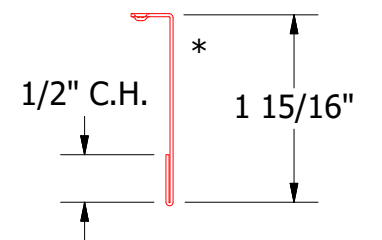
		ATAS INTERNATIONAL, INC Allentown PA 610-395-8445 Mesa AZ 480-558-7210					
		TITLE CastleTop Flanged Window Head Detail					
02	1/9/2023	Removed Base Color Trim	KRK	DWG. NO.	DR	DATE	8/7/2018
01	6/23/2020	Added Base Color Trim SKU and Added Color Side Note.	KRK	APP	MBP	DATE	
REV. NO.	DATE	DESCRIPTION OF REVISION	BY	APP	MATERIAL	SH. SIZE	SCALE
						B	X:X



HCA680 - Angle Trim



HCA119 - Snap Base



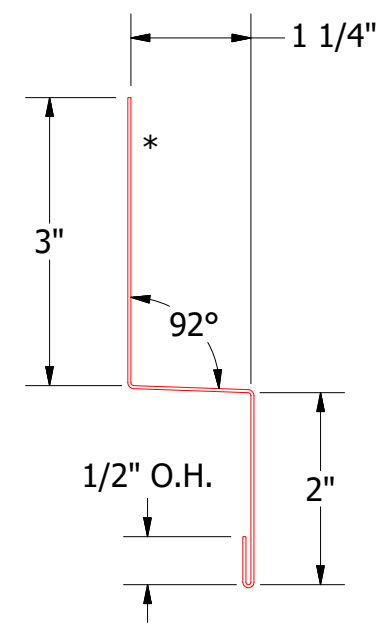
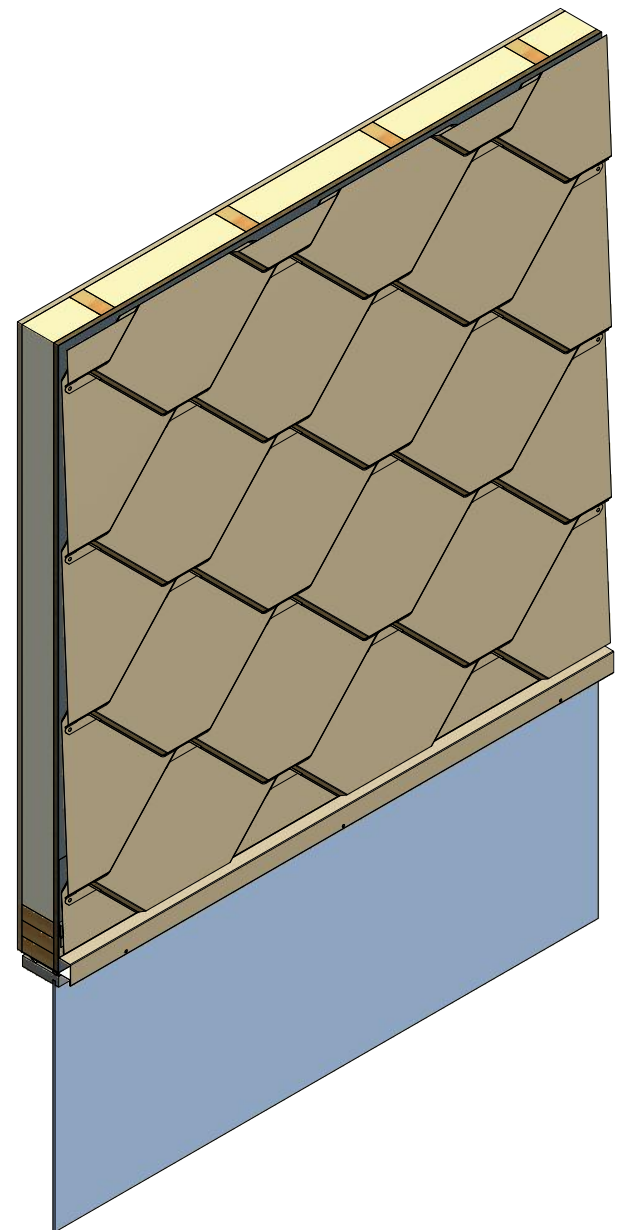
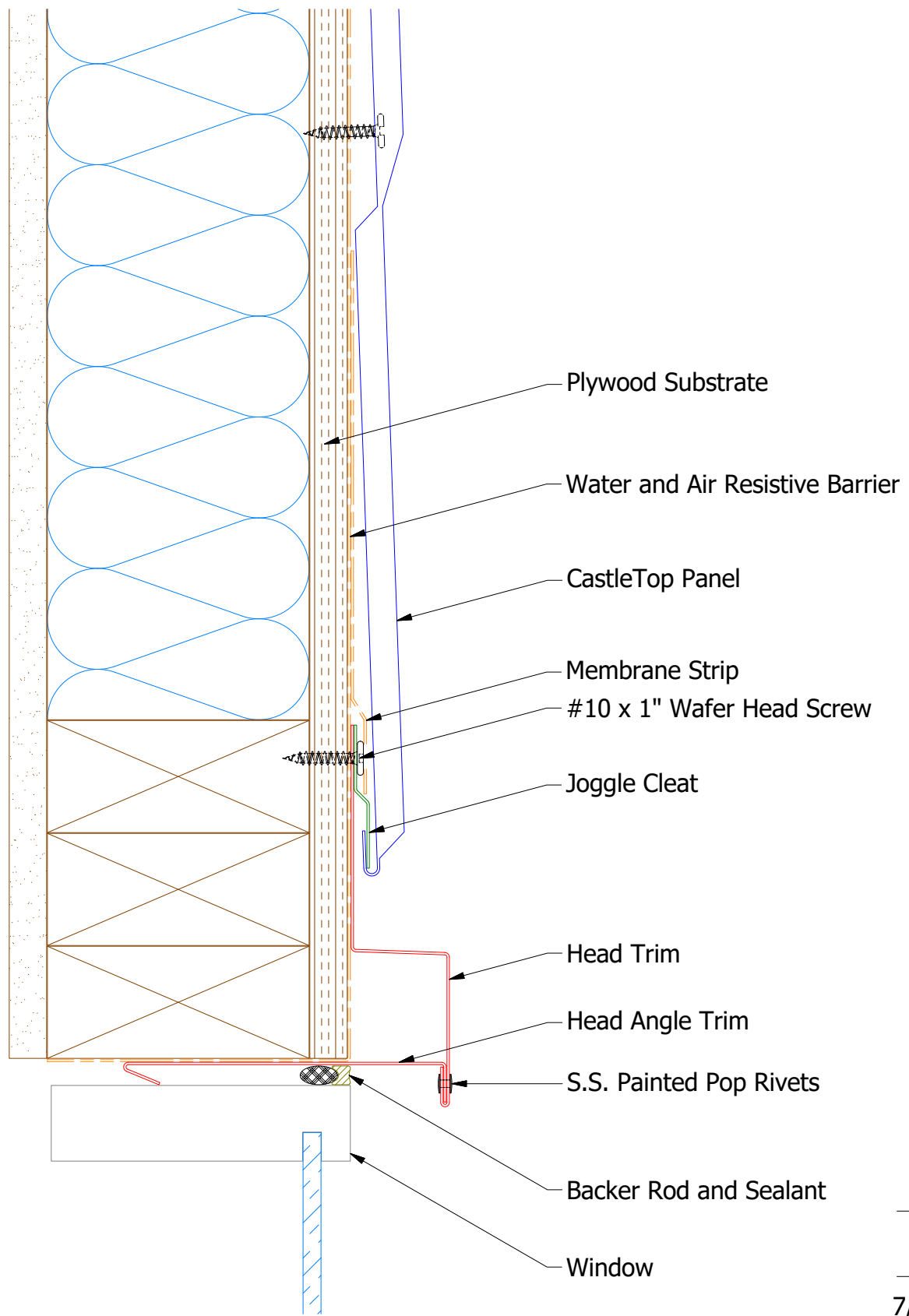
UNS200 - Snap J Cover

Note: * denotes color side.
Note: If Hex Washer Head Screw is used, do not Overdrive the Fastener.

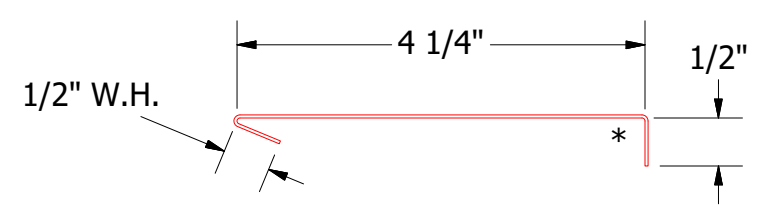
ATAS ATAS INTERNATIONAL, INC
Allentown PA
610-395-8445
Mesa AZ
480-558-7210

TITLE
CastleTop Flanged Window Sill Detail

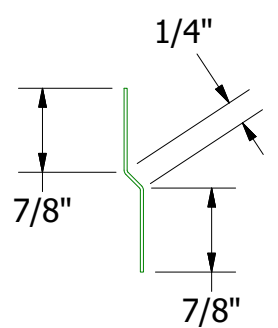
02	1/10/2023	Updated J Channel to Snap Base with Snap J Cover and Optional Angle. Added Optional HWH Screw.	KRK	DWG. NO.	DR MBP	DATE 8/7/2018
01	6/23/2020	Added Color Side Note.	KRK	MATERIAL	APP	DATE
REV. NO.	DATE	DESCRIPTION OF REVISION	BY APP	SH. SIZE	B	SCALE X:X



HCA550 - Head Trim



HCA690 - Head Angle Trim

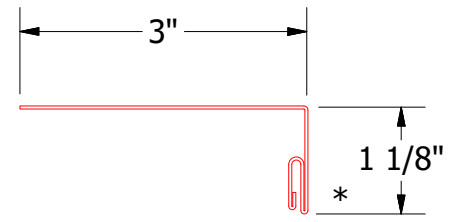
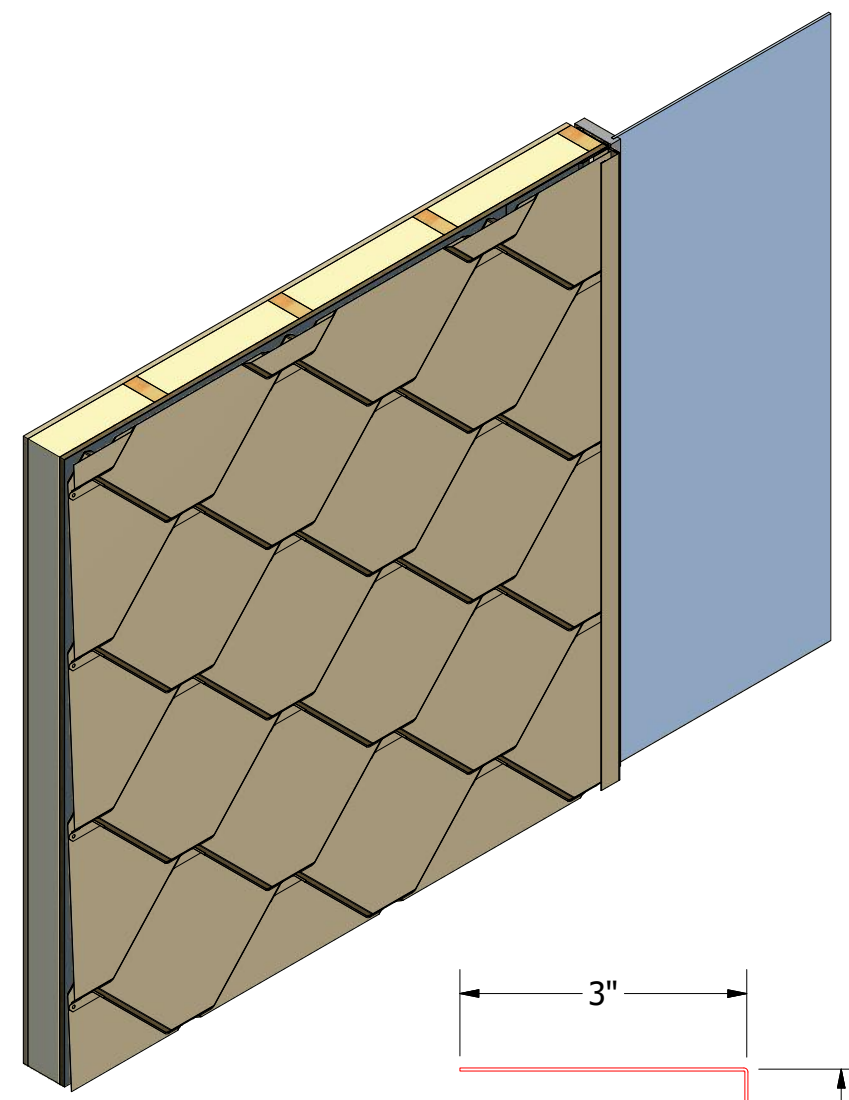
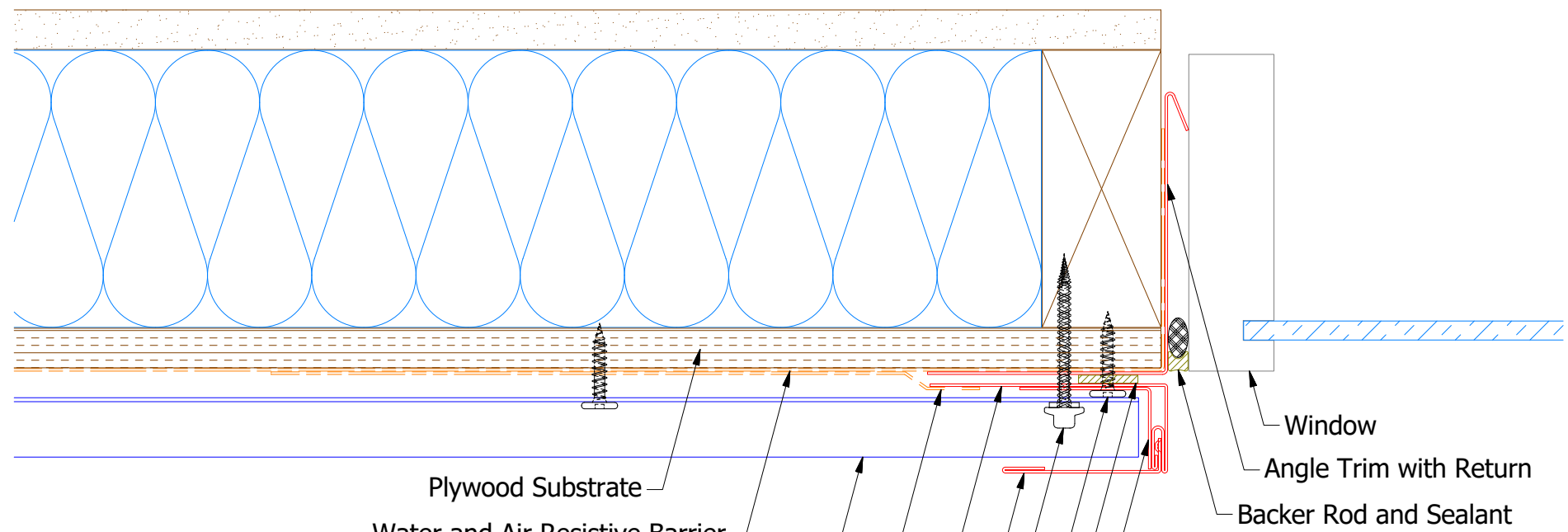


HCA975 - Joggle Cleat

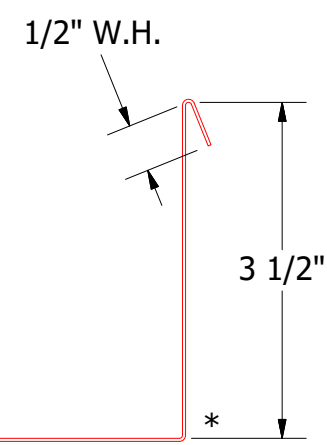
Note: * denotes color side.


ATAS INTERNATIONAL, INC
 Allentown PA
 610-395-8445
 Mesa AZ
 480-558-7210

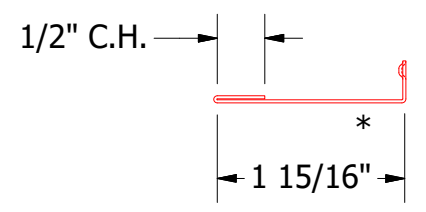
REV. NO.		DATE	DESCRIPTION OF REVISION	BY	APP	TITLE		
03	1/10/2023		Updated Trim Dimensions	KRK		CastleTop Window Head Detail		
02	6/23/2020		Added Base Color Trim SKU and Added Color Side Note.	KRK		DWG. NO.	DR	DATE
01	5/16/2018		Added CastleTop Color Trim and added Painted Pop Rivets to Face of Trim	KRK		MATERIAL	DMR	8/4/2016
						SH. SIZE	DAS	8/5/2016
						B	SCALE	X:X



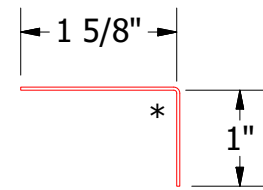
HCA119 - Snap Base



HCA683 - Angle Trim with Return



UNS200 - Snap J Cover

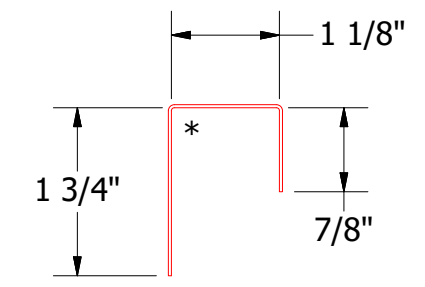
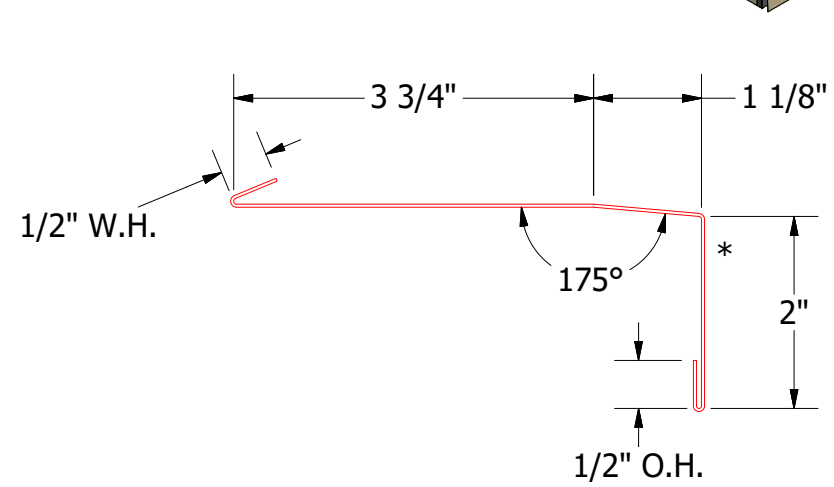
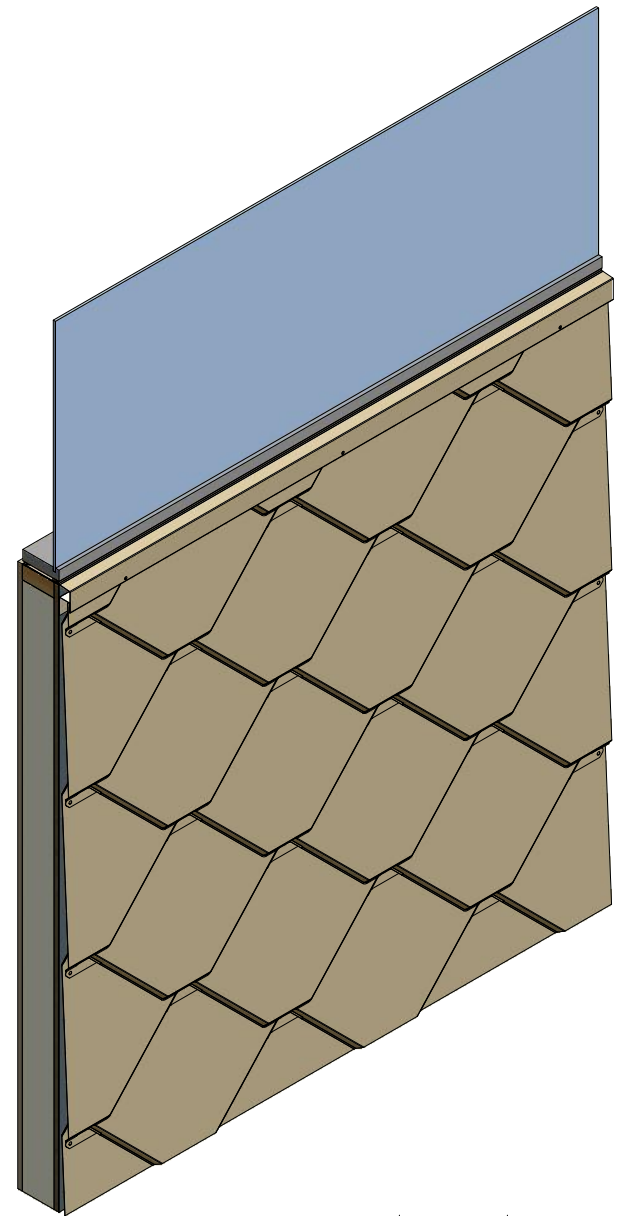
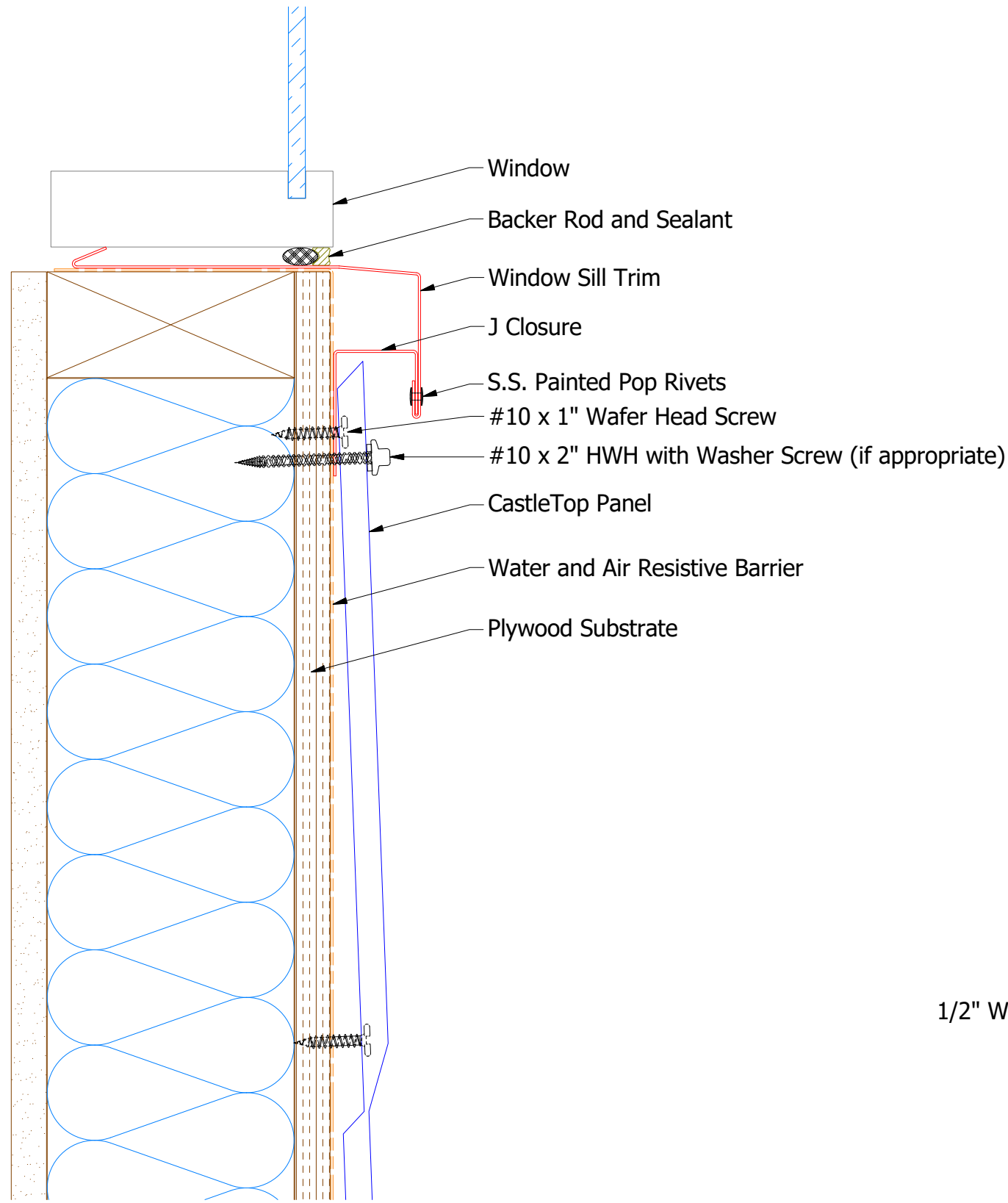


HCA680 - Angle Trim

Note: * denotes color side.
 Note: If Hex Washer Head Screw is used, do not Overdrive the Fastener.


ATAS INTERNATIONAL, INC
 Allentown PA
 610-395-8445
 Mesa AZ
 480-558-7210

TITLE				CastleTop Window Jamb Detail			
02	1/10/2023	Updated J Channel to Snap Base and Snap J Cover.	KRK	DWG. NO.	DR	MBP	DATE 8/5/2016
01	6/23/2020	Added Color Side Note.	KRK	MATERIAL	APP	DAS	DATE 8/5/16
REV. NO.	DATE	DESCRIPTION OF REVISION	BY	APP	SH. SIZE	B	SCALE X:X



HCA270 - J Closure

HCA670 - Window Sill Trim


ATAS INTERNATIONAL, INC
 Allentown PA
 610-395-8445
 Mesa AZ
 480-558-7210

TITLE		CastleTop Window Sill Detail	
DWG. NO.	DR	DATE	8/5/2016
	MBP		
MATERIAL	APP	DAS	DATE 8/5/2016
	SH. SIZE	B	SCALE X:X

Note: * denotes color side.
 Note: If Hex Washer Head Screw is used, do not Overdrive the Fastener.

03	1/10/2023	Updated Trim Dimensions	KRK
02	6/23/2020	Added Color Side Note.	KRK
01	5/16/2018	Removed Fastener behind Window and added Pop Rivet to Trim Face	KRK
REV. NO.	DATE	DESCRIPTION OF REVISION	BY APP