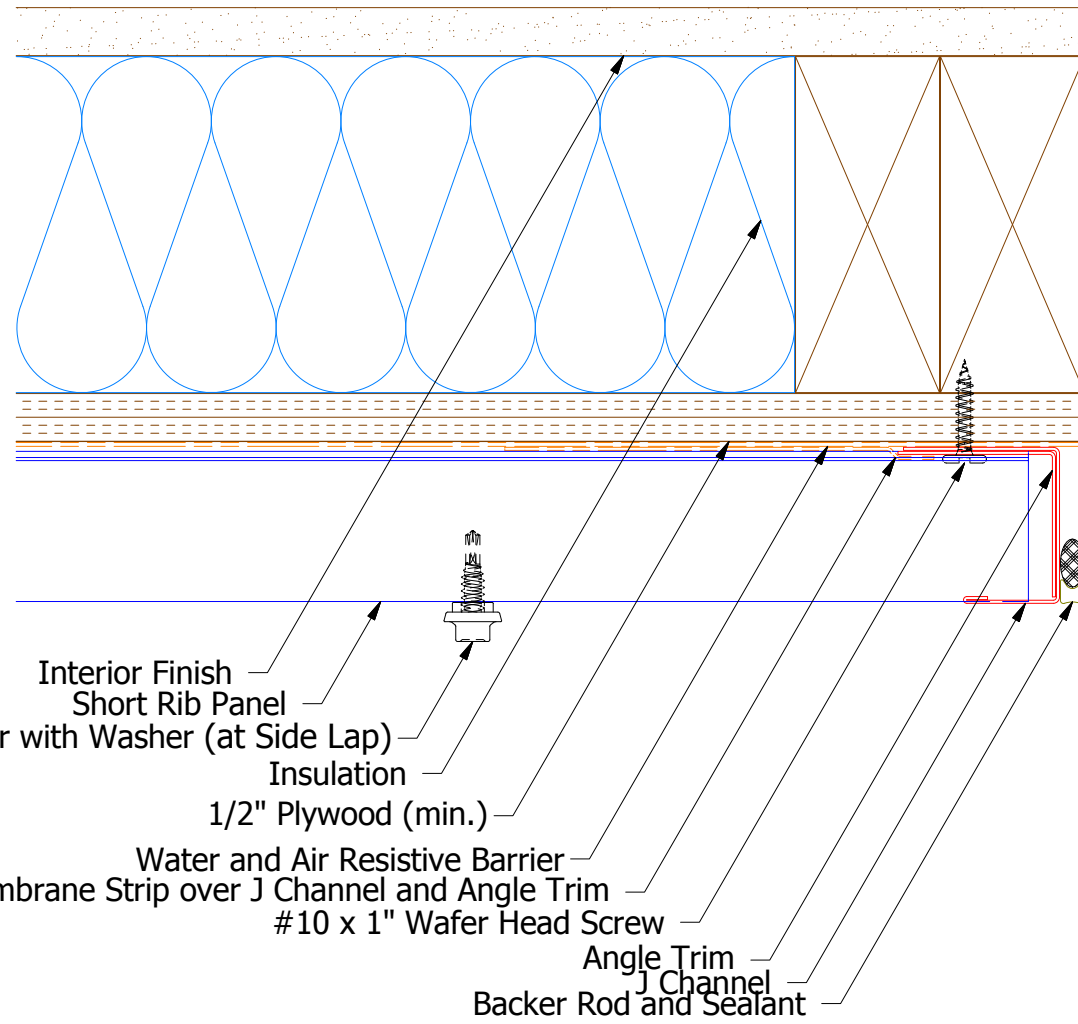
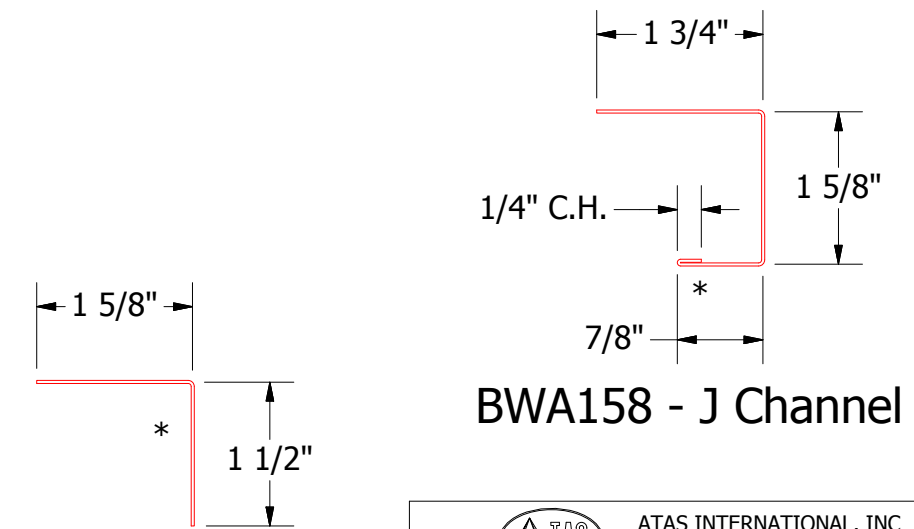
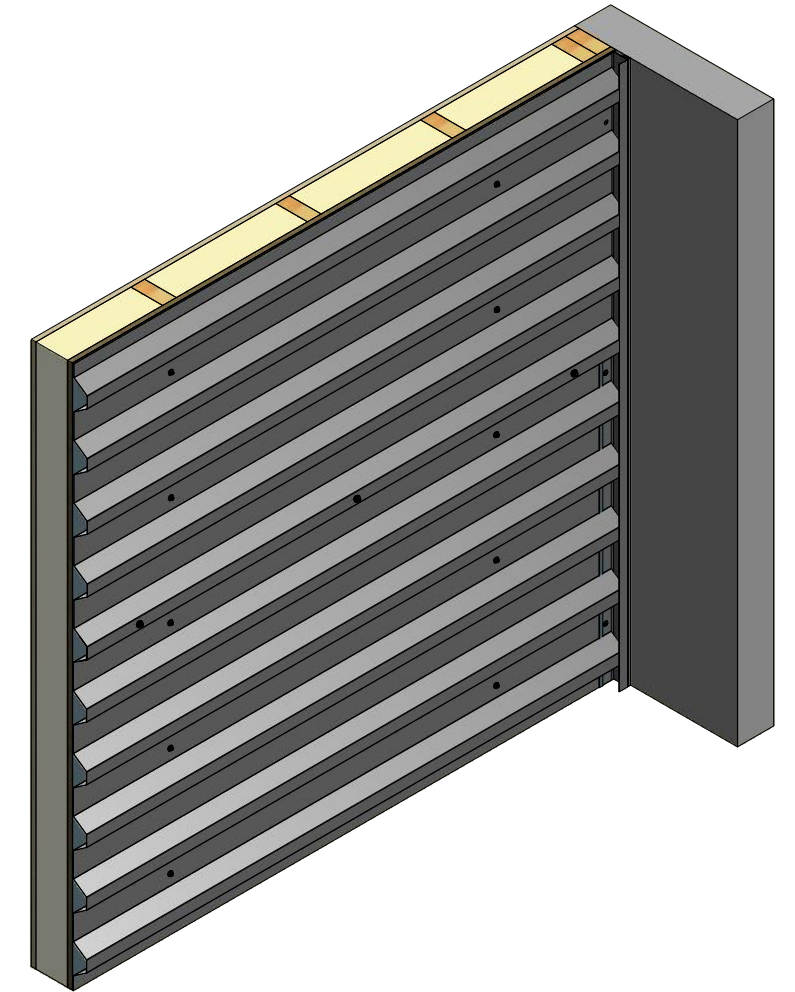


# Horizontal Panel



#14 x 7/8" Painted Hex Washer Head Fastener with Washer (at Side Lap)

- Interior Finish
- Short Rib Panel
- Insulation
- 1/2" Plywood (min.)
- Water and Air Resistive Barrier
- Membrane Strip over J Channel and Angle Trim
- #10 x 1" Wafer Head Screw
- Angle Trim
- J Channel
- Backer Rod and Sealant



BWA680 - Angle Trim

BWA158 - J Channel

**ATAS** ATAS INTERNATIONAL, INC  
 Allentown PA  
 610-395-8445  
 Mesa AZ  
 480-558-7210

TITLE Belvedere Short Rib Endwall Detail			
DWG. NO.	DR	DATE	6/12/2015
	KRK		
MATERIAL	APP	DAS	DATE 7/21/16
	SH. SIZE	B	SCALE X:X
REV. NO.	DATE	DESCRIPTION OF REVISION	BY APP