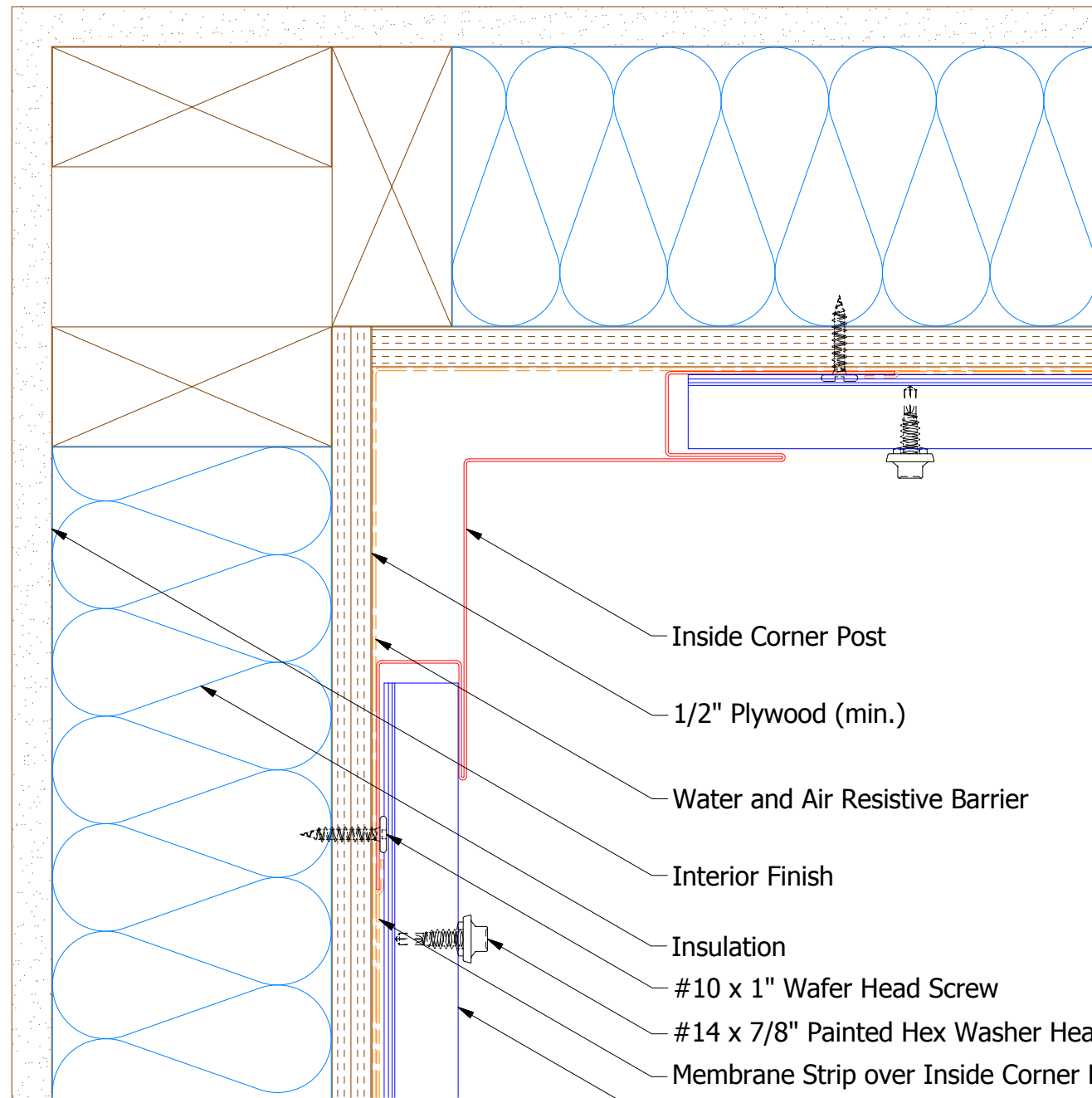
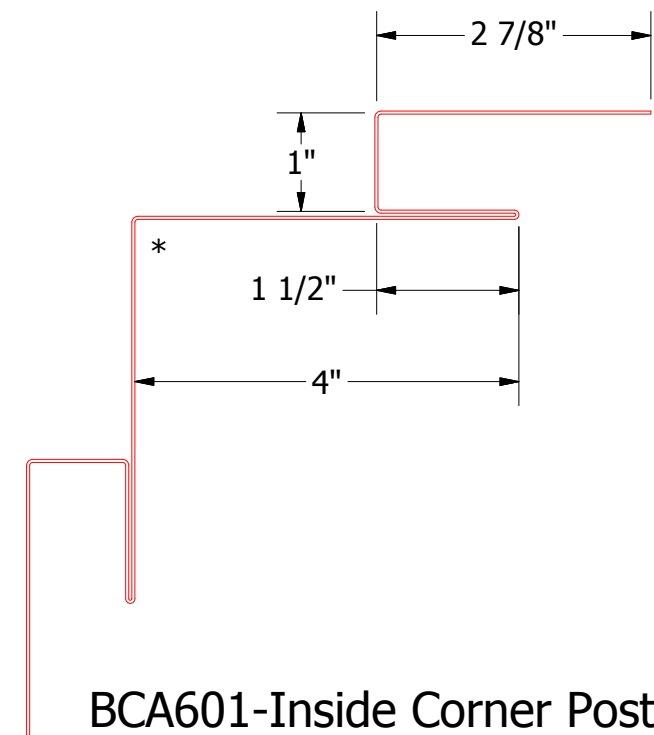
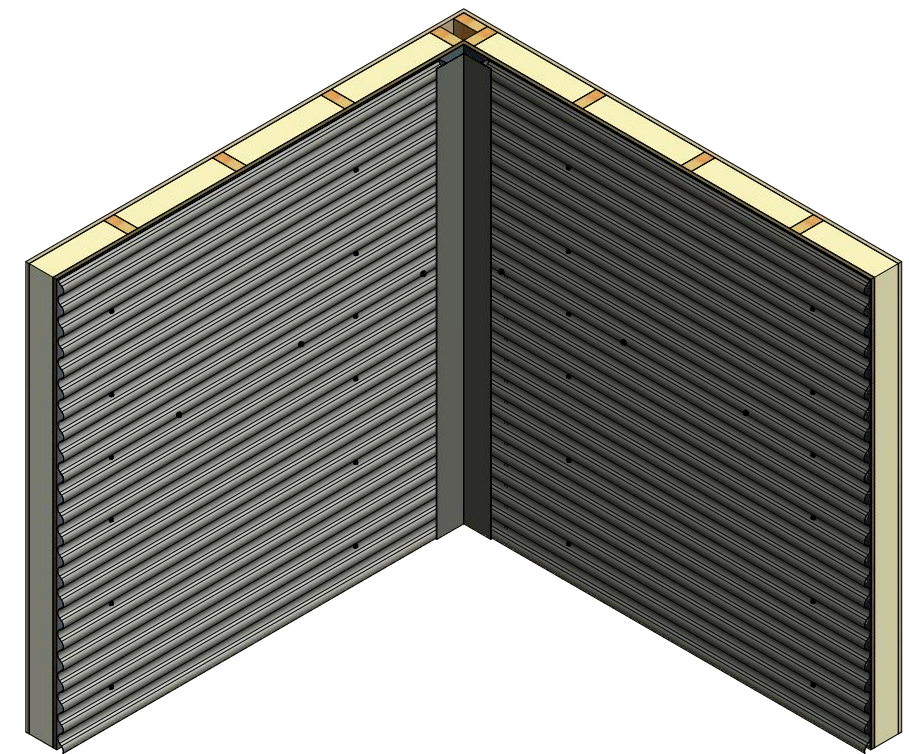


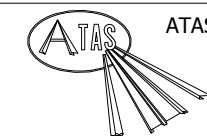
Horizontal Panel



- Inside Corner Post
- 1/2" Plywood (min.)
- Water and Air Resistive Barrier
- Interior Finish
- Insulation
- #10 x 1" Wafer Head Screw
- #14 x 7/8" Painted Hex Washer Head Fastener with Washer (at Panel Lap)
- Membrane Strip over Inside Corner Post
- Corrugated Panel



BCA601-Inside Corner Post



ATAS INTERNATIONAL, INC
 Allentown PA
 610-395-8445
 Mesa AZ
 480-558-7210

TITLE
Belvedere Corrugated Inside Corner Detail

REV. NO.	DATE	DESCRIPTION OF REVISION	BY	APP	DWG. NO.	DR	KRK	DATE	5/8/2015
						APP	DAS	DATE	7/29/16
					MATERIAL	SH. SIZE	B	SCALE	X:X