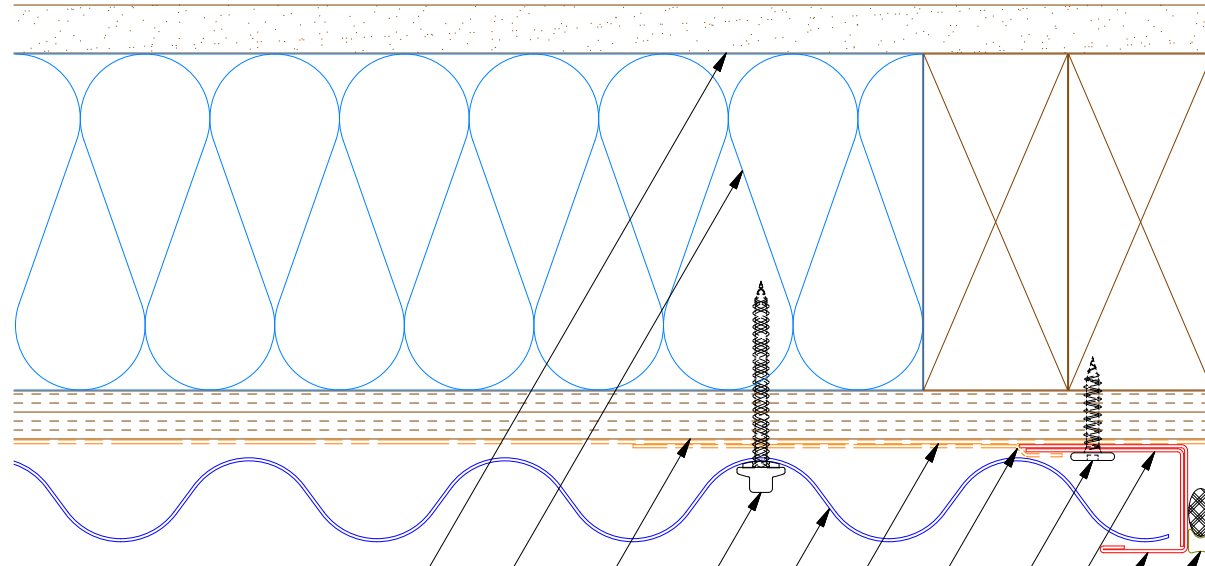
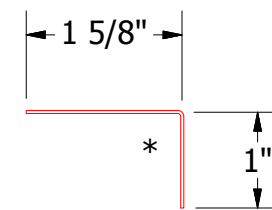
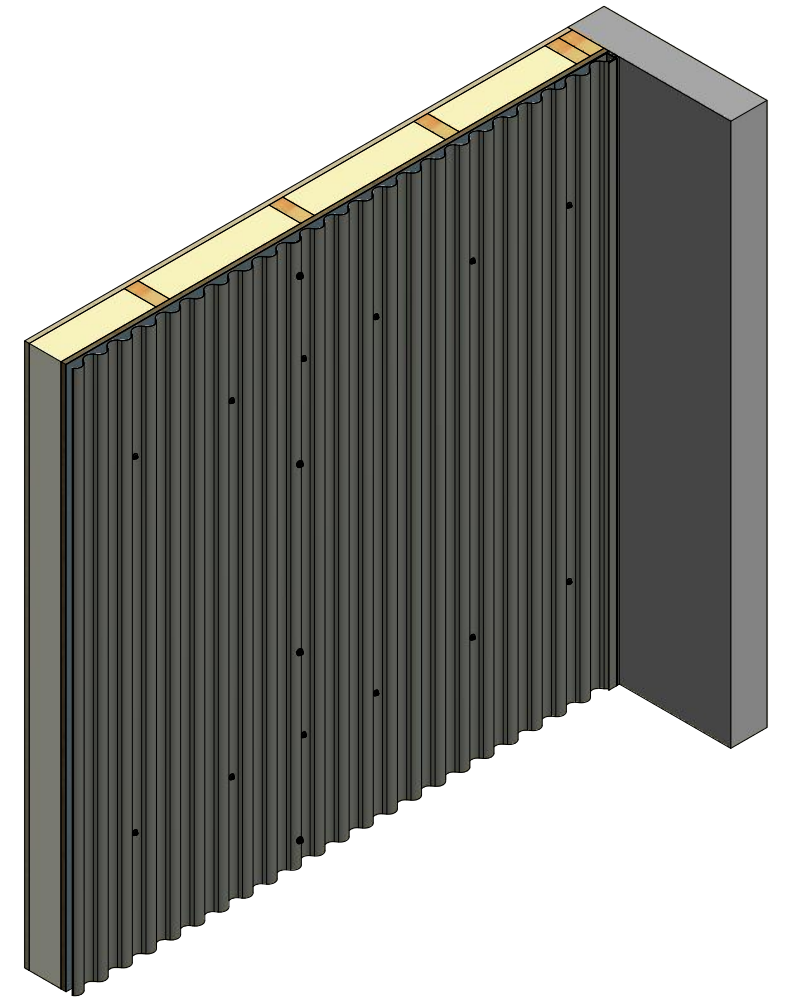


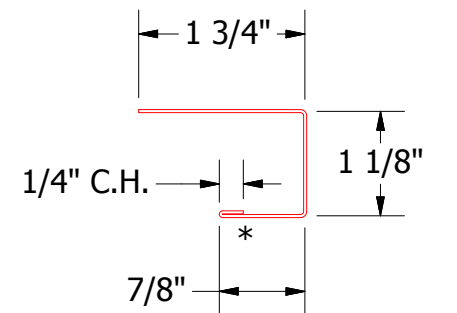
Vertical Panel



- Interior Finish
- Insulation
- 1/2" Plywood (min.)
- #10 x 2" Painted Hex Washer Head Fastener with Washer
- Corrugated Panel
- Water and Air Resistive Barrier
- Membrane Strip over J Channel and Angle Trim
- #10 x 1" Wafer Head Screw
- Angle Trim
- J Channel
- Backer Rod and Sealant



BCA680-Angle Trim



BCA118-J Channel

ATAS ATAS INTERNATIONAL, INC
 Allentown PA
 610-395-8445
 Mesa AZ
 480-558-7210

| REV. NO. | DATE | DESCRIPTION OF REVISION | BY | APP | TITLE | DR | DATE |
|----------|------|-------------------------|----|-----|-------------------------------------|-----|-----------|
| | | | | | Belvedere Corrugated Endwall Detail | KRK | 5/8/2015 |
| | | | | | | DAS | |
| | | | | | MATERIAL | | |
| | | | | | SH. SIZE | B | SCALE X:X |