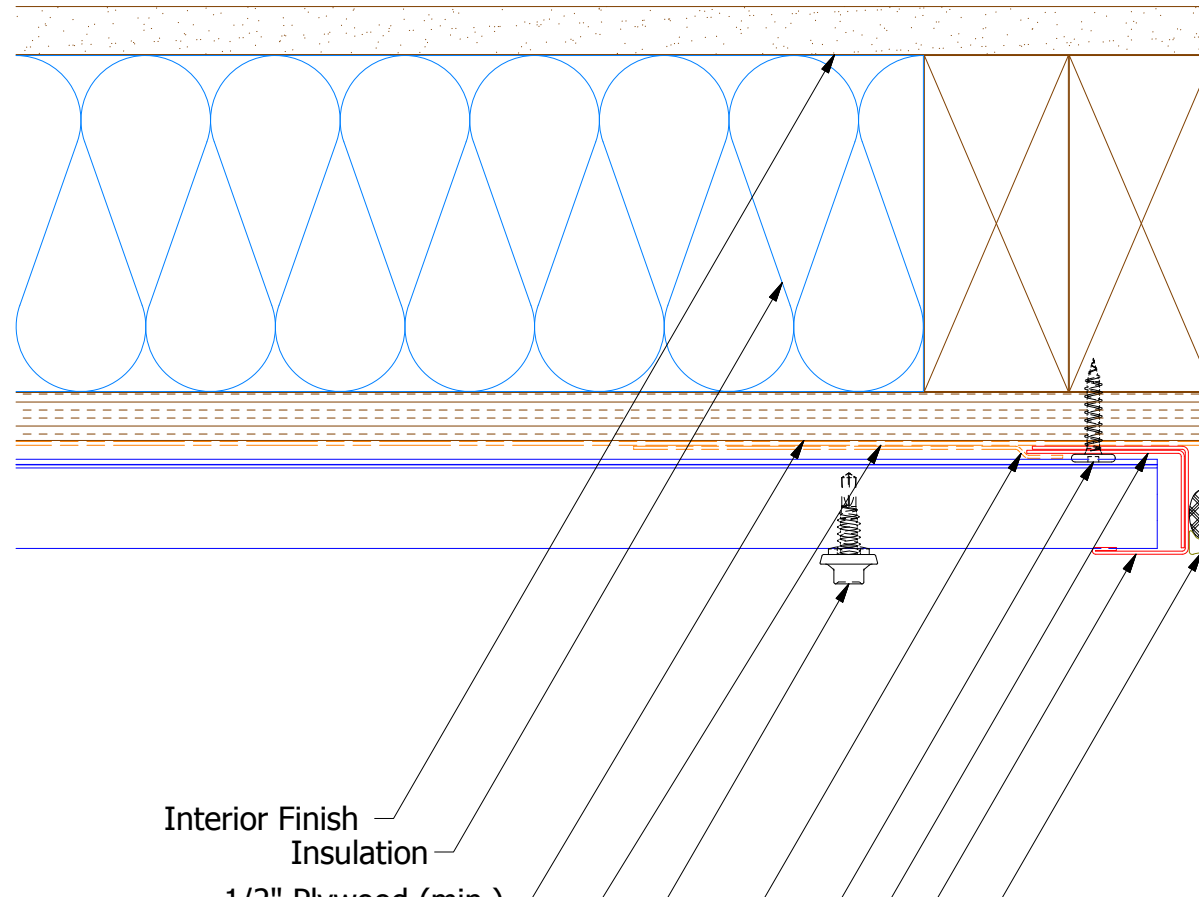
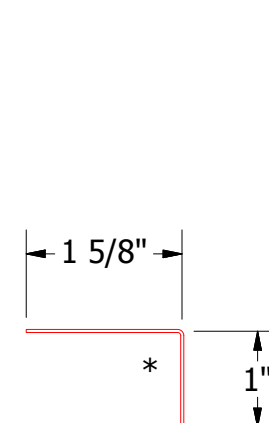
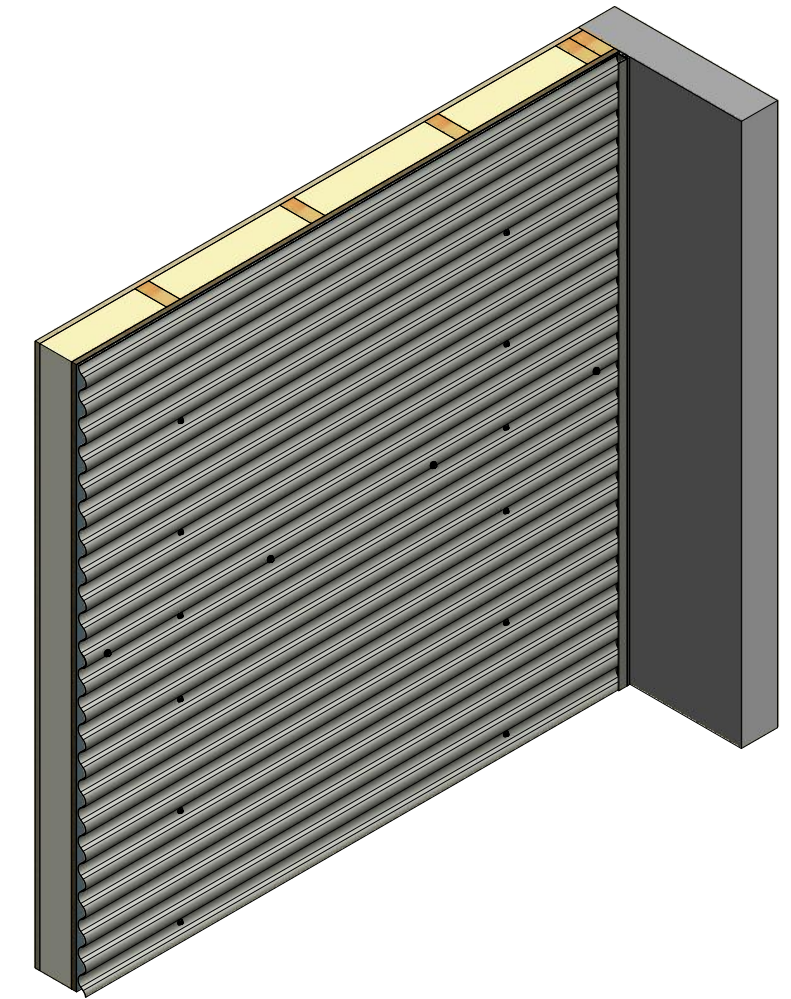


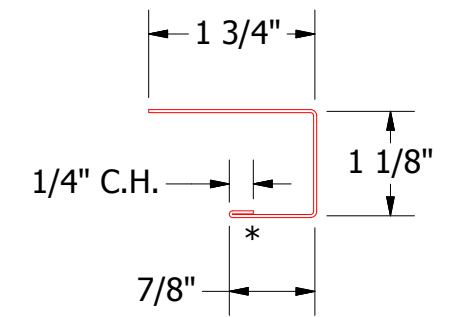
Horizontal Panel



- Interior Finish
- Insulation
- 1/2" Plywood (min.)
- Water and Air Resistive Barrier
- #14 x 7/8" Painted Hex Washer Head Fastener with Washer (at Panel Lap)
- Membrane Strip over Angle Trim and J Channel
- #10 x 1" Wafer Head Screw
- Angle Trim
- J Channel
- Backer Rod and Sealant



BCA680-Angle Trim



BCA118-J Channel

ATAS ATAS INTERNATIONAL, INC
 Allentown PA
 610-395-8445
 Mesa AZ
 480-558-7210

REV. NO.	DATE	DESCRIPTION OF REVISION	BY	APP	TITLE	DR	DATE
					Belvedere Corrugated Endwall Detail	KRK	5/8/2015
						DAS	
					MATERIAL		
					SH. SIZE	B	SCALE X:X