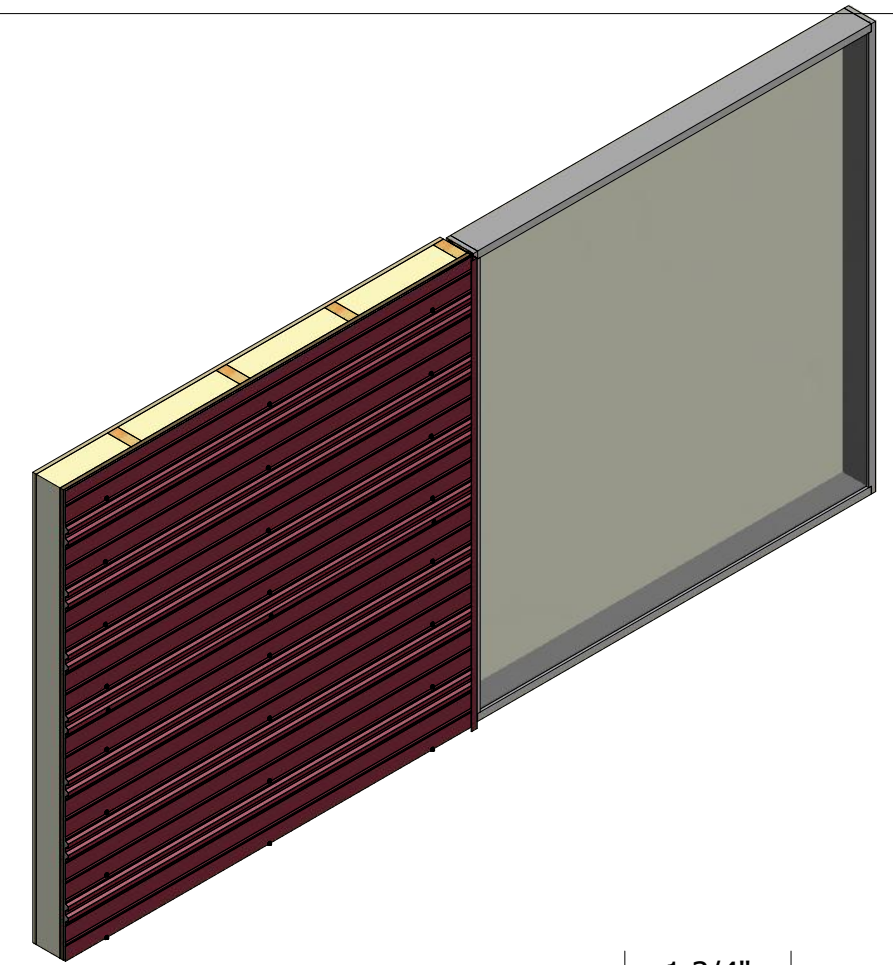
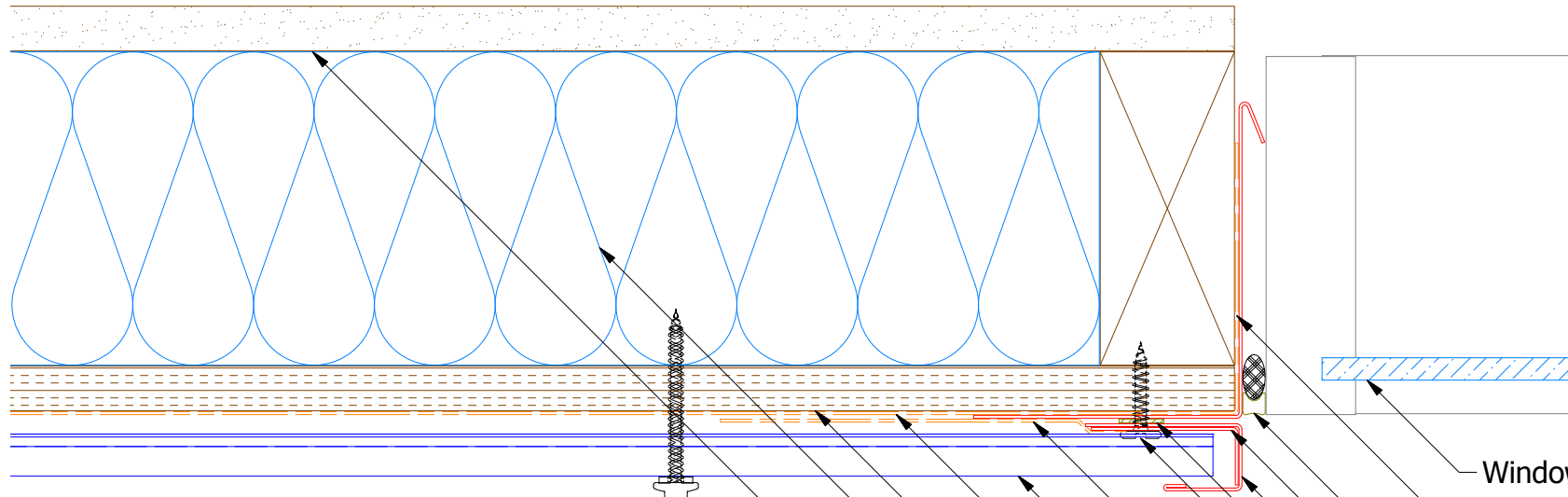
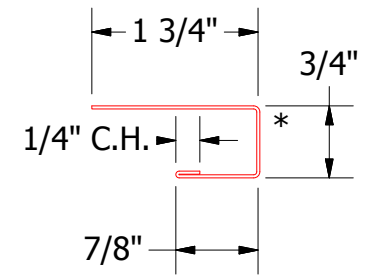


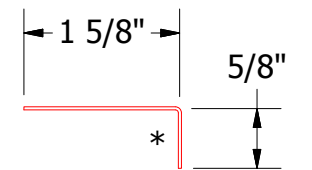
Horizontal Panel



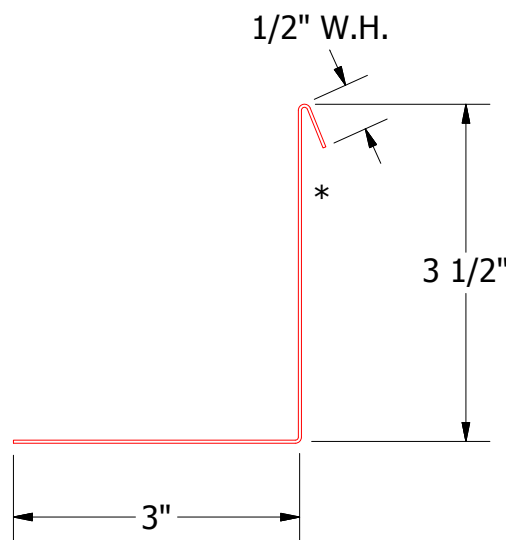
- Window
- Angle Trim with Return
- Backer Rod and Sealant
- Angle Trim
- J Channel
- Butyl Tape
- #10 x 2" Wafer Head Screw
- Membrane Strip over J Channel and Angle Trim
- Grand V Panel
- Water and Air Resistive Barrier
- 1/2" Plywood (min.)
- Insulation
- Interior Finish
- #10 x 2" Painted Hex Washer Head Screw with Washer



BGA034 - J Channel



BGA680 - Angle Trim



BGA683 - Angle Trim with Return

ATAS ATAS INTERNATIONAL, INC
 Allentown PA
 610-395-8445
 Mesa AZ
 480-558-7210

TITLE		Grand V Jamb Detail	
DWG. NO.	DR	DATE	6/14/2016
	DMR	DATE	8/8/16
MATERIAL	APP	DAS	
SH. SIZE	B	SCALE	X:X

REV. NO.	DATE	DESCRIPTION OF REVISION	BY	APP