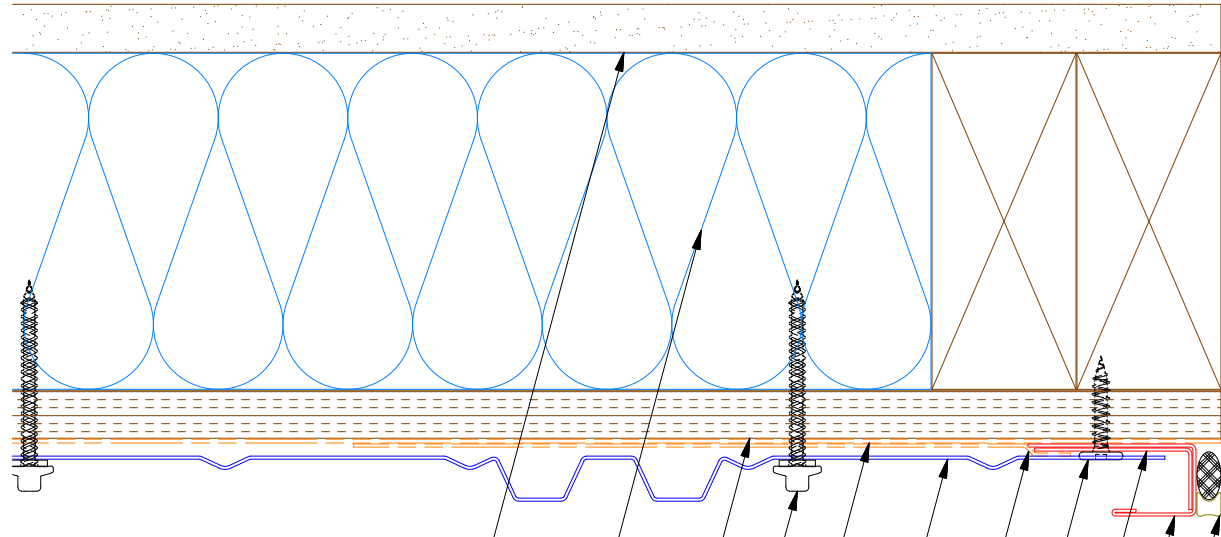
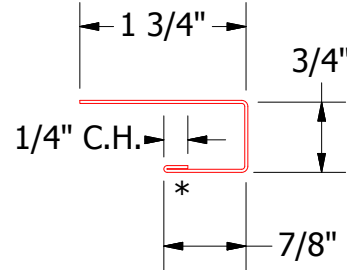
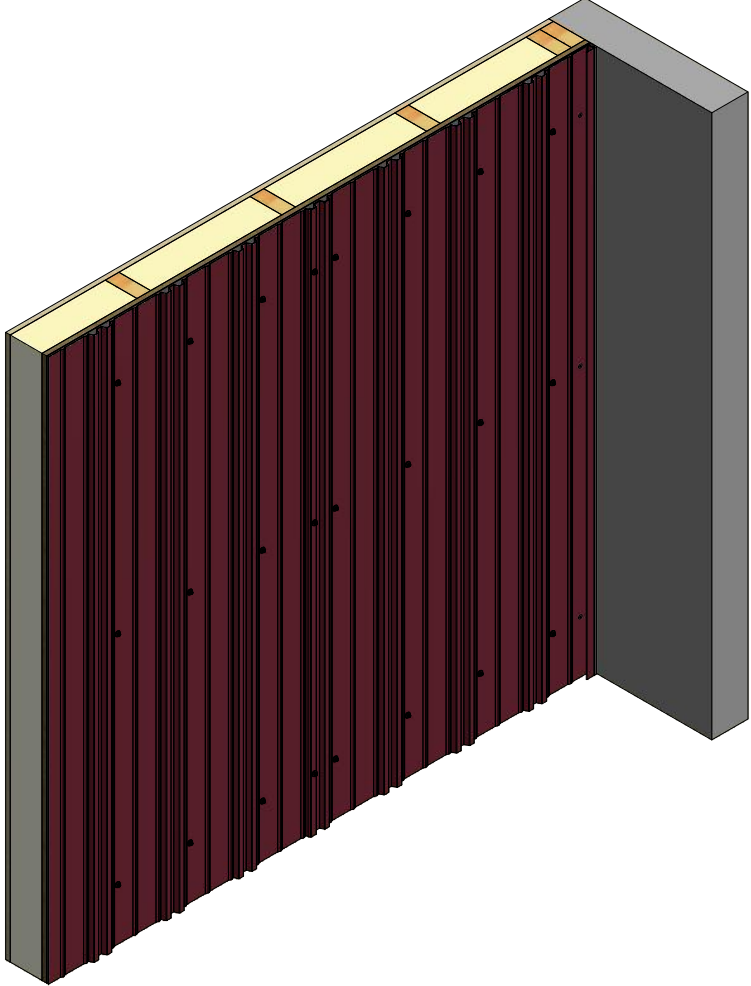


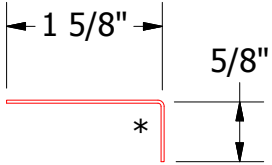
Vertical Panel



- Interior Finish
- Insulation
- 1/2" Plywood
- #10 x 2" Painted Hex Washer Head Screw with Washer
- Water and Air Resistive Barrier
- Grand V Panel
- Membrane Strip Over Angle Trim and Fastener
- #10 x 1" Wafer Head Screw
- Angle Trim
- J Channel
- Backer Rod and Sealant



BGA034 - J Channel



BGA680 - Angle Trim

ATAS ATAS INTERNATIONAL, INC
 Allentown PA
 610-395-8445
 Mesa AZ
 480-558-7210

TITLE		Grand V Endwall Detail	
DWG. NO.	DR	DATE	6/13/2016
	DMR	DATE	
MATERIAL	APP	DATE	
SH. SIZE	B	SCALE	X:X

REV. NO.	DATE	DESCRIPTION OF REVISION	BY	APP