

**ATAS**  
**ATAS INTERNATIONAL, INC**  
 Allentown PA  
 610-395-8445  
 Mesa AZ  
 480-558-7210

TITLE  
 Horizontal Wall-Aluminum Extrusion-Base

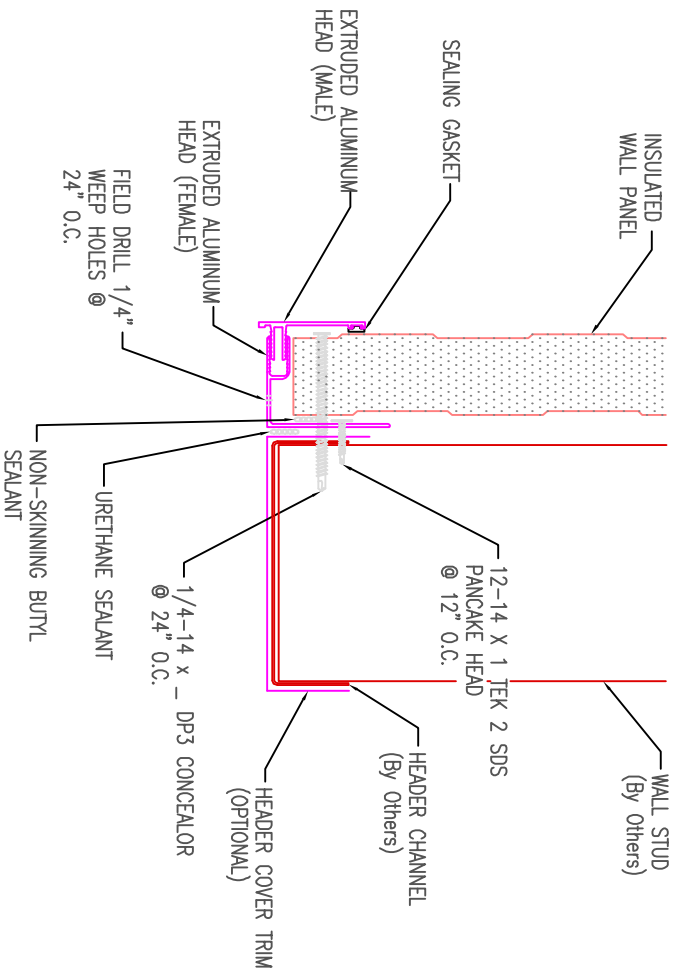
DWG. NO. \_\_\_\_\_ DR. \_\_\_\_\_ DATE \_\_\_\_\_

MATERIAL \_\_\_\_\_ APP. \_\_\_\_\_ DATE \_\_\_\_\_

SH. SIZE \_\_\_\_\_ SCALE \_\_\_\_\_

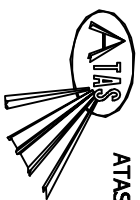
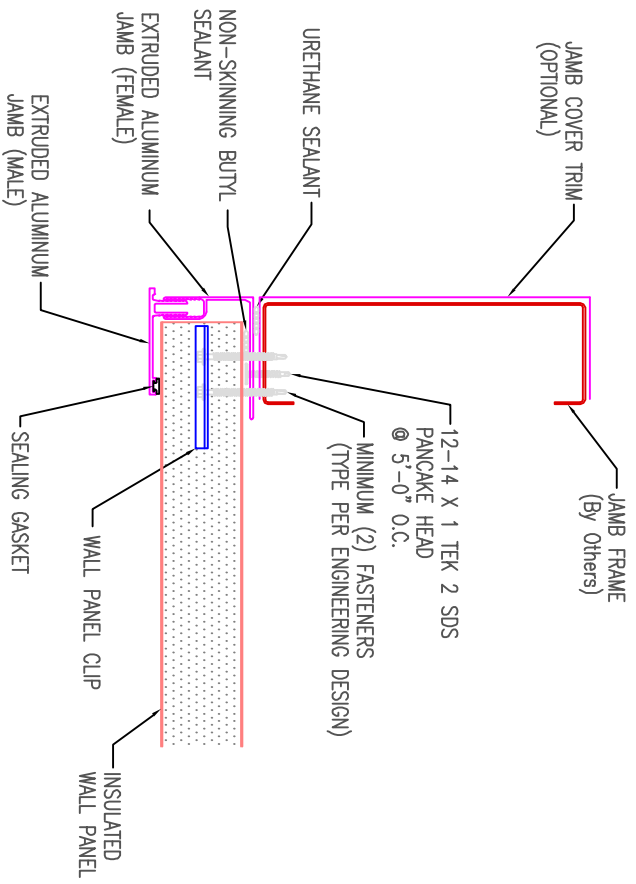
REV. NO.	DATE	DESCRIPTION OF REVISION	BY	APP

X:X




  
**ATLAS INTERNATIONAL, INC**  
 Allentown PA  
 610-395-8445  
 Mesa AZ  
 480-558-7210

REV. NO.	DATE	DESCRIPTION OF REVISION	BY	APP	TITLE	DWG. NO.	DR	DATE	SH. SIZE
					Horizontal Wall-Aluminum Extrusion-Door Head		APP		X:X
					MATERIAL				



**ATAS INTERNATIONAL, INC**

Allentown PA  
 610-395-8445  
 Mesa AZ  
 480-558-7210

**TITLE**

Horizontal Wall-Aluminum Extrusion-Door Jamb

**DWG. NO.**

DR DATE

**MATERIAL**

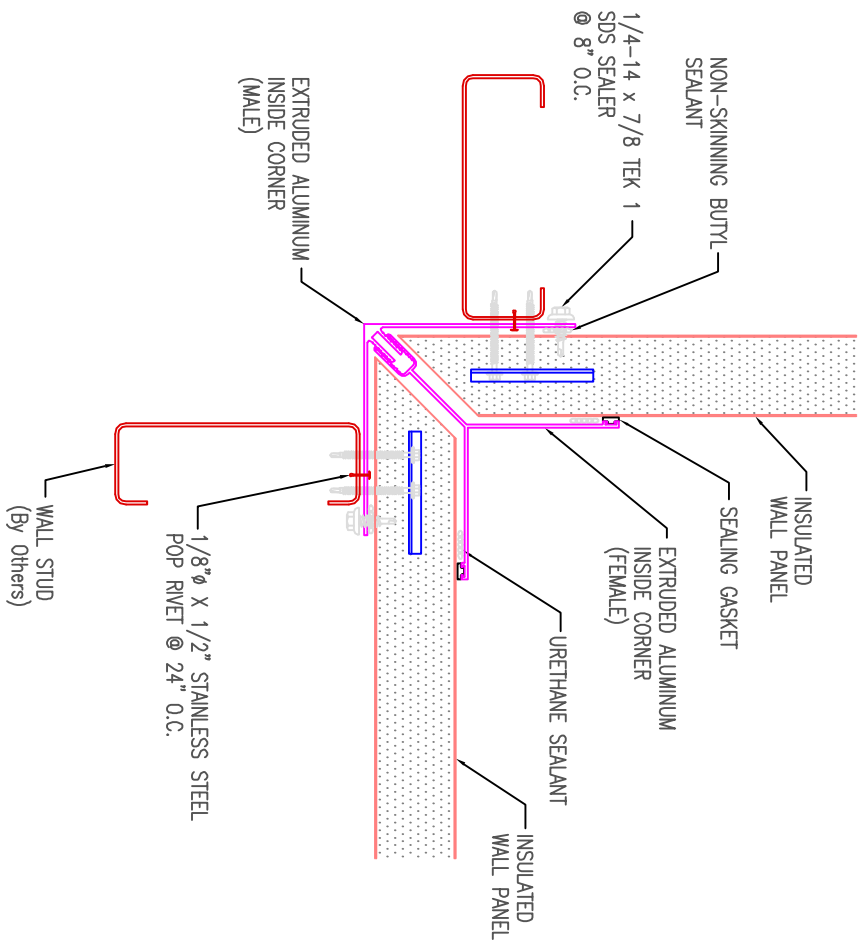
APP DATE

**SH. SIZE**

SCALE

REV. NO.	DATE	DESCRIPTION OF REVISION	BY	APP

**X:X**



NOTE: FIELD CUT STARTING PANEL AND ENDING PANEL AS REQUIRED AT CORNER TRANSITION.

REV. NO.	DATE	DESCRIPTION OF REVISION	BY	APP

**ATLAS**  
**ATAS INTERNATIONAL, INC**  
 Allentown PA  
 610-395-8445  
 Mesa AZ  
 480-558-7210

**TITLE**  
 Horizontal Wall-Aluminum Extrusion-Inside Corne

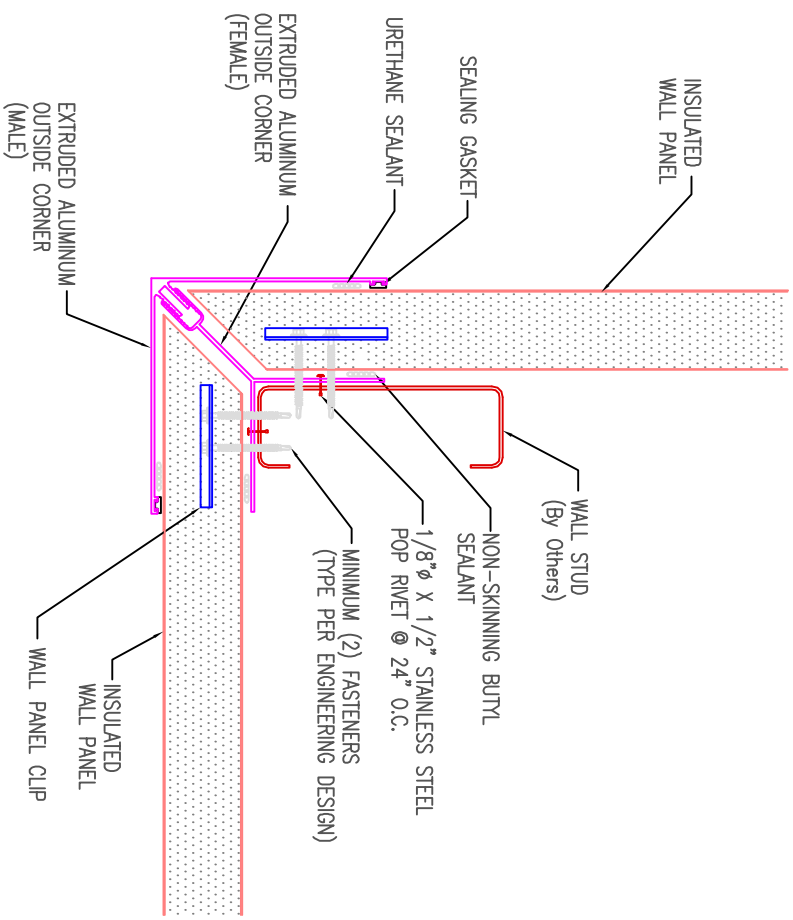
**DWG. NO.**

**DR**      **DATE**

**APP**      **DATE**

**SH. SIZE**      **SCALE**

**X:X**



NOTE: FIELD CUT STARTING PANEL AND ENDING PANEL AS REQUIRED AT CORNER TRANSITION.

REV. NO.	DATE	DESCRIPTION OF REVISION	BY	APP

**ATLAS**  
**ATAS INTERNATIONAL, INC**  
 Allentown PA  
 610-395-8445  
 Mesa AZ  
 480-558-7210

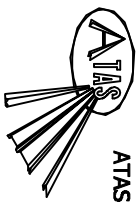
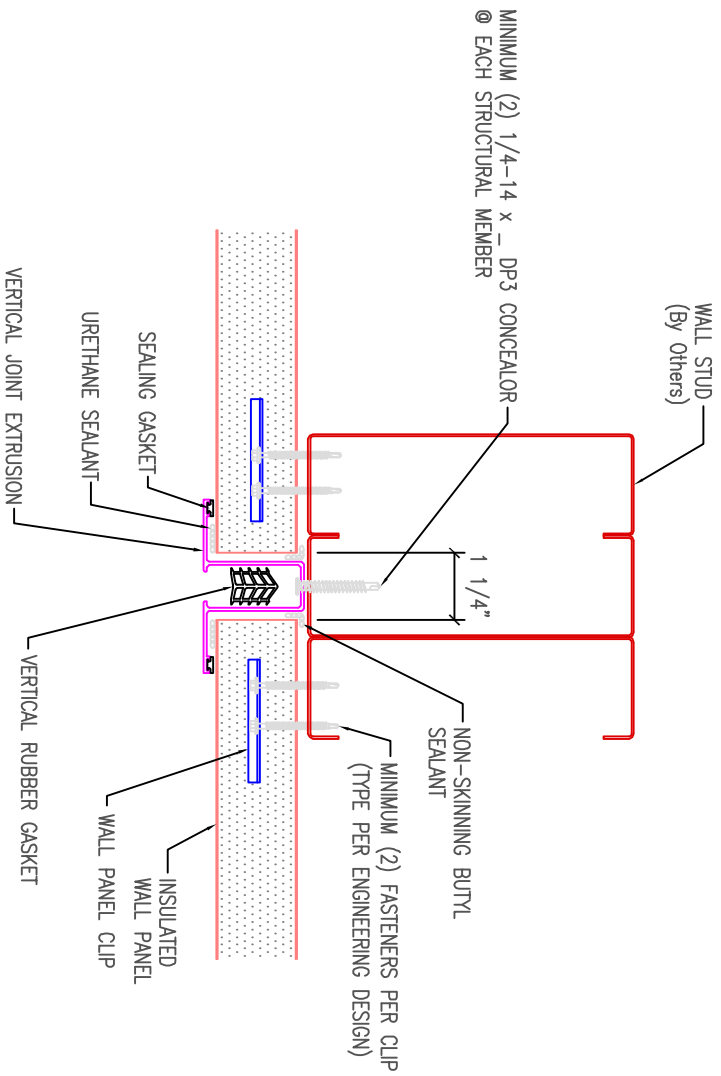
**TITLE**  
 Horizontal Wall-Aluminum Extrusion-Outside Corner

**DWG. NO.**

**DR**      **DATE**  
 APP      DATE

**MATERIAL**

**SH. SIZE**      **SCALE**  
 X:X



**ATAS INTERNATIONAL, INC**

Allentown PA  
610-395-8445  
Mesa AZ  
480-558-7210

**TITLE**

Horizontal Wall-Aluminum Extrusion-Side Joint

**DWG. NO.**

DR DATE

**MATERIAL**

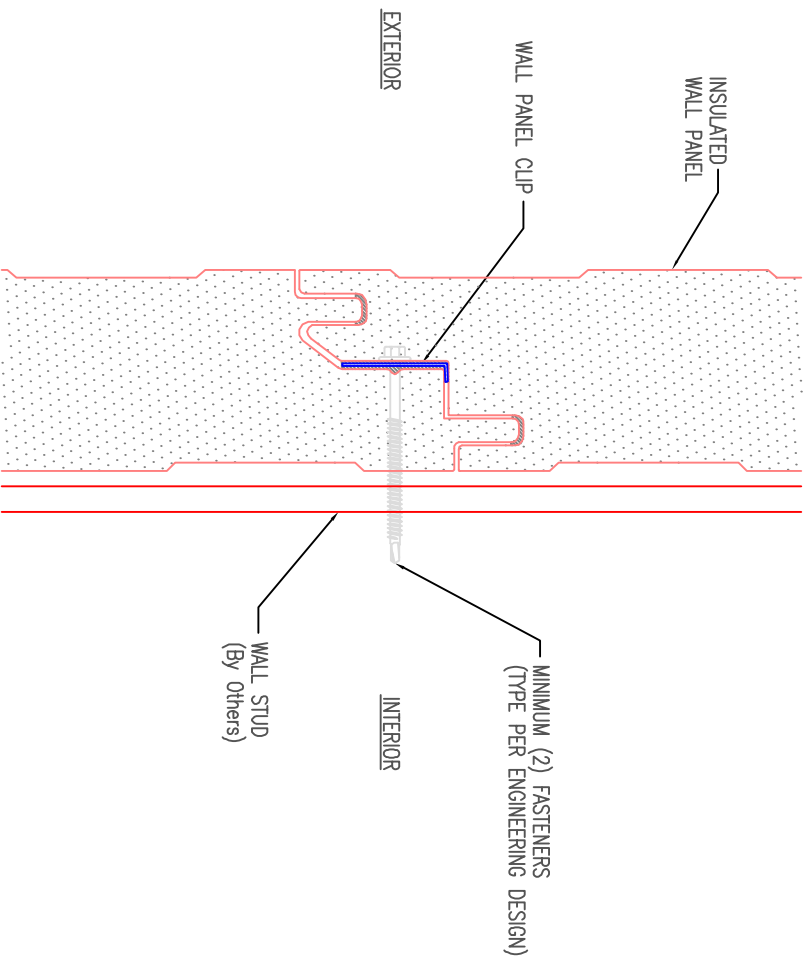
APP DATE

**REV. NO.**

SH. SIZE SCALE

REV. NO.	DATE	DESCRIPTION OF REVISION	BY	APP

**X:X**



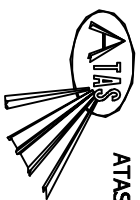
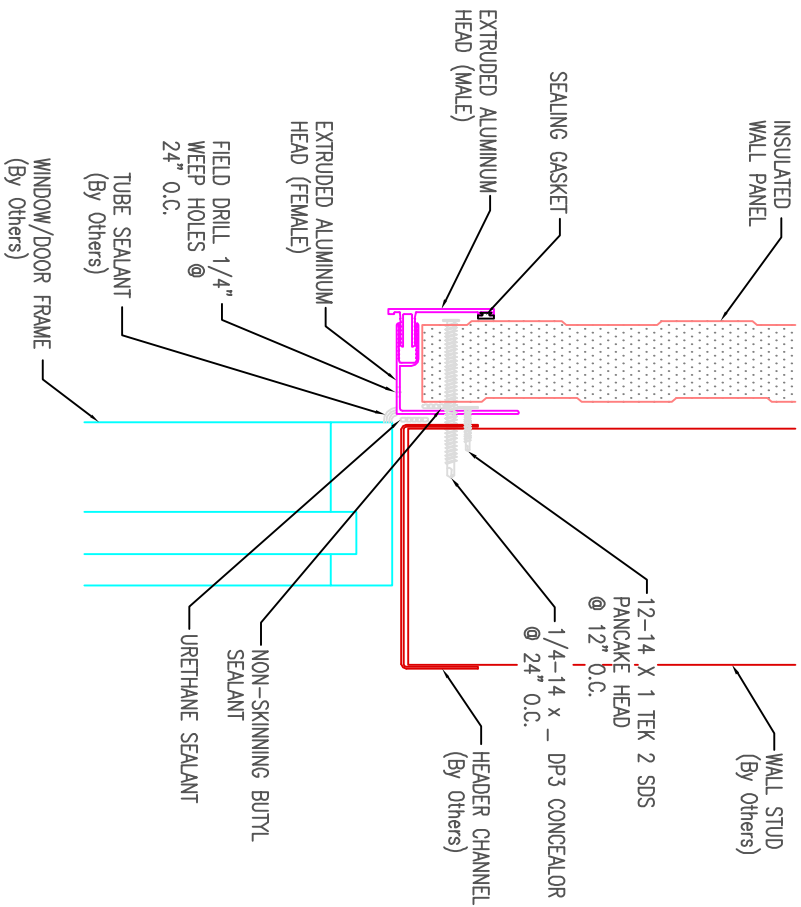
3/8" UNIFORM BEAD OF NON-SKINNING BUTYL SEALANT MUST BE APPLIED IN THE INTERIOR FEMALE GROOVE. APPLYING SEALANT IN THE EXTERIOR FEMALE GROOVE IS OPTIONAL DEPENDING ON VAPOR SEAL REQUIREMENTS

REV. NO.	DATE	DESCRIPTION OF REVISION	BY	APP

**ATAS**  
**ATAS INTERNATIONAL, INC**  
 Allentown PA  
 610-395-8445  
 Mesa AZ  
 480-558-7210

**TITLE**  
 Horizontal Wall- Aluminum Extrusion-Side Lap

DWG. NO.	DR.	DATE
MATERIAL	APP	DATE
SH. SIZE	SCALE	<b>X: X</b>



**ATAS INTERNATIONAL, INC**

Allentown PA  
610-395-8445  
Mesa AZ  
480-558-7210

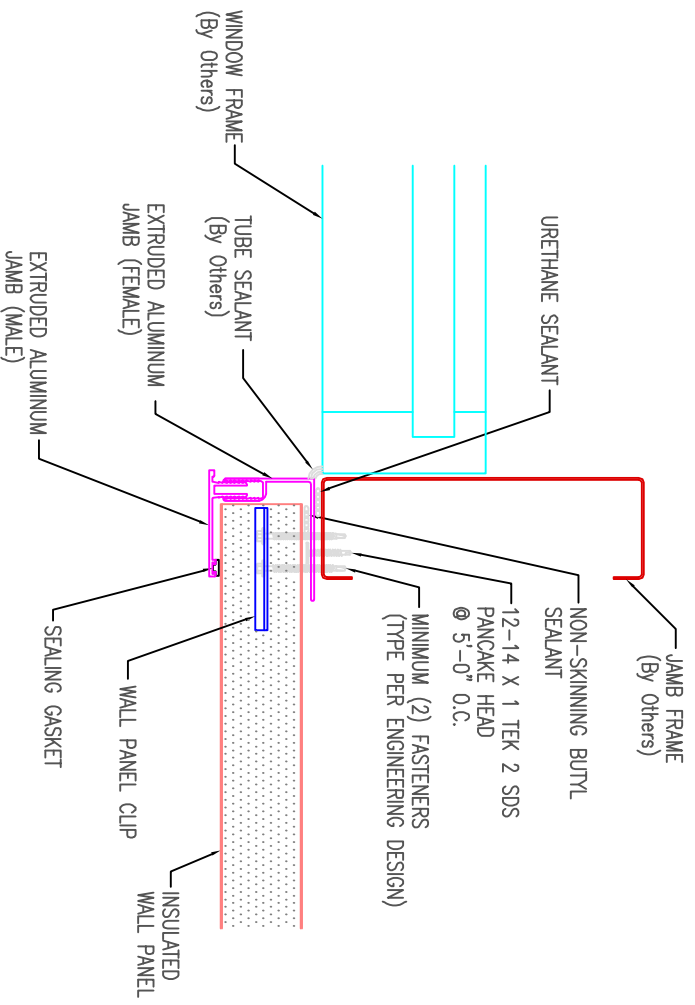
**TITLE**

Horizontal Wall-Aluminum Extrusion-Window Head

REV. NO.	DATE	DESCRIPTION OF REVISION	BY	APP	MATERIAL	SH. SIZE	SCALE

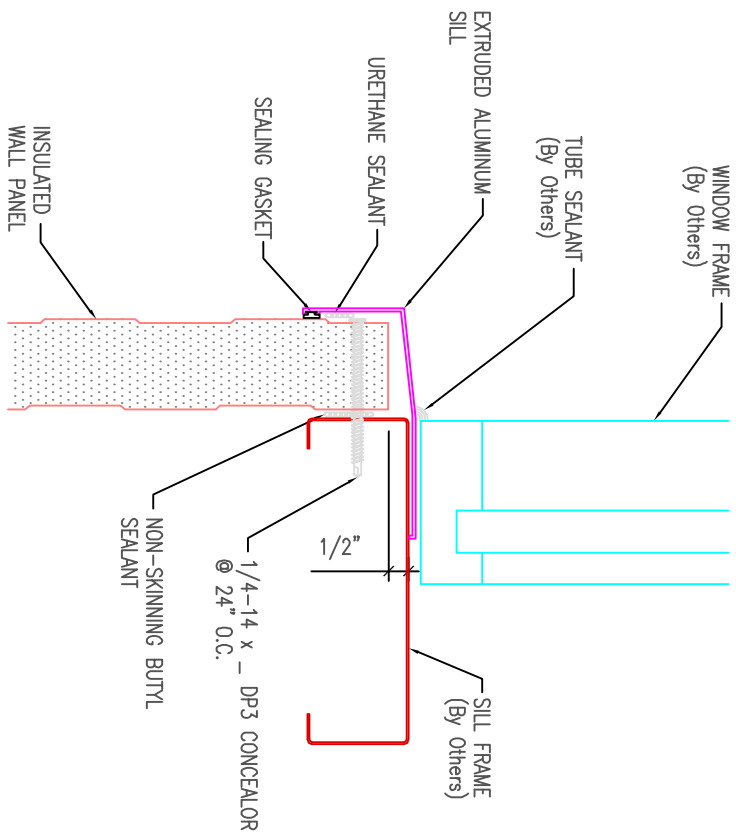
**X:X**






**ATLAS INTERNATIONAL, INC**  
 Allentown PA  
 610-395-8445  
 Mesa AZ  
 480-558-7210

REV. NO.	DATE	DESCRIPTION OF REVISION	BY	APP	TITLE
					Horizontal Wall-Aluminum Extrusion-Window Jamb
					DWG. NO.
					DR
					DATE
					APP
					DATE
					MATERIAL
					SH. SIZE
					SCALE
					<b>X:X</b>



REV. NO.	DATE	DESCRIPTION OF REVISION	BY	APP

**ATLAS**  
**ATAS INTERNATIONAL, INC**  
 Allentown PA  
 610-395-8445  
 Mesa AZ  
 480-558-7210

<b>TITLE</b>		DR	DATE
Horizontal Wall-Aluminum Extrusion-Window Sill		APP	DATE
<b>DWG. NO.</b>		SH. SIZE	SCALE
			X:X
<b>MATERIAL</b>			