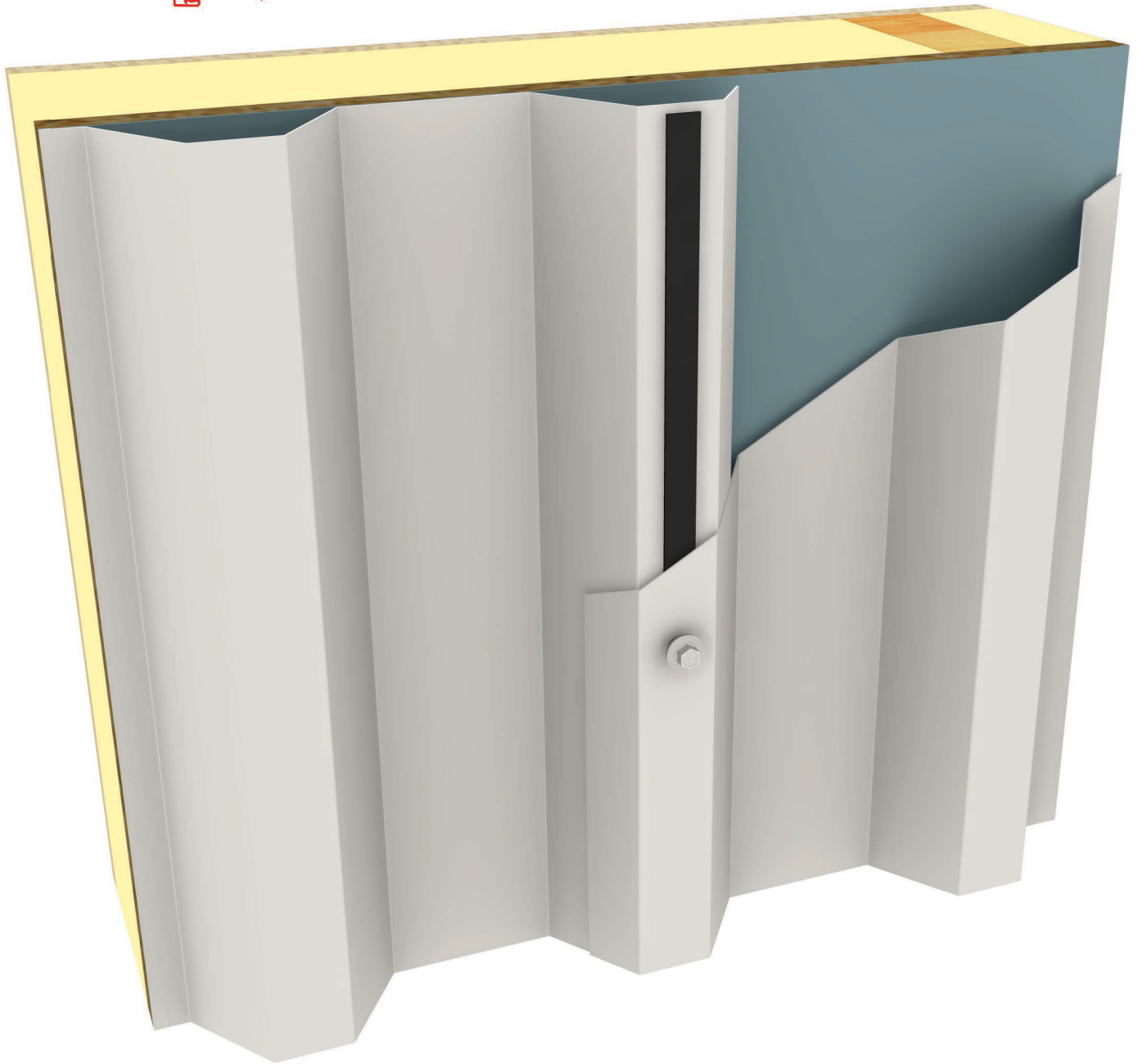




ATAS International, Inc.

Sustainable Building Envelope Technology



Maintaining a Proper Seal

BUTYL SEALANTS

SPACER - A NEW CONCEPT IN BUTYL SEALANTS

The addition of spacer cubes to butyl sealants helps to prevent the sealant from bottoming out during installation.

Butyl sealant tapes and pumpable butyl sealants will migrate out of metal building joints after installation due to the daily thermal expansion and contraction that occurs in all buildings. Adding spacer cubes helps to prevent the sealant from pumping down lower than the cube thickness, helping to maintain a proper seal.



Sealant **with** spacer cubes

Sealant **without** spacer cubes

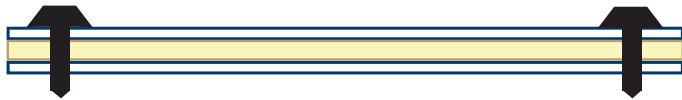
1A. Sealant without spacer cubes



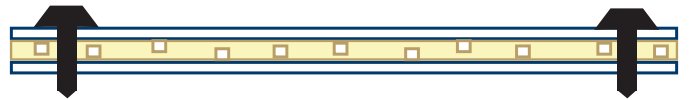
1B. Sealant with spacer cubes



2A. Sealant after fasteners are applied



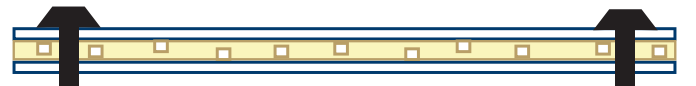
2B. Sealant with spacer cubes after fasteners



3A. Sealant after pumping action from daily thermal expansion/contraction showing sealant pump out and loss of seal in joint



3B. Sealant after pumping action from daily thermal expansion/contraction. No sealant pump out, no loss of seal.



Other types of spacer designs separate from the butyl sealant during thermal expansion and contraction, leaving the spacer at one thickness and continuing thinning of sealant due to the constant movement of the roof. Spacer cubes remain an integral part of the sealant and help to maintain a proper seal at all times.