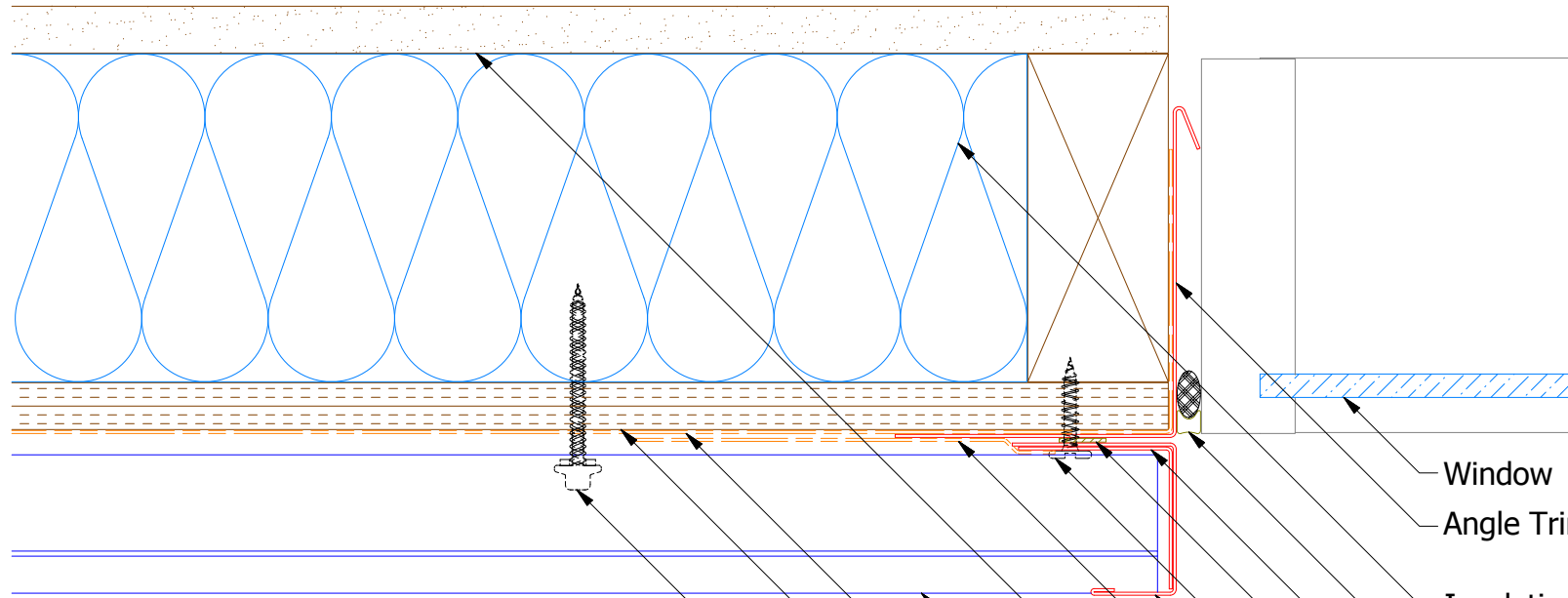
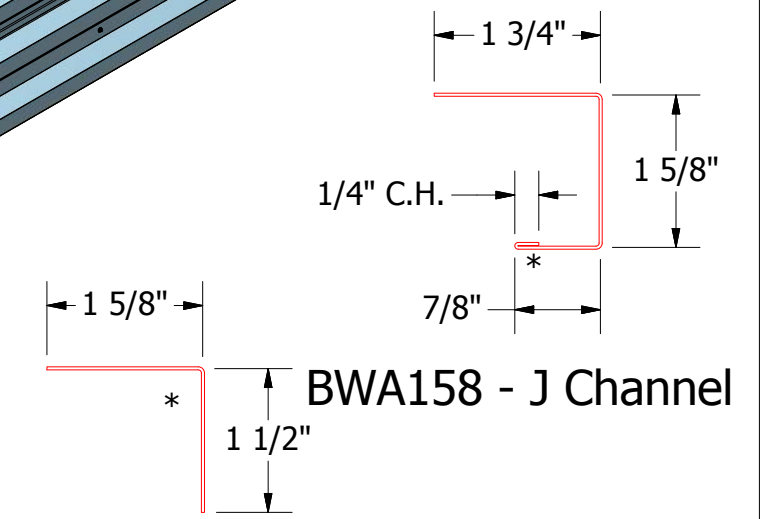
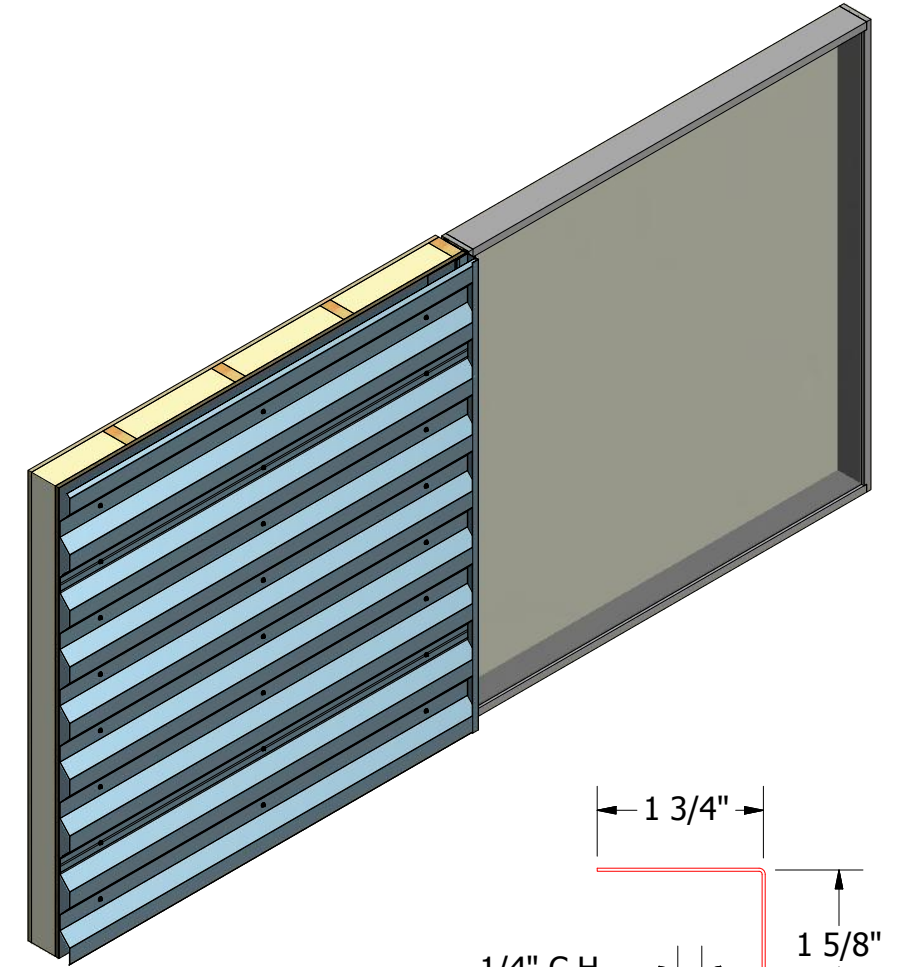


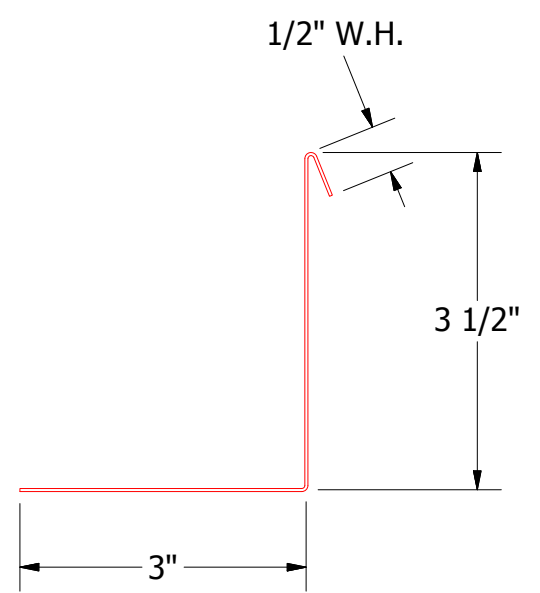
# Horizontal Panel



- Window
- Angle Trim with Return
- Insulation
- Backer Rod and Sealant
- Angle Trim
- Butyl Tape
- #10 x 1" Wafer Head Screw
- J Channel
- Membrane Strip over J Channel and Angle Trim
- Interior Finish
- 7.2" Rib Panel
- Water and Air Resistive Barrier
- 1/2" Plywood (min.)
- #10 x 2" Painted Hex Washer Head Screw with Washer



**BWA680 - Angle Trim**



**BWA683 - Angle Trim with Return**

REV. NO.		DATE	DESCRIPTION OF REVISION	BY	APP	TITLE	
						7.2 inch Rib Jamb Detail	
DWG. NO.		DR	KRK	DATE	2/1/2016	MATERIAL	
		APP	DAS	DATE	7/20/16	SH. SIZE	
						B	X:X

**ATAS** INTERNATIONAL, INC  
 Allentown PA  
 610-395-8445  
 Mesa AZ  
 480-558-7210